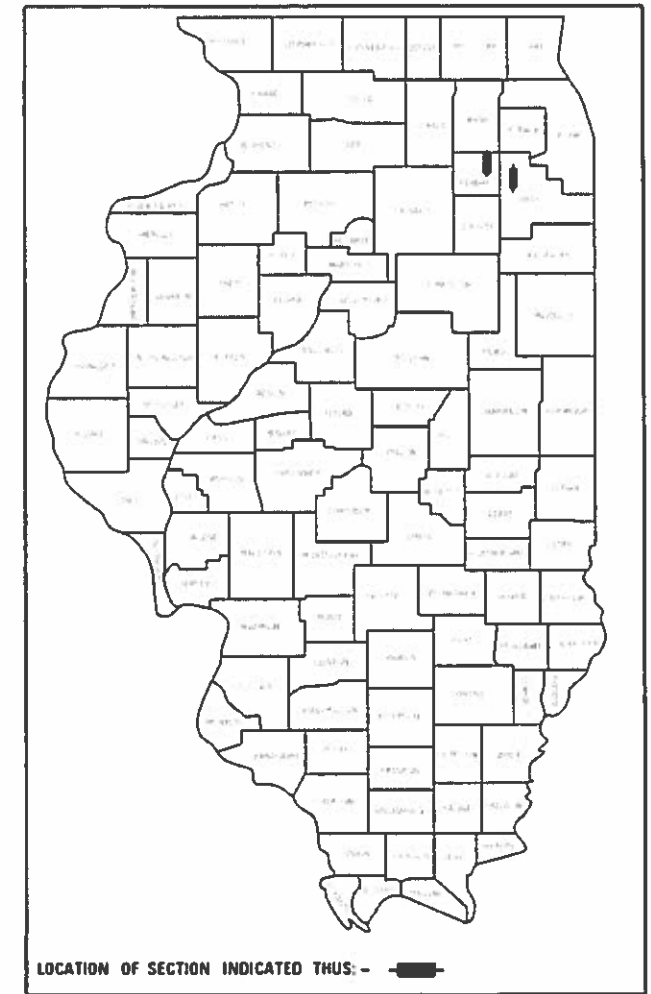


STATE OF ILLINOIS
DEPARTMENT OF TRANSPORTATION

FAP RTE.	SECTION	COUNTY	TOTAL SHEETS	SHEET NO.
	2018-077-BP	ILLINOIS	15	1
CONTRACT NO. 62H13				

15 + 2 = 17 TOTAL SHEETS

D-91-009-19



FOR INDEX OF SHEETS, SEE SHEET NO. 2

TRAFFIC DATA:

US-52

2017 ADT = 29,300
SPEED LIMIT = 40 MPH

IL-31

2017 ADT = 12,400
SPEED LIMIT = 45 MPH

PROPOSED HIGHWAY PLANS

- 1) FAP ROUTE 846: US-52 OVER HICKORY CREEK
- 2) FAP ROUTE 860: IL-31 OVER BNSF RAIL ROAD

SECTION: 2018-077-BP

PROJECT: NHPP-SOSS(355)

BRIDGE PAINTING

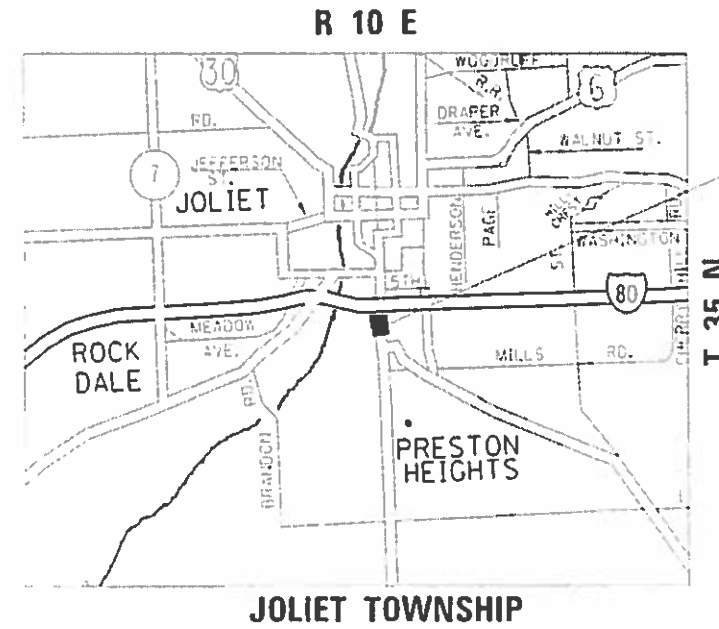
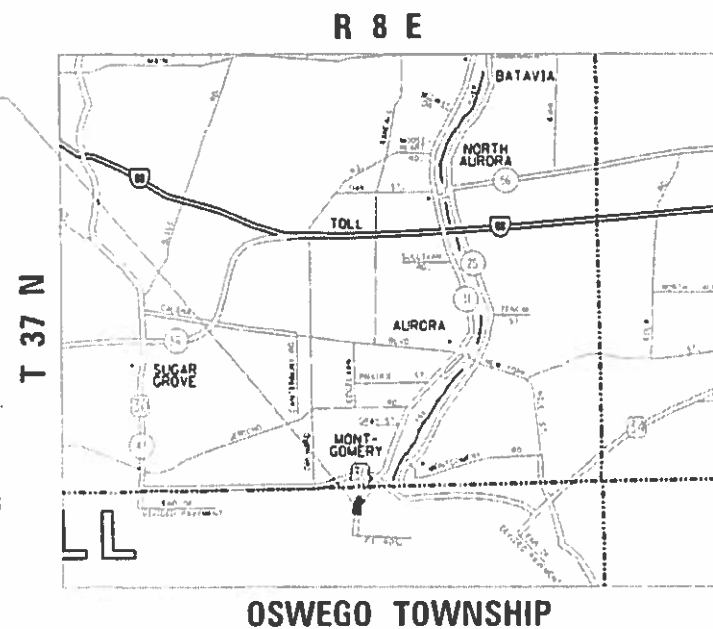
- 1) WILL COUNTY
- 2) KENDALL COUNTY

C-91-206-19

IMPROVEMENT LOCATION 2:
IL-31 OVER BNSF RAIL ROAD
SN: 047-0006
VILLAGE OF OSWEGO

FULL SIZE PLANS HAVE BEEN PREPARED USING STANDARD ENGINEERING SCALES. REDUCED SIZED PLANS WILL NOT CONFORM TO STANDARD SCALES. IN MAKING MEASUREMENTS ON REDUCED PLANS, THE ABOVE SCALES MAY BE USED.

J.U.L.I.E.
JOINT UTILITY LOCATION INFORMATION FOR EXCAVATORS
1-800-892-0123
OR 811



IMPROVEMENT LOCATION 1:
US-52 OVER HICKORY CREEK
SN: 099-0083
CITY OF JOLIET

STATE OF ILLINOIS
DEPARTMENT OF TRANSPORTATION

SUBMITTED January 28, 2019

Richard A. Quigley / RAS
REGIONAL ENGINEER

March 20, 2019
E.A. ETK
ENGINEER OF DESIGN AND ENVIRONMENT

March 20, 2019
Paul P. Chif
DIRECTOR OF HIGHWAYS PROJECT IMPLEMENTATION 3

PROJECT ENGINEER: ALAIN MIDY (847) 221-3056
PROJECT MANAGER: FAWAD AQUEEL (847) 705-4247

CONTRACT NO. 62H13

PRINTED BY THE AUTHORITY
OF THE STATE OF ILLINOIS

INDEX OF SHEETS

1. TITLE SHEET
2. INDEX OF SHEETS, STATE STANDARDS AND GENERAL NOTES
3. SUMMARY OF QUANTITIES
- 4-7. EXISTING BRIDGE PLANS (SN 099-0083)
- 8-12B. EXISTING BRIDGE PLANS (SN 047-0006)
13. TRAFFIC CONTROL AND PROTECTION FOR SIDE ROADS, INTERSECTIONS, AND DRIVEWAYS (TC-10)
14. TRAFFIC CONTROL AND PROTECTION AT TURN BAYS (TO REMAIN) OPEN TO TRAFFIC (TC-14)
15. ARTERIAL ROAD INFORMATION SIGN (TC-22)

STATE STANDARDS

STANDARD NO.	DESCRIPTION
701101-05	OFF-ROAD OPERATIONS, MULTILANE, 15' TO 24" FROM PAVEMENT EDGE
701411-09	LANE CLOSURE, MULTILANE, AT ENTRANCE OR EXIT RAMP FOR SPEEDS > 45MPH
701426-09	LANE CLOSURE, MULTILANE, INTERMITTENT OR MOVING OPERATION, FOR SPEEDS > 45 MPH
701427-05	LANE CLOSURE, MULTILANE, INTERMITTENT OR MOVING OPERATION, FOR SPEEDS < 40 MPH
701601-09	URBAN LANE CLOSURE, MULTILANE, 1W OR 2W WITH NONTRAVERSABLE MEDIAN
701701-10	URBAN LANE CLOSURE, MULTILANE INTERSECTION
701901-08	TRAFFIC CONTROL DEVICES

GENERAL NOTES

BEFORE STARTING ANY EXCAVATION, THE CONTRACTOR SHALL CALL "J.U.L.I.E." AT (800) 892-0123 OR 811 FOR FIELD LOCATIONS OF BURIED ELECTRIC, TELEPHONE AND GAS UTILITIES. 48 HOUR NOTIFICATION IS REQUIRED.

THE CONTRACTOR SHALL COORDINATE CONSTRUCTION ACTIVITIES WITH UTILITY COMPANIES, AND CITY OF JOLIET AND VILLAGE OF OSWEGO.

PLAN DIMENSIONS AND DETAILS RELATIVE TO EXISTING PLANS ARE SUBJECT TO NOMINAL CONSTRUCTION VARIATIONS. THE CONTRACTOR SHALL FIELD VERIFY EXISTING DIMENSIONS AND DETAILS AFFECTING NEW CONSTRUCTION AND MAKE NECESSARY APPROVED ADJUSTMENTS PRIOR TO CONSTRUCTION OR ORDERING OF MATERIALS. SUCH VARIATIONS SHALL NOT BE CAUSE FOR ADDITIONAL COMPENSATION FOR A CHANGE IN SCOPE OF THE WORK, HOWEVER, THE CONTRACTOR WILL BE PAID FOR THE QUANTITY ACTUALLY FURNISHED BASED AT THE UNIT PRICE BID FOR THE WORK.

THE CONTRACTOR WILL NOT BE ALLOWED TO SET UP A YARD OR FIELD OFFICE ON STATE PROPERTY WITHOUT WRITTEN PERMISSION FROM THE DEPARTMENT.

THE CONTRACTOR SHALL CONTACT THE DISTRICT ONE TRAFFIC CONTROL SUPERVISOR AT KALPANA.KANNAN-HOSADURGA@ILLINOIS.GOV FOR ARTERIALS A MINIMUM OF 72 HOURS IN ADVANCE OF BEGINNING WORK.

THE CONTRACTOR SHALL BE REQUIRED TO PROVIDE ACCESS TO ABUTTING PROPERTY AT ALL TIMES DURING THE CONSTRUCTION OF THIS PROJECT.

THE CONTRACTOR SHALL TAKE NECESSARY PRECAUTIONS WHEN WORKING NEAR THE ABUTMENTS DUE TO ELECTRICAL JUNCTIONS BOXES AND ATTACHED CONDUITS.

DO NOT SCALE PLANS FOR CONSTRUCTION DIMENSIONS.

GENERAL PAINT NOTES

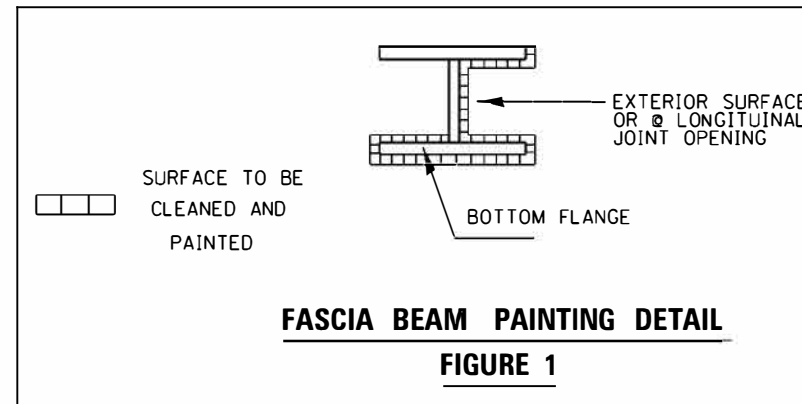
CLEANING AND PAINTING OF THE EXISTING STRUCTURAL STEEL SHALL BE AS SPECIFIED IN THE SPECIAL PROVISION FOR "CLEANING AND PAINTING EXISTING STEEL STRUCTURES".

ALL ITEMS (SUCH AS, BUT NOT LIMITED TO: CONDUITS, BRACKETS AND DECK DRAINS) ATTACHED TO OUTSIDE OF THE FASCIA BEAMS SHOULD BE CLEANED AND PAINTED.

SN 099-0083: ALL BEAMS, BEARINGS AND OTHER STRUCTURAL STEEL WITHIN FIVE (5) FT. (MEASURED ALONG THE BEAM) OF EITHER SIDE OF ALL DECK JOINTS, SHALL BE CLEANED PER NEAR WHITE BLAST CLEANING SSPC-SP10. THE EXTERIOR SURFACES, ALONG LONGITUDINAL JOINT OPENING AND TOP AND BOTTOM OF THE BOTTOM FLANGE OF THE FASCIA BEAMS OR BEAM (SEE FIGURE 1) SHALL BE CLEANED PER NEAR WHITE BLAST CLEANING SSPC-SP10.

SN 047-0006: ALL BEAMS, BEARINGS AND OTHER STRUCTURAL STEEL WITHIN FIVE (5) FT. (MEASURED ALONG THE BEAM) OF EITHER SIDE OF ALL DECK JOINTS, SHALL BE CLEANED PER NEAR WHITE BLAST CLEANING SSPC-SP10.

THESE AREAS SHALL BE PAINTED ACCORDING TO THE REQUIREMENTS OF PAINT SYSTEM 1 -OZ/E/U. THE COLOR OF THE FINAL FINISH COAT FOR ALL INTERIOR STEEL SURFACES SHALL BE GRAY, MUNSELL NO 5B 7/1. THE COLOR OF THE FINAL FINISH COAT FOR THE EXTERIOR AND BOTTOM FLANGE OF THE FASCIA BEAMS SHALL BE REDDISH BROWN, MUNSELL NO 2. 5YR 3/4.



MODEL: Definit FILE NAME: I:\PROJECTS\2018\2018-77-BP\DOT\Drawings\150001-150002\150002.dwg PLOT DATE: 2/11/2019 10:08:19 AM USER: jgennick.dgp

USER NAME = hassani	DESIGNED -	REVISED -
	DRAWN -	REVISED -
PLOT SCALE = 100.0000' / in.	CHECKED -	REVISED -
PLOT DATE = 2/11/2019	DATE -	REVISED -

**STATE OF ILLINOIS
DEPARTMENT OF TRANSPORTATION**

**INDEX OF SHEETS, STATE STANDARDS
GENERAL NOTES AND GENERAL PAINT NOTES**

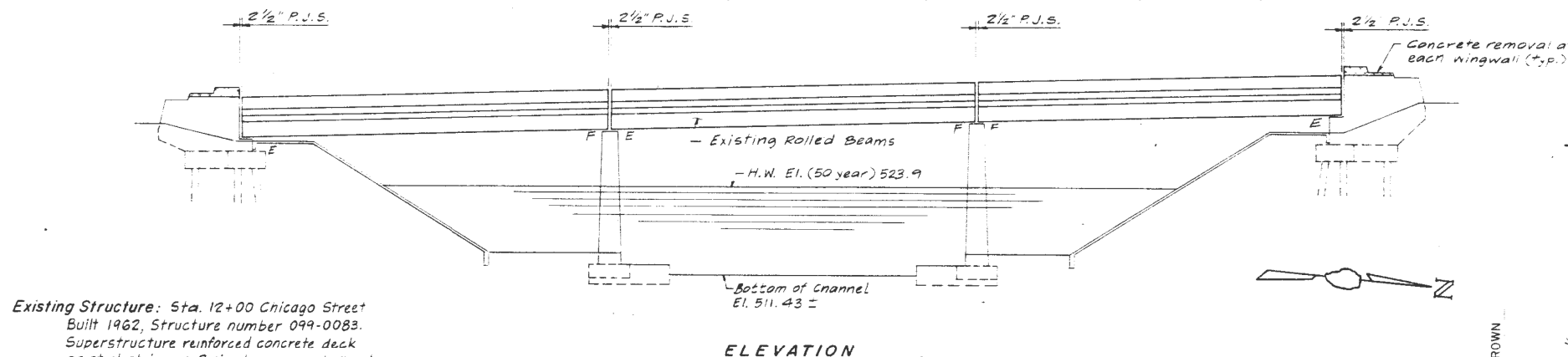
SCALE: SHEET 0F SHEETS STA. T0 STA.

F.A.P. RTE.	SECTION	COUNTY	TOTAL SHEETS	SHEET NO.
890 880	2018-77-BP	KENDALL & WILL	15	2
CONTRACT NO. 62H13			ILLINOIS FED. AID PROJECT	

REV. 3/15/19

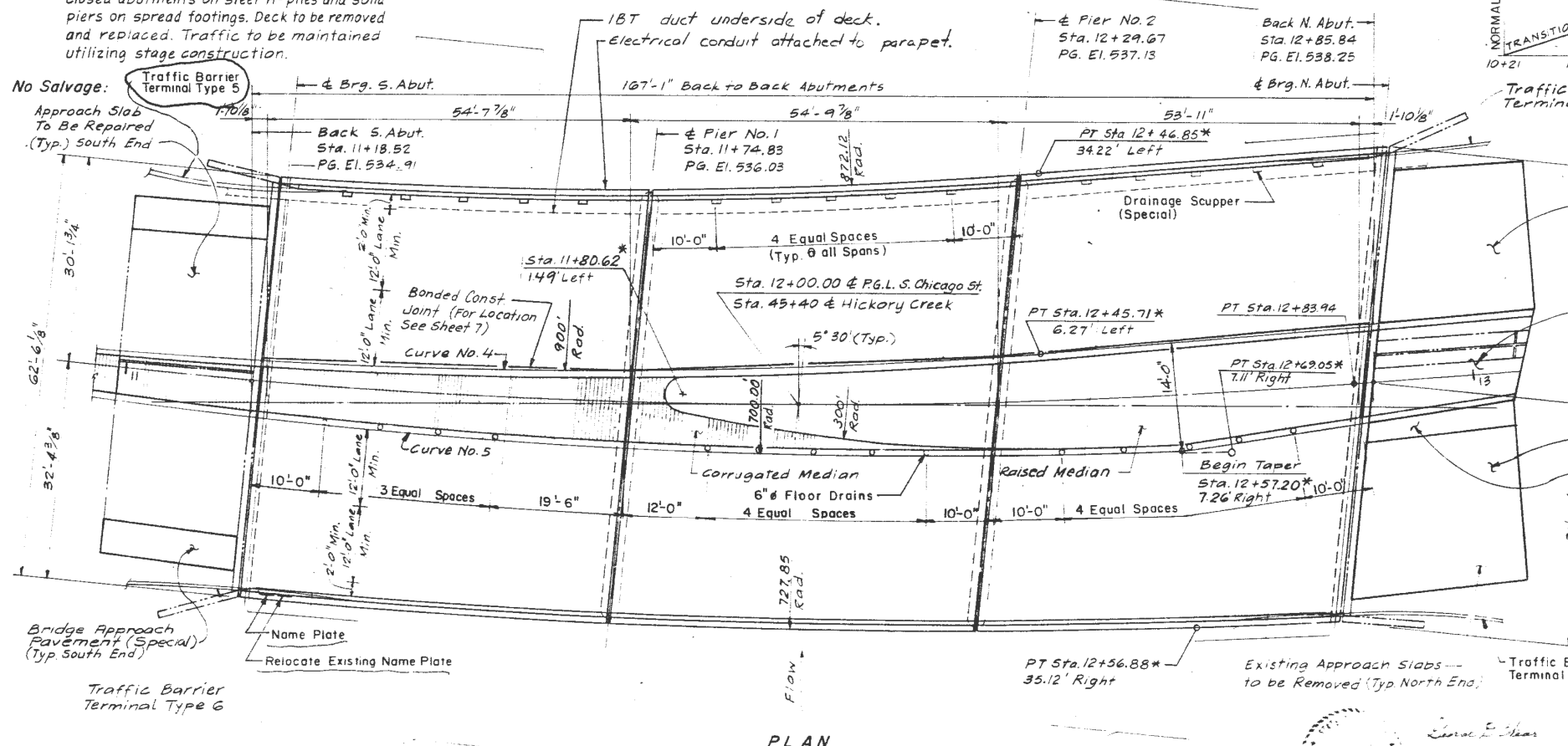
B.M. - Army Corp. of Engr. Std. Disk S.W. Wingwall
Elev. 536.35

FOR INFORMATION ONLY

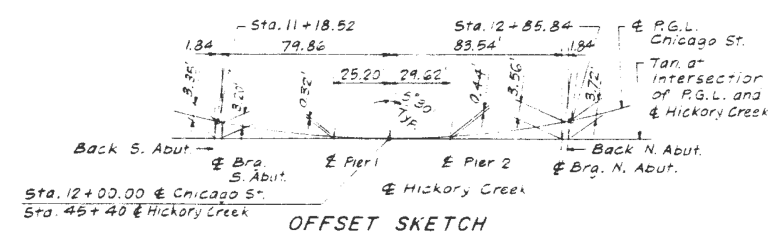


Existing Structure: Sta. 12+00 Chicago Street
Built 1962, Structure number 099-0083.
Superstructure reinforced concrete deck
on steel stringers, 3 simple spans, substructure
closed abutments on steel H-piles and solid
piers on spread footings. Deck to be removed
and replaced. Traffic to be maintained
utilizing stage construction.

ELEVATION



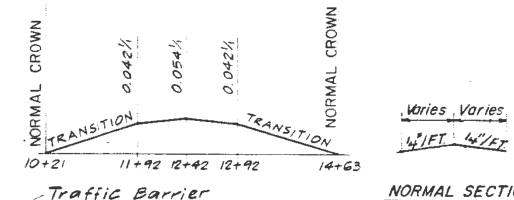
PLAN



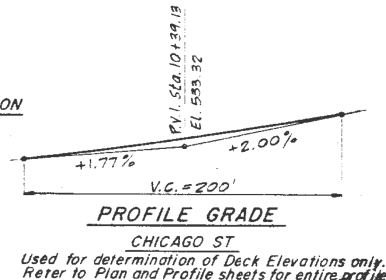
OFFSET SKETCH

HORIZONTAL CURVE DATA

PROPOSED S.B. MEDIAN EDGE	EXISTING	PROPOSED N.B. MEDIAN EDGE
CURVE NO. 4		CURVE NO. 5
PI STA. = 11+23.32 *	PI STA. = 11+49.87	PI STA. = 11+74.57 *
6.03' RIGHT		13.09' RIGHT
$\Delta = 15^\circ 33' 10''$	$\Delta = 15^\circ 33' 10''$	$\Delta = 15^\circ 33' 10''$
$D = 62' 11' 58''$	$D = 5^\circ 45' 51''$	$D = 8^\circ 11' 06''$
$R = 900.00'$	$R = 994'$	$R = 700.00'$
$T = 122.91'$	$T = 135.74'$	$T = 95.59'$
$L = 244.30'$	$L = 269.82'$	$L = 190.01'$
$E = 8.35'$	$E = 9.23'$	$E = 6.50'$



EXISTING & PROPOSED SUPERELEVATION RATES



PROFILE GRADE

CHICAGO ST
Used for determination of Deck Elevations only.
Refer to Plan and Profile sheets for entire profile.

Note: I.B.T. And Electrical Conduit to be Relocated, See Roadway Plans.

APPROVED FOR STRUCTURAL ADEQUACY ONLY

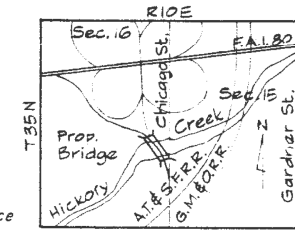
SEP 11 2018
Licensed Structural Engineer

DESIGN SPECIFICATIONS
1989 AASHTO, 1990 Interim

LOADING HS 20-44
Allow 25^{sq} ft. for future wearing surface

DESIGN STRESSES

$f_c = 3,500$ psi	New Construction
$f_y = 60,000$ psi (Reinf.)	
$f_s = 20,000$ psi (Struct.)	
	Existing



LOCATION PLAN

* Note: Stations Shown Are Based On Stationing Along S. Chicago Street

STATE OF ILLINOIS
DEPARTMENT OF TRANSPORTATION

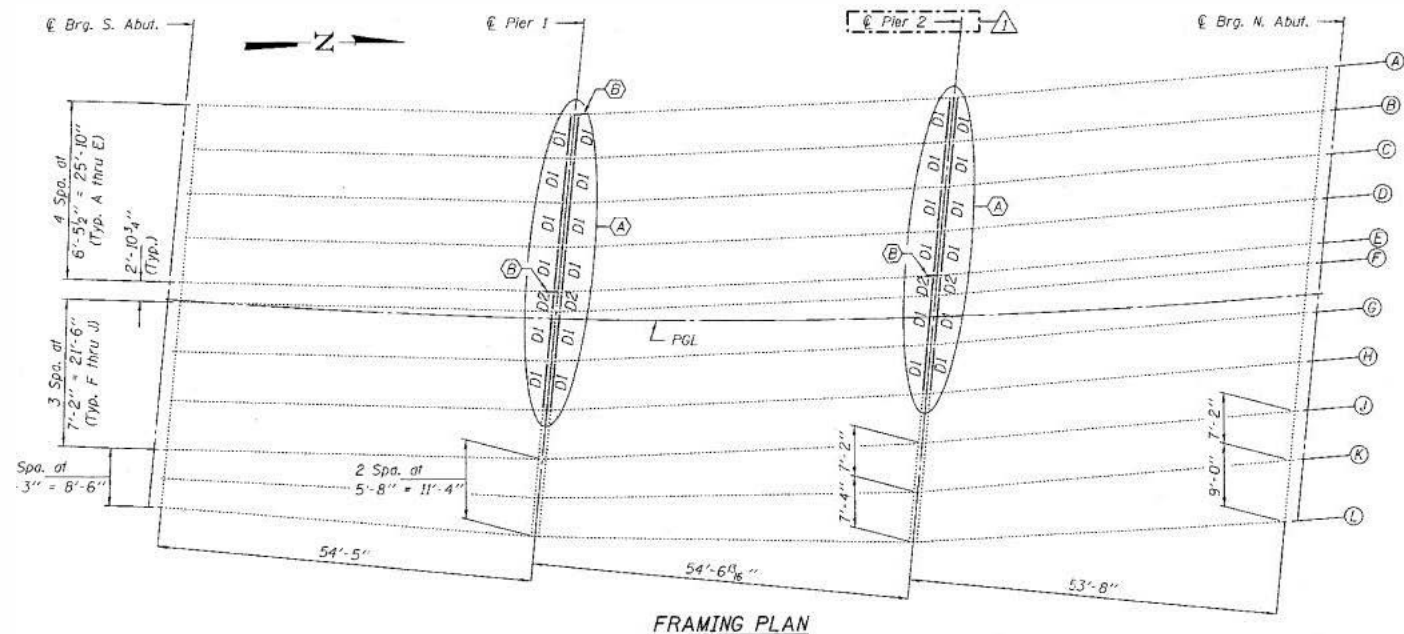
LOCATION 1: EXISTING BRIDGE PLAN
US-52 OVER HICKORY CREEK (SN: 099-0083)

USER NAME = hassan	DESIGNED -	REVISED -
	DRAWN -	REVISED -
PLOT SCALE = 100,0000' / in.	CHECKED -	REVISED -
PLOT DATE = 2/1/2019	DATE -	REVISED -

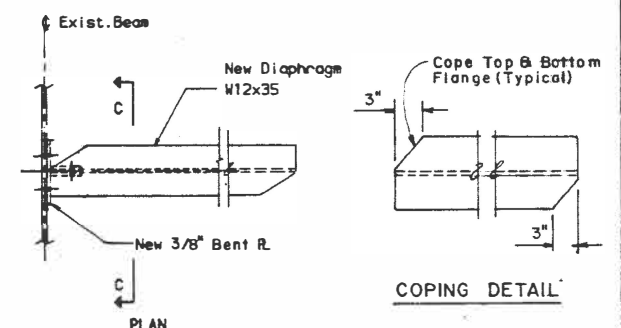
SCALE: SHEET OF SHEETS STA. TO STA.

F.A.P. RTE. 846 860	SECTION 2018-77-BP	COUNTY WILL KENDALL	TOTAL SHEETS 15	SHEET NO. 4
ILLINOIS FED. AID PROJECT			CONTRACT NO. 62H13	

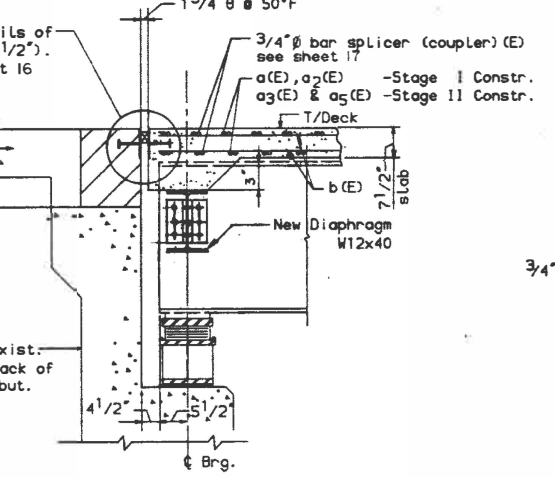
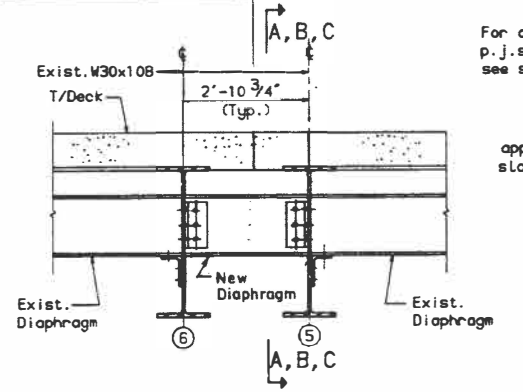
MODEL: Default FILE: \\nas01\p01\B&E\BID\ITC\Illinois\gov\p01\B&E\BID\ITC\Office\BID\I1\proj\001\0099\0083\Design\01\09919-shr-pln-bm.dgn



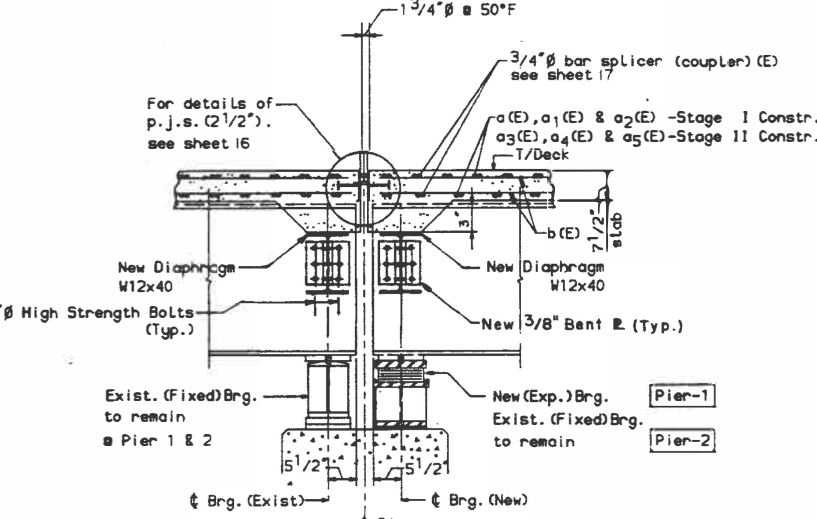
Notes:
 ALL dimensions to be verified in field.
 ALL contact surfaces of joints for the new diaphragms shall be free of paint or lacquer.
 Hardened washers shall be required over all 15/16" ϕ holes.
 No flame cutting of the beam web will be allowed. Only drilling will be allowed for bolt holes.



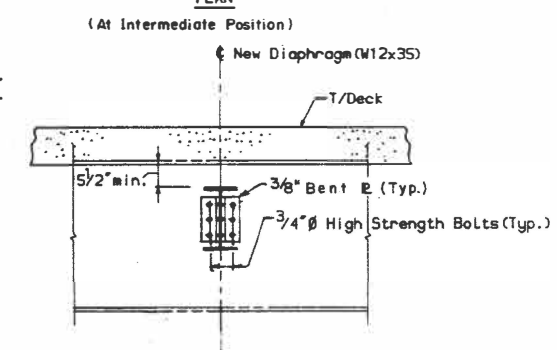
Stage II Reconstruction Stage I Reconstruction



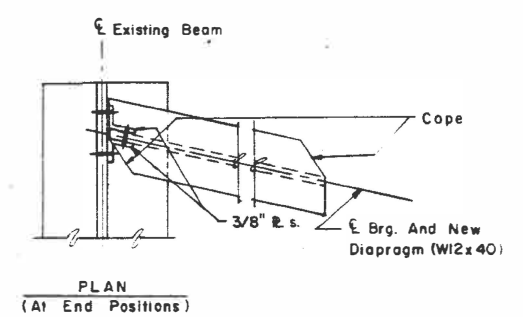
SECTION A-A
(At Abutments)



SECTION B-B
(At Pier-1)
(Pier-2 similar U.N.O.)



SECTION C-C
(At Intermediate positions)



PLAN
(At End Positions)

FOR INFORMATION ONLY

MODEL: Default
 FILE NAME: P:\1104848\BID\NTEC\Illinois.gov\FW\DOT\Documents\DOT Office\BID\District 3\Projects\1009319\CAD\Drawings\Design\1009319-akt-plan.dgn

USER NAME = hassann	DESIGNED -	REVISED -
	DRAWN -	REVISED -
PLOT SCALE = 100.0000' / in.	CHECKED -	REVISED -
PLOT DATE = 2/1/2019	DATE -	REVISED -

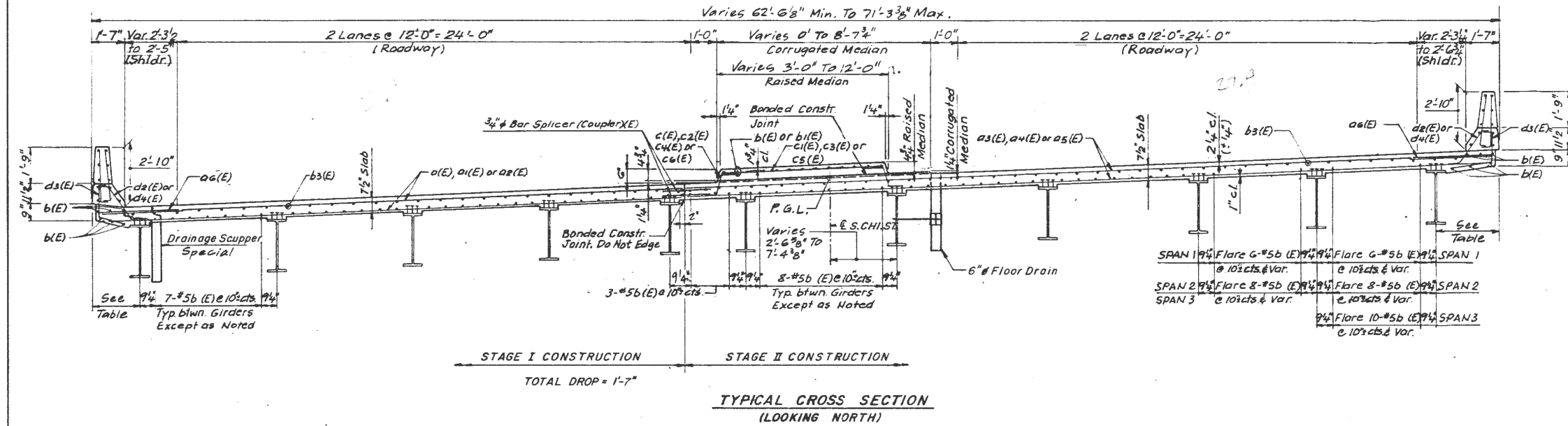
STATE OF ILLINOIS
 DEPARTMENT OF TRANSPORTATION

LOCATION 1: EXISTING BRIDGE FRAMING PLAN
 US-52 OVER HICKORY CREEK (SN: 099-0083)

SCALE: SHEET OF SHEETS STA. TO STA.

F.A.P. RTE. 846 860	SECTION 2018-77-BP	COUNTY WILL KENDALL	TOTAL SHEETS 15	SHEET NO. 5
ILLINOIS FED. AID PROJECT			CONTRACT NO. 62H13	

FOR INFORMATION ONLY



MODEL: Default
 FILE: \\hpc\p\ul\B&E\BID\ITEC\Illinois.gov\PW\DOT\Documents\BID\DOT Office\BID\I1099\19\CADD\B&E\BID\DOT Office\BID\I1099\19-ehp-plan.dgn

USER NAME = hassan	DESIGNED -	REVISED -
	DRAWN -	REVISED -
PLOT SCALE = 100.0000' / in.	CHECKED -	REVISED -
PLOT DATE = 2/1/2019	DATE -	REVISED -

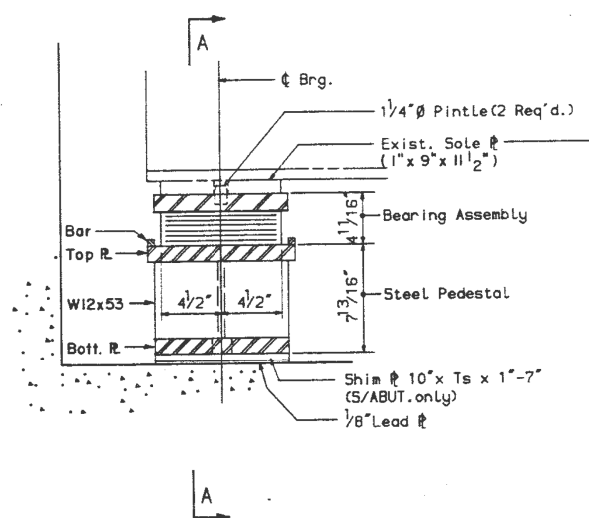
**STATE OF ILLINOIS
DEPARTMENT OF TRANSPORTATION**

**LOCATION 1: EXISTING BRIDGE CROSS SECTION AND DETAILS
US-52 OVER HICKORY CREEK (SN: 099-0083)**

SCALE: SHEET OF SHEETS STA. TO STA.

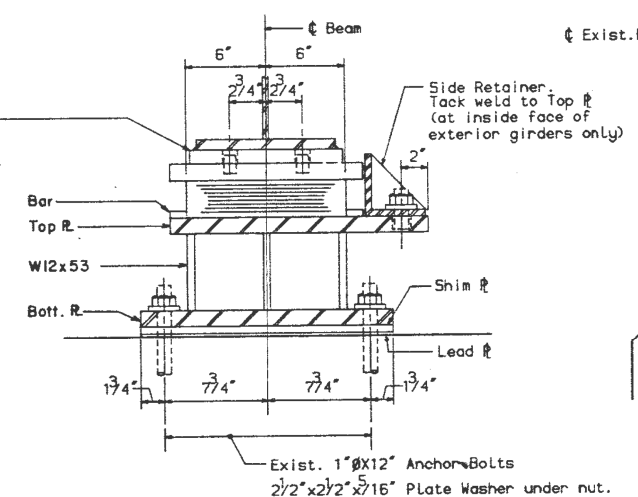
F.A.P. RTE. 846 860	SECTION 2018-77-BP	COUNTY WILL KENDALL	TOTAL SHEETS 15	SHEET NO. 6
CONTRACT NO. 62H13			ILLINOIS FED. AID PROJECT	

FOR INFORMATION ONLY

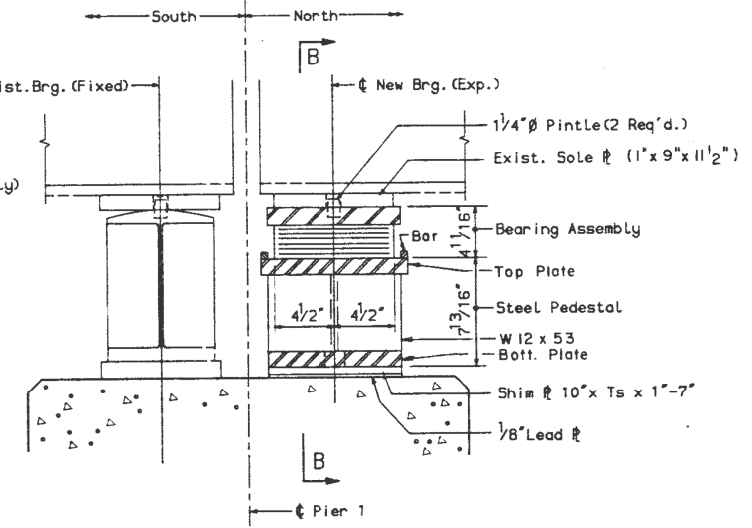


ELEVATION AT ABUTS.

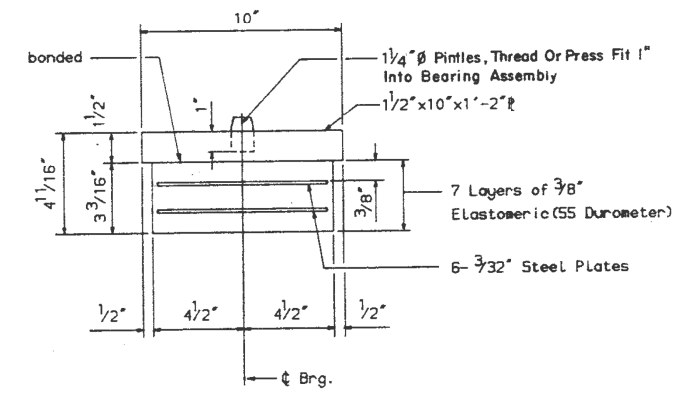
TYPE I ELASTOMERIC EXP. BRG.



SECTION A-A
(SECTION B-B SIMILAR)

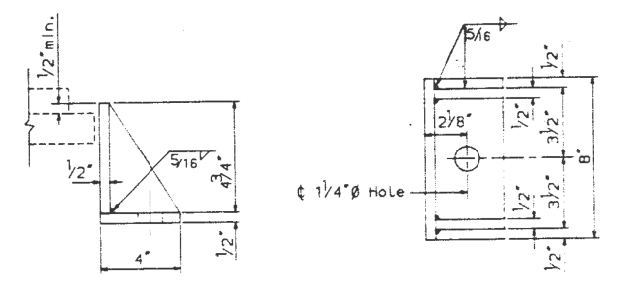


ELEVATION AT PIER 1
TYPE I ELASTOMERIC EXP. BRG.



BEARING ASSEMBLY

Note: Shim plates shall not be placed under Bearing Assembly.



SIDE RETAINER

Equivalent rolled angle with stiffeners will be allowed in lieu of welded plates

MODEL: Default
FILE NAME: p:\ILLINOIS\BID\BID\ITC\Illinois\gov\PIWDOT\Documents\BID\Office\BID\I1099\19\CADD\BID\Design\109919-shr-pln.dgn

USER NAME = hassan	DESIGNED -	REVISED -
	DRAWN -	REVISED -
PLOT SCALE = 100,0000' / in.	CHECKED -	REVISED -
PLOT DATE = 2/1/2019	DATE -	REVISED -

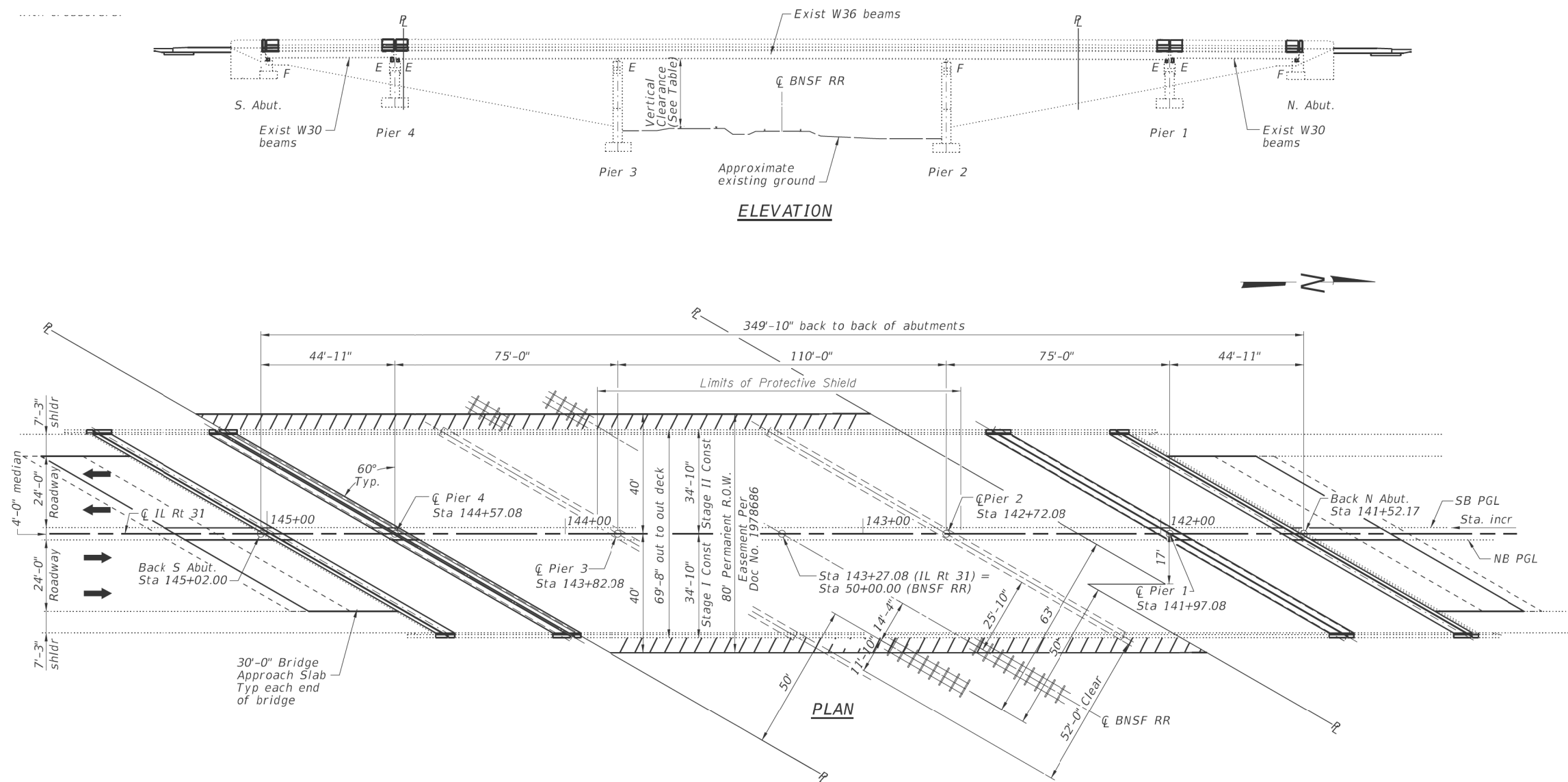
STATE OF ILLINOIS
DEPARTMENT OF TRANSPORTATION

LOCATION 1: EXISTING BRIDGE BEARING DETAILS
US-52 OVER HICKORY CREEK (SN: 099-0083)

SCALE: SHEET OF SHEETS STA. TO STA.

F.A.P. RTE. 846 860	SECTION 2018-77-BP	COUNTY WILL KENDALL	TOTAL SHEETS 15	SHEET NO. 7
CONTRACT NO. 62H13				
ILLINOIS FED. AID PROJECT				

FOR INFORMATION ONLY



MODEL: Default
 FILE: Model - 30x110x184EINDNTEG Illinois.gov.PWDOT\Documents\DOT - Offices\District 1\Projects\100919\CADD\100919.dwg: plan.dgn

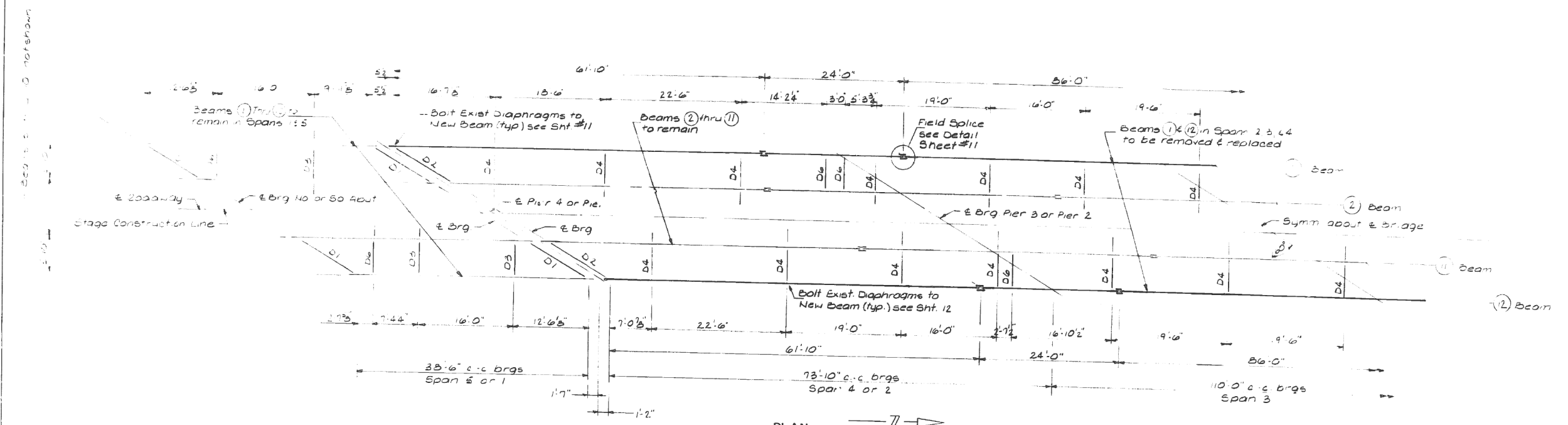
USER NAME = hassam	DESIGNED -	REVISED -
	DRAWN -	REVISED -
PLOT SCALE = 100.0000' / in.	CHECKED -	REVISED -
PLOT DATE = 2/7/2019	DATE -	REVISED -

STATE OF ILLINOIS
DEPARTMENT OF TRANSPORTATION

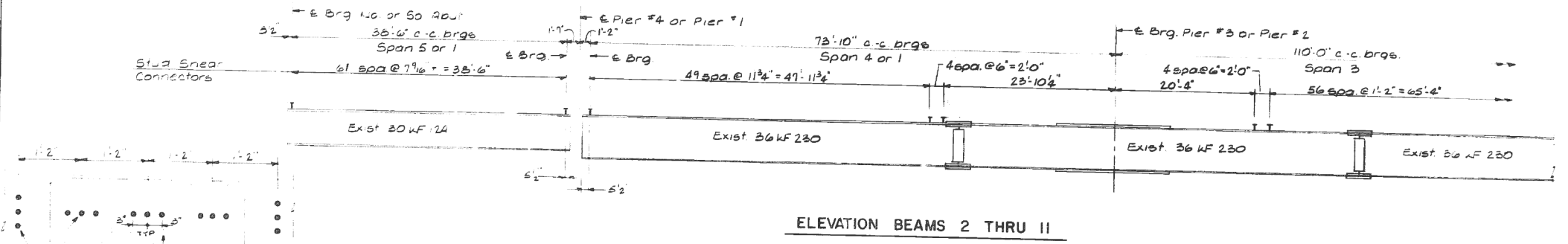
LOCATION 2: EXISTING BRIDGE PLAN
IL-31 OVER BNSF RR (SN: 047-0006)

SCALE: SHEET OF SHEETS STA. TO STA.

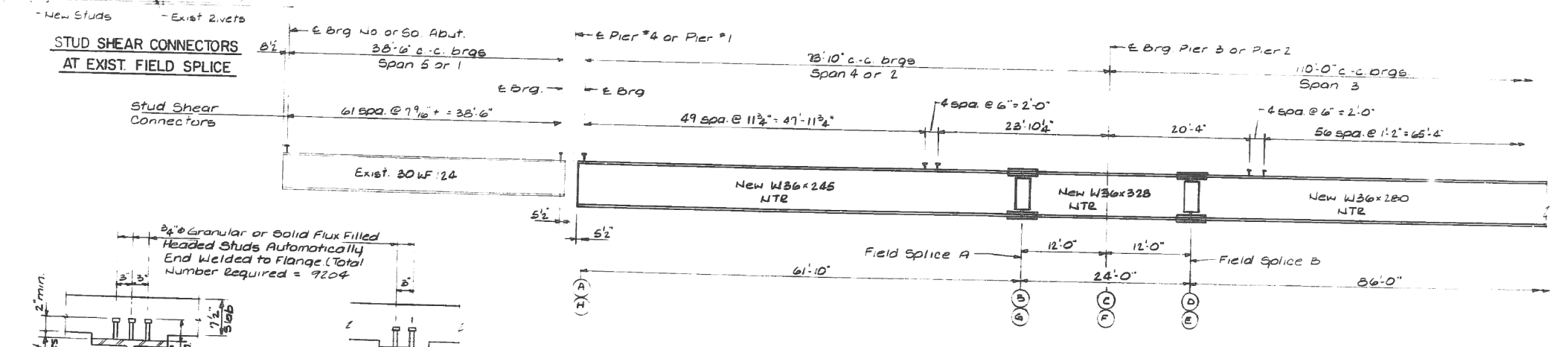
F.A.P. RTE.	SECTION	COUNTY	TOTAL SHEETS	SHEET NO.
846 860	2018-77-BP	WILL KENDALL	15	8
CONTRACT NO. 62H13				
ILLINOIS FED. AID PROJECT				



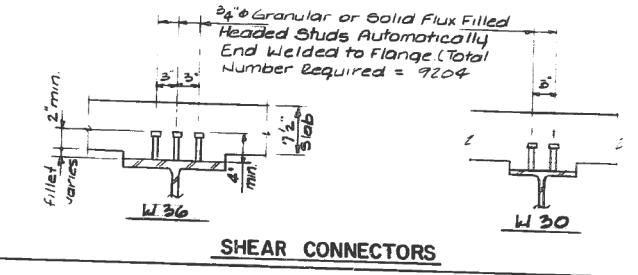
PLAN



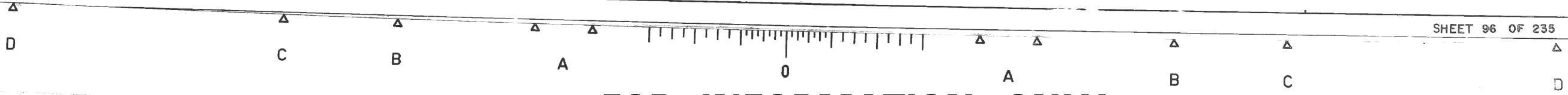
ELEVATION BEAMS 2 THRU 11



ELEVATION BEAMS 1 AND 12



SHEAR CONNECTORS



SHEET 96 OF 235

FOR INFORMATION ONLY

MODEL: Default
 FILE: \\miller\share\BENTITEG\Illinois.gov\PROJECTS\100919\CADD\100919\100919.dwg
 PROJECT: 100919\CADD\100919.dwg
 OFFICE: BENTITEG

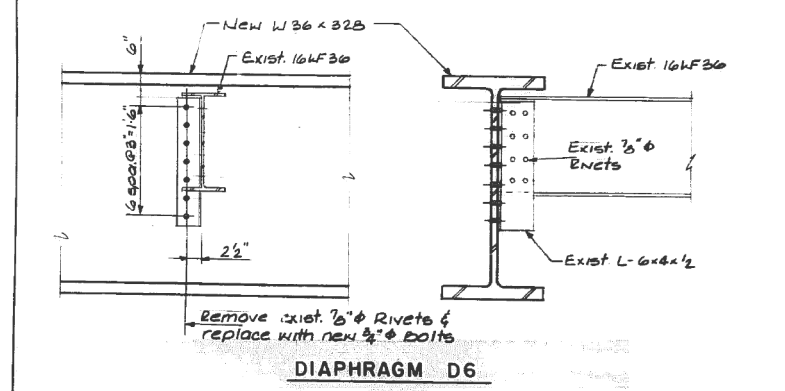
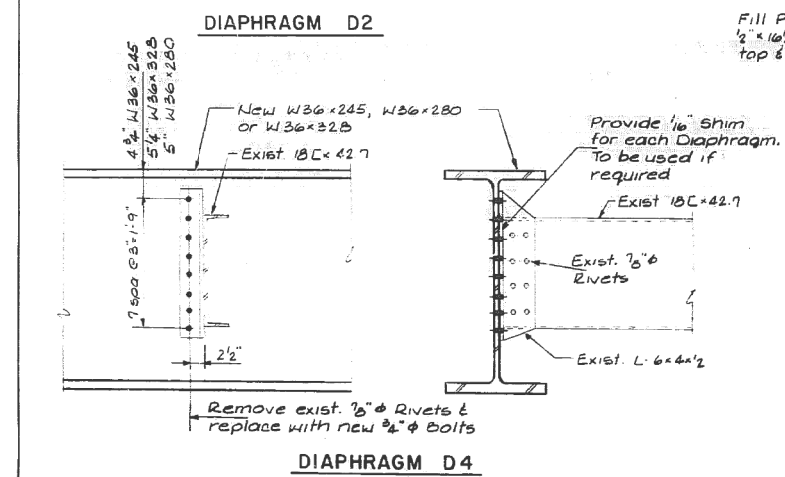
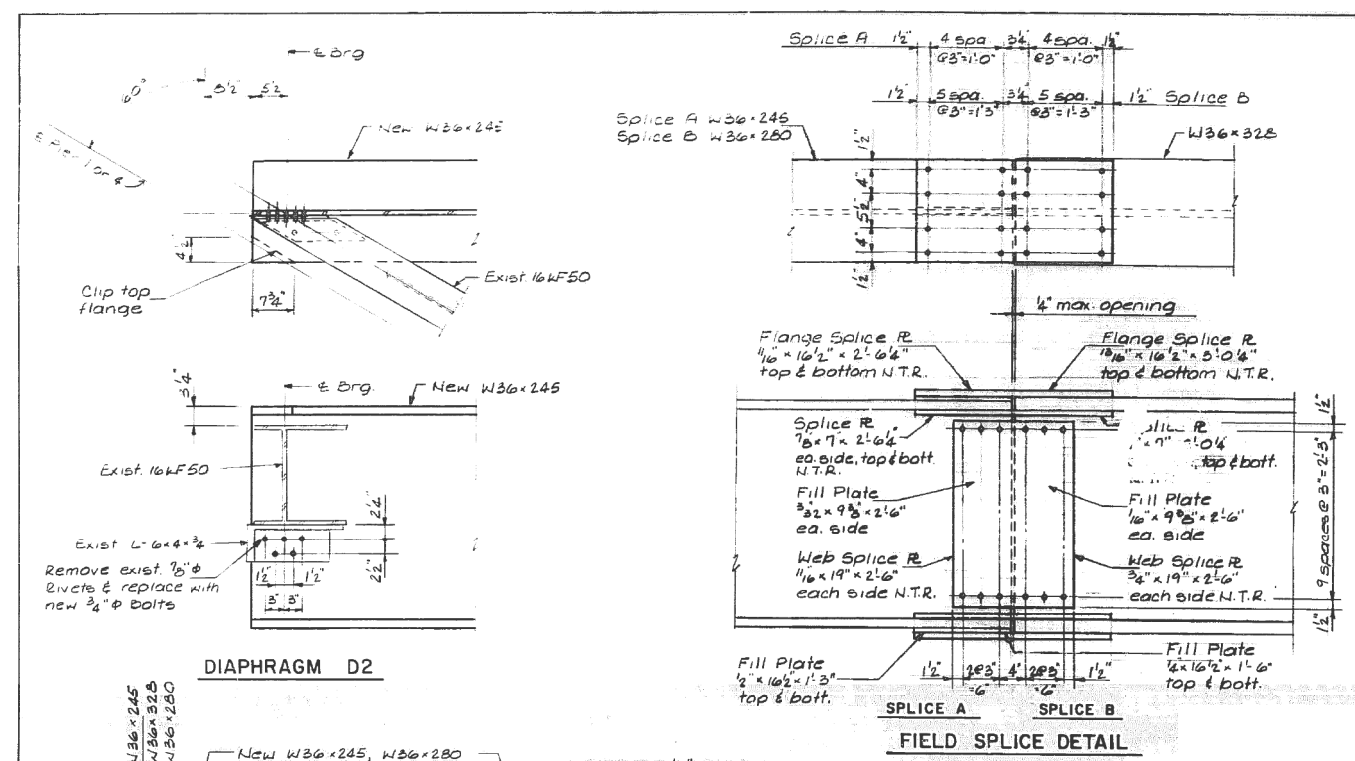
USER NAME = Hassam	DESIGNED -	REVISED -
	DRAWN -	REVISED -
PLOT SCALE = 100.0000" / in.	CHECKED -	REVISED -
PLOT DATE = 2/8/2019	DATE -	REVISED -

STATE OF ILLINOIS
DEPARTMENT OF TRANSPORTATION

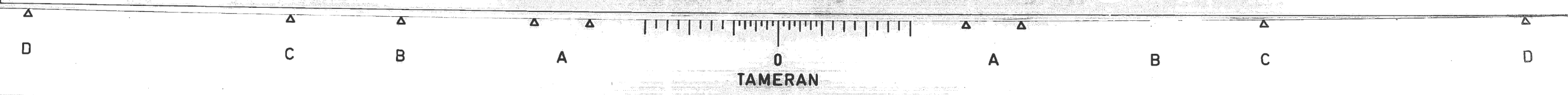
LOCATION 2: EXISTING BRIDGE FRAMING PLAN
IL-31 OVER BNSF RR (SN: 047-0006)

SCALE: SHEET OF SHEETS STA. TO STA.

F.A.P. RTE. 846 860	SECTION 2018-77-BP	COUNTY WILL KENDALL	TOTAL SHEETS 15	SHEET NO. 9
ILLINOIS FED. AID PROJECT			CONTRACT NO. 62H13	



FOR INFORMATION ONLY



MODEL: Default
 FILE: \\miller\B4E\BID\ITECS\Illinois.gov\PWD\DOT\Documents\DOT_Offices\District 1\Projects\ID 1009\100919\Bridg\plan.dgn

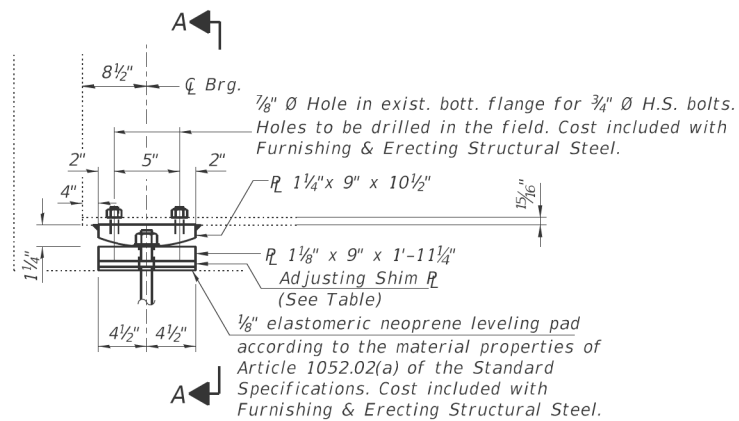
USER NAME = Hassam	DESIGNED -	REVISED -
	DRAWN -	REVISED -
PLOT SCALE = 100.0000" / in.	CHECKED -	REVISED -
PLOT DATE = 2/8/2019	DATE -	REVISED -

STATE OF ILLINOIS
DEPARTMENT OF TRANSPORTATION

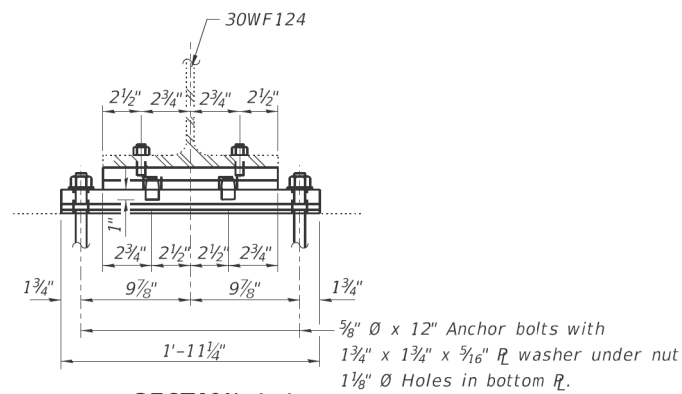
LOCATION 2: EXISTING BRIDGE FRAMING PLAN
IL-31 OVER BNSF RR (SN: 047-0006)

F.A.P. RTE. 846 860	SECTION 2018-77-BP	COUNTY WILL KENDALL	TOTAL SHEETS 15	SHEET NO. 10
SCALE: SHEET OF SHEETS STA. TO STA.			CONTRACT NO. 62H13	
ILLINOIS FED. AID PROJECT				

FOR INFORMATION ONLY

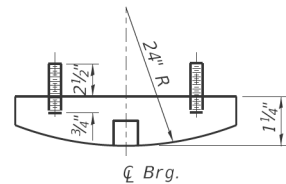


ELEVATION AT ABUTMENTS

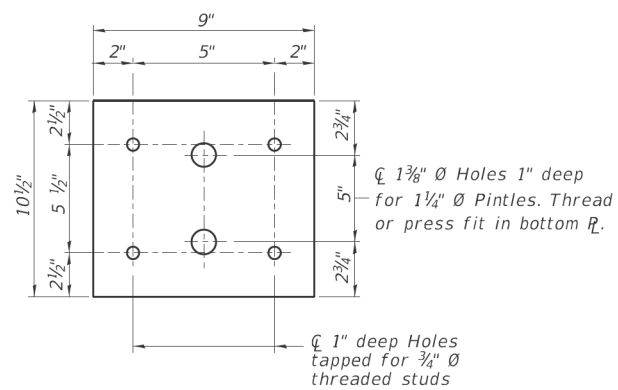


SECTION A-A

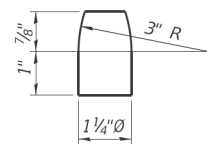
FIXED BEARING



TOP BRG. PLATE DETAIL



PLAN - TOP BRG. PLATE



PINTLE

MODEL: Default
 FILE: Model - 30W124BearingDetails_ILIllinois.gov.PWDOT\Documents\DOT_Offices\District 1\Projects\100919\CADD\100919_Abr_plan.dgn

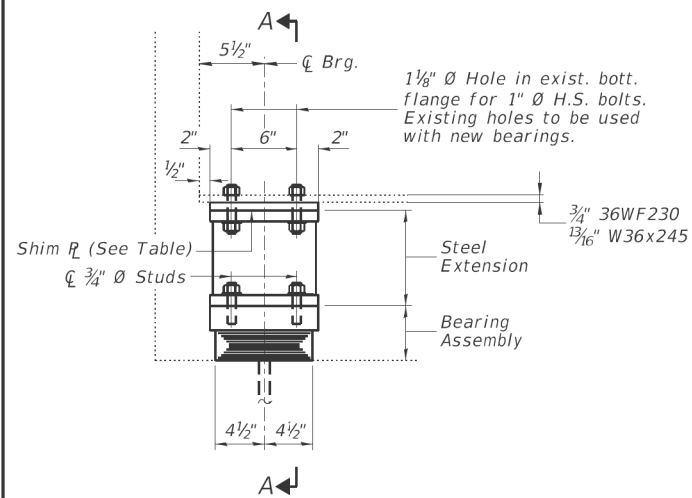
USER NAME = Hassam	DESIGNED -	REVISED -
	DRAWN -	REVISED -
PLOT SCALE = 100.0000' / in.	CHECKED -	REVISED -
PLOT DATE = 2/8/2019	DATE -	REVISED -

STATE OF ILLINOIS
DEPARTMENT OF TRANSPORTATION

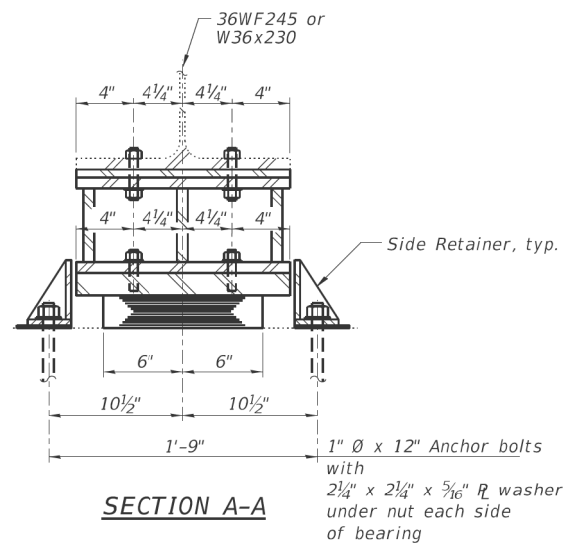
LOCATION 2: EXISTING BRIDGE BEARING DETAILS (N. & S. ABUTMENTS)
IL-31 OVER BNSF RR (SN: 047-0006)

SCALE: SHEET 1 OF 4 SHEETS STA. TO STA.

F.A.P. RTE.	SECTION	COUNTY	TOTAL SHEETS	SHEET NO.
846 860	2018-77-BP	WILL KENDALL	15	11
CONTRACT NO. 62H13			ILLINOIS FED. AID PROJECT	

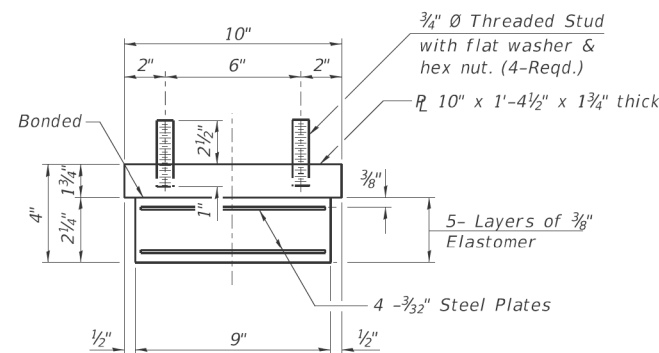


ELEVATION AT PIER 1 SOUTH



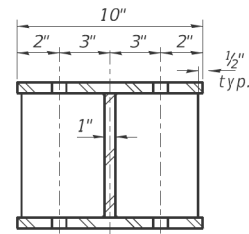
SECTION A-A

TYPE I ELASTOMERIC EXP. BRG.

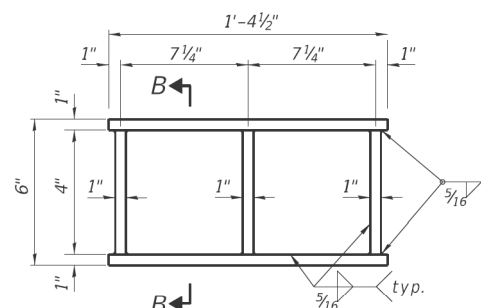


BEARING ASSEMBLY

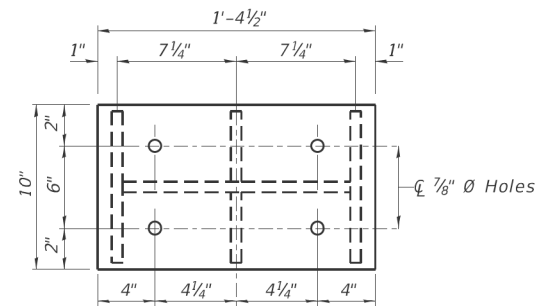
Note:
Shim plates shall not be placed under Bearing Assembly.



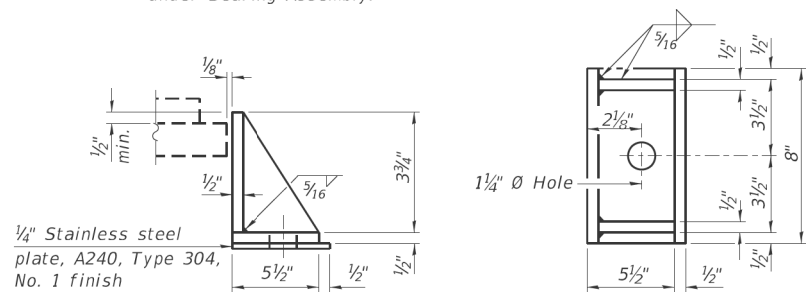
SECTION B-B



ELEVATION STEEL EXTENSION



PLAN STEEL EXTENSION



SIDE RETAINER

Equivalent rolled angle with stiffeners will be allowed in lieu of welded plates.

FOR INFORMATION ONLY

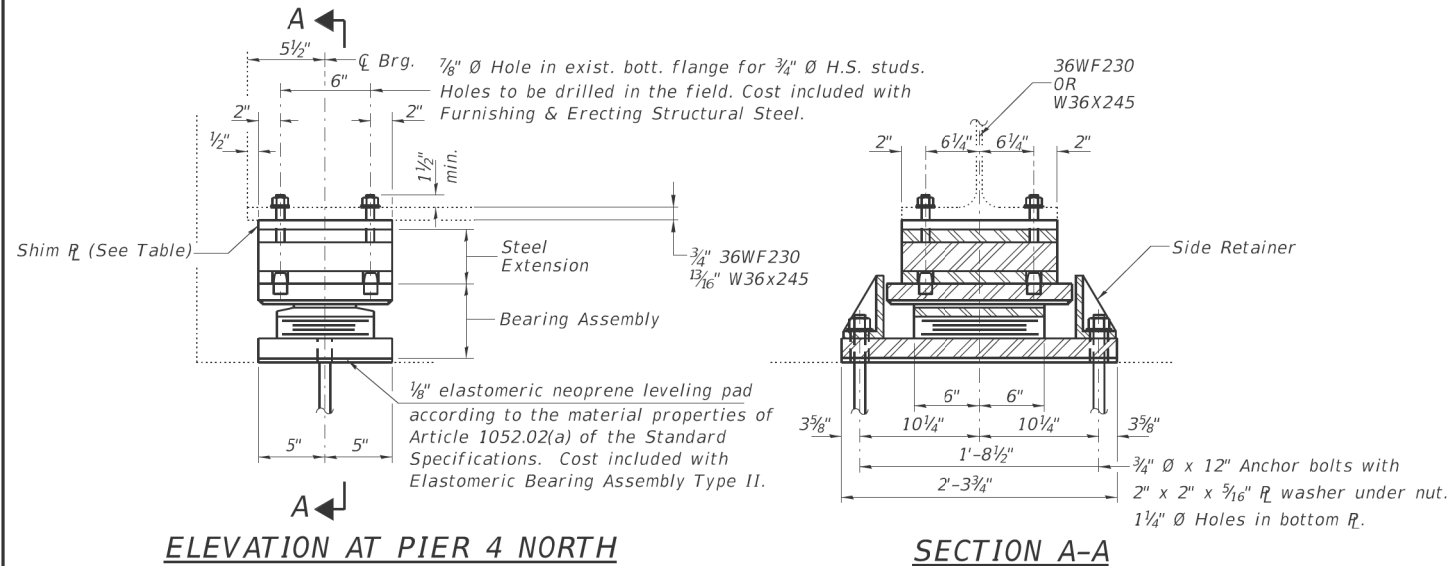
MODEL: Default
 FILE: Model - 36WLB4EIBDINTES, Illinois.gov.PWDOT\Documents\DOT_Offices\District 1\Projects\100919\CADD\Bearing\Design\100919_dbr_plan.dgn

USER NAME = Hassam	DESIGNED -	REVISED -
	DRAWN -	REVISED -
PLOT SCALE = 100.0000' / in.	CHECKED -	REVISED -
PLOT DATE = 2/8/2019	DATE -	REVISED -

STATE OF ILLINOIS
DEPARTMENT OF TRANSPORTATION

LOCATION 2: EXISTING BRIDGE BEARING DETAILS	
IL-31 OVER BNSF RR (SN: 047-0006)	
SCALE:	SHEET 3 OF 4 SHEETS STA. TO STA.

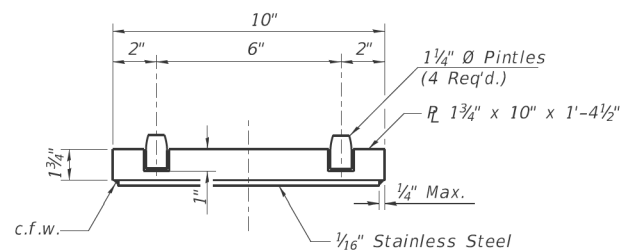
F.A.P. RTE. 846 860	SECTION 2018-77-BP	COUNTY WILL KENDALL	TOTAL SHEETS 15	SHEET NO. 12 A
CONTRACT NO. 62H13			ILLINOIS FED. AID PROJECT	



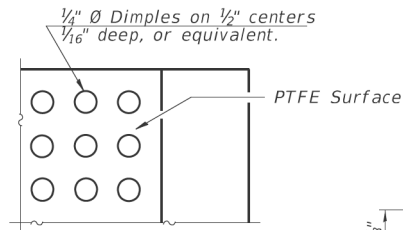
ELEVATION AT PIER 4 NORTH

SECTION A-A

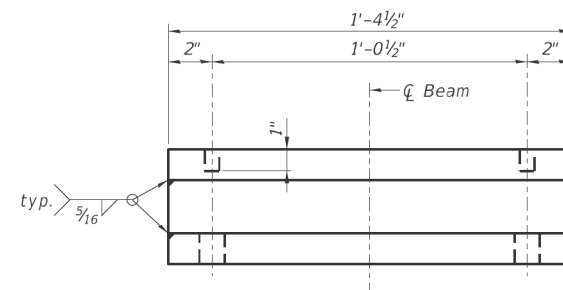
TYPE II ELASTOMERIC EXP. BRG.



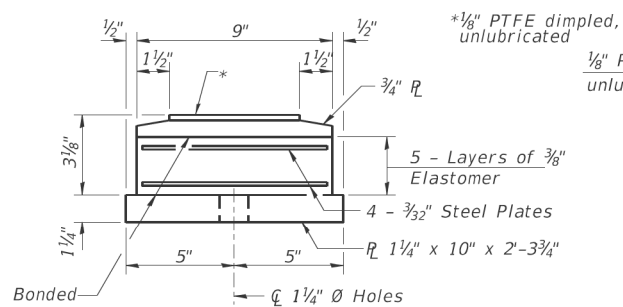
TOP BEARING ASSEMBLY



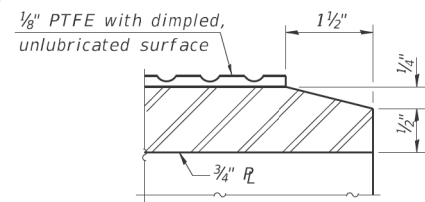
PLAN-PTFE SURFACE



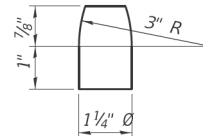
END VIEW STEEL EXTENSION



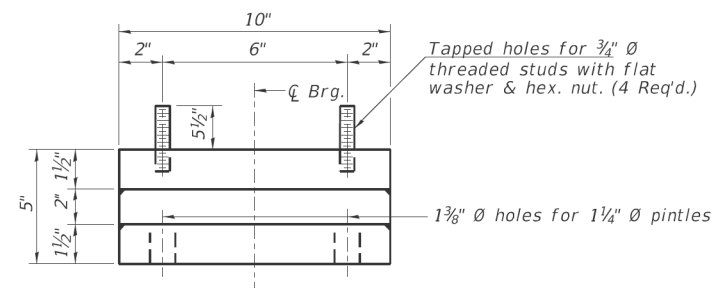
BOTTOM BEARING ASSEMBLY



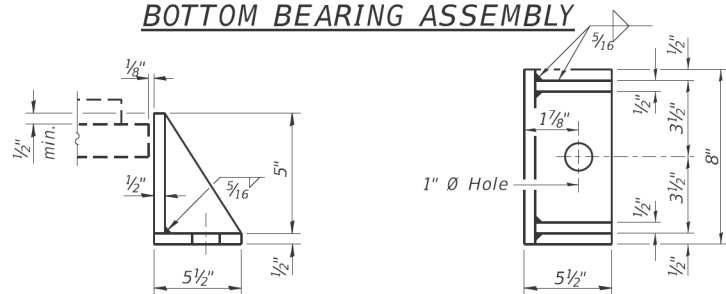
SECTION THRU PTFE



PINTLE



ELEVATION STEEL EXTENSION



SIDE RETAINER
Equivalent rolled angle with stiffeners will be allowed in lieu of welded plates.

FOR INFORMATION ONLY

MODEL: Default
FILE: Model - 36WLB4EBINDITEG_ILIllinois.gov.PWD001-DocumentSet.DOT_Offices/District_1/Projects/ID100919/36WLB4EBINDITEG_ILIllinois.gov.PWD001-DocumentSet.DOT_Offices/District_1/Projects/ID100919.dwg: plan.dwg

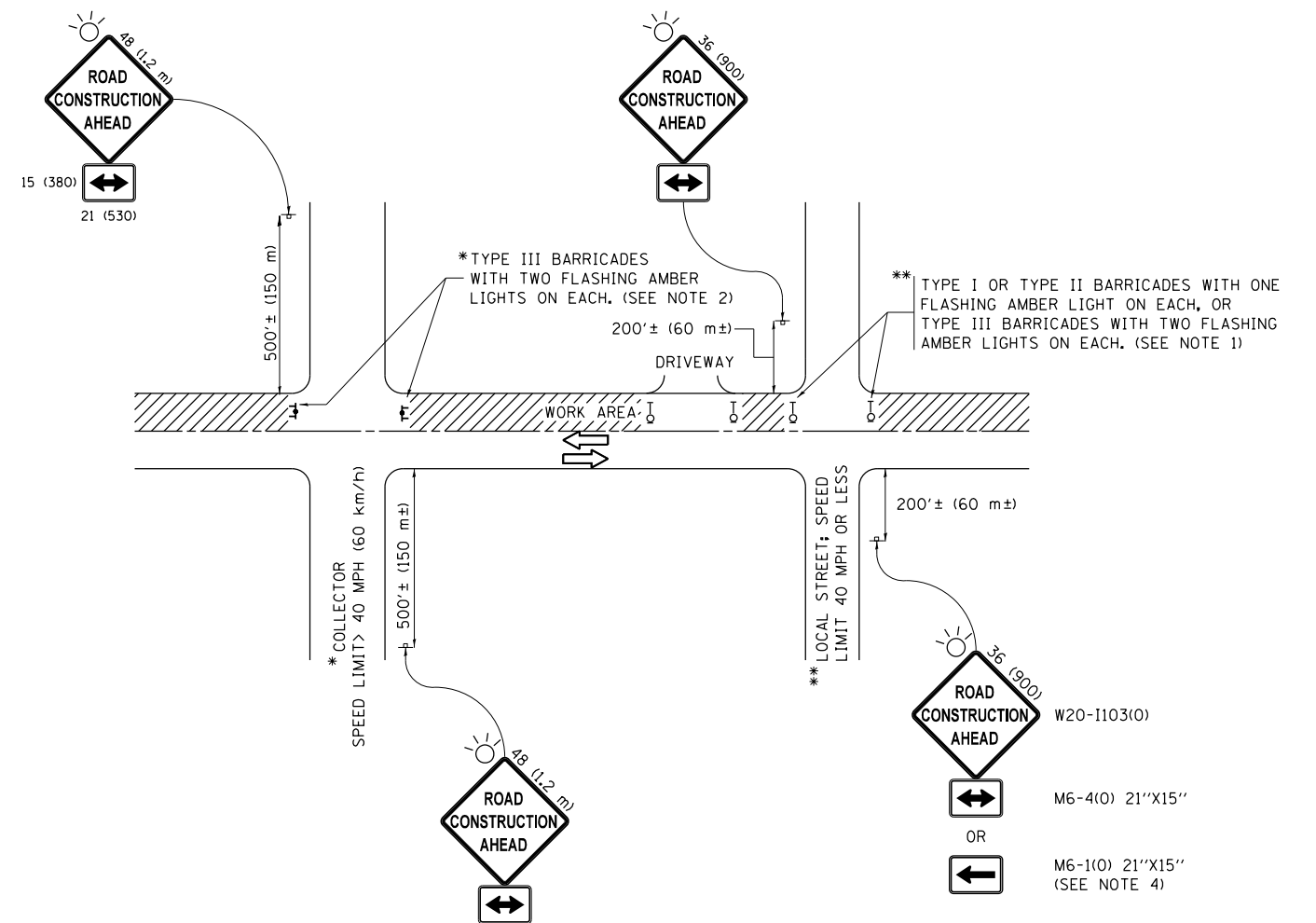
USER NAME = hassam	DESIGNED -	REVISED -
	DRAWN -	REVISED -
PLOT SCALE = 100.0000' / in.	CHECKED -	REVISED -
PLOT DATE = 2/8/2019	DATE -	REVISED -

STATE OF ILLINOIS
DEPARTMENT OF TRANSPORTATION

LOCATION 2: EXISTING BRIDGE BEARING DETAILS
IL-31 OVER BNSF RR (SN: 047-0006)

SCALE: SHEET 4 OF 4 SHEETS STA. TO STA.

F.A.P. RTE. 846 860	SECTION 2018-77-BP	COUNTY WILL KENDALL	TOTAL SHEETS 15	SHEET NO. 12 B
CONTRACT NO. 62H13			ILLINOIS FED. AID PROJECT	



NOTES:

1. SIDE ROAD WITH A SPEED LIMIT OF 40 MPH (60 km/h) OR LESS AS SHOWN ON THE DRAWING AND AS DIRECTED BY THE ENGINEER:
 - a) ONE "ROAD CONSTRUCTION AHEAD" SIGN 36 x 36 (900x900) WITH A FLASHER MOUNTED ON IT APPROXIMATELY 200' (60 m) IN ADVANCE OF THE MAIN ROUTE.
 - b) THE CLOSED PORTION OF THE MAIN ROUTE SHALL BE PROTECTED BY BLOCKING WITH TYPE I, TYPE II OR TYPE III BARRICADES, 1/3 OF THE CROSS SECTION OF THE CLOSED PORTION.
2. SIDE ROAD WITH A SPEED LIMIT GREATER THAN 40 MPH (60 km/h) AS SHOWN ON THE DRAWING AND AS DIRECTED BY THE ENGINEER:
 - a) ONE "ROAD CONSTRUCTION AHEAD" SIGN 48 x 48 (1.2 m x 1.2 m) WITH A FLASHER MOUNTED ON IT APPROXIMATELY 500' (150 m) IN ADVANCE OF THE MAIN ROUTE.
 - b) THE CLOSED PORTION OF THE MAIN ROUTE SHALL BE PROTECTED BY BLOCKING WITH TYPE III BARRICADES, 1/2 OF THE CROSS SECTION OF THE CLOSED PORTION.
3. CONES MAY BE SUBSTITUTED FOR BARRICADES OR DRUMS AT HALF THE SPACING DURING DAY OPERATIONS. CONES SHALL BE A MINIMUM OF 28 (710) IN HEIGHT.
4. WHEN THE SIDE ROAD LIES BETWEEN THE BEGINNING OF THE MAINLINE SIGNING AND THE WORK ZONE, A SINGLE HEADED ARROW (M6-1) SHALL BE USED IN LIEU OF THE DOUBLE HEADED ARROW (M6-4).
5. WHEN WORK IS BEING PERFORMED ON A SIDE ROAD OR DRIVEWAY, FOLLOW THE APPLICABLE STANDARD(S). THE DIRECTIONAL ARROW (M6-1 OR M6-4) SHALL BE COVERED OR REMOVED WHEN NO LONGER CONSISTENT WITH THE TRAFFIC CONTROL SET-UP.
6. ADVANCE WARNING SIGNS ARE TO BE OMITTED ON DRIVEWAYS UNLESS OTHERWISE SPECIFIED IN THE PLANS OR BY THE ENGINEER.
7. THE TRAFFIC CONTROL AND PROTECTION FOR SIDE ROADS, INTERSECTIONS, AND DRIVEWAYS SHALL BE INCLUDED IN THE COST OF SPECIFIED TRAFFIC CONTROL STANDARDS OR ITEMS.

All dimensions are in inches (millimeters) unless otherwise shown.

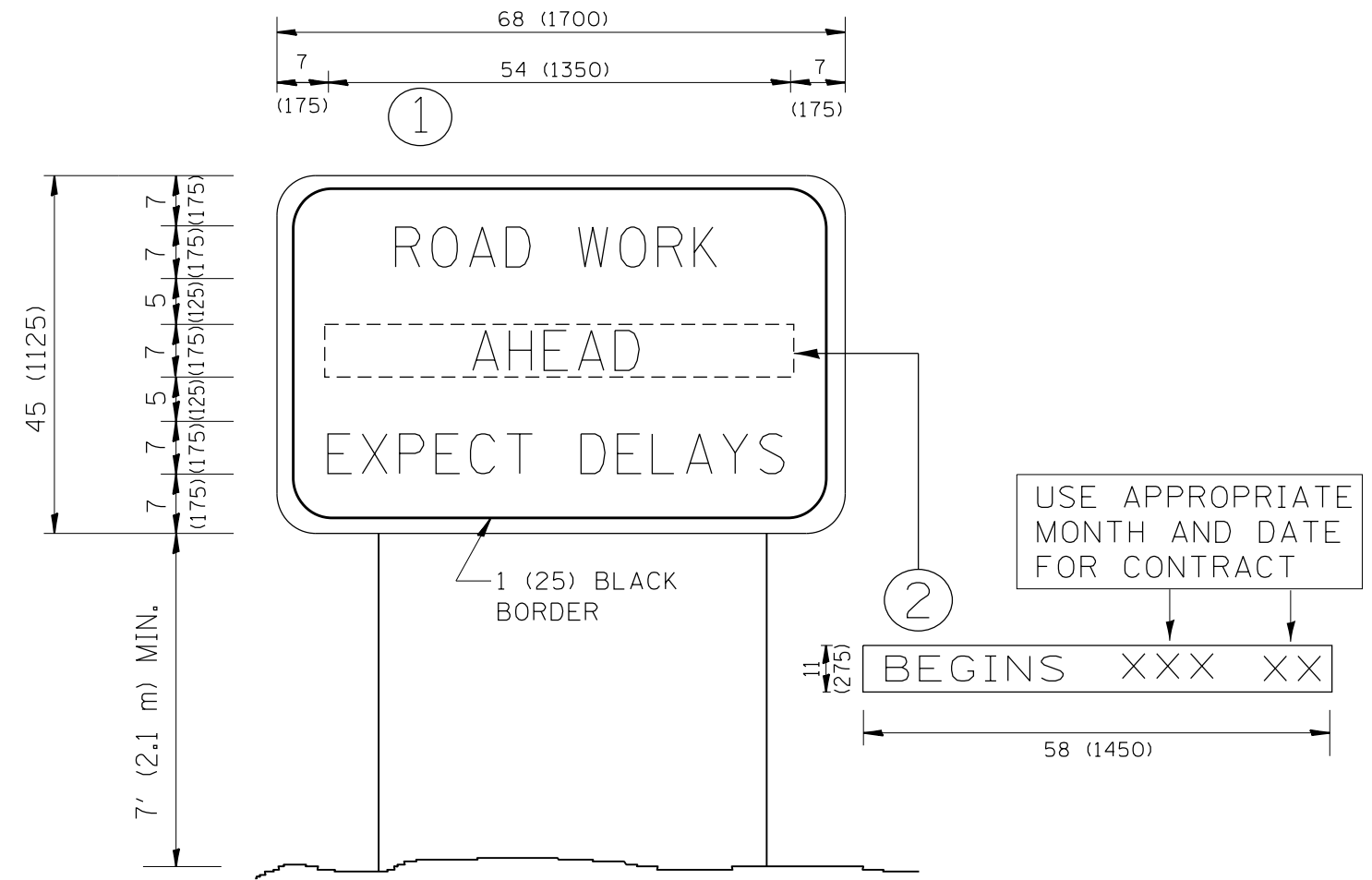
FILE NAME =	USER NAME = hassan	DESIGNED - L.H.A.	REVISED - A. HOUSEH 10-15-96
p:\11084EBIDINTEG\illinois.gov\PIWIDOT\Documents\IDOT Offices\District 1\Projects\DI029\Drawings\Design\DistStd.dgn			REVISED - T. RAMMACHER 01-06-00
Default	PLOT SCALE = 100.0000' / in.	CHECKED -	REVISED - A. SCHUETZE 07-01-13
	PLOT DATE = 2/1/2019	DATE - 06-89	REVISED - A. SCHUETZE 09-15-16

**STATE OF ILLINOIS
DEPARTMENT OF TRANSPORTATION**

**TRAFFIC CONTROL AND PROTECTION FOR
SIDE ROADS, INTERSECTIONS, AND DRIVEWAYS**

SCALE: NONE SHEET 1 OF 1 SHEETS STA. TO STA.

F.A.P. RTE.	SECTION	COUNTY	TOTAL SHEETS	SHEET NO.
846 860	2018-77-BP	WILL KENDALL	15	13
TC-10			CONTRACT NO. 62H13	
ILLINOIS FED. AID PROJECT				



NOTES:

1. USE BLACK LETTERING ON ORANGE BACKGROUND.
2. ERECT SIGNS IN ADVANCE OF THE LOCATION FOR THE "ROAD CONSTRUCTION AHEAD" SIGN AT LOCATIONS AS DIRECTED BY THE ENGINEER.
3. ERECT SIGN ① WITH INSTALLED PANEL ② ONE WEEK PRIOR TO THE START OF CONSTRUCTION.
4. REMOVE PANEL ② SOON AFTER THE START OF CONSTRUCTION.
5. SEE SPECIAL PROVISION FOR "TEMPORARY INFORMATION SIGNING" FOR ADDITIONAL INFORMATION.
6. ONE SIGN ASSEMBLY EQUALS 25.70 SQ. FT. (2.3 SQ. M.)
7. SHALL BE PAID FOR AS TEMPORARY INFORMATION SIGNING.

ALL DIMENSIONS ARE IN INCHES (MILLIMETERS) UNLESS OTHERWISE SHOWN.

FILE NAME =	USER NAME = hassann	DESIGNED -	REVISED - R. MIRS 09-15-97	STATE OF ILLINOIS DEPARTMENT OF TRANSPORTATION	ARTERIAL ROAD INFORMATION SIGN			F.A.P. RTE.	SECTION	COUNTY	TOTAL SHEETS	SHEET NO.
p:\11084EBIDINTEG.illinois.gov\PWIDOT\Documents\DOT Offices\District 1\Projects\DI029\Drawings\Design\DistStd.dgn			REVISED - R. MIRS 12-11-97		846	2018-77-BP	WILL KENDALL	15	15			
	PLOT SCALE = 100.0000' / 1in.	CHECKED -	REVISED - T. RAMMACHER 02-02-99		TC-22			CONTRACT NO. 62H13				
	PLOT DATE = 2/1/2019	DATE -	REVISED - C. JUCIUS 01-31-07		SCALE: NONE	SHEET NO. 1 OF 1 SHEETS	STA. TO STA.	FED. ROAD DIST. NO. 1 ILLINOIS FED. AID PROJECT				

TURN BAY ENTRANCE AT START OF LANE CLOSURE TAPER

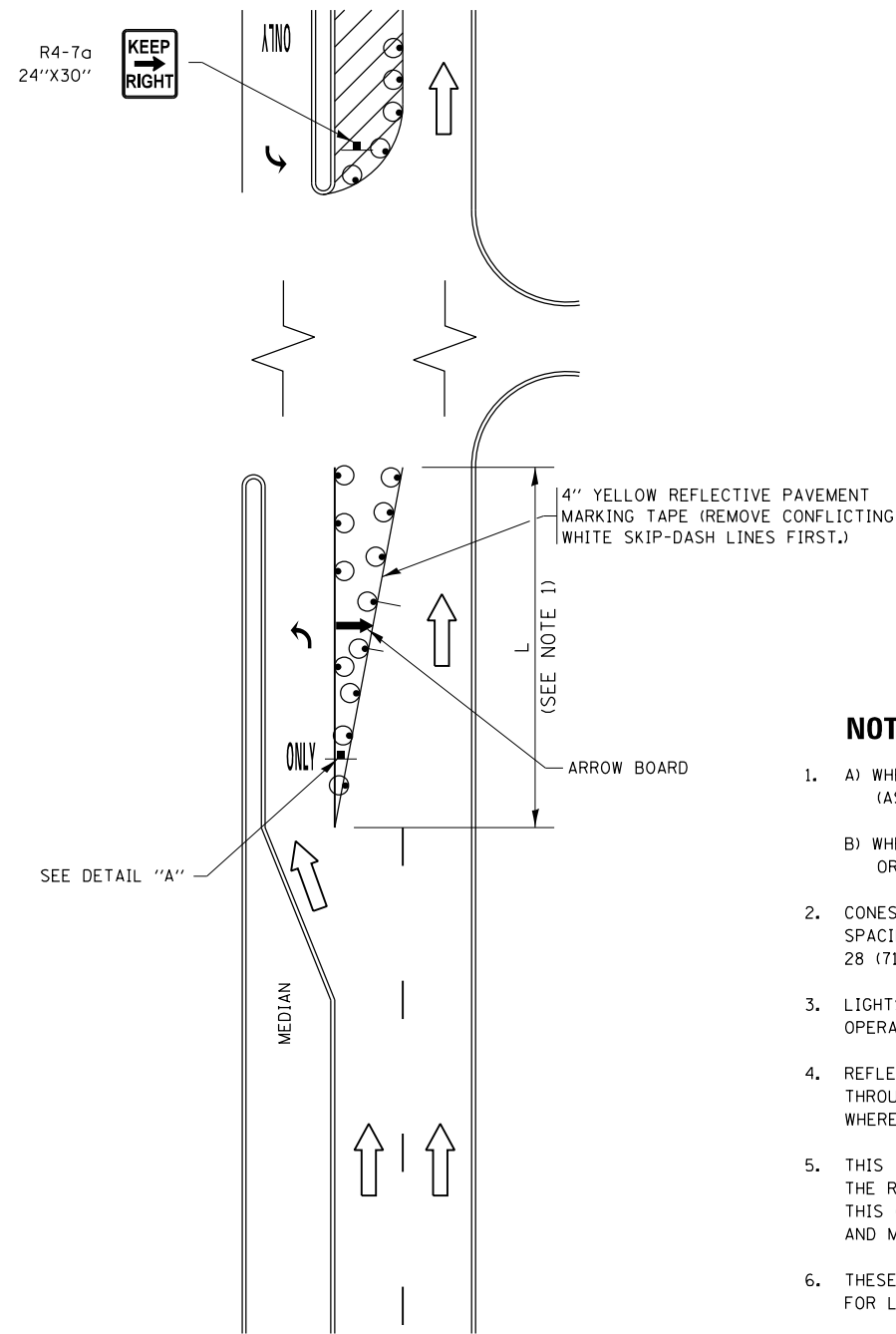


FIGURE 1

TURN BAY ENTRANCE WITHIN A LANE CLOSURE

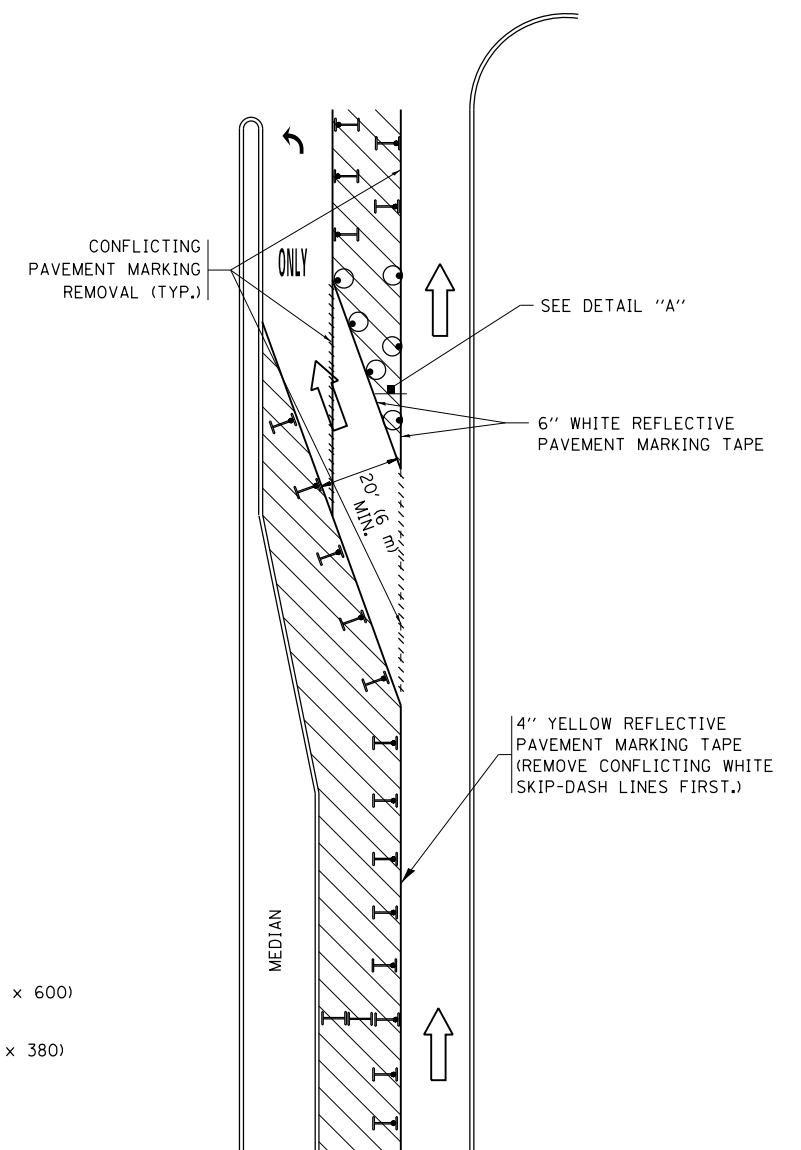
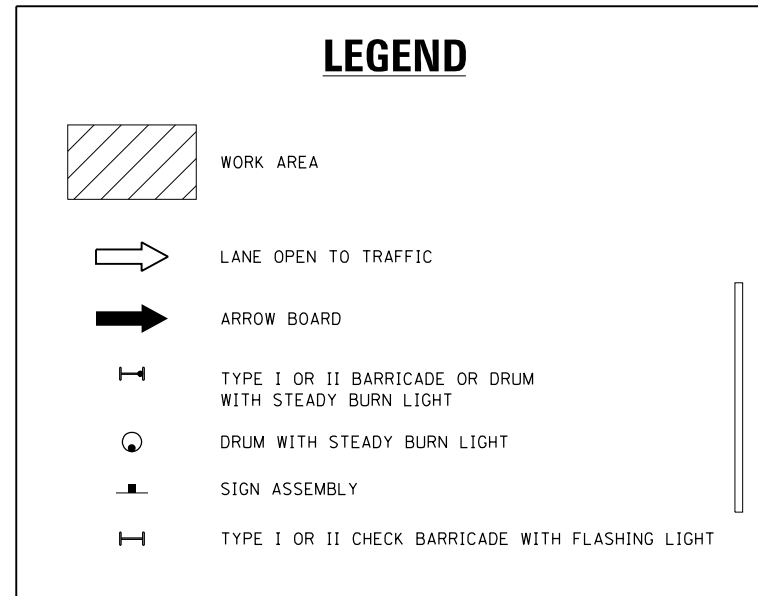
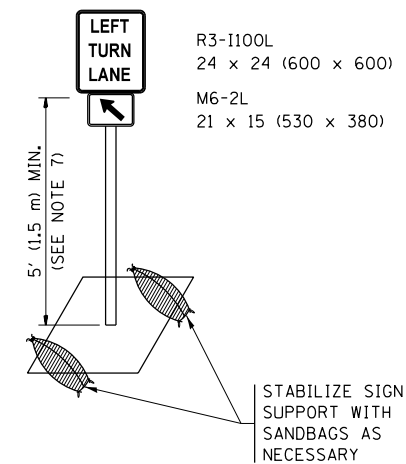


FIGURE 2



NOTES:

1. A) WHEN "L" IS \leq THE STORAGE LENGTH OF THE TURN LANE (AS SHOWN IN FIG. 1), USE FIGURE 1.
B) WHEN "L" IS $>$ THE STORAGE LENGTH OF THE TURN LANE OR THE TURN LANE IS WITHIN THE LANE CLOSURE, USE FIGURE 2.
2. CONES MAY BE SUBSTITUTED FOR BARRICADES OR DRUMS AT HALF THE SPACING DURING DAY OPERATIONS. CONES SHALL BE A MINIMUM OF 28 (710) IN HEIGHT.
3. LIGHTS WILL NOT BE REQUIRED ON BARRICADES OR DRUMS FOR DAY OPERATIONS. ALL LIGHTS SHALL BE MONODIRECTIONAL.
4. REFLECTIVE TEMPORARY PAVEMENT MARKINGS SHALL BE PLACED THROUGHOUT THE BARRICADED AREAS OF EACH TURN BAY AS SHOWN WHERE THE CLOSURE TIME IS GREATER THAN FOURTEEN (14) DAYS.
5. THIS APPLICATION ALSO APPLIES WHEN WORK IS BEING PERFORMED IN THE RIGHT LANE(S) AND THE RIGHT TURN BAY IS TO REMAIN OPEN. UNDER THIS CONDITION, "RIGHT TURN LANE" R3-1100R 24 x 24 (600 x 600) AND M6-2R 21 x 15 (530 x 380) SHALL BE USED.
6. THESE CONTROLS SHALL SUPPLEMENT MAINLINE TRAFFIC CONTROL FOR LANE CLOSURES.
7. THE SIGNS SHALL BE MOUNTED ABOVE THE BARRICADES/DRUMS ON SEPARATE SIGN SUPPORTS THAT MEET NCHRP 350 OR MASH PREQUIREMENTS.
8. TRAFFIC CONTROL AND PROTECTION AT TURN BAYS (TO REMAIN OPEN TO TRAFFIC) SHALL BE INCLUDED IN THE COST OF SPECIFIED TRAFFIC CONTROL STANDARDS OR ITEMS.



DETAIL A

All dimensions are in inches (millimeters) unless otherwise shown.

FILE NAME =	USER NAME = hassann	REVISED - T. RAMMACHER 09-08-94	REVISED - R. BORO 09-14-09	STATE OF ILLINOIS DEPARTMENT OF TRANSPORTATION	TRAFFIC CONTROL AND PROTECTION AT TURN BAYS (TO REMAIN OPEN TO TRAFFIC)	F.A.P. RTE.	SECTION	COUNTY	TOTAL SHEETS	SHEET NO.
pw:\IL\084EBIDINTEG\illinois.gov\PIDOT\Documents\IDOT Offices\District 1\Projects\DI029\REVISED Design\HOUSEH 11-07-95	REVISED - A. HOUSEH 11-07-95	REVISED - A. SCHUETZE 07-01-13	REVISED - A. SCHUETZE 07-01-13			846	2018-77-BP	WILL KENDALL	15	14
Default	PLOT SCALE = 100.0000' / in.	REVISED - A. HOUSEH 10-12-96	REVISED - A. SCHUETZE 09-15-16			TC-14		CONTRACT NO. 62H13		
	PLOT DATE = 2/1/2019	REVISED - T. RAMMACHER 01-06-00	REVISED -			SCALE: NONE		SHEET 1 OF 1 SHEETS		STA. TO STA.