

SUMMARY OF QUANTITIES				CONSTRUCTION CODE				
				6-00761-0000	6-60082-0200	6-00593-0100	6-00593-0000	6-00339-0000
CODE			URBAN TOTAL	90% FED 10% STATE	90% FED 10% STATE	90% FED 10% STATE	90% FED 10% STATE	90% FED 10% STATE
				I-72 0006	BUS-55 0006	SN 084-0076 0013	SN 084-0077 0013	SN 084-0104 0013
70300150	SHORT TERM PAVEMENT MARKING REMOVAL	SQ FT	3,275.0	2,715	560			
70300210	TEMPORARY PAVEMENT MARKING LETTERS AND SYMBOLS	SQ FT	909.0	322	587			
70300230	TEMPORARY PAVEMENT MARKING - LINE 5"	FOOT	31,482.0	11,687	19,795			
70400100	TEMPORARY CONCRETE BARRIER	FOOT	5,575.0	2,237.5	3,337.5			
70400200	RELOCATE TEMPORARY CONCRETE BARRIER	FOOT	2,538.0	963	1,575			
70600260	IMPACT ATTENUATORS, TEMPORARY (FULLY REDIRECTIVE, NARROW), TEST LEVEL 3	EACH	4.0	2	2			
70600332	IMPACT ATTENUATORS, RELOCATE (FULLY REDIRECTIVE, NARROW), TEST LEVEL 3	EACH	4.0	2	2			
* 72000300	SIGN PANEL - TYPE 3	SQ FT	254.0				102	152
* 72501000	TERMINAL MARKER - DIRECT APPLIED	EACH	18.0	11	1			6
* 73304000	OVERHEAD SIGN STRUCTURE - BRIDGE MOUNTED	FOOT	40.0				14	26
* 73602000	REMOVE OVERHEAD SIGN STRUCTURE - BRIDGE MOUNTED	EACH	2.0				1	1
* 78004220	PREFORMED PLASTIC PAVEMENT MARKING, TYPE B - INLAID - LINE 5"	FOOT	3,720.0	2,710	1,010			
* 78004240	PREFORMED PLASTIC PAVEMENT MARKING, TYPE B - INLAID - LINE 8"	FOOT	3,360.0	3,360				
* 78004250	PREFORMED PLASTIC PAVEMENT MARKING, TYPE B - INLAID - LINE 12"	FOOT	452.0	452				
* 78009005	MODIFIED URETHANE PAVEMENT MARKING - LINE 5"	FOOT	39,927.0	33,385	6,542			

2

REV. 4-17-2019

* SPECIALTY ITEM

MODEL: Default
FILE NAME: P:\11108\BEBID\NTEC Illinois.gov\PWD\DOT\Documents\DOT Offices\District 8\Projects\067294\Consultant Data\CADD Sheets\067294-rt-500.dgn

USER NAME = verenskifa	DESIGNED -	REVISED -
DRAWN -	REVISIONS -	
PLOT SCALE = 100.0000' / in.	CHECKED -	REVISED -
PLOT DATE = 2/4/2019	DATE -	REVISED -

**STATE OF ILLINOIS
DEPARTMENT OF TRANSPORTATION**

SUMMARY OF QUANTITIES

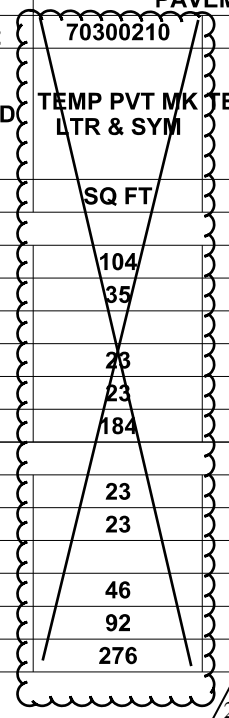
SCALE: SHEET 7 OF 10 SHEETS STA. TO STA.

FA RTE.	SECTION	COUNTY	TOTAL SHEETS	SHEET NO.
*	**	SANGAMON	152	9
			CONTRACT NO. 72J94	
		ILLINOIS FED. AID PROJECT		

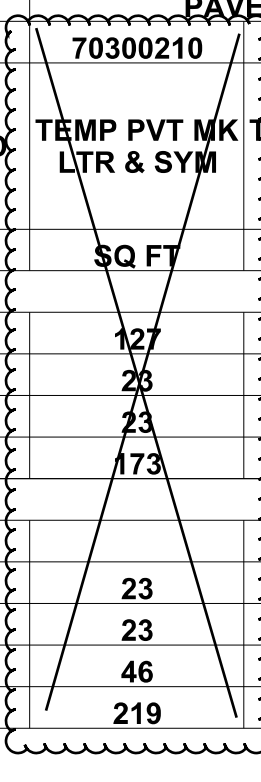
* FAI 72, FAP 666, FAI 72 4 / I-72, I-55 BUS ** (110) RS-2, (84-9) RS-7, BR

REV. - MS

STAGING ITEMS										
STAGE 1A CONSTRUCTION	TRAFFIC CONTROL					PAVEMENT MARKINGS			PAVEMENT	
	64300260	70400100	70400200	78200011	70600332	70300210	70300230	X7030005	35600716	44004250
	IMP ATTEN FRD NAR TL3	TEMP CONCRETE BARRIER	REL TEMP CONCRETE BARRIER	BARRIER WALL REFLECTORS , TYPE C	REL IMP ATTEN FRD NAR TL3	TEMP PVT MK LTR & SYM	TEMP PVT MK LINE 5	TEMP PAVT MKING REMOV	HMA BC WID 10	PAVED SHLD REMOVAL
LOCATION	EACH	FOOT	FOOT	EACH	EACH	SQ FT	FOOT	SQ FT	SQ YD	SQ YD
I-55 BUS NB										
6+16.00 TO 39+59.00						104	3,343	1,497		
39+59.00 TO 49+00.00						35	1,882	819		
49+00.00 TO 51+20.00	1						220	92		
51+20.00 TO 59+00.75		825	663	66		23	1,562	674	344	344
59+00.75 TO 61+00.00						23	150	86	86	86
SUB-TOTAL=	1	825	663	66		184	7,157	3,168	430	430
I-55 BUS SB										
48+75.00 TO 49+50.00						23	150	86	34	34
49+50.00 TO 58+50.00						23	1,800	773	400	400
58+50.00 TO 58+88.00		937.5	913				38	16		
58+88.00 TO 68+15.15	1					46	1,555	694		
SUB-TOTAL=	1	937.5	913			92	3,543	1,569	434	434
TOTAL=	2	1,762.5	1,575	66		276	10,700	4,737	864	864



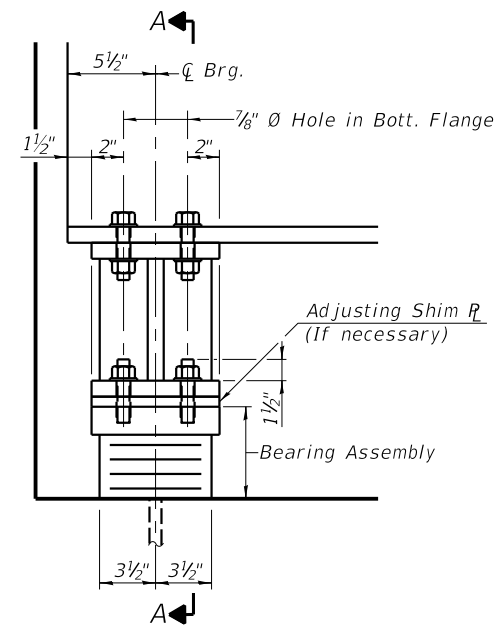
STAGING ITEMS										
STAGE 1B CONSTRUCTION	TRAFFIC CONTROL					PAVEMENT MARKINGS			PAVEMENT	
	64300260	70400100	78200011	70600332	70300210	70300230	X7030005	35600716	44004250	
	IMP ATTEN FRD NAR TL3	TEMP CONCRETE BARRIER	BARRIER WALL REFLECTORS , TYPE C	REL IMP ATTEN FRD NAR TL3	TEMP PVT MK LTR & SYM	TEMP PVT MK LINE 5	TEMP PAVT MKING REMOV	HMA BC WID 10	PAVED SHLD REMOVAL	
LOCATION	EACH	FOOT	EACH	EACH	SQ FT	FOOT	SQ FT	SQ YD	SQ YD	
I-55 BUS NB										
6+16.00 TO 50+81.00					127	4,465	1,987			
50+81.00 TO 59+20.00		662.5	54	1	23	1,678	723	342	342	
59+20.00 TO 60+00.00					23	0	23			
SUB-TOTAL=		662.5	54	1	173	6,143	2,733	342	342	
I-55 BUS SB										
48+75.00 TO 49+50.00						170	71	87	87	
49+50.00 TO 58+60.66		912.5			23	1,800	773	201	201	
58+60.66 TO 68+32.00				1	23	982	433			
SUB-TOTAL=		912.5		1	46	2,952	1,277	288	288	
TOTAL=		1,575	54	2	219	9,095	4,010	630	630	



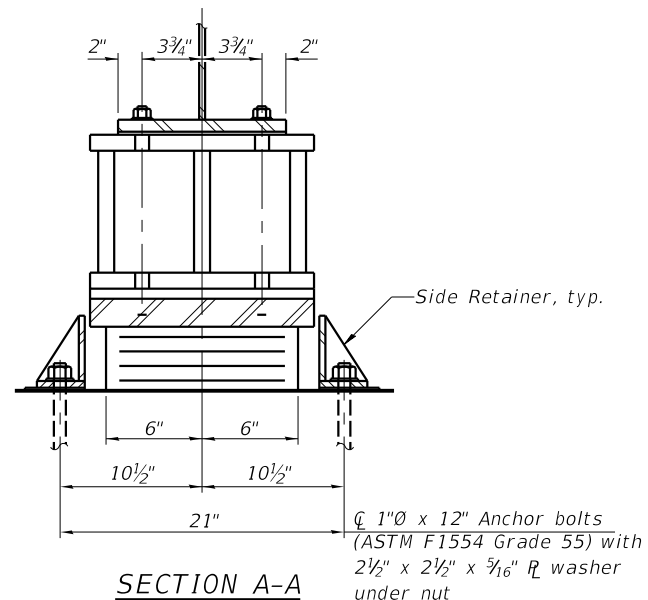
REV. 4-17-2019

MODEL: Default
 FILE: M:\mde\p\14011084\EBID\ITEC\Illinois.gov\RWIDOT\Documents\DOT_Offices\Bartlett_B\Projects\067294\Consultant_Data\CADD_Sheets\067294-eh-ct-shedule.dgn

USER NAME = verenskifa	DESIGNED -	REVISED -	STATE OF ILLINOIS DEPARTMENT OF TRANSPORTATION	SCHEDULE OF QUANTITIES				F.A. * RTE.	SECTION	COUNTY	TOTAL SHEETS	SHEET NO.
DRAWN -	REVISED -	*						**	SANGAMON	152	23	
PLOT SCALE = 140.0300' / in.	CHECKED -	REVISED -		SCALE: SHEET 5 OF 11 SHEETS STA. TO STA.				CONTRACT NO. 72J94		ILLINOIS FED. AID PROJECT		
PLOT DATE = 2/1/2019	DATE -	REVISED -		* FAI 72, FAP 666, FAI 72 4 / I-72, I-55 BUS ** (110) RS-2, (84-9) RS-7, BR								

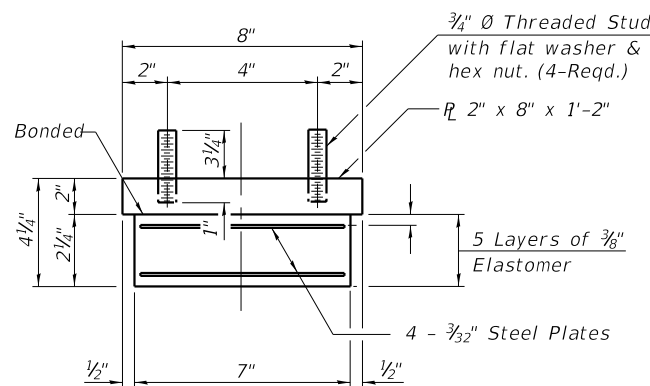


ELEVATION AT ABUT.



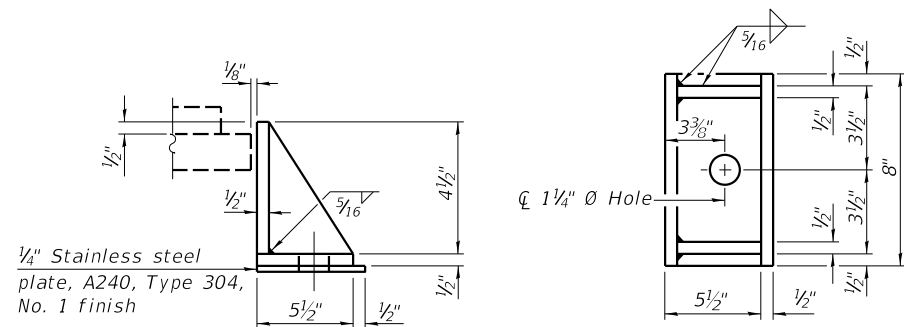
SECTION A-A

TYPE I ELASTOMERIC EXP. BRG.
(At West and East Abutments - 18 required)



BEARING ASSEMBLY

Note:
Shim plates shall not be placed under Bearing Assembly.



SIDE RETAINER

Equivalent rolled angle with stiffeners will be allowed in lieu of welded plates.

Anchor bolts shall be ASTM F1554 all-thread (or an Engineer-approved alternate material) of the grade(s) and diameter(s) specified. The corresponding specified grade of AASHTO M314 anchor bolts may be used in lieu of ASTM F1554.

Drilled and set anchor bolts shall be installed according to Article 521.06 of the Standard Specifications.

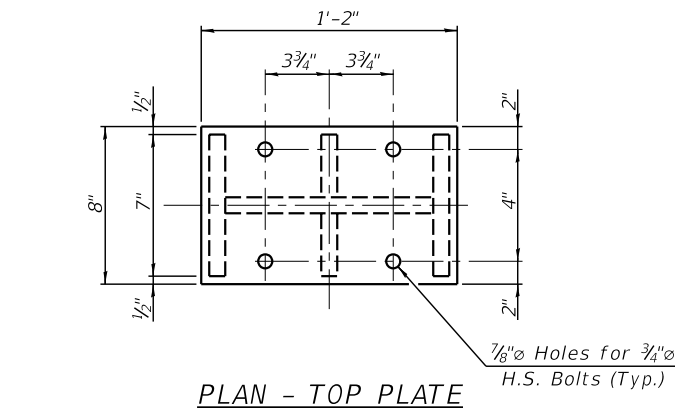
Side retainers and other steel members required for the bearing assembly shall be included in the cost of Elastomeric Bearing Assembly, Type I.

Diaphragm removal and replacement may be required to facilitate drilling holes. Cost shall be included with Furnishing and Erecting Structural Steel.

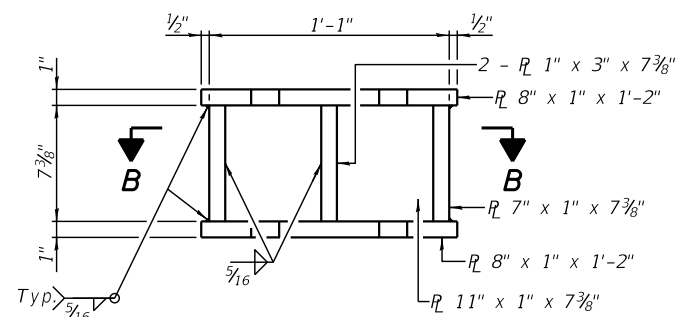
New steel extensions, shim plates and connection bolts are included with Furnishing and Erecting Structural Steel.

Prior to ordering any material, the Contractor shall verify in the field all bearing heights.

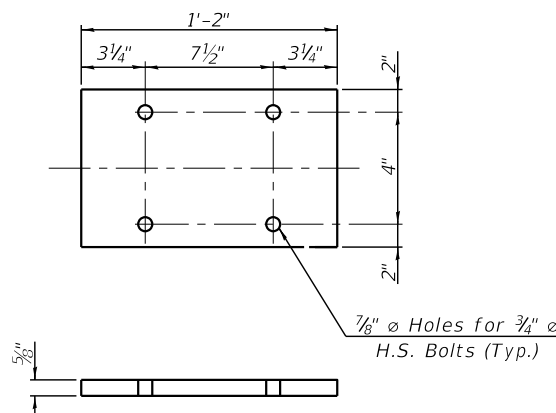
The structural steel bearing plates for the bearings shall conform to the requirements of AASHTO M270 Grade 36.



PLAN - TOP PLATE

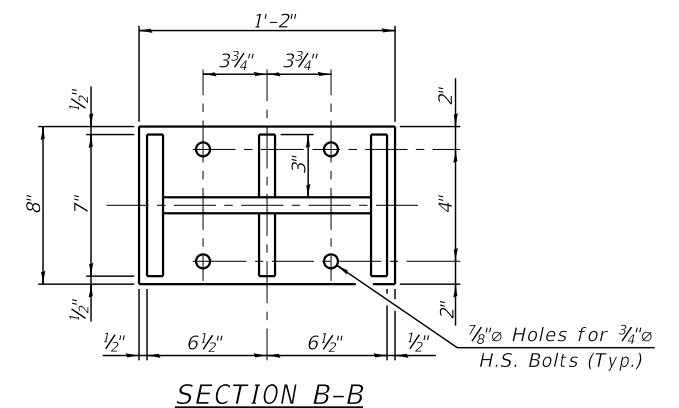


ELEVATION STEEL EXTENSION

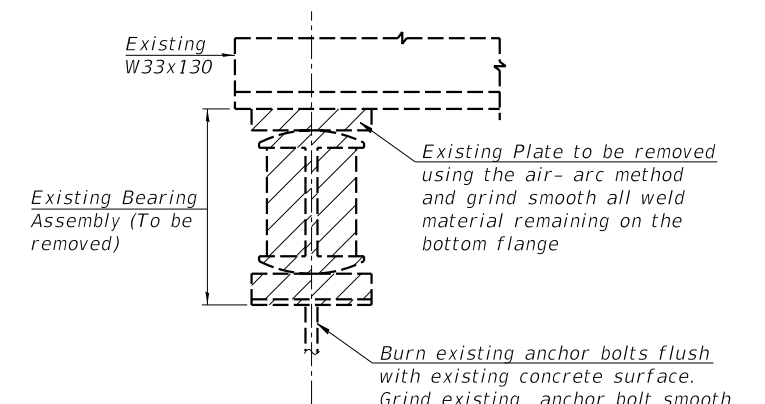


SHIM PLATE DETAIL

(Provide shim plate at beams 6 & 7, both abutments.)



SECTION B-B



EXISTING BEARING REMOVAL DETAIL

The minimum jack capacity provided for "Jack and Remove Existing Bearings" is 32 tons.

INTERIOR GIRDER REACTION TABLE

	W. ABUT.	E. ABUT.
R _{DL} , kips	18.7	14.8
R _{LL} , kips	37.3	37.7
Imp., kips	11.2	11.3
R (Total), kips	67.2	63.8

BILL OF MATERIAL

Item	Unit	Total
Elastomeric Bearing Assembly Type I	Each	18
Anchor Bolts, 1"	Each	36
Furnishing and Erecting Structural Steel	Pound	2480

I-2E-1

8-11-2017



USER NAME =	DESIGNED - KES	REVISED - 4/17/2019 KES
PLOT SCALE =	CHECKED - MAH	REVISED -
PLOT DATE =	DRAWN - JRD	REVISED -
	CHECKED - KES	REVISED -

STATE OF ILLINOIS
DEPARTMENT OF TRANSPORTATION

BEARING DETAILS
STRUCTURE NO. 084-0076

SHEET NO. 11 OF 17 SHEETS

F.A.I. RTE.	SECTION	COUNTY	TOTAL SHEETS	SHEET NO.
•	(110)RS-2, (84-9)RS-7, BR	SANGAMON	152	82
CONTRACT NO. 72J94				

ILLINOIS FED. AID PROJECT
• FAI 72, FAP 666, FAI 72 4 / I-72, I-55 BUS

REV. 4-17-2019