

| F.A.I. RTE. | SECTION | COUNTY | TOTAL SHEETS | SHEET NO. |
|-------------|-----------------|----------|--------------------|-----------|
| 57 | (46-1) SFY, CBL | KANKAKEE | 8 | 1 |
| | | ILLINOIS | CONTRACT NO. 66J07 | |

04-26-2019 LETTING ITEM 083

STATE OF ILLINOIS
DEPARTMENT OF TRANSPORTATION

PROPOSED HIGHWAY PLANS

FAI ROUTE 57 (I-57)
SECTION (46-1) SFY, CBL
PROJECT: HSIP - ZE60 (239)
HIGH TENSION CABLE MEDIAN BARRIER
KANKAKEE COUNTY

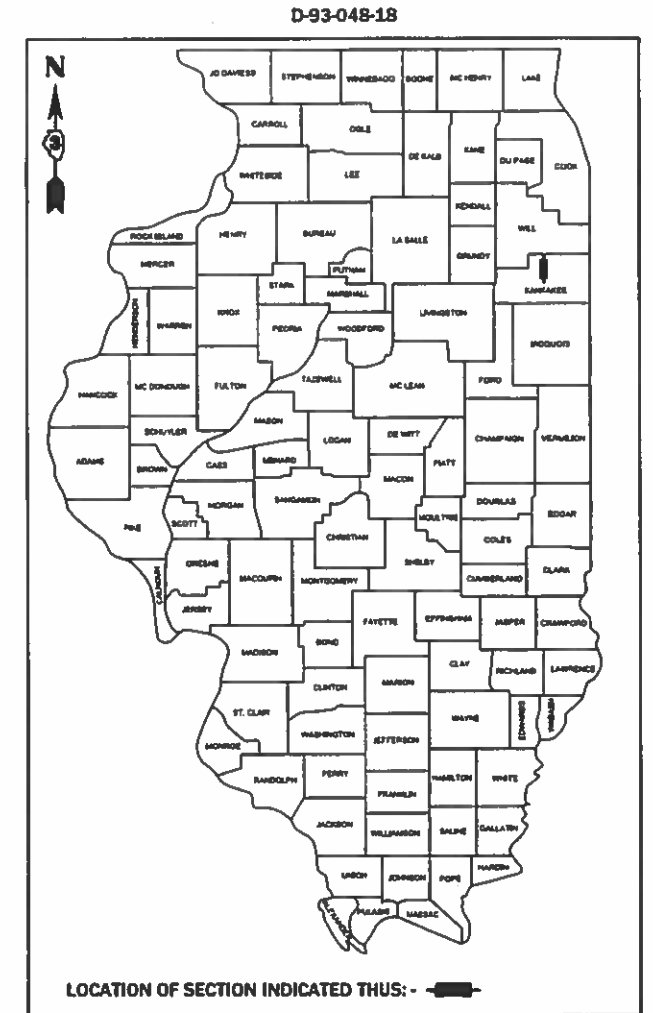
C-93-052-18

INDEX OF SHEETS

- 1 COVER SHEET
- 2 GENERAL NOTES
- 3-4 SUMMARY OF QUANTITIES
- 5 TYPICAL SECTIONS
- 6 SCHEDULE
- 7-8 DETAILS

HIGHWAY STANDARDS

- 000001-07 STANDARD SYMBOLS, ABBREVIATIONS AND PATTERNS
- 001006 DECIMAL OF AN INCH AND OF A FOOT
- 701101-05 OFF-ROAD OPERATIONS, MULTILANE, 15' (4.5 m) TO 24" (600 mm) FROM PAVEMENT EDGE
- 701106-02 OFF-ROAD OPERATIONS, MULTILANE, MORE THAN 15' (4.5 m) AWAY
- 701406-12 LANE CLOSURE, FREEWAY/EXPRESSWAY, DAY OPERATIONS ONLY
- 701901-08 TRAFFIC CONTROL DEVICES

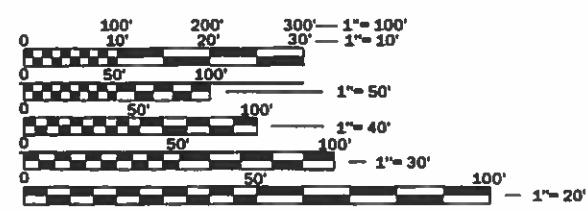


URBAN INTERSTATE
2017 ADT = 31,800
P.V. = 78.3% S.U. = 3.1% M.U. = 18.6%

STATE OF ILLINOIS
DEPARTMENT OF TRANSPORTATION

SUBMITTED 02/04 2019
Ric Marshall REGIONAL ENGINEER
March 22, 2019
[Signature] ENGINEER OF DESIGN AND ENVIRONMENT
March 22, 2019
[Signature] DIRECTOR OF HIGHWAYS PROJECT IMPLEMENTATION

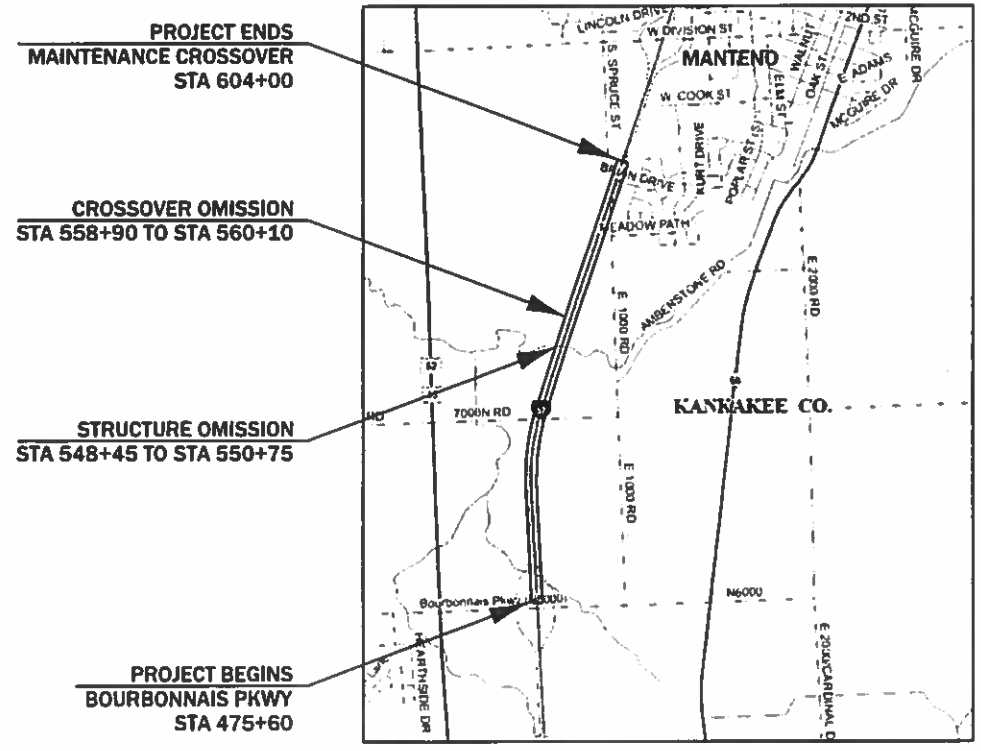
PRINTED BY THE AUTHORITY
OF THE STATE OF ILLINOIS



FULL SIZE PLANS HAVE BEEN PREPARED USING STANDARD ENGINEERING SCALES. REDUCED SIZED PLANS WILL NOT CONFORM TO STANDARD SCALES. IN MAKING MEASUREMENTS ON REDUCED PLANS, THE ABOVE SCALES MAY BE USED.

J.U.L.I.E.
JOINT UTILITY LOCATION INFORMATION FOR EXCAVATION
1-800-892-0123
OR 811

PROJECT ENGINEER: JOE KANNEL, P.E.
UNIT CHIEF: MARC BUDZYNSKI, P.E.
DISTRICT 3 NO. (815) 434-6131
CONTRACT NO. 66J07



GROSS LENGTH = 12,840 FT. = 2.43 MILES
NET LENGTH = 12,490 FT. = 2.37 MILES

GENERAL NOTES

FOR STABILIZATION, ALL TYPE III BARRICADES WILL REQUIRE A MINIMUM OF FOUR SAND BAGS PER BARRICADE.

ABANDONED UNDERGROUND UTILITIES THAT CONFLICT WITH CONSTRUCTION SHALL BE DISPOSED OF OUTSIDE THE LIMITS OF THE RIGHT OF WAY ACCORDING TO ARTICLE 202.03 OF THE STANDARD SPECIFICATIONS AND AS DIRECTED BY THE ENGINEER. THIS WORK WILL NOT BE PAID FOR SEPARATELY, BUT WILL BE INCLUDED IN THE COST OF WEED CONTROL MOWING STRIP (SPECIAL).

ANY REFERENCE TO A STANDARD IN THESE PLANS SHALL BE INTERPRETED TO MEAN THE EDITION AS INDICATED BY THE SUBNUMBER SHOWN IN THE LIST OF STANDARDS OR THE COPY INCLUDED IN THESE PLANS.

ALL DAMAGE TO DEPARTMENT OWNED UNDERGROUND FACILITIES, CAUSED BY THE CONTRACTOR SHALL BE REPAIRED TO THE SATISFACTION OF THE DEPARTMENT AT THE CONTRACTOR'S EXPENSE. THIS SHALL INCLUDE ALL TEMPORARY REPAIRS REQUIRED TO KEEP THE FACILITY OPERATIONAL WHILE MATERIAL IS BEING OBTAINED TO MAKE PERMANENT REPAIRS. SPLICING OF ELECTRIC CABLE WILL NOT BE ALLOWED. ELECTRIC CABLE SHALL BE REPLACED FROM POLE TO POLE OR CONTROLLER.

THE CONTRACTOR SHALL CONTACT JULIE AT LEAST 48 HOURS PRIOR TO ANY WORK BEING DONE TO DETERMINE WHICH UTILITIES ARE IN THE AREA.

COMMITMENTS:

STATE OF ILLINOIS
DEPARTMENT OF TRANSPORTATION
DISTRICT THREE
AS BUILT INFORMATION

SUPERVISING CONSTRUCTION FIELD ENGINEER

RESIDENT ENGINEER / TECHNICIAN

START & END DATES
OF CONSTRUCTION:

INSPECTORS:

STATE OF ILLINOIS
DEPARTMENT OF TRANSPORTATION
DISTRICT THREE

PREPARED BY: *De Brunic*
DISTRICT STUDIES & PLANS ENGINEER

DATE: 2/04/19

EXAMINED BY: *KSV*
DISTRICT CONSTRUCTION ENGINEER

Michael Ash
DISTRICT MATERIALS ENGINEER

Conroy
DISTRICT OPERATIONS ENGINEER

STATE OF ILLINOIS
DEPARTMENT OF TRANSPORTATION

GENERAL NOTES

| | | | |
|---|------------------------------|------------|-----------|
| FILE NAME = | USER NAME = budzynskim | DESIGNED - | REVISED - |
| pwc:\IL084EB\INTEG\Illinois.gov\FWIDOT\Documents\DOT Offices\District 3\Projects\D366J07\CADData\D366J07-shl-cv.dwg | | DRAWN - | REVISED - |
| Default | PLOT SCALE = 100.0000' / in. | CHECKED - | REVISED - |
| | PLOT DATE = 2/1/2019 | DATE - | REVISED - |

SCALE: SHEET OF SHEETS STA. TO STA.

| F.A.I. RTE. | SECTION | COUNTY | TOTAL SHEETS | SHEET NO. |
|---------------------------|-----------------|----------|--------------|-----------|
| 57 | (46-1) SFY, CBL | KANKAKEE | 8 | 2 |
| CONTRACT NO. 66J07 | | | | |
| ILLINOIS FED. AID PROJECT | | | | |

| CODE NO. | ITEM | UNIT | TOTAL QUANTITY | CONSTR. CODE | |
|------------|--|--------|----------------|--------------|-----------|
| | | | | 90% FED | 10% STATE |
| | | | | ROADWAY | |
| | | | | 0021 | |
| | | | | RURAL | |
| 64401100 | HIGH TENSION CABLE MEDIAN BARRIER | FOOT | 12490 | | 12490 |
| 64401300 | HIGH TENSION CABLE MEDIAN BARRIER TERMINALS | EACH | 6 | | 6 |
| * 66900200 | NON-SPECIAL WASTE DISPOSAL | CU YD | 631 | | 631 |
| * 66900530 | SOIL DISPOSAL ANALYSIS | EACH | 1 | | 1 |
| * 66901001 | REGULATED SUBSTANCES PRE-CONSTRUCTION PLAN | L SUM | 1.0 | | 1.0 |
| * 66901002 | ON-SITE MONITORING OF REGULATED SUBSTANCES | CAL DA | 5 | | 5 |
| * 66901003 | REGULATED SUBSTANCES FINAL CONSTRUCTION REPORT | L SUM | 1.0 | | 1.0 |
| 67100100 | MOBILIZATION | L SUM | 1.0 | | 1.0 |
| 70107025 | CHANGEABLE MESSAGE SIGN | CAL DA | 90 | | 90 |
| 72501100 | TERMINAL MARKER - POST MOUNTED | EACH | 6 | | 6 |
| X0325231 | CABLE GUARD MARKER | EACH | 314 | | 314 |
| X0325667 | WEED CONTROL MOWING STRIP (SPECIAL) | SQ YD | 5551 | | 5551 |
| X0326880 | MESSAGE BOARD VEHICLE DRIVER | HOUR | 160 | | 160 |
| X0326907 | PORTABLE, VEHICLE MOUNTED, CHANGEABLE MESSAGE SIGN | CAL MO | 2 | | 2 |

*= SPECIALTY ITEM

| | | | |
|---|------------------------------|------------|-----------|
| FILE NAME = | USER NAME = budzynsklm | DESIGNED - | REVISED - |
| pw:\il084EBIDINTEG\ilnotes.gov\PWIDOT\Documents\DOT Office\District 3\Projects\0366J07\CADDData\0366J07-sht-cov | | DRAWN - | REVISED - |
| Default | PLOT SCALE = 100.0000' / in. | CHECKED - | REVISED - |
| | PLOT DATE = 2/1/2019 | DATE - | REVISED - |

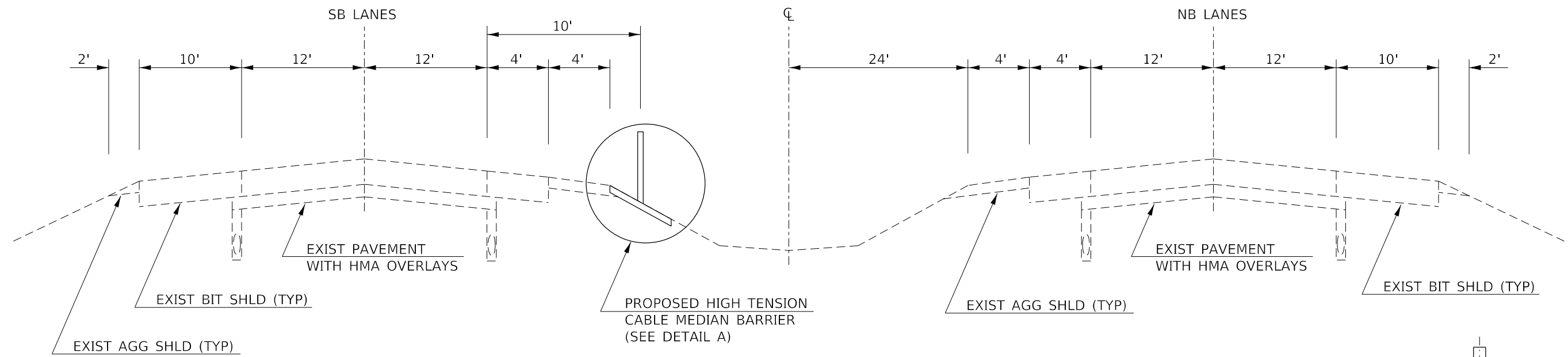
**STATE OF ILLINOIS
DEPARTMENT OF TRANSPORTATION**

| SUMMARY OF QUANTITIES | | | |
|-----------------------|-------|----|--------|
| SCALE: | SHEET | OF | SHEETS |
| | | | |
| | | | |

| | | | | |
|---------------------------|-----------------|----------|--------------|-----------|
| F.A.I. RTE. | SECTION | COUNTY | TOTAL SHEETS | SHEET NO. |
| 57 | (46-1) SFY, CBL | KANKAKEE | 8 | 3 |
| CONTRACT NO. 66J07 | | | | |
| ILLINOIS FED. AID PROJECT | | | | |

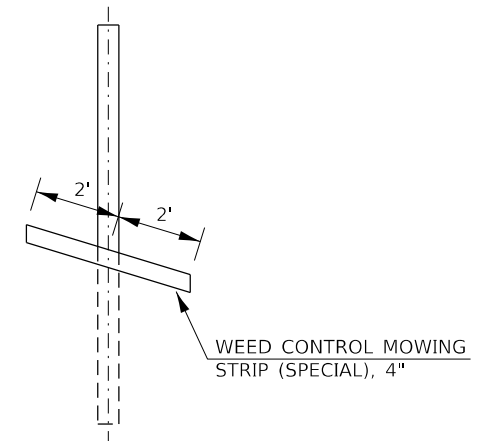
| CODE NO. | ITEM | UNIT | TOTAL QUANTITY | CONSTR. CODE | |
|----------|--|-------|----------------|--------------|-----------|
| | | | | 90% FED | 10% STATE |
| | | | | ROADWAY | |
| | | | | 0021 | |
| | | | | RURAL | |
| X7010600 | TRAFFIC CONTROL AND PROTECTION, STANDARD 701406, SPECIAL | L SUM | 1.0 | | 1.0 |
| X9700018 | TEMPORARY PORTABLE RUMBLE STRIPS | EACH | 2 | | 2 |

| | | | | | | | | | | | |
|---|------------------------------|------------|-----------|---|------------------------------|--------------------|----------|--------|--------------|-----------|---------|
| FILE NAME = | USER NAME = budzynsklm | DESIGNED - | REVISED - | STATE OF ILLINOIS DEPARTMENT OF TRANSPORTATION | SUMMARY OF QUANTITIES | F.A.I. RTE. | SECTION | COUNTY | TOTAL SHEETS | SHEET NO. | |
| pw:\il084EBIDINTEG\ilnotes.gov\PWIDOT\Documents\DOT Office\District 3\Projects\0366J07\CADDData\0366J07-sht-cov | DRAWN - | REVISED - | 57 | | | (46-1) SFY, CBL | KANKAKEE | 8 | 4 | | |
| Default | PLOT SCALE = 100.0000' / in. | CHECKED - | REVISED - | | | CONTRACT NO. 66J07 | | | | | |
| | PLOT DATE = 2/1/2019 | DATE - | REVISED - | | | SCALE: | SHEET | OF | SHEETS | STA. | TO STA. |



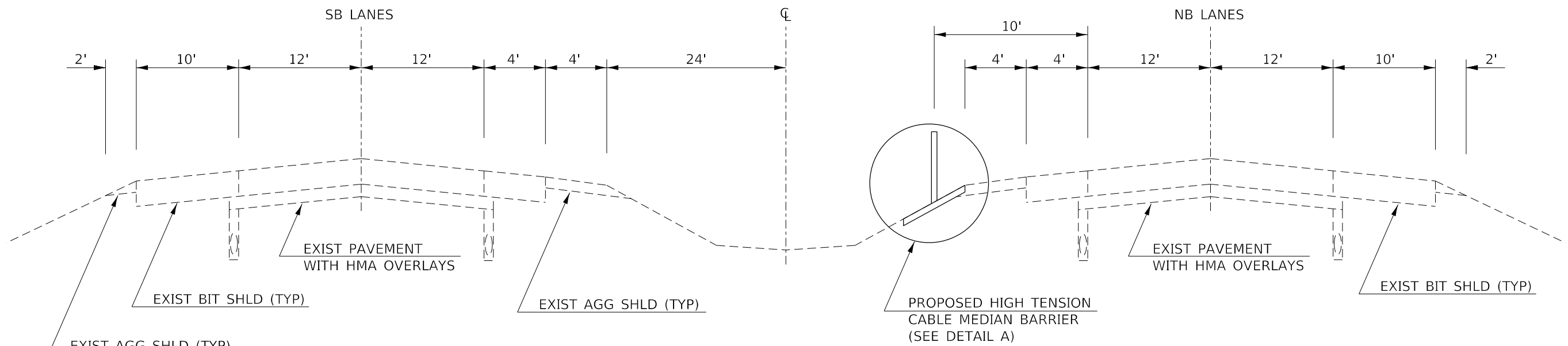
PROPOSED TYPICAL SECTION

STA 475+60 TO STA 548+45
 STA 560+10 TO STA 604+00



DETAIL A

NOTE: CABLE GUARDRAIL ADJACENT TO THE NB LANES
 WILL BE A MIRROR IMAGE OF THIS DETAIL

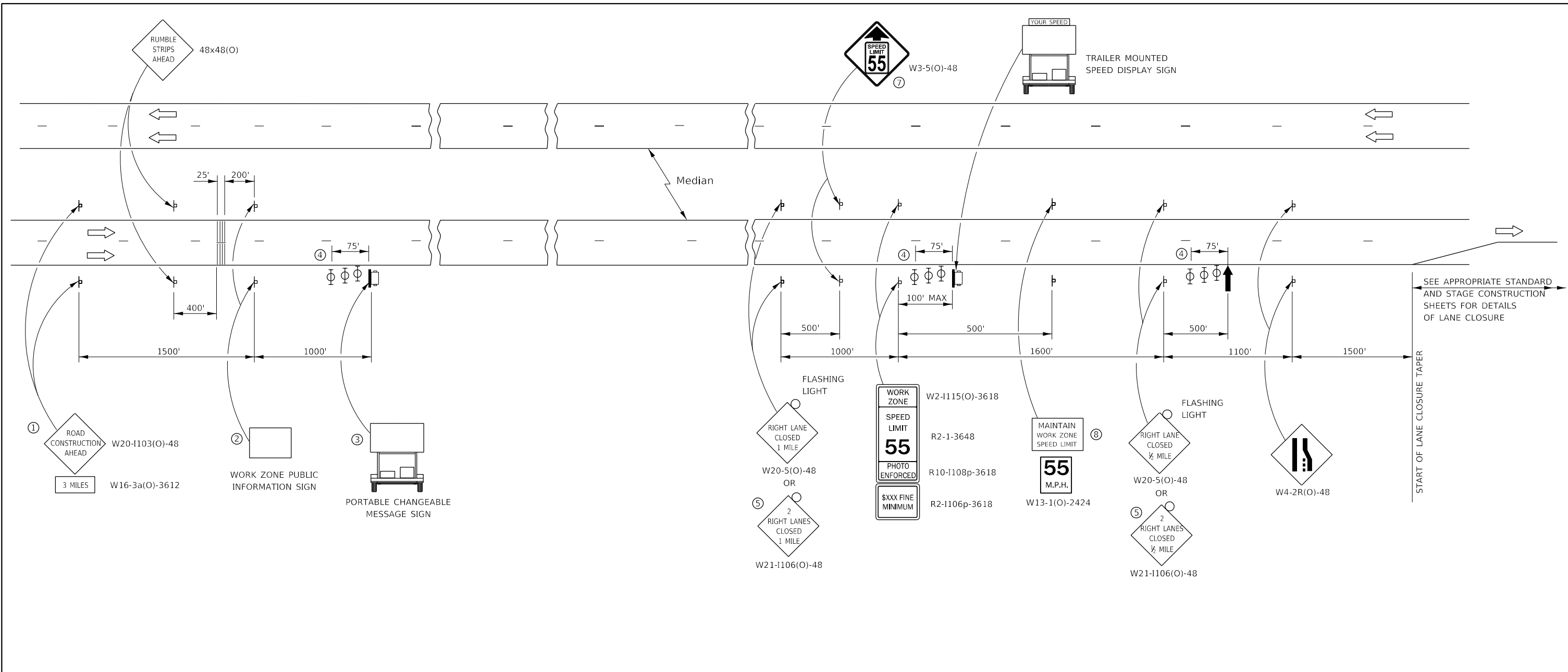


PROPOSED TYPICAL SECTION

STA 550+75 TO STA 558+90

| | | | | | | | | | | | | |
|--|------------------------------|------------|-----------|---|---|--|--|-----------------------------|-----------------|----------|--------------|-----------|
| FILE NAME = | USER NAME = budzynsklm | DESIGNED - | REVISED - | STATE OF ILLINOIS DEPARTMENT OF TRANSPORTATION | TYPICAL SECTIONS | | | F.A.I. RTE. | SECTION | COUNTY | TOTAL SHEETS | SHEET NO. |
| pw:\il084EBID\INTEG\Illnotes.gov\PWIDOT\Documents\DOT\Illinois\District 3\Projects\D366J07\CADDData\D366J07-sht-cv.dwg | DRAWN - | REVISED - | REVISED - | | | | | 57 | (46-1) SFY, CBL | KANKAKEE | 8 | 5 |
| Default | PLOT SCALE = 100.0000' / in. | CHECKED - | REVISED - | | SCALE: SHEET OF SHEETS STA. TO STA. | | | CONTRACT NO. 66J07 | | | | |
| | PLOT DATE = 2/1/2019 | DATE - | REVISED - | | | | | ILLINOIS FED. AID PROJECT | | | | |

| HIGH TENSION CABLE MEDIAN BARRIER SCHEDULE | | | | | | | | | |
|--|----|--------|-------|--------------|-----------------------------|--------------------------|---------------------------|--------------------------------------|---|
| LOCATION | | | SIDE | LENGTH | HT CBL MEDIAN BARRIER | CABLE GUARD MARKER | HT CBL MED BAR TERM | TERMINAL MARKER - POST MOUNTED | WEED CONTROL MOWING STRIP (SPECIAL) |
| STA | TO | STA | LT/RT | FOOT | FOOT | EACH | EACH | EACH | SQ YD |
| 475+60 | TO | 548+45 | LT | 7285 | 7285 | 183 | 2 | 2 | 3238 |
| STRUCTURE OMISSION | | | | | | | | | |
| 550+75 | TO | 558+90 | RT | 815 | 815 | 21 | 2 | 2 | 362 |
| CROSSOVER OMISSION | | | | | | | | | |
| 560+10 | TO | 604+00 | LT | 4390 | 4390 | 110 | 2 | 2 | 1951 |
| TOTAL | | | | 12490 | 12490 | 314 | 6 | 6 | 5551 |



- ① THE ROAD CONSTRUCTION AHEAD SIGN SHALL BE LOCATED 3 MILES IN ADVANCE OF THE PROJECT LIMITS.
- ② THE MESSAGE AND SIZE OF THE WORK ZONE PUBLIC INFORMATION SIGN SHALL BE AS SPECIFIED BY THE DEPARTMENT.
- ③ TO BE PLACED IN THE MEDIAN WHEN FEASIBLE. THE MESSAGE BOARD SHALL BE USED TO DISPLAY STATUS OF LANES WITHIN THE PROJECT. THE PRIMARY MESSAGES SHALL BE:
 "RIGHT LANE CLOSED" / " x MILES AHEAD"
 "LEFT LANE CLOSED" / " x MILES AHEAD"
 "ALL LANES OPEN"
- ④ THREE, TYPE II BARRICADES, DRUMS, OR VERTICAL BARRICADES AT 25' CENTERS.
- ⑤ THIS SIGN SHALL BE USED WHEN 2 LANES ARE CLOSED.
- ⑥ WHEN THE LEFT LANE IS CLOSED, SWITCH THESE TWO SIGNS AND THE DIRECTION OF THE MERGE ARROW.
- ⑦ THIS SIGN SHALL ONLY BE USED IF THE EXISTING SPEED LIMIT IS GREATER THAN 65 MPH.

- ⑧ 48"x36" FLUORESCENT ORANGE SIGN WITH BLACK LETTERS.
 48"
 36"

| | |
|-------------|----|
| MAINTAIN | 8" |
| WORK ZONE | 6" |
| SPEED LIMIT | 6" |
- ↑ ARROW BOARD
- ☐ PORTABLE CHANGEABLE MESSAGE SIGN
- ⊥ SIGN
- ⊕ TYPE II BARRICADE, DRUM, OR VERTICAL BARRICADE WITH MONODIRECTIONAL FLASHING LIGHT

GENERAL NOTE:

THIS STANDARD IS USED WHERE AT ANY TIME A LANE IS CLOSED ON A FREEWAY/EXPRESSWAY.

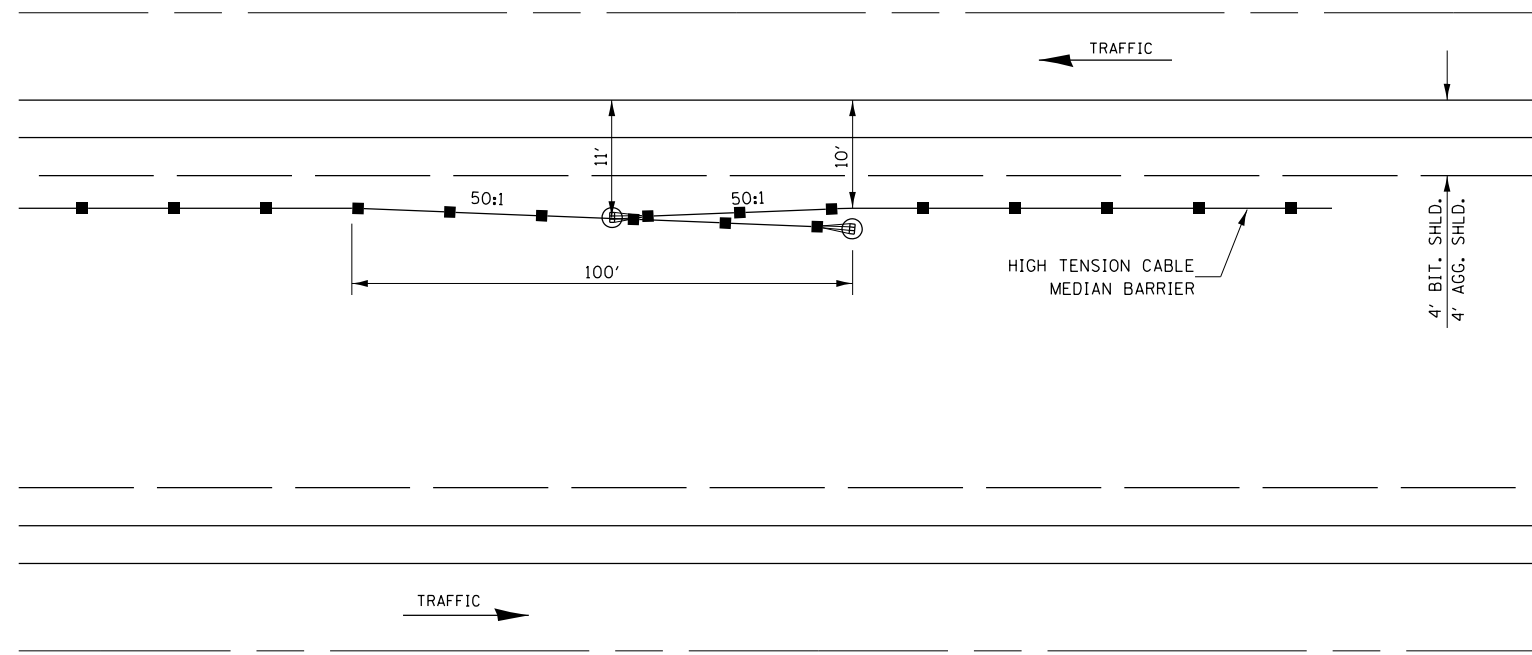
WHEN THE LEFT LANE IS CLOSED, LEFT LANE CLOSED SIGNS SHALL BE SUBSTITUTED FOR THE RIGHT LANE CLOSED SIGNS.

THE FIRST TWO SIGNS AND THE MESSAGE BOARD ARE STATIONARY. THE OTHER SIGNS AND ARROWBOARDS SHALL BE MOVED AS NECESSARY TO MAINTAIN THE REQUIRED DISTANCE FROM THE START OF THE LANE CLOSURE TAPER(S).

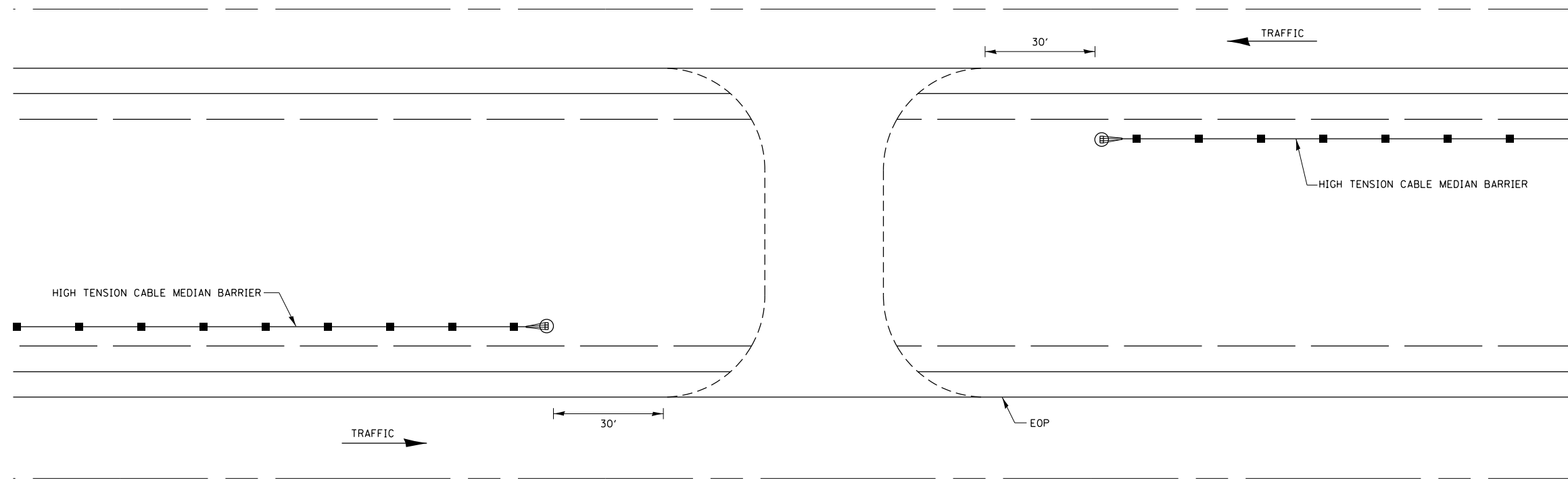
SEE SPECIAL PROVISIONS.

ALL DIMENSIONS ARE IN INCHES UNLESS OTHERWISE SHOWN.

| | | | | | | | | | | | |
|-------------|------------------------|------------|-----------|---|----------------------------------|--------------------|-----------------|----------|--------------|---------------------------|--|
| FILE NAME = | USER NAME = budzynsklm | DESIGNED - | REVISED - | STATE OF ILLINOIS DEPARTMENT OF TRANSPORTATION | STANDARD 701400 (SPECIAL) | F.A.I. RTE. | SECTION | COUNTY | TOTAL SHEETS | SHEET NO. | |
| | | DRAWN - | REVISED - | | | 57 | (46-1) SFY, CBL | KANKAKEE | 8 | 7 | |
| | | CHECKED - | REVISED - | | | CONTRACT NO. 66J07 | | | | | |
| Default | PLOT DATE = 2/1/2019 | DATE - | REVISED - | | | SCALE: | SHEET OF SHEETS | STA. | TO STA. | ILLINOIS FED. AID PROJECT | |



HIGH TENSION CABLE BARRIER OVERLAP DETAIL



MAINTENANCE CROSSOVER DETAIL

| | | | | | | | | | | | | |
|--|------------------------------|------------|-----------|---|--------------------|-------|----|-----------------|------------------|---------|--------------|-----------|
| FILE NAME = | USER NAME = budzynsklm | DESIGNED - | REVISED - | STATE OF ILLINOIS DEPARTMENT OF TRANSPORTATION | DETAILS | | | F.A.I. RTE. | SECTION | COUNTY | TOTAL SHEETS | SHEET NO. |
| pw:\il084EBID\INTEG\Illnotes.gov\PWIDOT\Documents\DOT\Office\District 3\Projects\D366J07\CADDData\D366J07-sht-cv.dwg | DRAWN - | REVISED - | 57 | | | | | (46-1) SFY, CBL | KANKAKEE | 8 | 8 | |
| Default | PLOT SCALE = 100.0000' / in. | CHECKED - | REVISED - | | CONTRACT NO. 66J07 | | | ILLINOIS | FED. AID PROJECT | | | |
| | PLOT DATE = 2/1/2019 | DATE - | REVISED - | | SCALE: | SHEET | OF | SHEETS | STA. | TO STA. | | |