

STATE OF ILLINOIS
DEPARTMENT OF TRANSPORTATION

F.A.U. RTE.	SECTION	COUNTY	TOTAL SHEETS	SHEET NO.
1281	2023 NB012 Lot	COOK	20	1
ILLINOIS CONTRACT NO. 62U87				

FOR INDEX OF SHEETS, SEE SHEET NO. 2

DESIGN DESIGNATION: MAJOR COLLECTOR
FAU ROUTE 1281: TECHN Y ROAD
2022 ADT: 7,500 VPD
SPEED LIMIT: VARIES 30-35 MPH

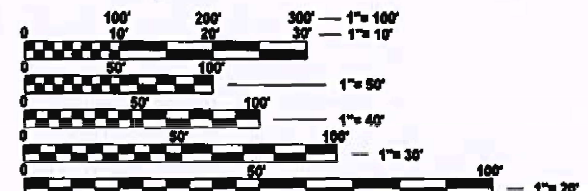
IMPROVEMENT LOCATED IN:
VILLAGE OF NORTHBROOK

NORTHBROOK MAINTENANCE YARD
1916 TECHN Y RD, NORTHBROOK

PROPOSED
HIGHWAY PLANS

FAU 1281: TECHN Y RD.
NORTHBROOK MAINTENANCE YARD
1916 TECHN Y RD, NORTHBROOK
SECTION: 2023 NB012 Lot
PARKING IMPROVEMENT
COOK COUNTY

C-91-172-23
R12E



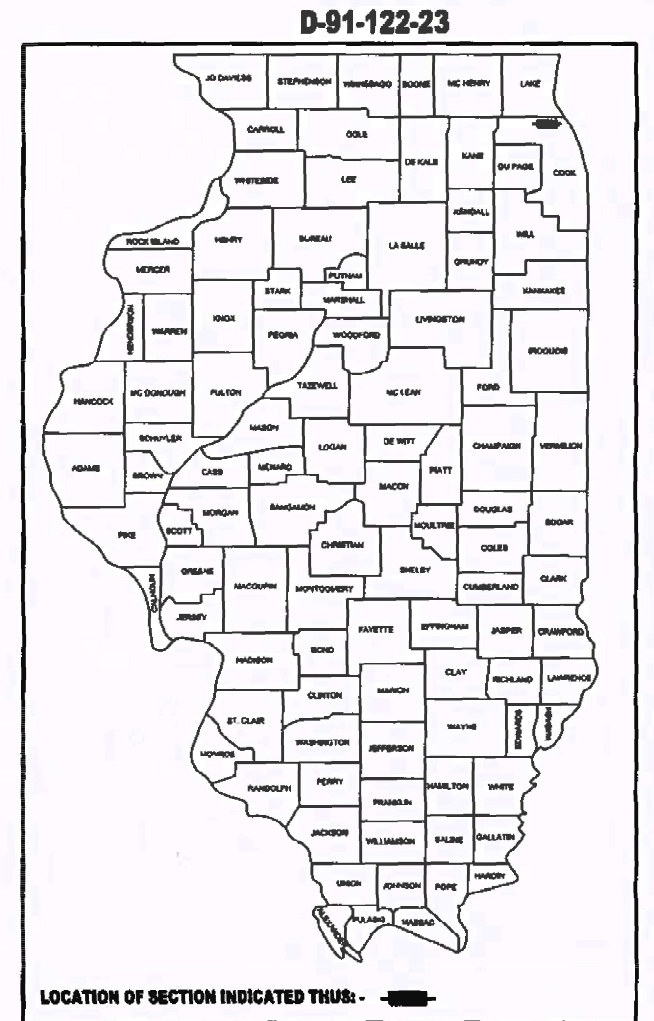
FULL SIZE PLANS HAVE BEEN PREPARED USING STANDARD ENGINEERING SCALES. REDUCED SIZED PLANS WILL NOT CONFORM TO STANDARD SCALES. IN MAKING MEASUREMENTS ON REDUCED PLANS, THE ABOVE SCALES MAY BE USED.

J.U.L.I.E.
JOINT UTILITY LOCATION INFORMATION FOR EXCAVATION
1-800-892-0123
OR 811

PROJECT ENGINEER: MR. RODRIGO LEDEZMA (847) 705-4580
PROJECT MANAGER: MR. J. ALAIN MIDY, PE, (847) 221-3056

CONTRACT NO. 62U87

LOCATION MAP
(NOT TO SCALE)
NORTHFIELD TOWNSHIP
GROSS LENGTH = N/A (SPOT IMPROVEMENT)
NET LENGTH = N/A (SPOT IMPROVEMENT)



LOCATION OF SECTION INDICATED THUS: [Symbol]



Mohammad H. Agin
DATE SIGNED: 01-31-24
EXP. DATE: 11-30-25



Signed: *Maen A. Farhat*
MAEN A. FARHAT, SE
IL Lic. No.: 081-008545
Expires: 11/30/2024

STATE OF ILLINOIS
DEPARTMENT OF TRANSPORTATION

SUBMITTED Feb 2 2024
Joseph J. Lee REGIONAL ENGINEER

March 22, 2024 *Joseph J. Lee*
ENGINEER OF DESIGN AND ENVIRONMENT

March 22, 2024 *Stephen M. Lewis*
DIRECTOR OF HIGHWAYS PROJECT IMPLEMENTATION

PRINTED BY THE AUTHORITY
OF THE STATE OF ILLINOIS

INDEX OF SHEETS

SHEET NO.	DESCRIPTION
1	COVER SHEET
2	INDEX OF SHEETS, STATE HIGHWAY STANDARDS, AND GENERAL NOTES
3-5	SUMMARY OF QUANTITIES
6	TYPICAL SECTIONS AND DETAILS
7	EXISTING SITE CONDITION AND PROPOSED REMOVAL
8	PROPOSED SITE PLAN
9	PROPOSED PAVEMENT PLAN
10	PROPOSED GRADING PLAN
11	EROSION CONTROL PLAN
12-15	STRUCTURE PLANS
16	BD-01 DRIVEWAY DETAILS - DISTANCE BETWEEN R.O.W. AND FACE OF CURB OR EDGE OF SHOULDER GREATER THAN OR EQUAL TO 15' (4.5 M)
17	BD-07 STORM SEWER CONNECTION TO EXISTING SEWER
18	BD-08 FRAMES AND LIDS ADJUSTMENT WITH MILLING
19	TC-10 TRAFFIC CONTROL AND PROTECTION FOR SIDE ROADS, INTERSECTIONS, AND DRIVEWAYS
20	PD-01 PROJECT DETAIL FOR SINGLE PERPENDICULAR CURB RAMPS

LIST OF STATE HIGHWAY STANDARDS

STANDARD NO.	TITLE
000001-08	STANDARD SYMBOLS, ABBREVIATIONS, AND PATTERNS
001006	DECIMAL OF AN INCH AND OF A FOOT
280001-07	TEMPORARY EROSION CONTROL SYSTEMS
602001-02	CATCH BASIN TYPE A
602401-07	PRECAST MANHOLE TYPE A 4' DIAMETER
604001-05	FRAME AND LIDS TYPE 1
630001-13	STEEL PLATE BEAM GUARDRAIL
630006-01	NON-BLOCKED STEEL PLATE BEAM GUARDRAIL
664001-02	CHAIN LINK FENCE
701502-09	URBAN LANE CLOSURE, 2L, 2W, WITH BIDIRECTIONAL LEFT TURN LANE
704001-08	TEMPORARY CONCRETE BARRIER

GENERAL NOTES

- ALL CONSTRUCTION SHALL BE DONE IN ACCORDANCE WITH THE STANDARD SPECIFICATIONS FOR ROAD AND BRIDGE CONSTRUCTION ADOPTED JANUARY 1, 2022 HEREIN AFTER REFERRED TO AS THE STANDARD SPECIFICATIONS, THE SUPPLEMENTAL SPECIFICATIONS AND RECURRING SPECIAL PROVISIONS ADOPTED JANUARY 1, 2024, THE LATEST EDITION OF THE ILLINOIS MANUAL ON UNIFORM TRAFFIC CONTROL DEVICES FOR STREETS AND HIGHWAYS, THE DETAILS IN THE PLANS, AND THE SPECIAL PROVISIONS INCLUDED IN THE CONTRACT DOCUMENTS.
- BEFORE STARTING ANY EXCAVATION, THE CONTRACTOR SHALL CALL "J.U.L.I.E." AT (800) 892-0123 OR 811 FOR FIELD LOCATIONS OF BURIED UTILITY FACILITIES. 48 HOUR NOTICE IS REQUIRED.
- THE CONTRACTOR SHALL COORDINATE CONSTRUCTION ACTIVITIES WITH UTILITY COMPANIES, COOK COUNTY, AND THE VILLAGE OF NORTHBROOK.
- THE CONTRACTOR WILL NOT BE ALLOWED TO SET UP A YARD OR FIELD OFFICE ON STATE PROPERTY WITHOUT WRITTEN PERMISSION FROM THE DEPARTMENT.
- IT SHALL BE THE CONTRACTOR'S RESPONSIBILITY TO VERIFY ALL DIMENSIONS AND CONDITIONS EXISTING IN THE FIELD PRIOR TO CONSTRUCTION AND ORDERING OF MATERIALS.
- FRAMES AND GRATES ADJUSTMENT OF PRIVATE UTILITIES WITHIN THE LIMITS OF THE IMPROVEMENTS SHALL BE DONE BY THEIR RESPECTIVE OWNERS AND ARE NOT PART OF THIS CONTRACT.
- THE CONTACT FOR THIS MAINTENANCE YARD IS MORGAN ROSHAN. THEY CAN BE REACHED AT ROSHAN.MORGAN@ILLINOIS.GOV
- DO NOT SCALE PLANS FOR CONSTRUCTION DIMENSIONS.
- THE CONTRACTOR SHALL BE REQUIRED TO PROVIDE ACCESS TO ABUTTING PROPERTY AT ALL TIMES DURING THE CONSTRUCTION OF THE PROJECT.
- EXISTING BROKEN FRAMES AND LIDS SHALL BE REMOVED AND DISPOSED OF BY THE CONTRACTOR AND SHALL BE REPLACED AS DIRECTED BY THE ENGINEER. REPLACEMENT FRAMES AND LIDS WILL BE PAID FOR ACCORDING TO ARTICLE 109.04 OF THE STANDARD SPECIFICATIONS, UNLESS A SEPARATE PAY ITEM HAS BEEN PROVIDED.
- THE CONTRACTOR SHALL USE CARE IN GRADING OR EXCAVATING NEAR ANY AND ALL EXISTING ITEMS THAT WILL NOT BE REMOVED INCLUDING PREVIOUSLY SEEDED AREAS. ANY DAMAGE DONE TO EXISTING ITEMS BY THE CONTRACTOR SHALL BE REPAIRED AT THE CONTRACTOR'S OWN EXPENSE TO THE SATISFACTION OF THE ENGINEER.
- ANY LOOSE MATERIAL DEPOSITED IN THE FLOW LINE OF DRAINAGE STRUCTURES WHICH OBSTRUCTS THE NATURAL FLOW OF WATER SHALL BE REMOVED AT THE CLOSE OF EACH WORKING DAY. PRIOR TO ACCEPTANCE OF THE IMPROVEMENT, ALL DRAINAGE STRUCTURES SHALL BE FREE OF DIRT AND DEBRIS. THIS WORK WILL NOT BE PAID FOR SEPARATELY, BUT SHALL BE CONSIDERED AS INCLUDED IN THE UNIT BID PRICES OF THE CONTRACT.
- CONTRACTOR SHALL VERIFY EXISTING PIPE SLOPE AND CONSTRUCT NEW PIPE SEGMENTS ACCORDINGLY. COST OF FITTINGS & ADAPTERS, AND ANY INCIDENTALS FOR COMPLETE CONSTRUCTION SHALL BE INCLUDED IN THE PRICE BID FOR OTHER ITEMS OF WORK. ALL ANNULAR SPACES IN STRUCTURES SHALL BE FILLED WITH NON-SHRINK GROUT.
- TRENCH BACKFILL UNDER PAVEMENT IN SECTION A SHALL INCLUDE SUBGRADE PREPARATION MEETING THE COMPACTION AND STABILITY REQUIREMENTS OF SECTION 301 OF STANDARD SPECIFICATIONS FOR ROAD AND BRIDGE CONSTRUCTION. COST FOR THIS WORK SHALL BE INCLUDED IN THE PRICE BID FOR TRENCH BACKFILL.
- CONTRACTOR SHALL VERIFY PIPE SIZE BEFORE ORDERING PIPE MATERIALS.
- THE SUBGRADE STABILITY SHALL BE VERIFIED BY PROOF ROLLING WITH A LOADED TANDEM-AXLE TRUCK.
- GEOTECHNICAL FABRIC FOR GROUND STABILIZATION AND/OR AGGREGATE SUBGRADE IMPROVEMENT (CU YD) HAVE BEEN PROVIDED FOR USE AT THE LOCATIONS INDICATED FOR SOILS THAT TEND TO BE UNSTABLE AND/OR UNSUITABLE. THE ACTUAL NEED FOR REMOVAL AND REPLACEMENT WITH ABOVE ITEM WILL BE DETERMINED IN THE FIELD AT THE TIME OF CONSTRUCTION BY THE GEOTECHNICAL ENGINEER. ALL POTENTIALLY UNSTABLE SOILS SHOULD BE TESTED WITH A STATIC OR DYNAMIC CONE PENETROMETER AND TREATED IN ACCORDANCE WITH ARTICLE 301.04 OF THE SSRBC AND IDOT SUBGRADE STABILITY MANUAL. IF UNSTABLE AND/OR UNSUITABLE SOILS ARE NOT ENCOUNTERED, THEN THE QUANTITY SHALL BE DEDUCTED AND NO ADDITIONAL COMPENSATION WILL BE DUE TO THE CONTRACTOR.

MODEL: Default
 FILE: M:\E:\G:\Engineering\Live\Projects\20005 IDOT DUR/WO 51 - 62U87 Northbrook Maint Yard\03 CAD\01 - Sheets\Civil\CD\Sheet\01 - 62U87 - sht.gen notes.dgn



USER NAME = akoller	DESIGNED - DC/MMA	REVISED -
	DRAWN - AK/MMA	REVISED -
PLOT SCALE = 100.0000' / in.	CHECKED - DC	REVISED -
PLOT DATE = 2/27/2024	DATE - 02/08/2024	REVISED -

STATE OF ILLINOIS
DEPARTMENT OF TRANSPORTATION

INDEX OF SHEETS, STATE HIGHWAY STANDARDS, AND GENERAL NOTES
NORTHBROOK MAINTENANCE YARD

SCALE: NONE SHEET OF SHEETS STA. TO STA.

F.A.U. RTE.	SECTION	COUNTY	TOTAL SHEETS	SHEET NO.
1281	202 NB012 LOT	COOK	20	2
				CONTRACT NO. 62U87
ILLINOIS FED. AID PROJECT				

REV-SEP

CODE NO.	ITEM	UNIT	TOTAL QUANTITY	CONSTR. CODE	
				100% STATE	
				NONE 0044	URBAN
20200100	EARTH EXCAVATION	CU YD	3099	3099	
20800150	TRENCH BACKFILL	CU YD	43	43	
21001000	GEOTECHNICAL FABRIC FOR GROUND STABILIZATION	SQ YD	622	622	
21101615	TOPSOIL FURNISH AND PLACE, 4"	SQ YD	374	374	
25200110	SODDING, SALT TOLERANT	SQ YD	374	374	
25200200	SUPPLEMENTAL WATERING	UNIT	6	6	
28000250	TEMPORARY EROSION CONTROL SEEDING	POUND	7	7	
28000400	PERIMETER EROSION BARRIER	FOOT	2585	2585	
28000510	INLET FILTERS	EACH	11	11	
28001100	TEMPORARY EROSION CONTROL BLANKET	SQ YD	303	303	
30300001	AGGREGATE SUBGRADE IMPROVEMENT	CU YD	207	207	
31101400	SUBBASE GRANULAR MATERIAL, TYPE B 6"	SQ YD	12430	12430	
40600275	BITUMINOUS MATERIALS (PRIME COAT)	POUND	27453	27453	
40600290	BITUMINOUS MATERIALS (TACK COAT)	POUND	3797	3797	

* SPECIALTY ITEMS

CODE NO.	ITEM	UNIT	TOTAL QUANTITY	CONSTR. CODE	
				100% STATE	
				NONE 0044	URBAN
40603085	HOT-MIX ASPHALT BINDER COURSE, 1L-19.0, N70	TON	2305	2305	
40604062	HOT-MIX ASPHALT SURFACE COURSE, 1L-9.5, MIX "D", N70	TON	1156	1156	
42001300	PROTECTIVE COAT	SQ YD	320	320	
42400200	PORTLAND CEMENT CONCRETE SIDEWALK 5 INCH	SQ FT	225	225	
42400800	DETECTABLE WARNINGS	SQ FT	20	20	
44000100	PAVEMENT REMOVAL	SQ YD	4210	4210	
44000164	HOT-MIX ASPHALT SURFACE REMOVAL, 3 3/4"	SQ YD	1558	1558	
44000300	CURB REMOVAL	FOOT	32	32	
44000600	SIDEWALK REMOVAL	SQ FT	225	225	
44001980	CONCRETE BARRIER REMOVAL	FOOT	97	97	
44201335	CLASS C PATCHES, TYPE IV, 8 INCH	SQ YD	288	288	
44201737	CLASS D PATCHES, TYPE I, 8 INCH	SQ YD	344	344	
44201741	CLASS D PATCHES, TYPE II, 8 INCH	SQ YD	344	344	
44201745	CLASS D PATCHES, TYPE III, 8 INCH	SQ YD	344	344	

* SPECIALTY ITEMS

MODEL: S00_1
FILE NAME: G:\Engineering\LiveProjects\2005 IDOT DUR\WO 51 - 62U87 Northbrook Maint Yard\03_CADD\01_Sheets\Civil\CB\Sheet\62U87-500.dgn



USER NAME = jschumann	DESIGNED - DC/AK/MMA	REVISED -
	DRAWN - DC/AK/MMA	REVISED -
PLOT SCALE = 100.0000' / in.	CHECKED - DC	REVISED -
PLOT DATE = 2/9/2024	DATE - 02/08/2024	REVISED -

STATE OF ILLINOIS
DEPARTMENT OF TRANSPORTATION

SUMMARY OF QUANTITIES
NORTHBROOK MAINTENANCE YARD

SCALE: NONE SHEET 1 OF 3 SHEETS STA. TO STA.

F.A.U. RTE.	SECTION	COUNTY	TOTAL SHEETS	SHEET NO.
1281	202 NB012 LOT	COOK	20	3
CONTRACT NO. 62U87			ILLINOIS FED. AID PROJECT	

REV-SEP

CONSTR. CODE
100% STATE

CODE NO.	ITEM	UNIT	TOTAL QUANTITY	CONSTR. CODE	
				NONE 0044	URBAN
44201747	CLASS D PATCHES, TYPE IV, 8 INCH	SQ YD	344	344	
50200100	STRUCTURE EXCAVATION	CU YD	86	86	
50300225	CONCRETE STRUCTURES	CU YD	1	1	
50800205	REINFORCEMENT BARS, EPOXY COATED	POUND	3440	3440	
52200900	CONCRETE STRUCTURES (RETAINING WALL)	CU YD	23	23	
550A0380	STORM SEWERS, CLASS A, TYPE 2 18"	FOOT	33	33	
55100900	STORM SEWER REMOVAL 18"	FOOT	33	33	
58600101	GRANULAR BACKFILL FOR STRUCTURES	CU YD	13	13	
58700300	CONCRETE SEALER	SQ FT	2897	2897	
59100100	GEOCOMPOSITE WALL DRAIN	SQ YD	15	15	
60200105	CATCH BASINS, TYPE A, 4'-DIAMETER, TYPE 1 FRAME, OPEN LID	EACH	1	1	
60218400	MANHOLES, TYPE A, 4'-DIAMETER, TYPE 1 FRAME, CLOSED LID	EACH	1	1	
60250200	CATCH BASINS TO BE ADJUSTED	EACH	5	5	
60250400	CATCH BASINS TO BE ADJUSTED WITH NEW TYPE 1 FRAME, OPEN LID	EACH	5	5	

* SPECIALTY ITEMS

CONSTR. CODE
100% STATE

CODE NO.	ITEM	UNIT	TOTAL QUANTITY	CONSTR. CODE	
				NONE 0044	URBAN
60252800	CATCH BASINS TO BE RECONSTRUCTED	EACH	1	1	
60255410	CATCH BASINS TO BE CLEANED	EACH	6	6	
60500105	FILLING MANHOLES	EACH	1	1	
* 63000001	STEEL PLATE BEAM GUARDRAIL, TYPE A, 6 FOOT POSTS	FOOT	46	46	
63200310	GUARDRAIL REMOVAL	FOOT	26	26	
66400305	CHAIN LINK FENCE, 6'	FOOT	674	674	
* 66900200	NON-SPECIAL WASTE DISPOSAL	CU YD	0		
* 66900530	SOIL DISPOSAL ANALYSIS	EACH	0		
* 66901001	REGULATED SUBSTANCES PRE-CONSTRUCTION PLAN	L SUM	0		
* 66901003	REGULATED SUBSTANCES FINAL CONSTRUCTION REPORT	L SUM	0		
* 66901006	REGULATED SUBSTANCES MONITORING	CAL DA	0		
67100100	MOBILIZATION	L SUM	1	1	
70102622	TRAFFIC CONTROL AND PROTECTION, STANDARD 701502	L SUM	1	1	
70400100	TEMPORARY CONCRETE BARRIER	FOOT	75	75	
70400125	PINNING TEMPORARY CONCRETE BARRIER	EACH	36	36	
* 78000100	THERMOPLASTIC PAVEMENT MARKING - LETTERS AND SYMBOLS	SQ FT	6	6	

* SPECIALTY ITEMS

MODEL: S00_2
FILE NAME: G:\Engineering\Live\Projects\20005 IDOT DUR/WO 51 - 62U87 Northbrook Maint Yard\03_CADD\01_Sheets\Civil\CB\Sheet\62U87-51-S00.dgn



USER NAME = jschumann	DESIGNED - DC/AK/MMA	REVISED -
DRAWN - DC/AK/MMA	REVISIONS -	
PLOT SCALE = 100.0000' / in.	CHECKED - DC	REVISED -
PLOT DATE = 2/9/2024	DATE - 02/08/2024	REVISED -

STATE OF ILLINOIS
DEPARTMENT OF TRANSPORTATION

SUMMARY OF QUANTITIES
NORTHBROOK MAINTENANCE YARD

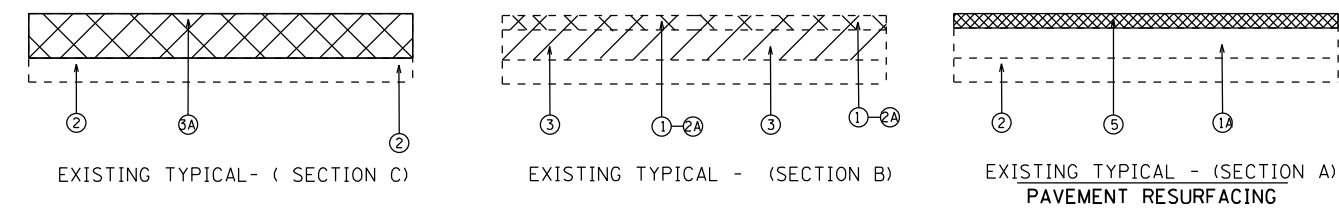
SCALE: NONE SHEET 2 OF 3 SHEETS STA. TO STA.

F.A.U. RTE. 1281	SECTION 202 NB012 LOT	COUNTY COOK	TOTAL SHEETS 20	SHEET NO. 4
			CONTRACT NO. 62U87	
ILLINOIS FED. AID PROJECT				

LEGEND

- ① EXISTING HMA PAVEMENT 4¾"±
- ①A EXISTING HMA PAVEMENT 6"±
- ② EXISTING SUBGRADE
- ②A PROPOSED PAVEMENT REMOVAL
- ③ PROPOSED SUBGRADE REMOVAL (EARTH EXCAVATION)- 6"
- ③A PROPOSED SUBGRADE REMOVAL (EARTH EXCAVATION)- 10½"
- ⑤ PROPOSED HMA SURFACE REMOVAL, ¾"
- ⑥ PROPOSED HOT-MIX ASPHALT SURFACE COURSE, IL-9.5, MIX "D", N70, 1½"
- ⑦ PROPOSED HOT-MIX ASPHALT BINDER COURSE, IL-19.0, N70, ¾"
- ⑧ PROPOSED HOT-MIX ASPHALT BINDER COURSE, IL-19.0, N70, 3"
- ⑨ PROPOSED HOT-MIX ASPHALT BINDER COURSE, IL-19.0, N70, 2¾"
- ⑩ PROPOSED SUBBASE GRANULAR MATERIAL TYPE B, 6"

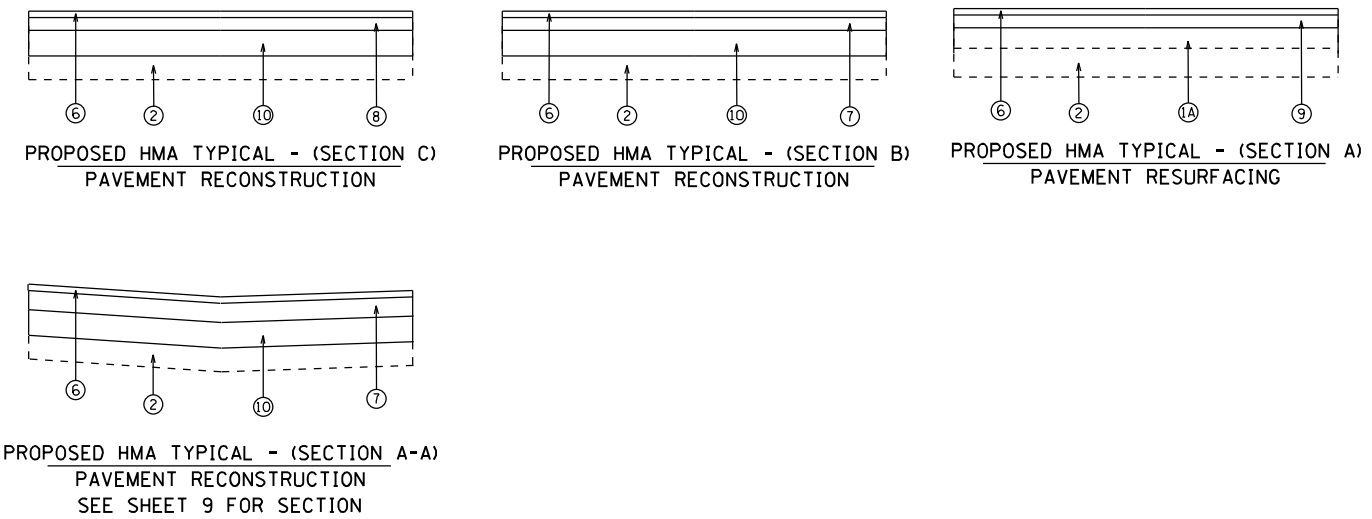
NORTHBROOK MAINTENANCE YARD



NOTES

PROPOSED HMA LOCATIONS AND PCC SECTIONS DO NOT HAVE THE SAME TOTAL DEPTH OF EXCAVATION. PLEASE BE AWARE OF ELEVATIONS WHILE EXCAVATING.

NORTHBROOK MAINTENANCE YARD



HOT-MIX ASPHALT MIXTURE REQUIREMENTS		QUALITY MANAGEMENT PROGRAM (OMP)
MIXTURE TYPE	AIR VOIDS(%) @ N _{DES.}	(OMP)
PAVEMENT RECONSTRUCTION		
HOT-MIX ASPHALT SURFACE COURSE, IL-9.5, MIX "D", N70, 1½"	4% @ 70 GYR	QC/OA
HOT-MIX ASPHALT BINDER COURSE, IL-19.0, N70, ¾"	4% @ 70 GYR	QC/OA
HOT-MIX ASPHALT BINDER COURSE, IL-19.0, N70, 3"	4% @ 70 GYR	QC/OA
PAVEMENT RESURFACING		
HOT-MIX ASPHALT SURFACE COURSE, IL-9.5, MIX "D", N70, 1½"	4% @ 70 GYR	QC/OA
HOT-MIX ASPHALT BINDER COURSE, IL-19.0, N70, 2 1/4"	4% @ 70 GYR	QC/OA
CLASS D PATCHES, TYPE I, II, III		
HOT-MIX ASPHALT BINDER COURSE, IL-19.0, N70, 8"	4% @ 70 GYR	QC/OA

OMP DESIGNATION: QUALITY CONTROL/QUALITY ASSURANCE(OA/QC); QUALITY CONTROL FOR PERFORMANCE(QCP); PAY FOR PERFORMANCE(PFP)

THE UNIT WEIGHT USED TO CALCULATE ALL HMA SURFACE MIXTURE QUANTITIES IS 112 LBS/SQ YD/IN.

THE "AC TYPE" FOR POLYMERIZED HMA MIXES SHALL BE "SBS/SBR PG 76-22" AND FOR NON-POLYMERIZED HMA THE "AC TYPE" SHALL BE "PG 64-22" UNLESS MODIFIED BY RECLAIMED MATERIALS SPECIFICATIONS.

MODEL: Typ01 (Sheet) FILE: \\mmp-gis\employee\jgall\projects\202005_IDOT_DIBR\WD 51 - 62107-Northbrook Maint. Yard\03_CADD\01_Sheets\Civil\CA05\Sheet\03-01-2024-01.dwg



USER NAME = jdavis	DESIGNED - MMA	REVISED -
DRAWN - MMA	DRAWN - MMA	REVISED -
PLOT SCALE = 0.200000' / in.	CHECKED - DC	REVISED -
PLOT DATE = 2/9/2024	DATE - 02/08/2024	REVISED -

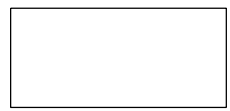
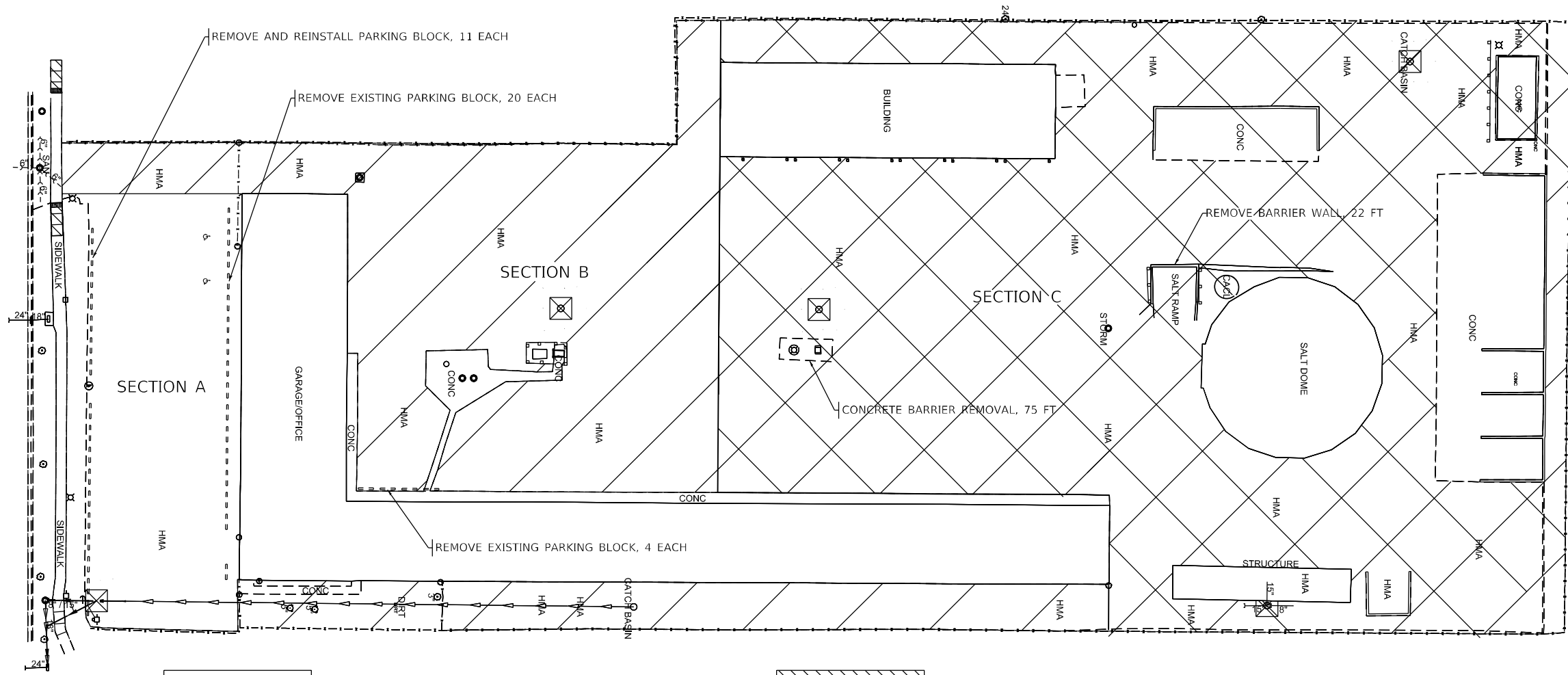
**STATE OF ILLINOIS
DEPARTMENT OF TRANSPORTATION**

TYPICAL SECTIONS AND DETAILS NORTHBROOK MAINTENANCE YARD	
SCALE: NONE	SHEET 1 OF 1 SHEETS STA. TO STA.

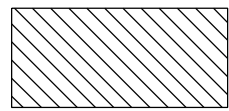
F.A.U. RTE.	SECTION	COUNTY	TOTAL SHEETS	SHEET NO.
1201	202 NB012 LOT	COOK	20	6
CONTRACT NO. 62U87			ILLINOIS FED. AID PROJECT	



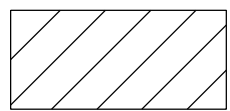
TECHNY RD.



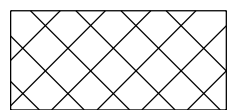
SECTION A
PROP. HMA SURFACE REMOVAL - 3 3/4"



SIDEWALK REMOVAL



SECTION B
PROP. PAVEMENT REMOVAL - 4 3/4"±
EARTH EXCAVATION & DEPTH - 6"



SECTION C
PROP. EARTH EXCAVATION & DEPTH - 10 1/2"



MODEL: D:\m\l... FILE: M:\m\l... 62187-Northbrook-Maint-Yard\03_CADD\01_Sheets\Civil\CONCRETE\62187-salt-removal.dwg



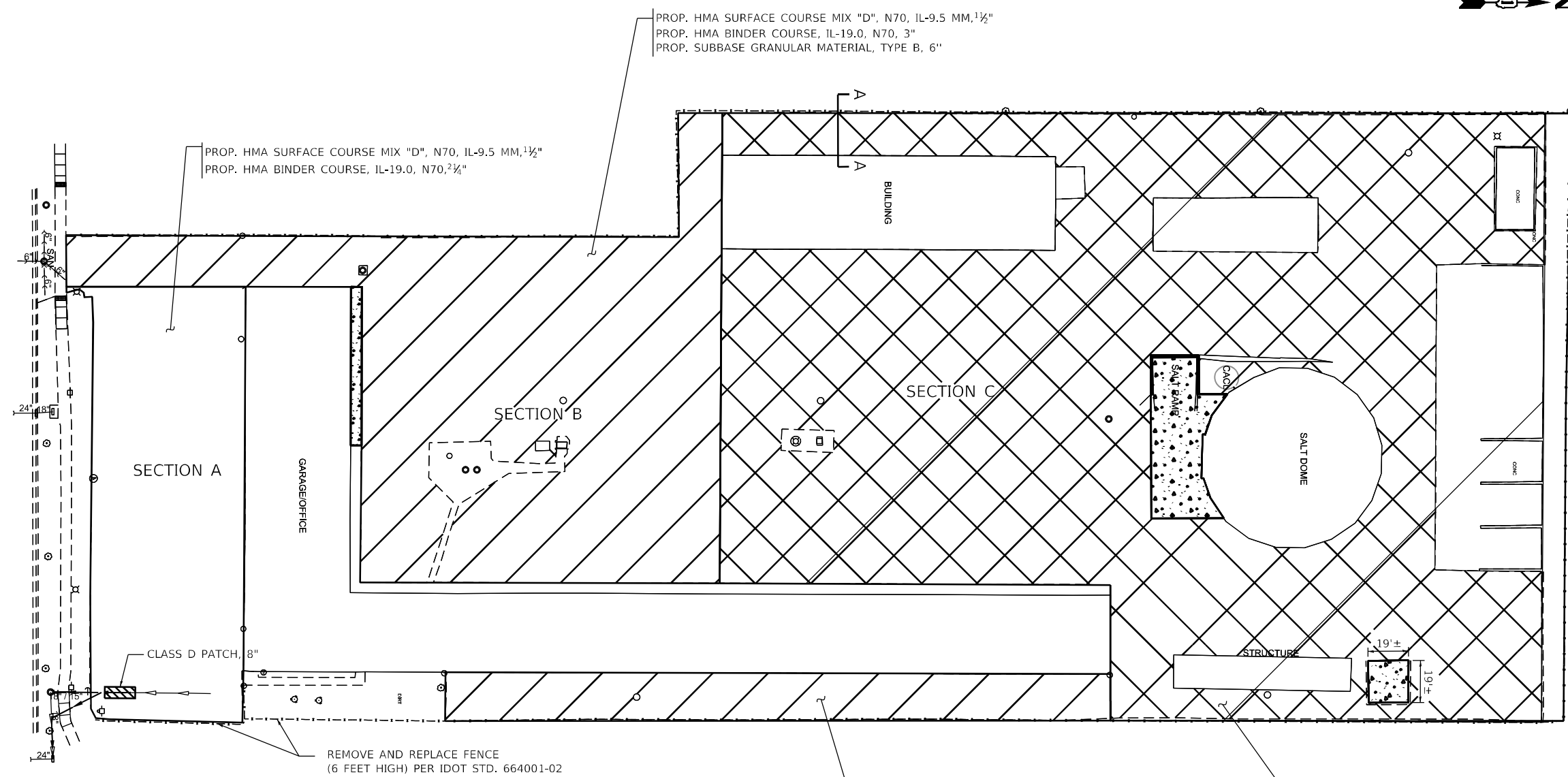
USER NAME = jdavis	DESIGNED - MMA	REVISED -
	DRAWN - MMA	REVISED -
PLOT SCALE = 60,0000 ' / in.	CHECKED - DC	REVISED -
PLOT DATE = 2/28/2024	DATE - 02/08/2024	REVISED -

STATE OF ILLINOIS
DEPARTMENT OF TRANSPORTATION

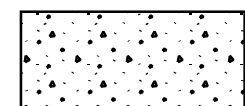
EXISTING SITE CONDITION AND PROPOSED REMOVAL
NORTHBROOK MAINTENANCE YARD

SCALE: 1"=30' SHEET 1 OF 5 SHEETS STA. TO STA.

F.A.U. RTE.	SECTION	COUNTY	TOTAL SHEETS	SHEET NO.
1281	202 NB012 LOT	COOK	20	7
CONTRACT NO. 62U87			ILLINOIS FED. AID PROJECT	



SECTION A
PROP. HMA PAVEMENT RESURFACING



CLASS C PATCHES, TYPE IV, 8 INCH



SECTION B
PROP. HMA PAVEMENT RECONSTRUCTION



SECTION C
PROP. HMA PAVEMENT RECONSTRUCTION

PROP. HMA SURFACE COURSE MIX "D", N70, IL-9.5 MM, 1 1/2"
PROP. HMA BINDER COURSE, IL-19.0, N70, 3"
PROP. SUBBASE GRANULAR MATERIAL, TYPE B, 6"

PROP. HMA SURFACE COURSE MIX "D", N70, IL-9.5 MM, 1 1/2"
PROP. HMA BINDER COURSE, IL-19.0, N70, 3"
PROP. SUBBASE GRANULAR MATERIAL, TYPE B, 6"



MODEL: PAVEMENT
FILE NAME: G:\Engineering\10\100706\100706-0005_IDOT_DIBR\10051 - 62187_Northbrook_Maint_Yard\1003_CADD\10_Sheets\Civil\CA08\Sheet\100706-0005-02187-salt.dwg
DATE: 02/08/2024



USER NAME = malkufahy	DESIGNED - MMA	REVISED -
	DRAWN - MMA	REVISED -
PLOT SCALE = 60,0000 ' / in.	CHECKED - DC	REVISED -
PLOT DATE = 2/8/2024	DATE - 02/08/2024	REVISED -

**STATE OF ILLINOIS
DEPARTMENT OF TRANSPORTATION**

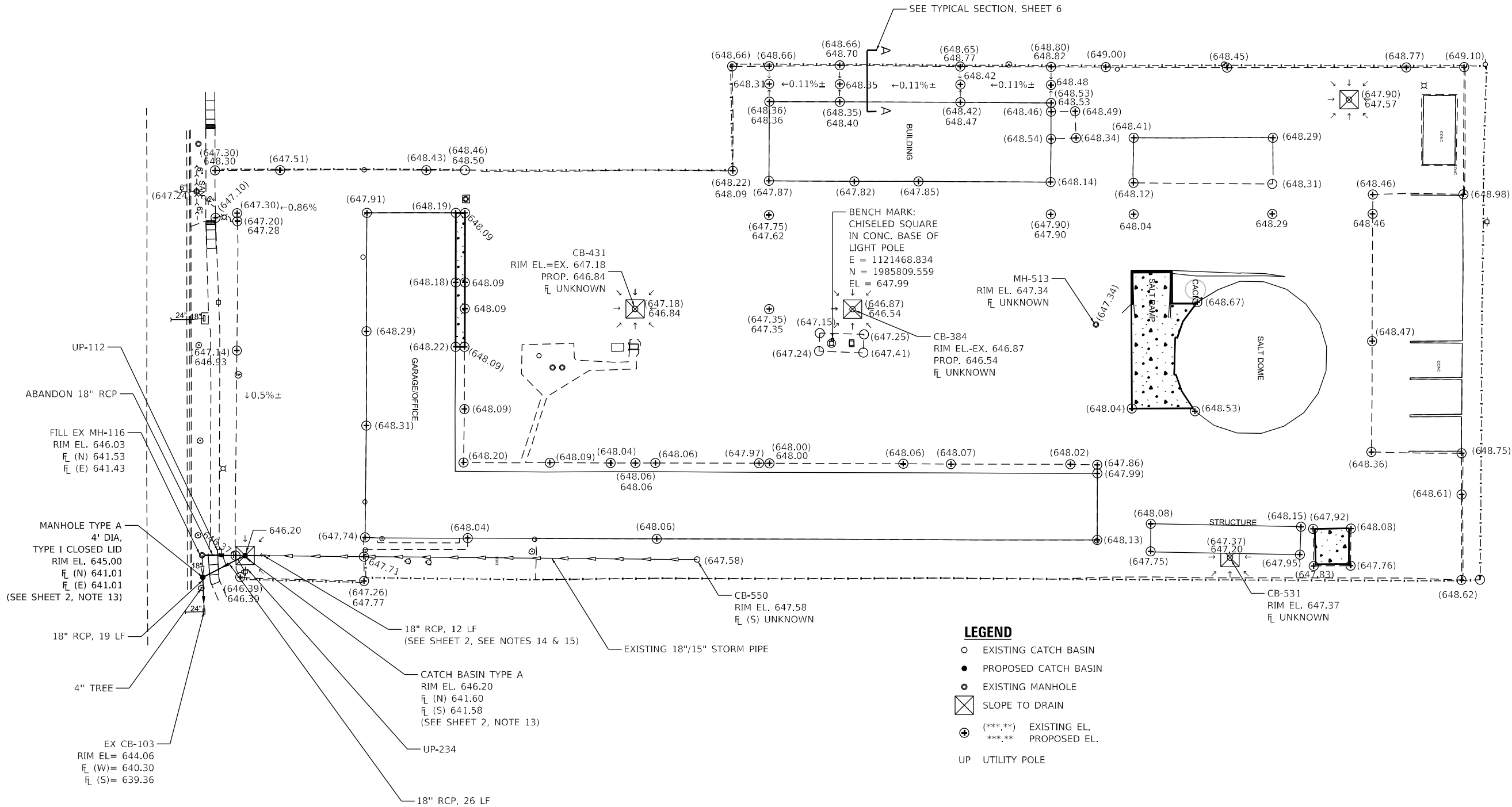
**PROPOSED PAVEMENT PLAN
NORTHBROOK MAINTENANCE YARD**

SCALE: 1"=30' SHEET 3 OF 5 SHEETS STA. TO STA.

F.A.U. RTE.	SECTION	COUNTY	TOTAL SHEETS	SHEET NO.
1281	202 NB012 LOT	COOK	20	9
CONTRACT NO. 62U87				
ILLINOIS FED. AID PROJECT				



SEE TYPICAL SECTION, SHEET 6



LEGEND

- EXISTING CATCH BASIN
- PROPOSED CATCH BASIN
- EXISTING MANHOLE
- ⊗ SLOPE TO DRAIN
- ⊕ (***) EXISTING EL.
- ⊕ (***) PROPOSED EL.
- UP UTILITY POLE



MODEL: D:\MANAGE_G\GRADING
FILE: M:\E:\C:\Users\m\Documents\622805_IDOT_DIBR\WD 51 - 62187_Northbrook Maint. Yard\03_CADD\01_Sheets\Civil\CB\Sheet\622805-salt.dwg



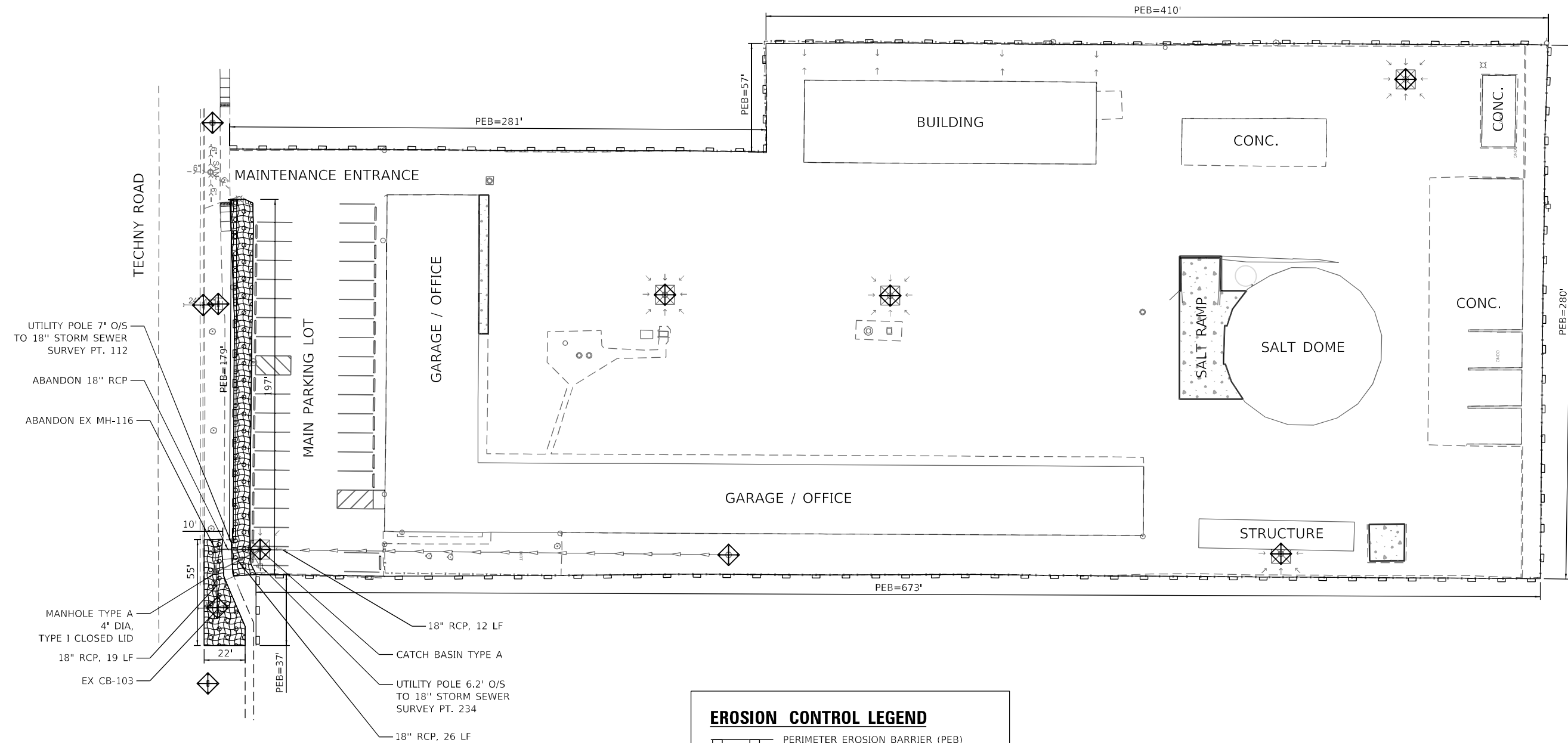
USER NAME = malkafahy	DESIGNED - MMA	REVISED -
DRAWN - MMA	REVISED -	
PLOT SCALE = 60,0000 ' / in.	CHECKED - DC	REVISED -
PLOT DATE = 2/8/2024	DATE - 02/08/2024	REVISED -

**STATE OF ILLINOIS
DEPARTMENT OF TRANSPORTATION**

**PROPOSED GRADING PLAN
NORTHBROOK MAINTENANCE YARD**

SCALE: 1"=30' SHEET 4 OF 5 SHEETS STA. TO STA.

F.A.U. RTE.	SECTION	COUNTY	TOTAL SHEETS	SHEET NO.
1281	202 NB012 LOT	COOK	20	10
CONTRACT NO. 62U87				
ILLINOIS FED. AID PROJECT				



EROSION CONTROL LEGEND

- PERIMETER EROSION BARRIER (PEB)
- INLET FILTERS
- TEMPORARY EROSION CONTROL BLANKET
- TEMPORARY EROSION CONTROL SEEDING

MODEL: D:\a\l\ Accurate Group, Inc. \Projects\621087 - Northbrook Maint. Yard\03 - CAD\03 - Sheets\Civil\CD\Sheet\621087-ctrl-ers.dwg
 FILE: 621087 - Northbrook Maint. Yard\03 - CAD\03 - Sheets\Civil\CD\Sheet\621087-ctrl-ers.dwg



USER NAME = malkufahy	DESIGNED - JS	REVISED -
DRAWN - JS	REVISED -	
PLOT SCALE = 60,0000 ' / in.	CHECKED - DC	REVISED -
PLOT DATE = 2/8/2024	DATE - 02/08/2024	REVISED -

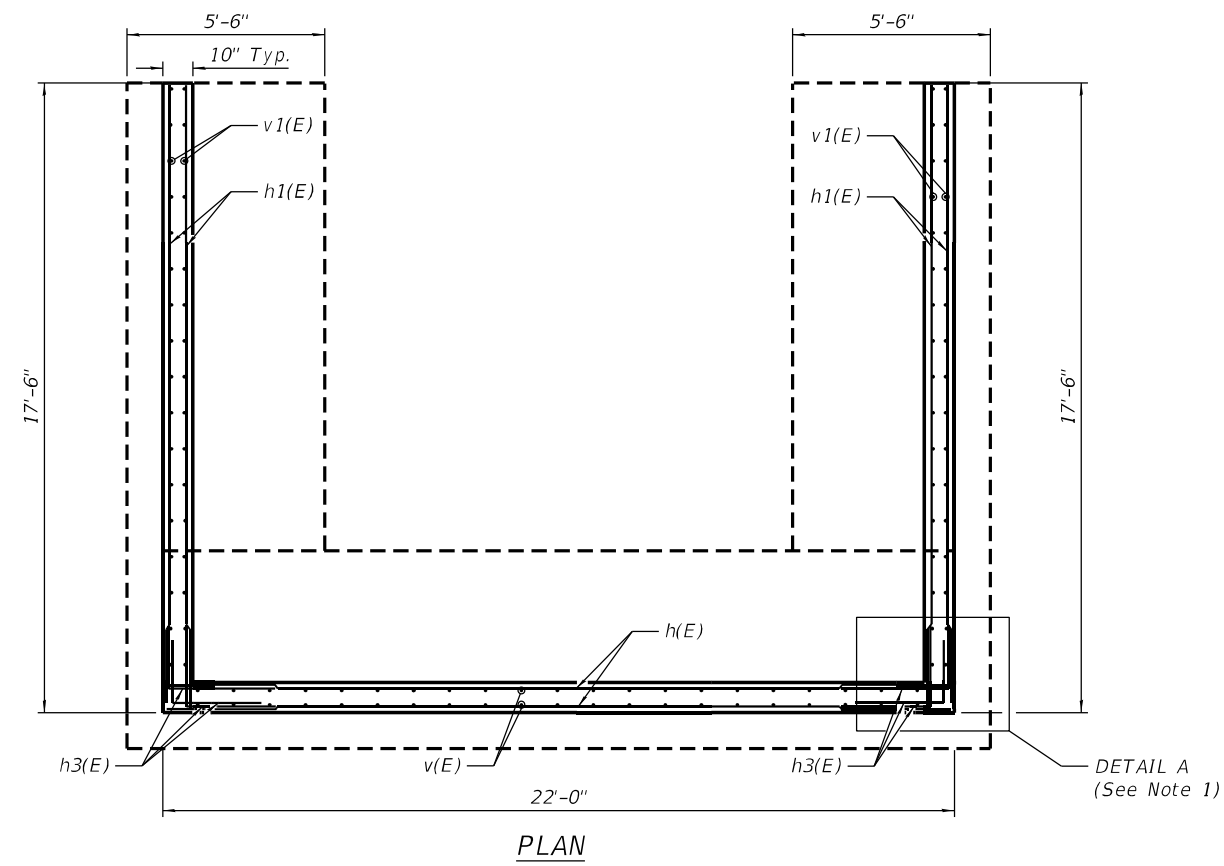
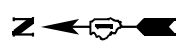
STATE OF ILLINOIS
DEPARTMENT OF TRANSPORTATION

EROSION CONTROL PLAN
NORTHBROOK MAINTENANCE YARD

SCALE: 1"=30' SHEET 5 OF 5 SHEETS STA. TO STA.

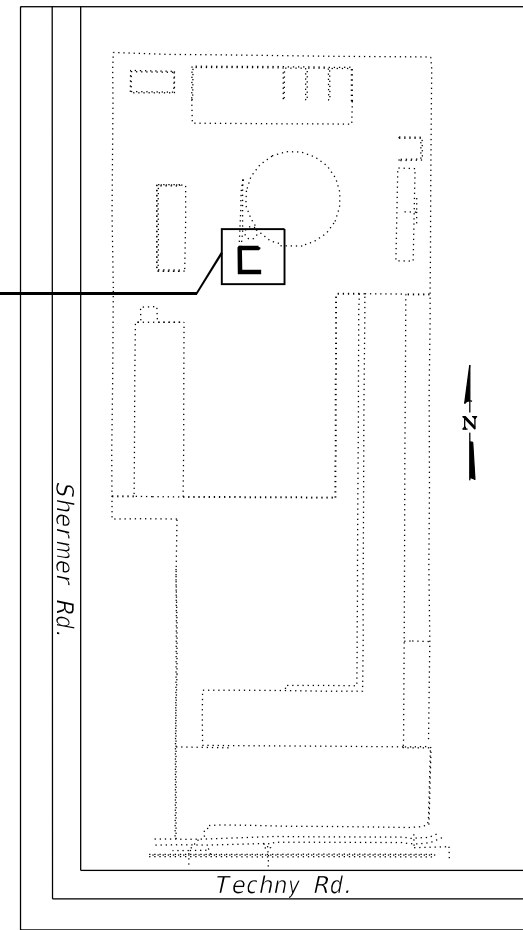
F.A.U. RTE.	SECTION	COUNTY	TOTAL SHEETS	SHEET NO.
1281	202 NB012 LOT	COOK	20	11
CONTRACT NO. 62U87				
ILLINOIS FED. AID PROJECT				

MODEL: Q:\Engineering\LiveProjects\20005_IDOT DURWO 51 - 62U87 Northbrook Maint. Yarn03_CADD\01_Sheets\Structural\SH 10_62U87_Detailed Plan and Elevation (Retaining Wall).dgn
 FILE NAME:



PLAN

Proposed Retaining Wall Location



KEY PLAN

DESIGN SPECIFICATIONS

AASHTO LRFD Bridge Design Specifications 9th Edition, 2020

DESIGN STRESSES

$f_c = 4000 \text{ psi}$

5-#4 h1(E) bars at 12" Max. cts E.F. both side fan to fit

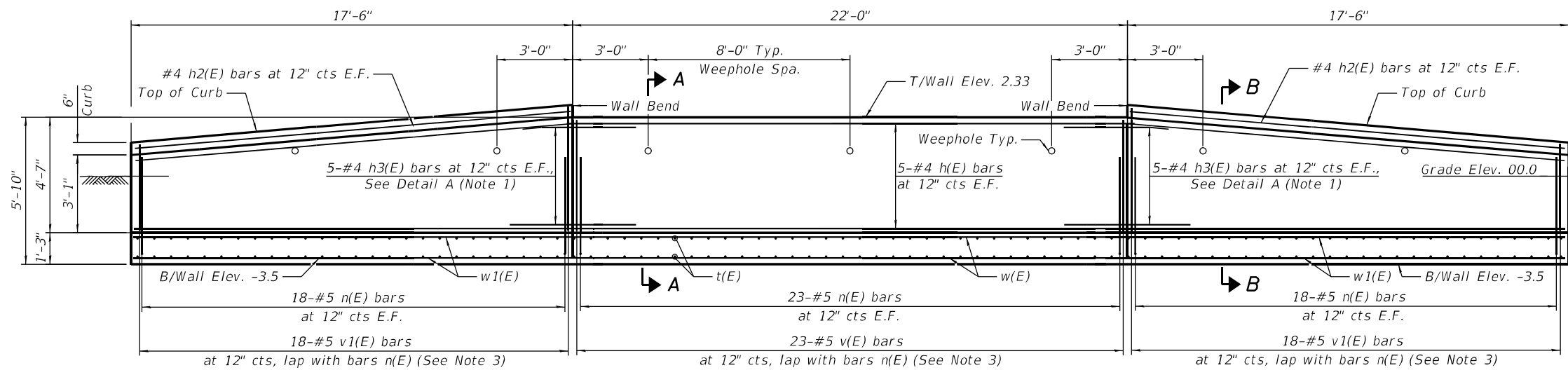
SCOPE OF WORK

1. Remove existing structure.
2. Construct a proposed retaining wall shown on plans.
3. Remove and replace existing Guardrail. For Guardrail replacement see roadway plans.

NOTES:

1. See sheet S-11 for Sections AA, BB, Foundation plan, and Detail A.
2. Order v1(E) bars full length, cut in the field and use remaining bars on opposite face.

* Bend top h3(E) bars in field to fit.



DEVELOPED ELEVATION



USER NAME =	DESIGNED - RH	REVISED -
	CHECKED - MAF	REVISED -
PLOT SCALE =	DRAWN - RH	REVISED -
PLOT DATE =	CHECKED - MAF	REVISED -

**STATE OF ILLINOIS
DEPARTMENT OF TRANSPORTATION**

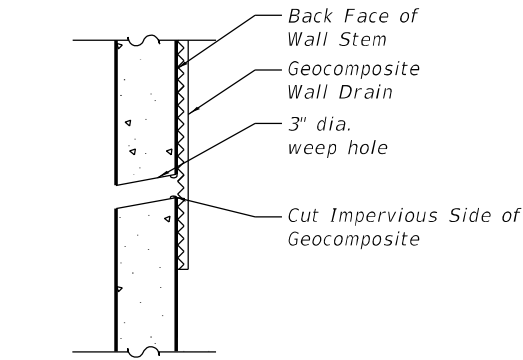
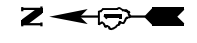
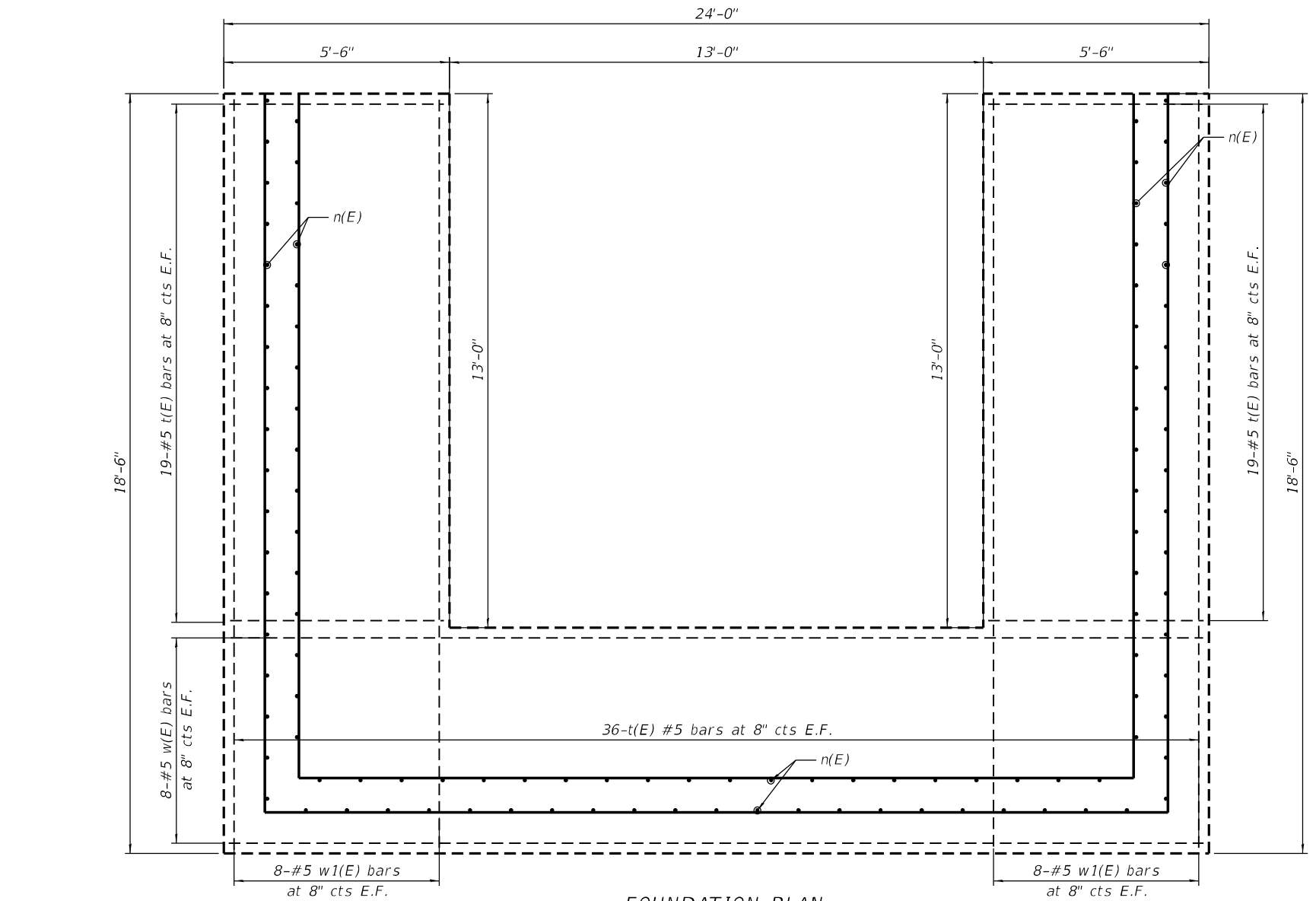
DETAILED PLAN AND ELEVATION (RETAINING WALL)

SHEET 1 OF 2 SHEETS

F.A.P. RTE.	SECTION	COUNTY	TOTAL SHEETS	SHEET NO.
1281	202 NB012 LOT	COOK	20	12
CONTRACT NO. 62U87				
ILLINOIS FED. AID PROJECT				

Default: Q:\Engineering\LiveProjects\20005_IDOT DURWO 51 - 62U87 Northbrook Maint Yarr03_CADD\01_Sheets\Structural\SH11_62U87_Details Retaining wall.dgn

MODEL: FILE NAME:



WEEPHOLE DRAIN
DETAIL B

BILL OF MATERIAL				
Bar	No.	Size	Length	Shape
h(E)	10	#4	22'-10"	—
h1(E)	20	#4	17'-1"	—
h2(E)	4	#4	17'-2"	—
h3(E)	30	#4	6'-4"	└
v(E)	46	#5	4'-2"	—
v1(E)	36	#5	8'-4"	—
n(E)	118	#5	4'-1"	└
t(E)	148	#5	5'-1"	—
w(E)	16	#5	23'-8"	—
w1(E)	32	#5	18'-1"	—
Structure Excavation			Cu. Yd.	86
Reinforcement Bars, Epoxy Coated			Pound	3400
Concrete Structures (Retaining Wall)			Cu. Yd.	23
Granular Backfill for Structures			Cu. Yd.	13
Concrete Sealer			Sq. Ft.	196
Geocomposite Wall Drain			Sq. Yd.	15

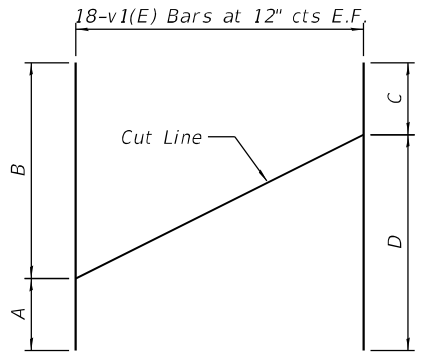
NOTES:

1. Reinforcement bars, including epoxy-coated reinforcement bars, shall conform to the requirement of AASHTO M-31 (ASTM A706), Grade 60, deformed bars.
2. Cover from the face of concrete to face of reinforcement bars shall be 3" for surfaces formed.
3. Reinforcement bars designated "(E)" shall be epoxy coated.
4. Elevation at the existing ground level was assumed zero for proposed wall, contractor shall V.I.F. All elevations prior to pouring concrete.
5. Class BS concrete shall be used for Concrete Structures (Retaining Wall).
6. For Proposed slab see Roadway plans.

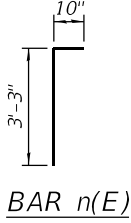
FOUNDATION PLAN

REINFORCEMENT TABLE

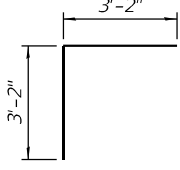
Bar	A	B	C	D
v1(E)	3'-5"	4'-11"	3'-5"	4'-11"



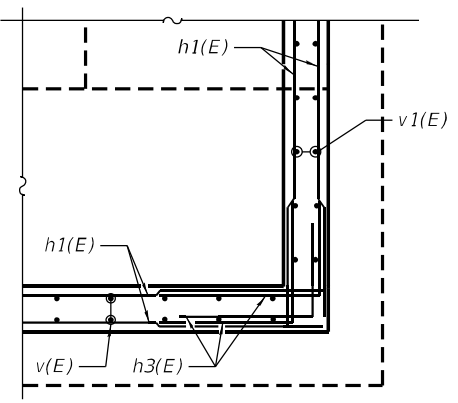
FIELD CUTTING DIAGRAM
Order bars shown full length. Cut as shown and use remainder of bars in opposite face



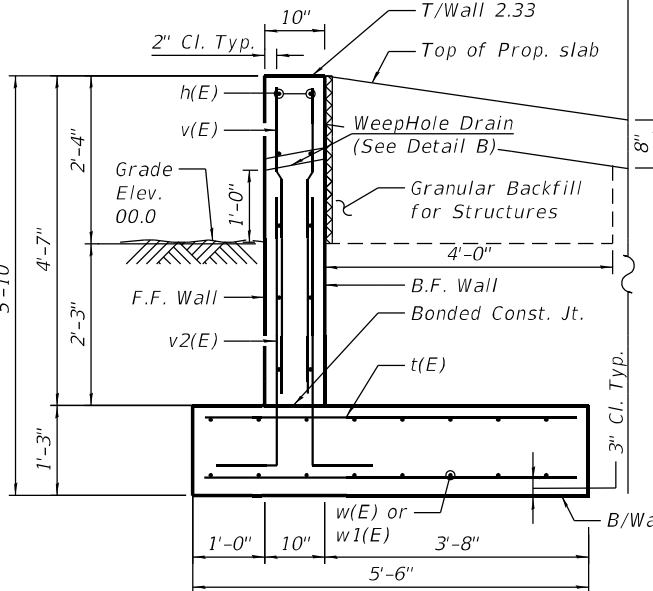
BAR n(E)



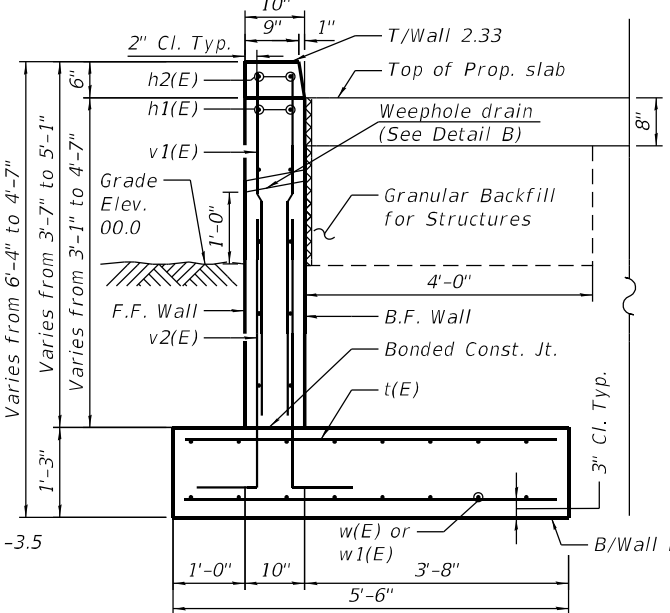
BAR h3(E)



DETAIL A-A



SECTION A-A



SECTION B-B



USER NAME =	DESIGNED - RH	REVISED -
CHECKED - MAF	REVISOR -	
PLOT SCALE =	DRAWN - RH	REVISED -
PLOT DATE =	CHECKED - MAF	REVISED -

STATE OF ILLINOIS
DEPARTMENT OF TRANSPORTATION

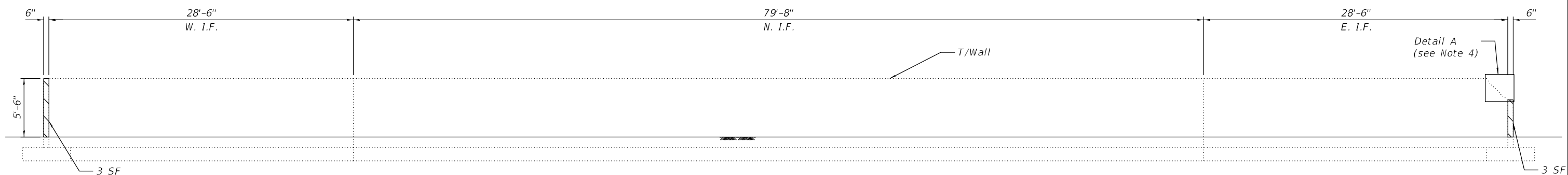
FOUNDATION PLAN AND DETAILS

SHEET 2 OF 2 SHEETS

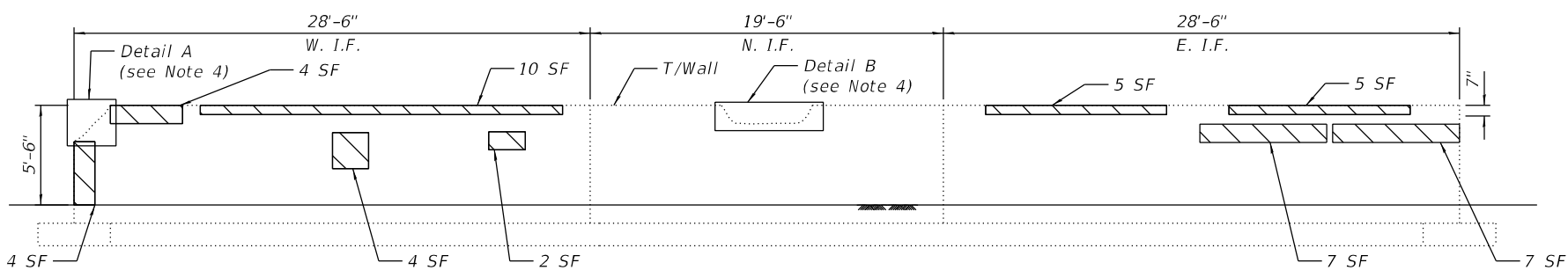
F.A.P. RTE.	SECTION	COUNTY	TOTAL SHEETS	SHEET NO.
1281	202 NB012 LOT	COOK	20	13
CONTRACT NO. 62U87				

ILLINOIS FED. AID PROJECT

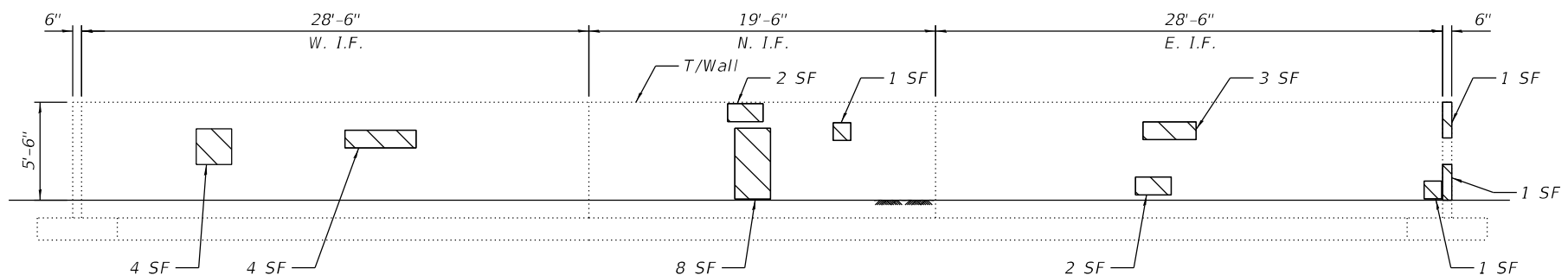
MODEL: Q:\Engineering\LiveProjects\20005_IDOT DURWO 51 - 62U87 Northbrook Maint Yarr03_CADD\01_Sheets\Structural\SH 12-62U87-Retaining Wall Repairs (Sheet 1 of 2).dgn
 FILE NAME:



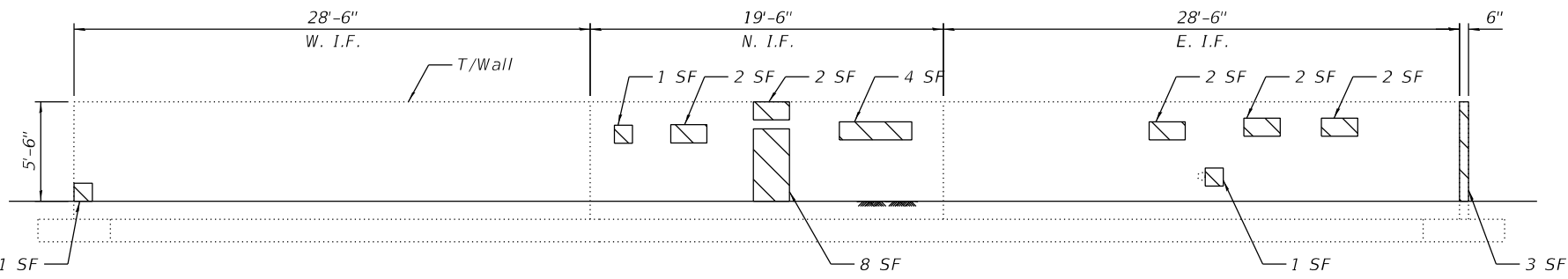
DEVELOPED ELEVATION (BAY 1)
(Looking North)



DEVELOPED ELEVATION (BAY 2)
(Looking North)



DEVELOPED ELEVATION (BAY 3)
(Looking North)



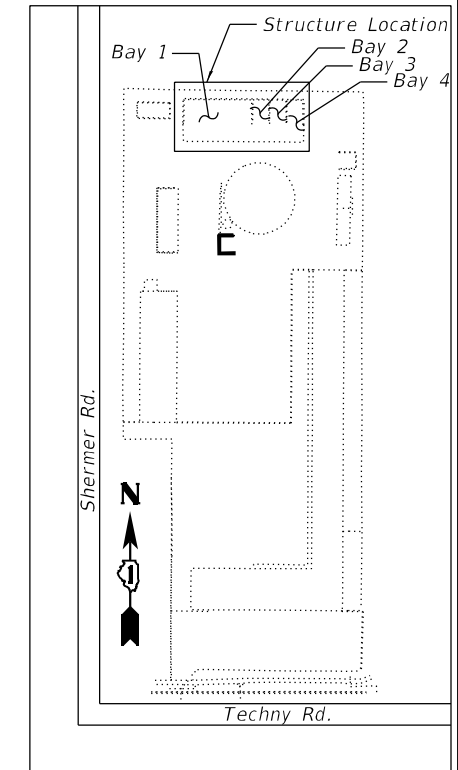
DEVELOPED ELEVATION (BAY 4)
(Looking North)

LEGEND

- Structural Repair of Concrete (Depth Equal to or Less than 5 Inches)
- Epoxy Crack Injection
- SF Square Foot
- LF Linear Foot
- I.F. Inside Face

NOTES

1. Quantities and limits shown are estimated for bidding purpose only. The actual areas to be repaired and the type(s) of repairs to be used will be determined by the engineer in the field at the time of construction.
2. Dimensions Shown are Approximate. Contractor shall Verify in the Field the Actual Dimensions.
3. Concrete Sealer is to be applied to the Inside & Outside Faces, Front Edges and Top Faces of Existing Wall.
4. For Details A and B, see sheet 13 of 18.
5. The Inside Face of Bay1 was Inaccessible for Inspection. Contractor shall verify in the field all applicable repairs and provide to the Engineer for Approval.



KEY PLAN

BILL OF MATERIAL

Bar	No.	Size	Length	Shape
h6(E)	3	#4	9'-0"	—
h7(E)	4	#4	8'-0"	—
h8(E)	2	#4	12'-0"	—
v4(E)	3	#4	9'-0"	—
v5(E)	6	#4	15'-0"	—
Concrete Structures			Cu. Yd.	1.0
Reinforcement Bars, Epoxy Coated			Pound	40
Concrete Sealer			Sq. Ft.	3521
Structural Repair of Concrete (Depth Equal to or Less than 5 Inches)			Sq. Ft.	116



USER NAME =	DESIGNED - AE	REVISED -
PLOT SCALE =	CHECKED - MAF	REVISED -
PLOT DATE =	DRAWN - AE	REVISED -
	CHECKED - MAF	REVISED -

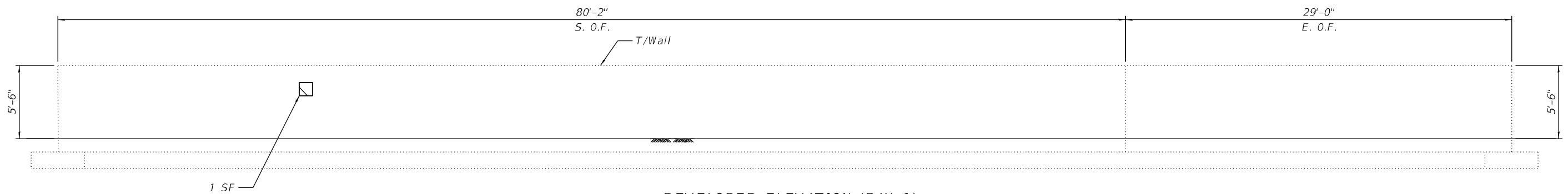
**STATE OF ILLINOIS
DEPARTMENT OF TRANSPORTATION**

**EXISTING RETAINING WALL REPAIR (SHEET 1 OF 2)
(SHEET 1 OF 2)**

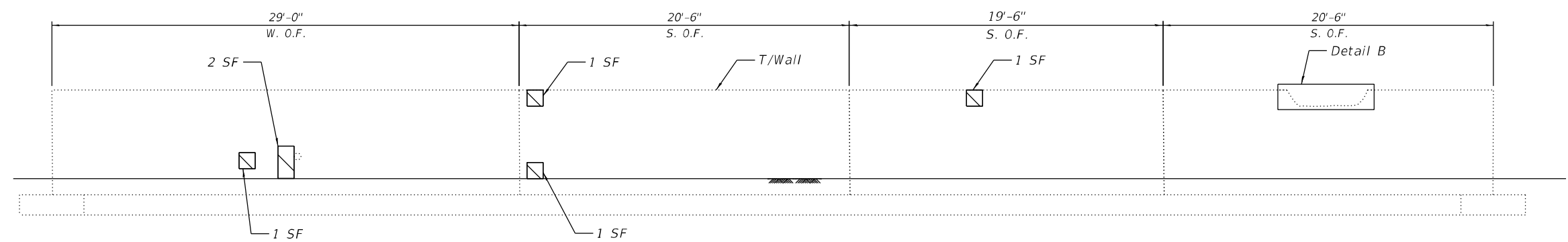
SHEET 1 OF 2 SHEETS

F.A.P. RTE.	SECTION	COUNTY	TOTAL SHEETS	SHEET NO.
1281	202 NB012 LOT	COOK	20	14
CONTRACT NO. 62U87				
ILLINOIS		FED. AID PROJECT		

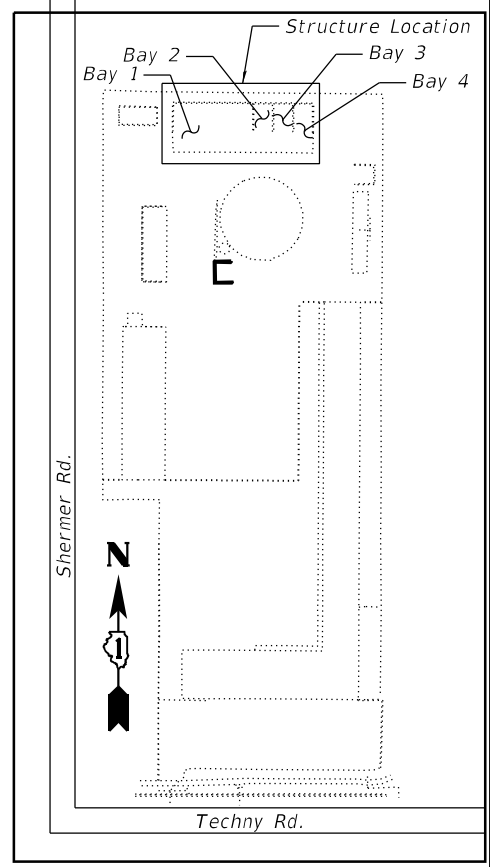
MODEL: Q:\Engineering\LiveProjects\20005_IDOT DURWO 51 - 62U87 Northbrook Maint_Yarri03_CADD\01_Sheets\Structural\SH 13-62U87-Retaining Wall Repairs (Sheet 2 of 2).dgn
 FILE NAME:



DEVELOPED ELEVATION (BAY 1)
(Looking South at O.F. of Wall)



DEVELOPED ELEVATION (BAY 2,3&4)
(Looking South at O.F. of Wall)



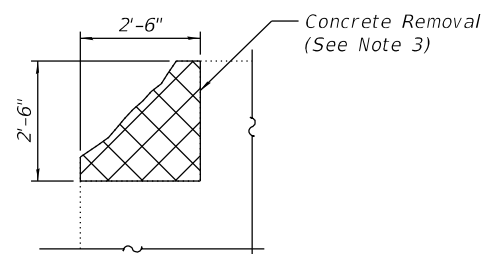
KEY PLAN

LEGEND

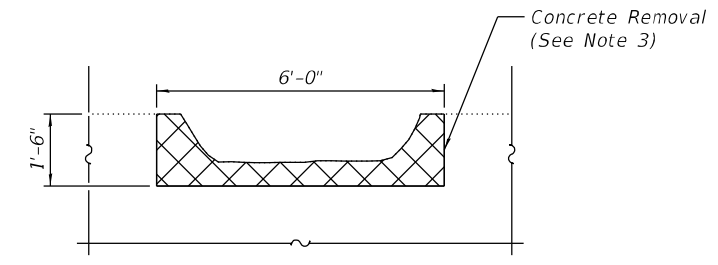
- Concrete Removal (See Note 3)
- Structural Repair of Concrete (Depth Equal to or Less than 5 Inches)
- Epoxy Crack Injection
- SF Square Foot
- LF Linear Foot
- O.F. Outside Face

NOTES

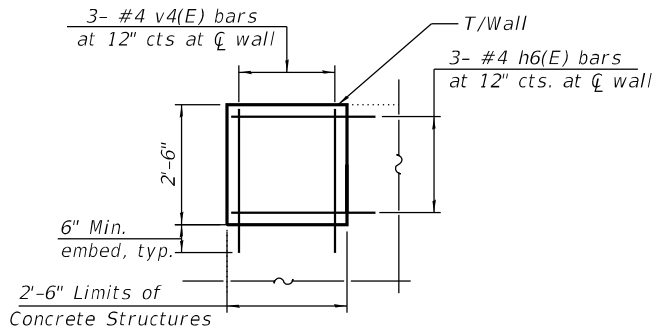
1. Quantities and limits shown are estimated for bidding purpose only. The actual areas to be repaired and the type(s) of repairs to be used will be determined by the engineer in the field at the time of construction.
2. Dimensions Shown are Approximate. Contractor shall Verify in the Field the Actual Dimensions.
3. Concrete Sealer is to be applied to the Inside Faces, Front Edges and Top Faces.
4. Epoxy grout h6(E), h7(E), v4(E), and v5(E) bars according to Article 584 of the Standard Specifications. Drill to miss existing reinforcement. Cost included with Concrete Structures.



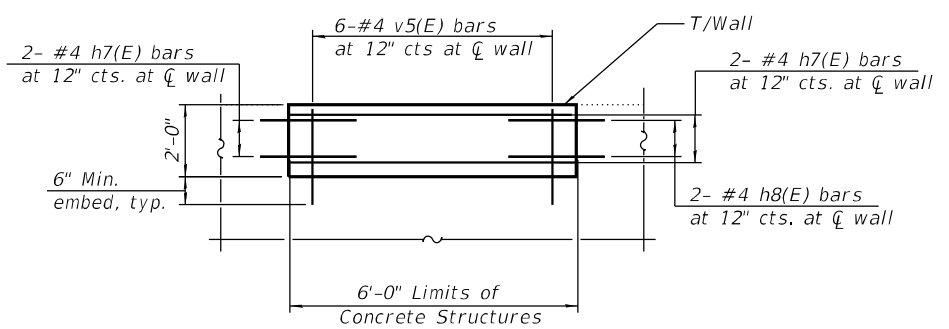
DETAIL A: REMOVAL



DETAIL B: REMOVAL



DETAIL A: CONSTRUCTION



DETAIL B: CONSTRUCTION



USER NAME =	DESIGNED - AE	REVISED -
	CHECKED - MAF	REVISED -
PLOT SCALE =	DRAWN - AE	REVISED -
PLOT DATE =	CHECKED - MAF	REVISED -

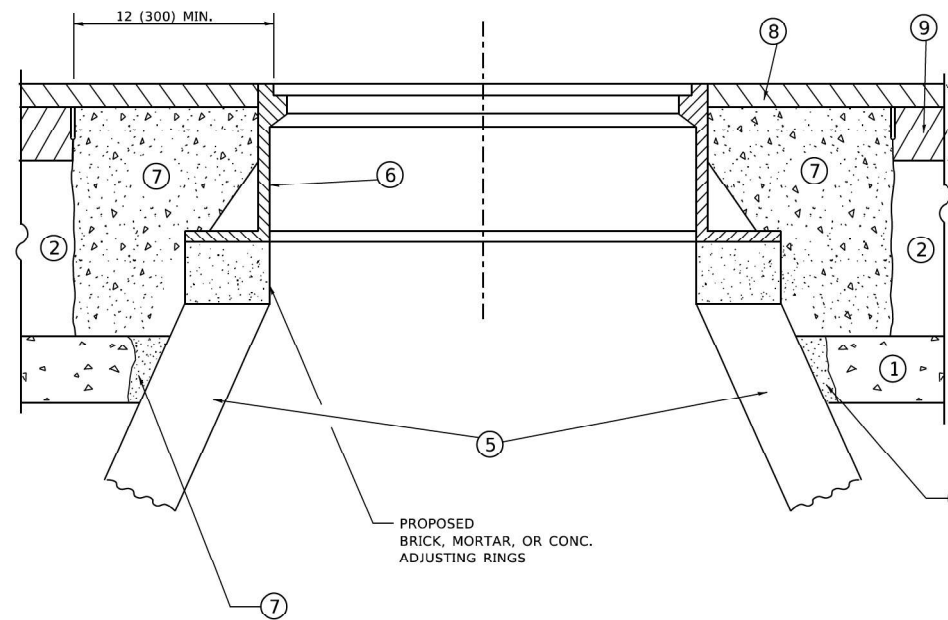
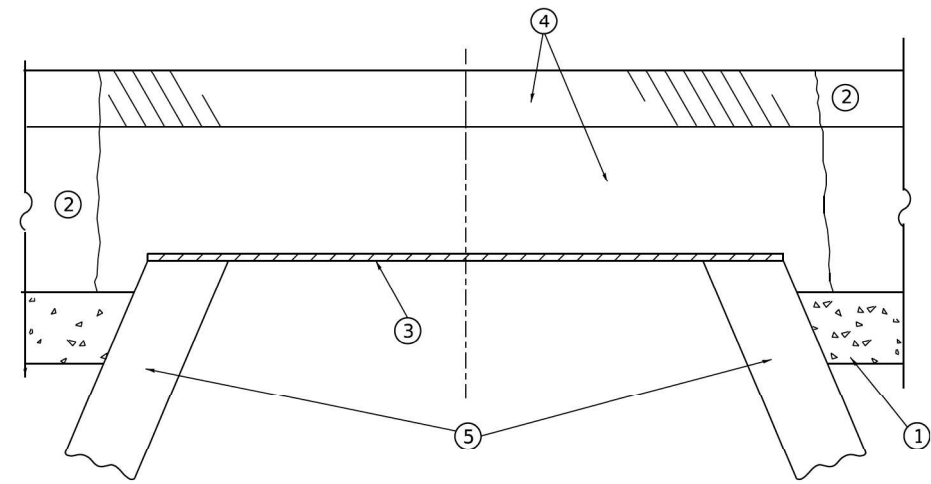
**STATE OF ILLINOIS
DEPARTMENT OF TRANSPORTATION**

**EXISTING RETAINING WALL REPAIR (SHEET 2 OF 2)
(SHEET 2 OF 2)**

SHEET 2 OF 2 SHEETS

F.A.P. RTE.	SECTION	COUNTY	TOTAL SHEETS	SHEET NO.
1281	202 NB012 LOT	COOK	20	15
CONTRACT NO. 62U87				

ILLINOIS FED. AID PROJECT



**DETAILS FOR FRAMES AND LIDS ADJUSTMENT
WITH MILLING**

CONSTRUCTION PROCEDURES

STAGE 1 (BEFORE PAVEMENT MILLING)

- A) REMOVE A MINIMUM OF 12 (300) OF THE PAVEMENT FROM AROUND THE STRUCTURE.
- B) REMOVE THE EXISTING FRAME AND LID FROM THE STRUCTURE.
- C) COVER THE STRUCTURE OPENING WITH A 36 (900) DIAMETER METAL PLATE.
- D) BACKFILL WITH CRUSHED STONE AND HMA SURFACE MIX APPROVED BY THE ENGINEER. (MIN. 3 (80) HMA TO REMAIN AFTER MILLING).

STAGE 2 (AFTER PAVEMENT MILLING)

- A) REMOVE THE HMA SURFACE MIX AND CRUSHED STONE.
- B) INSTALL THE FRAME AND LID; ADJUST THE FRAME TO ITS FINAL SURFACE ELEVATION.
- C) THE SURROUNDING SPACE SHALL BE FILLED WITH CLASS PP-2* CONCRETE TO THE ELEVATION OF THE SURFACE OF THE EXISTING BASE COURSE OR THE BINDER COURSE.

* UNLESS OTHERWISE SPECIFIED IN THE PLANS.

THE PROCEDURE EXPLAINED ABOVE SHALL CONFORM TO THE APPLICABLE PORTIONS OF SECTIONS 353, 406, 602, AND 603 OF THE STANDARD SPECIFICATIONS EXCEPT THAT "THE CONTRACTOR SHALL ADJUST THE STRUCTURES TO THE FINISHED PAVEMENT ELEVATION NO MORE THAN 5 CALENDAR DAYS PRIOR TO PLACEMENT OF THE FINAL LIFT OF SURFACE UNLESS APPROVED BY THE ENGINEER."

LEGEND

- | | |
|--|-------------------------------|
| ① SUB-BASE GRANULAR MATERIAL | ⑥ FRAME AND LID (SEE NOTES) |
| ② EXISTING PAVEMENT | ⑦ CLASS PP-2* CONCRETE |
| ③ 36 (900) DIAMETER METAL PLATE | ⑧ PROPOSED HMA SURFACE COURSE |
| ④ PROPOSED CRUSHED STONE AND HMA SURFACE MIX | ⑨ PROPOSED HMA BINDER COURSE |
| ⑤ EXISTING STRUCTURE | |

LOCATION OF STRUCTURES

THE CONTRACTOR WILL BE REQUIRED TO KEEP A RECORD OF THE LOCATIONS OF THE BURIED STRUCTURES ACCORDING TO THE STATION AND DISTANCE LEFT OR RIGHT OF THE CENTERLINE OF PAVEMENT. UPON COMPLETION OF THE WORK, THE CONTRACTOR WILL DELIVER THE RECORD TO THE ENGINEER.

BASIS OF PAYMENT

1. REMOVING FRAMES AND LIDS ON DRAINAGE AND UTILITY STRUCTURES IN THE PAVEMENT PRIOR TO MILLING, AND ADJUSTING TO FINAL GRADE PRIOR TO PLACING THE SURFACE COURSE, WILL BE PAID FOR AT THE CONTRACT UNIT PRICE EACH FOR "FRAMES AND LIDS TO BE ADJUSTED (SPECIAL)."
2. THIS WORK WILL NOT BE PAID FOR WHEN DRAINAGE AND UTILITY STRUCTURES ARE SPECIFIED FOR PAYMENT AS STRUCTURE RECONSTRUCTION.
3. NEW FRAMES AND LIDS, WHEN SPECIFIED, WILL BE PAID FOR SEPARATELY.
4. WHEN STRUCTURES ARE TO BE ADJUSTED OR RECONSTRUCTED, THE LOWERING AND RAISING OF THE FRAMES AND LIDS WILL NOT BE PAID FOR SEPARATELY BUT WILL BE INCLUDED IN THE COST OF THE CORRESPONDING PAY ITEM.

ALL DIMENSIONS ARE IN INCHES (MILLIMETERS) UNLESS OTHERWISE SHOWN

NOTES

1. EXISTING BROKEN FRAMES AND LIDS SHALL BE REMOVED AND DISPOSED OF BY THE CONTRACTOR AND SHALL BE REPLACED AS DIRECTED BY THE ENGINEER. REPLACEMENT FRAMES AND LIDS WILL BE PAID FOR IN ACCORDANCE WITH ARTICLE 109.04 OF THE STANDARD SPECIFICATIONS UNLESS A SEPARATE PAY ITEM HAS BEEN PROVIDED.
2. IF THE EXISTING LIDS ARE OPEN, THE FRAME WILL BE ADJUSTED TO THE ELEVATION OF THE MILLED PAVEMENT SURFACE PRIOR TO THE MILLING OPERATION. THE FRAME WILL NOT BE REMOVED AND COVERED BY THE METAL PLATE.
3. CITY OF CHICAGO CASTINGS ARE THE PROPERTY OF THE CITY AND THE CONTRACTOR SHALL NOTIFY THE CITY FOR REMOVAL AND DISPOSITION OF THE CASTINGS.
4. THE METAL PLATE USED TO COVER THE STRUCTURE SHALL REMAIN THE PROPERTY OF THE CONTRACTOR.
5. THE CONTRACTOR SHALL REMOVE ALL TRAFFIC CONTROL DEVICES BY THE END OF EACH WORK SHIFT.

MODEL: BD-08
FILE: \\mhp\c\Engineering\1\Borof\1\20005_IDOT_DRAWING_51 - 62187_A01\1\Borof\1\20005_IDOT_DRAWING_51 - 62187_A01\1\Borof\1\20005_IDOT_DRAWING_51 - 62187_A01\1\Borof\1\20005_IDOT_DRAWING_51 - 62187_A01.dwg

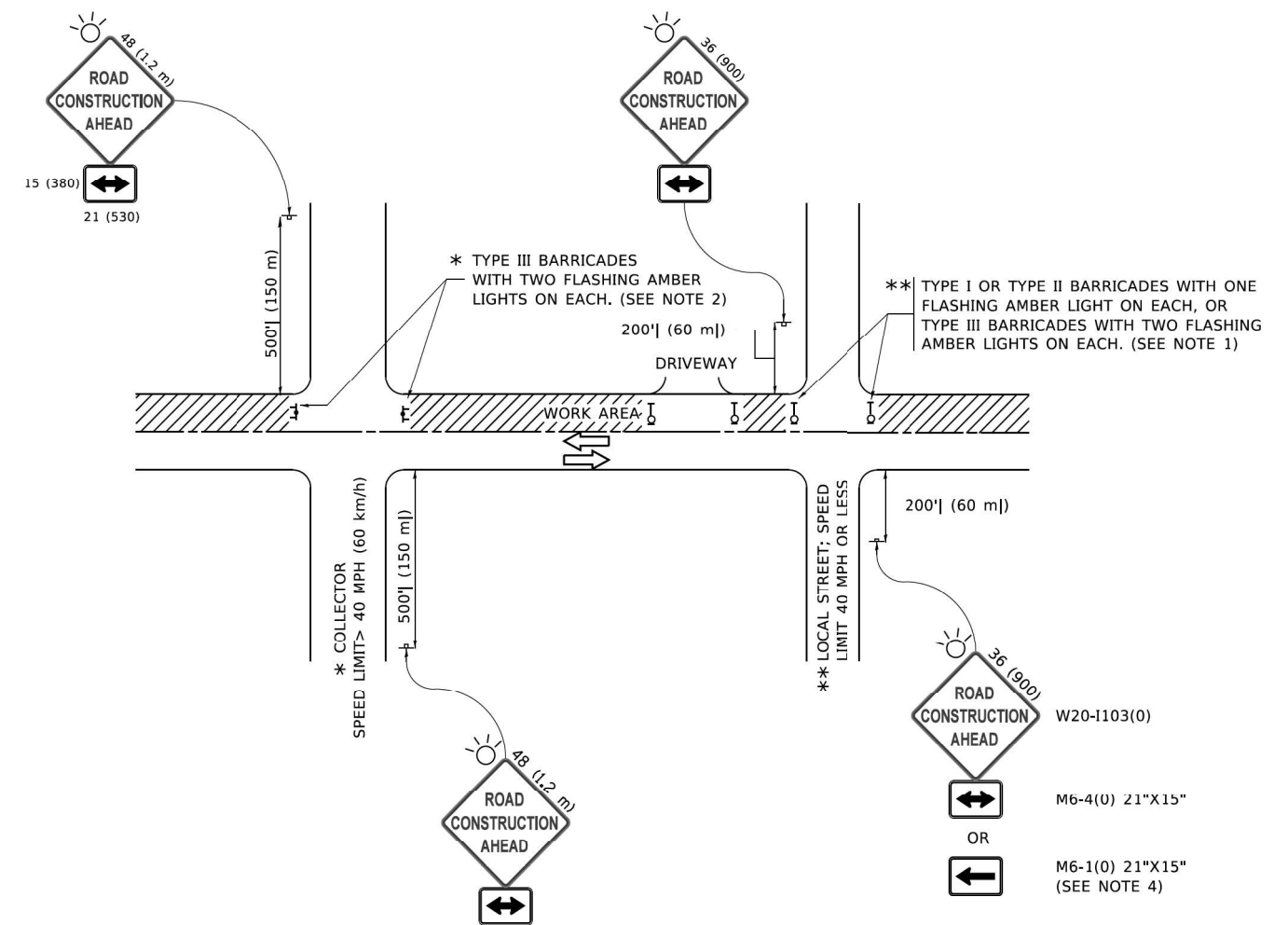
USER NAME = Lawrence,DeManche	DESIGNED - R. SHAH	REVISED - R. BORO 03-09-11
	DRAWN -	REVISED - R. BORO 12-06-11
PLOT SCALE = 100,0000' / in.	CHECKED -	REVISED - K. SMITH 11-18-22
PLOT DATE = 9/15/2023	DATE - 10-25-94	REVISED - K. SMITH 09-15-23

**STATE OF ILLINOIS
DEPARTMENT OF TRANSPORTATION**

**DETAILS FOR
FRAMES AND LIDS ADJUSTMENT WITH MILLING**

SCALE: NONE SHEET 1 OF 1 SHEETS STA. TO STA.

F.A.U. RTE. 1281	SECTION 202 NB012 LOT	COUNTY COOK	TOTAL SHEETS 20	SHEET NO. 18
BD600-03 (BD-08)		CONTRACT NO. 62U87		
ILLINOIS FED. AID PROJECT				



NOTES:

1. SIDE ROAD WITH A SPEED LIMIT OF 40 MPH (60 km/h) OR LESS AS SHOWN ON THE DRAWING AND AS DIRECTED BY THE ENGINEER:
 - a) ONE "ROAD CONSTRUCTION AHEAD" SIGN 36 x 36 (900x900) WITH A FLASHER MOUNTED ON IT APPROXIMATELY 200' (60 m) IN ADVANCE OF THE MAIN ROUTE.
 - b) THE CLOSED PORTION OF THE MAIN ROUTE SHALL BE PROTECTED BY BLOCKING WITH TYPE I, TYPE II OR TYPE III BARRICADES, 1/3 OF THE CROSS SECTION OF THE CLOSED PORTION.
2. SIDE ROAD WITH A SPEED LIMIT GREATER THAN 40 MPH (60 km/h) AS SHOWN ON THE DRAWING AND AS DIRECTED BY THE ENGINEER:
 - a) ONE "ROAD CONSTRUCTION AHEAD" SIGN 48 x 48 (1.2 m x 1.2 m) WITH A FLASHER MOUNTED ON IT APPROXIMATELY 500' (150 m) IN ADVANCE OF THE MAIN ROUTE.
 - b) BLOCKING WITH TYPE III BARRICADES, 1/2 OF THE CROSS SECTION OF THE CLOSED PORTION.
3. CONES MAY BE SUBSTITUTED FOR BARRICADES OR DRUMS AT HALF THE SPACING DURING DAY OPERATIONS. CONES SHALL BE A MINIMUM OF 28 (710) IN HEIGHT.
4. SIGNING AND THE WORK ZONE, A SINGLE HEADED ARROW (M6-1) SHALL BE USED IN LIEU OF THE DOUBLE HEADED ARROW (M6-4).
5. WHEN WORK IS BEING PERFORMED ON A SIDE ROAD OR DRIVEWAY, FOLLOW THE APPLICABLE STANDARD(S). THE DIRECTIONAL ARROW (M6-1 OR M6-4) SHALL BE COVERED OR REMOVED WHEN NO LONGER CONSISTENT WITH THE TRAFFIC CONTROL SET-UP.
6. ADVANCE WARNING SIGNS ARE TO BE OMITTED ON DRIVEWAYS UNLESS OTHERWISE SPECIFIED IN THE PLANS OR BY THE ENGINEER.
7. THE TRAFFIC CONTROL AND PROTECTION FOR SIDE ROADS, INTERSECTIONS, AND DRIVEWAYS SHALL BE INCLUDED IN THE COST OF SPECIFIED TRAFFIC CONTROL STANDARDS OR ITEMS.

All dimensions are in inches (millimeters) unless otherwise shown.

MODEL: TC-10
FILE: \\mme\c\engineering\11\100005\DOT\DIR\WO 51 - 62187\Northbrook\Main\X\1003_CADD\01_SheetSet\11\CA\Drawings\11\2187-sub\dr\tbls\tbls.ctb

USER NAME = footemj	DESIGNED - L.H.A.	REVISED - A. HOUSEH 10-15-96
	DRAWN -	REVISED - T. RAMMACHER 01-06-00
PLOT SCALE = 50,0000' / 1"	CHECKED -	REVISED - A. SCHUETZE 07-01-13
PLOT DATE = 3/4/2019	DATE - 06-89	REVISED - A. SCHUETZE 09-15-16

**STATE OF ILLINOIS
DEPARTMENT OF TRANSPORTATION**

**TRAFFIC CONTROL AND PROTECTION FOR
SIDE ROADS, INTERSECTIONS, AND DRIVEWAYS**

SCALE: NONE SHEET 1 OF 1 SHEETS STA. TO STA.

F.A.U. RTE.	SECTION	COUNTY	TOTAL SHEETS	SHEET NO.
1281	202 NB012 LOT	COOK	20	19
TC-10			CONTRACT NO. 62U87	
ILLINOIS FED. AID PROJECT				

