

# HIGHWAY STANDARDS

482001-02 542001-06 542411  
601001-05 601101-02 782006-01



000001-08	STANDARD SYMBOLS, ABBREVIATIONS AND PATTERNS
001001-02	AREAS OF REINFORCEMENT BARS
001006	DECIMAL OF AN INCH AND OF A FOOT
202001-01	EARTH MEDIAN DITCH CHECK
280001-07	TEMPORARY EROSION CONTROL SYSTEMS
420401-13	PAVEMENT CONNECTOR (PCC) FOR BRIDGE APPROACH SLAB
442101-09	CLASS B PATCHES
482011-03	HMA SHOULDER STRIPS/SHOULDERS WITH RESURFACING OR WIDENING AND RESURFACING PROJECTS
515001-04	NAME PLATE FOR BRIDGES
630001-13	STEEL PLATE BEAM GUARDRAIL
631006-08	TRAFFIC BARRIER TERMINAL, TYPE 1B
631011-10	TRAFFIC BARRIER TERMINAL, TYPE 2
631031-18	TRAFFIC BARRIER TERMINAL, TYPE 6
642001-03	SHOULDER RUMBLE STRIPS, 16 IN.
701101-05	OFF-ROAD OPERATIONS, MULTILANE, 15' (4.5 M) TO 24" (600 MM) FROM PAVEMENT EDGE
701106-02	OFF-ROAD OPERATIONS, MULTILANE, MORE THAN 15' (4.5 M) AWAY
701400-12	APPROACH TO LANE CLOSURE, FREEWAY/EXPRESSWAY
701401-13	LANE CLOSURE, MULTILANE, AT ENTRANCE OR EXIT RAMP, FOR SPEEDS > 45 MPH
701402-12	LANE CLOSURE, FREEWAY/EXPRESSWAY, WITH BARRIER
701416-11	LANE CLOSURE, FREEWAY/EXPRESSWAY, WITH Crossover AND BARRIER
701426-09	LANE CLOSURE, MULTILANE, INTERMITTENT OR MOVING OPERATION, FOR SPEEDS > 45 MPH
701428-01	TRAFFIC CONTROL, SETUP AND REMOVAL, FREEWAY/EXPRESSWAY
701456-05	PARTIAL EXIT RAMP CLOSURE FREEWAY/EXPRESSWAY
701901-09	TRAFFIC CONTROL DEVICES
704001-08	TEMPORARY CONCRETE BARRIER
780001-05	TYPICAL PAVEMENT MARKINGS
781001-04	TYPICAL APPLICATIONS RAISED REFLECTIVE PAVEMENT MARKERS
720011-01	METAL POSTS FOR SIGNS, MARKERS & DELINEATORS
729001-01	APPLICATIONS OF TYPES A & B METAL POSTS (FOR SIGNS & MARKERS)

## GENERAL NOTES

### AVAILABILITY OF ELECTRONIC FILES

MICROSTATION AND GEOPAK FILES OF THIS PROJECT WILL BE MADE AVAILABLE TO THE CONTRACTOR AFTER CONTRACT AWARD. IF THERE IS A CONFLICT BETWEEN THE ELECTRONIC FILES AND THE PRINTED CONTRACT PLANS AND DOCUMENTS, THE PRINTED CONTRACT PLANS AND DOCUMENTS SHALL TAKE PRECEDENCE OVER THE ELECTRONIC FILES. THE CONTRACTOR SHALL ACCEPT ALL RISK ASSOCIATED WITH USING THE ELECTRONIC FILES AND SHALL HOLD THE DEPARTMENT HARMLESS FOR ANY ERRORS OR OMISSIONS IN THE ELECTRONIC FILES AND THE DATA CONTAINED THEREIN. ERRORS OR DELAYS RESULTING FROM THE USE OF THE ELECTRONIC FILES BY THE CONTRACTOR SHALL NOT RESULT IN AN EXTENSION OF TIME FOR ANY INTERIM OR FINAL COMPLETION DATE OR SHALL NOT BE CONSIDERED CAUSE FOR ADDITIONAL COMPENSATION. THE CONTRACTOR SHALL NOT USE, SHARE, OR DISTRIBUTE THESE ELECTRONIC FILES EXCEPT FOR THE PURPOSE OF CONSTRUCTING THIS CONTRACT. ANY CLAIMS BY THIRD PARTIES DUE TO USE OR ERRORS SHALL BE THE SOLE RESPONSIBILITY OF THE CONTRACTOR. THE CONTRACTOR SHALL INCLUDE THIS DISCLAIMER WITH THE TRANSFER OF THESE ELECTRONIC FILES TO ANY OTHER PARTIES AND SHALL INCLUDE APPROPRIATE LANGUAGE BINDING THEM TO SIMILAR RESPONSIBILITIES.

### PLAN ELEVATIONS - U.S.G.S. MEAN SEA LEVEL DATUM

ALL ELEVATIONS SHOWN ON THE PLANS ARE ESTABLISHED FROM U.S.G.S. MEAN SEA LEVEL DATUM.

### BRIDGE OVERLAY NOTIFICATION

AFTER PLACEMENT OF THE BRIDGE DECK OVERLAY, THE RESIDENT ENGINEER SHALL NOTIFY THE DISTRICT BRIDGE MAINTENANCE ENGINEER OF THE "AS CONSTRUCTED" MILLING DEPTH AND OVERLAY THICKNESS FOR UPDATING THE ILLINOIS HIGHWAY INFORMATION SYSTEM.

### HOT - MIX ASPHALT MIXTURE REQUIREMENTS

THE FOLLOWING MIXTURE REQUIREMENTS ARE APPLICABLE FOR THIS PROJECT:

LOCATION(S)	MAINLINE	SHOULDERS	CROSSOVERS	CROSSOVERS
MIXTURE USE(S):	POLYMER SMA SURFACE	SURFACE LIFT	9 1/4" POLYMER	2" SURFACE LIFT
AC/PG:	SBS or SBR 70-28	PG 58-28	SBS or SBR 70-28	SBS or SBR 70-28
DESIGN AIR VOIDS:	4.0% @ N=80	4.0% @ N=50	4.0% @ N=70	4.0% @ N=70
MIXTURE COMPOSITION (MIXTURE GRADATION):	IL 12.5	IL 9.5 FG	IL 19.0	IL 9.5
FRICTION AGGREGATE:	MIX E	MIX C	N/A	MIX D
QUALITY MANAGEMENT PROGRAM:	QCQA	QCQA	QCQA	QCQA
MATERIAL TRANSFER DEVICE:	YES	YES	YES	YES

### NOTES

- INDIVIDUAL LIFT THICKNESS OF EACH MIX TYPE WILL BE NO LESS THAN 3 TIMES NOMINAL MAXIMUM AGGREGATE SIZE AND NO MORE THAN 6 TIMES NOMINAL MAXIMUM AGGREGATE SIZE, UNLESS OTHERWISE APPROVED BY THE ENGINEER.
- FOR DESIGN PURPOSES, MIXTURE WEIGHT FOR ALL MIXES IS DETERMINED TO BE 112.0 LB/S.Y./IN., UNLESS OTHERWISE NOTED.
- SUBLOT SIZES FOR PFP AND QCP MIXES WILL BE 1000 TONS, UNLESS OTHERWISE AGREED TO BY THE ENGINEER AND THE PAVIN CONTRACTOR.

### ENVIRONMENTAL REVIEWS

PRIOR TO THE USE OF ANY PROPOSED BORROW AREAS, USE AREAS (TEMPORARY ACCESS ROADS, DETOURS, RUN-AROUNDS, ETC.) AND/OR WASTE AREAS, THE CONTRACTOR SHALL FILE THE REQUIRED ENVIRONMENTAL RESOURCE REQUEST SURVEYS ACCORDING TO SECTION 107.22 OF THE STANDARD SPECIFICATIONS. THESE SURVEYS ARE REQUIRED IN ORDER FOR THE DEPARTMENT TO CONDUCT CULTURAL AND BIOLOGICAL RESOURCE SURVEYS FOR THE PROPOSED SITE.

THE REQUIRED ENVIRONMENTAL RESOURCE DOCUMENTATION SHALL INCLUDE THE FOLLOWING:

- BDE FORM 2289 (BORROW SITE REVIEW)
- BDE FORM 2290 (WASTE/USE AREA REVIEW)
- A LOCATION MAP SHOWING THE SIZE LIMITS AND LOCATION OF THE USE AREA
- COLOR PHOTOGRAPHS DEPICTING THE USE AREA
- BORROW AREA ENTRY AGREEMENT FORM - D4 P10101

PRIOR TO ANY WASTE MATERIALS BEING REMOVED FROM THE CONSTRUCTION SITE THE REQUIRED ENVIRONMENTAL RESOURCE SURVEYS SHALL BE OBTAINED AND FILED BY THE CONTRACTOR. EXCESS WASTE PRODUCTS REMOVED FROM THE CONSTRUCTION SITE SHALL BE DISPOSED OF AS REQUIRED IN SECTION 202.03 OF THE STANDARD SPECIFICATIONS.

ANY PROTRUDING METAL BARS SHALL BE REMOVED PRIOR TO THE DISPOSAL OF BROKEN CONCRETE AT APPROVED DISPOSAL SITES.

PLEASE NOTE THAT A MINIMUM OF FOUR WEEKS SHALL BE ALLOWED FOR THE DISTRICT TO OBTAIN THE REQUIRED WASTE SITE ENVIRONMENTAL CLEARANCES AND SIX WEEKS FOR THE REQUIRED BORROW SITE ENVIRONMENTAL CLEARANCES.

### PAVEMENT STATION NUMBERS & PLACEMENT

THE CONTRACTOR SHALL PROVIDE LABOR AND MATERIALS REQUIRED TO IMPRINT PAVEMENT STATION NUMBERS IN THE FINISHED SURFACE OF THE PAVEMENT AND/OR OVERLAY. THE NUMBERS SHALL BE APPROXIMATELY 3/4 INCH (20 MM) WIDE, 5 INCHES (125 MM) HIGH AND 5/8 INCH (15 MM) DEEP.

THE PAVEMENT STATION NUMBERS SHALL BE INSTALLED AS SPECIFIED HEREIN:

INTERVAL 200 FEET (ENGLISH STATIONING) OR 100 METERS (METRIC STATIONING)

BOTTOM OF NUMBERS 6 INCHES (150 MM) FROM THE INSIDE EDGE OF THE PAVEMENT MARKING

LOCATION:

- 2, 3 & 5 LANE PAVEMENTS RIGHT EDGE OF PAVEMENT IN DIRECTION OF INCREASING STATIONS
- MULTI-LANE DIVIDED ROADWAYS OUTSIDE EDGE OF PAVEMENT IN BOTH DIRECTIONS
- RAMPS ALONG BASELINE EDGE OF PAVEMENT

POSITION STATIONERS SHALL BE PLACED SO THEY CAN BE READ FROM THE ADJACENT SHOULDERS

FORMAT ENGLISH (METRIC) PAVEMENT STATIONS SHALL USE THIS FORMAT "XXX (XX+X00)" WHERE X REPRESENTS THE PAVEMENT STATION

THIS WORK WILL NOT BE PAID FOR SEPARATELY, BUT WILL BE CONSIDERED INCLUDED IN THE COST OF THE ASSOCIATED PAVEMENT AND/OR OVERLAY PAY ITEMS.

### POLYMERIZED BITUMINOUS MATERIALS (TACK COAT) RATES

SURFACE TYPE	RESIDUAL RATE
MILLED (HMA OR PCC)	0.08 LB/SF
EXISTING PAVEMENT	0.08 LB/SF
FOG COAT (BETWEEN LIFTS)	0.08 B/SF

### PAVING SURFACE COURSE

CONTINUOUS PAVING OPERATIONS ON THE MAIN ROADWAY SHALL BE MAINTAINED AT ALL TIMES DURING THE CONSTRUCTION OF THE HOT-MIX ASPHALT SURFACE. NO INTERRUPTIONS FOR SIDE ROADS, ENTRANCES, TURN LANES, ETC. WILL BE ALLOWED.

### CROSSING EXISTING STRUCTURE WITH EQUIPMENT

THE FOLLOWING STRUCTURES, SN 072-0115 (40 TONS), SN 072-0114 (40 TONS), MAY BE CROSSED WITH AN EMPTY MTD OR WITH THE MAXIMUM TONNAGE LISTED.

ANY STRUCTURES NOT LISTED ABOVE SHALL BE VERIFIED BY THE RESIDENT PRIOR TO BEGINNING WORK.

### ORDERING LENGTH CONFIRMATION - DRAINAGE ITEMS

THE CONTRACTOR SHALL CONSULT WITH THE ENGINEER IN REGARD TO THE EXACT LENGTH OF THE BOX/PIPE CULVERTS, STORM SEWERS, AND/OR PIPE DRAINS REQUIRED PRIOR TO ORDERING THESE ITEMS.

### SECURING DRAINAGE STRUCTURE GRATES

PRIOR TO ROUTING TRAFFIC ONTO THE SHOULDERS AS SHOWN IN THE STAGING PLANS, THE CONTRACTOR SHALL SECURE GRATINGS ON SHOULDER INLETS AS DIRECTED BY THE ENGINEER. THIS WORK WILL NOT BE PAID FOR SEPARATELY, BUT SHALL BE INCLUDED IN THE COST OF THE TRAFFIC CONTROL PAY ITEM.

### ADDITIONAL SUPPLEMENTAL TRAFFIC CONTROL

THE DEPARTMENT RESERVES THE RIGHT AT ANY TIME TO ADD ADDITIONAL TRAFFIC CONTROL SYSTEMS OR DEVICES WITHIN THE ACTIVE CONTRACT LIMITS, BY MEANS OF AN ADDITIONAL CONTRACT. ALL TERMS OF ARTICLE 105.08 OF THE STANDARD SPECIFICATIONS SHALL BE FOLLOWED BY EACH CONTRACTOR.

### REMOVAL OF VEGETATION AND UNSUITABLE SOILS

THE CONTRACTOR SHALL REMOVE VEGETATION AND UNSUITABLE SOILS PRIOR TO CONSTRUCTION OF EMBANKMENTS FOR THE TEMPORARY CROSSEOVERS. THIS WORK WILL BE PAID FOR AT THE CONTRACT UNIT PRICE FOR REMOVAL AND DISPOSAL OF UNSUITABLE MATERIAL. THE QUANTITY FOR THIS ITEM WAS CALCULATED BASED AN ESTIMATED 3 INCH DEPTH OF REMOVAL.

### STATUS OF UTILITIES

THERE ARE NO ANTICIPATED CONFLICTS ON THIS CONTRACT.

### AGGREGATE SUBGRADE IMPROVEMENT

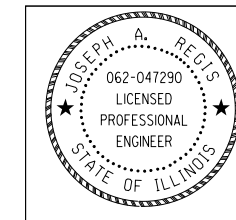
THE AGGREGATE GRADATION FOR THE AGGREGATE SUBGRADE IMPROVEMENT 12" LOWER LIFT SHALL BE CS 1 OR RR 1.

### EXISTING SUPERELEVATIONS

PRIOR TO MILLING, THE CONTRACTOR SHALL SURVEY THE EXISTING SUPERELEVATION RATES AND TRANSITIONS WITHIN THE LIMITS OF THE PROPOSED MILLING AND RESURFACING. THE RESIDENT ENGINEER SHALL DETERMINE THE AVERAGE RATE OF THE EXISTING PAVEMENT WHICH SHALL BE USED FOR THE PROPOSED MILLING AND RESURFACING UNLESS THE RATE IS OUTSIDE OF POLICY VALUES. THE COST FOR THIS WORK SHALL BE INCLUDED IN THE CONTRACT UNIT PRICE FOR POLYMERIZED HOT-MIX ASPHALT SURFACE COURSE, STONE MATRIX ASPHALT, 12.5, MIX "E", N80.

## COMMITMENTS

NO COMMITMENTS



Signed: Joseph A. Regis  
Date: 2/1/2024  
Expires: 11/30/2025

AMES Engineering, Inc.  
CONSULTING ENGINEERS  
8330 Belmont Road, Suite 4B  
Downers Grove, IL 60516



Signed: Vinod C. Patel  
Date: 2/1/2024  
Expires: 11/30/2024

exp U.S. Services Inc.  
Chicago, IL  
BUILDINGS-EARTH & ENVIRONMENT-ENERGY  
INDUSTRIAL-INFRASTRUCTURE-SUSTAINABILITY

APPLIES TO SHEET NOS 36-37, 43-67, AND 170-224  
AMES ENGINEERING INC IS ILLINOIS PROFESSIONAL  
DESIGN FIRM NO. 184.002888-0002

APPLIES TO SHEET NOS 79-153  
EXP U.S. SERVICES INC. IS ILLINOIS PROFESSIONAL  
DESIGN FIRM NO. 184.006387-007



USER NAME = PARRAV	DESIGNED = D Hansen	REVISED =
	DRAWN = V Parra	REVISED =
PLOT SCALE = 0.16666633' / IN.	CHECKED = K Antonson	REVISED =
PLOT DATE = 2/13/2024	DATE = 2/16/2024	REVISED =

STATE OF ILLINOIS  
DEPARTMENT OF TRANSPORTATION


### HIGHWAY STANDARDS, GENERAL NOTES, AND COMMITMENTS

SCALE: SHEET OF SHEETS STA. TO STA.

F.A.I. RTE.	SECTION	COUNTY	TOTAL SHEETS	SHEET NO.
474	(72-2BVB)BRR	PEORIA	224	2
				CONTRACT NO. 68880
		ILLINOIS	FED. AID PROJECT	

SPL'TY ITEM	CODE NO.	ITEM	UNIT	TOTAL QUANTITY	CONSTRUCTION CODE				
					NHPP FUNDS	NHPP-NHS BRIDGE PENALTY FUNDS		NHPP FUNDS	
					90% FED / 10% STATE	90% FED / 10% STATE	90% FED / 10% STATE	90% FED / 10% STATE	
					I 0004 URBAN	II 0013 URBAN	III 0013 URBAN	IV 0004 URBAN	
	70300150	SHORT TERM PAVEMENT MARKING REMOVAL	SQ FT	18,945	18,945				
	70300100	SHORT TERM PAVEMENT MARKING	FOOT	2,680	2,680				
	70307120	TEMPORARY PAVEMENT MARKING - LINE 4" - TYPE IV TAPE	FOOT	36,697	36,697				
	70307125	TEMPORARY PAVEMENT MARKING - LINE 5" - TYPE IV TAPE	FOOT	2,530	2,530				
	70307140	TEMPORARY PAVEMENT MARKING - LINE 8" - TYPE IV TAPE	FOOT	4,821	4,821				
	70307160	TEMPORARY PAVEMENT MARKING - LINE 12" - TYPE IV TAPE	FOOT	335	335				
	70400100	TEMPORARY CONCRETE BARRIER	FOOT	11,149	11,149				
	70400200	RELOCATE TEMPORARY CONCRETE BARRIER	FOOT	10,195	10,195				
	70500200	TEMPORARY STEEL PLATE BEAM GUARDRAIL, TYPE B	FOOT	1,338	1,338				
	70500625	TEMPORARY TRAFFIC BARRIER TERMINAL, TYPE 2	EACH	3	3				
	70500665	TEMPORARY TRAFFIC BARRIER TERMINAL, TYPE 6	EACH	2	2				
*	72501000	TERMINAL MARKER - DIRECT APPLIED	EACH	4	4				
*	78000200	THERMOPLASTIC PAVEMENT MARKING - LINE 4"	FOOT	20,640	20,640				

**LEGEND**  
I = ROADWAY & NON-STRUCTURAL ITEMS  
II = EB BRIDGE - STRUCTURE NUMBER 072-0114  
III = WB BRIDGE - STRUCTURE NUMBER 072-0115  
IV = LIGHTING

	USER NAME = SWANSONAL	DESIGNED - D Hansen	REVISED -	<b>STATE OF ILLINOIS DEPARTMENT OF TRANSPORTATION</b>	<b>SUMMARY OF QUANTITIES</b>				F.A.I. RTE.	SECTION	COUNTY	TOTAL SHEETS	SHEET NO.
	PLOT SCALE = 0.16666633' / IN.	DRAWN - V Parra	REVISED -						474	(72-2BVB)BRR	PEORIA	224	10
	PLOT DATE = 3/15/2024	CHECKED - K Antonson	REVISED -		SCALE: SHEET OF SHEETS STA. TO STA.				CONTRACT NO. 68880				
DATE = 3/15/2024				REVISED -					ILLINOIS FED. AID PROJECT				

70300150 SHORT TERM PAVEMENT MARKING REMOVAL				TOTAL	18945 SQ FT
STAGE/LOCATION	STARTING STA	ENDING STA	TOTAL LENGTH	SUBTOTALS	
STAGE 1					
EB	55+80.45	82+20.25	659.95	277	
WB	56+68.95	78+54.34	546.3475	229	
EB 474	55+80.45	82+20.25	2639.8	898	
	55+80.45	82+20.25	2639.8	898	
WB 474	55+48.00	78+54.34	2306.34	784	
	53+80.00	87+54.35	3374.35	1147	
EB 74 RAMP TO EB 474	20+00.00	48+05.00	2805	954	
	20+00.00	55+80.45	3580.45	1217	
WB 74 RAMP TO EB 474		SCALED	1675	570	
		SCALED	1195	406	
STAGE 2					
EB	38+70.00	77+66.68	974.17	409	
WB	41+45.00	81+40.00	998.75	419	
WB 474	55+80.45	82+20.25	2639.8	898	
	56+68.95	78+54.34	2185.39	743	
EB 474	55+80.45	82+20.25	2639.8	898	
	56+68.95	78+54.34	2185.39	743	
WB 474 RAMP TO EB 74	55+80.45	82+20.25	2639.8	898	
	56+68.95	78+54.34	2185.39	743	
WB 474 RAMP TO WB 74	55+80.45	82+20.25	2639.8	898	
	56+68.95	78+54.34	2185.39	743	
EB 474 RAMP TO EB 74	55+80.45	82+20.25	2639.8	898	
	56+68.95	78+54.34	2185.39	743	
EB 474 RAMP TO WB 74	55+80.45	82+20.25	2639.8	898	
	56+68.95	78+54.34	2185.39	743	
PHASE 2A				893	

70307125 TEMPORARY PAVEMENT MARKING LINE 5" - TYPE IV TAPE				TOTAL	2530 FOOT
STAGE	STARTING STA	ENDING STA	SUBTOTALS		
STAGE 1					
EB	55+80.45	83+60.00	695		
WB	57+93.43	78+54.34	515		
STAGE 2					
EB	54+60.00	76+70.00	553		
WB	48+00.00	50+00.00	50		
	53+50.00	82+20.00	718		

70400200 RELOCATE TEMPORARY CONCRETE BARRIER				TOTAL	10195 FOOT
STAGE	STARTING STA	ENDING STA	SUBTOTALS		
PRE STAGE 2					
	40+52.00	44+89.00			
	44+46.00	47+28.00			
					719
STAGE 1	(A TOTAL OF 719 FT OF TCB TO BE RELOCATED INTO STAGE 1 - SEE TCB)				719
STAGE 1A-1	(A TOTAL OF 2658 FT OF TCB TO BE RELOCATED INTO STAGE 1A-1 - SEE TCB)				2658
STAGE 1A-2					
	40+52.00	44+89.00			
	44+46.00	47+28.00			
					719
STAGE 1A-3	(A TOTAL OF 719 FT OF TCB TO BE RELOCATED INTO STAGE 1A-3 - SEE TCB)				719
STAGE 2	(A TOTAL OF 882 FT OF TCB TO BE RELOCATED INTO STAGE 2 - SEE TCB)				882
STAGE 2A-1	(A TOTAL OF 2897 FT OF TCB TO BE RELOCATED INTO STAGE 2A-1 - SEE TCB)				2897
STAGE 2A-2					
	41+64.00	47+51.00			
	45+78.00	48+73.00			
					882

70307140 TEMPORARY PAVEMENT MARKING LINE 8" - TYPE IV TAPE				TOTAL	4821 FOOT
STAGE	STARTING STA	ENDING STA	SUBTOTALS		
STAGE 1					
	48+10.00	53+20.26	2041.04		
STAGE 2					
	43+65.00	45+00.00	540		
	50+00.00	53+50.00	1400		
	52+50.00	54+60.00	840		

70400100 TEMPORARY CONCRETE BARRIER				TOTAL	11149 FOOT
STAGE	STARTING STA	ENDING STA	SUBTOTALS		
PRE STAGE 1					
	38+76.00	49+38.00			
	50+79.00	58+55.00			
	68+61.00	82+58.00			
	71+73.00	83+97.00			
					4459
PRE STAGE 2	(A TOTAL OF 719 FT OF TCB TO BE RELOCATED INTO PRE STAGE 2 - SEE RELOCATE TCB)				
STAGE 1					
	51+72.00	78+30.00			
					1939
STAGE 1A-1					
	38+76.00	55+22.00			
	39+12.00	58+55.00			
					931
STAGE 1A-2	(A TOTAL OF 719 FT OF TCB TO BE RELOCATED INTO STAGE 1A-2 - SEE RELOCATE TCB)				
STAGE 1A-3					
	41+64.00	47+51.00			
	45+78.00	48+73.00			
					163
STAGE 2					
	49+83.00	78+80.00			
					2015
STAGE 2A-1					
	39+18.00	51+00.00			
	47+92.00	55+20.00			
	68+60.00	82+59.00			
	71+70.00	84+00.00			
					1642
STAGE 2A-2	(A TOTAL OF 882 FT OF TCB TO BE RELOCATED INTO STAGE 2A-2 - SEE RELOCATE TCB)				

70307120 TEMPORARY PAVEMENT MARKING - LINE 4" - TYPE IV TAPE				TOTAL	36697 FOOT
STAGE/LOCATION	STARTING STA	ENDING STA	SUBTOTALS		
STAGE 1					
EB 474	55+80.45	82+20.25	2640		
	55+80.45	82+20.25	2640		
WB 474	57+93.43	78+54.34	2061		
	57+93.43	78+54.34	2061		
EB 74 RAMP TO EB 474	10+00.00	19+10.00	910		
	10+00.00	19+10.00	910		
WB 74 RAMP TO EB 474	20+00.00	48+00.00	2800		
	20+00.00	48+00.00	2800		
STAGE 2					
WB 474	53+50.00	82+20.00	2870		
	53+50.00	82+20.00	2870		
EB 474	54+60.00	76+70.00	2210		
	54+60.00	76+70.00	2210		
WB 474 RAMP TO EB 74	45+00.00	50+00.00	500		
	56+68.95	78+54.34	2185		
	40+85.00	43+65.00	280		
	40+85.00	43+65.00	280		
WB 474 RAMP TO NB IL 6	40+00.00	43+65.00	365		
	40+00.00	43+65.00	365		
WB 474 RAMP TO WB 74	39+00.00	50+00.00	1100		
	39+00.00	50+00.00	1100		
SB IL 6 RAMP TO EB 1-474	44+40.00	52+50.00	810		
	44+40.00	52+50.00	810		
EB 74 RAMP TO EB 1-474	42+90.00	52+50.00	960		
	42+90.00	52+50.00	960		

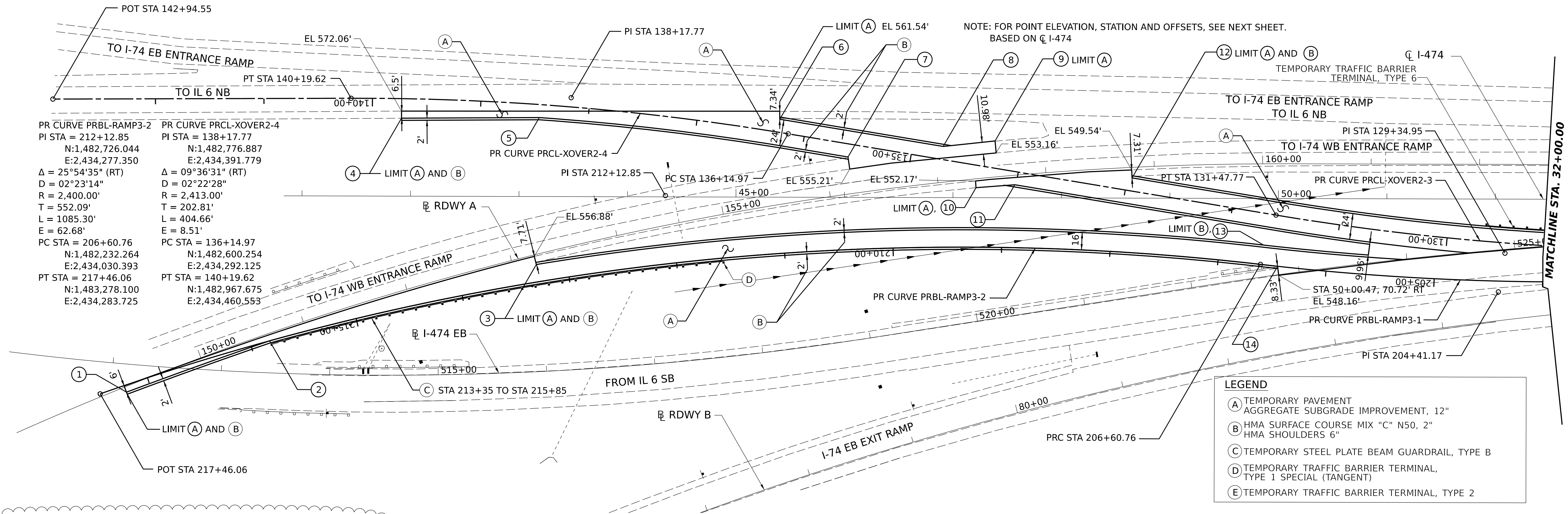
70400100 TEMPORARY CONCRETE BARRIER				TOTAL	11149 FOOT
STAGE	STARTING STA	ENDING STA	SUBTOTALS		
PRE STAGE 1					
	38+76.00	49+38.00			
	50+79.00	58+55.00			
	68+61.00	82+58.00			
	71+73.00	83+97.00			
					4459
PRE STAGE 2	(A TOTAL OF 719 FT OF TCB TO BE RELOCATED INTO PRE STAGE 2 - SEE RELOCATE TCB)				
STAGE 1					
	51+72.00	78+30.00			
					1939
STAGE 1A-1					
	38+76.00	55+22.00			
	39+12.00	58+55.00			
					931
STAGE 1A-2	(A TOTAL OF 719 FT OF TCB TO BE RELOCATED INTO STAGE 1A-2 - SEE RELOCATE TCB)				
STAGE 1A-3					
	41+64.00	47+51.00			
	45+78.00	48+73.00			
					163
STAGE 2					
	49+83.00	78+80.00			
					2015
STAGE 2A-1					
	39+18.00	51+00.00			
	47+92.00	55+20.00			
	68+60.00	82+59.00			
	71+70.00	84+00.00			
					1642
STAGE 2A-2	(A TOTAL OF 882 FT OF TCB TO BE RELOCATED INTO STAGE 2A-2 - SEE RELOCATE TCB)				

	USER NAME = PARRAV	DESIGNED - D Hansen	REVISED - 4/10/2024	<b>STATE OF ILLINOIS</b> <b>DEPARTMENT OF TRANSPORTATION</b>	<b>SCHEDULE OF QUANTITIES</b>				F.A.I. RTE.	SECTION	COUNTY	TOTAL SHEETS	SHEET NO.
		DRAWN - J Hurtado	REVISED -		474	(72-2BVB)BRR	PEORIA	224	23				
	PLOT SCALE = 0.16666633' / IN.	CHECKED - K Antonson	REVISED -		CONTRACT NO. 68880				ILLINOIS FED. AID PROJECT				
	PLOT DATE = 4/10/2024	DATE - 3/15/2024	REVISED -	SCALE:	SHEET	OF	SHEETS	STA.	TO STA.				

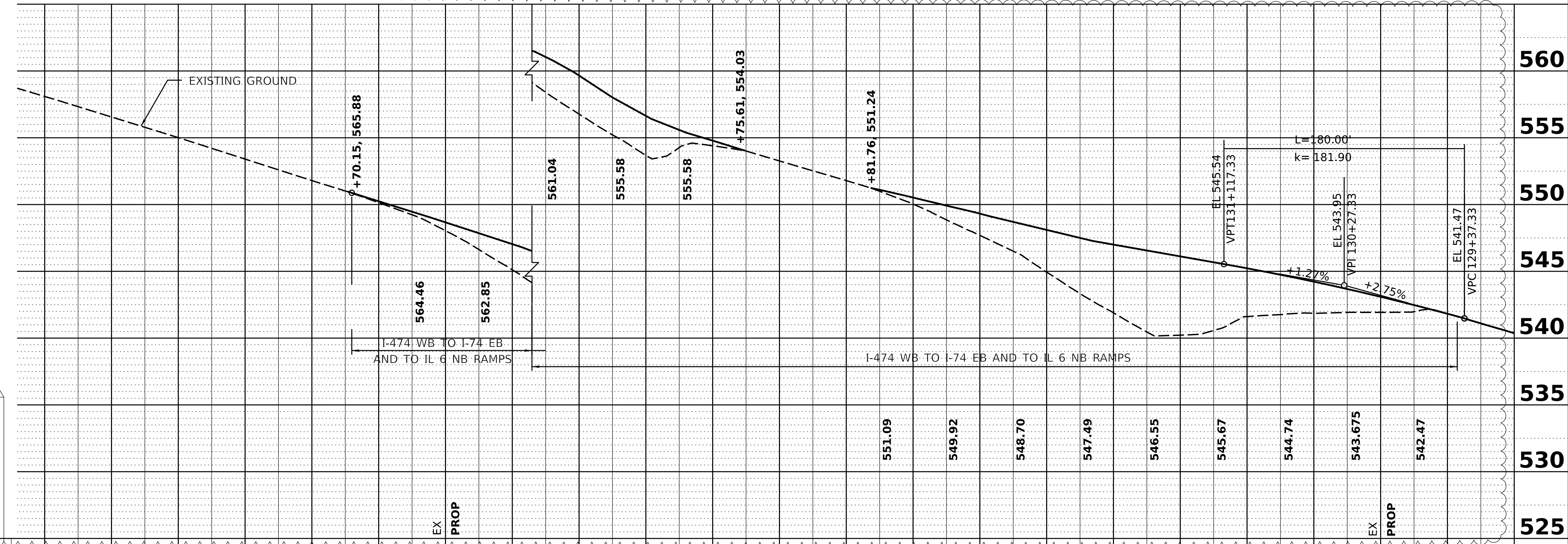
DATE	
BY	
PLAN	SURVEYED
	ALIGNED
	CHECKED
	NOTED
	FILE NAME
	NO.

DATE	
BY	
PROFILE	SURVEYED
	GRADES
	CHECKED
	NOTED
	STRUCTURE
	NOTATIONS
	CHKD
	NO.

MODEL: STAGE 2 GEOMETRY SHEET 6 RAMP 3  
 FILE NAME: C:\PW\WORK\EXP\BENTLEY\COM\EXP-PW-01\DD14550\DD14550\DD14550-SHT-STAGING-17.DGN



STATION	PROP ELE	STATION	PROP ELE	STATION	PROP ELE
129+70	542.34	132+80	548.82	136+70	562.69
129+80	542.6	132+90	549.06	136+80	563.02
129+90	542.85	133+00	549.32	136+90	563.34
130+00	543.09	133+10	549.56	137+00	563.66
130+10	543.33	133+20	549.8	137+10	563.99
130+20	543.56	133+30	550.04	137+20	564.3
130+30	543.79	133+40	550.28	137+30	564.61
130+40	544.01	133+50	550.52	137+40	564.93
130+50	544.23	133+60	550.76	137+50	565.24
130+60	544.44	133+70	550.98	137+60	565.55
130+70	544.64	133+80	551.2	137+70	565.86
130+80	544.84				
130+90	545.03	134+80	554.16		
131+00	545.22	134+90	554.47		
131+10	545.51	135+00	554.78		
131+20	545.58	135+10	555.08		
131+30	545.76	135+20	555.38		
131+40	545.94	135+30	555.78		
131+50	546.11	135+40	556.17		
131+60	546.29	135+50	556.63		
131+70	546.46	135+60	557.19		
131+80	546.64	135+70	557.74		
131+90	546.82	135+80	558.34		
132+00	546.99	135+90	558.99		
132+10	547.17	136+00	559.65		
132+20	547.37	136+10	560.24		
132+30	547.61	136+20	560.79		
132+40	547.85	136+30	561.29		
132+50	548.09	136+40	561.69		
132+60	548.34	136+50	562.04		
132+70	548.58	136+60	562.36		



580.56	579.03	577.54	576.06	574.58	573.09	571.57	570.01	568.41	566.79	565.14	563.04	562.03	556.77	553.68	553.26	551.79	550.03	549.32	548.70	547.49	546.55	545.67	544.74	543.675	542.47	541.83	541.82	540.36	540.36
143+00	142+00	141+00	140+00	139+00	138+00	137+00	136+00	135+00	134+00	133+00	132+00	131+00	130+00	129+00															

**AMES Engineering, Inc.**  
 CONSULTING ENGINEERS  
 8330 Belmont Road, Suite 4B  
 Downers Grove, IL 60516

USER NAME = MDITCHE	DESIGNED - JR	REVISED - 1/4/2024
DRAWN - MD	REVISOR -	
CHECKED - AS	REVISOR -	
DATE - 3/15/2024	REVISOR -	

**STATE OF ILLINOIS**  
**DEPARTMENT OF TRANSPORTATION**

**STAGING AND TRAFFIC CONTROL**  
**STAGE 2 GEOMETRY I-74 WB TO I-74 EB AND TO IL 6 NB RAMP**  
 SCALE: 1"=50' SHEET OF SHEETS STA. TO STA.

F.A.I. RTE. 474	SECTION (72-2BVB)BRR	COUNTY PEORIA	TOTAL SHEETS 224	SHEET NO. 63
ILLINOIS FED. AID PROJECT CONTRACT NO. 68880				