

STATE OF ILLINOIS  
DEPARTMENT OF TRANSPORTATION

**PROPOSED  
HIGHWAY PLANS**

F.A.I. ROUTE 72 (I-72)  
SECTION (10-33HB-2)BR  
PROJECT HBFP-VL3G(874)  
BRIDGE REPLACEMENT  
CHAMPAIGN COUNTY

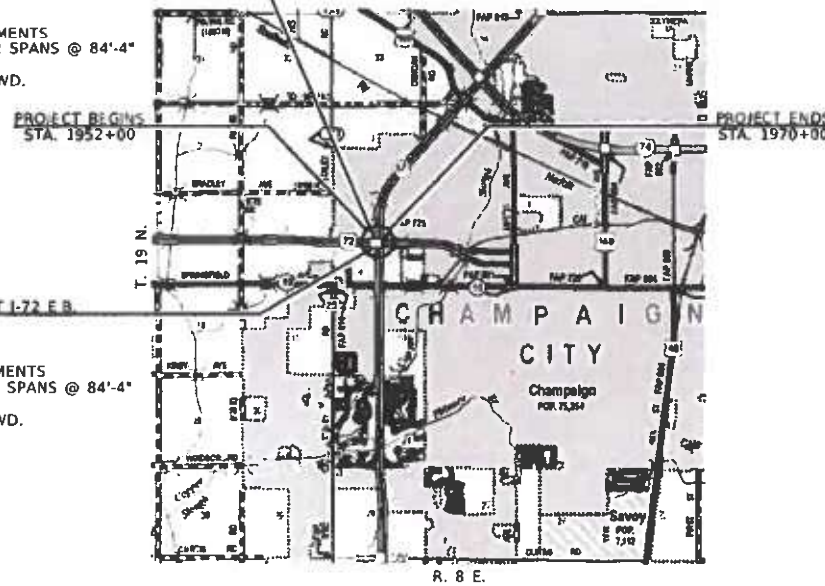
F.A.I. RTE.	SECTION	COUNTY	TOTAL SHEETS	SHEET NO.
72	(10-33HB-2)BR	CHAMPAIGN	300*	1
* 300 + 1 = 301 TOTAL SHEETS			CONTRACT NO. 70254	
P-95-008-21				

FOR INDEX OF SHEETS, SEE SHEET NO. 2  
FOR SUMMARY OF QUANTITIES SEE SHEET NOS. 3-13

C-95-096-02  
OVER I-57 WEST  
OF CHAMPAIGN

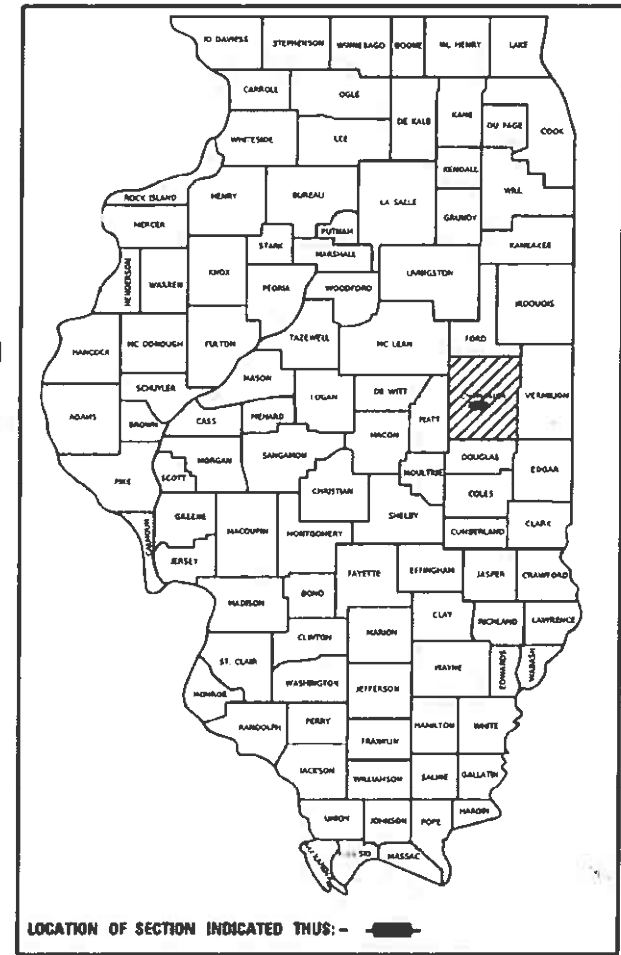
BRIDGE REPLACEMENT I-72 W.B.  
EXIST. S.N. 010-0035  
PROP. S.N. 010-0297  
STA. 1960+68.83 I-72  
272'-4" BK-BK. ABUTMENTS  
2 SPANS @ 51'-10". 2 SPANS @ 84'-4"  
REINF. CONC. DECK  
1'22'45" SKEW RT. FWD.

BRIDGE REPLACEMENT I-72 E.B.  
EXIST. S.N. 010-0034  
PROP. S.N. 010-0296  
STA. 1960+70.95 I-72  
272'-4" BK-BK. ABUTMENTS  
2 SPANS @ 51'-10". 2 SPANS @ 84'-4"  
REINF. CONC. DECK  
1'22'45" SKEW RT. FWD.



**LOCATION MAP**  
SCALE = 1" = 1 MILE

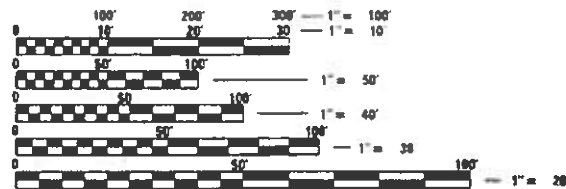
GROSS LENGTH = 1800.00 FT. = 0.341 MILE  
NET LENGTH = 272.33 FT. = 0.052 MILE



LOCATION OF SECTION INDICATED THUS: - [shaded box] -

**DESIGN DESIGNATION & TRAFFIC DATA**

<b>I-72</b>	<b>I-72</b>
<b>INTERSTATE</b>	<b>INTERSTATE</b>
<b>SPEED LIMIT - 70 MPH</b>	<b>SPEED LIMIT - 55 MPH</b>
<b>ADT = 41,000 (2022)</b>	<b>ADT = 15,400 (2022)</b>
<b>P.V. = 71.9%</b>	<b>P.V. = 80.9%</b>
<b>S.U. = 4.0%</b>	<b>S.U. = 2.2%</b>
<b>M.U. = 24.1%</b>	<b>M.U. = 16.9%</b>



FULL SIZE PLANS HAVE BEEN PREPARED USING STANDARD ENGINEERING SCALES. REDUCED SIZED PLANS WILL NOT CONFORM TO STANDARD SCALES. IN MAKING MEASUREMENTS ON REDUCED PLANS, THE ABOVE SCALES MAY BE USED.

J.U.L.I.E.  
JOINT UTILITY LOCATION INFORMATION FOR EXCAVATORS  
1-800-892-0123  
OR 811 CHAMPAIGN TOWNSHIP

PROJECT ENGINEER: RYAN CARROLL 217-466-7225

CONTRACT NO. 70254

**VK VEENSTRA & KIMM INC.**  
Springfield, IL Phone: (217)544-8033  
IL Design Firm No. 184-001939



SIGNATURE: [Signature]  
DATE SIGNED: 01/23/2024  
LICENSE EXPIRATION DATE: 11/30/2025



SIGNATURE: [Signature]  
DATE SIGNED: 01/23/2024  
LICENSE EXPIRATION DATE: 11/30/2025



SIGNATURE: [Signature]  
DATE SIGNED: 1/23/24  
LICENSE EXPIRATION DATE: 11/30/2025

STATE OF ILLINOIS  
DEPARTMENT OF TRANSPORTATION

SUBMITTED 1/26/24  
Kensla Barnettson REGIONAL ENGINEER  
March 22, 2024 [Signature]  
ENGINEER OF DESIGN AND ENVIRONMENT  
March 22, 2024 [Signature]  
DIRECTOR OF HIGHWAYS PROJECT IMPLEMENTATION

**PRINTED BY THE AUTHORITY  
OF THE STATE OF ILLINOIS**

**INDEX OF SHEETS**

1	TITLE SHEET
2	GENERAL NOTES, COMMITMENTS AND PROJECT SPECIFIC NOTES
3-13	SUMMARY OF QUANTITIES
14	I-72 PRE-CROSSOVER CONSTRUCTION TOPSOIL REMOVAL
	TYPICAL ROADWAY SECTIONS
15-18	I-72 TYPICAL ROADWAY SECTIONS
19	I-72 CROSSOVER TYPICAL SECTIONS
20-29	SCHEDULE OF QUANTITIES
30	ALIGNMENT TIES & BENCHMARKS
31-36	I-72 PLAN & PROFILE SHEETS
37-40	RAMP PLAN AND PROFILE SHEETS
41	I-72 CROSSOVER LAYOUT PLAN
42-45	I-72 CROSSOVER PLAN AND PROFILE SHEETS
46-47	I-72 MAINTENANCE OF TRAFFIC TYPICAL SECTIONS
48	I-57 MAINTENANCE OF TRAFFIC TYPICAL SECTIONS
49-54	I-72 MAINTENANCE OF TRAFFIC - STAGE 1
55	I-57 MAINTENANCE OF TRAFFIC - STAGE 1
56	I-72 MAINTENANCE OF TRAFFIC WINTER SHUTDOWN
57-61	I-72 MAINTENANCE OF TRAFFIC - STAGE 2
62	I-57 MAINTENANCE OF TRAFFIC - STAGE 2
63	PLAN EAST CROSSOVER
64	PLAN WEST CROSSOVER
65	CROSSOVER TOPSOIL REMOVAL PLAN
66-73	I-72 MAINTENANCE OF TRAFFIC - DETOURS
74-76	WIDTH RESTRICTION SIGNING
77	I-57 GRADING AND ATTENUATOR DETAILS
78-81	RAMP INTERSECTION DETAILS
82-85	SHOULDER TAPER DETAILS AT RAMPS
86-92	EROSION CONTROL PLAN
93-99	REMOVAL PLAN
100-103	DRAINAGE DETAILS
104	BUTT JOINT DETAILS
105-107	GUARDRAIL PLAN
108-114	PAVEMENT MARKING PLAN
115-123	SIGNING PLANS
124-130	LIGHTING PLANS
131	PRE-STAGE 1 DECK REPAIR DETAILS
132-187	STRUCTURE PLANS S.N. 010-0296 & S.N. 010-0297
188-191	BRIDGE MOUNTED SIGN DETAILS
192	RUMBLE STRIP DETAIL SHEET
193-195A	DISTRICT DETAILS
196-213	I-72 PRE-CROSSOVER CONSTRUCTION TOPSOIL CROSS SECTIONS
214-240	I-72 CROSS SECTIONS
241-258	I-72 CROSSOVER CROSS SECTIONS
259-265	I-57 CROSS SECTIONS
266-270	RAMP A CROSS SECTIONS
271-275	RAMP B CROSS SECTIONS
276-282	RAMP C CROSS SECTIONS
283-290	RAMP D CROSS SECTIONS
291-300	I-72 CROSSOVER REMOVAL TYPICAL & CROSS SECTIONS

**STANDARDS**

000001-08	STANDARD SYMBOLS, ABBREVIATIONS AND PATTERNS
001001-02	AREAS OF REINFORCEMENT
001006	DECIMAL OF AN INCH AND OF A FOOT
280001-07	TEMPORARY EROSION CONTROL SYSTEMS
420401-13	PAVEMENT CONNECTOR (PCC) FOR BRIDGE APPROACH SLAB
515001-04	NAME PLATE FOR BRIDGES
542301-03	PRECAST REINFORCED CONCRETE FLARED END SECTIONS
542546-01	FLUSH INLET BOX FOR MEDIAN
601101-02	CONCRETE HEADWALLS FOR PIPE DRAINS
630001-13	STEEL PLATE BEAM GUARDRAIL
630301-09	SHOULDER WIDENING FOR TYPE 1 (SPECIAL) GUARDRAIL TERMINALS
631011-10	TRAFFIC BARRIER TERMINAL, TYPE 2
631031-18	TRAFFIC BARRIER TERMINAL, TYPE 6
642001-03	SHOULDER RUMBLE STRIPS, 16 INCH
643001-02	SAND MODULE IMPACT ATTENUATORS
701101-05	OFF-ROAD OPERATIONS, MULTILANE 15' TO 24" FROM PAVEMENT EDGE
701106-02	OFF-ROAD OPERATIONS, MULTILANE, MORE THAN 15' AWAY
701400-12	APPROACH TO LANE CLOSURE, FREEWAY/EXPRESSWAY
701401-13	LANE CLOSURE, FREEWAY/EXPRESSWAY
701402-12	LANE CLOSURE, FREEWAY/EXPRESSWAY, WITH BARRIER
701411-09	LANE CLOSURE, MULTILANE, AT ENTRANCE OR EXIT RAMP, FOR SPEEDS > 45 MPH
701416-11	LANE CLOSURE, FREEWAY/EXPRESSWAY, WITH CROSSOVER AND BARRIER
701426-09	LANE CLOSURE, MULTILANE, INTERMITTENT OF MOVING OPERATION FOR SPEEDS > 45 MPH
701428-01	TRAFFIC CONTROL SETUP AND REMOVAL FREEWAY/EXPRESSWAY
701451-05	RAMP CLOSURE FREEWAY/EXPRESSWAY
701901-09	TRAFFIC CONTROL DEVICES
704001-08	TEMPORARY CONCRETE BARRIER
720001-01	SIGN PANEL MOUNTING DETAILS
720021-03	SIGN PANELS, EXTRUDED ALUMINUM TYPE
725001-01	OBJECT AND TERMINAL MARKERS
780001-05	TYPICAL PAVEMENT MARKINGS
781001-04	TYPICAL APPLICATION RAISED REFLECTIVE PAVEMENT MARKERS
782006-01	GUARDRAIL AND BARRIER WALL REFLECTOR MOUNTING DETAILS
821101-02	LUMINAIRE WIRING IN POLE
825026-04	LIGHTING CONTROLLER, BASE MOUNTED, 480V
830006-05	LIGHTING POLE ALUMINUM DAVIT ARM
836001-04	LIGHT POLE FOUNDATION
838001-01	BREAKAWAY DEVICES

**GENERAL NOTES**

G.N. 100B  
MICROSTATION AND GEOPAK FILES OF THIS PROJECT WILL BE MADE AVAILABLE TO THE CONTRACTOR AFTER CONTRACT AWARD. IF THERE IS A CONFLICT BETWEEN THE ELECTRONIC FILES AND THE PRINTED CONTRACT PLANS AND DOCUMENTS, THE PRINTED CONTRACT PLANS AND DOCUMENTS, THE PRINTED CONTRACT PLANS SHALL TAKE PRECEDENCE OVER THE ELECTRONIC FILES. THE CONTRACTOR SHALL ACCEPT ALL RISK ASSOCIATED WITH USING THE ELECTRONIC FILES AND SHALL HOLD THE DEPARTMENT HARMLESS FOR ANY ERRORS OR OMISSIONS IN THE ELECTRONIC FILES AND THE DATA CONTAINED THEREIN. ERRORS OR DELAYS RESULTING FROM THE USE OF THE ELECTRONIC FILES BY THE CONTRACTOR SHALL NOT RESULT IN AN EXTENSION OF TIME FOR ANY INTERIM OR FINAL COMPLETION DATE OR SHALL NOT BE CONSIDERED CAUSE FOR ADDITIONAL COMPENSATION. THE CONTRACTOR SHALL NOT USE, SHARE OR DISTRIBUTE THESE ELECTRONIC FILES EXCEPT FOR THE PURPOSE OF CONSTRUCTING THIS CONTRACT. ANY CLAIMS BY THIRD PARTIES DUE TO THE USE OR ERRORS SHALL BE THE SOLE RESPONSIBILITY OF THE CONTRACTOR. THE CONTRACTOR SHALL INCLUDE THIS DISCLAIMER WITH THE TRANSFER OF THESE ELECTRONIC FILES TO ANY OTHER PARTIES AND SHALL INCLUDE APPROPRIATE LANGUAGE BINDING THEM TO SIMILAR RESPONSIBILITIES.

G.N. 105.09A  
ALL ELEVATIONS SHOWN IN THE PLANS ARE BASED ON NORTH AMERICAN VERTICAL DATUM OF 1988. (NAVD 88).

G.N. 201  
TREES THAT INTERFERE WITH THE CONSTRUCTION OPERATIONS SHALL BE REMOVED AS DIRECTED BY THE ENGINEER. ANY TREE DUE TO ITS LOCATION AND DEEMED SUITABLE FOR SAVING BY THE ENGINEER SHALL BE PROTECTED DURING CLEARING AND SUBSEQUENT CONSTRUCTION OPERATIONS.

G.N. 406S

**PROJECT POSTED SPEED LIMITS**

THE FOLLOWING TABLE IS A LISTING OF POSTED SPEED LIMITS WITHIN THE PROJECT LIMITS. THE ENGINEER SHALL FIELD VERIFY THESE LIMITS:

RTE.	STATION TO	STATION	POSTED SPEED LIMIT (MPH)
I-72	1952+00	1970+00	55 MPH
I-57	478+00	482+00	70 MPH

G.N. 542.07  
AT LOCATIONS WHERE END SECTIONS ARE SPECIFIED, CAST IN PLACE CONCRETE HEADWALLS WILL NOT BE ALLOWED.

G.N. 781  
THE FINAL PAVEMENT MARKINGS SHALL BE IN PLACE PRIOR TO PLACING THE RAISED REFLECTIVE PAVEMENT MARKERS.

FACTORS USED FOR ESTIMATING PLAN QUANTITIES ARE AS FOLLOWS AND SHALL NOT BE USED FOR THE BASIS OF FINAL QUANTITIES:

ALL AGGREGATE MATERIAL	1.9 TON/CU. YD.
ALL HOT-MIX ASPHALT	112 LB/INCH/SQ. YD.
BITUMINOUS MATERIALS (PRIME COAT)	0.25 LB/SQ. FT.
BITUMINOUS MATERIALS (TACK COAT)	0.05 LB/SQ. FT.

GN 406H

LOCATIONS	SHOULDERS FOR STAGE TRAFFIC 2-WAY EB	SHOULDERS FOR STAGE TRAFFIC 2-WAY WB	CROSSOVERS	CROSSOVERS	CROSSOVER SHOULDERS
MIXTURE USE(S):	POLYMERIZED 1.5" SURFACE COURSE	POLYMERIZED 2.25" BINDER COURSE	"9.25" BINDER DEPTH IN MEDIAN"	"POLYMERIZED 1.5" SURFACE COURSE IN MEDIAN"	"10.75" MEDIAN SHOULDERS (BOTTOM 9.25)"
AC/PG:	SBS PG 70-22	SBS PG 70-22	SBS PG 64-22	SBS PG 70-22	SBS PG 64-22
ABR % (Max):	ARTICLE 1031.06(c)	ARTICLE 1031.06(c)	ARTICLE 1031.06(c)	ARTICLE 1031.06(c)	ARTICLE 1031.06(c)
DESIGN AIR VOIDS:	4.0 %, 70 GYRATION DESIGN	4.0 %, 70 GYRATION DESIGN	4.0 %, 70 GYRATION DESIGN	4.0 %, 70 GYRATION DESIGN	4.0 %, 50 GYRATION DESIGN
MIXTURE COMPOSITION (GRADATION MIXTURE)	IL-9.5	IL-19.0	IL-19.0	IL-9.5	IL-19.0
FRICTION AGGREGATE:	MIX C	NONE	NONE	MIX C	NONE
MIXTURE WEIGHT:	112 LBS./SQ. YD./IN.	112 LBS./SQ. YD./IN.	112 LBS./SQ. YD./IN.	112 LBS./SQ. YD./IN.	112 LBS./SQ. YD./IN.
QUALITY MANAGEMENT PROGRAM:	QCQA	QCQA	QCQA	QCQA	QCQA
SUBLOT SIZE:	3000	3000	3000	3000	3000

LOCATIONS	CROSSOVER SHOULDERS	I-72 MAINLINE	I-72 MAINLINE	I-72 MAINLINE SHOULDERS	I-72 MAINLINE SHOULDERS
MIXTURE USE(S):	"10.75" MEDIAN SHOULDERS (TOP 1.5)"	"POLYMERIZED 1.5" SURFACE COURSE"	VARIABLE DEPTH BINDER COURSE (MINIMUM 2.25")	10" SHOULDERS (BOTTOM 8.5") (3 LIFTS)	10" SHOULDERS (TOP 1.5")
AC/PG:	SBS PG 64-22	SBS PG 70-22	SBS PG 70-22	SBS PG 64-22	SBS PG 64-22
ABR % (Max):	ARTICLE 1031.06(c)	ARTICLE 1031.06(c)	ARTICLE 1031.06(c)	ARTICLE 1031.06(c)	ARTICLE 1031.06(c)
DESIGN AIR VOIDS:	4.0 %, 50 GYRATION DESIGN	4.0 %, 90 GYRATION DESIGN	4.0 %, 70 GYRATION DESIGN	4.0 %, 50 GYRATION DESIGN	4.0 %, 50 GYRATION DESIGN
MIXTURE COMPOSITION (GRADATION MIXTURE)	IL-9.5	IL-9.5	IL-19.0	IL-19.0	IL-9.5
FRICTION AGGREGATE:	MIX C	MIX E	NONE	NONE	MIX C
MIXTURE WEIGHT:	112 LBS./SQ. YD./IN.	112 LBS./SQ. YD./IN.	112 LBS./SQ. YD./IN.	112 LBS./SQ. YD./IN.	112 LBS./SQ. YD./IN.
QUALITY MANAGEMENT PROGRAM:	QCQA	QCP	QCP	QCQA	QCQA
SUBLOT SIZE:	3000	1000	1000	3000	3000

MODEL & SHEET NAMES  
FILE NAMES & SHEETS



USER NAME = \$USERS	DESIGNED -	REVISED -
	DRAWN -	REVISED -
PLOT SCALE = \$SCALES	CHECKED -	REVISED -
PLOT DATE = \$DATES	DATE -	REVISED -

**STATE OF ILLINOIS  
DEPARTMENT OF TRANSPORTATION**

**GENERAL NOTES, COMMITMENTS & PROJECT SPECIFIC NOTES**

SCALE: SHEET 1 OF 1 SHEETS STA. TO STA.

F.A.I. RTE.	SECTION	COUNTY	TOTAL SHEETS	SHEET NO.
72	(10-33HB-2)BR	CHAMPAIGN	300	2
CONTRACT NO. 70254				
ILLINOIS FED. AID PROJECT				

GROUND MOUNTED SIGNING					
LOCATION	72000200 SIGN PANEL - TYPE 2	72400320 REMOVE SIGN PANEL - TYPE 2	72700200 TUBULAR STEEL SIGN SUPPORT- BREAKAWAY	73400100 CONCRETE FOUNDATIONS	73700100 REMOVE GROUND MOUNTED SIGN SUPPORT
	SQ. FT.	SQ. FT.	POUND	CU. YD.	EACH
<b>I-72 EASTBOUND</b>					
STA. 1956+91 30' RT. (W4-1) MERGE SIGN	16	16	127.8	0.7	1
STA. 1959+28 46' RT. (W13-3) 30 MPH ON POLE	12	12			
STA. 1964+19 48' RT. (W13-3) 30 MPH ON POLE	12	12			
STA. 1965+73 36' RT. (E5-1bP) EXIT 182B	15	15	390.5	1.4	2
<b>I-72 WESTBOUND</b>					
STA. 1955+78 36' LT. (E5-1bP) EXIT 182A	15	15	390.5	1.4	2
STA. 1959+13 40' LT. (W13-3) 30 MPH ON POLE	12	12			
STA. 1962+11 43' LT. (W13-3) 30 MPH ON POLE	12	12			
STA. 1964+41 30' LT. (W4-1) MERGE SIGN	16	16	127.8	0.7	1
<b>TOTAL</b>	<b>110</b>	<b>110</b>	<b>1036.6</b>	<b>4.2</b>	<b>6</b>

USE 1037 POUNDS

TEMPORARY GUARDRAIL AND TERMINALS							
LOCATION	SIDE	70500100	X7050167	70500665	78200006		
		TEMPORARY STEEL PLATE BEAM GUARDRAIL, TYPE A	TEMPORARY TRAFFIC BARRIER TERMINAL, TYPE 1 SPECIAL (TANGENT)	TEMPORARY TRAFFIC BARRIER TERMINAL, TYPE 6	GUARDRAIL REFLECTORS, TYPE B	FOOT	EACH
STATION	TO	STATION					
STAGE 1							
1962+00	TO	1965+37	RT	250	1	1	4
STAGE 2							
1956+03	TO	1959+41	LT	250	1	1	4
<b>TOTAL</b>				<b>500</b>	<b>2</b>	<b>2</b>	<b>8</b>
<b>USE</b>				<b>500</b>	<b>2</b>	<b>2</b>	<b>8</b>

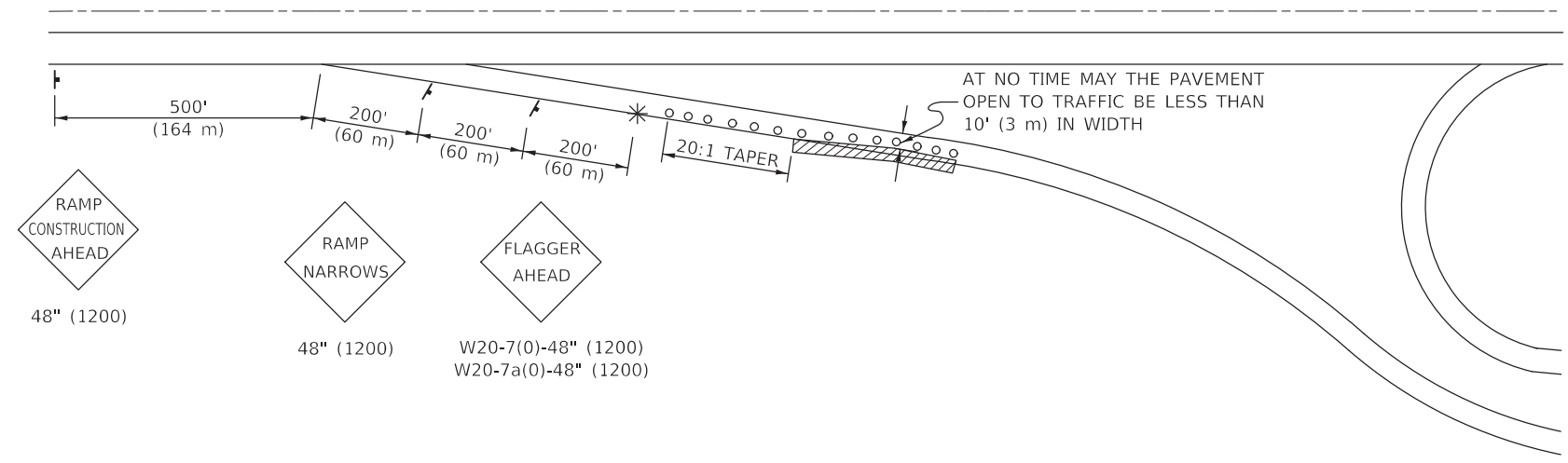
OVERHEAD SIGNING						
LOCATION	73301840	73302170	73600200	73602000	73400200	73304000
	OVERHEAD SIGN STRUCTURE WALKWAY, CANTILEVER, TYPE A	OVERHEAD SIGN STRUCTURE CANTILEVER, TYPE III-C-A (36" X 5'-6")	REMOVE OVERHEAD SIGN STRUCTURE- CANTILEVER	REMOVE OVERHEAD SIGN STRUCTURE- BRIDGE MOUNTED	DRILLED SHAFT CONCRETE FOUNDATIONS	OVERHEAD SIGN STRUCTURE- BRIDGE MOUNTED
	FOOT	FOOT	EACH	EACH	CU. YD.	FOOT
<b>I-72 EASTBOUND</b>						
STA. 1962+60 42' RT.	22	30			8.6	
STA. 1962+55 45' RT.			1			
STA. 1961+21 32' RT. EXIT 235B SIGN				1		20
<b>I-72 WESTBOUND</b>						
STA. 1958+80 42' LT.	22	30			8.6	
STA. 1958+85 41' LT.			1			
STA. 1960+19 32' LT. EXIT 235A SIGN				1		19
<b>TOTAL</b>	<b>44</b>	<b>60</b>	<b>2</b>	<b>2</b>	<b>17.2</b>	<b>39</b>

67000400 ENGINEER'S FIELD OFFICE	
LOCATION	ENGINEER'S FIELD OFFICE
STA. 1952+00 TO STA. 1970+00 I-72 OVER I-57	CAL MO 36
<b>TOTAL</b>	<b>36</b>

70103815 TRAFFIC CONTROL AND SURVEILLANCE	
LOCATION	TRAFFIC CONTROL AND SURVEILLANCE
STA. 1917+00 TO STA. 2004+00 (2 YEARS)	CAL DA 428
<b>TOTAL</b>	<b>428</b>

TEMPORARY CONCRETE BARRIER AND MODULAR GLARE SCREEN							
LOCATION	70400100	70400200	63800920	78200011	70600251	70600352	REMARKS
	TEMPORARY CONCRETE BARRIER	RELOCATE CONCRETE BARRIER	MODULAR GLARE SCREEN SYSTEM TEMPORARY	BARRIER WALL REFLECTORS, TYPE C	IMPACT ATTENUATORS, TEMPORARY (NON-REDIRECTIVE, NARROW, TL 3	IMPACT ATTENUATORS, RELOCATE (NON-REDIRECTIVE, NARROW, TL 3	
STATION	TO	STATION	FOOT	FOOT	FOOT	EACH	EACH
STAGE 1							
109+90	TO	115+50	562.5	562.5	23		WEST CROSSOVER
1931+41	TO	1993+31	6200.0	6200.0	248		I-72 MAINLINE ALIGNMENT
1993+31	TO	1996+19	300.0	300.0	12		I-72 WB ALIGNMENT
479+22	TO	482+72	350.0		14	1	I-57 NB RIGHT SHOULDER
480+50	TO	483+13	262.5		11	1	I-57 NB LEFT SHOULDER
480+30	TO	483+17	287.5		12	1	I-57 SB RIGHT SHOULDER
481+00	TO	484+00	312.5		13	1	I-57 SB LEFT SHOULDER
STAGE 2							
478+97	TO	482+22	325.0		13	1	I-57 NB RIGHT SHOULDER
479+22	TO	482+22	300.0		12	1	I-57 NB LEFT SHOULDER
479+71	TO	482+96	325.0		13	1	I-57 SB RIGHT SHOULDER
480+05	TO	483+17	312.5		13	1	I-57 SB LEFT SHOULDER
1924+08	TO	1929+00	500.0	500.0	20		I-72 EB
1929+00	TO	1990+50	6150.0	6150.0	246		I-72 EB
301+00	TO	304+55	362.5	362.5	15		EAST CROSSOVER
<b>TOTAL</b>			<b>8275.0</b>	<b>8275.0</b>	<b>14075</b>	<b>4</b>	<b>4</b>

**APPLICATION NO. 1**  
DAY OPERATION ONLY  
PARTIAL RAMP CLOSURE



**SYMBOLS**

- (APPLICATION NO. 1) TYPE I OR II BARRICADES OR DRUMS @ 50' (15 m) CTS.
- ⊗ (APPLICATION NO. 2) TYPE I OR II BARRICADES OR DRUMS @ 25' (7.5 m) CTS. W/STEADY BURNING LIGHTS
- \* (APPLICATION NO. 1) FLAGGER PLACED AS DIRECTED BY THE ENGINEER
- † SIGN ON PORTABLE OR PERMANENT SUPPORT
- ▨ WORK AREA

**TYPICAL APPLICATIONS**

- PAVEMENT PATCHING
- PIPE UNDERDRAINS
- HMA RESURFACING

**GENERAL NOTES**

CONSTRUCTION OPERATIONS SHALL BE CONFINED TO AN AREA NARROW ENOUGH THAT A MINIMUM OF 10' (3 m) OF PAVEMENT SHALL BE OPEN TO TRAFFIC AT ALL TIMES.

FULL WIDTH PAVEMENT ON THE RAMPS SHALL BE OPEN TO TRAFFIC AT NIGHT.

WHEN NO WORK IS BEING PERFORMED, THE FLAGGER WILL NOT BE REQUIRED. IF THE FLAGGER IS NOT PRESENT, THE FLAGGER SIGNS SHALL BE REMOVED OR COVERED.

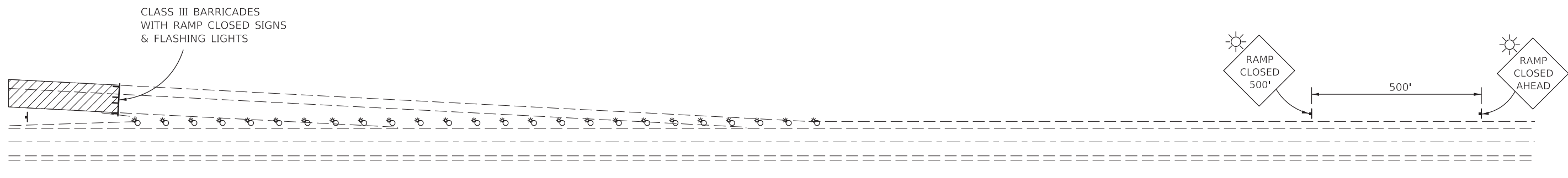
ALL SIGNS SHALL BE POST MOUNTED IF WORK IN THE AREA EXCEEDS FOUR DAYS OF DAYTIME OPERATIONS.

LONGITUDINAL DIMENSIONS MAY BE ADJUSTED SLIGHTLY TO FIT FIELD CONDITIONS.

ALL VEHICLES, EQUIPMENT, WORKERS (EXCEPT FLAGGER) AND THEIR ACTIVITIES ARE RESTRICTED AT ALL TIMES TO ONE SIDE OF THE PAVEMENT UNLESS OTHERWISE AUTHORIZED BY THE DISTRICT ENGINEER.

TRAFFIC CONTROL FOR ALL RAMPS SHALL BE IN ACCORDANCE WITH THE APPROPRIATE APPLICATION OF PLAN DETAIL TRAFFIC CONTROL FOR RAMPS AND WILL NOT BE PAID FOR SEPARATELY, BUT SHALL BE INCLUDED IN THE CONTRACT LUMP SUM PRICES FOR TRAFFIC CONTROL AND PROTECTION, STANDARD 701401 AND TRAFFIC CONTROL AND PROTECTION, STANDARD 701406.

**APPLICATION NO. 2**  
RAMP CLOSURE



**GENERAL NOTES**

STEADY BURN LIGHTS ARE NOT REQUIRED FOR DAYTIME OPERATIONS.

CONTACT THE DISTRICT TRAFFIC OPERATIONS ENGINEER AT 217-465-4181, ONE WEEK PRIOR TO CLOSING THE RAMP.

Note: All dimensions are in INCHES (millimeters) unless otherwise shown.

MODEL: 41002ELN.MXD  
FILE NAME: P:\1100\BIDDING\NTEC\Illinois\pwr\DOT\Documents\DOT Office\District 5 Standards\District 5 Details\New Fonts and Annotations\70103710.dgn

USER NAME = piersonbr	DESIGNED -	REVISED - 11/06
PLOT SCALE = 40.0000 ' / in.	DRAWN -	REVISED -
PLOT DATE = 3/12/2018	CHECKED -	REVISED -
	DATE -	REVISED -

**STATE OF ILLINOIS  
DEPARTMENT OF TRANSPORTATION**

**TRAFFIC CONTROL FOR RAMPS**

SCALE: SHEET 1 OF 1 SHEETS STA. TO STA.

**DISTRICT 5 DETAIL NO. 70103710**

F.A.I. RTE.	SECTION	COUNTY	TOTAL SHEETS	SHEET NO.
72	(10-33HB-2)BR	CHAMPAIGN	300	195A
CONTRACT NO. 70254				