

STATE OF ILLINOIS
DEPARTMENT OF TRANSPORTATION

F.A.S. RTE.	SECTION	COUNTY	TOTAL SHEETS	SHEET NO.
723	17DR	MONTGOMERY	12	1
		ILLINOIS	CONTRACT NO. 72725	

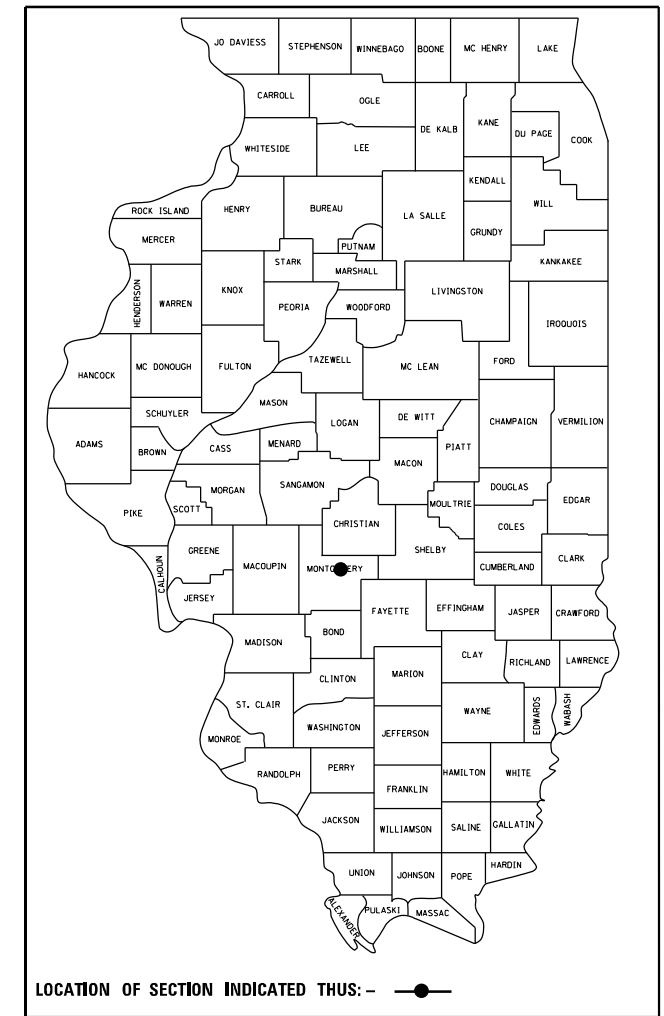
FOR INDEX OF SHEETS, SEE SHEET NO. 2

PROPOSED IMPROVEMENTS

FAS 723 (NOKOMIS BLACKTOP)
SECTION 17DR
REPLACE CMP CULVERT

MONTGOMERY CO.
C-96-023-24

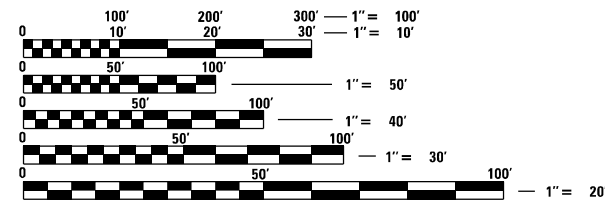
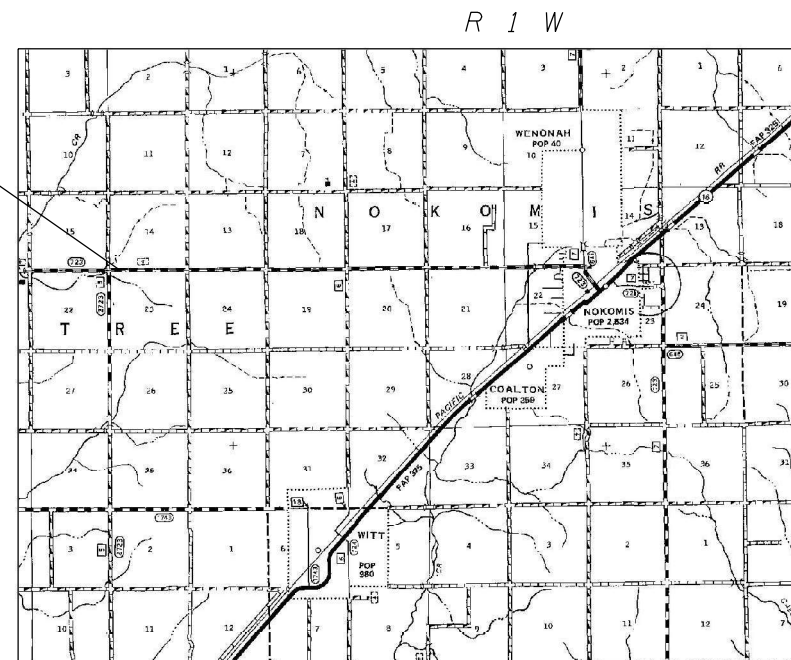
D-96-007-24



ADT = 700
SU = 40
MU = 50



PROJECT LOCATION
STA. 423+65.00



FULL SIZE PLANS HAVE BEEN PREPARED USING STANDARD ENGINEERING SCALES, REDUCED SIZED PLANS WILL NOT CONFORM TO STANDARD SCALES. IN MAKING MEASUREMENTS ON REDUCED PLANS, THE ABOVE SCALES MAY BE USED.

J.U.L.I.E.
JOINT UTILITY LOCATION INFORMATION FOR EXCAVATION
1-800-892-0123
OR 811

PROJECT ENGINEER : MIKE HAMBY - (217)524-7765
PROJECT MANAGER : TIM SHARP - (217)524-9160

CONTRACT NO. 72725

STATE OF ILLINOIS
DEPARTMENT OF TRANSPORTATION

SUBMITTED February 2, 2024

John P. Meyer
REGION FOUR ENGINEER

March 22, 2024
Scott A. Etkin
ENGINEER OF DESIGN AND ENVIRONMENT

March 22, 2024
Stephen M. Smith
DIRECTOR OF HIGHWAYS PROJECT IMPLEMENTATION

PRINTED BY THE AUTHORITY
OF THE STATE OF ILLINOIS

INDEX

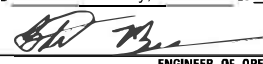
SHEET NO.	DESCRIPTION
1.	COVER SHEET
2.	INDEX, STANDARDS, SIGNATURES
3.	SUMMARY OF QUANTITIES
4.	LOCATION MAP
5.	PLAN AND PROFILE
6.	DETAIL
7.	DETOUR MAP
8-12.	DETOUR DETAILS

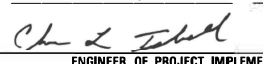
STANDARDS


STANDARD NO.	DESCRIPTION
000001-08	STANDARD SYMBOLS, ABBREVIATIONS AND PATTERNS
001006	DECIMAL OF AN INCH AND OF A FOOT
442201-03	CLASS C AND D PATCHES
542001-06	CONCRETE END SECTIONS FOR PIPE CULVERTS 15" THRU 84" DIA.
701001-02	OFF-RD OPERATIONS, 2L, 2W, MORE THAN 15' AWAY
701006-05	OFF-RD OPERATIONS, 2L, 2W, 15' TO 24" FROM EDGE OF PAVEMENT
701201-05	LANE CLOSURE, 2L, 2W, DAY ONLY, FOR SPEEDS > 45 MPH TRAFFIC
701901-09	CONTROL DEVICES
B.L.R. 21-9	TYPICAL APPLICATION OF TRAFFIC CONTROL DEVICES FOR CONSTRUCTION ON RURAL LOCAL HIGHWAYS

MIXTURE REQUIREMENTS	
MIXTURE USE(S):	PATCHING
PG:	PG 64-22
DESIGN AIR VOIDS:	4.0% @ N50
MIXTURE COMPOSITION:	IL-19.0
FRICTION AGGREGATE:	N/A
QUALITY MANAGEMENT:	QC/QA
SUBLOT SIZE:	N/A
MTD REQUIRED:	NO

**STATE OF ILLINOIS
DEPARTMENT OF TRANSPORTATION
DIVISION OF HIGHWAYS
DISTRICT 6**

EXAMINED February, 9 20 24

 ENGINEER OF OPERATIONS

EXAMINED February, 9 20 24

 ENGINEER OF PROJECT IMPLEMENTATION

EXAMINED February, 9 20 24

 ENGINEER OF PROGRAM DEVELOPMENT

REV. - MS

0-02178-6022
 CONSTR. CODE
 100% STATE
 MONTGOMERY
 PIPE CULVERT
 0004
 RURAL

CODE NO.	ITEM	UNIT	TOTAL QUANTITY	
20800150	TRENCH BACKFILL	CU YD	180	180
44200162	PAVEMENT PATCHING, TYPE IV, 13 INCH	SQ YD	47	47
48101200	AGGREGATE SHOULDERS, TYPE B	TON	6	6
50105220	PIPE CULVERT REMOVAL	FOOT	66	66
542A1069	PIPE CULVERTS, CLASS A, TYPE 2 24"	FOOT	66	66
54215424	CAST-IN-PLACE REINFORCED CONCRETE END SECTIONS 24"	EACH	2	2
67100100	MOBILIZATION	L SUM	1	1
70107025	CHANGEABLE MESSAGE SIGN	CAL DA	30	30
70100450	TRAFFIC CONTROL AND PROTECTION, STANDARD 701201	L SUM	1	1
X7011800	TRAFFIC CONTROL AND PROTECTION, STANDARD BLR 21	L SUM	1	1
Z0016702	DETOUR SIGNING	L SUM	1	1

MODEL: D:\64518
 FILE NAME: S:\CONTRACTS\CDOT\72725 - FAS 723 (INDICHS BLACKTOP) - DRAINAGE - MONTGOMERY CO (4-26-2024)\PLANS\72725-DR-3-500.dgn

REV. - MS

USER NAME = Timothy.Sharp	DESIGNED - _____	REVISED - _____
	DRAWN - _____	REVISED - _____
PLOT SCALE = 1.0000' / in.	CHECKED - _____	REVISED - _____
PLOT DATE = 2/2/2024	DATE - _____	REVISED - _____

**STATE OF ILLINOIS
 DEPARTMENT OF TRANSPORTATION**

SUMMARY OF QUANTITIES

SCALE: _____ SHEET ___ OF ___ SHEETS STA. _____ TO STA. _____

F.A.S. RTE.	SECTION	COUNTY	TOTAL SHEETS	SHEET NO.
723	17DR	MONTGOMERY	12	3
			CONTRACT NO. 72725	
ILLINOIS FED. AID PROJECT				



PROJECT
LOCATION
STA. 423+65.00

MODEL: D:\dtp\h...
 FILE NAME: S:\CONTRACT\MAINT_CAD\72725 - FAS 723 (NOKOMIS BLACKTOP) - DRAINAGE - MONTGOMERY CO (4-26-2024)\PLANS\72725-shr-Location_map.dgn

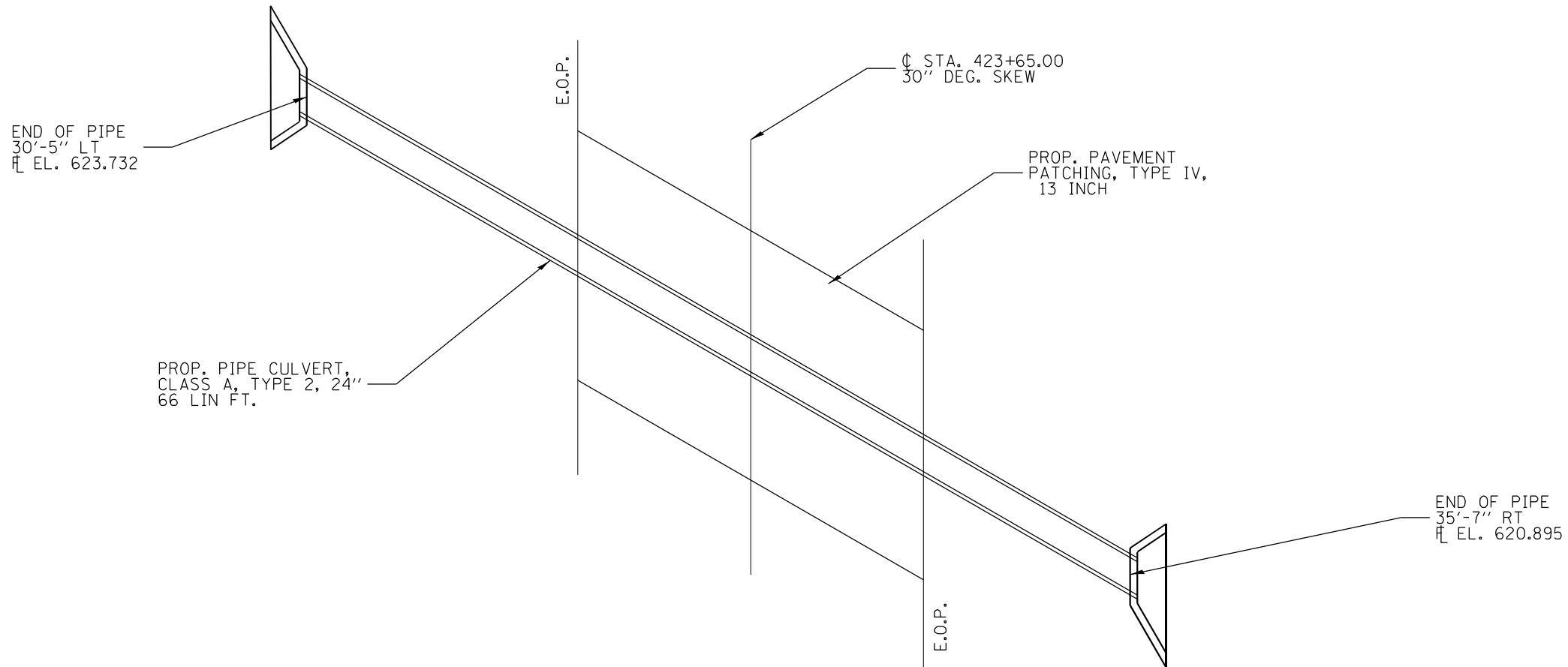
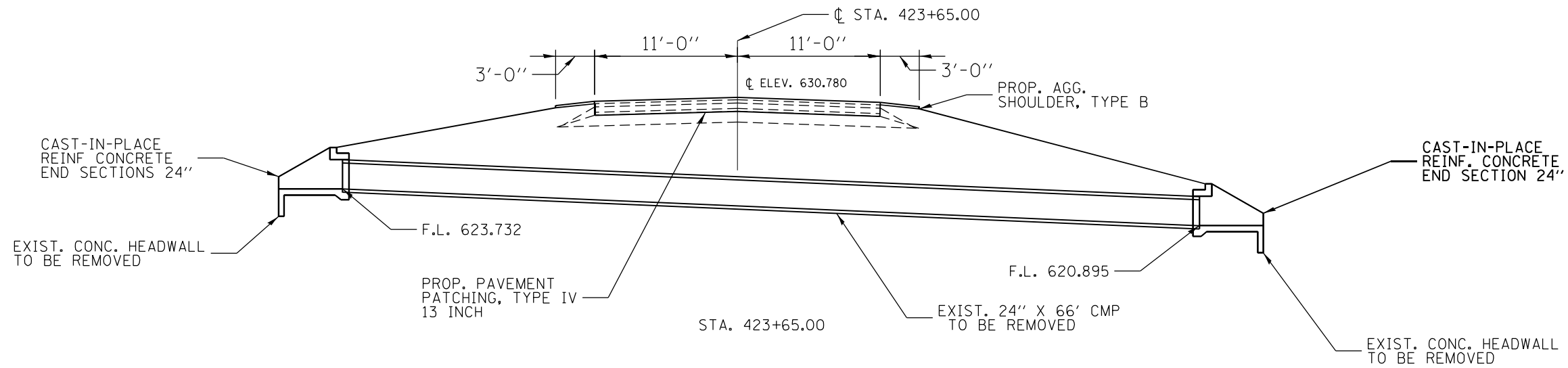
USER NAME = Timothy,Sharp	DESIGNED - _____	REVISED - _____
	DRAWN - _____	REVISED - _____
PLOT SCALE = 1,0000' / in.	CHECKED - _____	REVISED - _____
PLOT DATE = 2/2/2024	DATE - _____	REVISED - _____

**STATE OF ILLINOIS
DEPARTMENT OF TRANSPORTATION**

LOCATION MAP

SCALE: _____ SHEET ____ OF ____ SHEETS STA. _____ TO STA. _____

F.A.S. RTE.	SECTION	COUNTY	TOTAL SHEETS	SHEET NO.
723	17DR	MONTGOMERY	12	4
CONTRACT NO. 72725				
ILLINOIS FED. AID PROJECT				

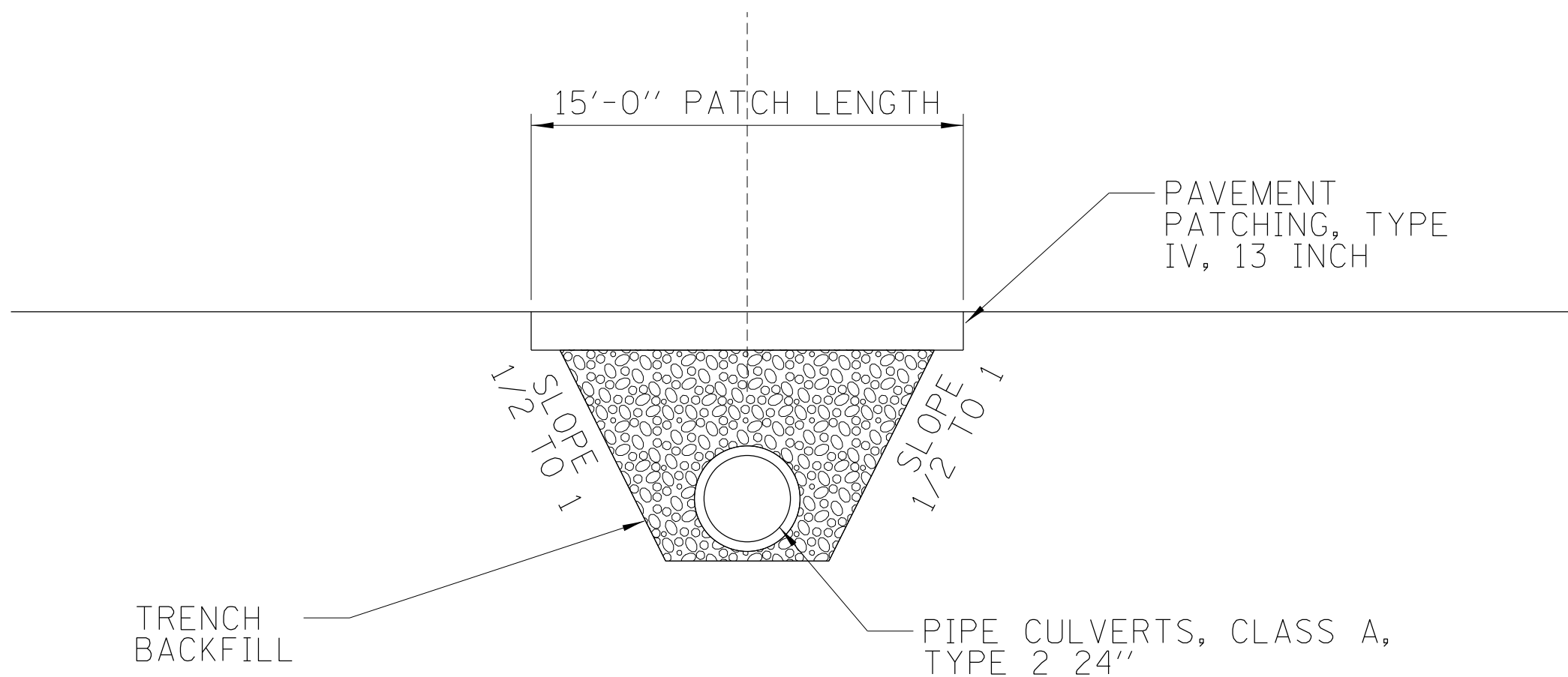


FILE NAME =	USER NAME = Timothy.Sharp	DESIGNED -	REVISED -
S:\CONTRMINT_CAD\72725 - FAS 723 (NOKO)	MIS BLACKTOP) - DRAINAGE - MONTGOMERY CO (4	DRAWN -	REVISED -
Default	PLOT SCALE = 10.0000' / in.	CHECKED -	REVISED -
	PLOT DATE = 2/2/2024	DATE -	REVISED -

**STATE OF ILLINOIS
DEPARTMENT OF TRANSPORTATION**

TYPICALS	
SCALE: _____	SHEET ____ OF ____ SHEETS
STA. _____	TO STA. _____

F.A.S. RTE.	SECTION	COUNTY	TOTAL SHEETS	SHEET NO.
723	17DR	MONTGOMERY	12	5
CONTRACT NO. 72725				
ILLINOIS FED. AID PROJECT				

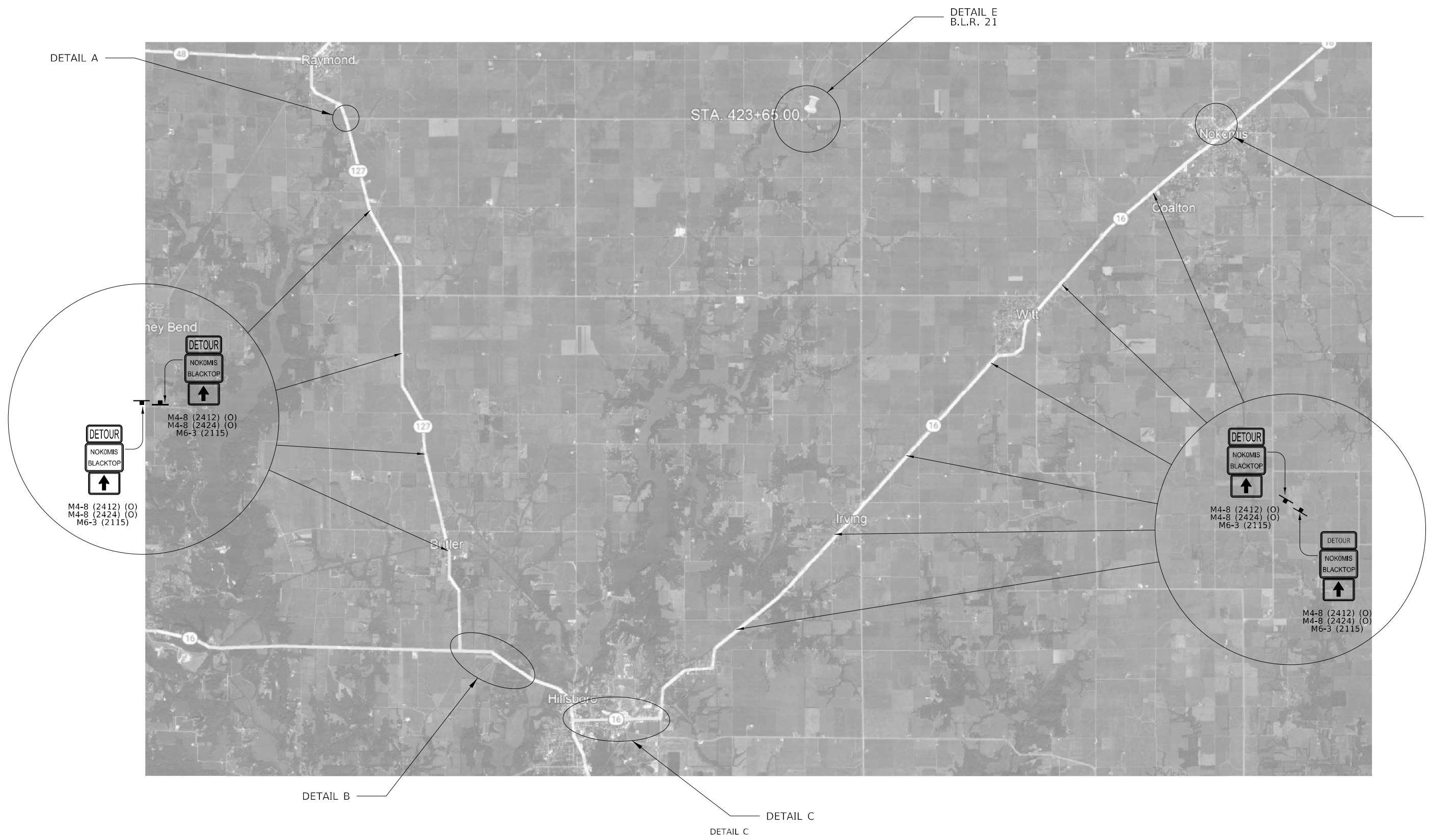


FILE NAME =	USER NAME = Timothy.Sharp	DESIGNED - EK	REVISED -
S:\CONTRMAINT_CAD\72725 - FAS 723 (NOKO	MIS BLACKTOP) - DRAINAGE - MONTGOMERY CO (4	DRAWN - EK	REVISED -
Default	PLOT SCALE = 5.0000' / in.	CHECKED - JM	REVISED -
	PLOT DATE = 2/2/2024	DATE -	REVISED -

**STATE OF ILLINOIS
DEPARTMENT OF TRANSPORTATION**

DETAIL	
SCALE: NTS	SHEET 12 OF 13 SHEETS STA. TO STA.

F.A.S. RTE.	SECTION	COUNTY	TOTAL SHEETS	SHEET NO.
723	17DR	MONTGOMERY	12	6
CONTRACT NO. 72725			ILLINOIS FED. AID PROJECT	



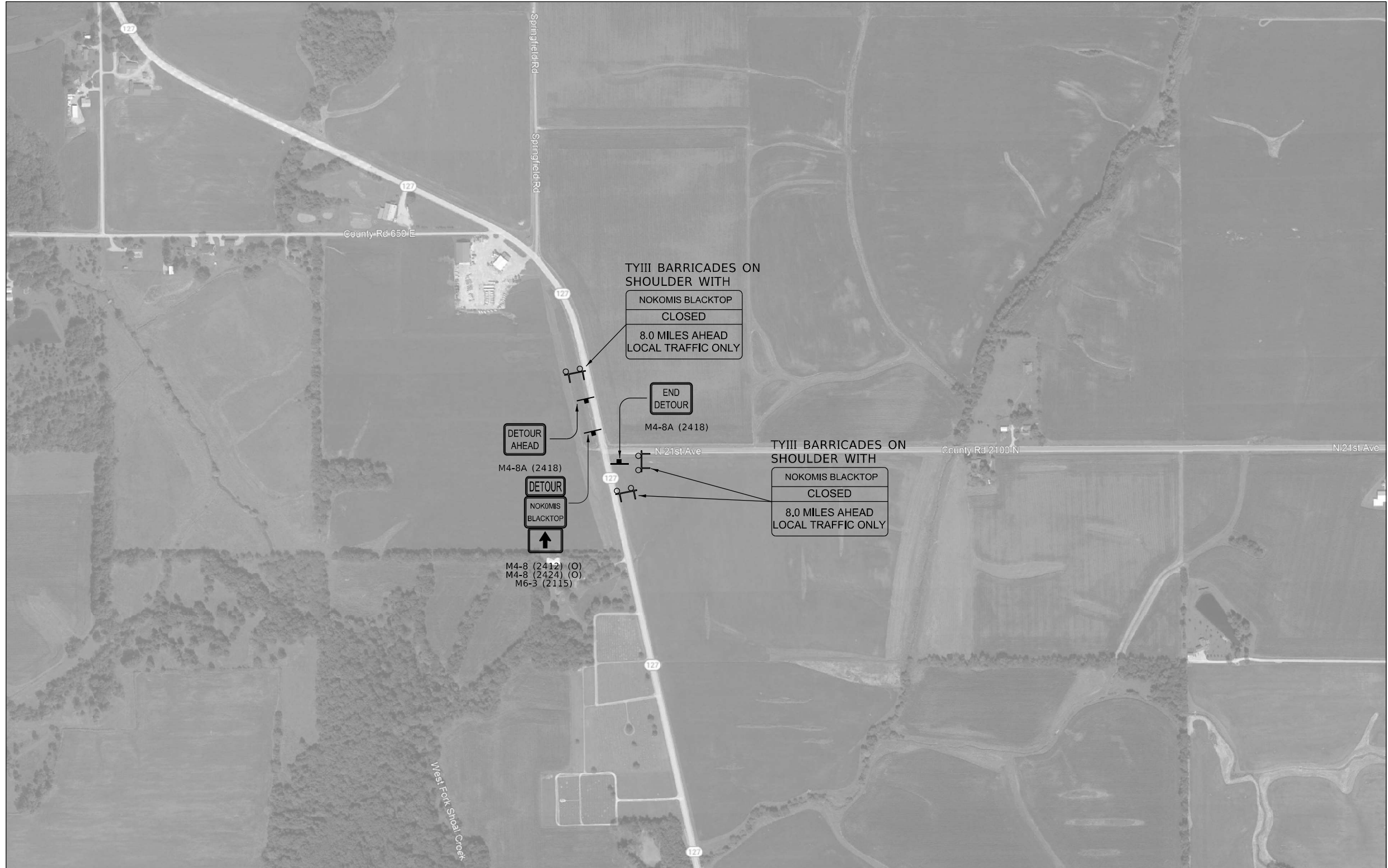
MODEL: D:\p\h\p\...
 FILE NAME: S:\CONTRACTS\...
 FAS 723 (NOKOMIS BLACKTOP) - DRAINAGE - MONTGOMERY CO (4-26-2024)\PLANS\72725-drt-12-detour_details.dgn

USER NAME = Timothy,Sharp	DESIGNED - _____	REVISED - _____
DRAWN - _____	REVISIONS - _____	REVISIONS - _____
PLOT SCALE = 100,000' / in.	CHECKED - _____	REVISIONS - _____
PLOT DATE = 2/2/2024	DATE - _____	REVISIONS - _____

STATE OF ILLINOIS
DEPARTMENT OF TRANSPORTATION

DETOUR ROUTE PLAN			
SCALE: _____	SHEET _____	OF _____	SHEETS
STA. _____	TO STA. _____		

F.A.S. RTE. 723	SECTION 17DR	COUNTY MONTGOMERY	TOTAL SHEETS 12	SHEET NO. 7
CONTRACT NO. 72725				
ILLINOIS FED. AID PROJECT				



MODEL Path: \\s:\CONTRACTS\72725 - FAS 723 (NOKOMIS BLACKTOP) - DRAINAGE - MONTGOMERY CO (4-26-2024)\PLANS\72725-shr-1-12-detour_details.dgn
 FILE NAME: S:\CONTRACTS\72725 - FAS 723 (NOKOMIS BLACKTOP) - DRAINAGE - MONTGOMERY CO (4-26-2024)\PLANS\72725-shr-1-12-detour_details.dgn

USER NAME = Timothy,Sharp	DESIGNED - _____	REVISED - _____
	DRAWN - _____	REVISED - _____
PLOT SCALE = 100,0000' / in.	CHECKED - _____	REVISED - _____
PLOT DATE = 2/2/2024	DATE - _____	REVISED - _____

STATE OF ILLINOIS
DEPARTMENT OF TRANSPORTATION

DETAIL A	
SCALE: _____	SHEET ____ OF ____ SHEETS STA. _____ TO STA. _____

F.A.S. RTE. 723	SECTION 17DR	COUNTY MONTGOMERY	TOTAL SHEETS 12	SHEET NO. 8
CONTRACT NO. 72725				
ILLINOIS FED. AID PROJECT				



MODEL Path: \\...
 FILE NAME: S:\CONTRACT\MAINT_CAD\72725 - FAS 723 (NOKOMIS BLACKTOP) - DRAINAGE - MONTGOMERY CO (4-26-2024)\PLANS\72725-shr-1-12-detour_details.dgn

USER NAME = Timothy,Sharp	DESIGNED - _____	REVISED - _____
	DRAWN - _____	REVISED - _____
PLOT SCALE = 100,0000' / in.	CHECKED - _____	REVISED - _____
PLOT DATE = 2/2/2024	DATE - _____	REVISED - _____

STATE OF ILLINOIS
DEPARTMENT OF TRANSPORTATION

DETAIL B	
SCALE: _____	SHEET ____ OF ____ SHEETS
STA: _____	TO STA: _____

F.A.S. RTE.	SECTION	COUNTY	TOTAL SHEETS	SHEET NO.
723	17DR	MONTGOMERY	12	9
CONTRACT NO. 72725				
ILLINOIS FED. AID PROJECT				



MODEL: D:\info\...
 FILE NAME: S:\CONTRACT\...
 FAS 723 (NOKOMIS BLACKTOP) - DRAINAGE - MONTGOMERY CO. (4-26-2024)\PLAN\ANSI\72725-shr-1-12-detour.dwg

USER NAME = Timothy.Sharp	DESIGNED - _____	REVISED - _____
DRAWN - _____	REVISED - _____	REVISED - _____
PLOT SCALE = 100,0000' / in.	CHECKED - _____	REVISED - _____
PLOT DATE = 2/2/2024	DATE - _____	REVISED - _____

STATE OF ILLINOIS
DEPARTMENT OF TRANSPORTATION

SCALE: _____		SHEET _____ OF _____ SHEETS		STA. _____ TO STA. _____	
		<p align="center">DETAIL C</p>			

F.A.S. RTE. 723	SECTION 17DR	COUNTY MONTGOMERY	TOTAL SHEETS 12	SHEET NO. 10
CONTRACT NO. 72725				
ILLINOIS FED. AID PROJECT				



MODEL: D:\p\h\p\...
 FILE NAME: S:\CONTRACT\MAINT_CAD\72725 - FAS 723 (MONTGOMERY CO. (4-26-2024))\PLANS\72725-shr-1-12-dreour_detail.egp

USER NAME = Timothy,Sharp	DESIGNED - _____	REVISED - _____
	DRAWN - _____	REVISED - _____
PLOT SCALE = 100,0000' / in.	CHECKED - _____	REVISED - _____
PLOT DATE = 2/2/2024	DATE - _____	REVISED - _____

STATE OF ILLINOIS
DEPARTMENT OF TRANSPORTATION

DETAIL E

SCALE: _____ SHEET ____ OF ____ SHEETS STA. _____ TO STA. _____

F.A.S. RTE.	SECTION	COUNTY	TOTAL SHEETS	SHEET NO.
723	17DR	MONTGOMERY	12	12
CONTRACT NO. 72725				
ILLINOIS FED. AID PROJECT				