

STATE OF ILLINOIS
DEPARTMENT OF TRANSPORTATION

F.A.U. RTE.	SECTION	COUNTY	TOTAL SHEETS	SHEET NO.
9293	131RS-3	ST. CLAIR	8	1
		ILLINOIS	CONTRACT NO. 76T20	

FOR INDEX OF SHEETS, SEE SHEET NO. 2

PROPOSED HIGHWAY PLANS

FAU ROUTE 9293 (BOUL AVE)
SECTION: 131RS-3
SMART OVERLAY
ST. CLAIR COUNTY

TRAFFIC DATA	
LOCATION	BOUL AVE
2024 ADT	4700 (ACTUAL)
2044 ADT	5500 (ESTIMATED)
MU%	2.1
SU%	2.6

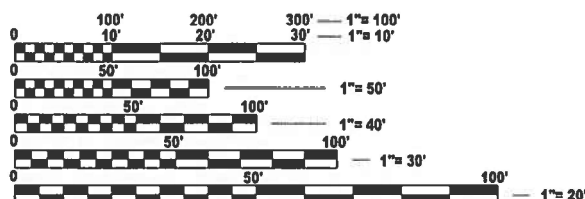
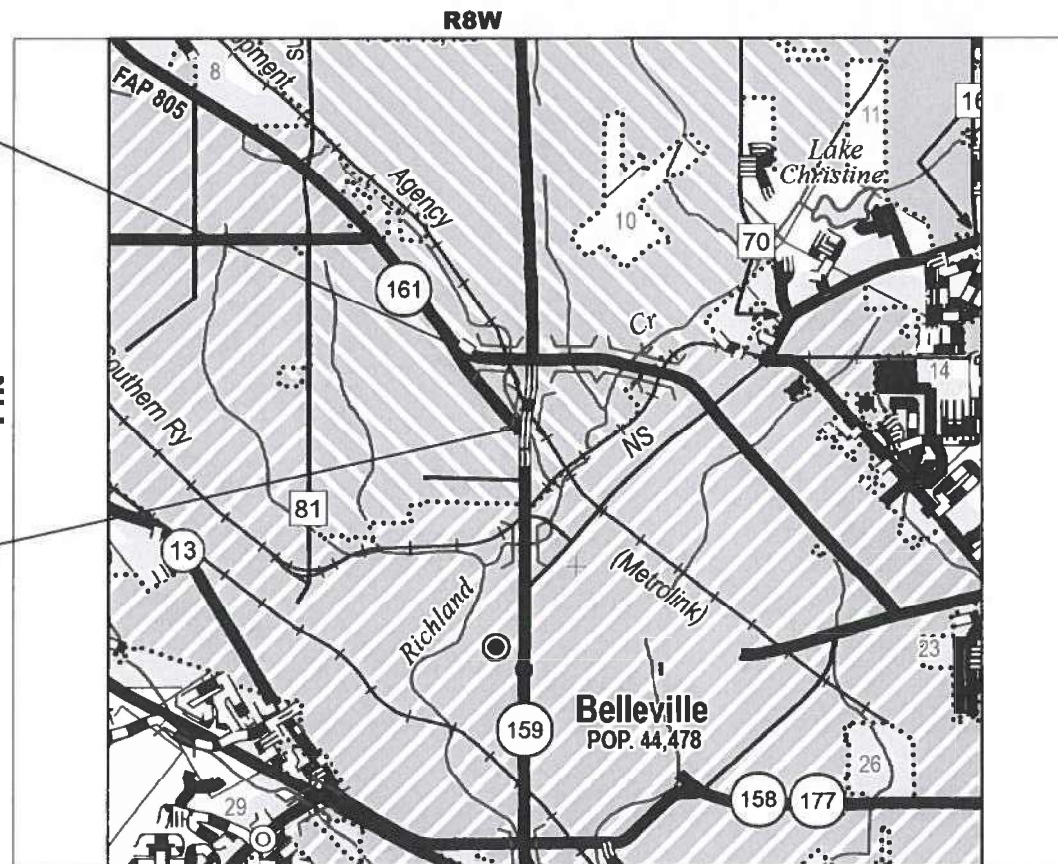
C-98-101-23

FUNCTIONAL CLASSIFICATION: MAJOR COLLECTOR



**BEGIN PROJECT: IL 161
(EXISTING JOINT)
STA. 216+04
LAT: 38.535003
LONG: -89.990355**

**END PROJECT: IL 159
(EXISTING JOINT)
STA. 243+12
LAT: 38.529526
LONG: -89.984645**



FULL SIZE PLANS HAVE BEEN PREPARED USING STANDARD ENGINEERING SCALES. REDUCED SIZED PLANS WILL NOT CONFORM TO STANDARD SCALES. IN MAKING MEASUREMENTS ON REDUCED PLANS, THE ABOVE SCALES MAY BE USED.

J.U.L.I.E.
JOINT UTILITY LOCATION INFORMATION FOR EXCAVATION
1-800-892-0123
OR 811

PROJECT ENGINEER: BILLIE OWEN
PROJECT MANAGER: MEIWU AN

CONTRACT NO. 76T20

GROSS LENGTH = 2,708 FT. = 0.51 MILE
NET LENGTH = 2,708 FT. = 0.51 MILE

STATE OF ILLINOIS
DEPARTMENT OF TRANSPORTATION

SUBMITTED February 2, 2024
Karen L. Brown
REGIONAL ENGINEER

March 22, 2024
Scott A. Etk
ENGINEER OF DESIGN AND ENVIRONMENT

March 22, 2024
Stephen M. Smith
DIRECTOR OF HIGHWAYS PROJECT IMPLEMENTATION

PRINTED BY THE AUTHORITY
OF THE STATE OF ILLINOIS

INDEX OF SHEETS

1. COVER SHEET
2. INDEX OF SHEETS, HIGHWAY STANDARDS, GENERAL NOTES AND COMMITMENTS
3. SUMMARY OF QUANTITIES
- 4-5. TYPICAL SECTION
- 6-7. SCHEDULE OF QUANTITIES
8. LOCATION MAP

HIGHWAY STANDARDS

000001-08	STANDARDS SYMBOLS ABBREVIATIONS & PATTERNS
001006	DECIMAL OF INCH & FOOT
701011-04	OFF ROAD MOVING OPERATIONS, 2L, 2W DAY ONLY
701301-04	LANE CLOSURE, 2 LANE, 2 WAY, SHORT TIME OPERATIONS
701306-04	LANE CLOSURE 2 LANE, 2 WAY, SLOW MOVING OPERATION, DAY ONLY, FOR SPEEDS ≥ 45MPH OR MORE
701311-03	LANE CLOSURE 2 LANE, 2 WAY, SLOW MOVING OPERATION, DAY ONLY
701501-06	URBAN LANE CLOSURE, 2L, 2W, UNDIVIDED
701901-09	TRAFFIC CONTROL DEVICES
780001-05	TYPICAL PAVEMENT MARKINGS
781001-04	TYPICAL APPLICATION RAISED REFLECTION PAVEMENT MARKERS
782001-01	CURB REFLECTORS

GENERAL NOTES

1. UTILITIES KNOWN TO HAVE FACILITIES WITHIN THE PROJECT AREAS

		AERIAL	BURIED
AMEREN ILLINOIS	(GAS & ELECTRIC)	X	X
AT&T ILLINOIS	(COMMUNICATIONS)	X	X
CHARTER COMMUNICATIONS, INC	(CABLE TV)	X	X
CLEARWAVE FIBER LLC	(COMMUNICATIONS)	X	X
EVERSTREAM GLC HOLDING COMPANY LLC	(COMMUNICATIONS)	X	X
FIDELITY COMMUNICATIO S III, INC.	(COMMUNICATIONS)	X	X
ILLINOIS AMERICAN WATER COMPANY	(WATER)		X
VERIZON BUSINESS	(COMMUNICATIONS)	X	X
VILLAGE OF SWANSEA	(SANITARY SEWER)		X
WINDSTREAM KDL, INC.	(COMMUNICATIONS)	X	X

2. NO SURVEY WAS PERFORMED FOR THIS PROJECT AND THE PLANS WERE CREATED USING MICROFLIM AND FIELD MEASUREMENTS.
3. THE RESIDENT ENGINEER SHALL VERIFY THE EXISTENCE OF HIGHWAY LIGHTING, INTELLIGENT TRANSPORTATION SYSTEMS (I.T.S.) UTILITIES, AND/OR ELECTRICAL CABLES ASSOCIATED WITH TRAFFIC SIGNALS WITHIN THE PROJECT LIMITS. IF ANY OF THESE EXIST WITHIN THE PROJECT LIMITS, AND IF THESE ITEMS REQUIRE LOCATING, THE CONTRACTOR SHALL BE DIRECTED TO DO SO ACCORDING TO SECTION 803 OF THE STANDARD SPECIFICATIONS. THIS WORK SHALL BE PAID FOR ACCORDING TO ARTICLE 109.04 OF THE STANDARD SPECIFICATIONS.
4. THE DEPARTMENT STRONGLY ENCOURAGES THE PRIME CONTRACTOR AND THEIR APPROVED SUB-CONTRACTORS TO HIRE MINORITY, WOMEN AND DISADVANTAGED INDIVIDUALS FROM ITS FEDERALLY FUNDED HIGHWAY CONSTRUCTION CAREERS TRAINING PROGRAM (HCCTP) TO HELP MEET WORKFORCE AND TRAINEE GOALS. THIS PROGRAM IS TRAINING MINORITIES, WOMEN AND DISADVANTAGED INDIVIDUALS IN HIGHWAY CONSTRUCTION-RELATED SKILLS, E.G., MATH FOR THE TRADES, JOB READINESS, TECHNICAL SKILLS COURSEWORK (CARPENTRY, CONCRETE FLATWORK, BLUEPRINT READING, SITE PLANS, SITE WORK, TOOLS USE, ETC.) AND OSHA 10 HOUR CERTIFICATION, TO PREPARE THEM FOR A CAREER IN THE HIGHWAY CONSTRUCTION TRADES. GRADUATES ARE WELL-TRAINED AND READY TO BECOME PRODUCTIVE ENTRY-LEVEL CONSTRUCTION WORKERS. CONTACT THE DISTRICT 8 EEO OFFICE AT 618-346-3360 AND/OR THE HCCTP COORDINATOR AT 618-874-6528 TO LEARN MORE ABOUT THE PROGRAM AND FOR ASSISTANCE IN MEETING WORKFORCE AND TRAINEE GOALS.
5. ONLY SHORT-TERM FROM THE FINAL SURFACE SHALL BE PAID FOR AS "SHORT-TERM PAVEMENT MARKING REMOVAL.
6. ALL TURF AREAS DISTURBED BY THE CONTRACTOR SHALL BE SEEDED WITH THE APPROPRAITE EROSION CONTROL, AS DIRECTED BY THE ENGINEER, AT THE CONTRACTOR'S EXPENSE.
7. THE PROPOSED PAVEMENT MARKING SHALL MATCH THE LOCATIONS OF THE EXISTING PAVEMENT MARKING, AS DIRECTED BY THE ENGINEER.
8. FOUR CHANGEABLE MESSAGE SIGNS SHALL BE PROVIDED ALONG IL 161 AND IL 159 TO ALERT DRIVERS OF THE UPCOMING ROAD CONSTRUCTION. CHANGEABLE MESSAGE SIGNS SHALL BE PLACED 14 DAYS PRIOR TO BEGINNING WORK. EXACT LOCATIONS OF THE CHANGEABLE MESSAGE SIGNS SHALL BE DETERMINED BY THE ENGINEER.

MIXTURE REQUIREMENTS

ROUTE	FAU 9293 (BOUL AVE)
SECTION	131RS-3
COUNTY	ST. CLAIR
CONTRACT	76T20

DESCRIPTION	SMART OVERLAY ON BOULAVE FROM IL 161 TO IL 159
-------------	--

ADT (CONSTRUCTION YR.):	4700
MU%	2.1
SU%	2.6
20 YR, ESAL'S	0.7

MIXTURE USE	SURFACE	SHOULDER (surface)
AC/PG	PG 64-22	PG 64-22
DESIGN AIR VOIDS	4.0% @ Ndes=70	4.0% @ Ndes=30
MIX COMPOSITION (Gradation)	IL 9.5	IL 9.5L
FRICTION AGG	MIXTURE "D"	
QUALITY MGMT PROGRAM	QCP	QC/QA
MatTranDev Required?	NO	NO

PLAN QUANTITIES FOR HOT-MIX-ASPHALT ITEMS ARE CALCULATED USING A UNIT WEIGHT OF 112 LB/SQ YD/IN.

COMMITMENTS

NONE

REV. - MS

MODEL: General Notes (Sheet)
FILE NAME: c:\pwworking\civil\millerraj\0942586\0876T20-shr-gencnote.dgn

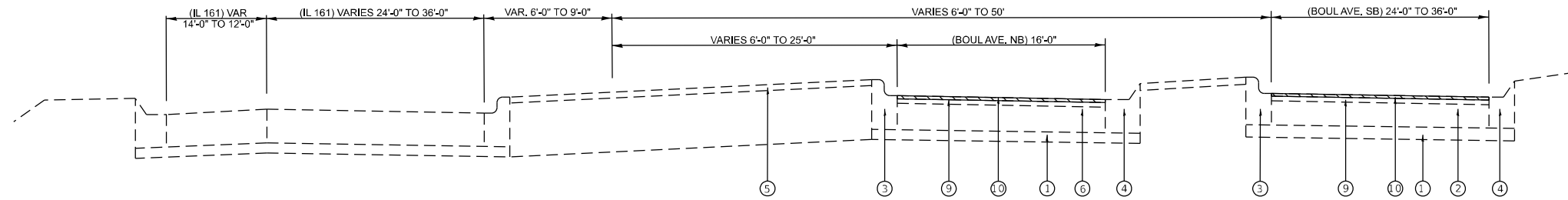
USER NAME =	Rahshun.Miller	DESIGNED -		REVISED -	
		DRAWN -		REVISED -	
PLOT SCALE =	0.16666633 / in.	CHECKED -		REVISED -	
PLOT DATE =	1/30/2024	DATE -		REVISED -	

**STATE OF ILLINOIS
DEPARTMENT OF TRANSPORTATION**

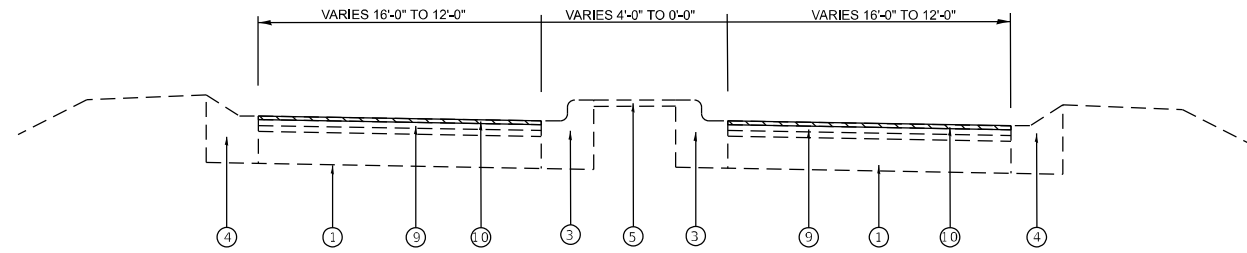
**INDEX OF SHEETS, HIGHWAY STANDARDS, GENERAL NOTES
MIXTURE REQUIREMENTS, COMMITMENTS**

SCALE: 50 SHEET 1 OF 1 SHEETS STA. TO STA.

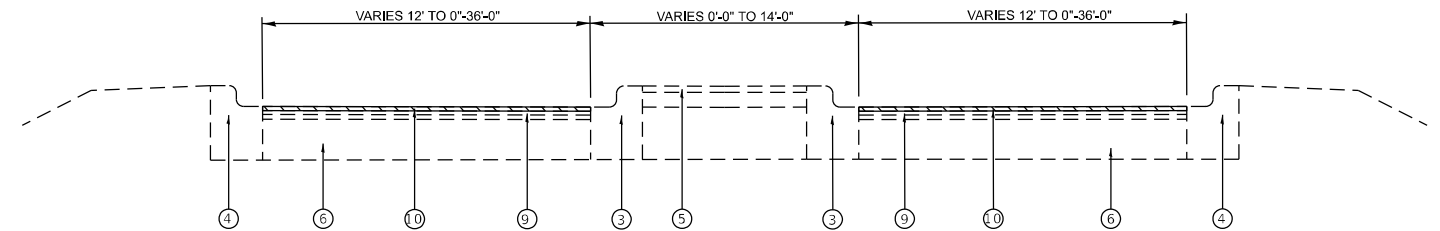
F.A.U RTE.	SECTION	COUNTY	TOTAL SHEETS	SHEET NO.
9293	131RS-3	ST. CLAIR	8	2
CONTRACT NO. 76T20				
ILLINOIS FED. AID PROJECT				



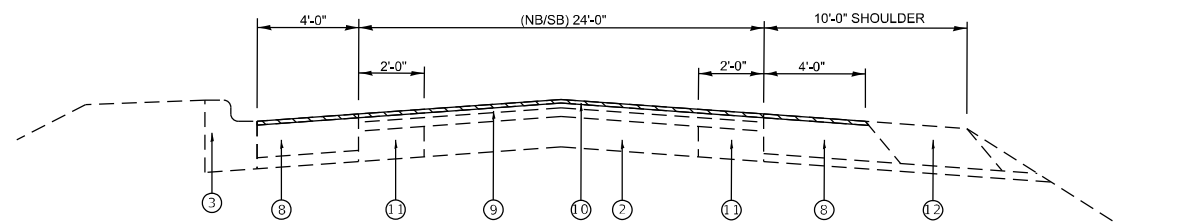
EXISTING TYPICAL SECTION
STA. 216+04 TO STA. 220+09



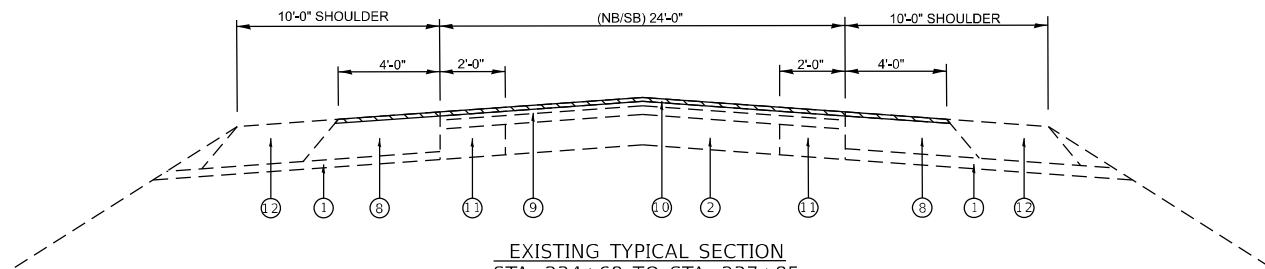
EXISTING TYPICAL SECTION
STA. 220+09 TO STA. 227+09



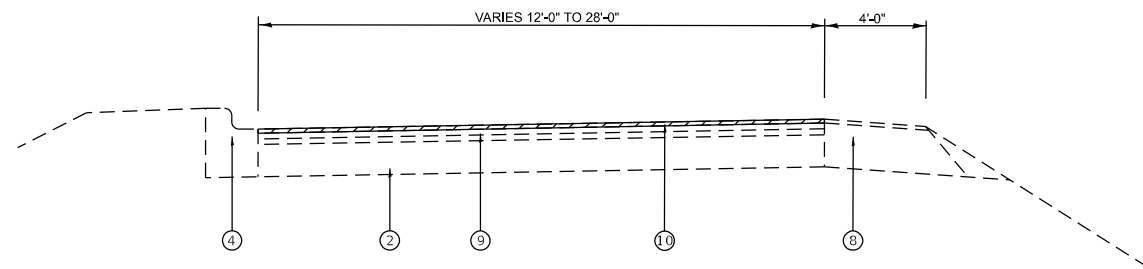
EXISTING TYPICAL SECTION
STA. 240+59 TO STA. 243+12



EXISTING TYPICAL SECTION
STA. 227+09 TO STA. 234+68



EXISTING TYPICAL SECTION
STA. 234+68 TO STA. 237+85



EXISTING TYPICAL SECTION
STA. 237+85 TO STA. 240+59

HMA SURFACE REMOVAL 1 1/2"

LEGEND

- ① EXISTING SUBBASE GRANDULAR MATERIAL, TYPE A, 4"
- ② EXISTING PCC PAVEMENT, 10"
- ③ EXISTING COM. CONC. CURB & GUTTER, TYPE M-6.12
- ④ EXISTING COM. CONC. CURB & GUTTER, TYPE M-6.24
- ⑤ EXISTING CONCRETE MEDIAN SURFACE OR SODDING
- ⑥ EXISTING PCC PAVEMENT 8"
- ⑦ EXISTING CONCRETE MEDIAN, TYPE SM-6.12
- ⑧ EXISTING STABILIZED SHOULDER, 6"
- ⑨ EXISTING BITUMINOUS CONCRETE BINDER COURSE, 1 1/2"
- ⑩ EXISTING BITUMINOUS CONCRETE SURFACE COURSE CLASS 1, 1 1/2"
- ⑪ EXISTING PCC BASE COURSE WIDENING. 8"
- ⑫ EXISTING AGGREGATE SHOULDER, TYPE A
- ⑬ PROPOSED HMA SURFACE COURSE, 1L-9.5, MIX "D", N70, 1 1/2"
- ⑭ PROPOSED LONGITUDINAL JOINT SEALANT "
- ⑮ PROPOSED BITUMINOUS MATERIAL (TACK COAT)
- ⑯ PROPOSED HMA SHOULDER 1 1/2"

MODEL: Typical (Sheet)
FILE NAME: c:\p\work\miller\ra0942586\0942586\120-sh-typical.dgn

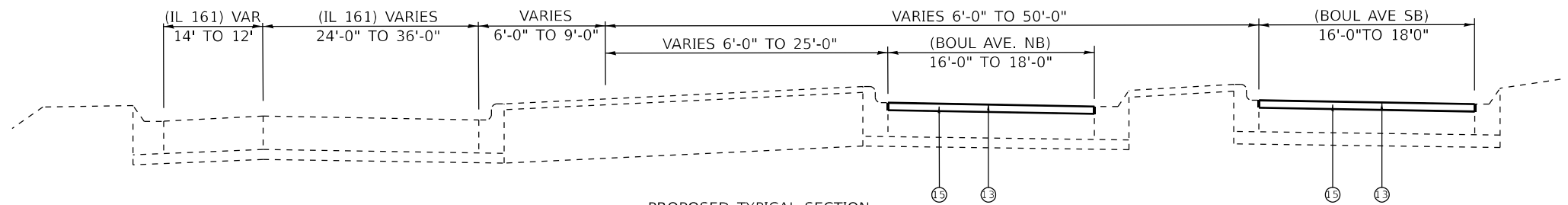
USER NAME = Rahshun.Miller	DESIGNED -	REVISED -
PLOT SCALE = 0.16666833' / in.	DRAWN -	REVISED -
PLOT DATE = 1/12/2024	CHECKED -	REVISED -
	DATE -	REVISED -

**STATE OF ILLINOIS
DEPARTMENT OF TRANSPORTATION**

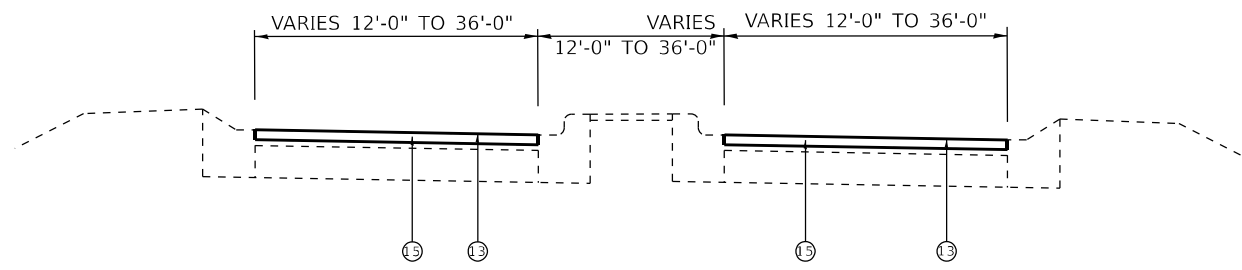
EXISTING TYPICAL SHEETS

SCALE: 50 SHEET 1 OF 2 SHEETS STA. TO STA.

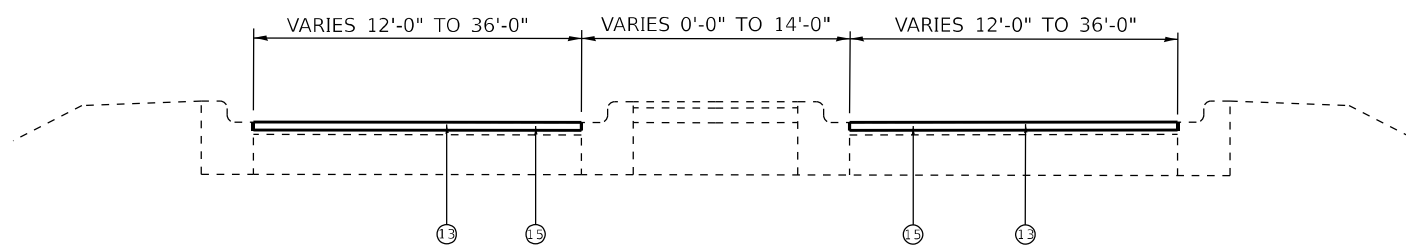
F.A.U. RTE.	SECTION	COUNTY	TOTAL SHEETS	SHEET NO.
9293	131RS-3	ST. CLAIR	8	4
CONTRACT NO. 76T20				
ILLINOIS FED. AID PROJECT				



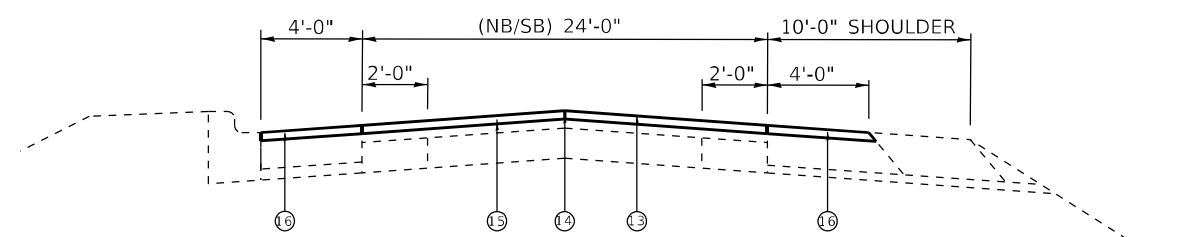
PROPOSED TYPICAL SECTION
STA. 216+04 TO STA. 220+09



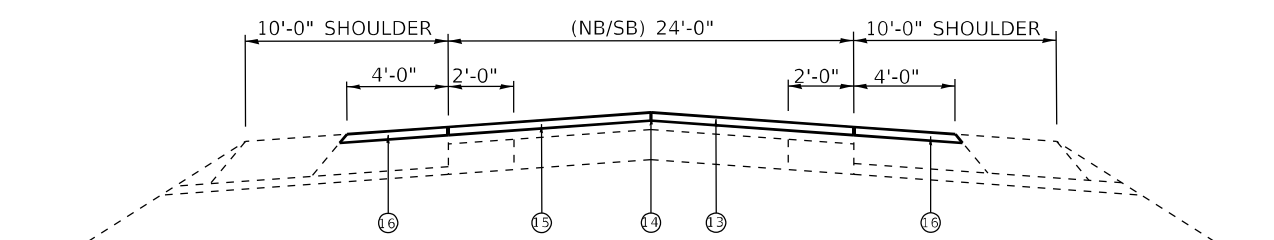
PROPOSED TYPICAL SECTION
STA. 220+09 TO STA. 227+09



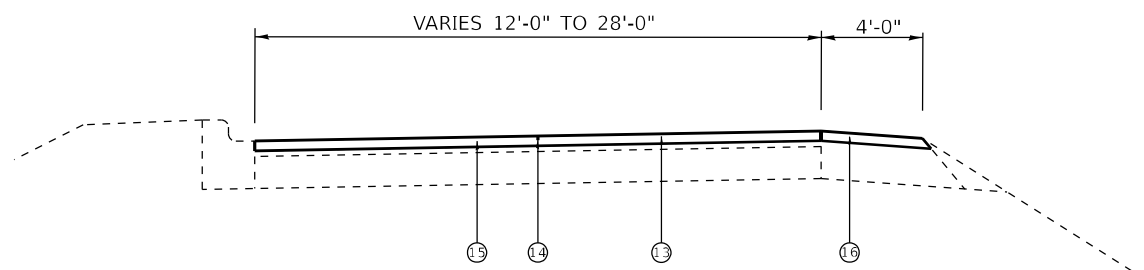
PROPOSED TYPICAL SECTION
STA. 240+59 TO STA. 243+12



PROPOSED TYPICAL SECTION
STA. 227+09 TO STA. 234+68



PROPOSED TYPICAL SECTION
STA. 234+68 TO STA. 237+85



PROPOSED TYPICAL SECTION
STA. 237+85 TO STA. 240+59

LEGEND

- ① EXISTING SUBBASE GRANULAR MATERIAL, TYPE A, 4"
- ② EXISTING PCC PAVEMENT, 10"
- ③ EXISTING COM. CONC. CURB & GUTTER, TYPE M-6.12
- ④ EXISTING COM. CONC. CURB & GUTTER, TYPE M-6.24
- ⑤ EXISTING CONCRETE MEDIAN SURFACE OR SODDING
- ⑥ EXISTING PCC PAVEMENT 8"
- ⑦ EXISTING CONCRETE MEDIAN, TYPE SM-6.12
- ⑧ EXISTING STABILIZED SHOULDER, 6"
- ⑨ EXISTING BITUMINOUS CONCRETE BINDER COURSE, 1 1/2"
- ⑩ EXISTING BITUMINOUS CONCRETE SURFACE COURSE CLASS 1, 1 1/2"
- ⑪ EXISTING PCC BASE COURSE WIDENING, 8"
- ⑫ EXISTING AGGREGATE SHOULDER, TYPE A
- ⑬ PROPOSED HMA SURFACE COURSE, IL-9.5, MIX "D", N70, 1 1/2"
- ⑭ PROPOSED LONGITUDINAL JOINT SEALANT "
- ⑮ PROPOSED BITUMINOUS MATERIAL (TACK COAT)
- ⑯ PROPOSED HMA SHOULDER 1 1/2"

MODEL: Pro Typical1 [Sheet]
FILE NAME: c:\p\work\miller\ra0942586\0876720-sh1-typical1.dgn

USER NAME = Rahshun.Miller	DESIGNED -	REVISED -
DRAWN -	REVISOR -	
PLOT SCALE = 0.16666833' / in.	CHECKED -	REVISOR -
PLOT DATE = 1/30/2024	DATE -	REVISOR -

**STATE OF ILLINOIS
DEPARTMENT OF TRANSPORTATION**

PROPOSED TYPICAL SECTION

SCALE: SHEET 2 OF 2 SHEETS STA. TO STA.

F.A.U. RTE.	SECTION	COUNTY	TOTAL SHEETS	SHEET NO.
9293	131RS-3	ST. CLAIR	8	5
CONTRACT NO. 76T20				
ILLINOIS FED. AID PROJECT				

MAINLINE RESURFACING SCHEDULE

STATION			DIMENSION		HMA SURFACE REMOVAL 1 1/2"	LONGITUDINAL JOINT SEALANT	BITUMINOUS MATERIALS (TACK COAT)	HMA SURFACE COURSE IL-9.5 "MIX D" N70
			LENGTH	WIDTH				
			FOOT	FOOT				
BOUL AVE								
216+04	TO	220+09	405	24	1080.0		486.0	90.7
220+09	TO	227+09	700	26	2022.2		910.0	169.9
227+09	TO	234+68	759	24	2024.0	759.0	910.8	170.0
234+68	TO	237+85	317	24	845.3	317.0	380.4	71.0
237+85	TO	240+59	274	20	608.9	274.0	274.0	51.1
240+59	TO	243+12	253	48	1349.3		607.2	113.3
NB MERGE LANE								
217+99	TO	220+09	250	17	472.2		212.5	39.7
SUB-TOTAL					8402.0	1350.0	3780.9	705.8
SHOULDER SCHEDULE TOTAL					1078.2		485.2	
TOTAL :					9480	1350	4266	706

SHOULDER RESURFACING SCHEDULE

STATION			DIMENSION		HMA SURFACE REMOVAL, 1 1/2"	BITUMINOUS MATERIAL (TACK COAT)	HMA SHOULDER
			LENGTH	WIDTH			
			FOOT	FOOT			
BOUL AVE							
216+04	TO	220+09	405				
220+09	TO	227+09	700				
227+09	TO	234+68	759	4	674.7	303.6	56.7
234+68	TO	237+85	317	4	281.8	126.8	23.7
237+85	TO	240+59	274	4	121.8	54.8	10.2
240+59	TO	243+12	253				
TOTAL :					1078	485	91

TEMPORARY RAMPS

LOCATION		WIDTH	LENGTH	TEMPORARY RAMPS
DESCRIPTION	STATION	(FT)	(FT)	(SY)
BEGINNING (IL 161)	216+04	16	1.5	2.7
MERGE LANE	217+99	18	1.5	3.0
MORGAN ST.	220+30	83	1.5	13.8
MORGAN ST.	220+30	44	1.5	7.3
ENDING (IL 159)	243+15	251	1.5	41.8
TOTAL :				69

MODEL: Schedule ESheet
FILE NAME: c:\p\work\winton\miller\ra0942586\0876720-sh-schedule.dgn

USER NAME = Rahshun.Miller	DESIGNED -	REVISED -
	DRAWN -	REVISED -
PLOT SCALE = \$SCALE\$	CHECKED -	REVISED -
PLOT DATE = 2/2/2024	DATE -	REVISED -

**STATE OF ILLINOIS
DEPARTMENT OF TRANSPORTATION**

SCHEDULE OF QUANTITIES

SCALE: 50 SHEET 1 OF 2 SHEETS STA. TO STA.

F.A.U RTE.	SECTION	COUNTY	TOTAL SHEETS	SHEET NO.
9293	131RS-3	ST. CLAIR	8	6
CONTRACT NO. 76720				
ILLINOIS FED. AID PROJECT				

THERMOPLASTIC PAVEMENT MARKING SCHEDULE

STATION	LENGTH FOOT	THERMOPLASTIC & TEMPORARY				24" WHITE & TEMPORARY 24" STOP BAR	SHORT TERM PAVEMENT MARKING FOOT	SHORT TERM PAVEMENT MARKING REMOVAL SQFT	PAVEMENT MARKING REMOVAL - WATER BLASTING SQFT	RAISED REFLECTIVE PAVEMENT MARKERS AMBER EACH	RAISED REFLECTIVE PAVEMENT MARKER REMOVAL EACH
		6" WHITE EDGE LINE	6" YELLOW SKIP-DASH	12" YELLOW EDGE LINE	12" YELLOW CROSSWALK						
		FOOT	FOOT	FOOT	FOOT	FOOT	FOOT	SQFT	SQFT	EACH	EACH
BOUL AVE											
216+04 TO 220+09	405	623		623		18	74	12	421		
220+09 TO 236+04	1595	3190	399	3190	88		290	48	2289	20	
236+04 TO 243+12	708	1416	177	1416	60		129	21	1023	9	
SUB TOTAL :		5229	576	5229		18					
TOTAL :		11034		148		18	492	82	3733	29	

MODEL: Schedule-2 (Sheet)
 FILE NAME: c:\p\work\miller\rahd0942586\0942586\76T20-sht-schedule.dgn

USER NAME = Rahshun.Miller	DESIGNED -	REVISED -
PLOT SCALE = 0.16666833' / in.	DRAWN -	REVISED -
PLOT DATE = 1/12/2024	CHECKED -	REVISED -
	DATE -	REVISED -

**STATE OF ILLINOIS
DEPARTMENT OF TRANSPORTATION**

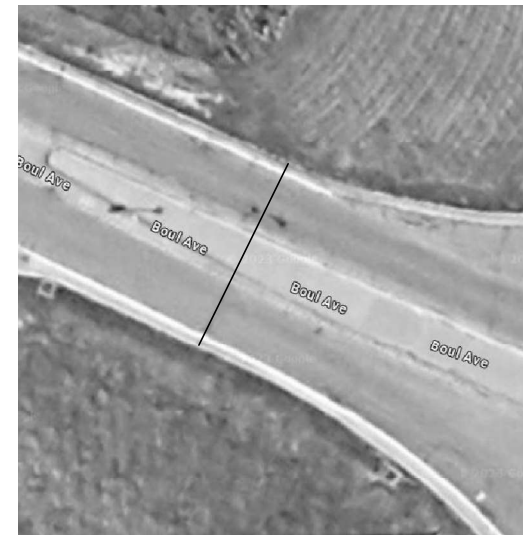
SCHEDULE OF QUANTITIES

SCALE: 50 SHEET 2 OF 2 SHEETS STA. TO STA.

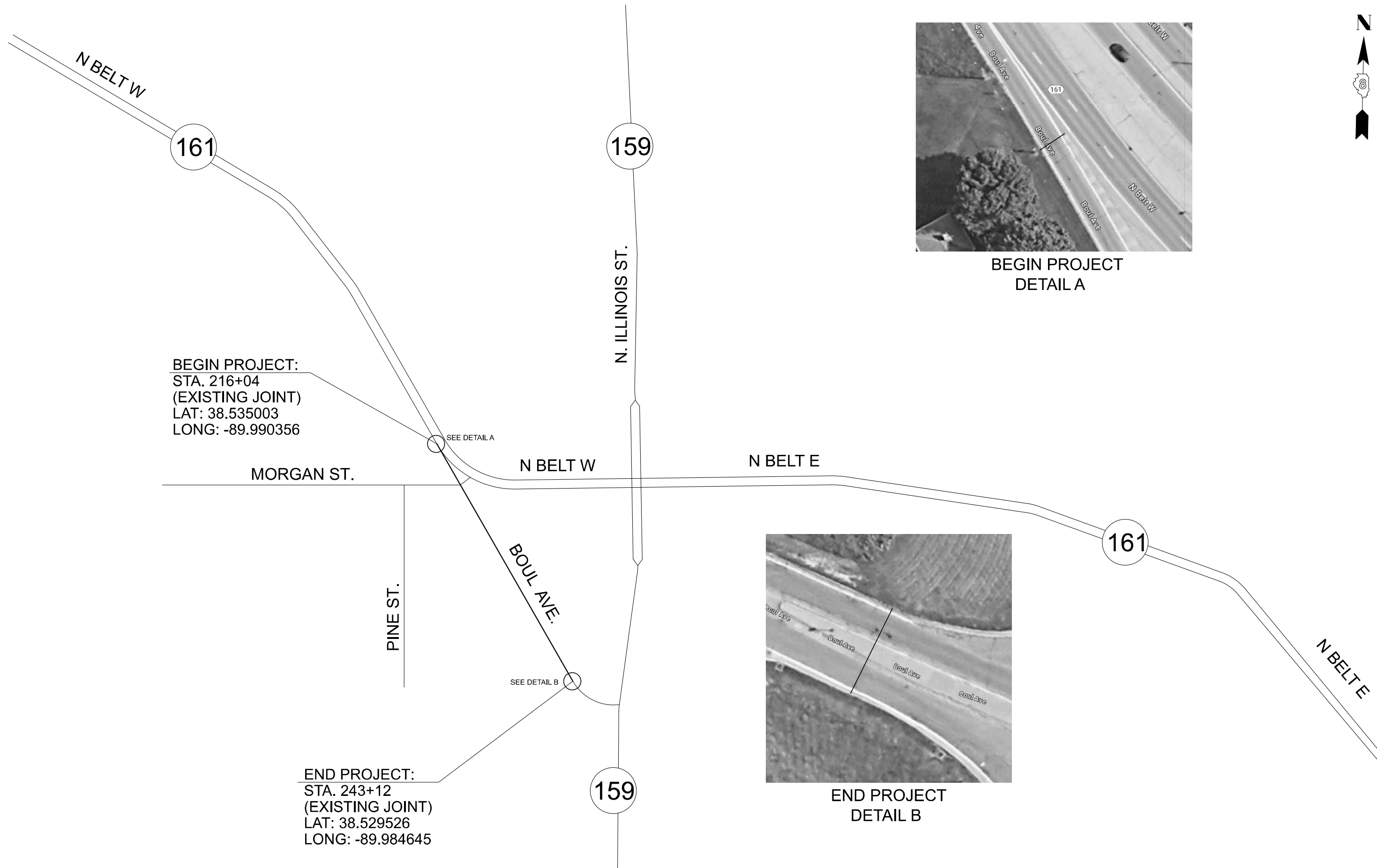
F.A.U RTE.	SECTION	COUNTY	TOTAL SHEETS	SHEET NO.
9293	131RS-3	ST. CLAIR	8	7
CONTRACT NO. 76T20				
ILLINOIS FED. AID PROJECT				



BEGIN PROJECT
DETAIL A



END PROJECT
DETAIL B



BEGIN PROJECT:
STA. 216+04
(EXISTING JOINT)
LAT: 38.535003
LONG: -89.990356

END PROJECT:
STA. 243+12
(EXISTING JOINT)
LAT: 38.529526
LONG: -89.984645

MODEL: Location Map (Sheet)
FILE NAME: c:\p\work\76720\mkuhan\mkuhan@illinois.gov\0942586\0876720-sh-loc.dgn

USER NAME = MeiWu.An	DESIGNED -	REVISED -
	DRAWN -	REVISED -
PLOT SCALE = 0.16666833' / in.	CHECKED -	REVISED -
PLOT DATE = 2/1/2024	DATE -	REVISED -

STATE OF ILLINOIS
DEPARTMENT OF TRANSPORTATION

LOCATION MAP

SCALE: 50 SHEET 1 OF 1 SHEETS STA. TO STA.

F.A.U. RTE.	SECTION	COUNTY	TOTAL SHEETS	SHEET NO.
9293	131RS-3	ST. CLAIR	8	8
CONTRACT NO. 76720				
ILLINOIS FED. AID PROJECT				