

STATE OF ILLINOIS  
DEPARTMENT OF TRANSPORTATION

F.A.I. RTE.	SECTION	COUNTY	TOTAL SHEETS	SHEET NO.
255	82DM	ST. CLAIR	8	1
		ILLINOIS	CONTRACT NO. 76T51	

FOR INDEX OF SHEETS, SEE SHEET NO. 2

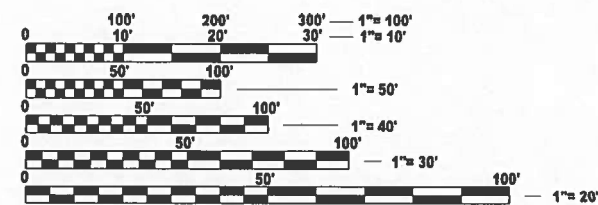
# PROPOSED HIGHWAY PLANS

FAI ROUTE 255 (I-255/IL 3/US 50)  
SECTION 82DM

DEMOLITION  
ST. CLAIR COUNTY

C-98-066-24

D-98-023-24



FULL SIZE PLANS HAVE BEEN PREPARED USING STANDARD ENGINEERING SCALES. REDUCED SIZED PLANS WILL NOT CONFORM TO STANDARD SCALES. IN MAKING MEASUREMENTS ON REDUCED PLANS, THE ABOVE SCALES MAY BE USED.

J.U.L.I.E.  
JOINT UTILITY LOCATION INFORMATION FOR EXCAVATION  
1-800-892-0123  
OR 811



PROJECT LOCATION  
LAT: 38.49478  
LONG: -90.21233

NOT TO SCALE

PROJECT ENGINEER: CHERYL KEPLAR  
PROJECT MANAGER: KAREN CHALLANDES

CONTRACT NO. 76T51

STATE OF ILLINOIS  
DEPARTMENT OF TRANSPORTATION

SUBMITTED January 31 2024  
Karen Challandes  
REGIONAL ENGINEER

March 22, 2024  
Scott A. Etkin  
ENGINEER OF DESIGN AND ENVIRONMENT

March 22, 2024  
Stephen M. Smith  
DIRECTOR OF HIGHWAYS PROJECT IMPLEMENTATION

PRINTED BY THE AUTHORITY  
OF THE STATE OF ILLINOIS

INDEX OF SHEETS

1. COVER SHEET
2. INDEX OF SHEETS, HIGHWAY STANDARDS, GENERAL NOTES AND COMMITMENTS
- 3-4. SUMMARY OF QUANTITIES
5. PARCEL OVERVIEW AND BUILDING DESCRIPTIONS
- 6.-8. PARCEL DETAILS

HIGHWAY STANDARDS

- 000001-08
- 001006
- 280001-07
- 701001-02
- 701006-05
- 701901-09

GENERAL NOTES

1. THE FOLLOWING UTILITIES ARE KNOWN TO HAVE FACILITIES WITHIN THE PROJECT AREA ARE AS FOLLOWS:

AMEREN ILLINOIS  
 CHARTER COMMUNICATIONS, INC.  
 CLEARWAVE FIBER, LLC  
 CITY OF COLUMBIA  
 VILLAGE OF DUPO (WATER & SANITARY SEWER)  
 VILLAGE OF DUPO (GAS)  
 HARRISONVILLE TELEPHONE COMPANY  
 SUGAR LOAF TOWNSHIP SEWER SYSTEM

2. A QUANTITY FOR TWO APPLICATIONS OF MULCH, METHOD 2 HAS BEEN INCLUDED IN THIS CONTRACT. ONE APPLICATION OF MULCH IS TO BE PLACED OVER THE TEMPORARY SEEDING. THE SECOND APPLICATION WILL BE USED AFTER THE FINAL SEEDING OPERATIONS ARE COMPLETE.
3. THERE IS NO TREE REMOVAL WITH THIS CONTRACT.
4. THE DEPARTMENT STRONGLY ENCOURAGES THE PRIME CONTRACTOR AND THEIR APPROVED SUB-CONTRACTORS TO HIRE MINORITY, WOMEN AND DISADVANTAGED INDIVIDUALS FROM ITS FEDERALLY FUNDED HIGHWAY CONSTRUCTION CAREERS TRAINING PROGRAM (HCCTP) TO HELP MEET WORKFORCE AND TRAINEE GOALS. THIS PROGRAM IS TRAINING MINORITIES, WOMEN AND DISADVANTAGED INDIVIDUALS IN HIGHWAY CONSTRUCTION-RELATED SKILLS, E.G., MATH FOR THE TRADES, JOB READINESS, TECHNICAL SKILLS COURSEWORK (CARPENTRY, CONCRETE FLATWORK, BLUEPRINT READING, SITE PLANS, SITE WORK, TOOLS USE, ETC.) AND OSHA 10 HOUR CERTIFICATION, TO PREPARE THEM FOR A CAREER IN THE HIGHWAY CONSTRUCTION TRADES. GRADUATES ARE WELL-TRAINED AND READY TO BECOME PRODUCTIVE ENTRY-LEVEL CONSTRUCTION WORKERS. CONTACT THE DISTRICT 8 EEO OFFICE AT 618-346-3360 AND/OR THE HCCTP COORDINATOR AT 618-874-6528 TO LEARN MORE ABOUT THE PROGRAM AND FOR ASSISTANCE IN MEETING WORKFORCE AND TRAINEE GOALS.

COMMITMENTS

NO EXCAVATION OR DEMOLITION WORK CAN BE CONDUCTED FOR THIS CONTRACT WITHOUT AN ILLINOIS STATE ARCHAEOLOGICAL SURVEY (ISAS) PROFESSIONAL STAFF MEMBER PRESENT THAT IS RESPONSIBLE FOR THE IMPLANTATION OF THE MITIGATION MEASURES TO MEET THE REQUIREMENTS OF 36 CFR PART 61, APPENDIX A. A MINIMUM OF 72 HOURS PRIOR TO WHEN WORK WILL BE CONDUCTED, PLEASE CONTACT ISAS COORDINATOR AND ASSOCIATE RESEARCH SCIENTIST, DR. ALLEEN BETZENHAUSEN, AT 217-244-4244 OR mail to: betzenha@illinois.edu

MODEL: General Notes (Sheet)  
 FILE NAME: c:\pwworking\challandes\0852453\0876151-sh1-gemnote.dgn

REV. - MS

USER NAME = karen.challandes	DESIGNED -	REVISED -	<b>STATE OF ILLINOIS DEPARTMENT OF TRANSPORTATION</b>	<b>INDEX OF SHEETS, HIGHWAY STANDARDS GENERAL NOTES AND COMMITMENTS</b>	F A I RTE.	SECTION	COUNTY	TOTAL SHEETS	SHEET NO.	
	DRAWN -	REVISED -			255	82DM	ST. CLAIR	8	2	
PLOT SCALE = 0.16866833' / in.	CHECKED -	REVISED -			CONTRACT NO. 76T51					
PLOT DATE = 1/29/2024	DATE -	REVISED -			SCALE:	SHEET	OF	SHEETS	STA.	TO STA.
				ILLINOIS   FED. AID PROJECT						

CODE NO.	ITEM	UNIT	TOTAL QUANTITY	CONSTR. CODE
				100% STATE
				OTHER
				0044
				URBAN
25000110	SEEDING, CLASS 1A	ACRE	1.25	1.25
25000400	NITROGEN FERTILIZER NUTRIENT	POUND	112	112
25000500	PHOSPHORUS FERTILIZER NUTRIENT	POUND	112	112
25000600	POTASSIUM FERTILIZER NUTRIENT	POUND	112	112
25000700	AGRICULTURAL GROUND LIMESTONE	TON	2.5	2.5
25100115	MULCH, METHOD 2	ACRE	2.5	2.5
28000250	TEMPORARY EROSION CONTROL SEEDING	POUND	125	125
28000400	PERIMETER EROSION BARRIER	FOOT	2351	2351
67100100	MOBILIZATION	L SUM	1	1
Z0007601	BUILDING REMOVAL NO. 1	L SUM	1	1
Z0007602	BUILDING REMOVAL NO. 2	L SUM	1	1
Z0007603	BUILDING REMOVAL NO. 3	L SUM	1	1
Z0007604	BUILDING REMOVAL NO. 4	L SUM	1	1
Z0007605	BUILDING REMOVAL NO. 5	L SUM	1	1

CODE NO.	ITEM	UNIT	TOTAL QUANTITY	CONSTR. CODE
				100% STATE
				OTHER
				0044
				URBAN
Z0007606	BUILDING REMOVAL NO. 6	L SUM	1	1
Z0007607	BUILDING REMOVAL NO. 7	L SUM	1	1
Z0007608	BUILDING REMOVAL NO. 8	L SUM	1	1
Z0007609	BUILDING REMOVAL NO. 9	L SUM	1	1
Z0007610	BUILDING REMOVAL NO. 10	L SUM	1	1
Z0007611	BUILDING REMOVAL NO. 11	L SUM	1	1
Z0007612	BUILDING REMOVAL NO. 12	L SUM	1	1
Z0007613	BUILDING REMOVAL NO. 13	L SUM	1	1
Z0007614	BUILDING REMOVAL NO. 14	L SUM	1	1
Z0007615	BUILDING REMOVAL NO. 15	L SUM	1	1
Z0007616	BUILDING REMOVAL NO. 16	L SUM	1	1
Z0007617	BUILDING REMOVAL NO. 17	L SUM	1	1
Z0007618	BUILDING REMOVAL NO. 18	L SUM	1	1
Z0007619	BUILDING REMOVAL NO. 19	L SUM	1	1

MODEL: SOQ (Sheet)  
 FILE NAME: c:\p\work\p\w\challandes\k0952453\0876151-sh-SOQ.dgn

USER NAME = karen.challandes	DESIGNED -	REVISED -
	DRAWN -	REVISED -
PLOT SCALE = 0.16666833' / in.	CHECKED -	REVISED -
PLOT DATE = 1/30/2024	DATE -	REVISED -

**STATE OF ILLINOIS  
DEPARTMENT OF TRANSPORTATION**

**SUMMARY OF QUANTITIES**

SCALE: SHEET 1 OF 2 SHEETS STA. TO STA.

F.A.I RTE.	SECTION	COUNTY	TOTAL SHEETS	SHEET NO.
255	82DM	ST. CLAIR	8	3
CONTRACT NO. 76T51				
ILLINOIS FED. AID PROJECT				

MODEL: SOQ-1 [Sheet]  
 FILE NAME: c:\p\work\pwr\challandes\0952453\0876151-sh-SOQ.dgn

CODE NO.	ITEM	UNIT	TOTAL QUANTITY	CONSTR. CODE
				100% STATE
				OTHER
				0044
				URBAN
Z0007620	BUILDING REMOVAL NO. 20	L SUM	1	1
Z0007621	BUILDING REMOVAL NO. 21	L SUM	1	1
Z0007622	BUILDING REMOVAL NO. 22	L SUM	1	1
Z0007623	BUILDING REMOVAL NO. 23	L SUM	1	1
* Z0049901	REMOVAL AND DISPOSAL OF NON-FRIABLE ASBESTOS, BUILDING NO. 1	L SUM	1	1
* Z0049902	REMOVAL AND DISPOSAL OF NON-FRIABLE ASBESTOS, BUILDING NO. 2	L SUM	1	1
* Z0049904	REMOVAL AND DISPOSAL OF NON-FRIABLE ASBESTOS, BUILDING NO. 4	L SUM	1	1
* Z0049905	REMOVAL AND DISPOSAL OF NON-FRIABLE ASBESTOS, BUILDING NO. 5	L SUM	1	1
* Z0049906	REMOVAL AND DISPOSAL OF NON-FRIABLE ASBESTOS, BUILDING NO. 6	L SUM	1	1
* Z0049908	REMOVAL AND DISPOSAL OF NON-FRIABLE ASBESTOS, BUILDING NO. 8	L SUM	1	1
* Z0049910	REMOVAL AND DISPOSAL OF NON-FRIABLE ASBESTOS, BUILDING NO. 10	L SUM	1	1
* Z0049913	REMOVAL AND DISPOSAL OF NON-FRIABLE ASBESTOS, BUILDING NO. 13	L SUM	1	1
* Z0049917	REMOVAL AND DISPOSAL OF NON-FRIABLE ASBESTOS, BUILDING NO. 17	L SUM	1	1
* Z0049919	REMOVAL AND DISPOSAL OF NON-FRIABLE ASBESTOS, BUILDING NO. 19	L SUM	1	1

\* SPECIALTY ITEM

CODE NO.	ITEM	UNIT	TOTAL QUANTITY	CONSTR. CODE
				100% STATE
				OTHER
				0044
				URBAN
* Z0049920	REMOVAL AND DISPOSAL OF NON-FRIABLE ASBESTOS, BUILDING NO. 20	L SUM	1	1
* Z0049922	REMOVAL AND DISPOSAL OF NON-FRIABLE ASBESTOS, BUILDING NO. 22	L SUM	1	1

USER NAME = karen.challandes	DESIGNED -	REVISED -
	DRAWN -	REVISED -
PLOT SCALE = 0.16666833' / in.	CHECKED -	REVISED -
PLOT DATE = 1/30/2024	DATE -	REVISED -

**STATE OF ILLINOIS  
 DEPARTMENT OF TRANSPORTATION**

**SUMMARY OF QUANTITIES**

SCALE: SHEET 2 OF 2 SHEETS STA. TO STA.

F.A.I RTE.	SECTION	COUNTY	TOTAL SHEETS	SHEET NO.
255	82DM	ST. CLAIR	8	4
CONTRACT NO. 76T51				
ILLINOIS FED. AID PROJECT				



PARCEL NUMBER	BUILDING REMOVAL NUMBER	DESCRIPTION
8810023	1	2289 SQ FT TWO STORY HOUSE ON BASEMENT
8810024	2	1325 SQ FT ONE AND A HALF HOUSE ON BASEMENT
8810024	3	396 SQ FT GARAGE ON CONCRETE SLAB
8810026	4	940 SQ FT ONE STORY HOUSE ON BASEMENT
8810026	5	391 SQ FT GARAGE ON CONCRETE SLAB
8810027	6	1376 SQ FT ONE STORY HOUSE ON BASEMENT
8810027	7	192 SQ FT CONCRETE PATIO
8810030	8	1008 SQ FT ONE STORY HOUSE ON CRAWL SPACE
8810030	9	75 SQ FT SHED
8810031	10	858 SQ FT ONE STORY HOUSE ON BASEMENT
8810031	11	554 SQ FT CONCRETE SLAB
8810031	12	104 SQ FT CONCRETE SLAB
8810032	13	1215 SQ FT ONE STORY HOUSE ON BASEMENT
8810032	14	306 SQ FT GARAGE ON CONCRETE SLAB
8810033	15	800 SQ FT ONE STORY HOUSE ON CRAWL SPACE
8810033	16	330 SQ FT CONCRETE SLAB
8810034	17	959 SQ FT ONE STORY HOUSE ON BASEMENT
8810034	18	607 SQ FT CONCRETE SLAB
8810044	19	1512 SQ FT ONE STORY HOUSE ON BASEMENT
8810045	20	1008 SQ FT ONE STORY HOUSE ON BASEMENT
8810045	21	1314 SQ FT CONCRETE SLAB
8810046	22	788 SQ FT ONE STORY HOUSE ON CRAWL SPACE
8810046	23	21 SQ FT SHED

MODEL: 76T51-Plan Sheet [Sheet]  
 FILE NAME: c:\p\work\76T51\challandes\09524531.dgn

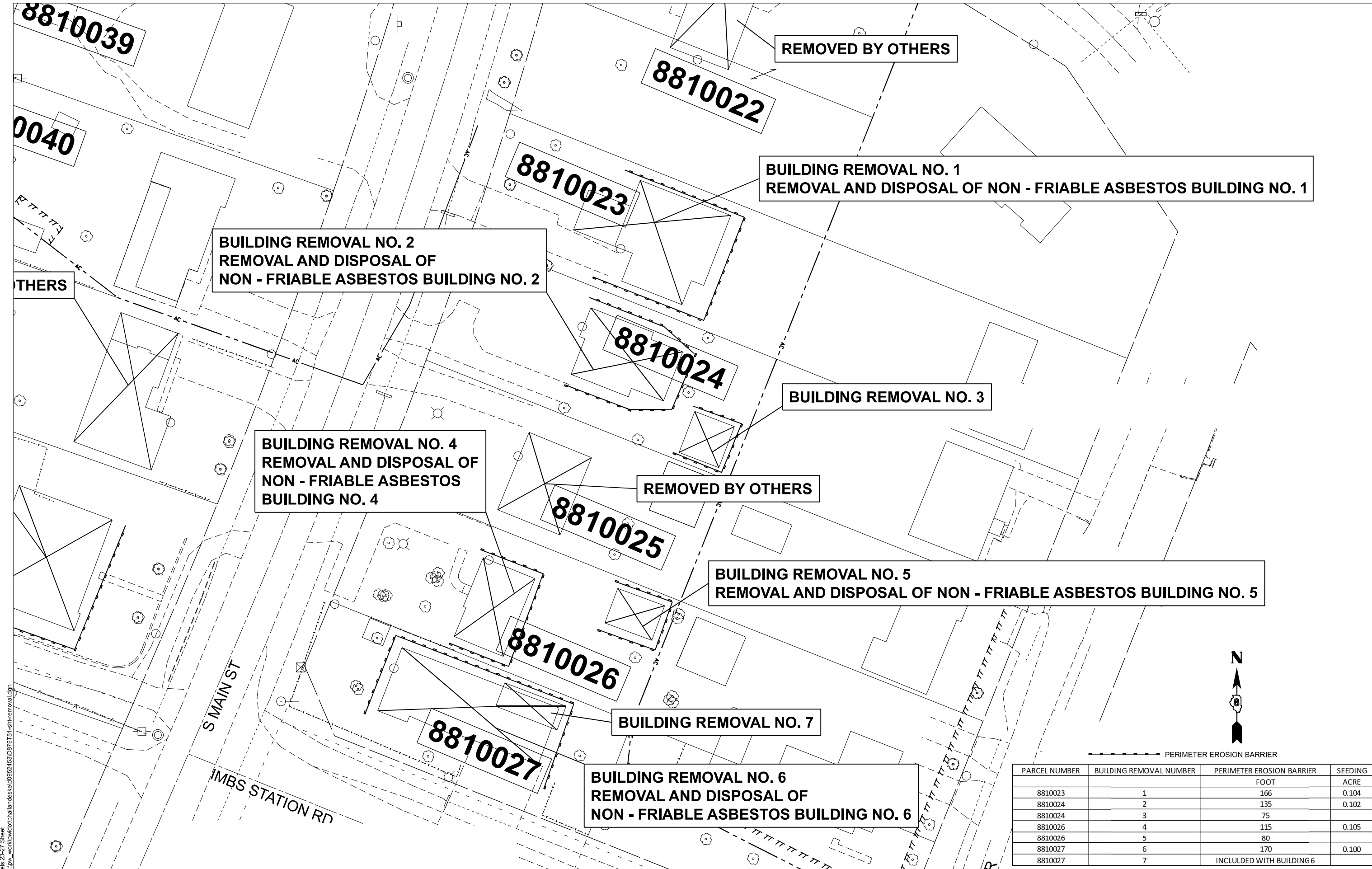
USER NAME = karen.challandes	DESIGNED -	REVISED -
	DRAWN -	REVISED -
PLOT SCALE = 0.16666833' / in.	CHECKED -	REVISED -
PLOT DATE = 1/30/2024	DATE -	REVISED -

**STATE OF ILLINOIS**  
**DEPARTMENT OF TRANSPORTATION**

**PARCEL OVERVIEW**  
**AND BUILDING DESCRIPTIONS**

SCALE: SHEET OF SHEETS STA. TO STA.

F.A.I. RTE.	SECTION	COUNTY	TOTAL SHEETS	SHEET NO.
255	82DM	ST. CLAIR	8	5
CONTRACT NO. 76T51				
ILLINOIS FED. AID PROJECT				



MODEL: Parcels 23-27\_Sheet  
 FILE NAME: c:\p\work\wv\challandes\0952453\0876151-shr-removal.dgn

USER NAME = karen.challandes	DESIGNED -	REVISED -
	DRAWN -	REVISED -
PLOT SCALE = 0.16666833' / in.	CHECKED -	REVISED -
PLOT DATE = 1/30/2024	DATE -	REVISED -

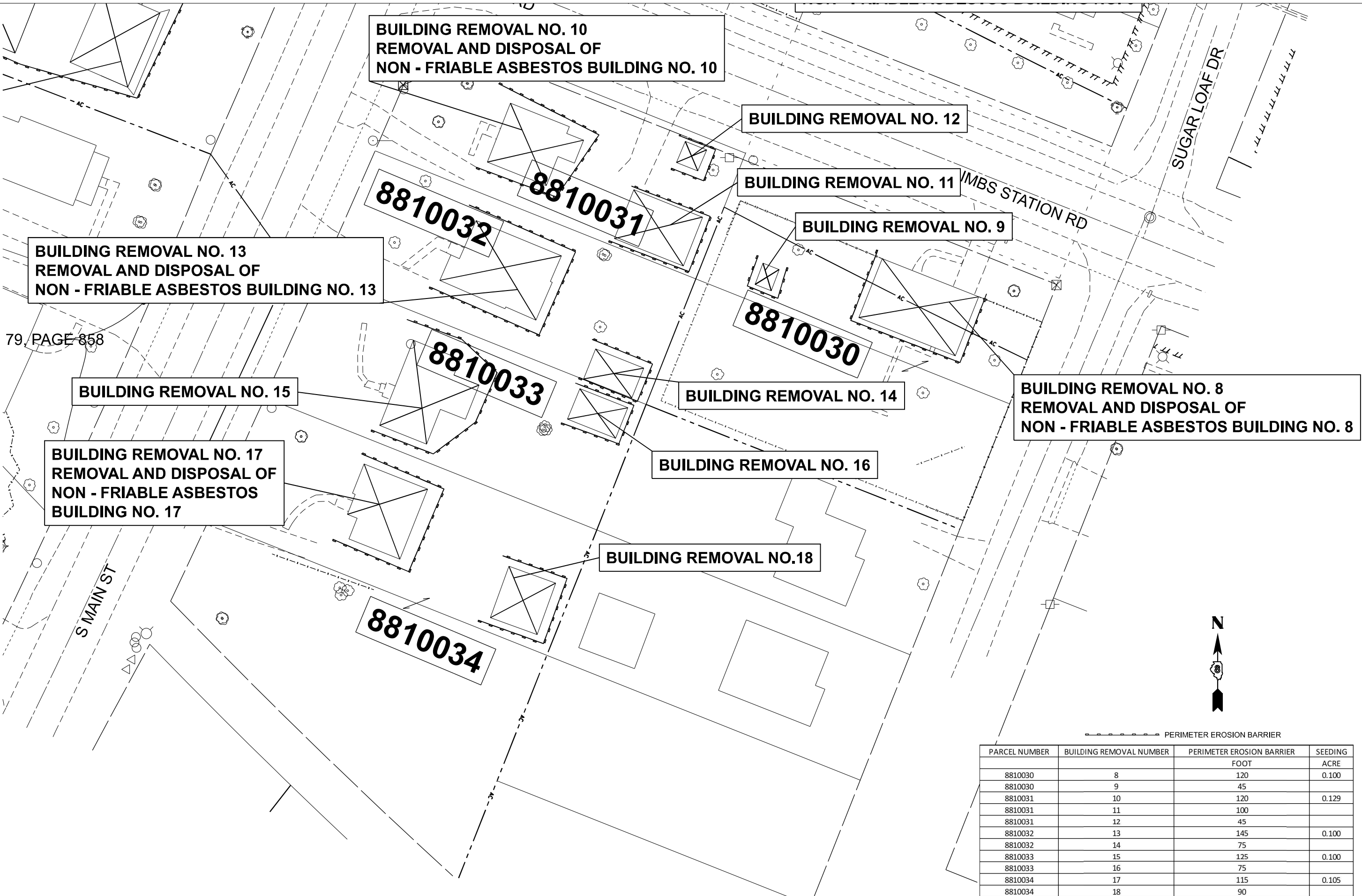
**STATE OF ILLINOIS**  
**DEPARTMENT OF TRANSPORTATION**

**DEMO REMOVAL PARCELS**  
**8810023, 8810024, 8810026, 8810027**

SCALE: SHEET 1 OF 3 SHEETS STA. TO STA.

PARCEL NUMBER	BUILDING REMOVAL NUMBER	PERIMETER EROSION BARRIER	SEEDING
		FOOT	ACRE
8810023	1	166	0.104
8810024	2	135	0.102
8810024	3	75	
8810026	4	115	0.105
8810026	5	80	
8810027	6	170	0.100
8810027	7	INCLUDED WITH BUILDING 6	

F.A.I. RTE. 255	SECTION 82DM	COUNTY ST. CLAIR	TOTAL SHEETS 8	SHEET NO. 6
CONTRACT NO. 76T51				
ILLINOIS FED. AID PROJECT				



79 PAGE 858

**BUILDING REMOVAL NO. 13  
REMOVAL AND DISPOSAL OF  
NON - FRIABLE ASBESTOS BUILDING NO. 13**

**BUILDING REMOVAL NO. 10  
REMOVAL AND DISPOSAL OF  
NON - FRIABLE ASBESTOS BUILDING NO. 10**

**BUILDING REMOVAL NO. 12**

**BUILDING REMOVAL NO. 11**

**BUILDING REMOVAL NO. 9**

**BUILDING REMOVAL NO. 15**

**BUILDING REMOVAL NO. 14**

**BUILDING REMOVAL NO. 8  
REMOVAL AND DISPOSAL OF  
NON - FRIABLE ASBESTOS BUILDING NO. 8**

**BUILDING REMOVAL NO. 17  
REMOVAL AND DISPOSAL OF  
NON - FRIABLE ASBESTOS  
BUILDING NO. 17**

**BUILDING REMOVAL NO. 16**

**BUILDING REMOVAL NO.18**



PERIMETER EROSION BARRIER

PARCEL NUMBER	BUILDING REMOVAL NUMBER	PERIMETER EROSION BARRIER	SEEDING
		FOOT	ACRE
8810030	8	120	0.100
8810030	9	45	
8810031	10	120	0.129
8810031	11	100	
8810031	12	45	
8810032	13	145	0.100
8810032	14	75	
8810033	15	125	0.100
8810033	16	75	
8810034	17	115	0.105
8810034	18	90	

MODEL: Parcels 30-34\_Sheet  
FILE NAME: c:\p\work\wv\challandes\08952453\0876151-shr-removal.dgn

USER NAME = karen.challandes	DESIGNED -	REVISED -
	DRAWN -	REVISED -
PLOT SCALE = 0.16666833' / in.	CHECKED -	REVISED -
PLOT DATE = 1/30/2024	DATE -	REVISED -

**STATE OF ILLINOIS  
DEPARTMENT OF TRANSPORTATION**

**DEMO REMOVAL PARCELS - 8810030  
8810031, 8810032, 8810033, 8810034**

SCALE: SHEET 2 OF 3 SHEETS STA. TO STA.

F.A.I RTE.	SECTION	COUNTY	TOTAL SHEETS	SHEET NO.
255	82DM	ST. CLAIR	8	7
CONTRACT NO. 76T51				
ILLINOIS FED. AID PROJECT				



06-33.0-1

REMOVED BY OTHERS

8810042

BUILDING REMOVAL NO. 19  
REMOVAL AND DISPOSAL OF  
NON - FRIABLE ASBESTOS BUILDING NO. 19

8810044

BUILDING REMOVAL NO. 22  
REMOVAL AND DISPOSAL OF  
NON - FRIABLE ASBESTOS BUILDING NO. 22

BUILDING REMOVAL NO. 23

8810046

8810045

BUILDING REMOVAL NO. 21

BUILDING REMOVAL NO. 20  
REMOVAL AND DISPOSAL OF  
NON - FRIABLE ASBESTOS BUILDING NO. 20

DIA, WATERLOO RAILROAD

S MAIN ST

IMBS STATION RD

SW 1/4 LINE, LOT 1  
NE 1/4 LINE, LOT 1

PERIMETER EROSION BARRIER

PARCEL NUMBER	BUILDING REMOVAL NUMBER	PERIMETER EROSION BARRIER	SEEDING
		FOOT	ACRE
8810044	19	185	0.103
8810045	20	205	0.105
8810045	21	INCLUDED WITH BUILDING 20	
8810046	22	165	0.100
8810046	23	INCLUDED WITH BUILDING 22	
TOTAL		2351	1.25

MODEL: Parcels 44-46 Sheet  
FILE NAME: c:\p\work\dwg\challandes\06330876151-shr-removal.dgn

USER NAME = karen.challandes	DESIGNED -	REVISED -
	DRAWN -	REVISED -
PLOT SCALE = 0.16666633' / in.	CHECKED -	REVISED -
PLOT DATE = 1/30/2024	DATE -	REVISED -

STATE OF ILLINOIS  
DEPARTMENT OF TRANSPORTATION

DEMO REMOVAL PARCELS  
8810044, 8810045, 8810046

SCALE: SHEET 3 OF 3 SHEETS STA. TO STA.

F.A.I RTE.	SECTION	COUNTY	TOTAL SHEETS	SHEET NO.
255	82DM	ST. CLAIR	8	8
CONTRACT NO. 76751				
ILLINOIS FED. AID PROJECT				