

04-26-2024 LETTING ITEM 178

STATE OF ILLINOIS
DEPARTMENT OF TRANSPORTATION
**PLANS FOR PROPOSED
LOCAL AGENCY IMPROVEMENT**

**FAS 650A (N. BROADWAY STREET)
SECTION 21-00063-00-RS**

**PROPOSED RESURFACING
SHELBYVILLE, ILLINOIS
SHELBY COUNTY**

F.A.S. RTE.	SECTION	COUNTY	TOTAL SHEETS	SHEET NO.
650A	21-00063-00-RS	SHELBY	5	1
		ILLINOIS	CONTRACT NO. 95955	

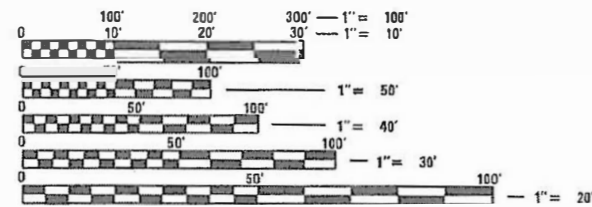
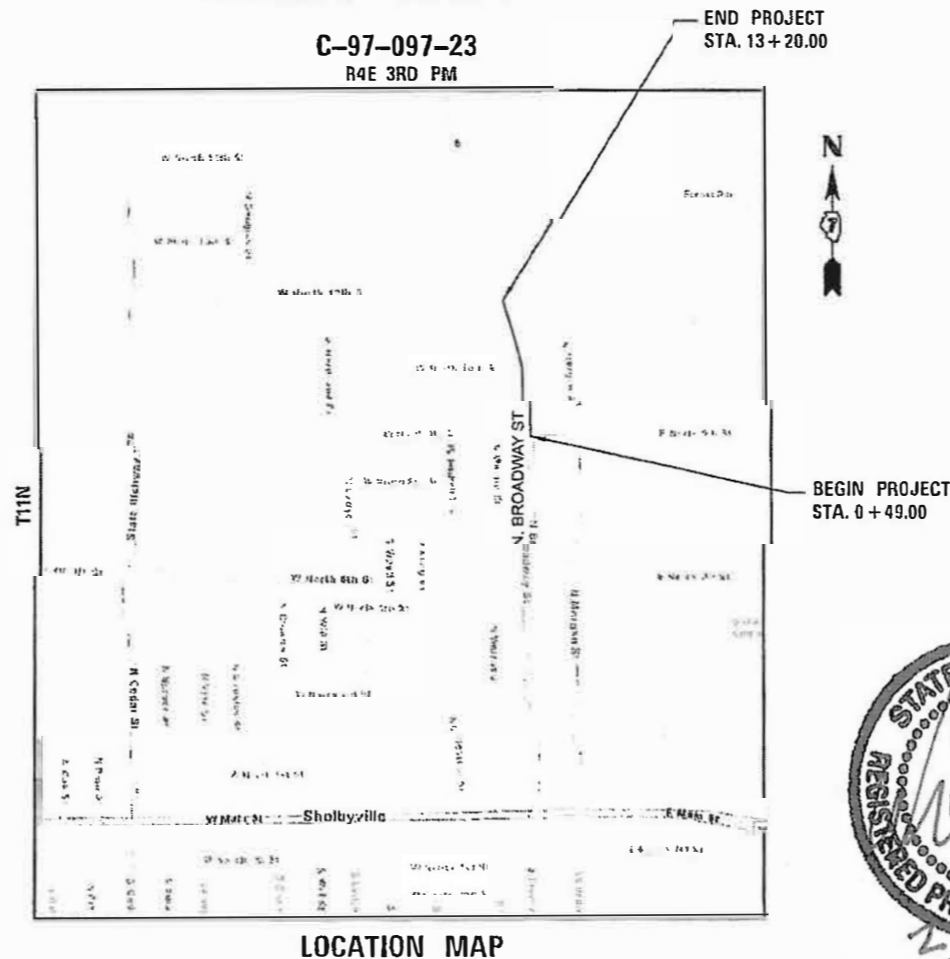
INDEX OF SHEETS

SHEET NO.	DESCRIPTION
1	COVER
2	SUMMARY OF QUANTITIES
3	SCHEDULE OF QUANTITIES
4	TYPICAL SECTIONS AND DETAILS
5	IMPROVEMENT PLAN

HIGHWAY STANDARDS

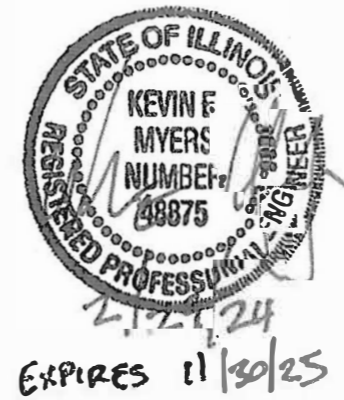
STANDARD NO.	DESCRIPTION
000001-08	STANDARD SYMBOLS, ABBREVIATIONS AND PATTERNS
001006	DECIMAL OF AN INCH AND OF A FOOT
701501-06	URBAN LANE CLOSURE, 2L, 2W, UNDIVIDED
701901-09	TRAFFIC CONTROL DEVICES
780001-05	TYPICAL PAVEMENT MARKINGS

ADT = 700
DESIGN SPEED = 30 MPH



FULL SIZE PLANS HAVE BEEN PREPARED USING STANDARD ENGINEERING SCALES. REDUCED SIZED PLANS WILL NOT CONFORM TO STANDARD SCALES. IN MAKING MEASUREMENTS ON REDUCED PLANS, THE ABOVE SCALES MAY BE USED.

J.U.L.I.E.
JOINT UTILITY LOCATION INFORMATION FOR EXCAVATION
1-800-892-0123
OR 811



STATE OF ILLINOIS DEPARTMENT OF TRANSPORTATION	
APPROVED	<u>2/22/24</u> CITY OF SHELBYVILLE, DIRECTOR OF PUBLIC WORKS
PASSED	<u>03/01/24</u> DISTRICT SEVEN ENGINEER OF LOCAL ROADS & STREETS
RELEASING FOR BID BASED ON LIMITED REVIEW	<u>03/27/24</u> REGIONAL ENGINEER

**PRINTED BY THE AUTHORITY
OF THE STATE OF ILLINOIS**

GROSS LENGTH = 1,271 FT. = 0.24 MILE
NET LENGTH = 1,271 FT. = 0.24 MILE

CONTRACT NO. 95955

CODE NO.	ITEM	UNIT	TOTAL QUANTITY	CONSTR. CODE	
				ROADWAY	
				0005	RURAL
40600290	BITUMINOUS MATERIALS (TACK COAT)	POUND	2001	2001	
40600370	LONGITUDINAL JOINT SEALANT	FOOT	1271	1271	
40600982	HOT-MIX ASPHALT SURFACE REMOVAL - BUTT JOINT	SQ YD	412	412	
40600990	TEMPORARY RAMP	SQ YD	97	97	
40602970	HOT-MIX ASPHALT BINDER COURSE, IL-9.5FG, N70	TON	280	280	
40604052	HOT-MIX ASPHALT SURFACE COURSE, IL-9.5, MIX "C", N70	TON	244	244	
40800050	INCIDENTAL HOT-MIX ASPHALT SURFACING	TON	17.1	17.1	
44000200	DRIVEWAY PAVEMENT REMOVAL	SQ YD	111	111	
48102100	AGGREGATE WEDGE SHOULDER, TYPE B	TON	32	32	
60300405	VALVE BOX FRAMES TO BE ADJUSTED	EACH	2	2	
67100100	MOBILIZATION	L SUM	1	1	
70102620	TRAFFIC CONTROL AND PROTECTION, STANDARD 701501	L SUM	1	1	
* 78000200	THERMOPLASTIC PAVEMENT MARKING - LINE 4"	FOOT	2508	2508	
* 78000650	THERMOPLASTIC PAVEMENT MARKING - LINE 24"	FOOT	14	14	
* 78011025	GROOVING FOR RECESSED PAVEMENT MARKING 5"	FOOT	2508	2508	
* 78011125	GROOVING FOR RECESSED PAVEMENT MARKING 25"	FOOT	14	14	
X4230710	PORTLAND CEMENT CONCRETE DRIVEWAY PAVEMENT, 6 INCH (SPECIAL)	SQ YD	68	68	
X4401198	HOT-MIX ASPHALT SURFACE REMOVAL, VARIABLE DEPTH	SQ YD	2544	2544	

* SPECIALTY ITEM

* SPECIALTY ITEMS

MODEL - Unified Sheet
FILE NAME - B23_21-500.dgn

CHASTAIN & ASSOCIATES LLC
CONSULTING ENGINEERS

USER NAME = _USER_	DESIGNED -	REVISED -
	DRAWN -	REVISED -
PLOT SCALE = 50.000 ' / in.	CHECKED -	REVISED -
PLOT DATE = 2/29/2024	DATE -	REVISED -

**STATE OF ILLINOIS
DEPARTMENT OF TRANSPORTATION**

**BROADWAY STREET RESURFACING
SUMMARY OF QUANTITIES**

SCALE: SHEET OF SHEETS STA. TO STA.

F.A.S. RTE.	SECTION	COUNTY	TOTAL SHEETS	SHEET NO.
650A	21-00063-00-R5	SHELBY	5	2
			CONTRACT NO. 95955	
			ILLINOIS FED. AID PROJECT	

BITUMINOUS MATERIALS (TACK COAT)			
BROADWAY STREET			
STATION	TO	STATION	POUNDS
1+49.00		13+20.00	2001
TOTAL			2001

TEMPORARY RAMP		
BROADWAY STREET		
STATION		SQ YD
1+49.00		62
6+94.09	(W. NORTH 6TH ST)	3
6+47.50	(E. NORTH 10TH ST)	7
13+20.00		25
TOTAL		97

VALVE BOXES TO BE ADJUSTED			
BROADWAY STREET			
STATION	OFFSET (FT)		EACH
0+57.50	16.5	RT	1
0+66.70	9.1	RT	1
TOTAL			2

* SPECIALTY ITEMS

MODEL: UnPaved.dwg
FILE NAME: 8073_Sht_Schedule.dgn



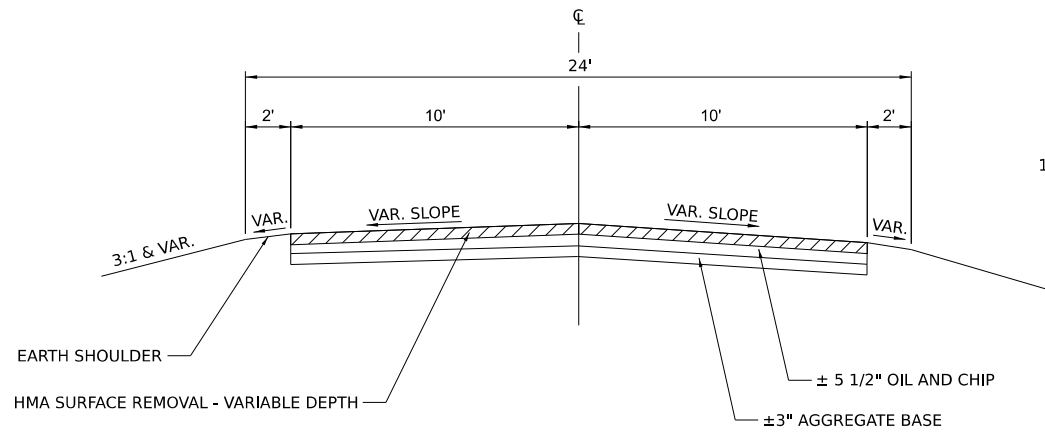
USER NAME = _USER_	DESIGNED -	REVISED -
	DRAWN -	REVISED -
PLOT SCALE = 50.000' / in.	CHECKED -	REVISED -
PLOT DATE = 2/29/2024	DATE -	REVISED -

**STATE OF ILLINOIS
DEPARTMENT OF TRANSPORTATION**

**BROADWAY STREET RESURFACING
SCHEDULE OF QUANTITIES**

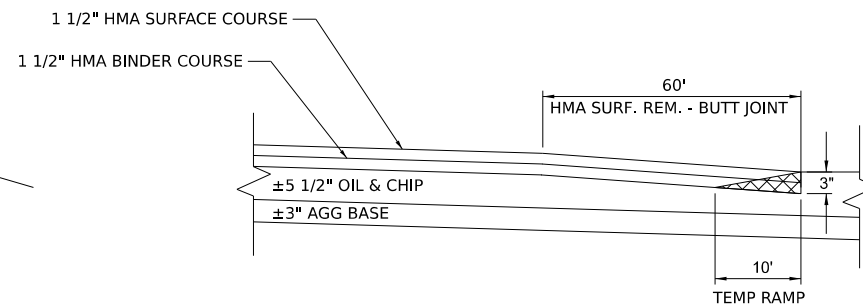
SCALE: SHEET OF SHEETS STA. TO STA.

F.A.S. RTE.	SECTION	COUNTY	TOTAL SHEETS	SHEET NO.
650A	21-00063-00-R5	SHELBY	5	3
			CONTRACT NO. 95955	
		ILLINOIS	FED. AID PROJECT	



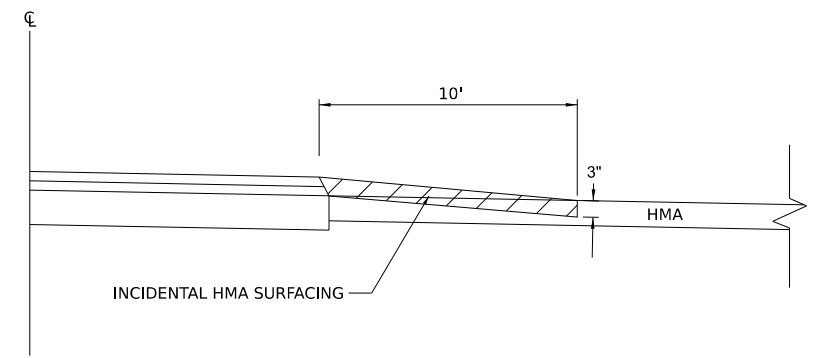
EXISTING TYPICAL SECTION

BROADWAY STREET
STA. 0+49 TO STA. 13+20



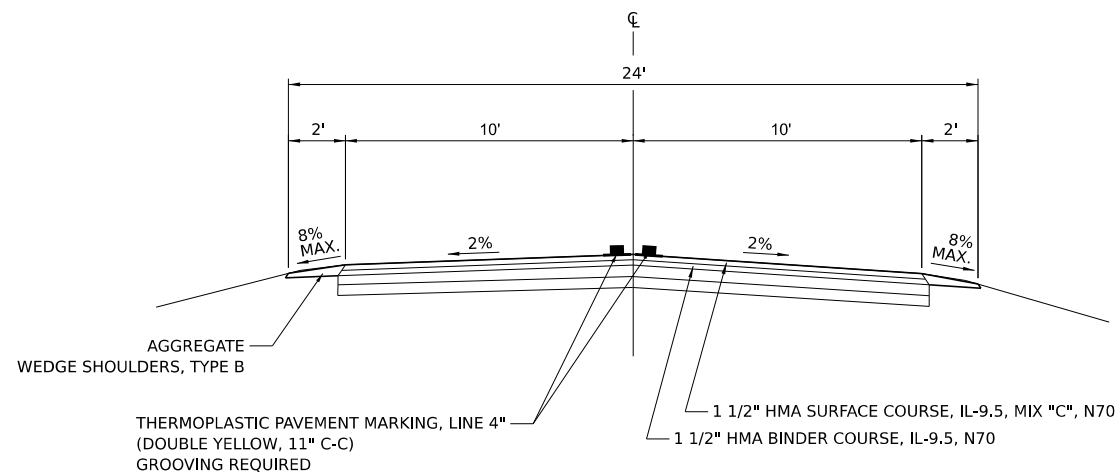
HMA SURFACE REMOVAL - BUTT JOINT

BROADWAY STREET
STA. 1+49 C
STA. 13+20 C



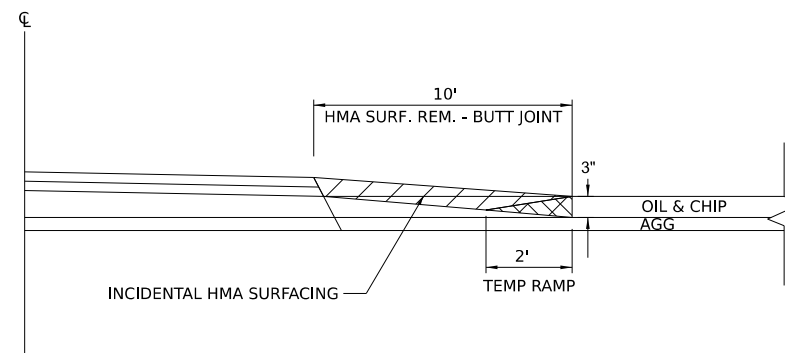
HMA ENTRANCE DETAIL

BROADWAY STREET
STA. 6+00.63 LT
STA. 11+75.30 RT



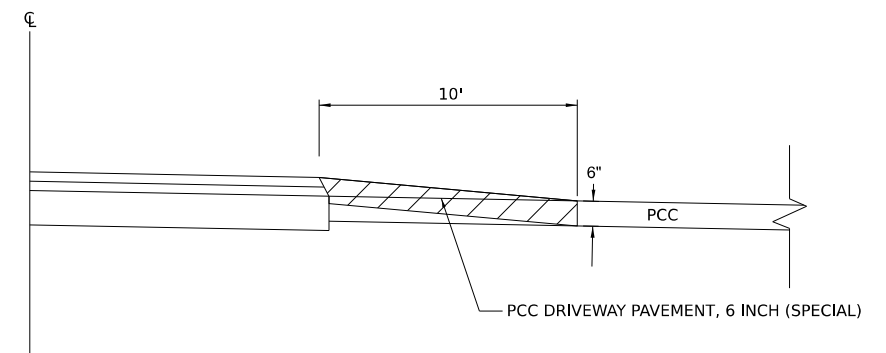
PROPOSED TYPICAL SECTION

BROADWAY STREET
STA. 0+49 TO STA. 13+20



*** HMA SURFACING SIDEROAD DETAIL**

W NORTH 10TH STREET (STA. 6+94.09 LT)
E NORTH 10TH STREET (STA. 6+97.50 RT)



PCC ENTRANCE DETAIL

BROADWAY STREET
STA. 10+58.68 LT
STA. 11+83.16 RT

MIXTURES TABLE

LOCATION(S)	MIXTURE USE(S)	PG	DESIGN AIR VOIDS	MIXTURE COMPOSITION	FRICION AGGREGATE	MIXTURE WEIGHT	QUALITY MANAGEMENT PROGRAM	SUBLOT SIZE	MATERIAL TRANSFER DEVICE (REQUIRED?)
MAINLINE	HMA SURFACE COURSE, IL-9.5, MIX "C", N70 (1.5")	PG 64-22	4.0% @ N=70	IL - 9.5	MIXTURE C	N70	QC/QA	3000	N/A
MAINLINE	HMA BINDER COURSE, IL-9.5FG, N70 (1.5")	PG 64-22	4.0% @ N=70	IL - 9.5FG	N/A	N70	QC/QA	3000	N/A

MODEL: Unpaved.dwg
FILE NAME: 8073_Sht_Details.dgn

CHASTAIN & ASSOCIATES LLC
CONSULTING ENGINEERS

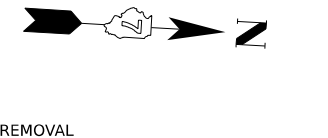
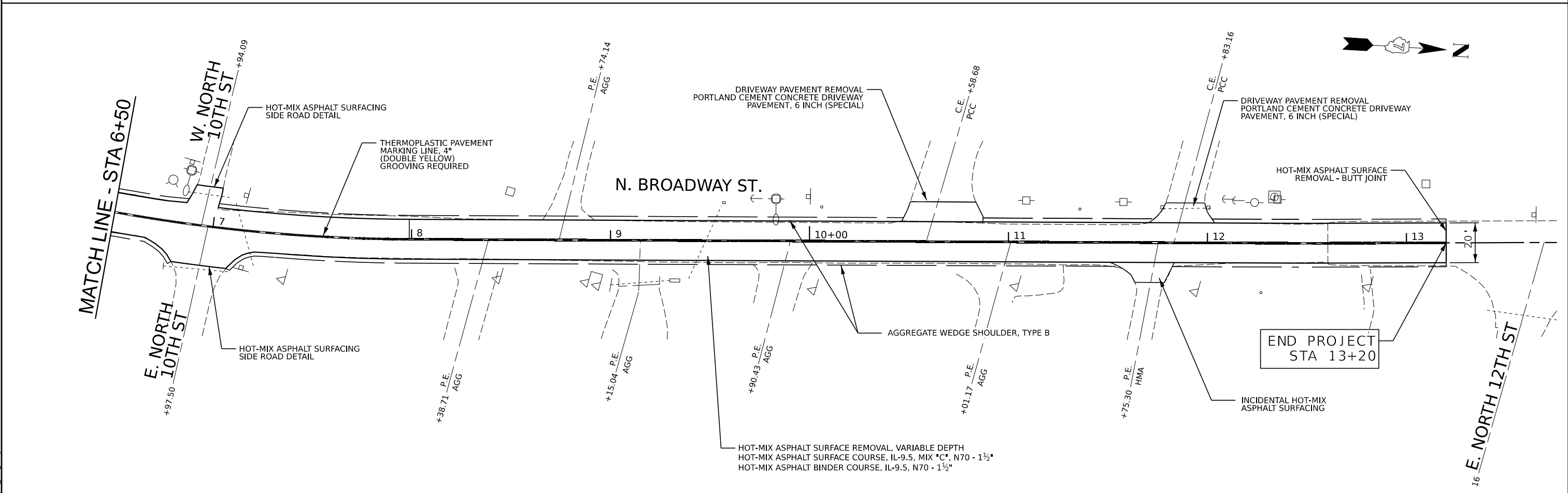
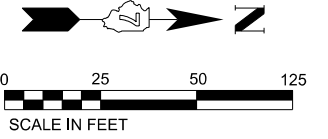
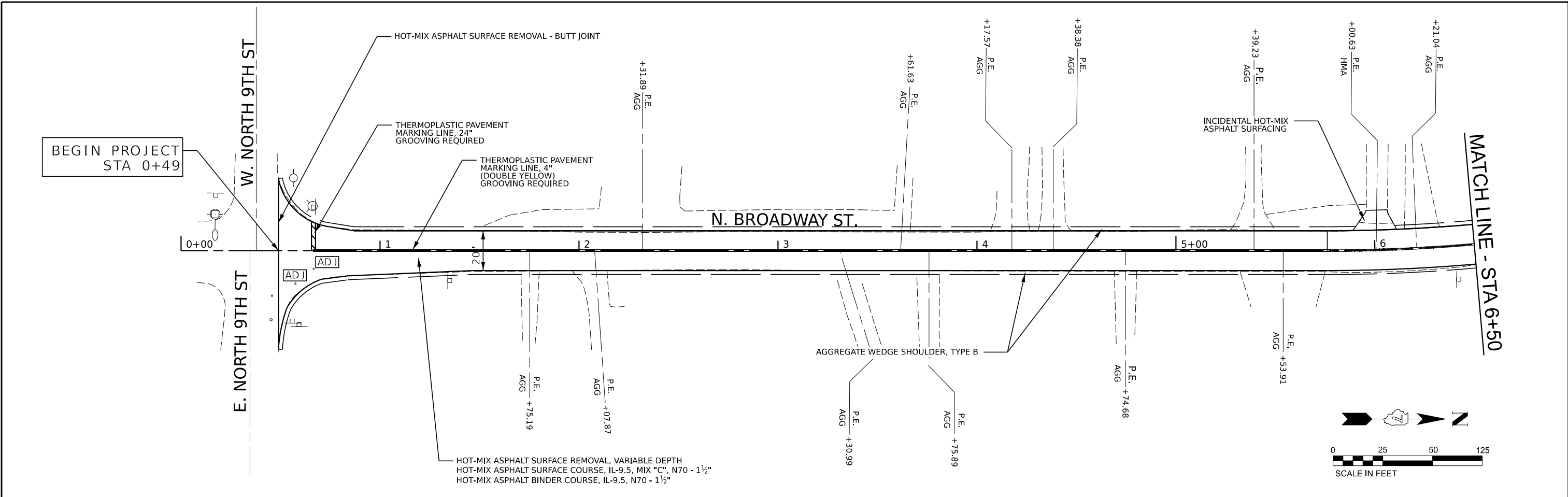
USER NAME = _USER_	DESIGNED -	REVISED -
PLOT SCALE = 20,000' / in.	DRAWN -	REVISED -
PLOT DATE = 2/29/2024	CHECKED -	REVISED -
	DATE -	REVISED -

**STATE OF ILLINOIS
DEPARTMENT OF TRANSPORTATION**

**BROADWAY STREET RESURFACING
TYPICAL SECTIONS AND DETAILS**

SCALE: SHEET OF SHEETS STA. TO STA.

F.A.S. RTE.	SECTION	COUNTY	TOTAL SHEETS	SHEET NO.
650A	21-00063-00-RS	SHELBY	5	4
CONTRACT NO. 95955				
ILLINOIS FED. AID PROJECT				



MODEL: Unimod.dwg
 FILE NAME: 8673_Sht_04a_01.dwg

CHASTAIN & ASSOCIATES LLC
 CONSULTING ENGINEERS
 SERVICE | SOLUTIONS | COMMITMENT

USER NAME = _USER_
 PLOT SCALE = 1" = 50.000' / in.
 PLOT DATE = 2/29/2024

DESIGNED -
 DRAWN -
 CHECKED -
 DATE -

REVISED -
 REVISED -
 REVISED -
 REVISED -

STATE OF ILLINOIS
DEPARTMENT OF TRANSPORTATION

BROADWAY STREET RESURFACING
IMPROVEMENT PLAN
 SCALE: SHEET OF SHEETS STA. TO STA.

F.A.S. RTE.	SECTION	COUNTY	TOTAL SHEETS	SHEET NO.
650A	21-00063-00-RS	SHELBY	5	5
CONTRACT NO. 95955				
ILLINOIS FED. AID PROJECT				