

STATE OF ILLINOIS
 DEPARTMENT OF TRANSPORTATION
 DIVISION OF HIGHWAYS
**PROPOSED
 HIGHWAY PLANS**

F.A.U. RTE.	SECTION	COUNTY	TOTAL SHEETS	SHEET NO.
1521	FAU 1521 22 BJ	KANE	17	1
		ILLINOIS	CONTRACT NO. 62T45	

FOR INDEX OF SHEETS AND HIGHWAY STANDARDS, SEE SHEET NO. 2

THIS PROJECT IS LOCATED IN THE CITY OF AURORA

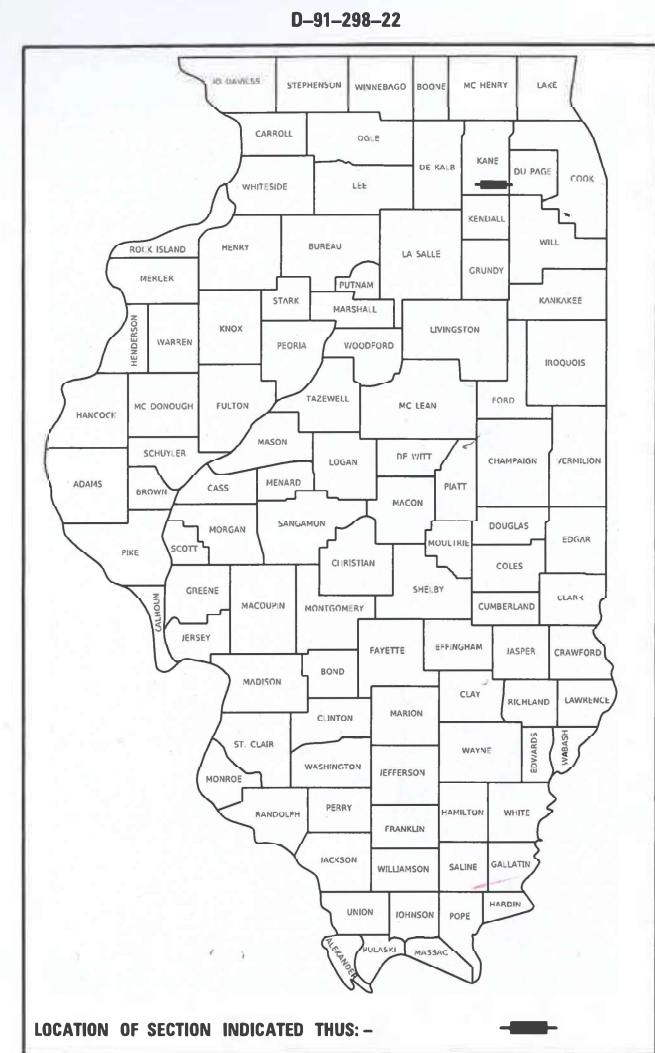
FAU ROUTE 1521: GALENA BOULEVARD
 OVER BLACKBERRY CREEK
 SECTION: FAU 1521 22 BJ
 PROJECT: HBF-PDKWF(324)

BRIDGE DECK OVERLAY
 KANE COUNTY

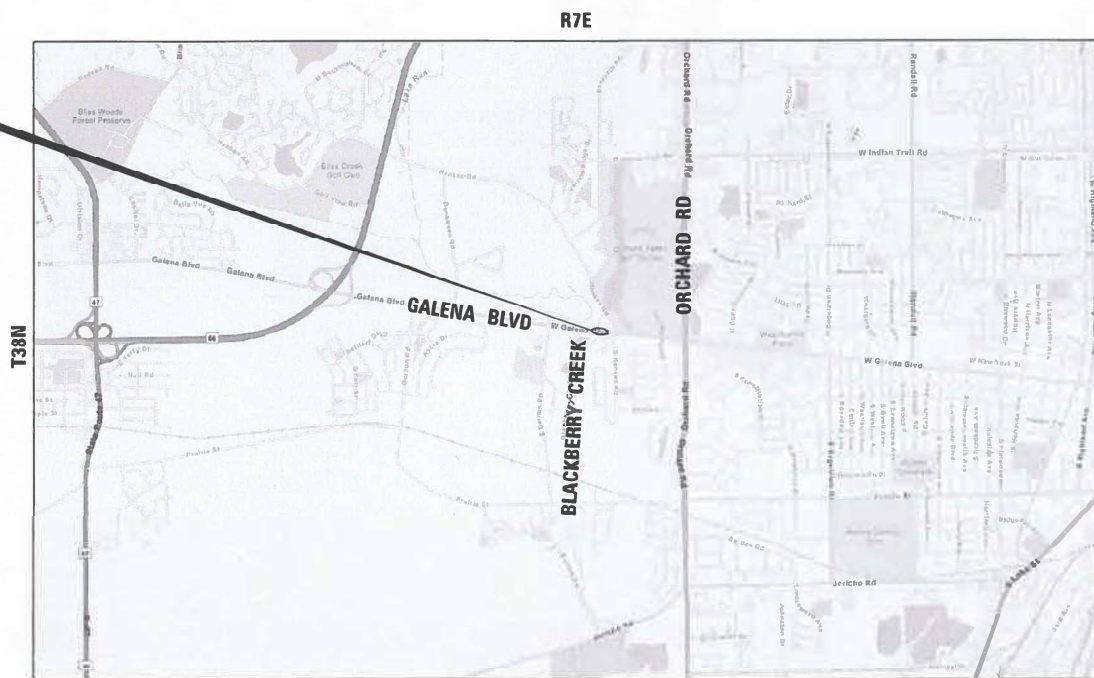
C-91-352-22

TRAFFIC DATA

2018 ADT = 14,600 VPD
 POSTED SPEED LIMIT = 35 MPH
 PRINCIPAL ARTERIAL

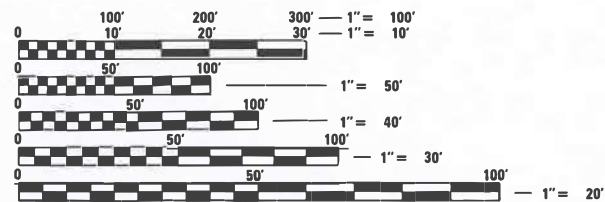


PROJECT LOCATION
 GALENA BLVD OVER
 BLACKBERRY CREEK
 STRUCTURE NO. 045-2015



SUGAR GROVE TOWNSHIP

GROSS LENGTH = 267 FT. = 0.05 MILE
 NET LENGTH = 267 FT. = 0.05 MILE



FULL SIZE PLANS HAVE BEEN PREPARED USING STANDARD ENGINEERING SCALES. REDUCED SIZED PLANS WILL NOT CONFORM TO STANDARD SCALES. IN MAKING MEASUREMENTS ON REDUCED PLANS, THE ABOVE SCALES MAY BE USED.

J.U.L.I.E.
 JOINT UTILITY LOCATION INFORMATION FOR EXCAVATION
 1-800-892-0123
 OR 811

PROJECT ENGINEER: DAN WILGREEN (847) 705-7240
 PROJECT MANAGER: FAWAD AQUEEL

CONTRACT NO. 62T45



Alex Lane
 ALEXANDER CARL LANE, P.E.
 IL LIC. NO. 062-063261
 EXP: 11/30/2025
 DATE: 12/1/2023

THIS SEAL AND SIGNATURE PERTAINS TO SHEETS 1 TO 7

STATE OF ILLINOIS
 DEPARTMENT OF TRANSPORTATION

SUBMITTED Jan 30 20 24
Jonathan Joe
 REGIONAL ENGINEER

March 22, 2024
Steph M. A. Etk
 ENGINEER OF DESIGN AND ENVIRONMENT

March 22, 2024
Steph M. A. Etk
 DIRECTOR OF HIGHWAYS PROJECT IMPLEMENTATION

PRINTED BY THE AUTHORITY
 OF THE STATE OF ILLINOIS

INFRASTRUCTURE ENGINEERING | INCORPORATED
 1 South Wacker | Suite 2650 | Chicago, IL 60606
 P 312.425.9560 | F 312.425.9564 | www.infrastructure-eng.com
 CONTACT: ALEXANDER LANE (312) 477-0620

INDEX OF SHEETS

SHEET NO.	TITLE
1	COVER SHEET
2	INDEX OF SHEETS, STATE STANDARDS, AND GENERAL NOTES
3	SUMMARY OF QUANTITIES
4	TYPICAL SECTIONS
5-6	DETOUR PLANS
7	ROADWAY AND PAVEMENT MARKING PLAN
8-11	STRUCTURAL DRAWINGS - S.N. 045-2015
12	TRAFFIC CONTROL AND PROTECTION FOR SIDE ROADS, INTERSECTIONS, AND DRIVEWAYS (TC-10)
13	BUTT JOINT AND HMA TAPER DETAILS (BD-32)
14	TYPICAL APPLICATIONS RAISED REFLECTIVE PAVEMENT MARKERS (SNOW-PLOW RESISTANT) (TC-11)
15	TYPICAL PAVEMENT MARKINGS (TC-13)
16	DETOUR SIGNING FOR CLOSING STATE HIGHWAYS (TC-21)
17	ARTERIAL ROAD INFORMATION SIGN (TC-22)

STATE STANDARDS

STANDARD NO.	DRAWING NAME
000001-08	STANDARD SYMBOLS, ABBREVIATIONS AND PATTERNS
701006-05	OFF-RD OPERATIONS, 2L, 2W, 15' (4.5 m) TO 24" (600 mm) FROM PAVEMENT EDGE
701301-04	LANE CLOSURE, 2L, 2W, SHORT TIME OPERATIONS
701311-03	LANE CLOSURE 2L, 2W, MOVING OPERATIONS- DAY ONLY
701426-09	LANE CLOSURE, MULTILANE, INTERMITTENT OR MOVING OPER., FOR SPEEDS ≥ 45 MPH
701427-05	LANE CLOSURE, MULTILANE, INTERMITTENT OR MOVING OPER., FOR SPEEDS ≤ 40 MPH
701501-06	URBAN LANE CLOSURE, 2L, 2W, UNDIVIDED
701901-09	TRAFFIC CONTROL DEVICES

HMA TABLE

HOT-MIX ASPHALT MIXTURE REQUIREMENTS		QUALITY MANAGEMENT PROGRAM (QMP)
MIXTURE TYPE	AIR VOIDS @ Ndes	
BUTT JOINT		
HOT-MIX ASPHALT SURFACE COURSE, MIX "D", IL-9.5, N70, 1-1/2"	4% @ 70 Gyr	QC/QA
QMP DESIGNATION: QUALITY CONTROL/ QUALITY ASSURANCE (QC/QA): QUALITY CONTROL FOR PERFORMANCE (QCP): PAY FOR PERFORMANCE (PFP)		

MIXTURE REQUIREMENT NOTES:

- THE UNIT WEIGHT USED TO CALCULATE ALL HMA SURFACE MIXTURE QUANTITIES IS 112 LBS/SQ YD/IN.
- THE "AC TYPE" FOR POLYMERIZED HMA MIXES SHALL BE "SBS/SBR PG 76 -22" AND FOR NON-POLYMERIZED HMA THE "AC TYPE" SHALL BE "PG 64 -22" UNLESS MODIFIED BY RECLAIMED MATERIALS SPECIFICATIONS.

GENERAL NOTES

- THE EXACT LOCATION OF ALL UTILITIES SHALL BE FIELD VERIFIED BY THE CONTRACTOR BEFORE ORDERING ANY MATERIALS AND STARTING ANY WORK. FOR LOCATIONS OF UTILITIES, LOCALLY OWNED EQUIPMENT, LEASED ENFORCEMENT CAMERA SYSTEM FACILITIES AND IDOT UNDERGROUND FACILITIES, CONTACT THE LOCAL COUNTIES, MUNICIPALITIES AND IDOT FOR LOCATES.
- MEADE ELECTRIC COMPANY, THE IDOT DISTRICT ONE ELECTRICAL MAINTENANCE CONTRACTOR, LOCATES IDOT ELECTRICAL EQUIPMENT AND UNDERGROUND CABLES. CALL 773-287-7672 FOR THE INITIAL LOCATE. REQUEST FOR LOCATES OF PREVIOUSLY MARKED FACILITIES MAY BE AT THE CONTRACTOR'S EXPENSE.
- IN ADDITION TO FIELD REVIEW AND AERIAL DATA, PLAN DIMENSIONS AND DETAILS RELATIVE TO THE EXISTING FACILITIES HAVE BEEN TAKEN FROM EXISTING PLANS AND ARE SUBJECT TO CONSTRUCTION VARIATIONS. PLAN DIMENSIONS AND DETAILS RELATIVE TO EXISTING PLANS ARE SUBJECT TO ROUTINE VARIATIONS. IT SHALL BE THE CONTRACTOR'S RESPONSIBILITY TO VERIFY EXISTING DIMENSIONS AND DETAILS AFFECTING NEW CONSTRUCTION AND MAKE NECESSARY APPROVED ADJUSTMENTS PRIOR TO CONSTRUCTION OR ORDERING MATERIALS. SUCH VARIATIONS SHALL NOT BE CAUSE FOR ADDITIONAL COMPENSATION FOR A CHANGE IN THE SCOPE OF WORK. HOWEVER, THE CONTRACTOR WILL BE PAID FOR THE QUANTITY ACTUALLY FURNISHED AT THE BID PRICE FOR THE WORK.
- THE CONTRACTOR WILL NOT BE ALLOWED TO SET UP A YARD OR FIELD OFFICE ON STATE PROPERTY WITHOUT WRITTEN PERMISSION FROM THE DEPARTMENT.
- IT SHALL BE THE CONTRACTOR'S RESPONSIBILITY TO VERIFY ALL DIMENSIONS AND CONDITIONS EXISTING IN THE FIELD PRIOR TO BEGINNING CONSTRUCTION AND ORDERING MATERIALS.
- THE CONTRACTOR SHALL TAKE ALL NECESSARY PRECAUTIONS FOR THE PROTECTION OF EXISTING PLANT MATERIAL FOR WHICH THE CONTRACT DOES NOT PROVIDE REMOVAL. THE PROTECTION OF EXISTING PLANT MATERIAL AND THE REPAIR OR REPLACEMENT OF EXISTING PLANT MATERIAL DAMAGED BY THE CONTRACTOR SHALL BE DONE IN ACCORDANCE WITH THE REQUIREMENTS OF SECTION 201 OF THE STANDARD SPECIFICATIONS.
- THE DEPARTMENT HAS NOT OBTAINED ANY PERMITS FOR OFFSITE BORROW, WASTE, USE (BWU) AREAS. PRIOR TO WORKING IN BWU AREAS, IF THE CONTRACTOR CHOOSES TO USE ACTIVITIES REQUIRING PERMITS IT IS THE CONTRACTOR'S RESPONSIBILITY TO SECURE THE PROPER PERMITS. IN ADDITION TO THE BORROW REVIEW (BDE 2289) AND USE/WASTE REVIEW (BDE 2290) SUBMITTALS, THE CONTRACTOR SHALL SUBMIT AN EROSION AND SEDIMENT CONTROL (ESC) PLAN FOR EVERY BWU SITE TO THE DEPARTMENT FOR ACCEPTANCE. GUIDELINES FOR ACCEPTABLE BWU PRACTICES CAN BE FOUND IN SECTION 11.G.1. THE COST OF ALL MATERIALS AND LABOR NECESSARY TO COMPLY WITH THE ABOVE PROVISIONS TO PREPARE AND IMPLEMENT ESC PLANS WILL NOT BE PAID FOR SEPARATELY, BUT SHALL BE CONSIDERED AS INCLUDED IN THE CONTRACT UNIT PRICES AND NO ADDITIONAL COMPENSATION WILL BE ALLOWED.
- THE CONTRACTOR SHALL CONTACT KALPANA KANNAN-HOSADURGA, THE DISTRICT ONE TRAFFIC CONTROL SUPERVISOR AT KALPANA.KANNAN-HOSADURGA@ILLINOIS.GOV A MINIMUM OF 72 HOURS IN ADVANCE OF BEGINNING WORK.
- THE RESIDENT ENGINEER SHALL CONTACT WALTER CZARNY, AREA TRAFFIC FIELD ENGINEER, AT WALTER.CZARNY@ILLINOIS.GOV A MINIMUM OF TWO (2) WEEKS PRIOR TO THE PLACEMENT OF PERMANENT PAVEMENT MARKINGS.
- THE RESIDENT ENGINEER SHALL CONTACT THE CITY OF AURORA, TIM WEIDNER AT WEIDNERT@AURORA.IL.US AND ROOPA ANJANAPPA AT ANJANAPPA@AURORA.IL.US TWO WEEKS AHEAD OF THE CLOSURE TO NOTIFY EMERGENCY SERVICES AND COMMUNICATIONS TEAM OF THE CLOSURE.
- THE DEPARTMENT HAS DETERMINED THAT IN STREAM WORK IS NOT REQUIRED FOR THE WORK SPECIFIED IN THIS CONTRACT. THE DEPARTMENT HAS NOT OBTAINED A USACE PERMIT. IF THE CONTRACTOR CHOOSES TO USE ACTIVITIES REQUIRING AN USACE PERMIT, IT IS THE CONTRACTOR'S RESPONSIBILITY TO SECURE THE PROPER USACE PERMITS. THE COST OF ALL MATERIALS AND LABOR NECESSARY TO SECURE AND COMPLY WITH A USACE PERMIT FOR CONTRACTOR'S ACTIVITIES WILL NOT BE PAID FOR SEPARATELY, BUT SHALL BE CONSIDERED AS INCLUDED IN THE UNIT BID PRICES OF THE CONTRACT AND NO ADDITIONAL COMPENSATION WILL BE ALLOWED.
- THE CONTRACTOR SHALL USE CARE IN REMOVING OR EXCAVATING NEAR ALL EXISTING ITEMS WHICH WILL REMAIN. ANY DAMAGE DONE TO EXISTING ITEMS BY THE CONTRACTOR SHALL BE REPAIRED AT THE CONTRACTOR'S EXPENSE.
- SAW CUTTING PRIOR TO ANY REMOVAL ITEMS NOTED ON THE PLANS OR DIRECTED BY THE ENGINEER SHALL BE CONSIDERED INCLUDED IN THE COST OF THE ITEMS BEING REMOVED.
- FOR WORK OUTSIDE THE LIMITS OF BRIDGE APPROACH PAVEMENT. ALL REFERENCES IN THE HIGHWAY STANDARDS AND STANDARD SPECIFICATIONS FOR REINFORCEMENT, DOWEL BARS AND TIE BARS IN PAVEMENT SHALL BE EPOXY COATED UNLESS NOTED ON THE PLANS.
- DOUBLE LANE MARKERS ARE TO BE USED AS SHOWN ON THE DISTRICT ONE DETAIL "TYPICAL APPLICATIONS-RAISED REFLECTIVE PAVEMENT MARKERS (SNOW-PLOW RESISTANT)" SHOWN IN PLANS.
- THE CENTERLINE IS FOR INFORMATION ONLY.
- THE "ROAD CONSTRUCTION AHEAD" SIGNS SHALL REMAIN INSTALLED UNTIL THE COMPLETION OF THE PROJECT OR WHEN NO ROADWAY HAZARDS REMAIN WITHIN THE WORK ZONE.
- CHANGEABLE MESSAGE SIGNS SHALL BE INSTALLED TWO WEEKS PRIOR TO ALL ROAD CLOSURE, TRAFFIC STAGE CHANGES, AND NEW TRAFFIC SIGNAL TURN-ON EVENTS ON EACH APPROACH OF THE EFFECTED ROADWAY TO WARN MOTORISTS OF THE UPCOMING EVENT. THE SIGNS SHALL BE REMOVED TWO WEEKS THEREAFTER UNLESS THE SIGNS ARE NEEDED AGAIN FOR A SUBSEQUENT FUTURE EVENT THAT WILL OCCUR WITHIN 2 WEEKS ON THE SAME APPROACH OF THE EFFECTED ROADWAY. THE SIGN LOCATIONS SHALL BE (DETERMINED BY THE ENGINEER) PLACED AS DIRECTED BY THE ENGINEER.

MODEL: Default
 FILE NAME: P:\22122-4675-00 IDOT Various Phase 2 (ITB 206-002)1\WO 02 827151DC\NCADD_Sheets\827151-511T-CEN-01.dgn

INFRASTRUCTURE ENGINEERING INCORPORATED
 1 South Wacker | Suite 2650 | Chicago, IL 60606
 P 312.425.9560 | F 312.425.9564 | www.infrastructure-eng.com

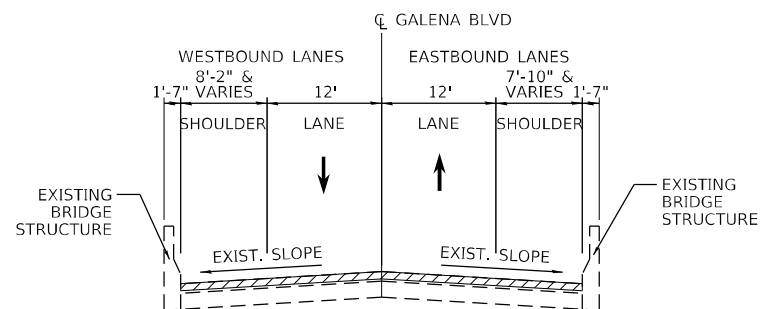
USER NAME = ALane	DESIGNED - KEK	REVISED -
	DRAWN - KEK	REVISED -
PLOT SCALE = 20.0000' / in.	CHECKED - ACL	REVISED -
	DATE - 01/18/2024	

**STATE OF ILLINOIS
DEPARTMENT OF TRANSPORTATION**

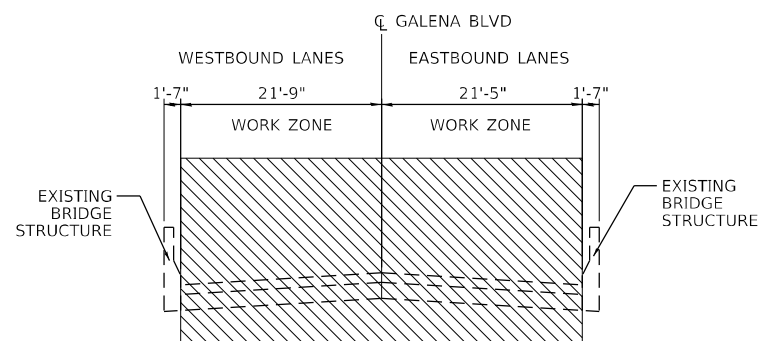
**INDEX OF SHEETS, STATE STANDARDS, AND GENERAL NOTES
GALENA BOULEVARD OVER BLACKBERRY CREEK**

SCALE: _____ STA. 0 TO STA. 0

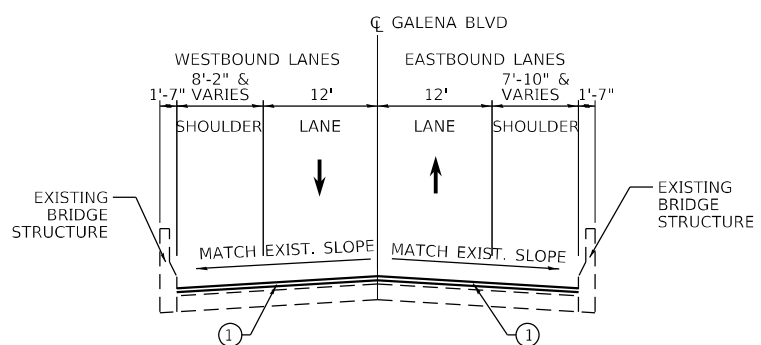
F.A.U. RTE.	SECTION	COUNTY	TOTAL SHEETS	SHEET NO.
1521	FAU 1521 22 B1	COOK	17	2
CONTRACT NO. 62T45				
ILLINOIS FED. AID PROJECT				



EXISTING TYPICAL CROSS SECTION
ON SN 045-2015



STAGE 1 CONSTRUCTION
ON SN 045-2015



PROPOSED TYPICAL CROSS SECTION
STA. 14+99 TO STA. 16+96
ON SN 045-2015

LEGEND

- ① BRIDGE DECK LATEX CONCRETE OVERLAY, 2 1/2"
- WORK AREA
- BRIDGE DECK SCARIFICATION, 3/4"

MAINTENANCE OF TRAFFIC - STAGE 1

- CONSTRUCTION:
1. COMPLETE BRIDGE DECK REPAIRS AND OVERLAY ON THE ENTIRE BRIDGE.
- MAINTENANCE OF TRAFFIC
2. CLOSE THE BRIDGE TO TRAFFIC. A DETOUR OF GALENA BLVD WILL BE IMPLEMENTED.

MODEL: P:\646\11... FILE NAME: P:\646\11... I:\DOT_Verbose_Phase 2 (ITB)_206-002\1\WO 02_63T151DGN\CADD_Sheets\62T45-51\F1-TYP-C1.dgn

INFRASTRUCTURE ENGINEERING INCORPORATED
1 South Wacker | Suite 2650 | Chicago, IL 60606
P 312.425.9598 | F 312.425.9598 | www.infrastructure-eng.com

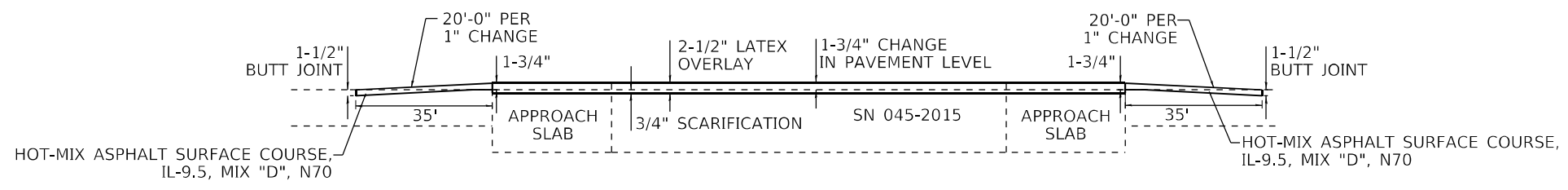
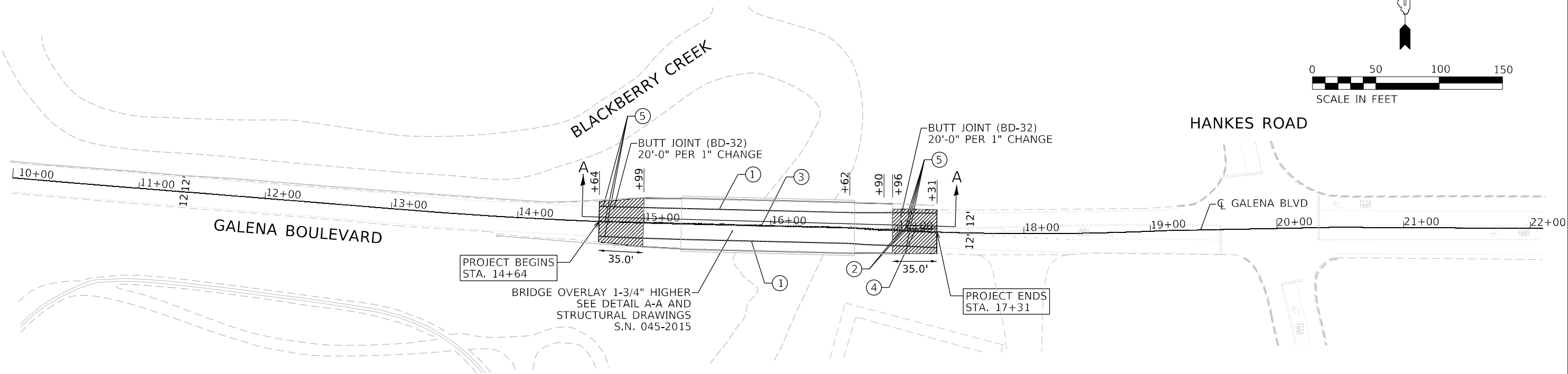
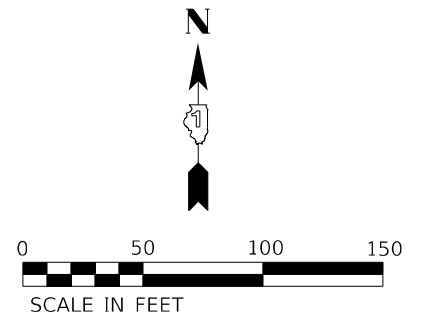
USER NAME = Alane	DESIGNED - KEK	REVISED -
PLOT SCALE = 20,0000 * / in.	DRAWN - KEK	REVISED -
	CHECKED - ACL	REVISED -
	DATE - 01/16/2024	

**STATE OF ILLINOIS
DEPARTMENT OF TRANSPORTATION**

**TYPICAL SECTIONS
GALENA BOULEVARD OVER BLACKBERRY CREEK**

SCALE: STA. 0 TO STA. 0

F.A.U. RTE.	SECTION	COUNTY	TOTAL SHEETS	SHEET NO.
1521	FAU 1521 22 BJ	COOK	17	4
CONTRACT NO. 62T45				
ILLINOIS FED. AID PROJECT				



DETAIL A-A

PAVEMENT MARKING LEGEND

- ① LINE 4", SOLID WHITE - EDGE LINE
- ② LINE 2 @ 4" SOLID YELLOW, 11" C-C - CENTERLINE
- ③ LINE 4", SOLID/SKIP-DASH, YELLOW (10' LINE - 30' SPACE) - PASSING LANE
- ④ LINE 12", SOLID, YELLOW - PAINTED MEDIANS DIAGONALS
- ⑤ RAISED REFLECTIVE PAVEMENT MARKERS - IN HMA ONLY

LEGEND

HMA ASPHALT SURFACE REMOVAL - BUTT JOINT

NOTES

1. ALL FINAL PAVEMENT MARKINGS SHALL BE MODIFIED URETHANE
2. ALL FINAL PAVEMENT MARKINGS SHALL BE PLACED IN ACCORDANCE WITH TC-13 "DISTRICT ONE TYPICAL PAVEMENT MARKINGS" STANDARD DETAIL.
3. ALL RAISED REFLECTIVE PAVEMENT MARKERS SHALL BE PLACED IN ACCORDANCE WITH TC-11 "TYPICAL APPLICATIONS RAISED REFLECTIVE PAVEMENT MARKERS (SNOW-PLOW RESISTANT)" STANDARD DETAIL.

MODEL: P:\6461\... FILE NAME: P:\6461\... Phase 2 - ITRB_206-002\1\WO_02_637151\BID\CONCARD_Sheets\637151-PLAN\01.dwg

	USER NAME = Alane PLOT SCALE = 80,0000 * / in.	DESIGNED - KEK DRAWN - KEK CHECKED - ACL DATE - 01/16/2024	REVISED - REVISED - REVISED -	STATE OF ILLINOIS DEPARTMENT OF TRANSPORTATION	ROADWAY AND PAVEMENT MARKING PLAN GALENA BOULEVARD OVER BLACKBERRY CREEK	F.A.U. RTE. 1521 SECTION FAU 1521 22 BJ COUNTY COOK ILLINOIS FED. AID PROJECT	TOTAL SHEETS 17 SHEET NO. 7 CONTRACT NO. 62T45
	SCALE: _____ STA. 0 TO STA. 0						

Existing Structure: SN 045-2015 was built as FAU 1521, Section X-1-R at Sta. 283+26.00 in 1995. Superstructures consist of a continuous reinforced concrete slab on three span. Substructures consist of integral abutments and piers on steel H-piles. Length is 136'-6" back-to-back abutments. Out-to-out deck width is 43'-2".

Traffic to be detoured during construction.

No Salvage.

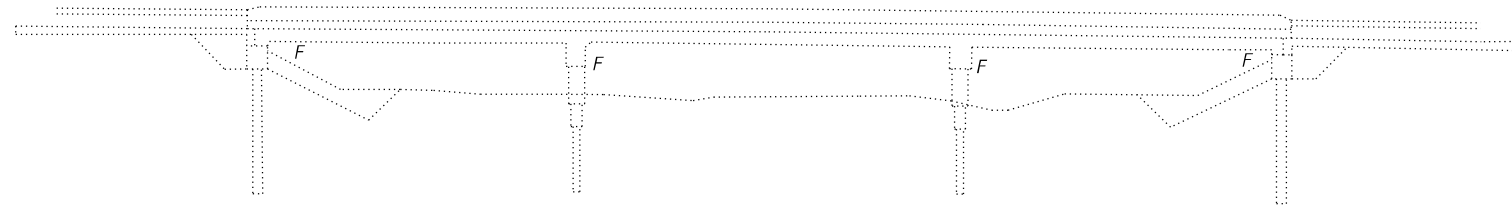


Pankaj Kumar.

PANKAJ KUMAR, S.E.
NO. 081-007577
EXP. DATE: 11/30/2024

INDEX OF SHEETS

1. General Plan and Elevation
2. General Notes, Scope of Work, & Bill of Materials
3. Deck Plan and Sections
4. Approach Pavement Plan



ELEVATION
(Looking North)

HORIZONTAL CURVE DATA

P.I. STA. = 282+19.55
 $\Delta = 4^{\circ}17'49.67''$ LT
 $D = 0^{\circ}46'30.70''$
 $R = 7,391.16$
 $T = 277.30$
 $L = 554.33$
 $E = 5.20$
 $S.E. = N.C.$

DESIGN STRESSES

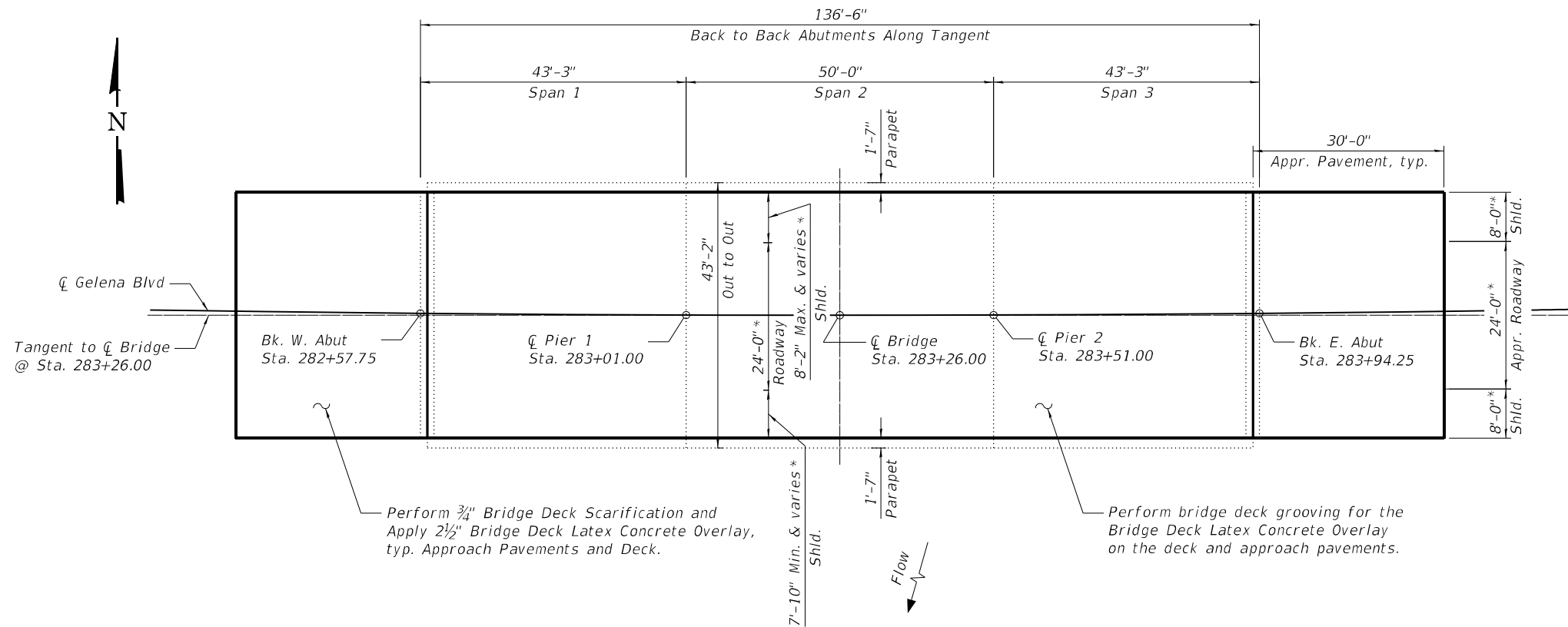
Existing Construction
 $f'c = 3,500$ psi (Concrete)
 $f_y = 60,000$ psi (Reinforcement)

DESIGN SPECIFICATIONS

2002 AASHTO Standard Specifications for Highway Bridges (17th Edition)

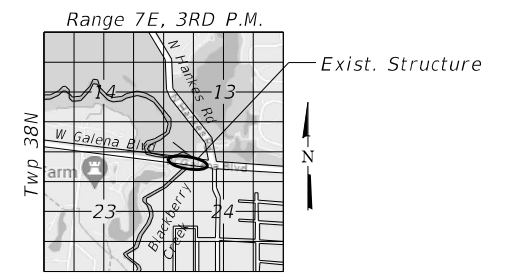
LOADING HS20-44

No future wearing surface allowed



PLAN

* Radial dimension



LOCATION SKETCH

GENERAL PLAN AND ELEVATION
GALENA BOULEVARD OVER BLACKBERRY CREEK
FAU 1521 SECTION FAU 1521 22 BJ
KANE COUNTY
STATION 283+26.00
STRUCTURE NO. 045-2015

MODEL: P:\6451\1521\1521-22-BJ.dwg; FILE NAME: P:\6451\1521\1521-22-BJ.dwg; USER: PANKAJ; DATE: 1/17/2024

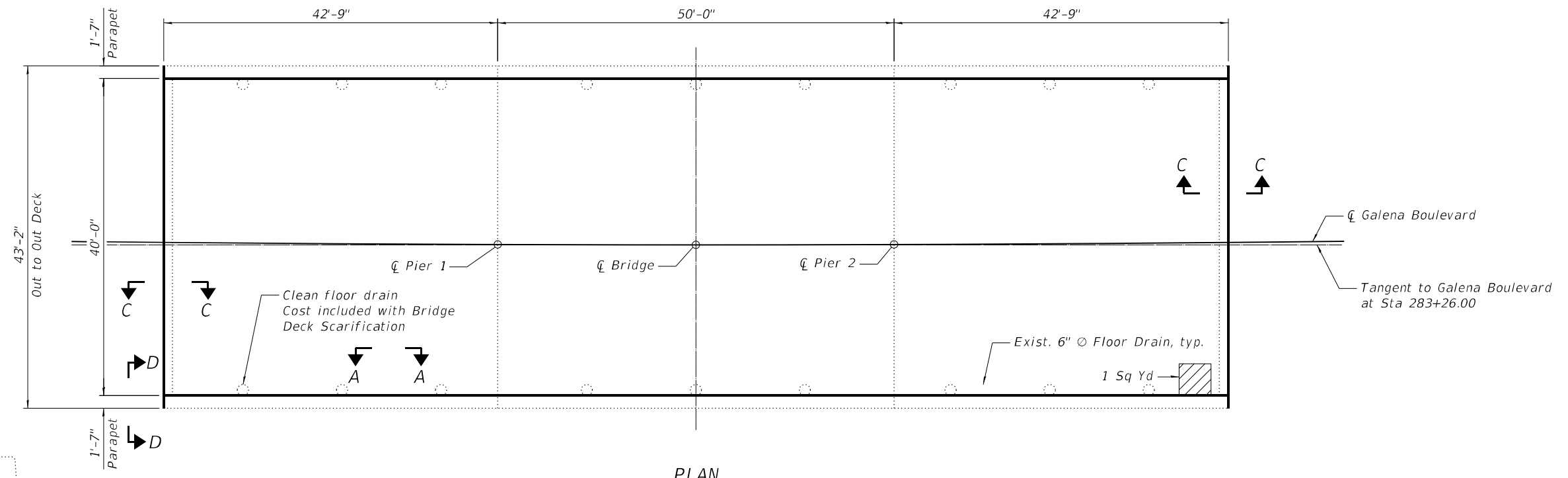
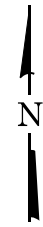
INFRASTRUCTURE ENGINEERING INCORPORATED
 1 South Wacker | Suite 2650 | Chicago, IL 60606
 P: 312.425.9598 | F: 312.425.9594 | www.infrastructure-eng.com

USER NAME = Alane	DESIGNED - TY	REVISED -
CHECKED - PK	REVISIONS -	
PLOT SCALE =	DRAWN - TY	REVISED -
PLOT DATE = 1/17/2024	CHECKED - PK	REVISED -

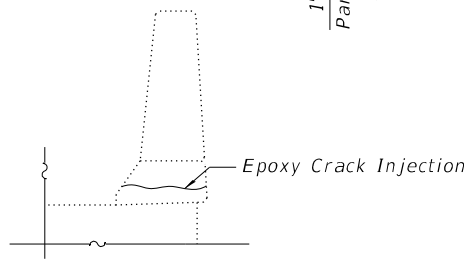
STATE OF ILLINOIS
DEPARTMENT OF TRANSPORTATION

F.A.U. RTE.	SECTION	COUNTY	TOTAL SHEETS	SHEET NO.
1521	FAU 1521 22 BJ	KANE	17	8

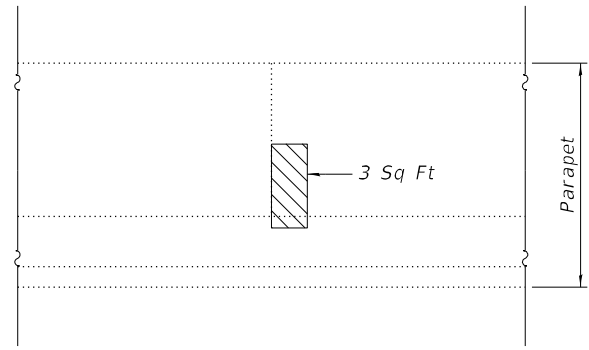
CONTRACT NO. 62T45	
ILLINOIS	FED. AID PROJECT



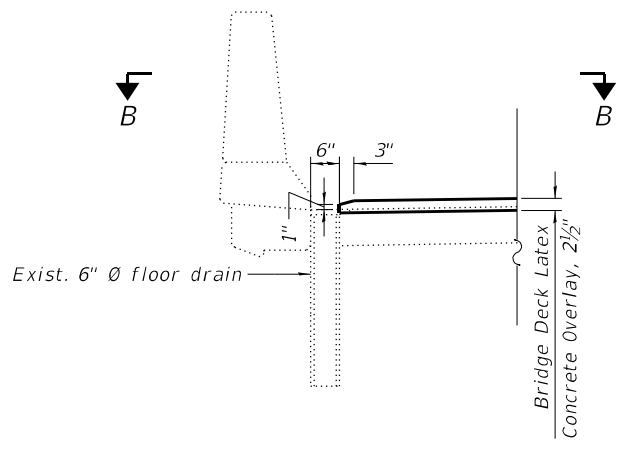
PLAN



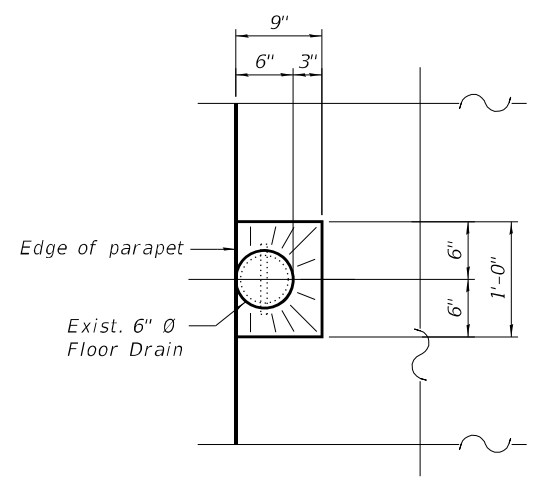
SECTION D-D



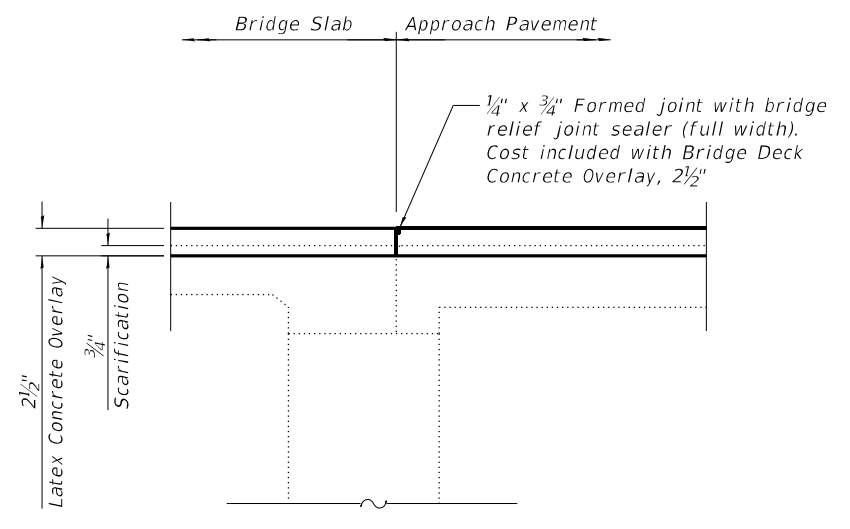
SECTION A-A



SECTION THRU FLOOR DRAINS
(18 Locations)



SECTION B-B



SECTION C-C

BILL OF MATERIAL

ITEM	UNIT	TOTAL
Bridge Deck Grooving	Sq Yd	577
Protective Coat	Sq Yd	607
Epoxy Crack Injection	Foot	4
Bridge Deck Latex Concrete Overlay, 2 1/2 Inches	Sq Yd	607
Bridge Deck Scarification, 3/4"	Sq Yd	607
Structural Repair of Concrete (Depth Equal to or Less Than 5 Inches)	Sq Ft	3
Deck Slab Repair (Full Depth, Type 1)	Sq Yd	1

LEGENDS

- Structural Repair of Concrete (Depth Equal To Or Less Than 5 Inches)
- Deck Slab Repair (Full Depth)

NOTES

1. Quantity and limits of Deck Slab Repairs and Structural Repair of Concrete shown herein are estimated from a survey completed by the District. Actual limits shall be determined in the field by the Engineer and noted in the As-Built Plans.
2. Protective Coat shall be applied to the new concrete overlay areas.

MODEL: D:\p4\h\1\... INFRASTRUCTURE ENGINEERING INCORPORATED

INFRASTRUCTURE ENGINEERING INCORPORATED
1 South Wacker | Suite 2650 | Chicago, IL 60606
P 312.425.9598 | F 312.425.9598 | www.infrastructure-eng.com

USER NAME = Alane	DESIGNED - TY	REVISED -
PLOT SCALE =	CHECKED - PK	REVISED -
PLOT DATE = 3/8/2024	DRAWN - TY	REVISED -
	CHECKED - PK	REVISED -

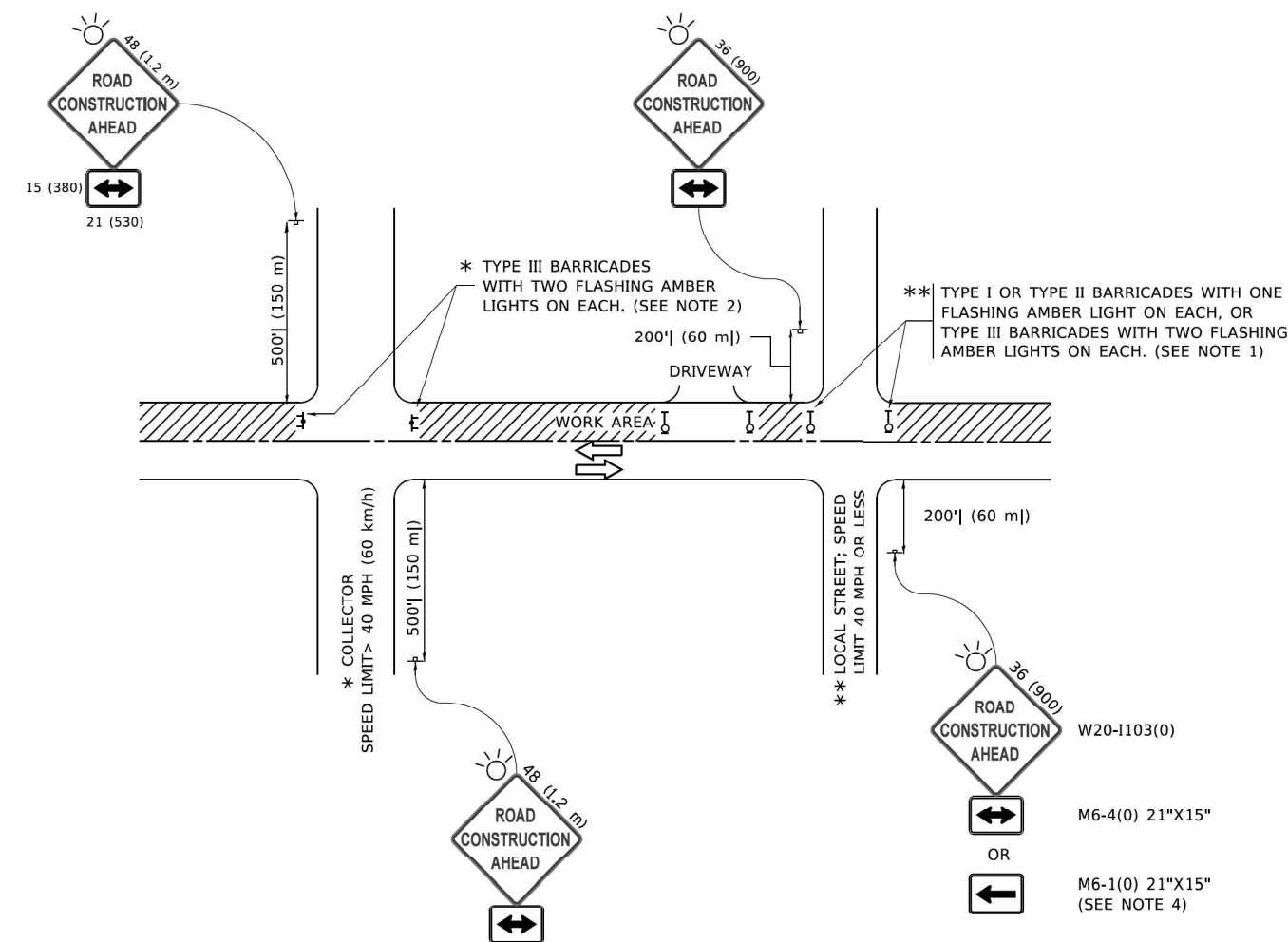
**STATE OF ILLINOIS
DEPARTMENT OF TRANSPORTATION**

**DECK PLAN AND SECTIONS
STRUCTURE NO. 045-2015**

SHEET 3 OF 4 SHEETS

F.A.U. RTE.	SECTION	COUNTY	TOTAL SHEETS	SHEET NO.
1521	FAU 1521 22 BJ	KANE	17	10
CONTRACT NO. 62T45				

ILLINOIS FED. AID PROJECT



NOTES:

1. SIDE ROAD WITH A SPEED LIMIT OF 40 MPH (60 km/h) OR LESS AS SHOWN ON THE DRAWING AND AS DIRECTED BY THE ENGINEER:
 - a) ONE "ROAD CONSTRUCTION AHEAD" SIGN 36 x 36 (900x900) WITH A FLASHER MOUNTED ON IT APPROXIMATELY 200' (60 m) IN ADVANCE OF THE MAIN ROUTE.
 - b) THE CLOSED PORTION OF THE MAIN ROUTE SHALL BE PROTECTED BY BLOCKING WITH TYPE I, TYPE II OR TYPE III BARRICADES, 1/3 OF THE CROSS SECTION OF THE CLOSED PORTION.
2. SIDE ROAD WITH A SPEED LIMIT GREATER THAN 40 MPH (60 km/h) AS SHOWN ON THE DRAWING AND AS DIRECTED BY THE ENGINEER:
 - a) ONE "ROAD CONSTRUCTION AHEAD" SIGN 48 x 48 (1.2 m x 1.2 m) WITH A FLASHER MOUNTED ON IT APPROXIMATELY 500' (150 m) IN ADVANCE OF THE MAIN ROUTE.
 - b) BLOCKING WITH TYPE III BARRICADES, 1/2 OF THE CROSS SECTION OF THE CLOSED PORTION.
3. CONES MAY BE SUBSTITUTED FOR BARRICADES OR DRUMS AT HALF THE SPACING DURING DAY OPERATIONS. CONES SHALL BE A MINIMUM OF 28 (710) IN HEIGHT.
4. SIGNING AND THE WORK ZONE, A SINGLE HEADED ARROW (M6-1) SHALL BE USED IN LIEU OF THE DOUBLE HEADED ARROW (M6-4).
5. WHEN WORK IS BEING PERFORMED ON A SIDE ROAD OR DRIVEWAY, FOLLOW THE APPLICABLE STANDARD(S). THE DIRECTIONAL ARROW (M6-1 OR M6-4) SHALL BE COVERED OR REMOVED WHEN NO LONGER CONSISTENT WITH THE TRAFFIC CONTROL SET-UP.
6. ADVANCE WARNING SIGNS ARE TO BE OMITTED ON DRIVEWAYS UNLESS OTHERWISE SPECIFIED IN THE PLANS OR BY THE ENGINEER.
7. THE TRAFFIC CONTROL AND PROTECTION FOR SIDE ROADS, INTERSECTIONS, AND DRIVEWAYS SHALL BE INCLUDED IN THE COST OF SPECIFIED TRAFFIC CONTROL STANDARDS OR ITEMS.

All dimensions are in inches (millimeters) unless otherwise shown.

MODEL: P:\64\11
 FILE NAME: P:\64\11\DOT\Various\Phase 2\TFC\151\CONCADD_Sheets\62T45\TFC-STANDARD-02.dwg

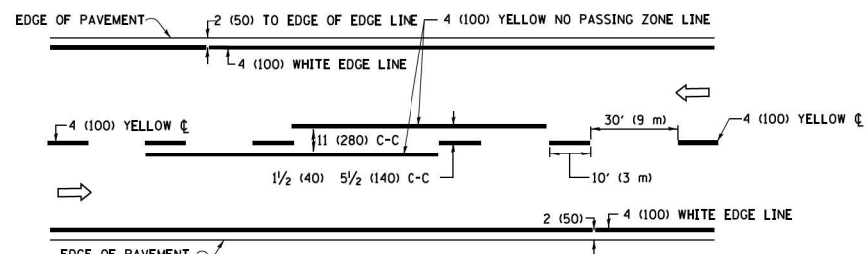
INFRASTRUCTURE ENGINEERING <small>INCORPORATED</small> 1 South Wacker Suite 2650 Chicago, IL 60606 P 312.425.9598 F 312.425.9598 www.infrastructure-eng.com	USER NAME = Alane	DESIGNED - KEK	REVISED -
	PLOT SCALE = 20,0000 * / in.	DRAWN - KEK	REVISED -
		CHECKED - ACL	REVISED -
		DATE - 01/16/2024	

**STATE OF ILLINOIS
DEPARTMENT OF TRANSPORTATION**

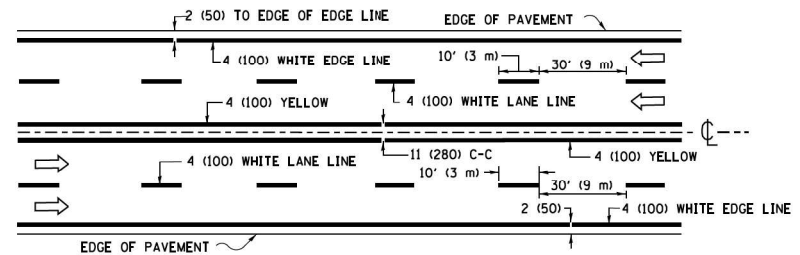
**DISTRICT ONE – TRAFFIC CONTROL AND PROTECTION FOR
SIDE ROADS, INTERSECTIONS, AND DRIVEWAYS (TC-10)**

SCALE: STA. 0 TO STA. 0

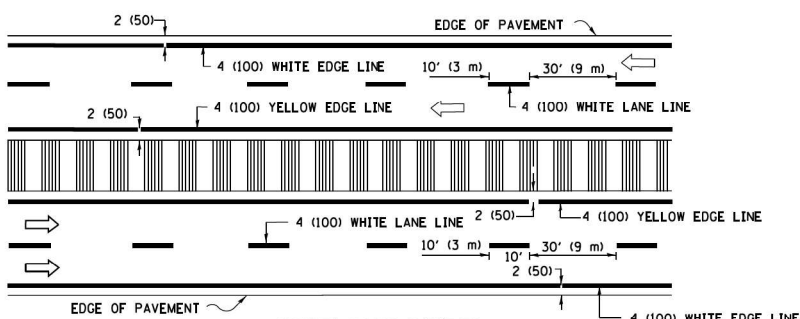
F.A.U. RTE.	SECTION	COUNTY	TOTAL SHEETS	SHEET NO.
1521	FAU 1521 22 BJ	COOK	17	13
CONTRACT NO. 62T45				
ILLINOIS FED. AID PROJECT				



2-LANE ROADWAY

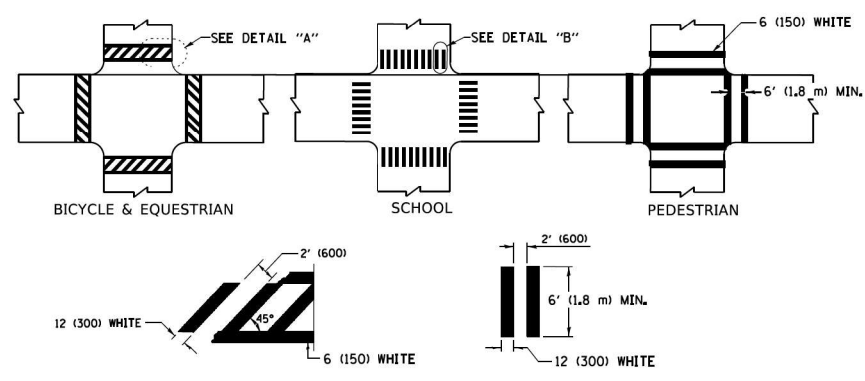


MULTI-LANE UNDIVIDED



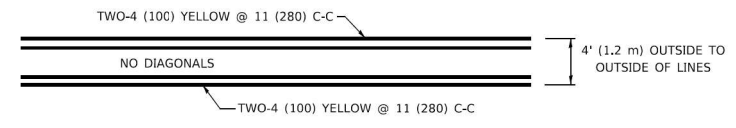
MULTI-LANE DIVIDED WITH MEDIAN

TYPICAL LANE AND EDGE LINE MARKING

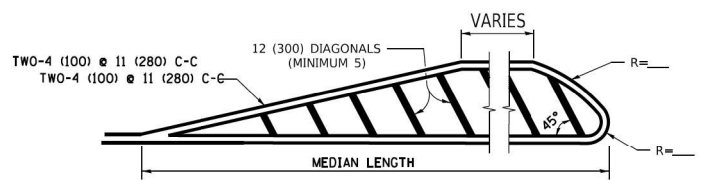


TYPICAL CROSSWALK MARKING

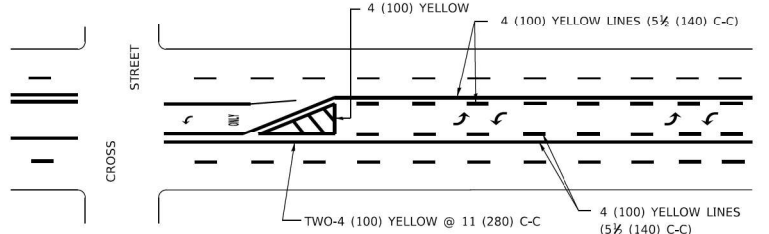
* MARKINGS SHALL BE INSTALLED PARALLEL TO THE CENTERLINE OF THE ROAD WHICH IT CROSSES



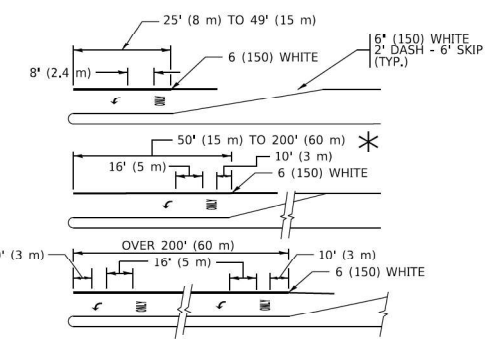
4' (1.2 m) WIDE MEDIANS ONLY



MEDIANS OVER 4' (1.2 m) WIDE



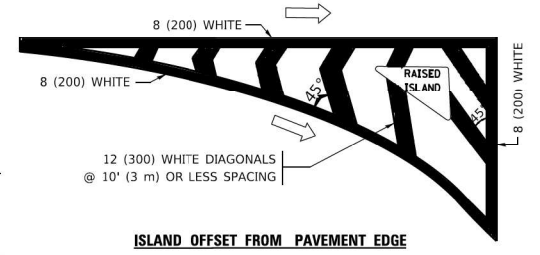
MEDIAN WITH TWO-WAY LEFT TURN LANE TYPICAL PAINTED MEDIAN MARKING



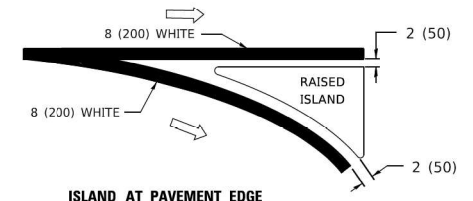
TYPICAL LEFT (OR RIGHT) TURN LANE

TYPICAL TURN LANE MARKING

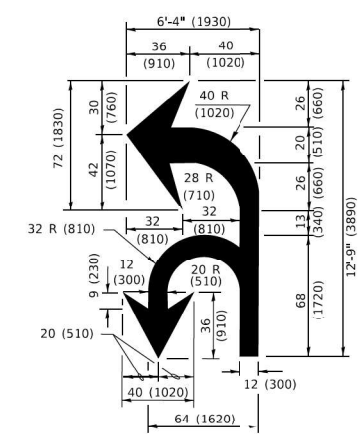
FULL SIZE LETTERS 8' (2.4 m) AND ARROWS SHALL BE USED.
 AREA = 15.6 SQ. FT. (1.5 m²) ONLY AREA = 20.8 SQ. FT. (1.9 m²)
 * TURN LANES IN EXCESS OF 400' (120 m) IN LENGTH MAY HAVE AN ADDITIONAL SET OF ARROW - *ONLY* INSTALLED MIDWAY BETWEEN THE OTHER TWO SETS OF ARROW - *ONLY*.



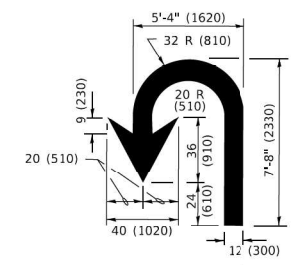
ISLAND OFFSET FROM PAVEMENT EDGE



ISLAND AT PAVEMENT EDGE TYPICAL ISLAND MARKING



COMBINATION LEFT AND U-TURN



U-TURN

LANE REDUCTION TRANSITION
 * LANE REDUCTION ARROWS REQUIRED AT SPEEDS OF 45 MPH OR GREATER OR WHEN SPECIFIED IN PLANS.

D(FT)	SPEED LIMIT
345	30
425	35
500	40
580	45
665	50
750	55

TYPE OF MARKING	WIDTH OF LINE	PATTERN	COLOR	SPACING / REMARKS
CENTERLINE ON 2 LANE PAVEMENT	4 (100)	SKIP-DASH	YELLOW	10' (3 m) LINE WITH 30' (9 m) SPACE
CENTERLINE ON MULTI-LANE UNDIVIDED PAVEMENT	2 @ 4 (100)	SOLID	YELLOW	11 (280) C-C
NO PASSING ZONE LINES: FOR ONE DIRECTION FOR BOTH DIRECTIONS	4 (100); 2 @ 4 (100)	SOLID/SOLID	YELLOW/YELLOW	5 1/2 (140) C-C FROM SKIP-DASH CENTERLINE 11 (280) C-C OMIT SKIP-DASH CENTERLINE BETWEEN
LANE LINES	4 (100); 5 (125) ON FREEWAYS	SKIP-DASH/SKIP-DASH	WHITE/WHITE	10' (3 m) LINE WITH 30' (9 m) SPACE
DOTTED LINES (EXTENSIONS OF CENTER, LANE OR TURN LANE MARKINGS)	SAME AS LINE BEING EXTENDED	SKIP-DASH	SAME AS LINE BEING EXTENDED	2' (600) LINE WITH 6' (1.8 m) SPACE
EDGE LINES	4 (100)	SOLID	YELLOW-LEFT WHITE-RIGHT	OUTLINE MEDIANS IN YELLOW
TURN LANE MARKINGS	6 (150) LINE; FULL SIZE LETTERS & SYMBOLS (8' (2.4m))	SOLID	WHITE	SEE TYPICAL TURN LANE MARKING DETAIL
TWO WAY LEFT TURN MARKING	2 @ 4 (100) EACH DIRECTION; 8' (2.4m) LEFT ARROW	SKIP-DASH AND SOLID IN PAIRS	YELLOW/WHITE	10' (3 m) LINE WITH 30' (9 m) SPACE FOR SKIP-DASH; 5 1/2 (140) C-C BETWEEN SOLID LINE AND SKIP-DASH LINE SEE TYPICAL TWO-WAY LEFT TURN MARKING DETAIL
CROSSWALK LINES (PEDESTRIAN) A. DIAGONALS (BIKE & EQUESTRIAN) B. LONGITUDINAL BARS (SCHOOL)	2 @ 6 (150); 2' (600) APART @ 45°; 12 (300) @ 90°	SOLID/SOLID	WHITE/WHITE/WHITE	NOT LESS THAN 6' (1.8 m) APART 2' (600) APART SEE TYPICAL CROSSWALK MARKING DETAILS.
STOP LINES	24 (600)	SOLID	WHITE	PLACE 4' (1.2 m) IN ADVANCE OF AND PARALLEL TO CROSSWALK; IF PRESENT, OTHERWISE, PLACE AT DESIRED STOPPING POINT. PARALLEL TO CROSSROAD CENTERLINE, WHERE POSSIBLE
PAINTED MEDIANS	2 @ 4 (100) WITH 12 (300) DIAGONALS @ 45°; NO DIAGONALS USED FOR 4' (1.2 m) WIDE MEDIANS	SOLID	YELLOW; TWO WAY TRAFFIC WHITE; ONE WAY TRAFFIC	11 (280) C-C FOR THE DOUBLE LINE SEE TYPICAL PAINTED MEDIAN MARKING.
GORE MARKING AND CHANNELIZING LINES	8 (200) WITH 12 (300) DIAGONALS @ 45°	SOLID	WHITE	DIAGONALS: 15' (4.5 m) C-C (LESS THAN 30MPH (50 km/h)) 20' (6 m) C-C (30 MPH (50 km/h) TO 45MPH (70 km/h)) 30' (9 m) C-C (OVER 45MPH (70 km/h))
RAILROAD CROSSING	24 (600) TRANSVERSE LINES; *RR* 15' 6" (1.8 m) LETTERS; 16 (400) LINE FOR *X*	SOLID	WHITE	SEE STATE STANDARD 780001 AREA OF: *RR* = 3.6 SQ. FT. (0.33 m ²) EACH *X* = 54.0 SQ. FT. (5.0 m ²)
SHOULDER DIAGONALS (REQUIRED FOR SHOULDERS > 8')	12 (300) @ 45°	SOLID	WHITE - RIGHT YELLOW - LEFT	50' (15 m) C-C (LESS THAN 30MPH (50 km/h)) 75' (25 m) C-C (30 MPH (50 km/h) TO 45MPH (70 km/h)) 150' (45 m) C-C (OVER 45MPH (70 km/h))
U TURN ARROW	SEE DETAIL	SOLID	WHITE	16.3 SF
2 ARROW COMBINATION LEFT AND U TURN	SEE DETAIL	SOLID	WHITE	30.4 SF

FOR FURTHER DETAILS ON PAVEMENT MARKING REFER TO STANDARD SPECIFICATIONS FOR ROAD AND BRIDGE CONSTRUCTION AND STATE STANDARD 780001.

All dimensions are in inches (millimeters) unless otherwise shown.

MODEL: P:\p\inf\... FILE NAME: P:\p\inf\... SHEET: 2 OF 2



USER NAME = Alane
 DESIGNED - KEK
 DRAWN - KEK
 CHECKED - ACL
 DATE - 01/16/2024

REVISIONS:
 REVISED -
 REVISED -
 REVISED -

STATE OF ILLINOIS DEPARTMENT OF TRANSPORTATION

DISTRICT ONE - TYPICAL PAVEMENT MARKINGS (TC-13)

SCALE: STA. 0 TO STA. 0

F.A.U. RTE.	SECTION	COUNTY	TOTAL SHEETS	SHEET NO.
1521	FAU 1521 22 BJ	COOK	17	15

CONTRACT NO. 62T45

ILLINOIS FED. AID PROJECT

MODEL: P:\inf\p\...
 FILE NAME: P:\22\22-4675-00_IDOT_Visib... Phase 2 (ITB_206-002)\V02_637451DC\NCADD_Sheets\62145-SIG-STD\ARD5-05.dwg

ROUTE MARKERS

FOR U.S. ROUTES
M1-40-2424

FOR ILLINOIS ROUTES
M1-50-2424

R.R. UNMARKED ROUTES
SPECIAL 24" x 18" VARIABLE
4" BLACK LETTERS ON WHITE
REFLECTIVE BACKGROUND

ARROWS SIGNS

M5-1L-2115

M5-1R-2115

M6-1-2115

M6-1-2115

M6-3-2115

CARDINAL DIRECTION & DETOUR SIGNS

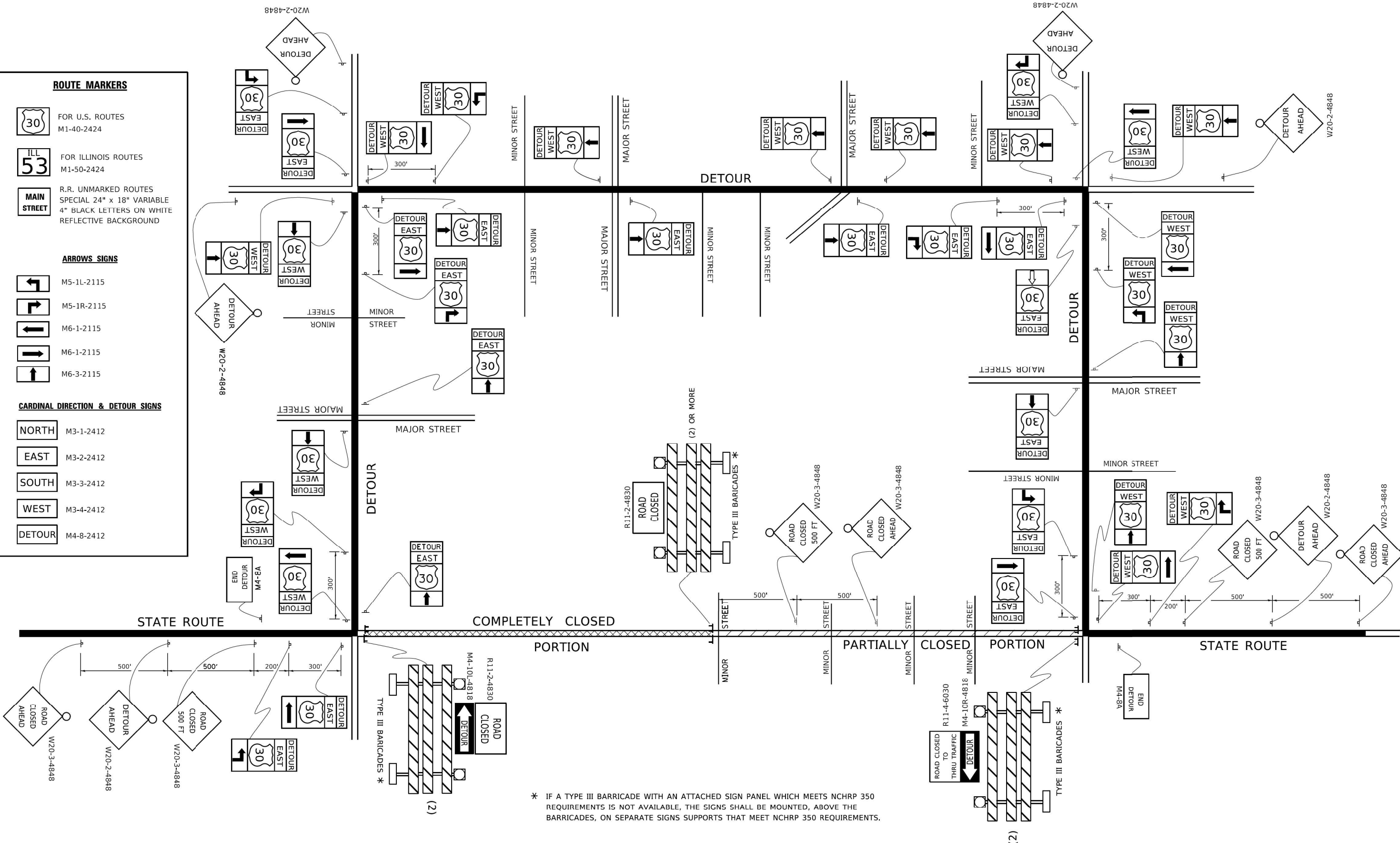
NORTH M3-1-2412

EAST M3-2-2412

SOUTH M3-3-2412

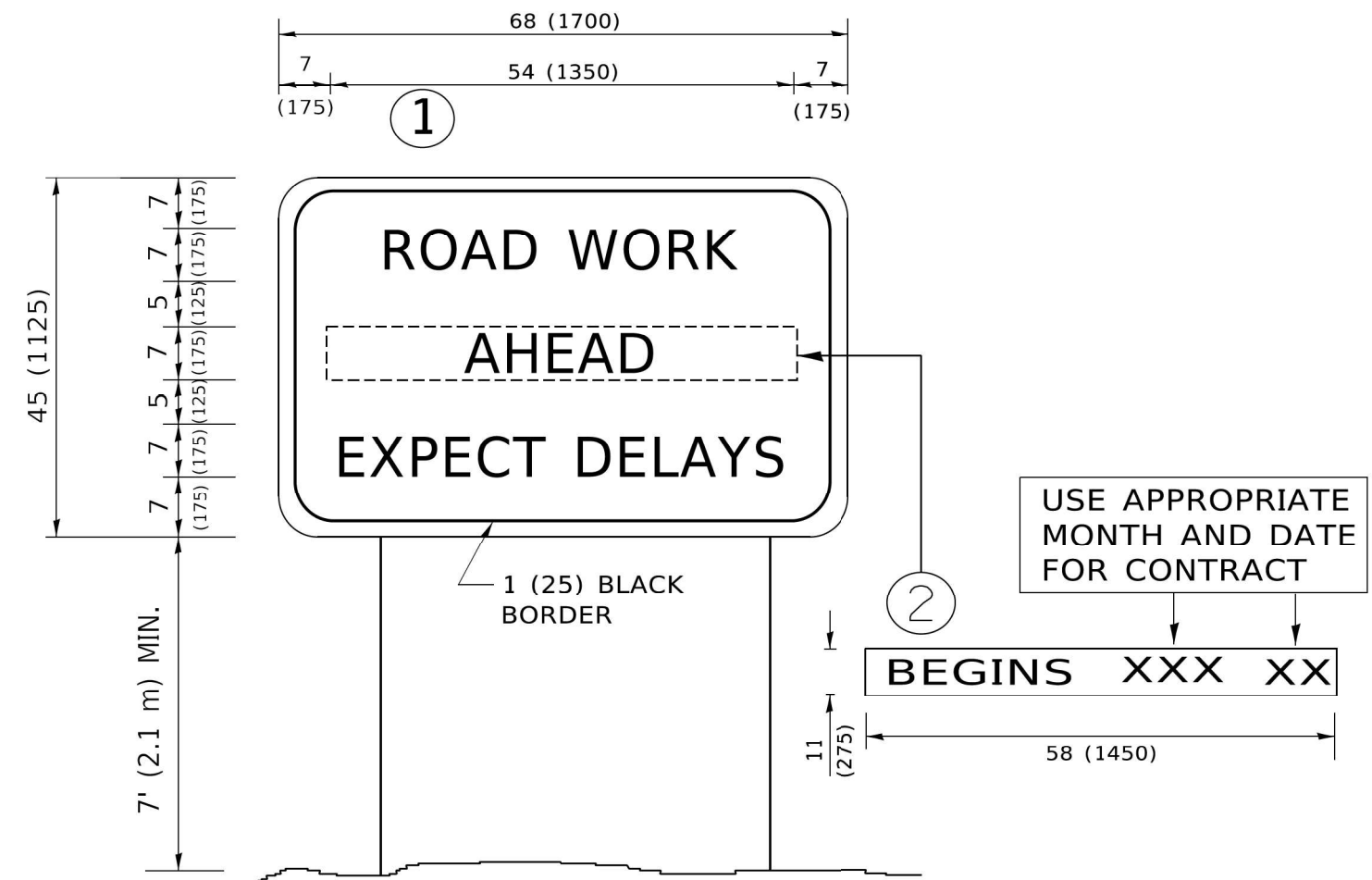
WEST M3-4-2412

DETOUR M4-8-2412



* IF A TYPE III BARRICADE WITH AN ATTACHED SIGN PANEL WHICH MEETS NCHRP 350 REQUIREMENTS IS NOT AVAILABLE, THE SIGNS SHALL BE MOUNTED, ABOVE THE BARRICADES, ON SEPARATE SIGNS SUPPORTS THAT MEET NCHRP 350 REQUIREMENTS.

 INFRASTRUCTURE ENGINEERING 1 South Wacker Suite 2650 Chicago, IL 60606 P 312.425.9598 F 312.425.9594 www.infrastructure-eng.com	USER NAME = Alane PLOT SCALE = 20,0000' +/- in.	DESIGNED - KEK DRAWN - KEK CHECKED - ACL DATE - 01/16/2024	REVISED - REVISED - REVISED -	STATE OF ILLINOIS DEPARTMENT OF TRANSPORTATION	DISTRICT ONE - DETOUR SIGNING FOR CLOSING STATE HIGHWAYS (TC-21)	F.A.U. RTE. = 1521 SECTION = FAU 1521 22 BJ COUNTY = COOK ILLINOIS FED. AID PROJECT	TOTAL SHEETS = 17 SHEET NO. = 16 CONTRACT NO. 62145
	SCALE: _____ STA. 0 TO STA. 0						



NOTES:

1. USE BLACK LETTERING ON ORANGE BACKGROUND.
2. ERECT SIGNS IN ADVANCE OF THE LOCATION FOR THE "ROAD CONSTRUCTION AHEAD" SIGN AT LOCATIONS AS DIRECTED BY THE ENGINEER.
3. ERECT SIGN ① WITH INSTALLED PANEL ② ONE WEEK PRIOR TO THE START OF CONSTRUCTION.
4. REMOVE PANEL ② SOON AFTER THE START OF CONSTRUCTION.
5. SEE SPECIAL PROVISION FOR "TEMPORARY INFORMATION SIGNING" FOR ADDITIONAL INFORMATION.
6. ONE SIGN ASSEMBLY EQUALS 25.70 SQ. FT. (2.3 SQ. M.)
7. SHALL BE PAID FOR AS TEMPORARY INFORMATION SIGNING.

ALL DIMENSIONS ARE IN INCHES (MILLIMETERS) UNLESS OTHERWISE SHOWN.

MODEL: D:\64611
 FILE NAME: P:\222222\4675-00_IDOT_Verborc_Phase 2 (ITB_206-002)\WO 02_62T45\DCN\CADD_Sheets\62T45_Signs\STANDARD\62-06.dgn

INFRASTRUCTURE ENGINEERING <small>1 South Wacker Suite 2650 Chicago, IL 60606 P 312.425.9598 F 312.425.9598 www.infrastructure-eng.com</small>	USER NAME = Alane	DESIGNED - KEK	REVISED - 1 NFO 2/8/2023
	PLOT SCALE = 20,0000 * / in.	DRAWN - KEK	REVISED -
		CHECKED - ACL	REVISED -
		DATE - 01/16/2024	

**STATE OF ILLINOIS
DEPARTMENT OF TRANSPORTATION**

DISTRICT ONE – ARTERIAL ROAD INFORMATION SIGN (TC-22)

SCALE: _____ STA. 0 TO STA. 0

F.A.U. RTE.	SECTION	COUNTY	TOTAL SHEETS	SHEET NO.
1521	FAU 1521 22 BJ	COOK	17	17
ILLINOIS FED. AID PROJECT			CONTRACT NO. 62T45	