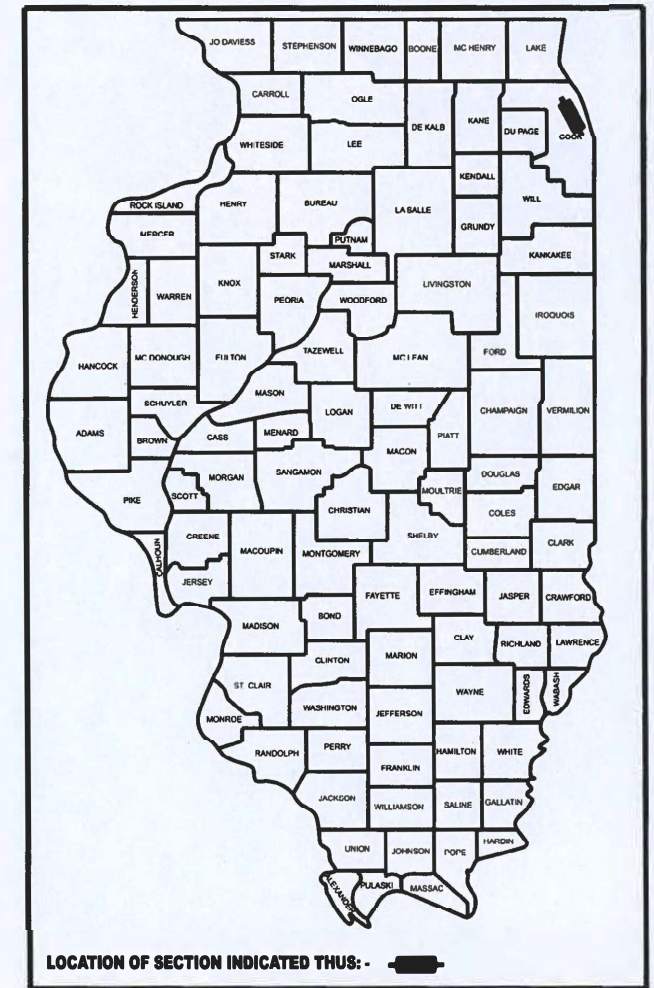


STATE OF ILLINOIS  
DEPARTMENT OF TRANSPORTATION

CH	COUNTY	TOTAL SHEETS	SHEET NO.
92	COOK	20	1
ILLINOIS		CONTRACT NO. 62U81	

D-91-109-23



LOCATION OF SECTION INDICATED THUS: - [Symbol] -

# PROPOSED HIGHWAY PLANS

**ROUTE: CH 92W (FOREST WAY DRIVE)**  
**SECTION: CH 0092 23 OVERLAY**  
**DESIGN OVERLAY**  
**COOK COUNTY**

**C-91-144-23**

FOR INDEX OF SHEETS, SEE SHEET NO.

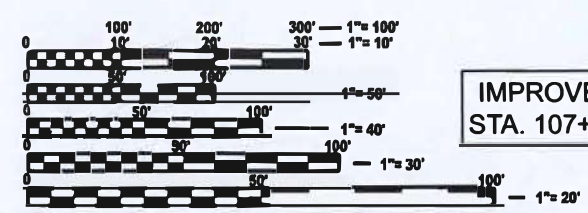
THE PROJECT IS LOCATED IN VILLAGE  
OF WINNETKA

IMPROVEMENT ENDS  
STA. 167+22

**DESIGN DESIGNATION:**

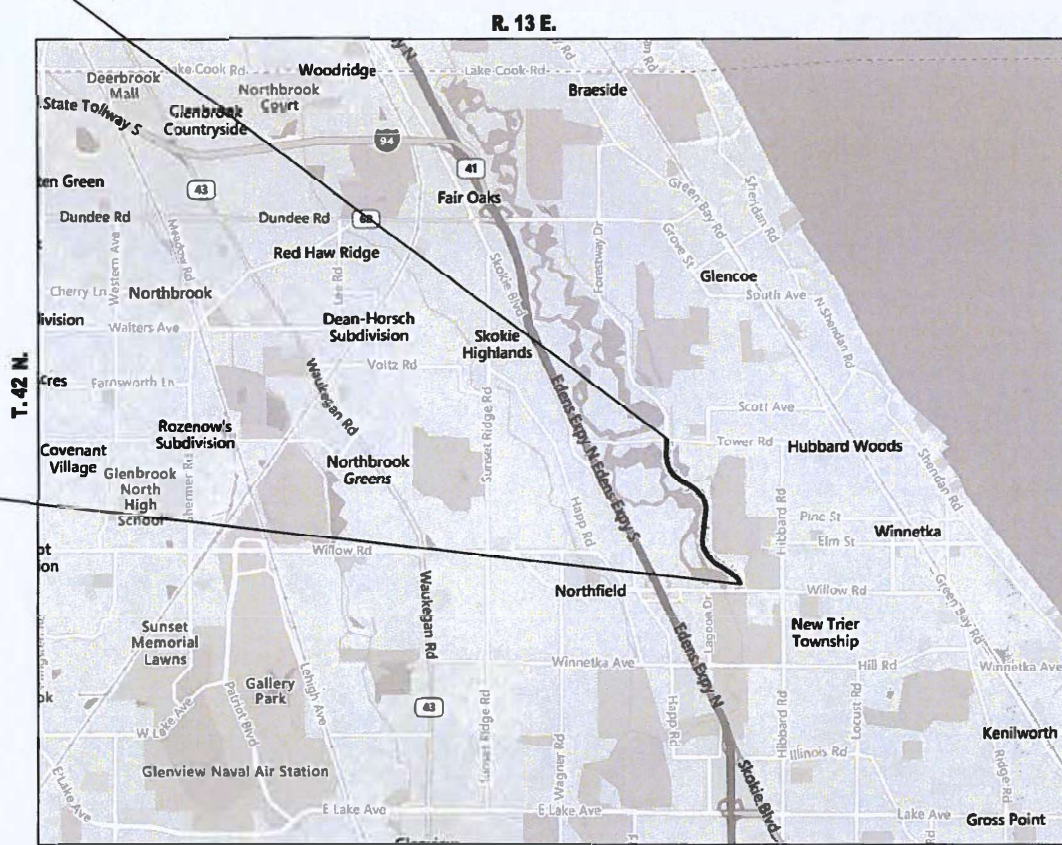
SPEED LIMIT: 30 MPH - 40 MPH  
2022 ADT = 2400

IMPROVEMENT BEGINS  
STA. 107+00



FULL SIZE PLANS HAVE BEEN PREPARED USING STANDARD  
ENGINEERING SCALES. REDUCED SIZED PLANS WILL NOT  
CONFORM TO STANDARD SCALES. IN MAKING MEASUREMENTS  
ON REDUCED PLANS, THE ABOVE SCALES MAY BE USED.

J.U.L.I.E.  
JOINT UTILITY LOCATION INFORMATION FOR EXCAVATION  
1-800-892-0123  
OR 811



GROSS & NET LENGTH = 6022 FT. = 1.14 MILE

PROJECT ENGINEER : ALAIN MIDY (847) 221-3056  
PROJECT MANAGER : RODRIGO LEDEZMA (847) 705-4580

CONTRACT NO. 62U81

STATE OF ILLINOIS  
DEPARTMENT OF TRANSPORTATION

SUBMITTED Jan 23 2024  
Jorge Rios IR  
REGIONAL ENGINEER

March 22, 2024 [Signature]  
ENGINEER OF DESIGN AND ENVIRONMENT

March 22, 2024 [Signature]  
DIRECTOR OF HIGHWAYS PROJECT IMPLEMENTATION

**PRINTED BY THE AUTHORITY  
OF THE STATE OF ILLINOIS**

**STATE STANDARDS**

**INDEX OF SHEETS**

**STANDARD NO.**

**DESCRIPTION**

**GENERAL NOTES**

I	COVER SHEET
2	INDEX OF SHEETS, STATE STANDARDS & GENERAL NOTES
3-4	SUMMARY OF QUANTITIES
5	EXISTING AND PROPOSED TYPICAL SECTIONS
6-8	ROADWAY PLAN
9	ADA DETAIL FOR SINGLE PERPENDICULAR CURB RAMPS (PD-1)
10	ADA DETAIL FOR SINGLE PERPENDICULAR CURB RAMPS (PD-2)
II	ADA DETAIL FOR SINGLE PERPENDICULAR CURB RAMPS WITH TURNING SPACE (PD-04)
12	DETAILS FOR FRAMES AND LIDS ADJUSTMENT WITH MILLING (BD-08)
13	PAVEMENT PATCHING FOR HMA SURFACED PAVEMENT (BD-22)
14	CURB OR CURB AND GUTTER REMOVAL AND REPLACEMENT (BD-24)
15	BUTT JOINT AND HMA TAPER DETAILS (BD-32)
16	TRAFFIC CONTROL AND PROTECTION FOR SIDE ROADS, INTERSECTIONS, AND DRIVEWAYS (TC-10)
17	TYPICAL APPLICATIONS RAISED REFLECTIVE PAVEMENT MARKERS (SNOW PLOW RESISTANT) (TC-11)
18	DISTRICT ONE TYPICAL PAVEMENT MARKINGS (TC-13)
19	SHORT TERM PAVEMENT MARKING LETTERS AND SYMBOLS (TC-16)
20	ARTERIAL ROAD INFORMATION SIGN (TC-22)

000001-08	STANDARD SYMBOLS, ABBREVIATIONS AND PATTERNS
442201-03	CLASS C AND D PATCHES
604001-05	FRAME AND LIDS, TYPE I
606001-08	COMBINNATION CONCRETE CURB AND GUTTER
701006-05	OFF-ROAD OPERATIONS, 2L, 2W, 15'(4.5m) TO 24'(600mm) PAVEMENT EDGE
701001-02	OFF-ROAD OPERATIONS, 2L, 2W, MORE THAN 15'(4.5m) AWAY PAVEMENT EDGE
701011-04	OFF-ROAD MOVING OPERATIONS, 2L, 2W, DAY ONLY PAVEMENT EDGE
701301-04	LANE CLOSURE, 2L, 2W, SHORT TIME OPERATION
701311-03	LANE CLOSURE, 2L, 2W, MOVING OPERATION - DAY ONLY
701501-06	URBAN LANE CLOSURE, 2L, 2W, UNDIVIDED
701701-10	URBAN LANE CLOSURE, MULTILANE INTERSECTION
701801-06	SIDEWALK, CORNER OR CROSSWALK CLOSURE
701901-09	TRAFFIC CONTROL DEVICES

1. BEFORE STARTING ANY EXCAVATION, THE CONTRACTOR SHALL CALL "C.U.A.N." AT (312) 744-7000, J.U.L.I.E. AT 1-800-892-0123, OR 811 FOR FIELD LOCATIONS OF BURIED ELECTRIC, TELEPHONE AND GAS UTILITIES. 48 HOUR NOTIFICATION IS REQUIRED.
2. TEN (10) FOOT TRANSITIONS SHALL BE USED TO MATCH PROPOSED CURB AND GUTTER AND MEDIAN ITEMS OF WORK TO EXISTING CURBS AND GUTTER AND MEDIANS IN THE FIELD, UNLESS OTHERWISE SHOWN. THE TRANSITIONS SHALL BE PAID FOR AT THE CONTRACT UNIT PRICE FOR THE PROPOSED ITEMS OF WORK SPECIFIED.
3. THE CONTRACTOR SHALL COORDINATE CONSTRUCTION ACTIVITIES WITH UTILITY COMPANIES, AND THE VILLAGE OF GLENCOE AND WINNETKA
4. THE CONTRACTOR WILL NOT BE ALLOWED TO SET UP A YARD OR FIELD OFFICE ON STATE PROPERTY WITHOUT WRITTEN PERMISSION FROM THE DEPARTMENT.
5. ANY PAVEMENT MARKINGS AND RAISED REFLECTIVE PAVEMENT MARKERS OBLITERATED BY MILLING AND RESURFACING OPERATIONS ON SIDE STREETS AND ENTRANCES SHALL BE REPLACED AND PAID FOR IN KIND.
6. ALL DAMAGE TO EXISTING PAVEMENT MARKINGS OR RAISED REFLECTIVE PAVEMENT MARKERS OUTSIDE THE REMOVAL LINE SHOWN ON THE PLANS SHALL BE REPLACED AT NO ADDITIONAL COST TO THE DEPARTMENT.
7. BEFORE BEGINNING ANY WORK, THE CONTRACTOR SHALL RETAIN AND RECORD FOR FUTURE REFERENCE, ALL EXISTING PAVEMENT MARKING LINES (AND RAISED REFLECTIVE PAVEMENT MARKERS) IN ORDER THAT THESE LOCATIONS CAN BE RE-ESTABLISHED FOR STRIPING, EXACT LOCATIONS OF ALL PAVEMENT MARKINGS SHALL BE AS SHOWN ON THE PLANS OR AS DIRECTED BY THE ENGINEER.
8. ALL PAVEMENT PATCHING LOCATIONS WILL BE DETERMINED IN THE FIELD BY THE ENGINEER.
9. LOCATION OF COMBINATION CONCRETE CURB AND GUTTER REMOVAL AND REPLACEMENT (OR COMBINATION CURB AND GUTTER), WILL BE DETERMINED IN THE FIELD BY THE ENGINEER.
10. DRAINAGE ADJUSTMENT OR RECONSTRUCTION LOCATIONS WILL BE DETERMINED IN THE FIELD BY THE ENGINEER.
11. IT SHALL BE THE CONTRACTOR'S RESPONSIBILITY TO VERIFY ALL DIMENSIONS AND CONDITIONS EXISTING IN THE FIELD PRIOR TO CONSTRUCTION AND ORDERING OF MATERIALS.
12. FRAMES AND GRATES, ADJUSTMENT OF PRIVATE UTILITIES WITHIN THE LIMITS OF THE IMPROVEMENTS SHALL BE DONE BY THEIR RESPECTIVE OWNERS AND ARE NOT PART OF THIS CONTRACT.
13. THE CONTRACTOR SHALL CONTACT THE DISTRICT ONE TRAFFIC CONTROL SUPERVISOR KALPANA KANNAN-HOSADURGA AT KALPANA.KANNAN-HOSADURGA@ILLINOIS.GOV A MINIMUM OF 72 HOURS IN ADVANCE OF BEGINNING WORK.
14. THE ENGINEER SHALL CONTACT FADISULTAN, AREA TRAFFIC FIELD ENGINEER, AT FADISULTAN@ILLINOIS.GOV A MINIMUM OF TWO (2) WEEKS PRIOR TO THE PLACEMENT OF PERMANENT PAVEMENT MARKINGS.
15. THESE PLANS HAVE BEEN PREPARED FROM NOTES RECEIVED FROM THE BUREAU OF CONSTRUCTION.
16. THE THICKNESS OF THE HMA MIXTURE SHOWN ON THE PLANS IS THE NOMINAL THICKNESS, DEVIATIONS FROM THE NOMINAL THICKNESS WILL BE PERMITTED WHEN SUCH DEVIATIONS OCCUR DUE TO IRREGULARITIES IN THE EXISTING SURFACE OR BASE ON WHICH THE HMA MIXTURE IS PLACED.
17. THE CONTRACTOR SHALL BE REQUIRED TO PROVIDE ACCESS TO ABUTTING PROPERTY AT ALL TIMES DURING THE CONSTRUCTION OF THIS PROJECT.
18. THE CONTRACTOR WILL BE REQUIRED TO KEEP A RECORD OF THE LOCATIONS OF PLATED STRUCTURES BY STATION AND OFFSET LEFT OR RIGHT OF THE CENTERLINE OF PAVEMENT.
19. EXISTING BROKEN FRAMES AND LIDS SHALL BE REMOVED AND DISPOSED OF BY THE CONTRACTOR AND SHALL BE REPLACED AS DIRECTED BY THE ENGINEER. REPLACEMENT FRAMES AND LIDS WILL BE PAID FOR ACCORDING TO ARTICLE 109.04 OF THE STANDARD SPECIFICATIONS UNLESS A SEPARATE PAY ITEM HAS BEEN PROVIDED.
20. FOR FRAMES AND LIDS ADJUSTMENT WITHOUT MILLING, REUSE EXISTING FRAME AND LID UNLESS OTHERWISE SPECIFIED IN THE PLANS.
21. DO NOT SCALE PLANS FOR CONSTRUCTION DIMENSIONS.
22. DOUBLE LANE MARKERS ARE TO BE USED AS SHOWN ON THE DISTRICT ONE DETAIL "TYPICAL APPLICATIONS RAISED REFLECTIVE PAVEMENT MARKERS (SNOW-PLOW RESISTANT)" SHOWN IN THE PLANS.
23. WHEN THE MILLED PAVEMENT IS OPEN TO TRAFFIC THE MAXIMUM GRADE DIFFERENTIAL BETWEEN PASSES OF THE MILLING MACHINE SHALL NOT EXCEED 1 1/2 INCHES (40 mm) WHERE THE SPEED LIMIT IS 40 MPH (80 km/h) OR LESS AND 1 INCH (25 mm) WHERE THE SPEED LIMIT IS GREATER THAN 40 MPH (80 km/h), WITH WRITTEN APPROVAL OF THE ENGINEER, A MAXIMUM GRADE DIFFERENTIAL OF 3 INCHES (75 mm) MAY BE ALLOWED IF THE EDGE OF THE MILLING IS SLOPED A MINIMUM 1:3 (V:H) OR A NOTCHED LONGITUDINAL WEDGE IS USED.
24. BUTT JOINTS WILL BE INSTALLED AT THE ENDS OF ALL RESURFACING (WHERE RESURFACING MEETS EXISTING PAVEMENT) ACCORDING TO THE "BUTT JOINT AND HOT-MIX ASPHALT TAPER DETAILS" SHEET INCLUDED IN THE PLANS, UNLESS OTHERWISE SPECIFIED.
25. OVERNIGHT LANE CLOSURES SHALL NOT BE ALLOWED FOR REHABILITATION PROJECTS INVOLVING DAYTIME MILLING AND RESURFACING OPERATIONS AND CLASS D PATCHING UNLESS OTHER CONDITIONS WARRANT EXTENDED LANE CLOSURES AS DETERMINED AND APPROVED IN WRITING BY THE ENGINEER OR AS PROVIDED FOR IN THE CONTRACT SPECIFICATIONS.
26. ALL MILLED SURFACES SHALL BE A UNIFORM CROSS SLOPE PER LANE AND FREE OF RIDGES BETWEEN PASSES. ANY DEVIATIONS SHALL BE CORRECTED AT NO COST TO THE DEPARTMENT.
27. PAVEMENT MARKING TAPE, TYPE IV SHALL BE USED FOR SHORT TERM PAVEMENT MARKING ON ALL FINAL SURFACES.

MODEL: D:\dtd\...  
 FILE: 000001-08...  
 USER: addis.abebaw  
 DATE: 2/6/2024

USER NAME = addis.abebaw DESIGNED - DRAWN - PLOT SCALE = \$SCALE\$ PLOT DATE = 2/6/2024	REVISIONS REVISIONS REVISIONS REVISIONS	<b>STATE OF ILLINOIS DEPARTMENT OF TRANSPORTATION</b>	<b>INDEX OF SHEETS, STATE STANDARDS AND GENERAL NOTES</b>	C.H. 92 SECTION Ch 0092 23 OVERLAY COUNTY COOK TOTAL SHEETS 20 SHEET NO. 2 CONTRACT NO. 62U81 ILLINOIS FED. AID PROJECT
---	--	---	---	---

**SUMMARY OF QUANTITIES**

Code No.	Item	Unit	Total Quantity	URBAN 100 % STATE 005		
20200100	EARTH EXCAVATION	CU YD	10	10	0	0
21101615	TOPSOIL FURNISH AND PLACE, 4"	SQ YD	11	11	0	0
25200110	SODDING, SALT TOLERANT	SQ YD	11	11	0	0
40600290	BITUMINOUS MATERIALS (TACK COAT)	POUND	11014	11014	0	0
40600370	LONGITUDINAL JOINT SEALANT	FOOT	6700	6700	0	0
40600400	MIXTURE FOR CRACKS, JOINTS, AND FLANGEWAYS	TON	25	25	0	0
40600982	HOT-MIX ASPHALT SURFACE REMOVAL - BUTT JOINT	SQ YD	130	130	0	0
40602985	HOT-MIX ASPHALT BINDER COURSE, IL-9.5, N70	TON	1695	1695	0	0
40604062	HOT-MIX ASPHALT SURFACE COURSE, IL-9.5, MIX "D", N70	TON	1660	1660	0	0
42001300	PROTECTIVE COAT	SQ YD	80	80	0	0
42400200	PORTLAND CEMENT CONCRETE SIDEWALK 5 INCH	SQ FT	625	625	0	0
42400800	DETECTABLE WARNINGS	SQ FT	60	60	0	0
44000156	HOT-MIX ASPHALT SURFACE REMOVAL, 1 3/4"	SQ YD	1782	1782	0	0
44000164	HOT-MIX ASPHALT SURFACE REMOVAL, 3 3/4"	SQ YD	15130	15130	0	0
44000600	SIDEWALK REMOVAL	SQ FT	690	690	0	0
44201789	CLASS D PATCHES, TYPE II, 12 INCH	SQ YD	242	242	0	0
44201794	CLASS D PATCHES, TYPE III, 12 INCH	SQ YD	182	182	0	0
44201796	CLASS D PATCHES, TYPE IV, 12 INCH	SQ YD	182	182	0	0
48102100	AGGREGATE WEDGE SHOULDER, TYPE B	TON	420	420	0	0
60300305	FRAMES AND LIDS TO BE ADJUSTED	EACH	16	16	0	0
66900200	NON-SPECIAL WASTE DISPOSAL	CU YD	10	10	0	0
66900530	SOIL DISPOSAL ANALYSIS	EACH	1	1	0	0

**SUMMARY OF QUANTITIES**

Code No.	Item	Unit	Total Quantity	URBAN 100 % STATE 005		
* 66901001	REGULATED SUBSTANCES PRE-CONSTRUCTION PLAN	L SUM	1	1	0	0
* 66901003	REGULATED SUBSTANCES FINAL CONSTRUCTION REPORT	L SUM	1	1	0	0
* 66901006	REGULATED SUBSTANCES MONITORING	CAL DA	3	3	0	0
67100100	MOBILIZATION	L SUM	1	1	0	0
70102620	TRAFFIC CONTROL AND PROTECTION, STANDARD 701501	L SUM	1	1	0	0
70102635	TRAFFIC CONTROL AND PROTECTION, STANDARD 701701	L SUM	1	1	0	0
70102640	TRAFFIC CONTROL AND PROTECTION, STANDARD 701801	L SUM	1	1	0	0
70300100	SHORT TERM PAVEMENT MARKING	FOOT	13756	13756	0	0
70300150	SHORT TERM PAVEMENT MARKING REMOVAL	SQ FT	22160	22160	0	0
70300221	TEMPORARY PAVEMENT MARKING - LINE 4"- PAINT	FOOT	78936	78936	0	0
70300241	TEMPORARY PAVEMENT MARKING - LINE 6"- PAINT	FOOT	405	405	0	0
70300261	TEMPORARY PAVEMENT MARKING - LINE 12"- PAINT	FOOT	180	180	0	0
70300281	TEMPORARY PAVEMENT MARKING - LINE 24"- PAINT	FOOT	90	90	0	0
* 78000200	THERMOPLASTIC PAVEMENT MARKING - LINE 4"	FOOT	26312	26312	0	0
* 78000400	THERMOPLASTIC PAVEMENT MARKING - LINE 6"	FOOT	135	135	0	0
* 78000600	THERMOPLASTIC PAVEMENT MARKING - LINE 12"	FOOT	60	60	0	0
* 78000650	THERMOPLASTIC PAVEMENT MARKING - LINE 24"	FOOT	30	30	0	0
* 78100100	RAISED REFLECTIVE PAVEMENT MARKER	EACH	400	400	0	0
78300200	RAISED REFLECTIVE PAVEMENT MARKER REMOVAL	EACH	322	322	0	0
78300202	PAVEMENT MARKING REMOVAL - WATER BLASTING	SQ FT	13054	13054	0	0
X2020110	GRADING AND SHAPING SHOULDERS	UNIT	132	132	0	0

MODEL: SQO 3 [Sheet] \*  
 FILE NAME: c:\pwworking\addis\abebaw\09040353\0110923-ahi-SQO.dgn

USER NAME = addis.abebaw	DESIGNED -	REVISED -
PLOT SCALE = \$\$SCALE\$	DRAWN -	REVISED -
PLOT DATE = 2/7/2024	CHECKED -	REVISED -
	DATE -	REVISED -

**STATE OF ILLINOIS**  
**DEPARTMENT OF TRANSPORTATION**

<b>SUMMARY OF QUANTITIES</b>	
SCALE:	SHEET OF SHEETS STA. TO STA.

CH	SECTION	COUNTY	TOTAL SHEETS	SHEET NO.
92	CH 0092 23 OVERLAY	COOK	20	3
ILLINOIS FED AID PROJECT			CONTRACT NO. 62U81	

# SUMMARY OF QUANTITIES

URBAN  
100 %  
STATE  
005

Code No.	Item	Unit	Total Quantity			
X4060995	TEMPORARY RAMP (SPECIAL)	SQ YD	129	129	0	0
X4400501	COMBINATION CURB AND GUTTER REMOVAL AND REPLACEMENT LESS THAN OR EQUAL TO 10 FEET	FOOT	10	10	0	0
X4400503	COMBINATION CURB AND GUTTER REMOVAL AND REPLACEMENT GREATER THAN 10 FEET	FOOT	20	20	0	0
X5537800	STORM SEWERS TO BE CLEANED 12"	FOOT	180	180	0	0
X6030310	FRAMES AND LIDS TO BE ADJUSTED (SPECIAL)	EACH	1	1	0	0
X6700407	ENGINEER'S FIELD OFFICE, TYPE A (D1)	CAL MO	12	12	0	0
X0320050	CONSTRUCTION LAYOUT (SPECIAL)	L SUM	1	1	0	0
Z0018500	DRAINAGE STRUCTURES TO BE CLEANED	EACH	22	22	0	0
Z0018600	DRAINAGE STRUCTURES TO BE RECONSTRUCTED	EACH	2	2	0	0
Z0030850	TEMPORARY INFORMATION SIGNING	SQ FT	102	102	0	0

MODEL: SOC\_4 [Sheet]  
FILE NAME: c:\pw\work\pwr\abebaw\0940353\110923-shl-SOO.dgn

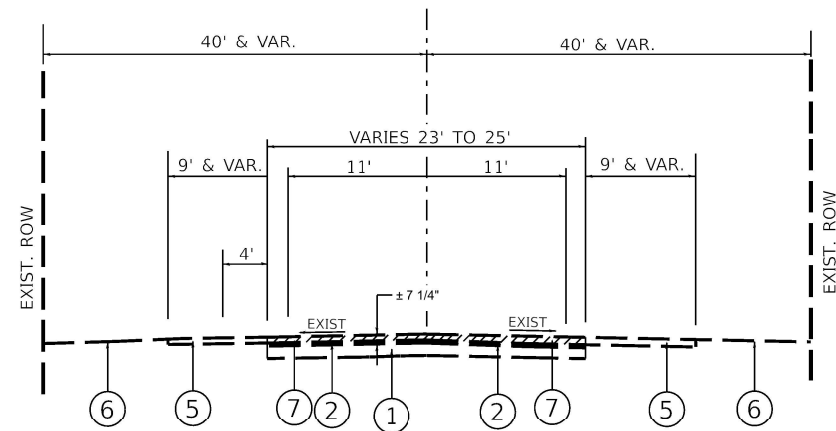
USER NAME = addis.abebaw	DESIGNED -	REVISED -
	DRAWN -	REVISED -
PLOT SCALE = \$SCALE\$	CHECKED -	REVISED -
PLOT DATE = 2/7/2024	DATE -	REVISED -

**STATE OF ILLINOIS  
DEPARTMENT OF TRANSPORTATION**

## SUMMARY OF QUANTITIES

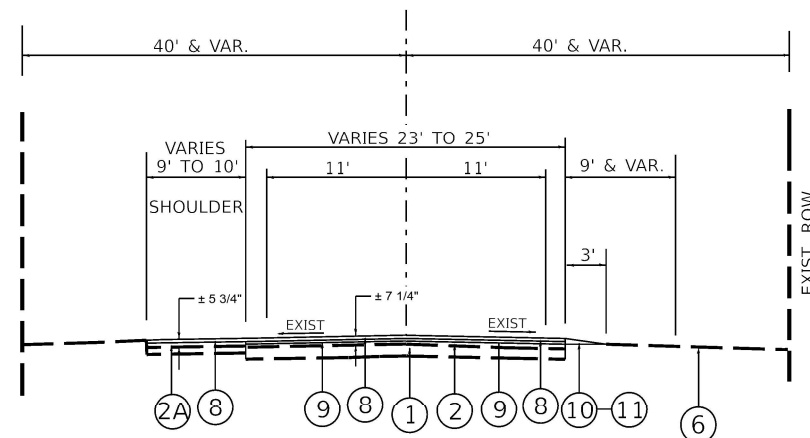
SCALE: SHEET OF SHEETS STA. TO STA.

C.H.	SECTION	COUNTY	TOTAL SHEETS	SHEET NO.
92	CH 0092 23 OVERLAY	COOK	22	4
CONTRACT NO. 62U81				
ILLINOIS FED. AID PROJECT				



**EXISTING TYPICAL SECTION**

FOREST WAY DR.  
STA. 107+00 TO STA. 167+22

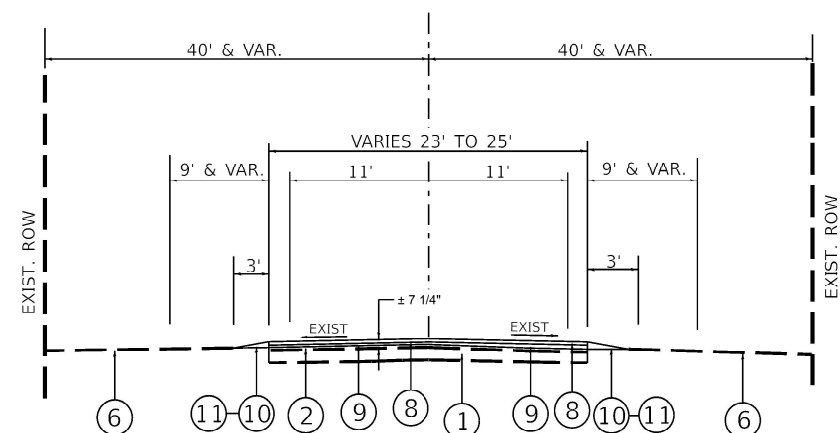


**PROPOSED TYPICAL SECTION (SHOULDER)**

FOREST WAY DR.  
STA. 108+00 TO STA. 111+13  
STA. 120+00 TO STA. 122+51  
STA. 124+62 TO STA. 129+00  
STA. 135+00 TO STA. 138+58  
STA. 140+32 TO STA. 144+00  
STA. 160+58 TO STA. 162+36

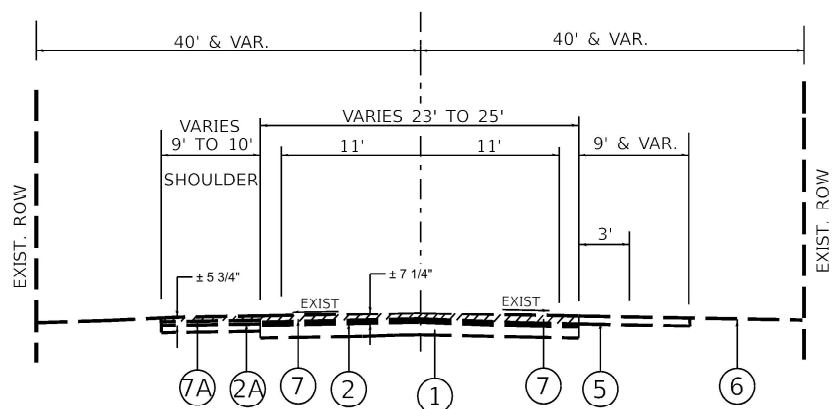
**LEGEND**

- ① EXIST. P.C.C. PAVEMENT ± 8 1/2"
- ② EXIST. HOT-MIX ASPHALT PAVEMENT AFTER MILLING ± 3 1/2"
- ②A EXIST. HOT-MIX ASPHALT PAVEMENT AFTER MILLING ± 4"
- ③ EXIST. AGGREGATE SHOULDER
- ④ EXIST. PARKING LANE
- ⑤ EXIST. AGGREGATE SHOULDER
- ⑥ EXIST. GROUND
- ⑦ PROP. HOT-MIX ASPHALT SURFACE REMOVAL, 3 3/4"
- ⑦A PROP. HOT-MIX ASPHALT SURFACE REMOVAL, 1 3/4"
- ⑧ PROP. HMA SURFACE COURSE, MIX "D", IL-9.5, N70, 1 3/4"
- ⑨ PROP. HMA BINDER COURSE, IL-9.5, N70, 2"
- ⑩ PROP. AGGREGATE WEDGE SHOULDER, TYPE B
- ⑪ PROP. GRADING AND SHAPING SHOULDER



**PROPOSED TYPICAL SECTION**

FOREST WAY DR.  
STA. 107+00 TO STA. 167+22



**EXISTING TYPICAL SECTION (SHOULDER)**

FOREST WAY DR.  
STA. 108+00 TO STA. 111+13  
STA. 120+00 TO STA. 122+51  
STA. 124+62 TO STA. 129+00  
STA. 135+00 TO STA. 138+58  
STA. 140+32 TO STA. 144+00  
STA. 160+58 TO STA. 162+36

MIXTURE REQUIREMENTS		QUALITY MANAGEMENT PROGRAM (QMP)
MIXTURE USES	VOIDS @ Ndes	
<b>PAVEMENT RESURFACING</b>		
HOT-MIX ASPHALT SURFACE COURSE, MIX "D", N70 (IL 9.5 mm), 1 3/4"	4% AT 70 GYR.	<b>QCP</b>
HOT-MIX ASPHALT BINDER COURSE, IL-9.5, N70, 2"	4% AT 70 GYR.	<b>QCP</b>
<b>PATCHING</b>		
CLASS D PATCHES (HMA BINDER, IL-19.0)	4% AT 70 GYR.	<b>QC/QA</b>
<b>TEMPORARY RAMP (SPECIAL)</b>		
HOT-MIX ASPHALT BINDER COURSE, IL-9.5, N70 (VAR. DEPTH)	4% AT 70 GYR.	<b>QC/QA</b>
<b>SHOULDER RESURFACING</b>		
HOT-MIX ASPHALT SURFACE COURSE, MIX "D", N70 (IL 9.5 mm), 1 3/4"	4% AT 70 GYR.	<b>QCP</b>

QMP Designation: Quality Control/Quality Assurance (QC/QA); Quality Control for Performance (QCP)

NOTE 1: THE UNIT WEIGHT USED TO CALCULATE ALL HMA SURFACE MIXTURE QUANTITIES IS 112 LBS/SQYD/IN  
NOTE 2: THE "AC TYPE" FOR POLYMERIZED HMA MIXES SHALL BE "SBS/SBR PG 76-22" AND FOR NON-POLYMERIZED HMA THE "AC TYPE" SHALL BE "PG 64-22" UNLESS MODIFIED BY RECLAIMED MATERIALS SPECIFICATION.

**THE CONTRACTOR SHALL MILL FIRST THEN PATCH**

NOTE A:  
THE LONGITUDINAL JOINT SEALANT SHALL BE PLACED ON THE  
HMA BC, IL-9.5, N70

Default: \\p01ddict-law.bentley.com:RWDOT\Documents\DOT\_C\_cad\Bentley\_IG03D\Project\110923\_CAD\Drawings\CD\Sheets\0110923-1nt-typical.dgn

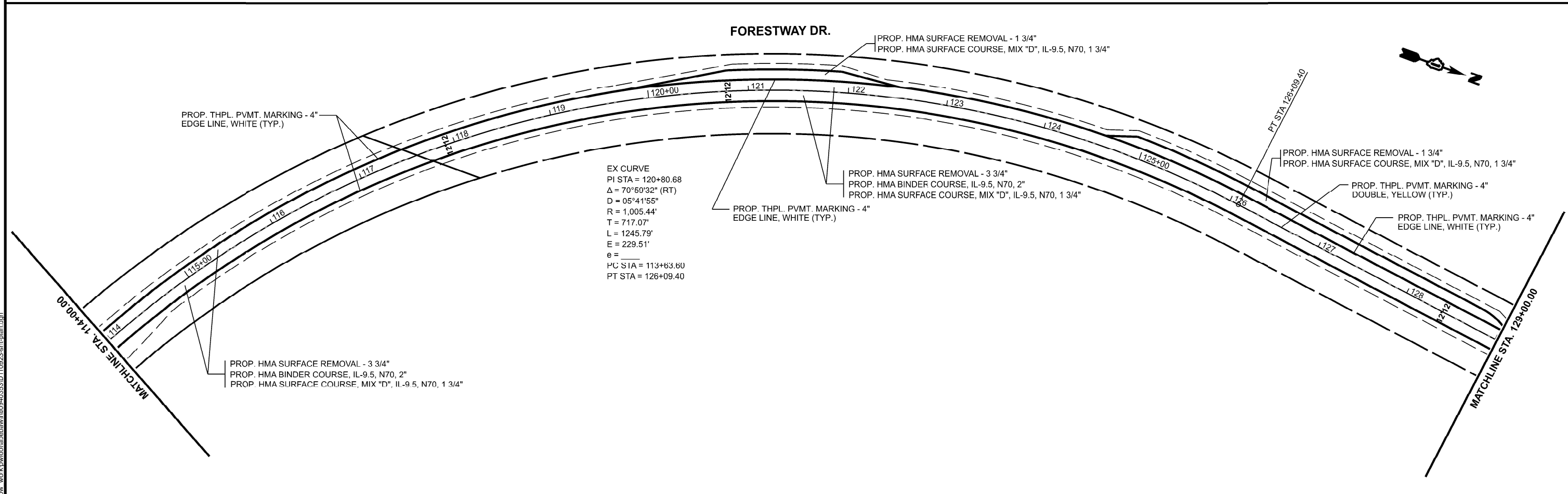
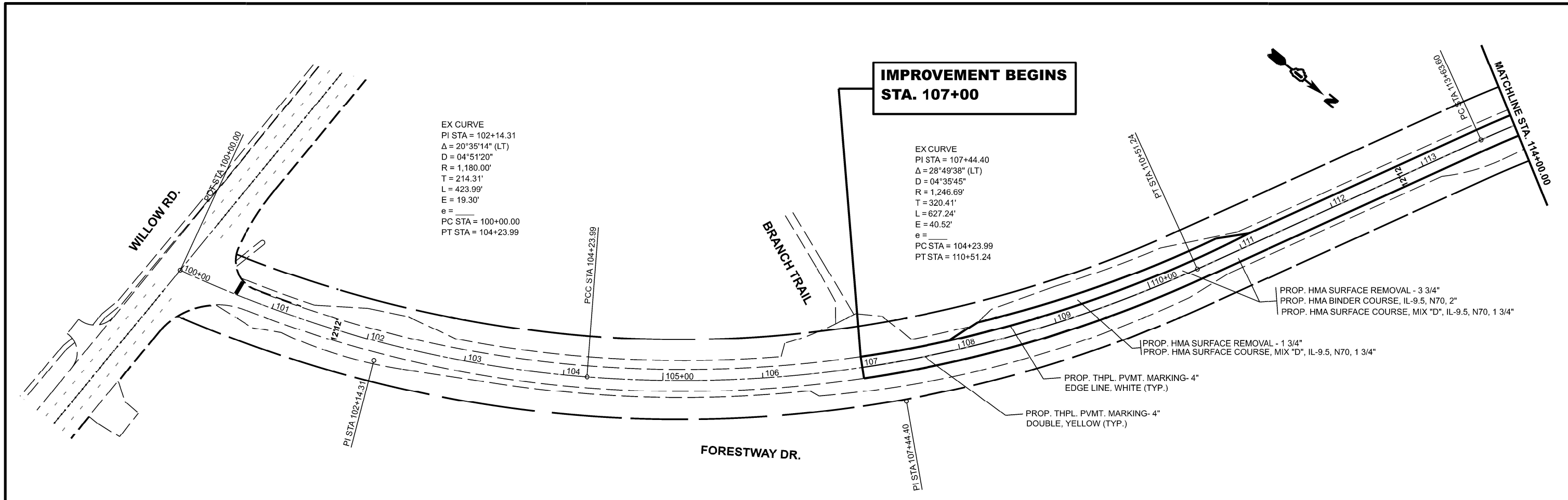
USER NAME = aduls.dcteam	DESIGNED -	REVISED -
PLOT SCALE = 1/8"=1'-0"	CHECKED -	REVISED -
PLOT DATE = 2/6/2024	DATE -	REVISED -

STATE OF ILLINOIS  
DEPARTMENT OF TRANSPORTATION

EXISTING AND PROPOSED TYPICAL SECTIONS  
FOREST WAY DR. (WILLOW RD. TO TOWER RD.)

C.H.	SECTION	COUNTY	TOTAL SHEETS NO.
92	CH 0092 23 OVERLAY	COOK	20 5
			CONTRACT NO. 62U81
ILLINOIS FED. AID PROJECT			

SCALE: SHEET OF SHEETS STA. TO STA.



MODEL: Forest Way Cr. - RelvisePlan01  
 FILE NAME: c:\paw\_swork\paw\addisabebaw\00340353\0110923\_sht1plan.dgn

USER NAME = addis.abebaw	DESIGNED - ADDIS ABEBAW	REVISED -
PLOT SCALE = \$SCALE\$	DRAWN - NAWFAL ELAZIZI	REVISED -
PLOT DATE = 2/7/2024	CHECKED - SHAWN LEY	REVISED -
	DATE -	REVISED -

**STATE OF ILLINOIS  
 DEPARTMENT OF TRANSPORTATION**

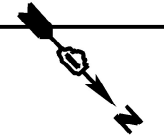
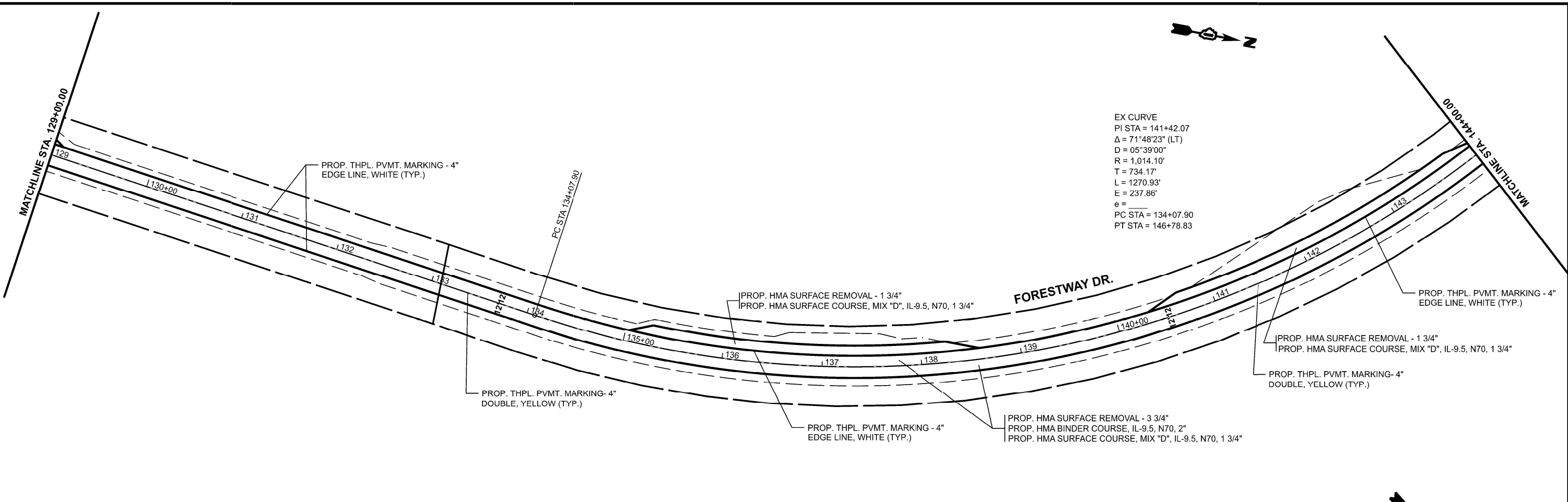
**ROADWAY PLANS  
 FOREST WAY DR. FROM WILLOW RD. TO TOWER RD.**

C.H.	SECTION	COUNTY	TOTAL SHEETS	SHEET NO.
92	CH 0092 23 OVERLAY	COOK	20	6
CONTRACT NO. 62U81				
ILLINOIS FED. AID PROJECT				

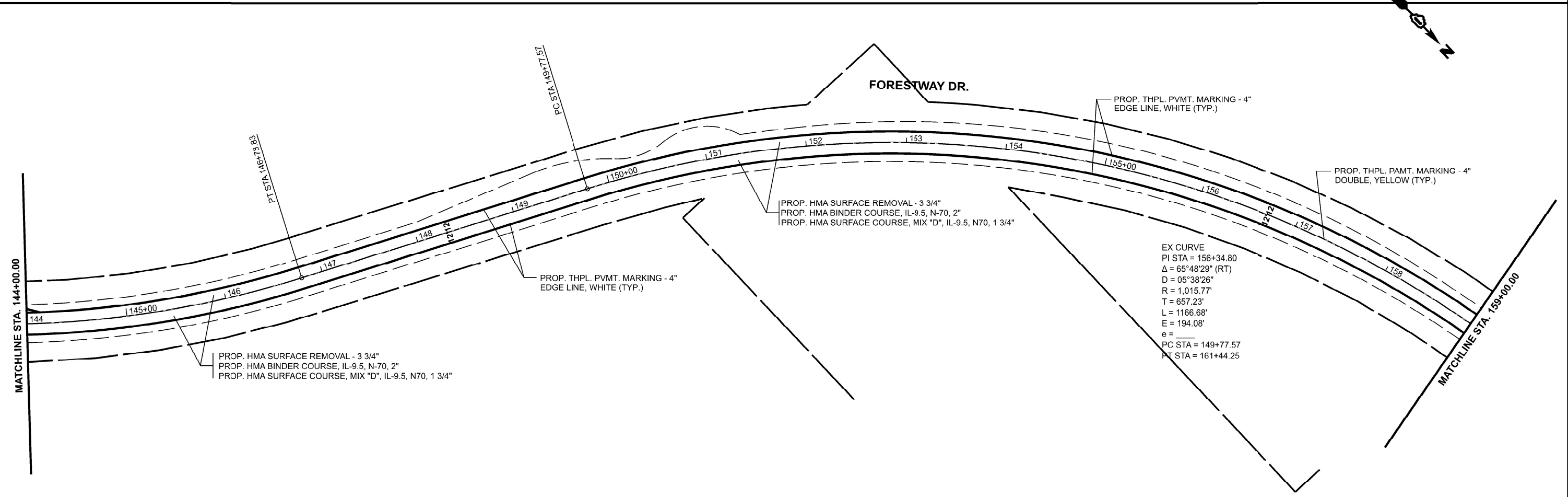
SCALE: SHEET OF SHEETS STA. 99+00.00 TO STA. 129+00.00



EX CURVE  
 PI STA = 141+42.07  
 $\Delta = 71^{\circ}48'23"$  (LT)  
 $D = 05^{\circ}39'00"$   
 $R = 1,014.10'$   
 $T = 734.17'$   
 $L = 1270.93'$   
 $E = 237.86'$   
 $e =$   
 PC STA = 134+07.90  
 PT STA = 146+78.83



EX CURVE  
 PI STA = 156+34.80  
 $\Delta = 65^{\circ}48'29"$  (RT)  
 $D = 05^{\circ}38'26"$   
 $R = 1,015.77'$   
 $T = 657.23'$   
 $L = 1166.68'$   
 $E = 194.08'$   
 $e =$   
 PC STA = 149+77.57  
 PT STA = 161+44.25



MODEL: Forest Way Cr - RdwayPlan02  
 FILE NAME: c:\paw\_work\paw\addis\abebaw\00340353\0110923\_sht1plan.dgn

USER NAME = addis.abebaw	DESIGNED - ADDIS ABEBAW	REVISED -
PLOT SCALE = \$SCALE\$	DRAWN - NAWFAL ELAZIZI	REVISED -
PLOT DATE = 2/7/2024	CHECKED - SHAWN LEY	REVISED -
	DATE -	REVISED -

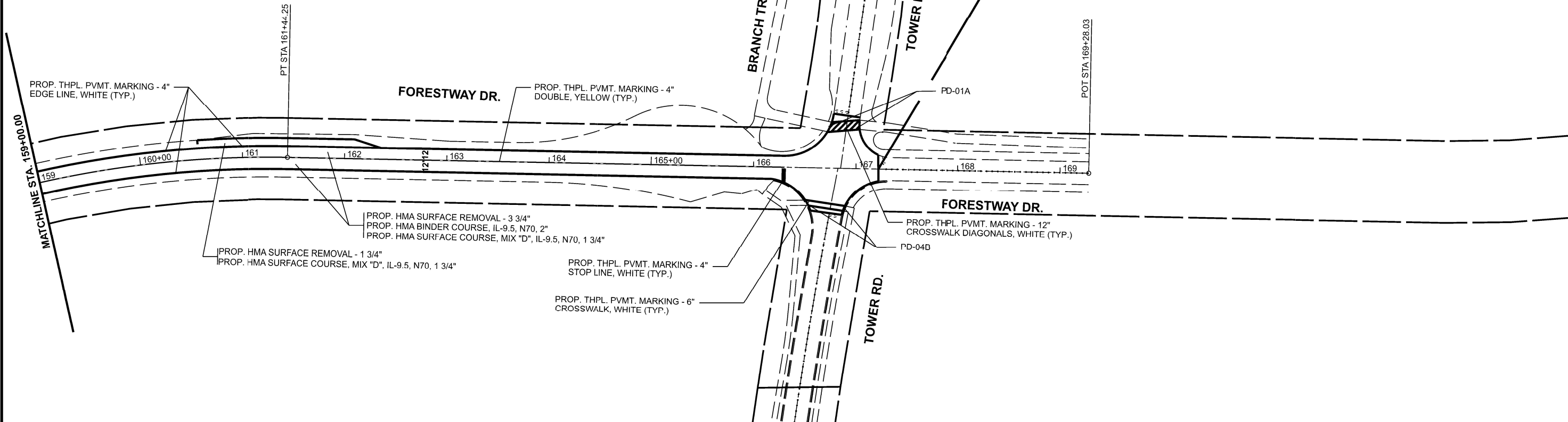
**STATE OF ILLINOIS  
 DEPARTMENT OF TRANSPORTATION**

**ROADWAY PLANS  
 FOREST WAY DR. FROM WILLOW RD. TO TOWER RD.**

SCALE: 1"=50'      SHEET      OF      SHEETS      STA. 129+00.00      TO STA. 159+00.00

C.H.	SECTION	COUNTY	TOTAL SHEETS	SHEET NO.
92	CH 0092 23 OVERLAY	COOK	20	7
CONTRACT NO. 62U81				
ILLINOIS FED. AID PROJECT				

**IMPROVEMENT ENDS  
STA. 167+22**



MODEL: Forest Way Cr - RdwayPlan03  
FILE NAME: c:\paw\work\paw\addisabebaw\0340353\rdh-plan.dgn

USER NAME = addis.abebaw	DESIGNED - ADDIS ABEBAW	REVISED -
PLOT SCALE = \$SCALE\$	DRAWN - NAWFAL ELAZIZI	REVISED -
PLOT DATE = 2/7/2024	CHECKED - SHAWN LEY	REVISED -
	DATE -	REVISED -

**STATE OF ILLINOIS  
DEPARTMENT OF TRANSPORTATION**

**ROADWAY PLANS  
FOREST WAY DR. FROM WILLOW RD. TO TOWER RD.**

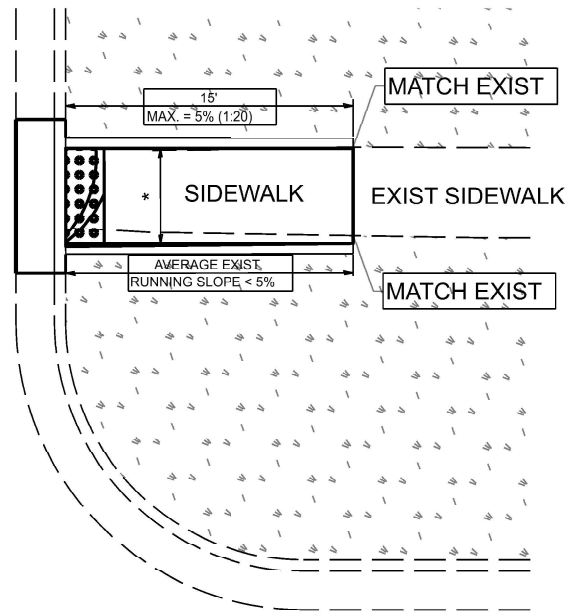
SCALE: 1"=50' SHEET OF 3 SHEETS STA. 159+00.00 TO STA. 174+00.00

C.H.	SECTION	COUNTY	TOTAL SHEETS	SHEET NO.
92	CH 0092 23 OVERLAY	COOK	20	8
			CONTRACT NO. 62U81	
ILLINOIS FED. AID PROJECT				

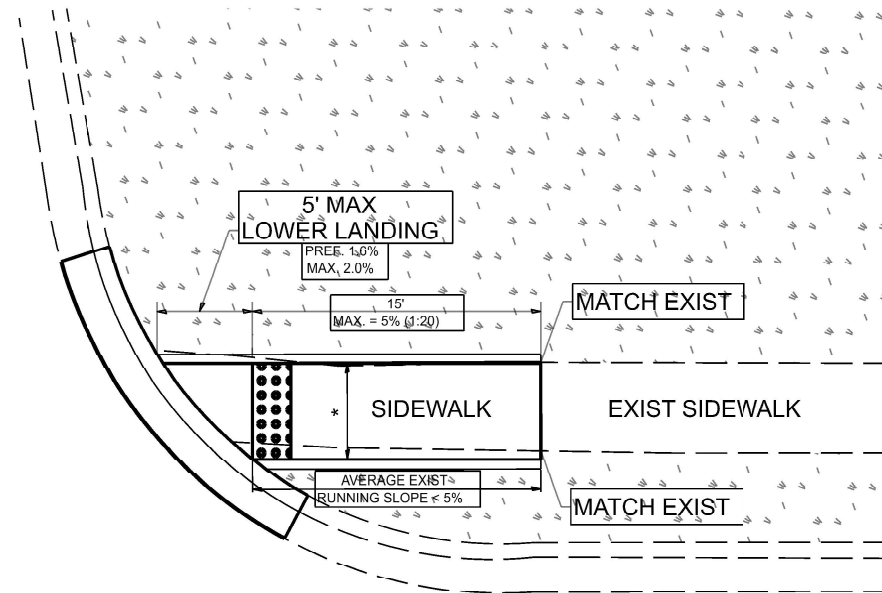


# ADA DETAIL FOR SINGLE PERPENDICULAR CURB RAMPS W/ EXIST. 5% OR LESS RUN. SLOPE

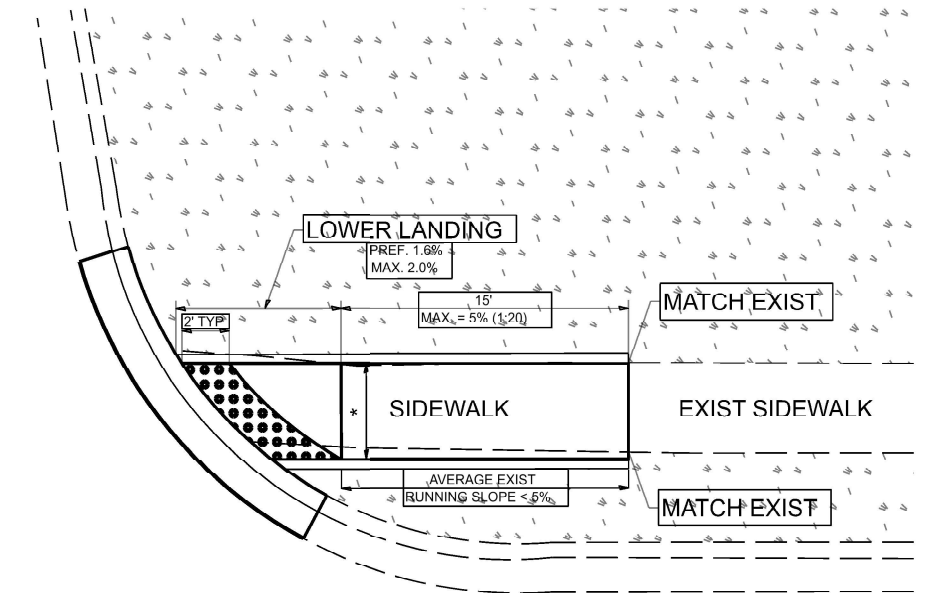
**PD-01A**



**PD-01B**



**PD-01C**



**DESIGNER NOTES:**

- 1) ALL CROSS SLOPES ARE PREFERRED 1.6% (1:64), MAXIMUM 2% (1:50).
- 2) SIDEWALK REALIGNMENT WILL REQUIRE DETAILED DESIGN.
- 3) AREAS SURROUNDED BY PCC/ASPHALT, BUILDINGS, OR ARE NEAR TO DRIVEWAYS, REALIGNED SIDEWALK, UTILITY AND SIGNAL POLES, OR WHEN PRIVATE SIDEWALK TIES IN, WILL REQUIRE DETAILED SURVEY AND DESIGN.
- 4) ALL BRICK CORNERS WILL REQUIRE SUPERVISOR APPROVAL BEFORE USING PROJECT DETAILS

**LEGEND**

- EXIST. GRASS
- PROPOSED SIDEWALK
- PROPOSED SIDE CURB
- DETECTABLE WARNINGS

**CONSTRUCTION NOTES:**

- 1) ALL CROSS SLOPES ARE PREFERRED 1.6% (1:64), MAXIMUM 2% (1:50) EXCEPT WHEN TRANSITIONING TO EXISTING SIDEWALK
- \* MATCH EXISTING SIDEWALK WIDTH

MODEL: Plan Single (Sheet)  
FILE NAME: Z:\DOT\CAD\_06D\Folder Master\_Files\DOT\CAD\_CONFIGURATION\Organization\Civil\DOT\_Standards\Detail\Sheet\Seeds\Civil\_Named\_Boundary\_Sheet\Seeds.dgn

USER NAME = eric.l.hornias	DESIGNED -	REVISED -
PLOT SCALE = \$SCALE\$	DRAWN - R. LEDEZMA	REVISED -
PLOT DATE = 8/30/2023	CHECKED -	REVISED -
	DATE - 10/02/2019	REVISED -

**STATE OF ILLINOIS  
DEPARTMENT OF TRANSPORTATION**

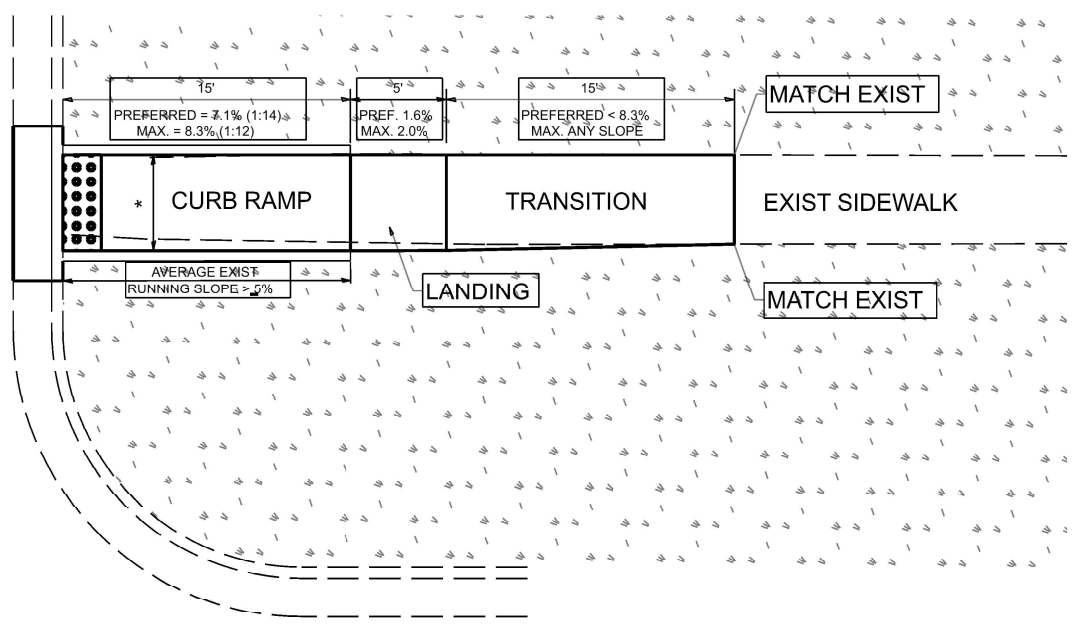
**PROJECT DETAIL FOR SINGLE PERPENDICULAR CURB RAMPS  
(PD-01)**

SCALE: NONE SHEET 1 OF 1 SHEETS STA. TO STA.

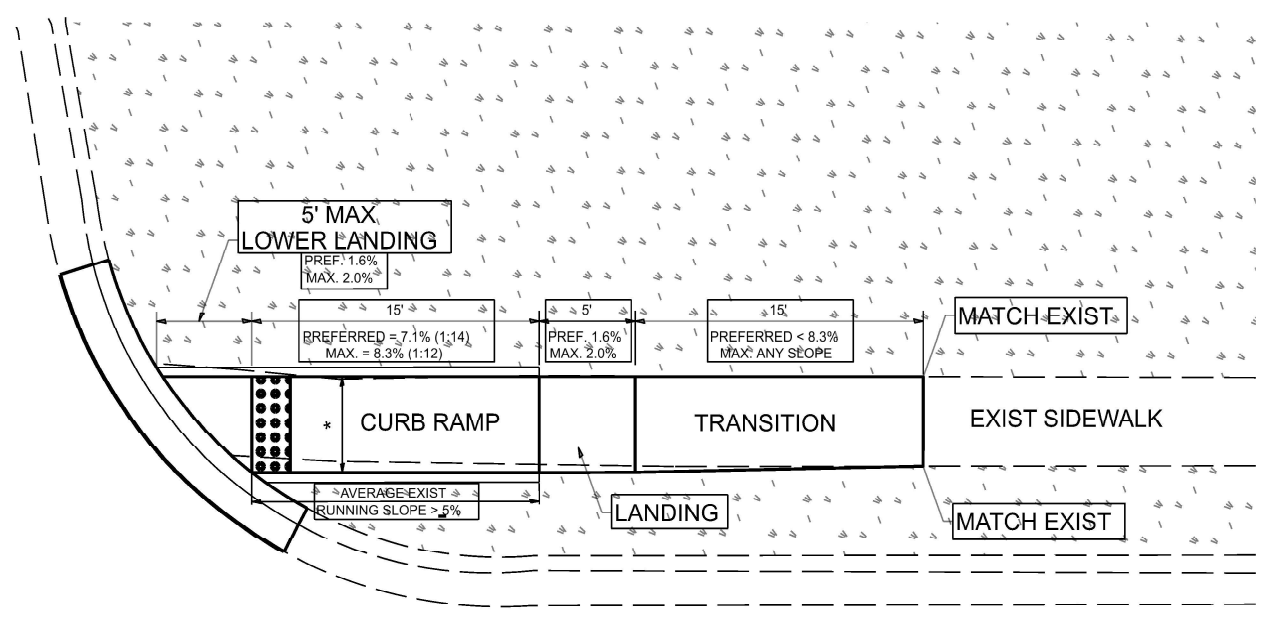
C.H.	SECTION	COUNTY	TOTAL SHEETS	SHEET NO.
92	CH 0092 23 OVERLAY	COOK	20	9
<b>PD-01</b>			CONTRACT NO. 02U01	
ILLINOIS FED. AID PROJECT				

# ADA DETAIL FOR SINGLE PERPENDICULAR CURB RAMPS W/ EXIST. 5% OR GREATER RUN. SLOPE

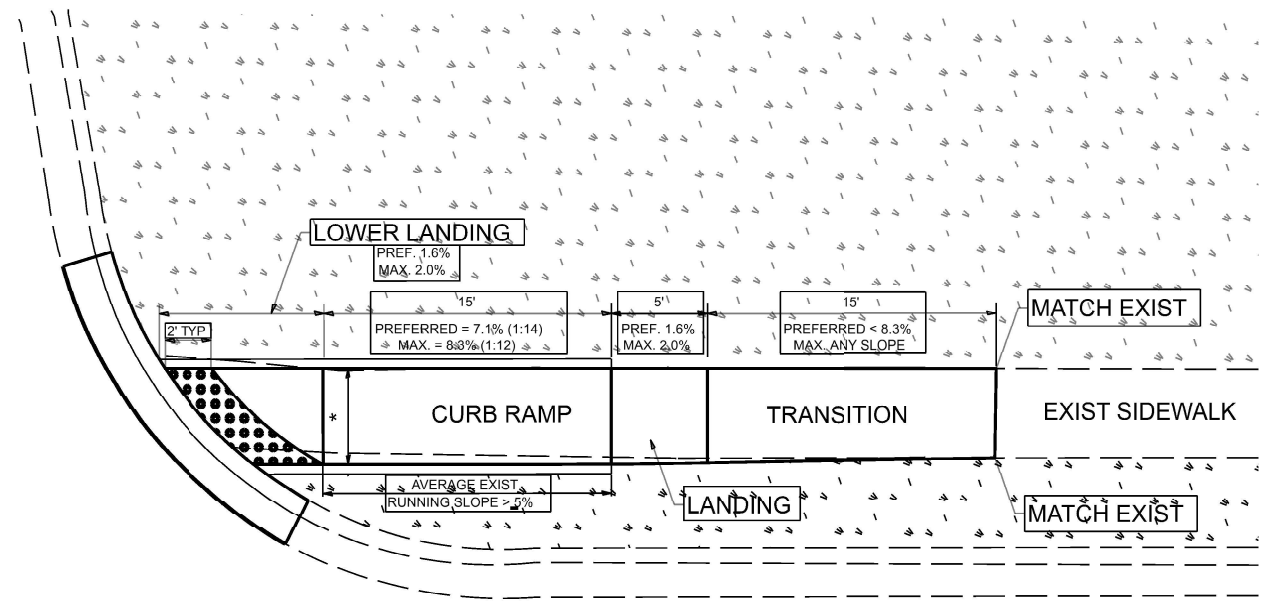
**PD-02A**



**PD-02B**



**PD-02C**



**DESIGNER NOTES:**

- 1) ALL CROSS SLOPES ARE PREFERRED 1.6% (1:64), MAXIMUM 2% (1:50).
- 2) SIDEWALK REALIGNMENT WILL REQUIRE DETAILED DESIGN.
- 3) AREAS SURROUNDED BY PCC/ASPHALT, BUILDINGS, OR ARE NEAR TO DRIVEWAYS, REALIGNED SIDEWALK, UTILITY AND SIGNAL POLES, OR WHEN PRIVATE SIDEWALK TIES IN, WILL REQUIRE DETAILED SURVEY AND DESIGN.
- 4) ALL BRICK CORNERS WILL REQUIRE SUPERVISOR APPROVAL BEFORE USING PROJECT DETAILS

**LEGEND**

- EXIST. GRASS
- PROPOSED SIDEWALK
- PROPOSED SIDE CURB
- DETECTABLE WARNINGS

**CONSTRUCTION NOTES:**

- 1) ALL CROSS SLOPES ARE PREFERRED 1.6% (1:64), MAXIMUM 2% (1:50) EXCEPT WHEN TRANSITIONING TO EXISTING SIDEWALK
- \* MATCH EXISTING SIDEWALK WIDTH

MODEL: Plan Single (Sheet) FILE NAME: Z:\DOT\CAD\_ORB\Folder\_Matter\Master\_Files\DOT\CAD\_CONNECT\Configuration\Organization\Civil\DOT\_Standards\Details\Sheet\_Specs\Civil\_Named\_Boundary\_SheetSpecs.dgn

USER NAME	= eric.l.thomas	DESIGNED	-	REVISED	-
DRAWN	- R. LEDEZMA	CHECKED	-	REVISED	-
PLOT SCALE	= \$SCALE\$	DATE	- 10/02/2019	REVISED	-
PLOT DATE	= 8/30/2023				

**STATE OF ILLINOIS  
DEPARTMENT OF TRANSPORTATION**

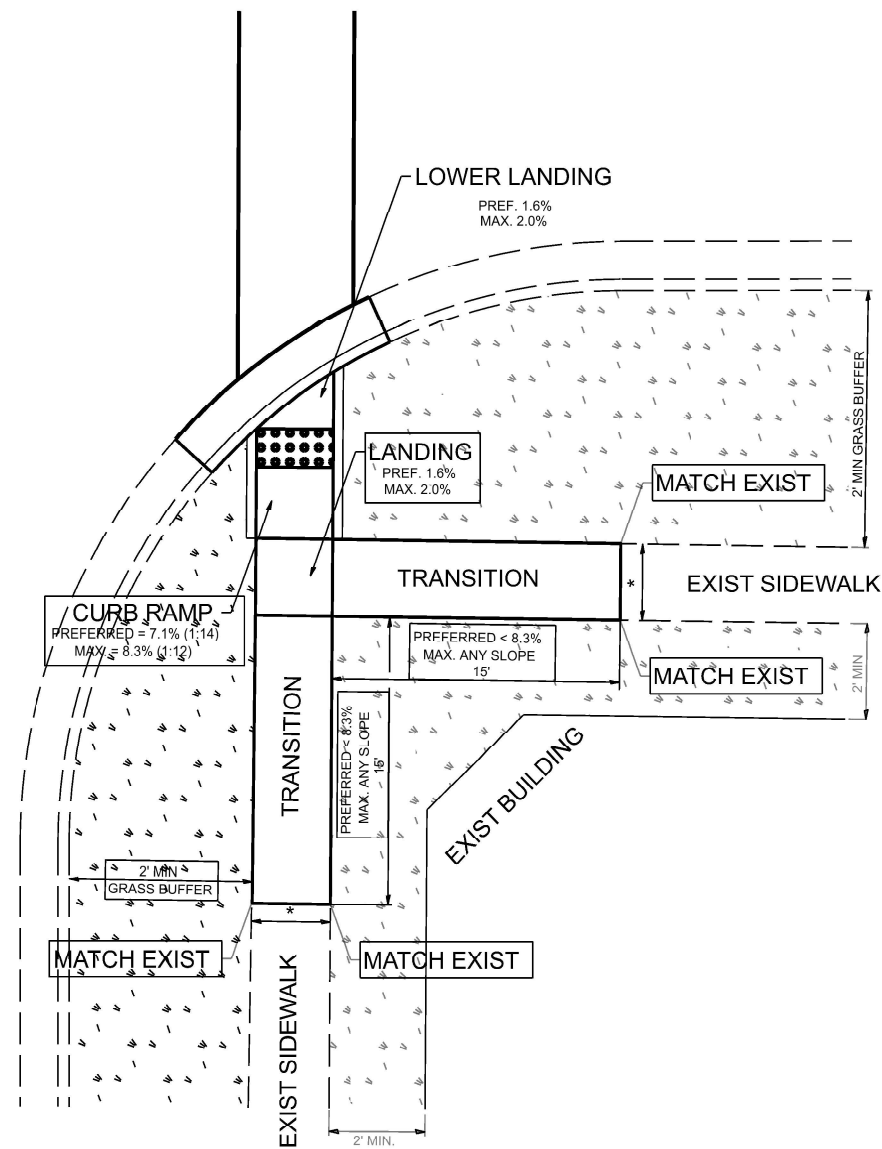
**PROJECT DETAIL FOR SINGLE PERPENDICULAR CURB RAMPS  
(PD-02)**

SCALE: NONE SHEET 1 OF 1 SHEETS STA. TO STA.

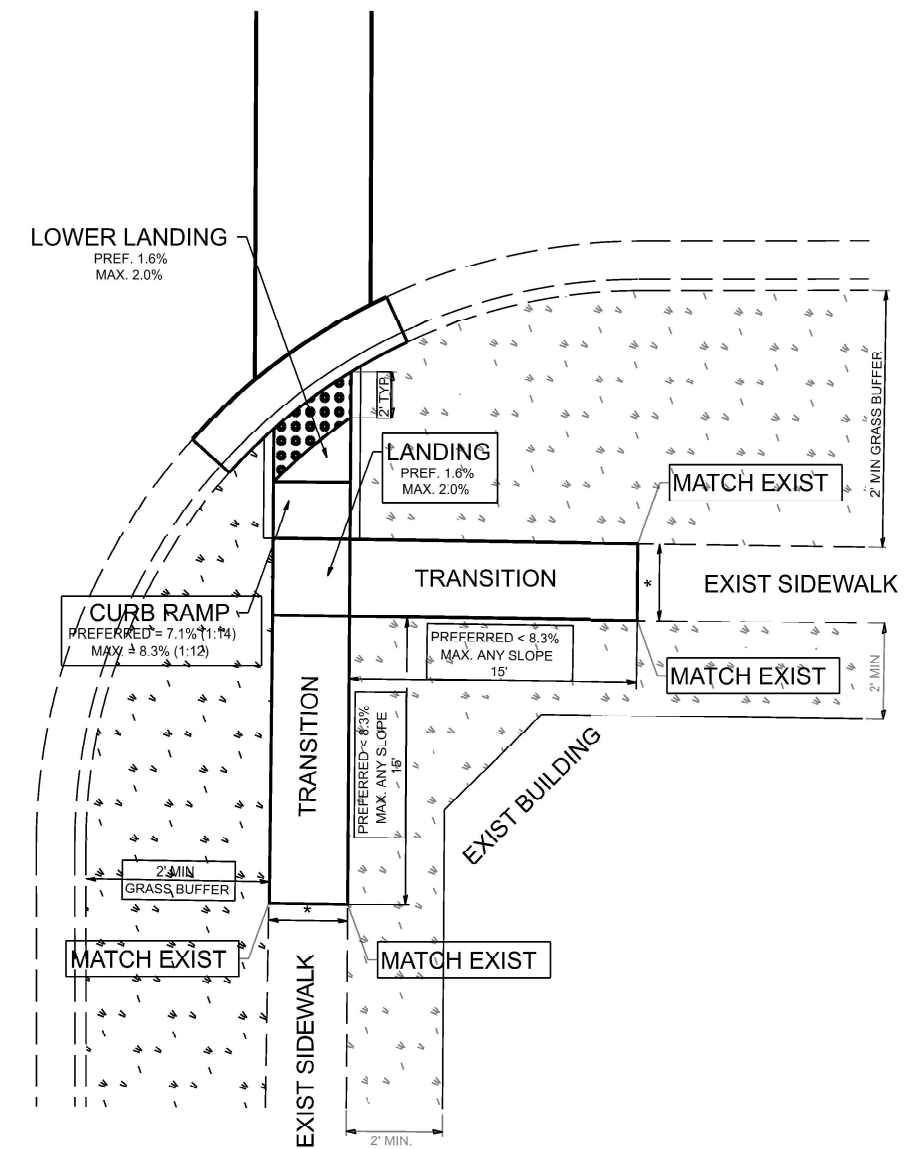
C.H.	SECTION	COUNTY	TOTAL SHEETS	SHEET NO.
92	CH 0092 23 OVERLAY	COOK	20	10
<b>PD-02</b>			CONTRACT NO. 02U81	
ILLINOIS FED. AID PROJECT				

# ADA DETAIL FOR SINGLE PERPENDICULAR CURB RAMPS W/ TURNING SPACE

**PD-04A**



**PD-04B**



**DESIGNER NOTES:**

- 1) ALL CROSS SLOPES ARE PREFERRED 1.6% (1:64), MAXIMUM 2% (1:50).
- 2) SIDEWALK REALIGNMENT WILL REQUIRE DETAILED DESIGN.
- 3) AREAS SURROUNDED BY PCC/ASPHALT, BUILDINGS, OR ARE NEAR TO DRIVEWAYS, REALIGNED SIDEWALK, UTILITY AND SIGNAL POLES, OR WHEN PRIVATE SIDEWALK TIES IN, WILL REQUIRE DETAILED SURVEY AND DESIGN.
- 4) ALL BRICK CORNERS WILL REQUIRE SUPERVISOR APPROVAL BEFORE USING PROJECT DETAILS

**LEGEND**

- EXIST. GRASS
- PROPOSED SIDEWALK
- PROPOSED SIDE CURB
- DETECTABLE WARNINGS

**CONSTRUCTION NOTES:**

- 1) ALL CROSS SLOPES ARE PREFERRED 1.6% (1:64), MAXIMUM 2% (1:50) EXCEPT WHEN TRANSITIONING TO EXISTING SIDEWALK
- \* MATCH EXISTING SIDEWALK WIDTH

MODEL: Plan Single (Sheet)  
FILE NAME: Z:\DOT\CAD\_06D\Folder Master\_Files\DOT\CAD\_CONFIGURATION\Organization\Civil\DOT\_Standards\Detail\Sheet\_Series\Civil\_Named\_Boundary\_SheetSeries.dgn

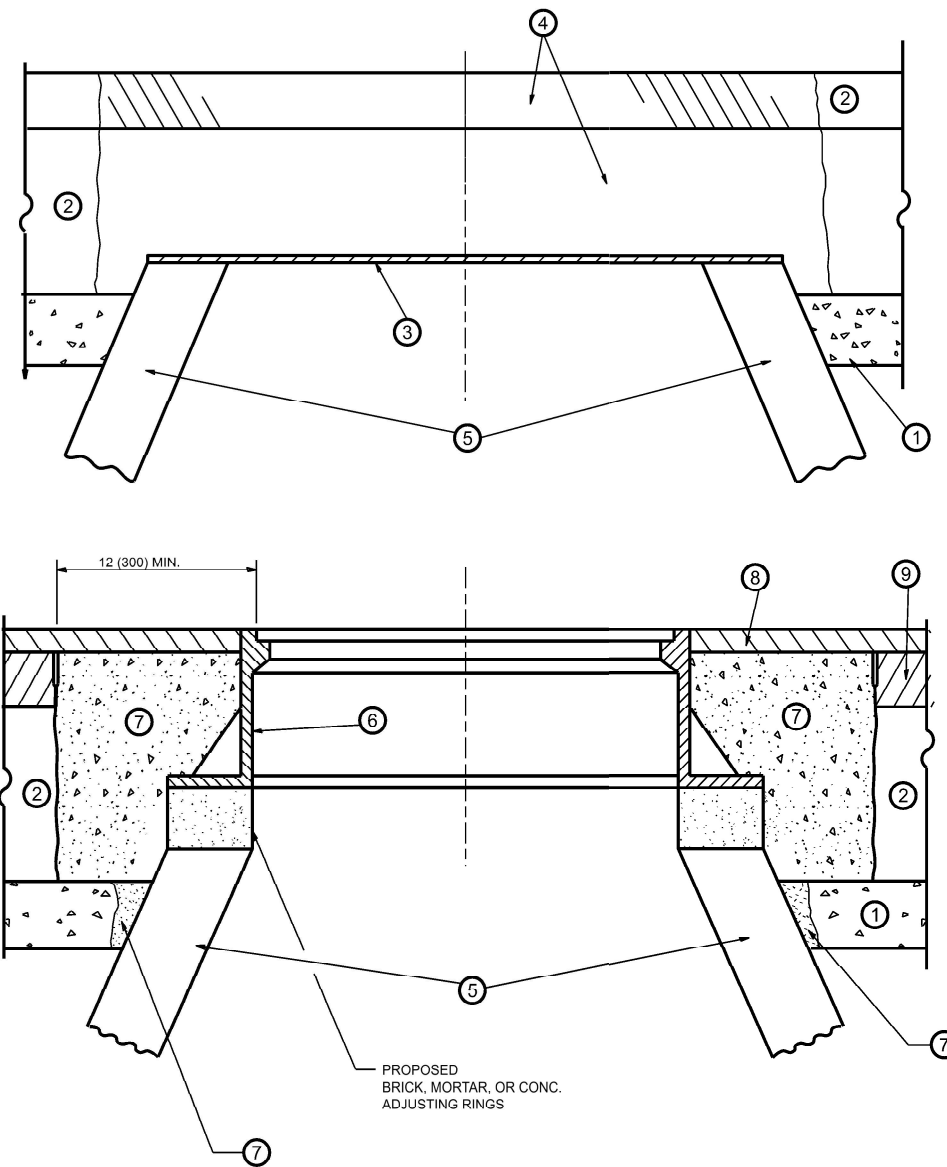
USER NAME - eric.l.thomas	DESIGNED -	REVISED -
PLOT SCALE = \$SCALE\$	DRAWN - R. LEDEZMA	REVISED -
PLOT DATE = 8/30/2023	CHECKED -	REVISED -
	DATE - 10/02/2019	REVISED -

**STATE OF ILLINOIS  
DEPARTMENT OF TRANSPORTATION**

**PROJECT DETAIL FOR SINGLE PERPENDICULAR CURB RAMPS WITH  
TURNING SPACE (PD-04)**

SCALE: NONE    SHEET 1 OF 1 SHEETS    STA.    TO STA.

C.H.	SECTION	COUNTY	TOTAL SHEETS	SHEET NO.
92	CH 0092 23 OVERLAY	COOK	21	11
<b>PD-04</b>			CONTRACT NO. 62U81	
ILLINOIS FED. AID PROJECT				



**DETAILS FOR FRAMES AND LIDS ADJUSTMENT  
WITH MILLING**

**NOTES**

1. EXISTING BROKEN FRAMES AND LIDS SHALL BE REMOVED AND DISPOSED OF BY THE CONTRACTOR AND SHALL BE REPLACED AS DIRECTED BY THE ENGINEER. REPLACEMENT FRAMES AND LIDS WILL BE PAID FOR IN ACCORDANCE WITH ARTICLE 109.04 OF THE STANDARD SPECIFICATIONS UNLESS A SEPARATE PAY ITEM HAS BEEN PROVIDED.
2. IF THE EXISTING LIDS ARE OPEN, THE FRAME WILL BE ADJUSTED TO THE ELEVATION OF THE MILLED PAVEMENT SURFACE PRIOR TO THE MILLING OPERATION. THE FRAME WILL NOT BE REMOVED AND COVERED BY THE METAL PLATE.
3. CITY OF CHICAGO CASTINGS ARE THE PROPERTY OF THE CITY AND THE CONTRACTOR SHALL NOTIFY THE CITY FOR REMOVAL AND DISPOSITION OF THE CASTINGS.
4. THE METAL PLATE USED TO COVER THE STRUCTURE SHALL REMAIN THE PROPERTY OF THE CONTRACTOR.

**CONSTRUCTION PROCEDURES**

**STAGE 1 (BEFORE PAVEMENT MILLING)**

- A) REMOVE A MINIMUM OF 12 (300) OF THE PAVEMENT FROM AROUND THE STRUCTURE.
- B) REMOVE THE EXISTING FRAME AND LID FROM THE STRUCTURE.
- C) COVER THE STRUCTURE OPENING WITH A 36 (900) DIAMETER METAL PLATE.
- D) BACKFILL WITH CRUSHED STONE AND HMA SURFACE MIX APPROVED BY THE ENGINEER. (MIN. 1 1/2 (40) HMA TO REMAIN AFTER MILLING).

**STAGE 2 (AFTER PAVEMENT MILLING)**

- A) REMOVE THE HMA SURFACE MIX AND CRUSHED STONE.
- B) INSTALL THE FRAME AND LID; ADJUST THE FRAME TO ITS FINAL SURFACE ELEVATION.
- C) THE SURROUNDING SPACE SHALL BE FILLED WITH CLASS PP-# CONCRETE TO THE ELEVATION OF THE SURFACE OF THE EXISTING BASE COURSE OR THE BINDER COURSE.

\*UNLESS OTHERWISE SPECIFIED IN THE PLANS.

THE PROCEDURE EXPLAINED ABOVE SHALL CONFORM TO THE APPLICABLE PORTIONS OF SECTIONS 353, 406, 602, AND 603 OF THE STANDARD SPECIFICATIONS EXCEPT THAT "THE CONTRACTOR SHALL ADJUST THE STRUCTURES TO THE FINISHED PAVEMENT ELEVATION NO MORE THAN 5 CALENDAR DAYS PRIOR TO PLACEMENT OF THE FINAL LIFT OF SURFACE UNLESS APPROVED BY THE ENGINEER."

**LEGEND**

- |  |                               |
|--|-------------------------------|
| ① SUB-BASE GRANULAR MATERIAL                 | ⑥ FRAME AND LID (SEE NOTES)   |
| ② EXISTING PAVEMENT                          | ⑦ CLASS*PP-1 CONCRETE         |
| ③ 36 (900) DIAMETER METAL PLATE              | ⑧ PROPOSED HMA SURFACE COURSE |
| ④ PROPOSED CRUSHED STONE AND HMA SURFACE MIX | ⑨ PROPOSED HMA BINDER COURSE  |
| ⑤ EXISTING STRUCTURE                         |                               |

**LOCATION OF STRUCTURES**

THE CONTRACTOR WILL BE REQUIRED TO KEEP A RECORD OF THE LOCATIONS OF THE BURIED STRUCTURES ACCORDING TO THE STATION AND DISTANCE LEFT OR RIGHT OF THE CENTERLINE OF PAVEMENT. UPON COMPLETION OF THE WORK, THE CONTRACTOR WILL DELIVER THE RECORD TO THE ENGINEER.

**BASIS OF PAYMENT**

1. REMOVING FRAMES AND LIDS ON DRAINAGE AND UTILITY STRUCTURES IN THE PAVEMENT PRIOR TO MILLING, AND ADJUSTING TO FINAL GRADE PRIOR TO PLACING THE SURFACE COURSE, WILL BE PAID FOR AT THE CONTRACT UNIT PRICE EACH FOR "FRAMES AND LIDS TO BE ADJUSTED (SPECIAL)."
2. THIS WORK WILL NOT BE PAID FOR WHEN DRAINAGE AND UTILITY STRUCTURES ARE SPECIFIED FOR PAYMENT AS STRUCTURE RECONSTRUCTION.
3. NEW FRAMES AND LIDS, WHEN SPECIFIED, WILL BE PAID FOR SEPARATELY.
4. WHEN STRUCTURES ARE TO BE ADJUSTED OR RECONSTRUCTED, THE LOWERING AND RAISING OF THE FRAMES AND LIDS WILL NOT BE PAID FOR SEPARATELY BUT WILL BE INCLUDED IN THE COST OF THE CORRESPONDING PAY ITEM.

ALL DIMENSIONS ARE IN INCHES (MILLIMETERS) UNLESS OTHERWISE SHOWN

MODEL: Plan Single (Sheet) FILE NAME: Z:\DOT\CAD\_ORG\Folder Master Files\DOT\CAD\_CONNECT\Configuration\Organization\Civil\DOT\_Standards\Drawings\Sheet\Standards.dgn

USER NAME = eric.l.hornias	DESIGNED - R. SHAH	REVISED - R. BORO 01-01-07
PLOT SCALE = \$SCALE\$	DRAWN -	REVISED - R. BORO 03-09-11
PLOT DATE = 8/30/2023	CHECKED -	REVISED - R. BORO 12-06-11
	DATE - 10-25-94	REVISED - K. SMITH 02-01-22

**STATE OF ILLINOIS  
DEPARTMENT OF TRANSPORTATION**

**DETAILS FOR  
FRAMES AND LIDS ADJUSTMENT WITH MILLING**

SCALE: NONE SHEET 1 OF 1 SHEETS STA. TO STA.

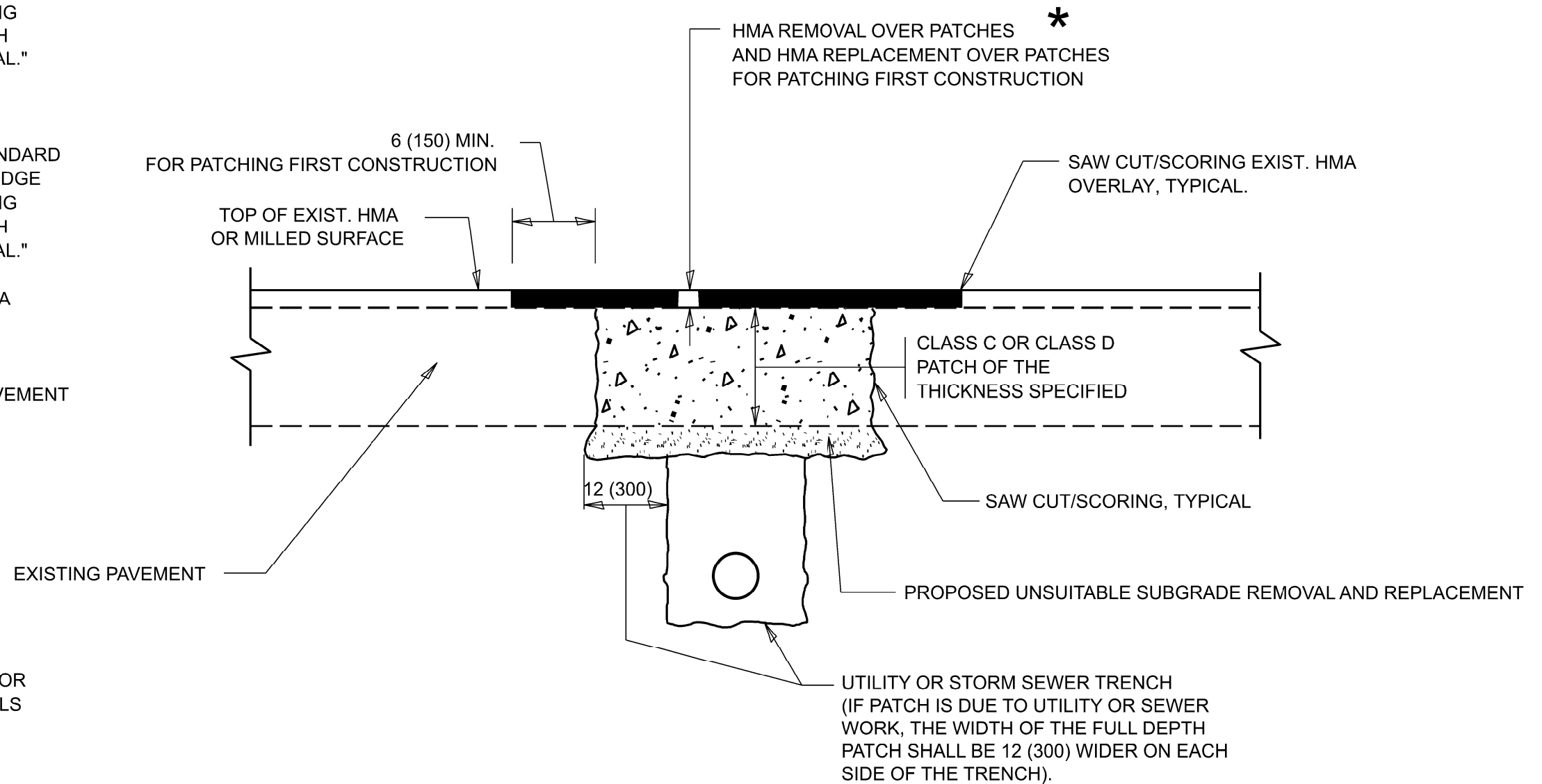
C.H.	SECTION	COUNTY	TOTAL SHEETS	SHEET NO.
92	CH 0092 23 OVERLAY	COOK	20	12
BD600-03 (BD-08)			CONTRACT NO. 02U81	
ILLINOIS FED. AID PROJECT				

## METHOD OF MEASUREMENT

REFER TO SECTION 442 OF THE STANDARD SPECIFICATIONS FOR ROAD AND BRIDGE CONSTRUCTION AND THE RECURRING SPECIAL PROVISION "PATCHING WITH HOT-MIX ASPHALT OVERLAY REMOVAL."

## BASIS OF PAYMENT

1. REFER TO SECTION 442 OF THE STANDARD SPECIFICATIONS FOR ROAD AND BRIDGE CONSTRUCTION AND THE RECURRING SPECIAL PROVISION "PATCHING WITH HOT-MIX ASPHALT OVERLAY REMOVAL."
2. SAW CUT/SCORING OF EXISTING HMA OVERLAY IS INCLUDED IN THE COST OF PAVEMENT PATCHING.
3. SAW CUT/SCORING OF EXISTING PAVEMENT IS INCLUDED IN THE COST OF PAVEMENT PATCHING.



\* SEE TYPICAL SECTIONS FOR THICKNESS AND MATERIALS

## SEQUENCE OF CONSTRUCTION (PATCHING FIRST)

1. REMOVE THE EXISTING HMA MATERIAL OVER THE AREA TO BE PATCHED.
2. REMOVE AND REPLACE WITH CLASS C OR D PATCH.
3. REPLACE HMA MATERIAL OVER THE AREA TO BE PATCHED.

## SEQUENCE OF CONSTRUCTION (MILLING FIRST)

1. MILL HMA FIRST IF THERE IS AT LEAST 4 1/2 INCHES OR MORE OF HMA MATERIAL ON TOP OF THE EXISTING PAVEMENT OR IF THE PAVEMENT IS FULL DEPTH HMA. A MINIMUM OF 2 INCHES OF HMA MATERIAL SHALL BE IN PLACE AFTER MILLING.
2. REMOVE AND REPLACE WITH FULL DEPTH CLASS D PATCHES TO TOP OF MILLED SURFACE.

ALL DIMENSIONS ARE IN INCHES (MILLIMETERS) UNLESS OTHERWISE SHOWN.

MODEL: Plan Single (Sheet)  
FILE NAME: Z:\DOT\CAD\_ORB\Folder Master Files\DOT\CAD\_CONNECT\Configuration\Organization\Civil\DOT\_Standards\DimLib\Sheet Specs\Civil\_Named\_Boundary\_SheetSpecs.dgn

USER NAME = eric.l.hornias	DESIGNED - R. SHAH	REVISED - R. BORO 01-01-07
PLOT SCALE = \$SCALE\$	DRAWN -	REVISED - R. BORO 09-04-07
PLOT DATE = 8/30/2023	CHECKED -	REVISED - K. ENG 10-27-08
	DATE - 10-25-94	REVISED - K. SMITH 02-01-22

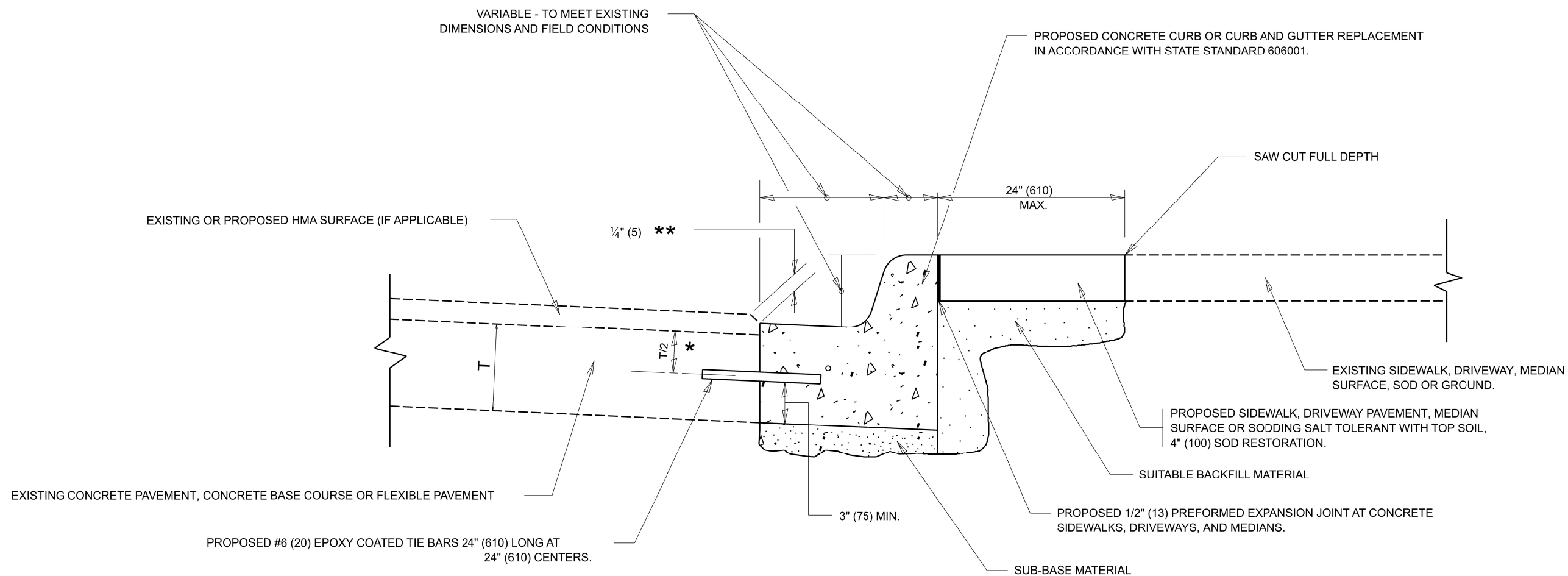
STATE OF ILLINOIS  
DEPARTMENT OF TRANSPORTATION

PAVEMENT PATCHING FOR  
HMA SURFACED PAVEMENT

SCALE: NONE SHEET 1 OF 1 SHEETS STA. TO STA.

C.H.	SECTION	COUNTY	TOTAL SHEETS	SHEET NO.
92	CH 0092 23 OVERLAY	COOK	20	13
BD400-04 (BD-22)			CONTRACT NO. 02U81	
ILLINOIS FED. AID PROJECT				

MODEL: Plan Study (Sheet)  
 FILE NAME: Z:\DOTCAD\_ORD\Folder\_Master\Master\_Files\DOTCAD\_CONNECT\Configuration\Organization\Civil\DOT\_Standards\Drawings\Sheet\_Standards\Sheet\_Standards.dgn



- \* 3" (75) MINIMUM FROM TOP AND BOTTOM OF THE CONCRETE PAVEMENT OR BASE COURSE.
- \*\* IF THE FINAL SURFACE OF THE PAVEMENT IS CONCRETE, THE GUTTER IS TO BE FLUSH WITH THE PAVEMENT.

### BASIS OF PAYMENT

THIS WORK WILL BE PAID FOR AT THE CONTRACT UNIT PRICE PER FOOT (METER) FOR "CURB REMOVAL AND REPLACEMENT" OR "COMBINATION CONCRETE CURB AND GUTTER REMOVAL AND REPLACEMENT".

# CURB OR CURB AND GUTTER REMOVAL AND REPLACEMENT

ALL DIMENSIONS ARE IN INCHES (MILLIMETERS) UNLESS OTHERWISE SHOWN.

USER NAME = eric.l.thomas	DESIGNED - A. HOUSEH	REVISED - A. ABBAS 03-21-97
	DRAWN -	REVISED - M. GOMEZ 01-22-01
PLOT SCALE = \$\$SCALE\$	CHECKED -	REVISED - R. BORO 12-15-09
PLOT DATE = 8/30/2023	DATE - 03-11-94	REVISED - K. SMITH 07-11-19

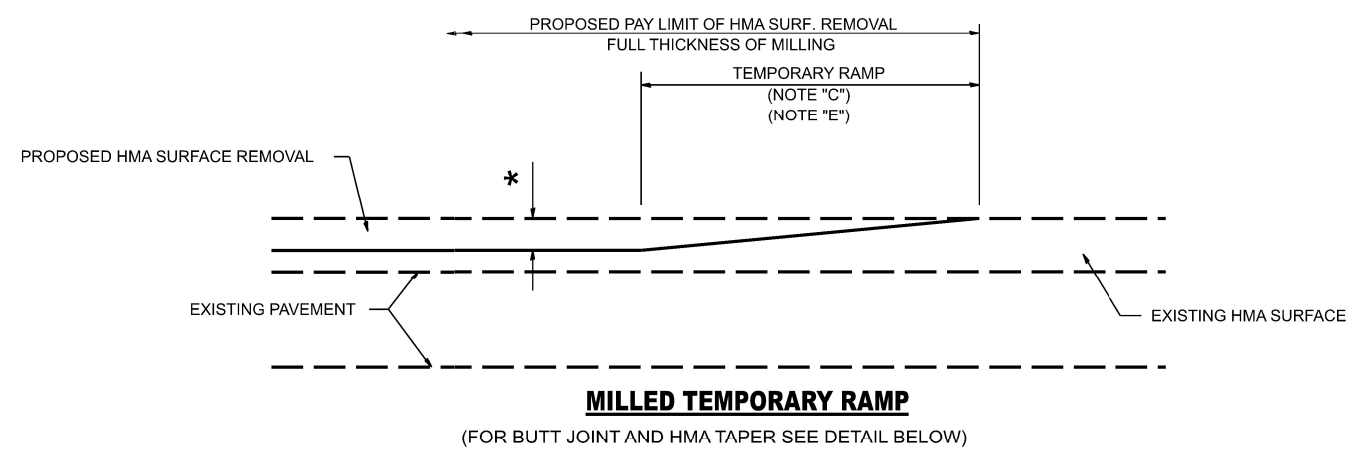
STATE OF ILLINOIS  
DEPARTMENT OF TRANSPORTATION

CURB OR CURB AND GUTTER  
REMOVAL AND REPLACEMENT

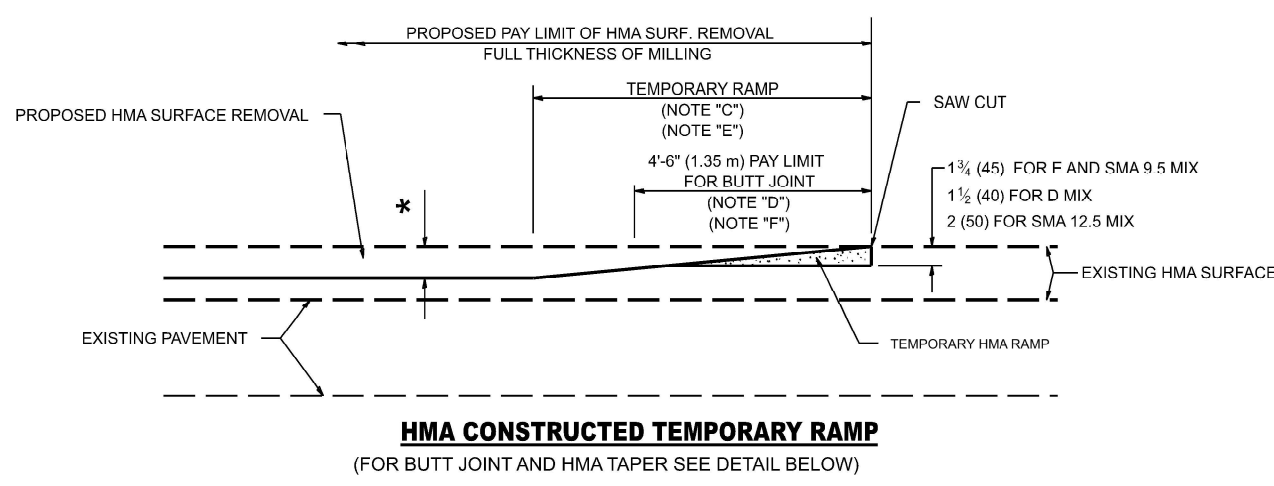
SCALE: NONE SHEET 1 OF 1 SHEETS STA. TO STA.

C.H.	SECTION	COUNTY	TOTAL SHEETS	SHEET NO.
92	CH 0092 23 OVERLAY	COOK	20	14
<b>BD600-06 (BD-24)</b>			CONTRACT NO. 62U81	
ILLINOIS FED. AID PROJECT				

MODEL: Plan Single (Sheet)  
 FILE NAME: Z:\DOT\CAD\_ORG\Folder Master Files\DOT\CAD\_CONNECT\Configuration\Organization\Civil\DOT\_Standards\Drawings\Sheet Specs\Civil\_Named\_Boundary\_SheetSpecs.dgn

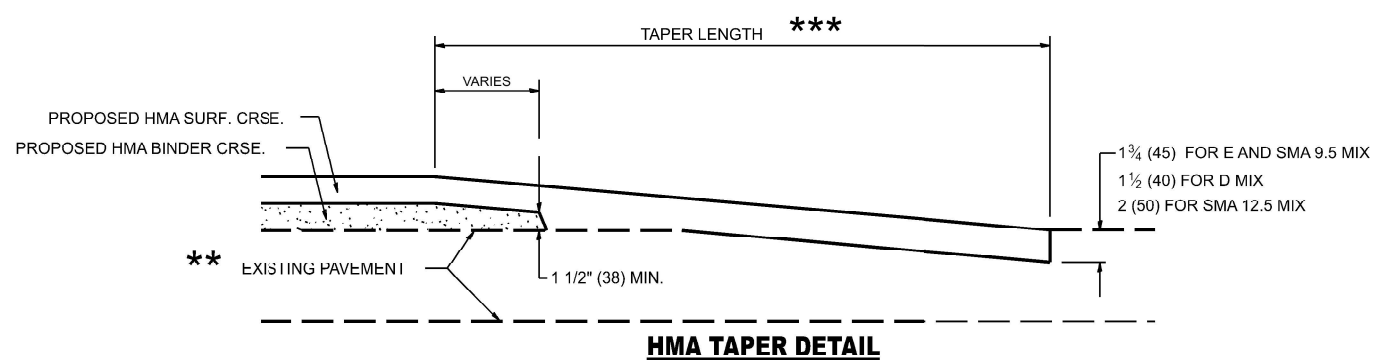
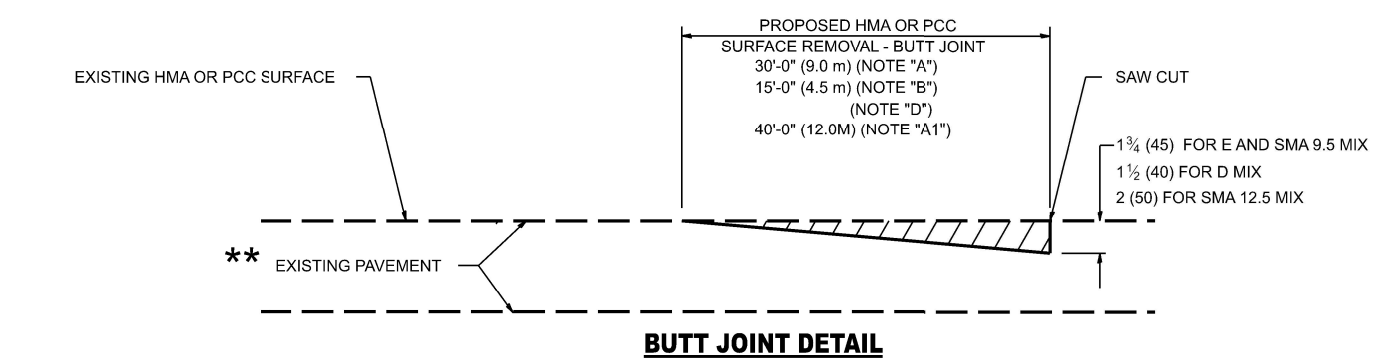


**OPTION 1**



**OPTION 2**

**TYPICAL TEMPORARY RAMP**



**TYPICAL BUTT JOINT AND HMA TAPER FOR RESURFACING ONLY**

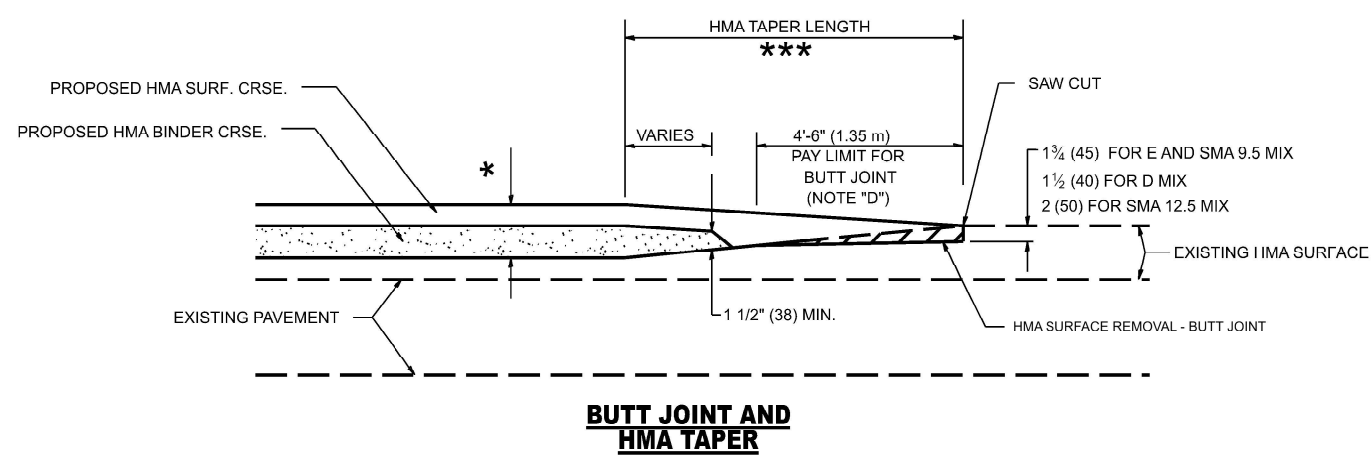
\*\* PC CONCRETE, HMA OR HMA RESURFACED PAVEMENT.

**GENERAL NOTES**

- A. MAINLINE ARTERIAL ROADWAYS AND MAJOR SIDE ROADS.
- A1. INTERSTATES
- B. MINOR SIDE ROADS.
- C. THE TEMP. RAMP SHALL BE CONSTRUCTED IMMEDIATELY UPON REMOVAL OF THE EXISTING HMA SURFACE.
- D. THE BUTT JOINT SHALL BE CONSTRUCTED IMMEDIATELY PRIOR TO PLACING THE PROPOSED HMA COURSES.
- E. TAPER THE TEMP. RAMP AT A RATE OF 3' - 4" (1.02m) PER 1 INCH (25 mm) OF MILLING THICKNESS.  
\* SEE TYPICAL SECTIONS FOR MILLING THICKNESS.
- F. SEE ARTICLE 406.08 AND 406.14 OF THE STANDARD SPECIFICATIONS FOR "HMA AND/OR PCC SURFACE REMOVAL, BUTT JOINT".  
\*\*\* 20'-0" (6.1 m) PER 1 (25) RESURFACING (NOTE "A")  
10'-0" (3.0 m) PER 1 (25) RESURFACING (NOTE "B")

**BASIS OF PAYMENT**

- 1. THE BUTT JOINT WILL BE PAID FOR AT THE CONTRACT UNIT PRICE PER SQUARE YARD (SQUARE METER) FOR "HOT-MIX ASPHALT SURFACE REMOVAL - BUTT JOINT" OR FOR "PORTLAND CEMENT CONCRETE SURFACE REMOVAL - BUTT JOINT".
- 2. THE TEMPORARY RAMP AND SAW CUT SHALL BE INCLUDED IN THE UNIT COST FOR HMA OR PCC SURFACE REMOVAL-BUTT JOINT.



**TYPICAL BUTT JOINT AND HMA TAPER FOR MILLING AND RESURFACING**

ALL DIMENSIONS ARE IN INCHES (MILLIMETERS) UNLESS OTHERWISE SHOWN.

USER NAME = eric.l.tromas	DESIGNED - M. DE YONG	REVISED - A. ABBAS 03-21-97
PLOT SCALE = \$SCALES	DRAWN -	REVISED - M. GOMEZ 04-06-01
PLOT DATE = 8/30/2023	CHECKED -	REVISED - R. BORO 01-01-07
	DATE - 06-13-90	REVISED - K. SMITH 11-18-22

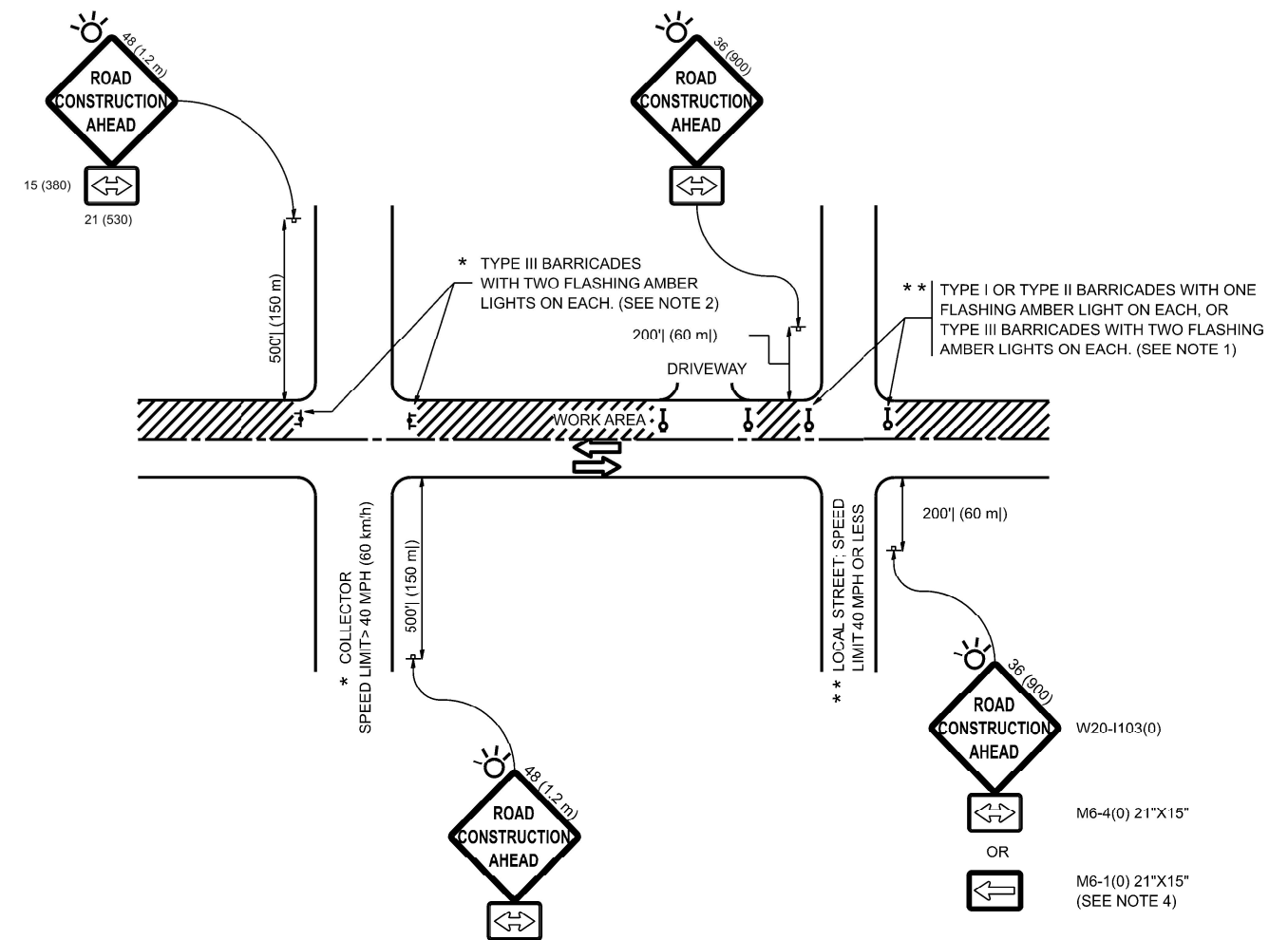
STATE OF ILLINOIS  
DEPARTMENT OF TRANSPORTATION

BUTT JOINT AND  
HMA TAPER DETAILS

SCALE: NONE SHEET 1 OF 1 SHEETS STA. TO STA.

C.H.	SECTION	COUNTY	TOTAL SHEETS	SHEET NO.
92	CH 0092 23 OVERLAY	COOK	20	15
BD400-05 BD-32			CONTRACT NO. 62U61	
ILLINOIS FED. AID PROJECT				

MODEL: Plan Single (Sheet)  
 FILE NAME: Z:\DOT\CAD\_ORB\Folder Master\Master Files\DOT\CAD\_CONNECT\Configuration\Organization\Civil\DOT\_Standards\Drawings\Sheet Specs\Civil\_Named\_Boundary\_SheetSpecs.dgn



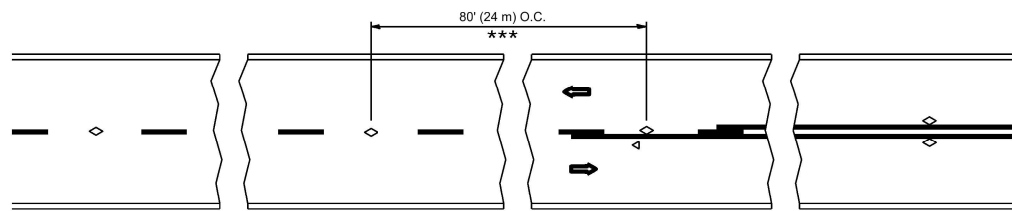
**NOTES:**

- SIDE ROAD WITH A SPEED LIMIT OF 40 MPH (60 km/h) OR LESS AS SHOWN ON THE DRAWING AND AS DIRECTED BY THE ENGINEER:
  - ONE "ROAD CONSTRUCTION AHEAD" SIGN 36 x 36 (900x900) WITH A FLASHER MOUNTED ON IT APPROXIMATELY 200' (60 m) IN ADVANCE OF THE MAIN ROUTE.
  - THE CLOSED PORTION OF THE MAIN ROUTE SHALL BE PROTECTED BY BLOCKING WITH TYPE I, TYPE II OR TYPE III BARRICADES, 1/3 OF THE CROSS SECTION OF THE CLOSED PORTION.
- SIDE ROAD WITH A SPEED LIMIT GREATER THAN 40 MPH (60 km/h) AS SHOWN ON THE DRAWING AND AS DIRECTED BY THE ENGINEER:
  - ONE "ROAD CONSTRUCTION AHEAD" SIGN 48 x 48 (1.2 m x 1.2 m) WITH A FLASHER MOUNTED ON IT APPROXIMATELY 500' (150 m) IN ADVANCE OF THE MAIN ROUTE.
  - THE CLOSED PORTION OF THE MAIN ROUTE SHALL BE PROTECTED BY BLOCKING WITH TYPE III BARRICADES, 1/2 OF THE CROSS SECTION OF THE CLOSED PORTION.
- CONES MAY BE SUBSTITUTED FOR BARRICADES OR DRUMS AT HALF THE SPACING DURING DAY OPERATIONS. CONES SHALL BE A MINIMUM OF 28 (710) IN HEIGHT.
- WHEN THE SIDE ROAD LIES BETWEEN THE BEGINNING OF THE MAINLINE SIGNING AND THE WORK ZONE, A SINGLE HEADED ARROW (M6-1) SHALL BE USED IN LIEU OF THE DOUBLE HEADED ARROW (M6-4).
- WHEN WORK IS BEING PERFORMED ON A SIDE ROAD OR DRIVEWAY, FOLLOW THE APPLICABLE STANDARD(S). THE DIRECTIONAL ARROW (M6-1 OR M6-4) SHALL BE COVERED OR REMOVED WHEN NO LONGER CONSISTENT WITH THE TRAFFIC CONTROL SET-UP.
- ADVANCE WARNING SIGNS ARE TO BE OMITTED ON DRIVEWAYS UNLESS OTHERWISE SPECIFIED IN THE PLANS OR BY THE ENGINEER.
- THE TRAFFIC CONTROL AND PROTECTION FOR SIDE ROADS, INTERSECTIONS, AND DRIVEWAYS SHALL BE INCLUDED IN THE COST OF SPECIFIED TRAFFIC CONTROL STANDARDS OR ITEMS.

All dimensions are in inches (millimeters) unless otherwise shown.

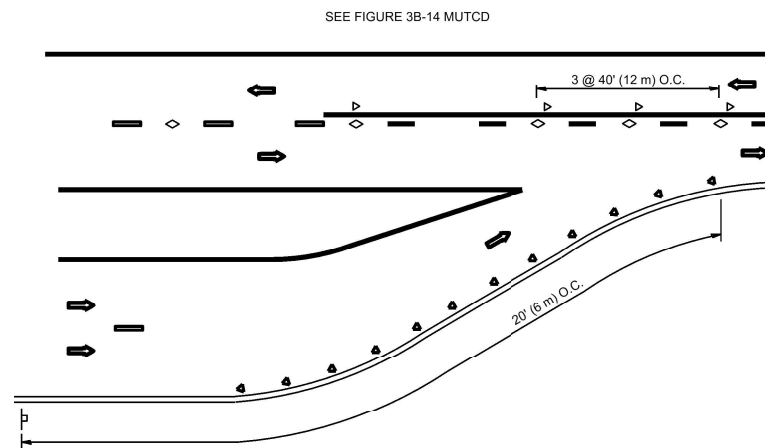
USER NAME = eric.l.tromas	DESIGNED - L.H.A.	REVISED - A. HOUSEH 10-15-96	<b>STATE OF ILLINOIS DEPARTMENT OF TRANSPORTATION</b>	<b>TRAFFIC CONTROL AND PROTECTION FOR SIDE ROADS, INTERSECTIONS, AND DRIVEWAYS</b>	C.H.	SECTION	COUNTY	TOTAL SHEETS	SHEET NO.		
PLOT SCALE = \$SCALE\$	CHECKED -	REVISED - T. RAMMACHER 01-06-00			92	CH 0092 23 OVERLEY	COOK	20	16		
PLOT DATE = 8/30/2023	DATE - 06-89	REVISED - A. SCHUETZE 07-01-13			<b>TC-10</b>		CONTRACT NO. 02U81				
		REVISED - A. SCHUETZE 09-15-16			ILLINOIS FED. AID PROJECT						
					SCALE:	SHEET	OF	SHEETS	STA.	TO	STA.



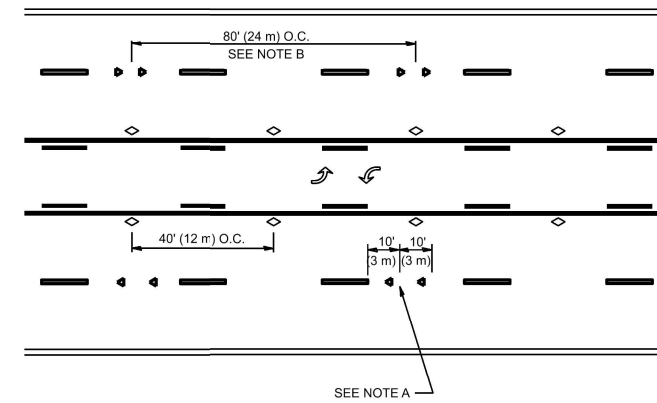


\*\*\* REDUCE TO 40' (12 m) O.C. ON CURVES WITH POSTED OR ADVISORY SPEED 45 M.P.H. (70 km/h) OR LESS.

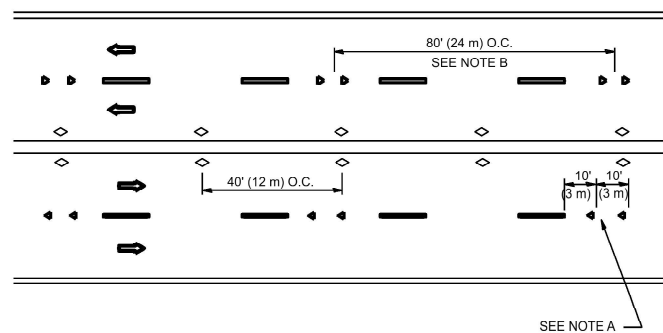
**TWO-LANE/TWO-WAY**



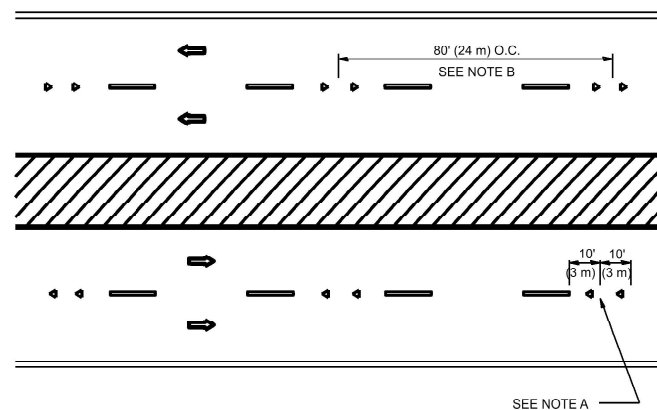
**LANE REDUCTION TRANSITION**



**TWO-WAY LEFT TURN**



**MULTI-LANE/UNDIVIDED**



**MULTI-LANE/DIVIDED**

**GENERAL NOTES**

1. MARKERS USED WITH DASHED LINES SHALL BE CENTERED IN THE GAP BETWEEN SEGMENTS.
2. MARKERS USED ADJACENT TO SOLID LINES SHALL BE OFFSET 2 TO 3 (50 TO 75) TOWARD TRAFFIC AS SHOWN.
3. MARKERS THROUGH TANGENTS LESS THAN 500' (150 m) IN LENGTH BETWEEN CURVES SHALL BE INSTALLED AT THE LESSER OF THE TWO CURVE SPACINGS.
4. MARKERS ARE TO BE USED ADJACENT TO BOTH SOLID WHITE LINES IN DUAL LEFT TURN LANES

**SYMBOLS**

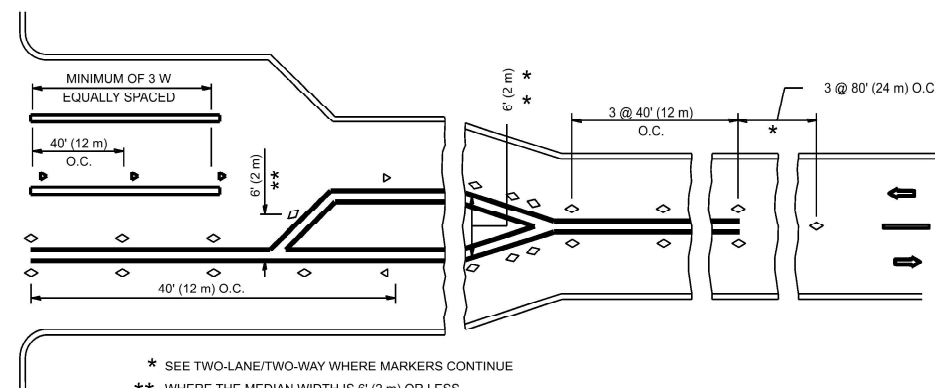
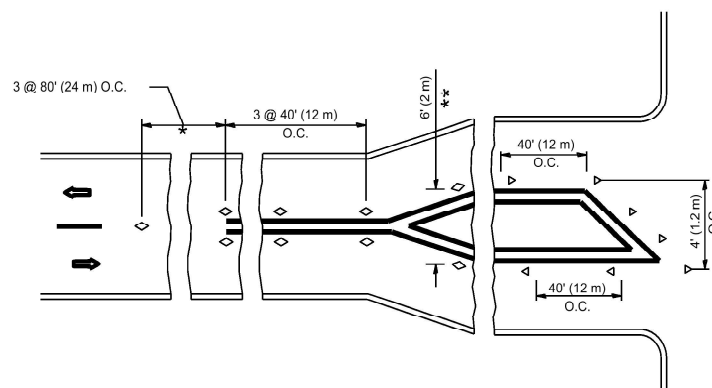
- YELLOW STRIPE
- WHITE STRIPE
- ◀ ONE-WAY AMBER MARKER
- ◀ ONE-WAY CRYSTAL MARKER (W/O)
- ◊ TWO-WAY AMBER MARKER

**LANE MARKER NOTES**

- A. USE DOUBLE LANE LINE MARKERS SPACED AS SHOWN.
- B. REDUCE TO 40' (12 m) O.C. ON CURVES WHERE ADVISORY SPEEDS ARE 10 M.P.H (20 km/h) LOWER THAN POSTED SPEEDS.

**DESIGN NOTES**

1. DOUBLE LANE LINE MARKERS SHALL BE USED UNLESS SPECIFIED OTHERWISE.
2. EXCEPT AS SHOWN ON THE LANE REDUCTION TRANSITION AND FREEWAY EXIT RAMP DETAIL, MARKERS ARE NOT TO BE SPECIFIED ON RIGID EDGE LINES.
3. THE EXACT MARKER LIMITS, SPACING, AND COLOR SHALL BE INCLUDED IN THE PLANS WHEN STANDARD SPECIFICATIONS ARE NOT BEING USED.
4. MARKERS SHOULD NOT BE USED ALONGSIDE CURBS EXCEPT FOR EXTREMELY SHORT SECTIONS OF CURBS WHERE NOT MORE THAN TWO MARKERS WOULD BE INVOLVED.



\* SEE TWO-LANE/TWO-WAY WHERE MARKERS CONTINUE  
 \*\* WHERE THE MEDIAN WIDTH IS 6' (2 m) OR LESS USE TWO-WAY MARKERS.

**TURN LANES**

All dimensions are in inches (millimeters) unless otherwise shown.

MODEL: Plan Single (Sheet) FILE NAME: Z:\DOT\CAD\_ORB\Folder Master Master Files\DOT\CAD\_CONNECT\Configuration\Organization\Civil\DOT\_Standards\Drawings\Sheet Seals\Civil\_Named\_Boundary\_SheetSeals.dgn

USER NAME = eric.l.torres	DESIGNED -	REVISED - T. RAMMACHER 03-12-99
PLOT SCALE = \$SCALE\$	DRAWN -	REVISED - T. RAMMACHER 01-06-00
PLOT DATE = 8/30/2023	CHECKED -	REVISED - C. JUCIUS 09-09-09
	DATE -	REVISED - C. JUCIUS 07-01-13

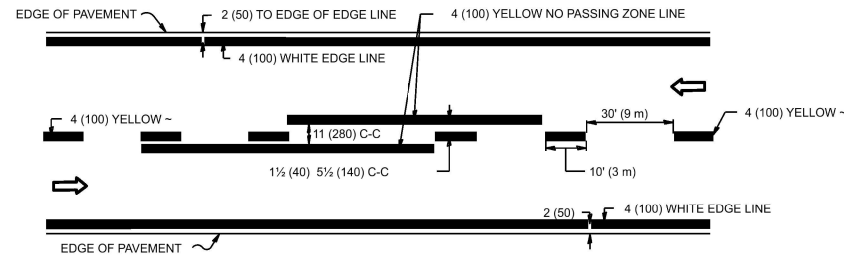
STATE OF ILLINOIS  
DEPARTMENT OF TRANSPORTATION

TYPICAL APPLICATIONS  
RAISED REFLECTIVE PAVEMENT MARKERS (SNOW-PLOW RESISTANT)

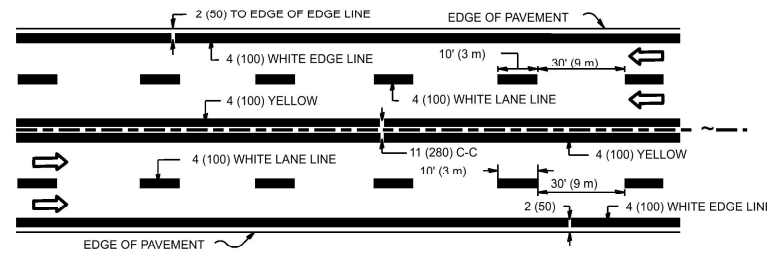
SCALE: NONE SHEET 1 OF 1 SHEETS STA. TO STA.

C.H.	SECTION	COUNTY	TOTAL SHEETS	SHEET NO.
92	CH 0092 23 OVERLAY	COOK	20	17
TC-11			CONTRACT NO. 62U81	
ILLINOIS FED. AID PROJECT				

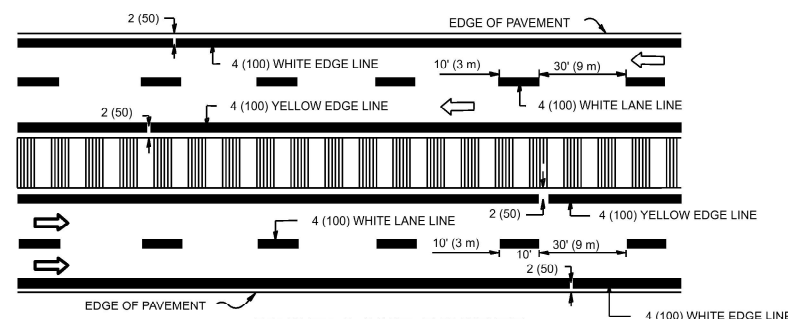
MODEL: Plan Single (Sheet) FILE NAME: Z:\DOT\CAD\_ORB\Folder Master\Master\_Files\DOT\CAD\_Connect\Configuration\Organization\Civil\DOT\_Standards\Drawings\Sheet Seals\Civil\_Named\_Boundary\_SheetSeals.dgn



**2-LANE ROADWAY**

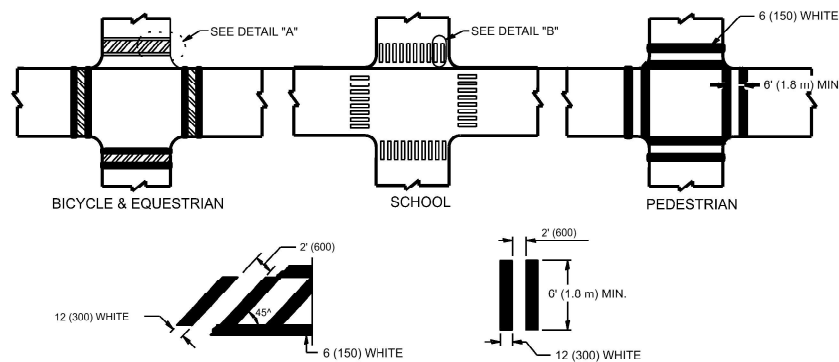


**MULTI-LANE UNDIVIDED**



**MULTI-LANE DIVIDED WITH MEDIAN**

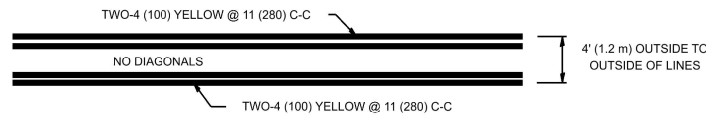
**TYPICAL LANE AND EDGE LINE MARKING**



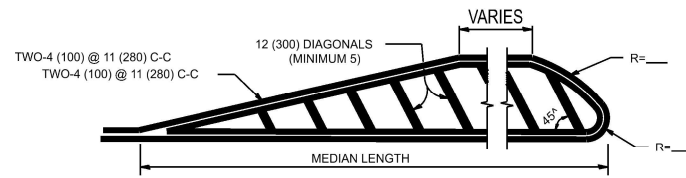
**DETAIL "A"** **DETAIL "B"**

**TYPICAL CROSSWALK MARKING**

\* MARKINGS SHALL BE INSTALLED PARALLEL TO THE CENTERLINE OF THE ROAD WHICH IT CROSSES



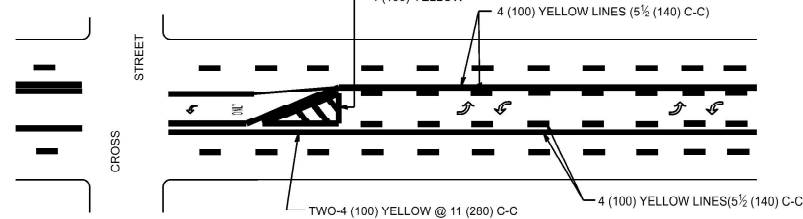
**4' (1.2 m) WIDE MEDIANS ONLY**



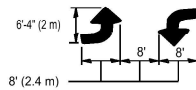
FOR MEDIAN LENGTHS WHERE DIAGONAL SPACING CANNOT BE ATTAINED, USE 5 (FIVE) EQUALLY SPACED DIAGONAL LINES.

DIAGONAL LINE SPACING: 50' (15 m) C-C (LESS THAN 30MPH (50 km/h)) 75' (25 m) C-C (30MPH (50 km/h) TO 45MPH (70 km/h)) 150' (45 m) C-C (MORE THAN 45MPH (70 km/h))

**MEDIANS OVER 4' (1.2 m) WIDE**

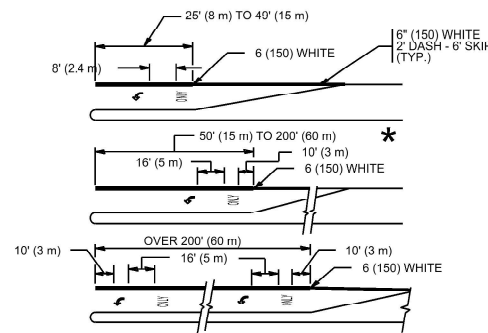


A MINIMUM OF TWO PAIRS OF TURN ARROWS SHALL BE USED. WHITE IN COLOR. ADDITIONAL PAIRS SHALL BE PLACED AT 200' (60 m) TO 300' (90 m) INTERVALS.



**MEDIAN WITH TWO-WAY LEFT TURN LANE**

**TYPICAL PAINTED MEDIAN MARKING**

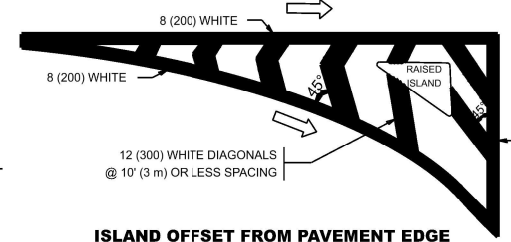


FULL SIZE LETTERS 8' (2.4 m) AND ARROWS SHALL BE USED. AREA = 15.6 SQ. FT. (1.5 m<sup>2</sup>) ONLY AREA = 20.8 SQ. FT. (1.9 m<sup>2</sup>)

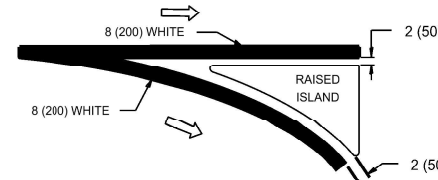
\* TURN LANES IN EXCESS OF 400' (120 m) IN LENGTH MAY HAVE AN ADDITIONAL SET OF ARROW - "ONLY" INSTALLED MIDWAY BETWEEN THE OTHER TWO SETS OF ARROW - "ONLY".

**TYPICAL LEFT (OR RIGHT) TURN LANE**

**TYPICAL TURN LANE MARKING**

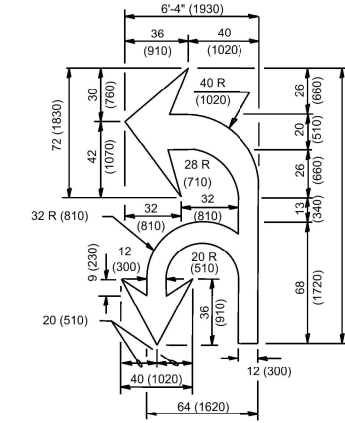


**ISLAND OFFSET FROM PAVEMENT EDGE**

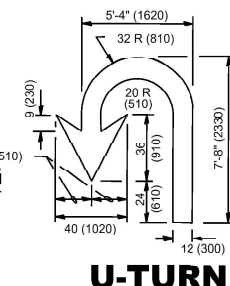


**ISLAND AT PAVEMENT EDGE**

**TYPICAL ISLAND MARKING**



**COMBINATION LEFT AND U-TURN**



**U-TURN**

D(FT)	SPEED LIMIT
345	30
425	35
500	40
580	45
665	50
750	55

**LANE REDUCTION TRANSITION**

\* LANE REDUCTION ARROWS REQUIRED AT SPEEDS OF 45 MPH OR GREATER OR WHEN SPECIFIED IN PLANS.

TYPE OF MARKING	WIDTH OF LINE	PATTERN	COLOR	SPACING / REMARKS
CENTERLINE ON 2 LANE PAVEMENT	4 (100)	SKIP-DASH	YELLOW	10' (3 m) LINE WITH 30' (9 m) SPACE
CENTERLINE ON MULTI-LANE UNDIVIDED PAVEMENT	2 @ 4 (100)	SOLID	YELLOW	11 (280) C-C
NO PASSING ZONE LINES: FOR ONE DIRECTION FOR BOTH DIRECTIONS	4 (100) 2 @ 4 (100)	SOLID SOLID	YELLOW YELLOW	5 1/2 (140) C-C FROM SKIP-DASH CENTERLINE 11 (280) C-C OMIT SKIP-DASH CENTERLINE BETWEEN
LANE LINES	4 (100) 5 (125) ON FREEWAYS	SKIP-DASH SKIP-DASH	WHITE WHITE	10' (3 m) LINE WITH 30' (9 m) SPACE
DOTTED LINES (EXTENSIONS OF CENTER, LANE OR TURN LANE MARKINGS)	SAME AS LINE BEING EXTENDED	SKIP-DASH	SAME AS LINE BEING EXTENDED	2' (600) LINE WITH 6' (1.8 m) SPACE
EDGE LINES	4 (100)	SOLID	YELLOW-LEFT WHITE-RIGHT	OUTLINE MEDIANS IN YELLOW
TURN LANE MARKINGS	6 (150) LINE: FULL SIZE LETTERS & SYMBOLS (8' (2.4m))	SOLID	WHITE	SEE TYPICAL TURN LANE MARKING DETAIL
TWO WAY LEFT TURN MARKING	2 @ 4 (100) EACH DIRECTION 8' (2.4m) LEFT ARROW	SKIP-DASH AND SOLID IN PAIRS	YELLOW WHITE	10' (3 m) LINE WITH 30' (9 m) SPACE FOR SKIP-DASH; 5 1/2 (140) C-C BETWEEN SOLID LINE AND SKIP-DASH LINE SEE TYPICAL TWO-WAY LEFT TURN MARKING DETAIL
CROSSWALK LINES (PEDESTRIAN) A. DIAGONALS (BIKE & EQUESTRIAN) B. LONGITUDINAL BARS (SCHOOL)	2 @ 6 (150) 12 (300) @ 45° 12 (300) @ 90°	SOLID SOLID SOLID	WHITE WHITE WHITE	NOT LESS THAN 6' (1.8 m) APART 2' (600) APART 2' (600) APART SEE TYPICAL CROSSWALK MARKING DETAILS.
STOP LINES	24 (600)	SOLID	WHITE	PLACE 4' (1.2 m) IN ADVANCE OF AND PARALLEL TO CROSSWALK, IF PRESENT. OTHERWISE, PLACE AT DESIRED STOPPING POINT. PARALLEL TO CROSSROAD CENTERLINE, WHERE POSSIBLE.
PAINTED MEDIANS	2 @ 4 (100) WITH 12 (300) DIAGONALS @ 45° NO DIAGONALS USED FOR 4' (1.2 m) WIDE MEDIANS	SOLID	YELLOW; TWO WAY TRAFFIC WHITE; ONE WAY TRAFFIC	11 (280) C-C FOR THE DOUBLE LINE SEE TYPICAL PAINTED MEDIAN MARKING.
GORE MARKING AND CHANNELIZING LINES	8 (200) WITH 12 (300) DIAGONALS @ 45°	SOLID	WHITE	DIAGONALS: 15' (4.5 m) C-C (LESS THAN 30MPH (50 km/h)) 20' (6 m) C-C (30MPH (50 km/h) TO 45MPH (70 km/h)) 30' (9 m) C-C (OVER 45MPH (70 km/h))
RAILROAD CROSSING	24 (600) TRANSVERSE LINES: "RR" IS 6' (1.8 m) LETTERS: 15 (400) LINE FOR "X"	SOLID	WHITE	SEE STATE STANDARD 780001 AREA OF: "R"=3.6 SQ. FT. (0.33 m <sup>2</sup> ) EACH "X"=54.0 SQ. FT. (5.0 m <sup>2</sup> )
SHOULDER DIAGONALS (REQUIRED FOR SHOULDERS ≥ 8')	12 (300) @ 45°	SOLID	WHITE - RIGHT YELLOW - LEFT	50' (15 m) C-C (LESS THAN 30MPH (50 km/h)) 75' (26 m) C C (30 MPH (50 km/h) TO 45MPH (70 km/h)) 150' (45 m) C-C (OVER 45MPH (70 km/h))
U TURN ARROW	SEE DETAIL	SOLID	WHITE	16.3 SF
2 ARROW COMBINATION LEFT AND U TURN	SEE DETAIL	SOLID	WHITE	30.4 SF

FOR FURTHER DETAILS ON PAVEMENT MARKING REFER TO STANDARD SPECIFICATIONS FOR ROAD AND BRIDGE CONSTRUCTION AND STATE STANDARD 780001.

All dimensions are in inches (millimeters) unless otherwise shown.

USER NAME = eric.l.torres	DESIGNED - EVERS	REVISED - C. JUCIUS 09-09-09
PLOT SCALE = \$SCALES	CHECKED -	REVISED - C. JUCIUS 07-01-13
PLOT DATE = 8/30/2023	DATE - 03-19-90	REVISED - C. JUCIUS 12-21-15
		REVISED - C. JUCIUS 04-12-16

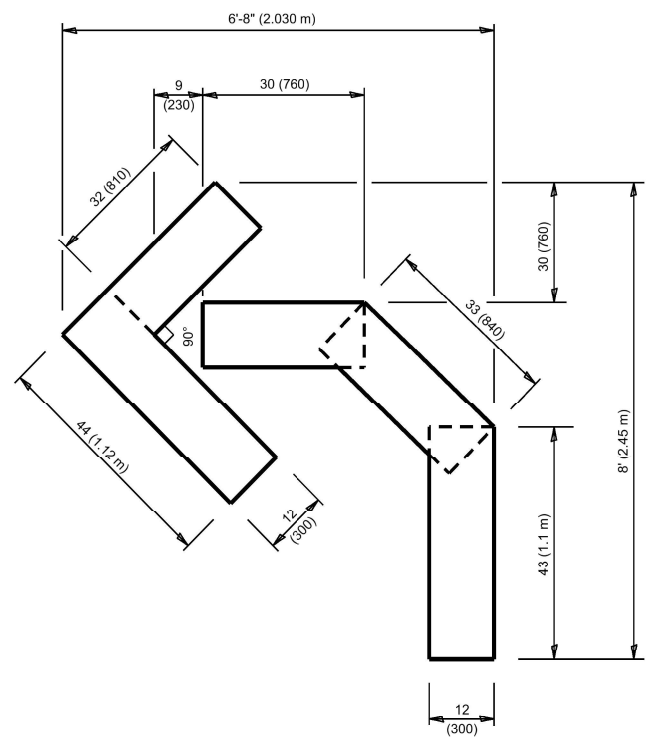
**STATE OF ILLINOIS DEPARTMENT OF TRANSPORTATION**

**DISTRICT ONE TYPICAL PAVEMENT MARKINGS**

SCALE: NONE	SHEET 1 OF 1 SHEETS	STA. TO STA.
-------------	---------------------	--------------

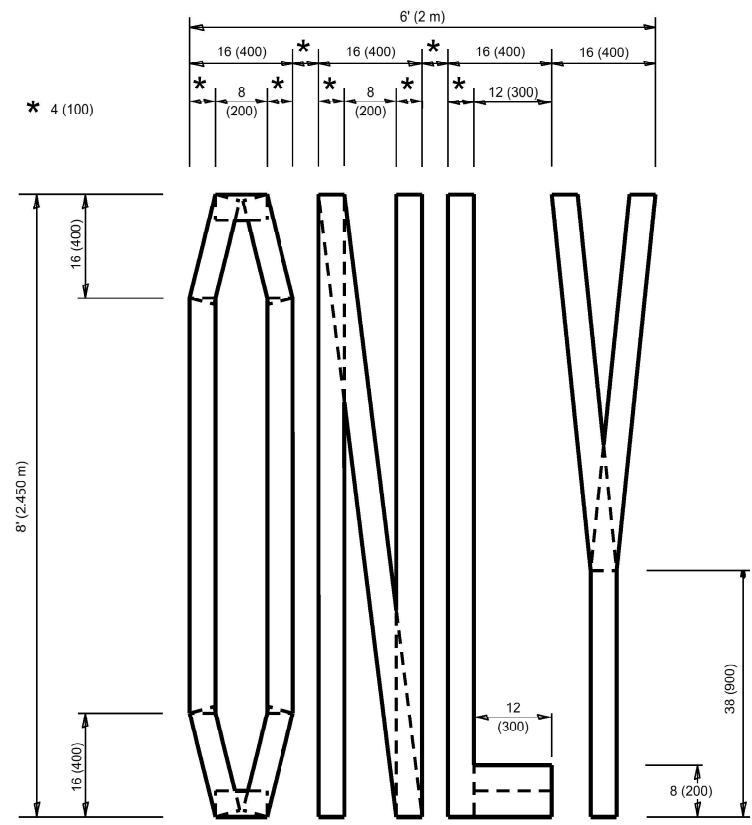
C.H.	SECTION	COUNTY	TOTAL SHEETS	SHEET NO.
92	CH 0092 23 OVERLAY	COOK	20	18
<b>TC-13</b>		CONTRACT NO. 62U81		
ILLINOIS FED. AID PROJECT				

MODEL: Plan Symbols (Sheet)  
 FILE NAME: Z:\DOT\CAD\_ORB\Folder Master\Master Files\DOT\CAD\_CONNECT\Configuration\Organization-Civil\DOT\_Standards\Drawings\Sheet Symbols.dwg



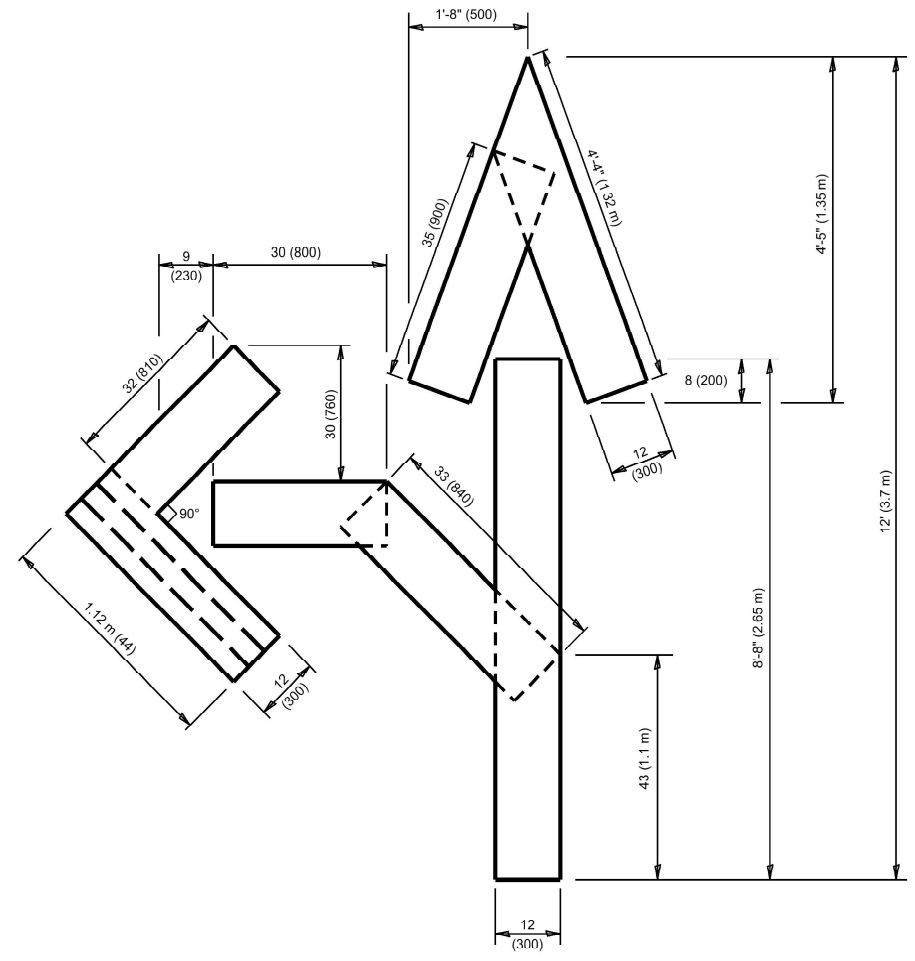
**QUANTITY**

4 (100) LINE = 45.5 ft. (13.9 m)  
 15.2 sq. ft. (1.41 sq. m)



**QUANTITY**

4 (100) LINE = 64.1 ft. (19.5 m)  
 21.4 sq. ft. (1.99 sq. m)

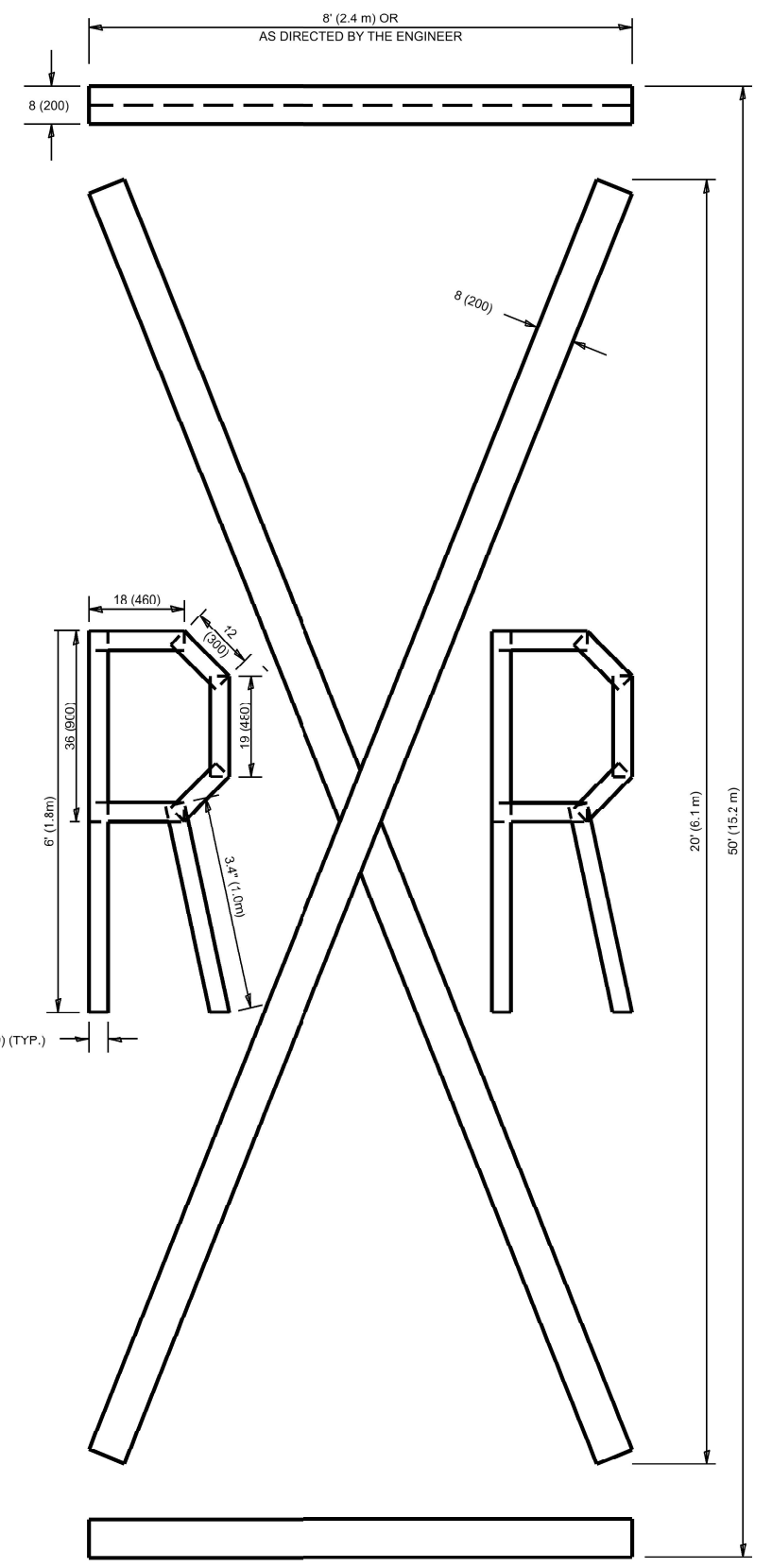


**QUANTITY**

1 (100) LINE = 82.5 ft. (25.1 m)  
 27.5 sq. ft. (2.53 sq. m)

**NOTE:**

ALL QUANTITIES OF PLACEMENT ARE REPRESENTED IN LINEAR FEET OF 4" LINES TO MATCH THE 4" TEMPORARY TAPE PAY ITEM AND REPRESENTS THE TOTAL QUANTITY OF 4" TAPE REQUIRED.



**QUANTITY**

4 (100) LINE = 225.9 ft. (68.9 m)  
 75.3 sq. ft. (6.99 sq. m)

All dimensions are in inches (millimeters) unless otherwise shown.

USER NAME = eric.l.torres	DESIGNED -	REVISED - T. RAMMACHER 03-02-98
PLOT SCALE = \$SCALES	DRAWN -	REVISED - E. GOMEZ 08-28-00
PLOT DATE = 8/30/2023	CHECKED -	REVISED - E. GOMEZ 08-28-00
	DATE - 09-18-94	REVISED - A. SCHUETZE 09-15-16

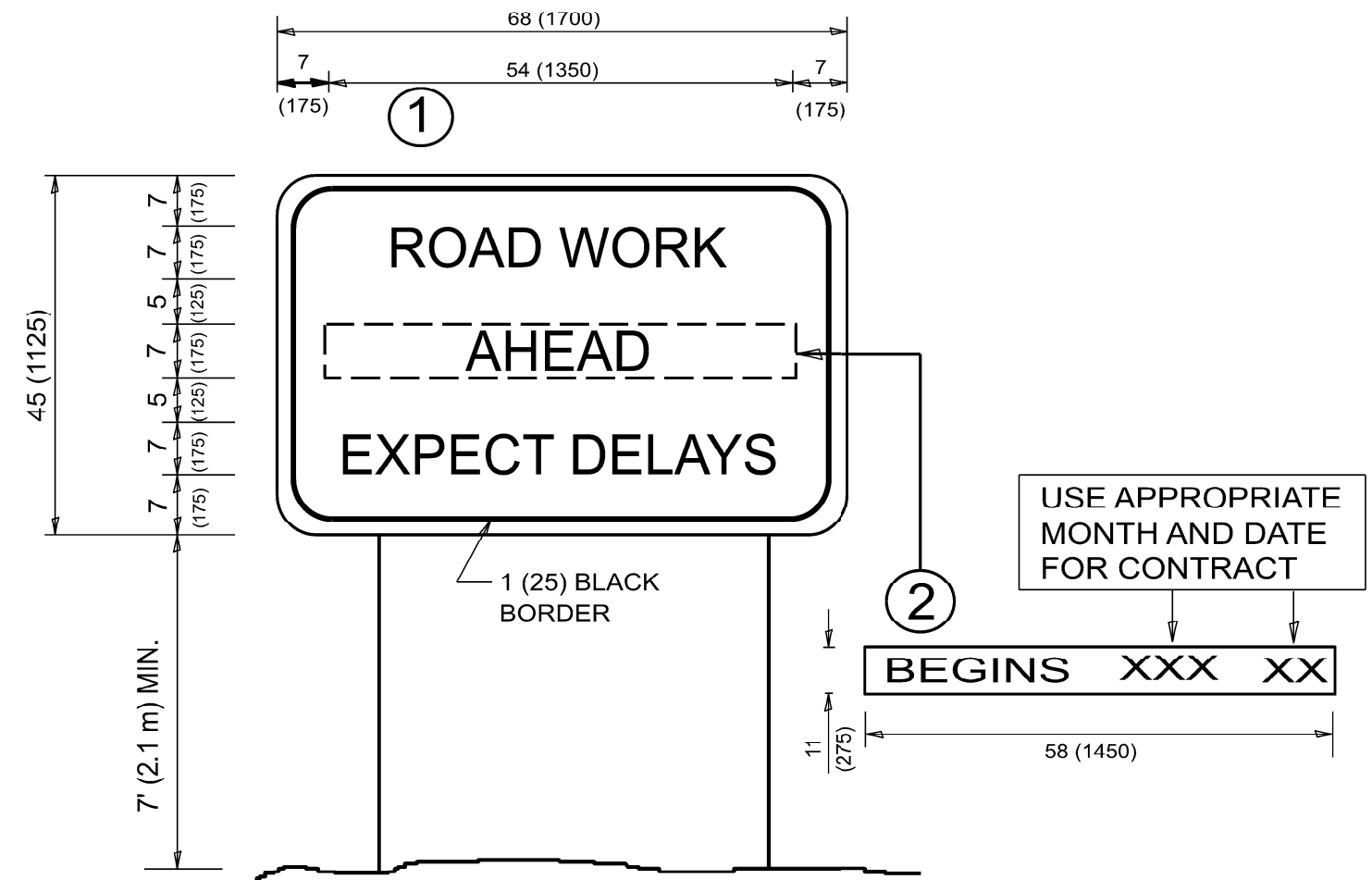
**STATE OF ILLINOIS  
 DEPARTMENT OF TRANSPORTATION**

**SHORT TERM PAVEMENT MARKING LETTERS AND SYMBOLS**

SCALE: NONE SHEET 1 OF 1 SHEETS STA. TO STA.

C.H.	SECTION	COUNTY	TOTAL SHEETS	SHEET NO.
92	CH 0092 23 OVERLAY	COOK	20	19
<b>TC-16</b>			CONTRACT NO. 02U01	
ILLINOIS FED. AID PROJECT				

MODEL: Plan Sign (Sheet)  
 FILE NAME: Z:\DOT\CAD\_ORB\Folder Master Files\DOT\CAD\_CONFIGURATION\Organization-Civil\DOT\_Standards\Drawings\Sheet Seals\Civil\_Named\_Boundary\_SheetSeals.dgn



**NOTES:**

1. USE BLACK LETTERING ON ORANGE BACKGROUND.
2. ERECT SIGNS IN ADVANCE OF THE LOCATION FOR THE "ROAD CONSTRUCTION AHEAD" SIGN AT LOCATIONS AS DIRECTED BY THE ENGINEER.
3. ERECT SIGN ① WITH INSTALLED PANEL ② ONE WEEK PRIOR TO THE START OF CONSTRUCTION.
4. REMOVE PANEL ② SOON AFTER THE START OF CONSTRUCTION.
5. SEE SPECIAL PROVISION FOR "TEMPORARY INFORMATION SIGNING" FOR ADDITIONAL INFORMATION.
6. ONE SIGN ASSEMBLY EQUALS 25.70 SQ. FT. (2.3 SQ. M.)
7. SHALL BE PAID FOR AS TEMPORARY INFORMATION SIGNING.

62U81

ALL DIMENSIONS ARE IN INCHES (MILLIMETERS)  
 UNLESS OTHERWISE SHOWN.

USER NAME = eric.l.torres	DESIGNED -	REVISED - R. MIRS 09-15-97
PLOT SCALE = \$SCALE\$	DRAWN -	REVISED - R. MIRS 12-11-97
PLOT DATE = 8/30/2023	CHECKED -	REVISED - T. RAMMACHER 02-02-99
	DATE -	REVISED - C. JUCIUS 01-31-07

**STATE OF ILLINOIS  
 DEPARTMENT OF TRANSPORTATION**

**ARTERIAL ROAD  
 INFORMATION SIGN**

SCALE: NONE SHEET 1 OF 1 SHEETS STA. TO STA.

SECTION	COUNTY	TOTAL SHEETS	SHEET NO.
CH 0092 23 OVERLAY	COOK	20	20
<b>TC-22</b>		CONTRACT NO. 62U81	
ILLINOIS FED. AID PROJECT			