

INDEX OF SHEETS

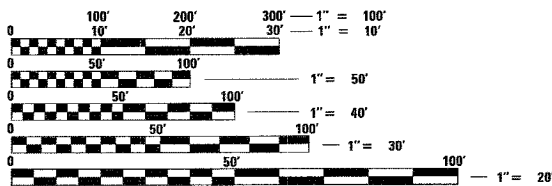
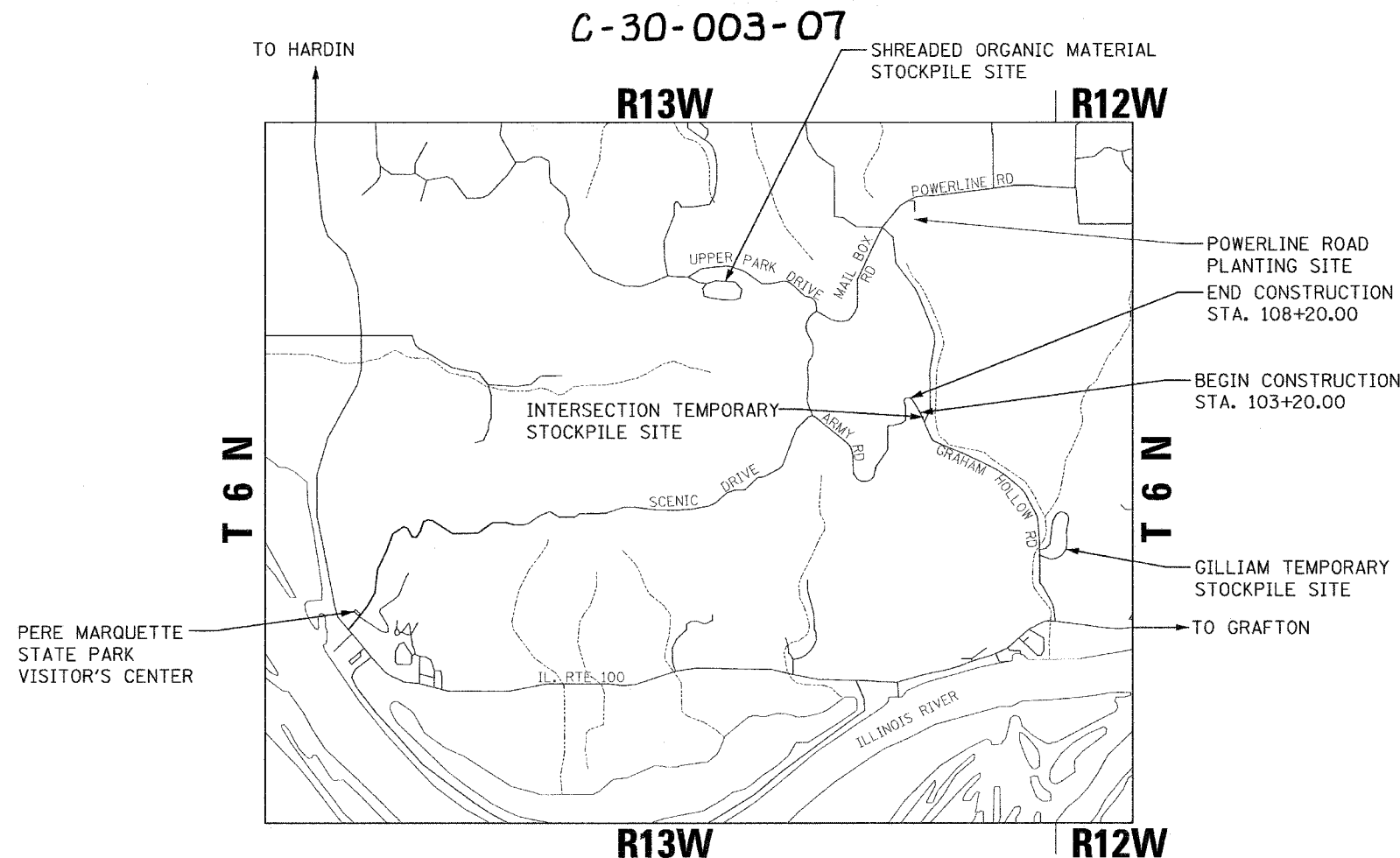
1. COVER SHEET
2. SUMMARY OF QUANTITIES, SCHEDULES & TRAFFIC CONTROL PLAN
3. GENERAL NOTES AND DETAILS
4. TYPICAL SECTIONS
5. PLAN & PROFILE SHEET WITH CONTROL TIES
6. STORM WATER POLLUTION PREVENTION PLAN (SWPPP)
7. EROSION CONTROL PLAN
- 8.-14. CROSS SECTIONS AND CULVERT PROFILES

STATE STANDARDS

- | | |
|-----------|--|
| 280001-03 | TEMPORARY EROSION CONTROL SYSTEMS |
| 542301-01 | PRECAST REINFORCED CONCRETE FLARED END SECTION |
| 601101 | CONCRETE HEADWALL FOR PIPE DRAIN |
| 602401-01 | MANHOLE - TYPE A |
| 602701-01 | MANHOLE STEPS |
| 604101 | MEDIAN INLET FOR 600MM (24") REINFORCED CONCRETE PIPE |
| 630301-04 | SHOULDER WIDENING FOR TYPE 1 (SPECIAL) GUARDRAIL TERMINALS |
| 702001-06 | TRAFFIC CONTROL DEVICES |
| 780001-01 | TYPICAL PAVEMENT MARKINGS |

STATE OF ILLINOIS
DEPARTMENT OF TRANSPORTATION
DIVISION OF HIGHWAYS
IDNR /IHPA STATEWIDE
PERE MARQUETTE STATE PARK

ARMY ROAD IMPROVEMENTS
JERSEY COUNTY
JOB NO. P-30-002-07



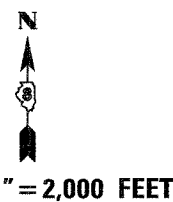
FULL SIZE PLANS HAVE BEEN PREPARED USING STANDARD ENGINEERING SCALES. REDUCED SIZED PLANS WILL NOT CONFORM TO STANDARD SCALES. IN MAKING MEASUREMENTS ON REDUCED PLANS, THE ABOVE SCALES MAY BE USED.

J.U.L.I.E.
 JOINT UTILITY LOCATION INFORMATION FOR EXCAVATION
 CALL 1-800-892-0123

CONTRACT NO. 44925

LOCATION MAP

GROSS LENGTH = 500.00' = 0.09 MILES
 NET LENGTH = 500.00' = 0.09 MILES



McDonough-Whitlow, P.C.
 Consulting Engineers & Land Surveyors
 138 East Wood Street
 Hillsboro, IL 62049
 Phone: 217.532.9233
 Fax: 217.532.6300
PROFESSIONAL DESIGN NO. 194-00104

STATE OF ILLINOIS
DEPARTMENT OF TRANSPORTATION
DIVISION OF HIGHWAYS

SUBMITTED March 1, 20 07
Eric E. Harms
 DEPUTY DIRECTOR OF HIGHWAYS,

March 23, 20 07
Eric E. Harms
 INTERIM ENGINEER OF DESIGN AND ENVIRONMENT

March 23, 20 07
Milton R. Sees, P.E.
 DIRECTOR OF HIGHWAYS, CHIEF ENGINEER



Toni M. McDonough 1/17/07
 Toni M. McDonough, McDonough-Whitlow, P.C. Date
 Licensed Professional Engineer
 State of Illinois No. 62-40559
 License Expires 11/30/07

PRINTED BY THE AUTHORITY
OF THE STATE OF ILLINOIS

DISTRICT PROJECT ENGINEER - LANCE KIDD