

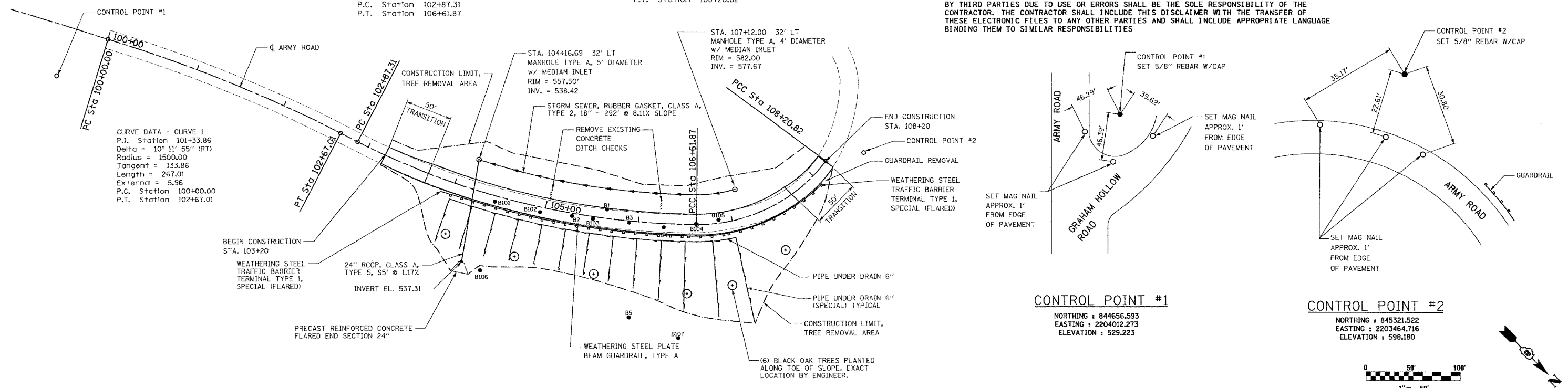
F.A. RTE.	SECTION	COUNTY	TOTAL SHEETS	SHEET NO.
		JERSEY	14	5
STA. 103+20		TO STA. 108+20		
CONTRACT NO. 44925				

NOTE:
 1. MICROSTATION FILES OF THIS PROJECT WILL BE MADE AVAILABLE TO THE CONTRACTOR, IF THERE IS A CONFLICT BETWEEN THE ELECTRONIC FILES AND THE PRINTED CONTRACT PLANS AND DOCUMENTS. THE PRINTED CONTRACT PLANS AND DOCUMENTS SHALL TAKE PRECEDENCE OVER THE ELECTRONIC FILES. THE CONTRACTOR SHALL ACCEPT ALL RISK ASSOCIATED WITH USING THE ELECTRONIC FILES AND SHALL HOLD THE DEPARTMENT HARMLESS FOR ANY ERRORS OR OMISSIONS IN THE ELECTRONIC FILES AND THE DATA CONTAINED THEREIN. ERRORS OR DELAYS RESULTING FROM THE USE OF THE ELECTRONIC FILES BY THE CONTRACTOR SHALL NOT RESULT IN AN EXTENSION OF TIME FOR ANY INTERIM OR FINAL COMPLETION DATE OR SHALL NOT BE CONSIDERED CAUSE FOR ADDITIONAL COMPENSATION. THE CONTRACTOR SHALL NOT USE, SHARE, OR DISTRIBUTE THESE ELECTRONIC FILES EXCEPT FOR THE PURPOSE OF CONSTRUCTION OF THIS CONTRACT. ANY CLAIMS BY THIRD PARTIES DUE TO USE OR ERRORS SHALL BE THE SOLE RESPONSIBILITY OF THE CONTRACTOR. THE CONTRACTOR SHALL INCLUDE THIS DISCLAIMER WITH THE TRANSFER OF THESE ELECTRONIC FILES TO ANY OTHER PARTIES AND SHALL INCLUDE APPROPRIATE LANGUAGE BINDING THEM TO SIMILAR RESPONSIBILITIES

CURVE DATA - CURVE 1
 P.I. Station 101+33.86
 Delta = 10° 11' 55" (RT)
 Radius = 1500.00
 Length = 267.01
 External = 5.96
 P.C. Station 100+00.00
 P.T. Station 102+67.01

CURVE DATA - CURVE 2
 P.I. Station 104+78.09
 Delta = 26° 49' 33" (LT)
 Radius = 800.00
 Length = 374.56
 External = 22.43
 e = 2.20%
 P.C. Station 102+87.31
 P.T. Station 106+61.87

CURVE DATA - CURVE 3
 P.I. Station 107+47.69
 Delta = 53° 34' 17" (LT)
 Radius = 170.00
 Length = 133.86
 External = 158.95
 e = 3.80%
 P.C. Station 106+61.87
 P.T. Station 108+20.82



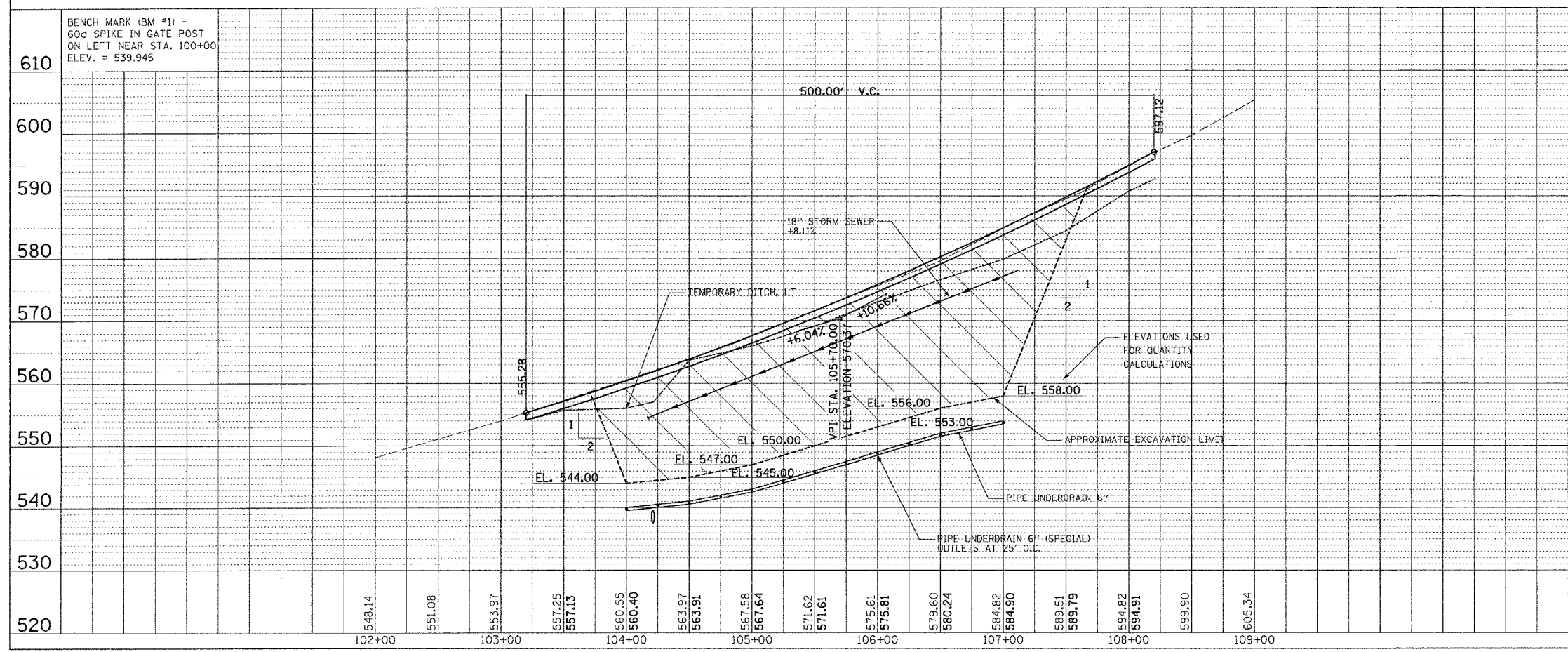
CONTROL POINT #1
 NORTHING : 844656.593
 EASTING : 2204012.273
 ELEVATION : 529.223

CONTROL POINT #2
 NORTHING : 845321.522
 EASTING : 2203464.716
 ELEVATION : 598.180



PLAN	REVISIONS	DATE
BY		
DATE		
NO.		

PROFILE	REVISIONS	DATE
BY		
DATE		
NO.		



EARTH EXCAVATION (C=)	(EXCAVATE AND STORE, 25% SHRINKAGE)	15620 CU YD. (PAY ITEM)
ROCK EXCAVATION (R=)	(WASTE)	1327 CU YD. (PAY ITEM)
EMBANKMENT (F=)		17860 CU YD. (NOT MEASURED)
STONE RIPRAP, CLASS B3 (SPECIAL)		(-)1307 CU YD.* (PAY ITEM)
POROUS GRANULAR EMBANKMENT, SPECIAL		(-)1086 CU YD.* (PAY ITEM)
SUB-BASE GRANULAR MATERIAL, TYPE B		(-)1067 CU YD.* (PAY ITEM)
EARTH EXCAVATION (RETURN MATERIAL, 75%)		(-)11715 CU YD. (PAY ITEM)
TOP SOIL FURNISH AND PLACE 6"		(-)555 CU YD. (PAY ITEM)
FURNISHED EXCAVATION		2130 CU YD. (PAY ITEM)

*SEE SHEET 3 FOR CONVERSION FACTORS USED

REVISIONS	DATE

ILLINOIS DEPARTMENT OF TRANSPORTATION
PLAN & PROFILE SHEET WITH CONTROL TIES
 IDNR / IHPA STATEWIDE ARMY ROAD IMPROVEMENTS
 PERE MARQUETTE STATE PARK

SCALE: NONE
 DATE: 1-16-07
 DRAWN BY: EJR
 CHECKED BY: KCM