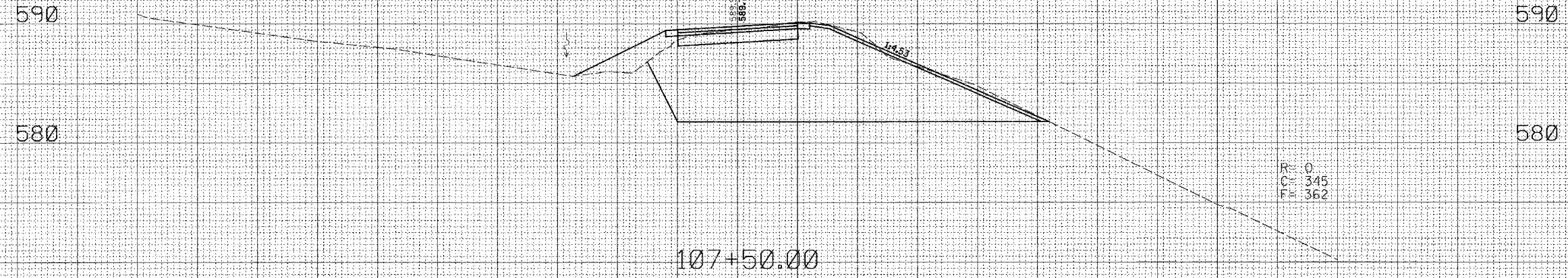
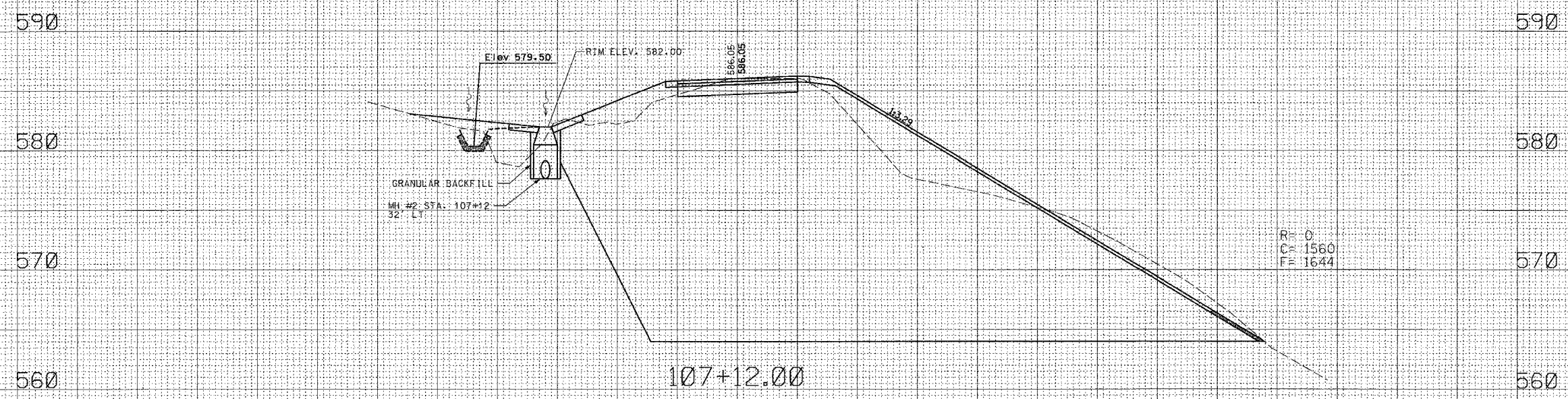


F.A. RTE.	SECTION	COUNTY	TOTAL SHEETS	SHEET NO.
		JERSEY	14	13
STA. 107+12		TO STA. 107+50		
FED. ROAD DIST. NO.		ILLINOIS FED. AID PROJECT		
CONTRACT NO. 44926				



NOTE: ADJUST SLOPES ON STD. 604101 TO MATCH GRADE AND SIDE SLOPES.



DISTRICT PROJECT ENGINEER - LANCE KIDD

