

INDEX OF SHEETS

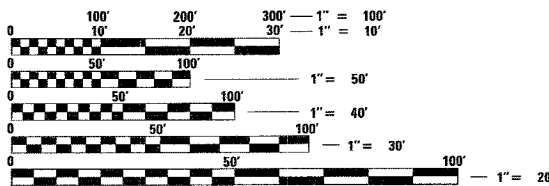
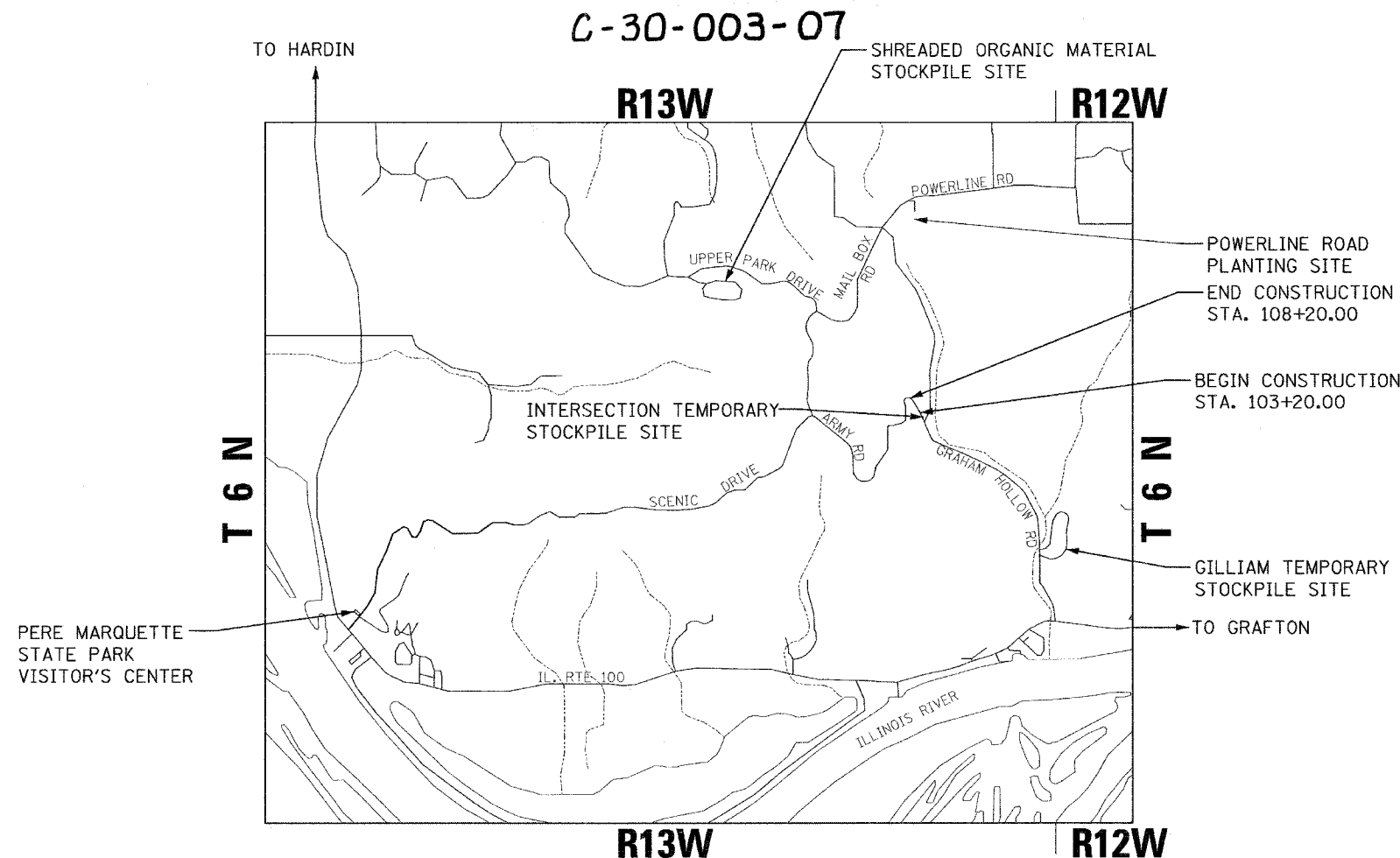
1. COVER SHEET
2. SUMMARY OF QUANTITIES, SCHEDULES & TRAFFIC CONTROL PLAN
3. GENERAL NOTES AND DETAILS
4. TYPICAL SECTIONS
5. PLAN & PROFILE SHEET WITH CONTROL TIES
6. STORM WATER POLLUTION PREVENTION PLAN (SWPPP)
7. EROSION CONTROL PLAN
- 8.-14. CROSS SECTIONS AND CULVERT PROFILES

STATE STANDARDS

- | | |
|-----------|--|
| 280001-03 | TEMPORARY EROSION CONTROL SYSTEMS |
| 542301-01 | PRECAST REINFORCED CONCRETE FLARED END SECTION |
| 601101 | CONCRETE HEADWALL FOR PIPE DRAIN |
| 602401-01 | MANHOLE - TYPE A |
| 602701-01 | MANHOLE STEPS |
| 604101 | MEDIAN INLET FOR 600MM (24") REINFORCED CONCRETE PIPE |
| 630301-04 | SHOULDER WIDENING FOR TYPE 1 (SPECIAL) GUARDRAIL TERMINALS |
| 702001-06 | TRAFFIC CONTROL DEVICES |
| 780001-01 | TYPICAL PAVEMENT MARKINGS |

STATE OF ILLINOIS
DEPARTMENT OF TRANSPORTATION
DIVISION OF HIGHWAYS
IDNR /IHPA STATEWIDE
PERE MARQUETTE STATE PARK

ARMY ROAD IMPROVEMENTS
JERSEY COUNTY
JOB NO. P-30-002-07



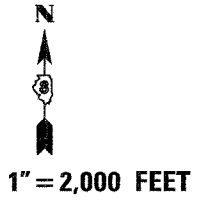
FULL SIZE PLANS HAVE BEEN PREPARED USING STANDARD ENGINEERING SCALES. REDUCED SIZED PLANS WILL NOT CONFORM TO STANDARD SCALES. IN MAKING MEASUREMENTS ON REDUCED PLANS, THE ABOVE SCALES MAY BE USED.

J.U.L.I.E.
 JOINT UTILITY LOCATION INFORMATION FOR EXCAVATION
 CALL 1-800-892-0123

CONTRACT NO. 44925

LOCATION MAP

GROSS LENGTH = 500.00' = 0.09 MILES
 NET LENGTH = 500.00' = 0.09 MILES



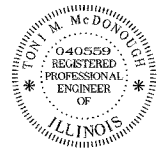
McDonough-Whitlow, P.C.
 Consulting Engineers & Land Surveyors
 138 East Wood Street
 Hillsboro, IL 62049
 Phone: 217.532.9233
 Fax: 217.532.6300
PROFESSIONAL DESIGN NO. 144-0014

STATE OF ILLINOIS
DEPARTMENT OF TRANSPORTATION
DIVISION OF HIGHWAYS

SUBMITTED March 1, 20 07
Eric E. Harms
 DEPUTY DIRECTOR OF HIGHWAYS,

March 23, 20 07
Eric E. Harms
 INTERIM ENGINEER OF DESIGN AND ENVIRONMENT

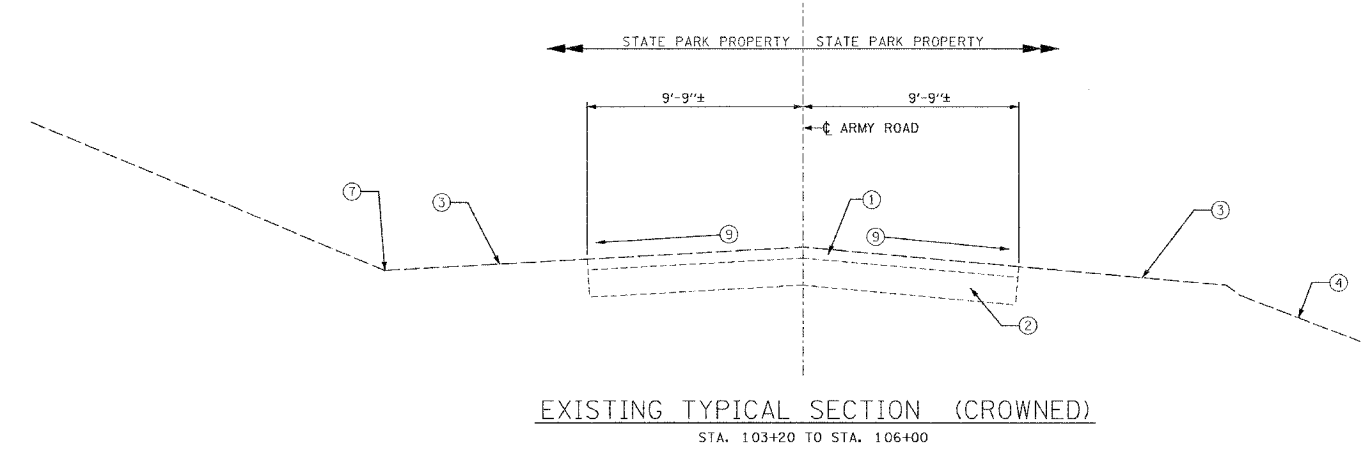
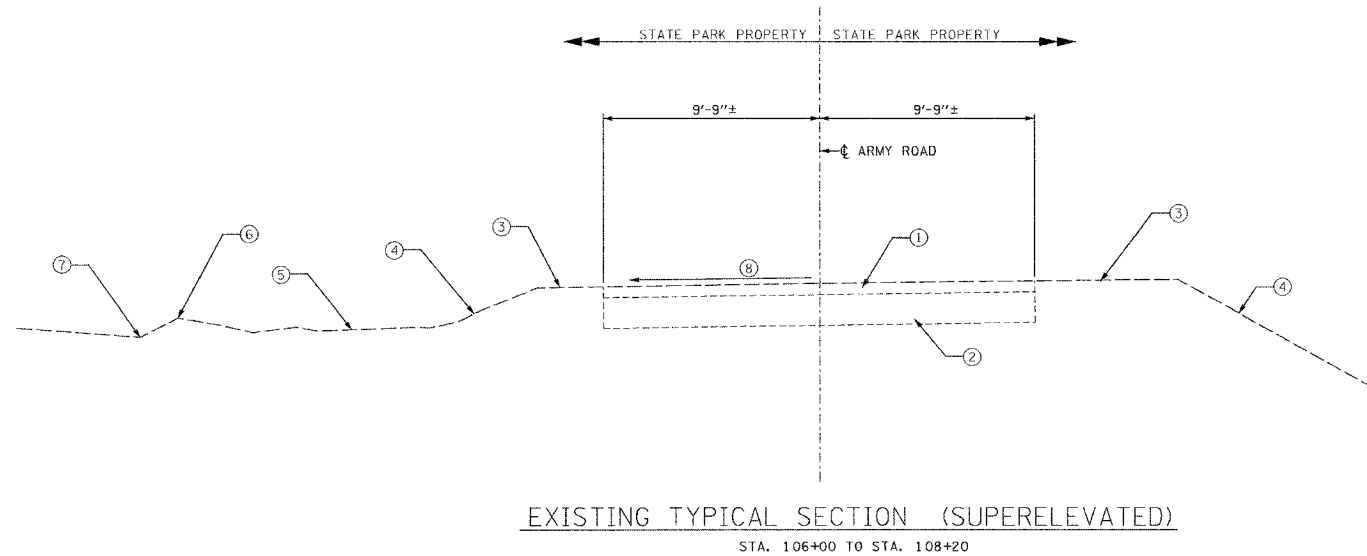
March 23, 20 07
Milton R. Sees, P.E.
 DIRECTOR OF HIGHWAYS, CHIEF ENGINEER



Toni M. McDonough 1/17/07
 Toni M. McDonough, McDonough-Whitlow, P.C. Date
 Licensed Professional Engineer
 State of Illinois No. 62-40559
 License Expires 11/30/07

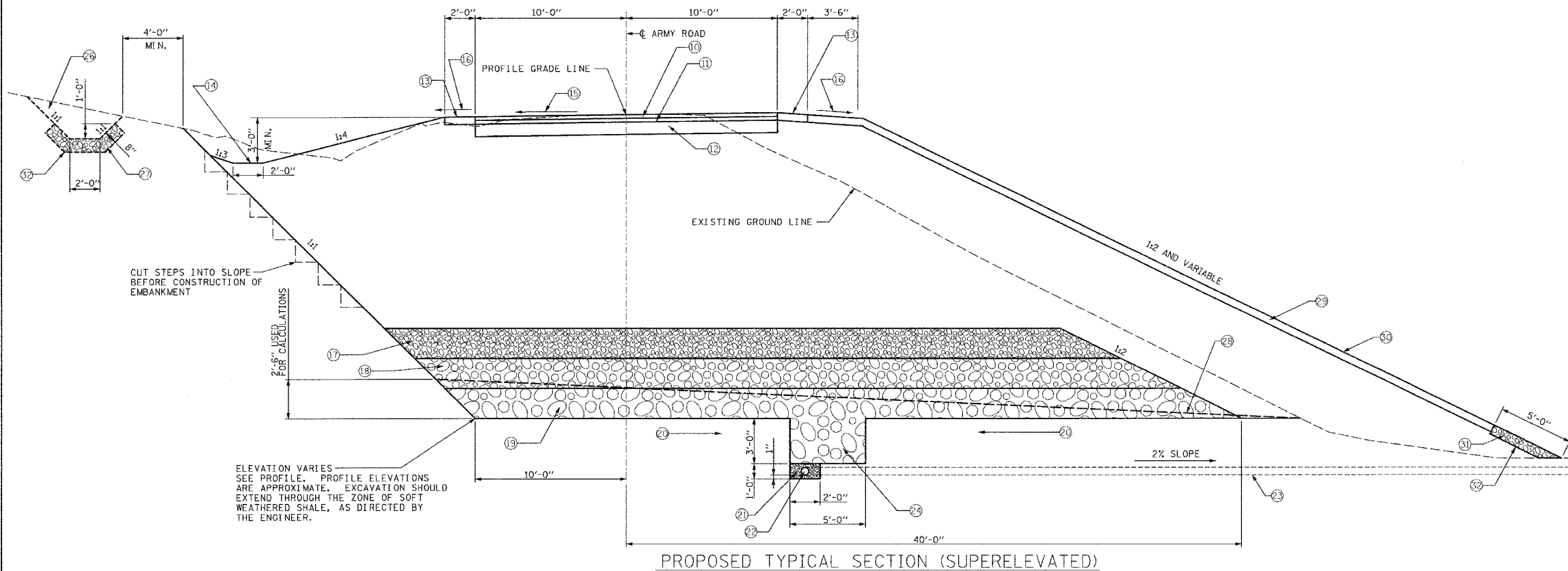
PRINTED BY THE AUTHORITY
OF THE STATE OF ILLINOIS

DISTRICT PROJECT ENGINEER - LANCE KIDD



LEGEND

- ① EXISTING 4" ± BITUMINOUS SURFACE.
- ② EXISTING 6" TO 11" ± AGGREGATE BASE
- ③ EXISTING TURF/AGGREGATE SHOULDER
- ④ SLOPES VARY
- ⑤ FALSE DITCH
- ⑥ BERM
- ⑦ DITCH
- ⑧ S.E. RATE VARIES
- ⑨ CROSS SLOPE VARIES
- ⑩ 1 3/4" HOT-MIX ASPHALT SURFACE COURSE
- ⑪ 2 1/4" HOT-MIX ASPHALT BINDER COURSE
- ⑫ 10" AGGREGATE BASE COURSE, TYPE A
- ⑬ 6" AGGREGATE SHOULDER, TYPE A
- ⑭ DITCH
- ⑮ S.E. RATE VARIES 2.2% TO 3.8%
- ⑯ 6% SLOPE
- ⑰ 24" LAYER OF SUB-BASE GRANULAR MATERIAL, TYPE B, C&G
COMPACT EACH LAYER TO 95% OF THE MAXIMUM DRY UNIT WEIGHT
AS DETERMINED BY THE STANDARD PROCTOR TEST
- ⑱ 24" LAYER OF POROUS GRANULAR EMBANKMENT, SPECIAL
TAMP TO PROVIDE A STABLE BASE
- ⑲ 24" LAYER OF STONE RIPRAP, CLASS B3 (SPECIAL)
- ⑳ 2% SLOPE TO KEYWAY
- ㉑ GRANULAR BACKFILL PER ARTICLE 601.04(G)
- ㉒ PIPE UNDERDRAIN 6" (PERFORATED)
- ㉓ PIPE UNDERDRAIN 6" (SPECIAL) AT 25' O.C.
- ㉔ KEYWAY OF STONE RIPRAP, CLASS B3 (SPECIAL)
- ㉕ CONCRETE HEADWALLS FOR PIPE DRAINS
- ㉖ TEMPORARY DITCH
- ㉗ AGGREGATE DITCH, B3
- ㉘ ASSUMED SURFACE FOR ROCK EXCAVATION, PLAN QUANTITY
BASED ON 1'-3" AVG. THICKNESS PLUS KEYWAY AND PIPE UNDERDRAIN
- ㉙ TOPSOIL FURNISH AND PLACE, 6"
- ㉚ EXCELSIOR BLANKET, SPECIAL
- ㉛ STONE RIPRAP, CLASS B3 (SPECIAL) 8" THICK
- ㉜ FABRIC FILTER



NOTE: ITEMS IN LEGEND ⑰ THROUGH ㉚ OMITTED STA 103+20 TO STA 104+00 AND STA 107+00 TO STA 108+20

REVISIONS	
NAME	DATE

ILLINOIS DEPARTMENT OF TRANSPORTATION
TYPICAL SECTIONS
 IDNR / IHPA STATEWIDE
 ARMY ROAD IMPROVEMENTS
 PERE MARQUETTE
 STATE PARK

SCALE: N.T.S.
 DATE: 1-16-07

DRAWN BY: EJR
 CHECKED BY: KCM

DISTRICT PROJECT ENGINEER - LANCE RIDD

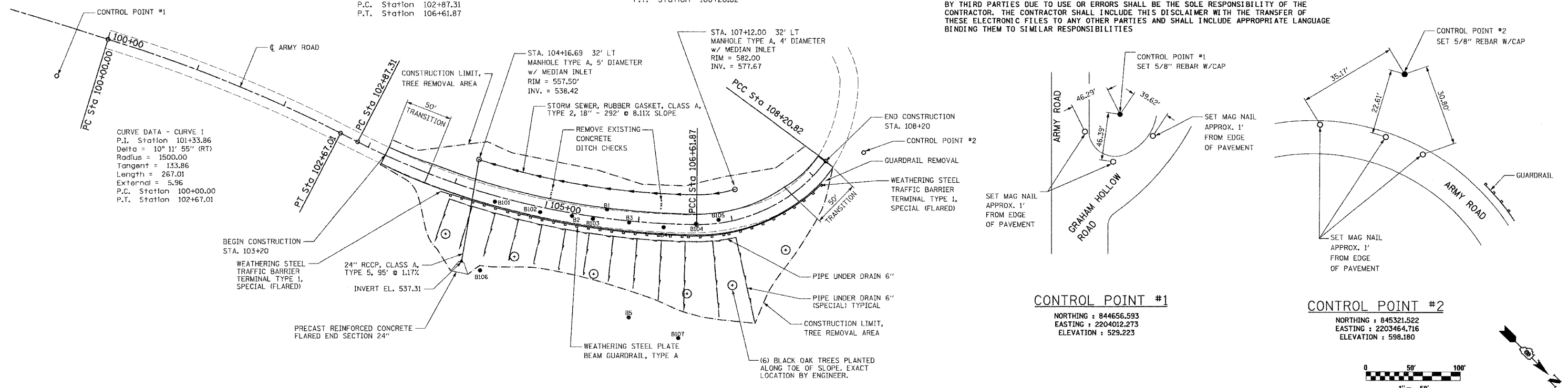
F.A. RTE.	SECTION	COUNTY	TOTAL SHEETS	SHEET NO.
		JERSEY	14	5
STA. 103+20		TO STA. 108+20		
CONTRACT NO. 44925				

NOTE:
 1. MICROSTATION FILES OF THIS PROJECT WILL BE MADE AVAILABLE TO THE CONTRACTOR, IF THERE IS A CONFLICT BETWEEN THE ELECTRONIC FILES AND THE PRINTED CONTRACT PLANS AND DOCUMENTS. THE PRINTED CONTRACT PLANS AND DOCUMENTS SHALL TAKE PRECEDENCE OVER THE ELECTRONIC FILES. THE CONTRACTOR SHALL ACCEPT ALL RISK ASSOCIATED WITH USING THE ELECTRONIC FILES AND SHALL HOLD THE DEPARTMENT HARMLESS FOR ANY ERRORS OR OMISSIONS IN THE ELECTRONIC FILES AND THE DATA CONTAINED THEREIN. ERRORS OR DELAYS RESULTING FROM THE USE OF THE ELECTRONIC FILES BY THE CONTRACTOR SHALL NOT RESULT IN AN EXTENSION OF TIME FOR ANY INTERIM OR FINAL COMPLETION DATE OR SHALL NOT BE CONSIDERED CAUSE FOR ADDITIONAL COMPENSATION. THE CONTRACTOR SHALL NOT USE, SHARE, OR DISTRIBUTE THESE ELECTRONIC FILES EXCEPT FOR THE PURPOSE OF CONSTRUCTION OF THIS CONTRACT. ANY CLAIMS BY THIRD PARTIES DUE TO USE OR ERRORS SHALL BE THE SOLE RESPONSIBILITY OF THE CONTRACTOR. THE CONTRACTOR SHALL INCLUDE THIS DISCLAIMER WITH THE TRANSFER OF THESE ELECTRONIC FILES TO ANY OTHER PARTIES AND SHALL INCLUDE APPROPRIATE LANGUAGE BINDING THEM TO SIMILAR RESPONSIBILITIES

CURVE DATA - CURVE 1
 P.I. Station 101+33.86
 Delta = 10° 11' 55" (RT)
 Radius = 1500.00
 Length = 267.01
 External = 5.96
 P.C. Station 100+00.00
 P.T. Station 102+67.01

CURVE DATA - CURVE 2
 P.I. Station 104+78.09
 Delta = 26° 49' 33" (LT)
 Radius = 800.00
 Length = 374.56
 External = 22.43
 e = 2.20%
 P.C. Station 102+87.31
 P.T. Station 106+61.87

CURVE DATA - CURVE 3
 P.I. Station 107+47.69
 Delta = 53° 34' 17" (LT)
 Radius = 170.00
 Length = 133.86
 External = 158.95
 e = 3.80%
 P.C. Station 106+61.87
 P.T. Station 108+20.82



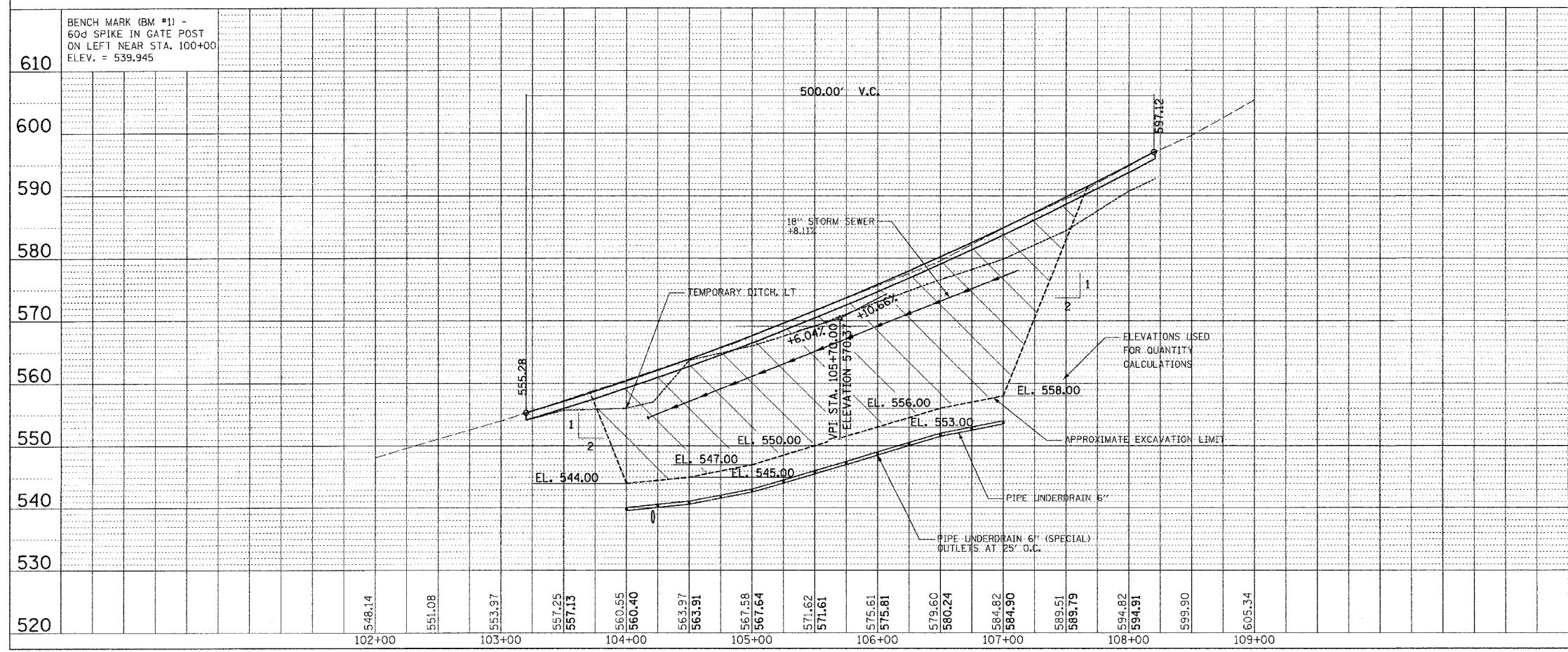
CONTROL POINT #1
 NORTHING : 844656.593
 EASTING : 2204012.273
 ELEVATION : 529.223

CONTROL POINT #2
 NORTHING : 845321.522
 EASTING : 2203464.716
 ELEVATION : 598.180



PLAN	REVISIONS	DATE
BY		
DATE		
NO.		

PROFILE	REVISIONS	DATE
BY		
DATE		
NO.		



EARTH EXCAVATION (C=)	(EXCAVATE AND STORE, 25% SHRINKAGE)	15620 CU YD. (PAY ITEM)
ROCK EXCAVATION (R=)	(WASTE)	1327 CU YD. (PAY ITEM)
EMBANKMENT (F=)		17860 CU YD. (NOT MEASURED)
STONE RIPRAP, CLASS B3 (SPECIAL)		(-)1307 CU YD.* (PAY ITEM)
POROUS GRANULAR EMBANKMENT, SPECIAL		(-)1086 CU YD.* (PAY ITEM)
SUB-BASE GRANULAR MATERIAL, TYPE B		(-)1067 CU YD.* (PAY ITEM)
EARTH EXCAVATION (RETURN MATERIAL, 75%)		(-)11715 CU YD. (PAY ITEM)
TOP SOIL FURNISH AND PLACE 6"		(-)555 CU YD. (PAY ITEM)
FURNISHED EXCAVATION		2130 CU YD. (PAY ITEM)

*SEE SHEET 3 FOR CONVERSION FACTORS USED

REVISIONS	DATE

ILLINOIS DEPARTMENT OF TRANSPORTATION
 PLAN & PROFILE SHEET
 WITH CONTROL TIES
 IDNR / IHPA STATEWIDE
 ARMY ROAD IMPROVEMENTS
 PERE MARQUETTE
 STATE PARK

SCALE: NONE
 DATE: 1-16-07
 DRAWN BY: EJR
 CHECKED BY: KCM

F.A. RTE.	SECTION	COUNTY	TOTAL SHEETS	SHEET NO.
		JERSEY	14	7
STA. 103+20		TO STA. 108+20		

CONTRACT NO. 44925

GENERAL EROSION CONTROL NOTES:

ALL ITEMS SHALL BE CONSTRUCTED AS SHOWN ON THIS SHEET, ON STANDARD 280001, AND AS DIRECTED BY THE ENGINEER.

THE SYMBOLY ON THE STORM WATER POLLUTION PREVENTION PLAN SHEETS DOES NOT REPRESENT THE SIZE OR QUANTITY OF BALES, FOR NUMBER OF BALES REFER TO DETAILS AND NOTES SHOWN ON THIS SHEET AND/OR AS DIRECTED BY THE ENGINEER.

AGGREGATE DITCH CHECKS SHALL REMAIN AS PART OF COMPLETED CONSTRUCTION.

THE CONTRACTOR WILL BE REQUIRED TO SUBMIT CERTIFICATIONS STATEMENT (NPDES ATTACHMENT 6), FULL COMPLIANCE WITH ALL TERMS OF THE NPDES PERMIT MUST BE STRICTLY ADHERED TO.

ALL STRUCTURES NOTED FOR INLET AND PIPE PROTECTION OR AS DIRECTED BY THE ENGINEER ARE TO BE PROVIDED AND MAINTAINED. PAY ITEMS HAVE BEEN INCLUDED IN THE SUMMARY OF QUANTITIES.

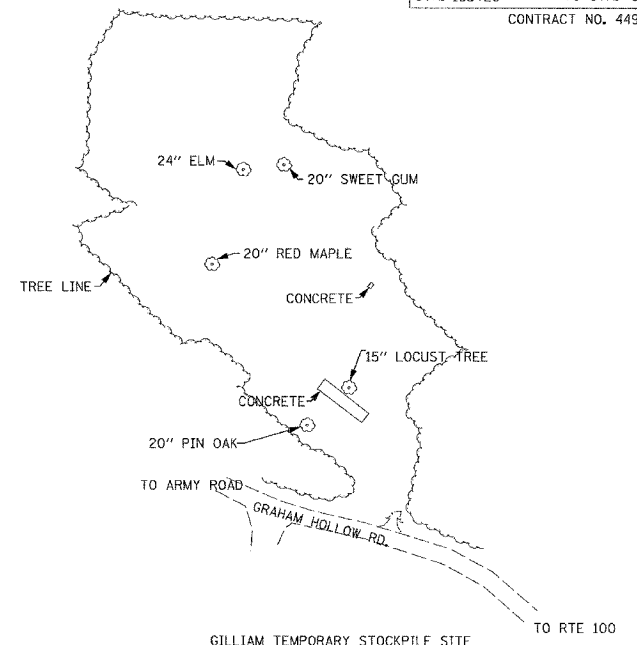
AGGREGATE USED FOR DITCH (TEMPORARY) MAY REMAIN

NOTES:

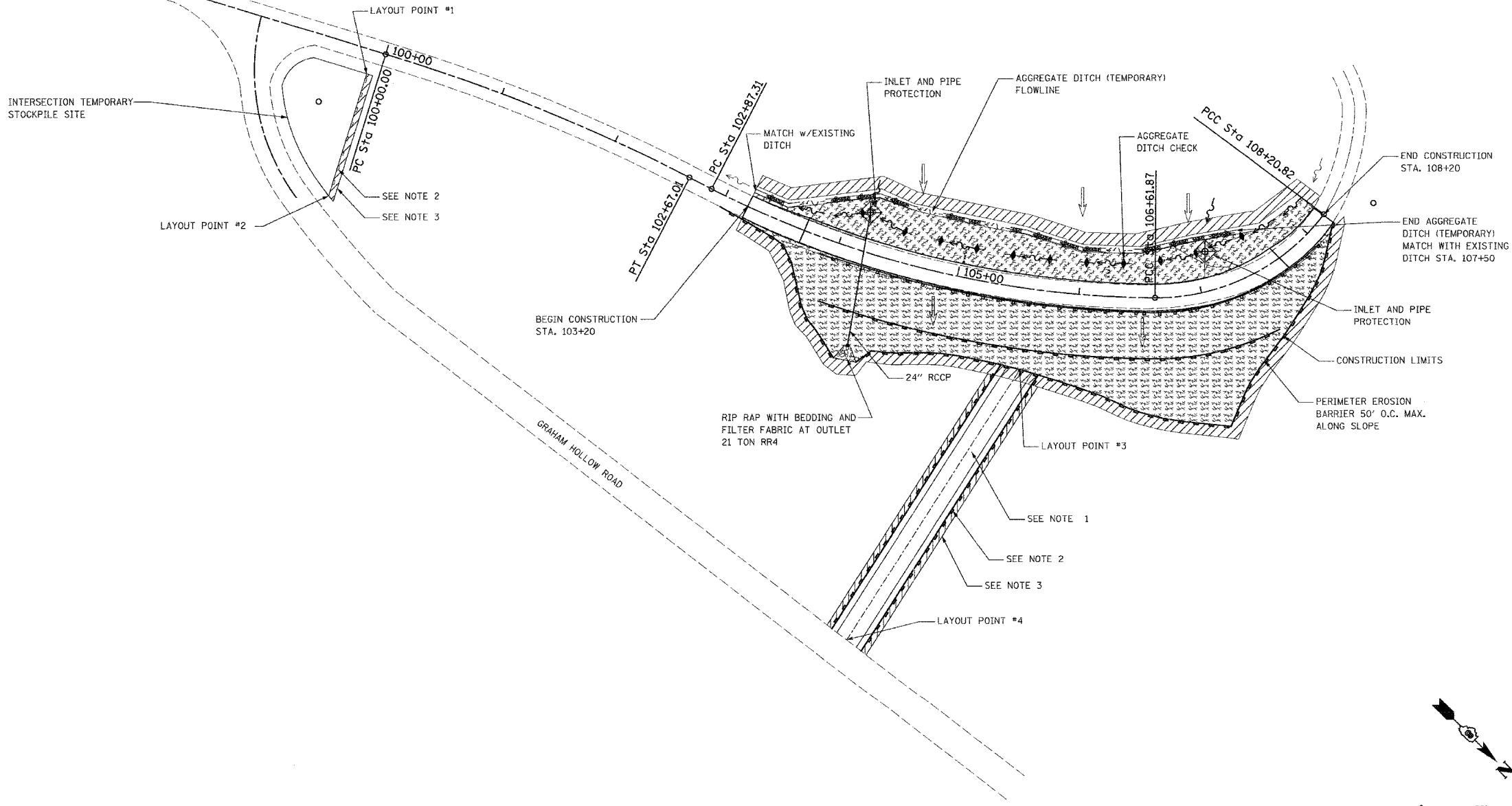
- OPTIONAL ACCESS ROAD LOCATION
- PERIMETER EROSION BARRIER, INCLUDED IN THE COST OF MATERIALS STOCKPILED.
- PRESERVE EXISTING TREES, WOODLANDS, AND UNDERSTORY OUTSIDE CONSTRUCTION LIMITS.
- GENERAL: STORM WATER POLLUTION PREVENTION AND EROSION CONTROL SHALL BE REQUIRED AT TEMPORARY STOCKPILE SITES. USE OF THE SITE(S) IS OPTIONAL. STORM WATER POLLUTION AND EROSION CONTROL MEASURES AT THESE SITES SHALL NOT BE MEASURED OR PAID FOR SEPERATELY BUT SHALL BE CONSIDERED INCLUDED IN THE COST OF MATERIALS STOCKPILED AT THE SITE.

LEGEND

- RIPRAP
- PRESERVE EXISTING TREES, WOODLANDS, AND UNDERSTORY (OUTSIDE CONSTRUCTION LIMITS)
- INLET & PIPE PROTECTION (I&PP) (HAY OR STRAW BALE DITCH CHECKS OR APPROVED SUBSTITUTION)
- AGGREGATE (EROSION CONTROL) DITCH CHECKS: HEIGHT = 2'-0", AGGREGATE B3
- PROPOSED DITCH FLOWLINE
- TEMPORARY DITCH FLOW LINE
- PERIMETER EROSION BARRIER
- AGGREGATE LINED DITCH (TEMPORARY)
- DIRECTION OF OVERLAND FLOW
- TEMPORARY EROSION CONTROL SEEDING AND TEMPORARY MULCH



GILLIAM TEMPORARY STOCKPILE SITE
SCALE: 1"=40'
SEE NOTES 2,3,&4

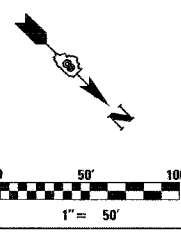


LAYOUT POINTS		
POINT NUMBER	NORTHING	EASTING
1	844668.1861	2203968.7008
2	844716.6238	2204060.7686
3	845214.2415	2203764.0231
4	845271.0309	2204019.6875

PLAN	DATE	BY
NO.		

PROFILE	DATE	BY
NO.		

PLOT DATE = #DATE#
FILE NAME = #FILE#
PLOT SCALE = #SCALE#
USER NAME = #USER#



REVISIONS	
NAME	DATE

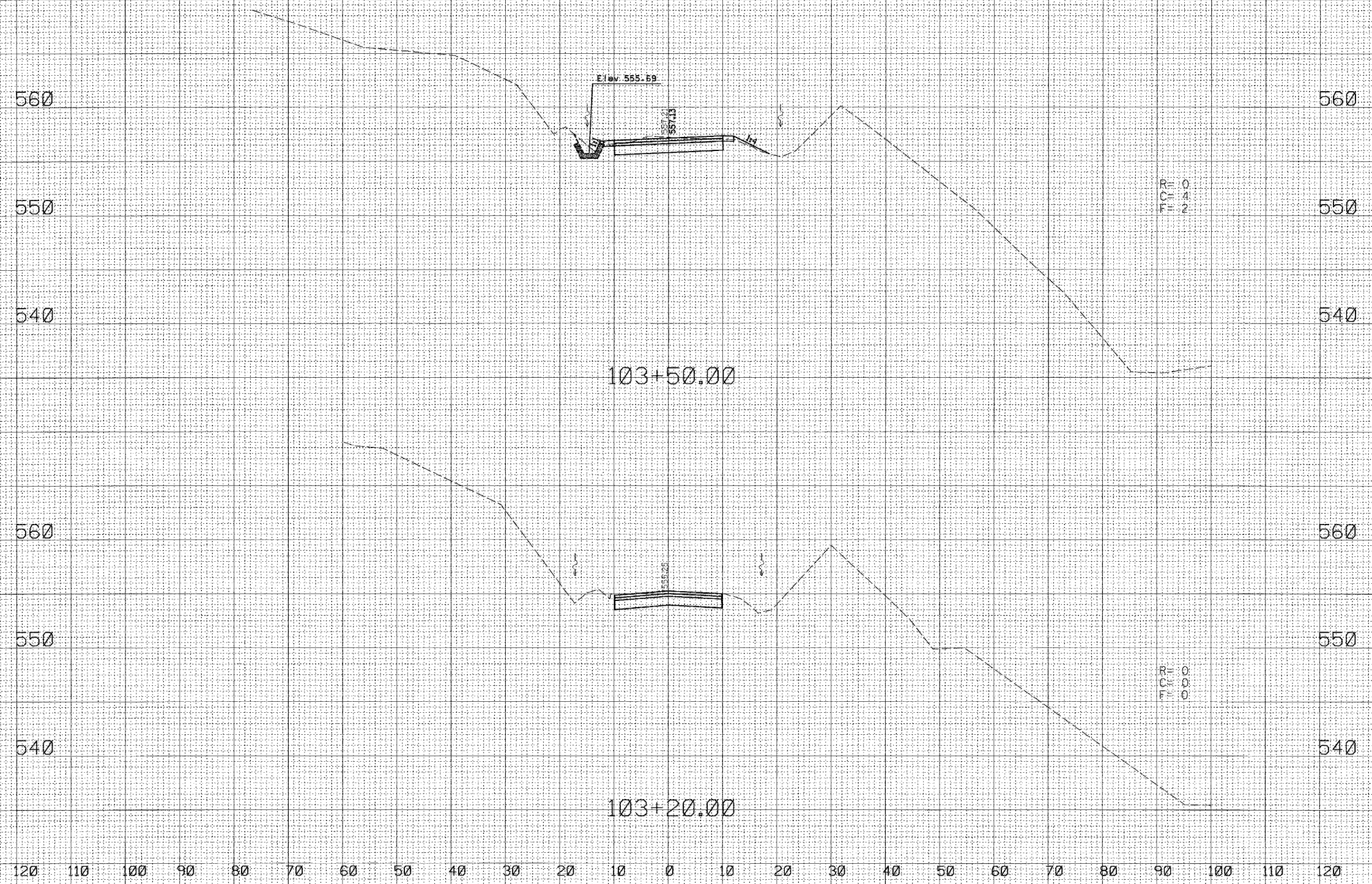
ILLINOIS DEPARTMENT OF TRANSPORTATION

EROSION CONTROL PLAN
IDNR / IHPA STATEWIDE
ARMY ROAD IMPROVEMENTS
PERE MARQUETTE
STATE PARK

SCALE: NONE
DATE: 1-16-07

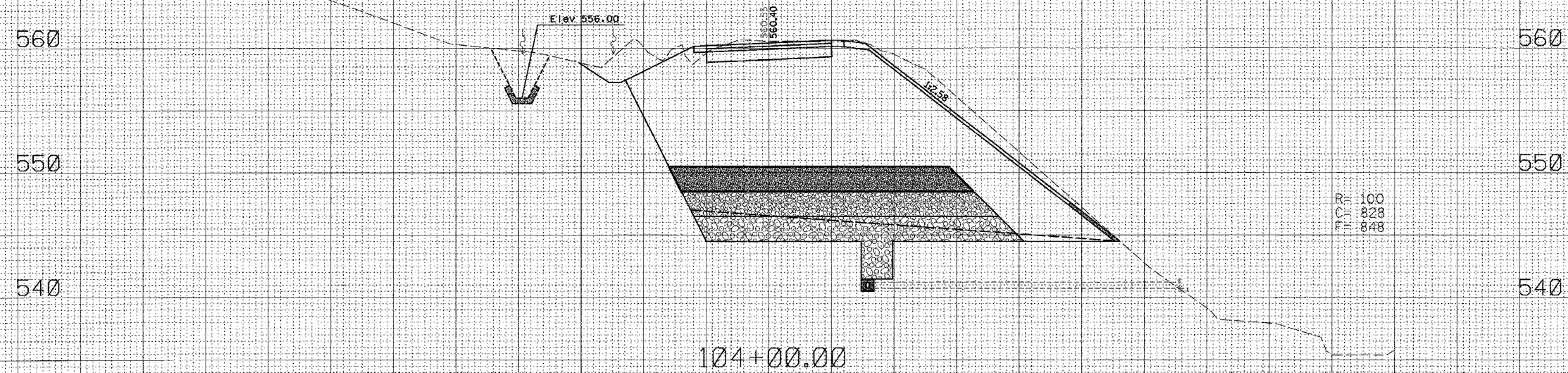
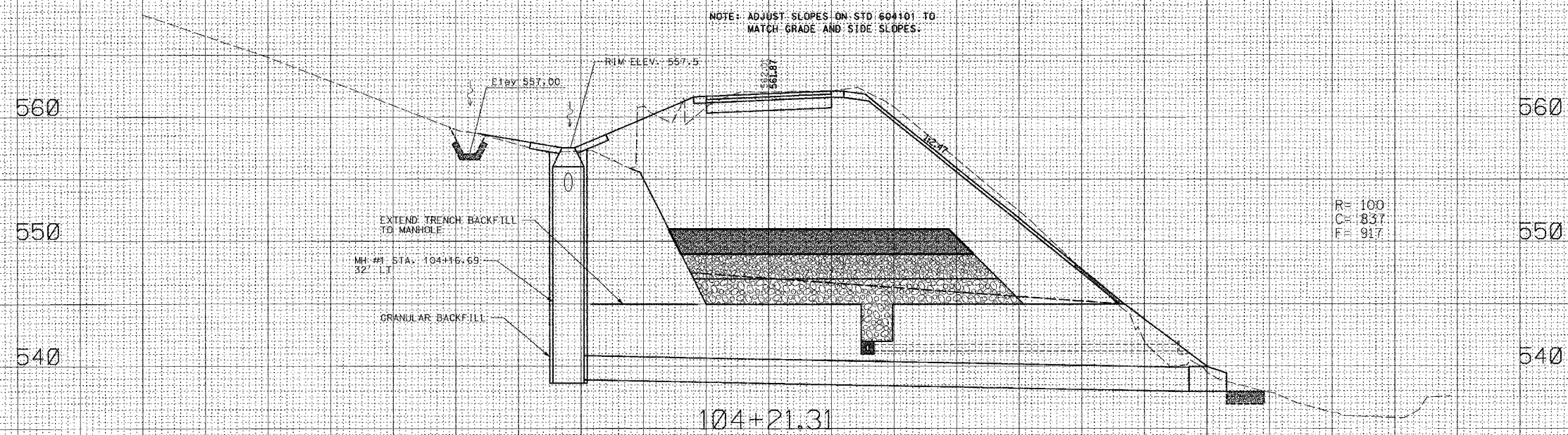
DRAWN BY: JLM
CHECKED BY: KCM

F.A. RTE.	SECTION	COUNTY	TOTAL SHEETS	SHEET NO.
		JERSEY	14	8
STA. 103+20		TO STA. 103+50		
FED. ROAD DIST. NO.	ILLINOIS	FED. AID PROJECT		
CONTRACT NO. 44925				

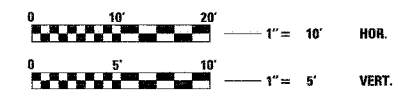


DISTRICT PROJECT ENGINEER - LANCE KIDD

F.A. RTE.	SECTION	COUNTY	TOTAL SHEETS	SHEET NO.
		JERSEY	14	9
STA. 104+00		TO STA. 104+21.31		
FED. ROAD DIST. NO.		ILLINOIS FED. AID PROJECT		
CONTRACT NO. 24925				

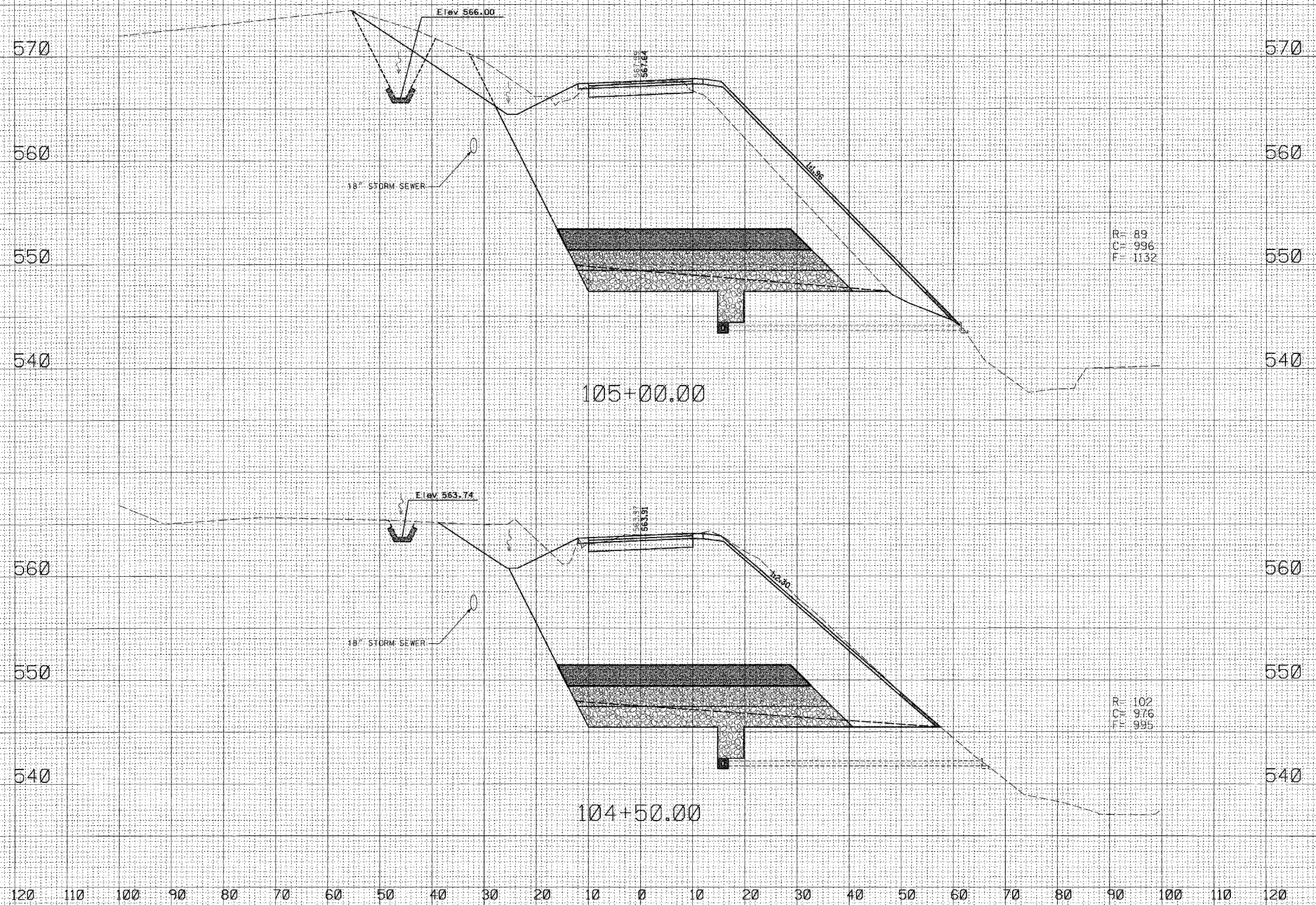


120 110 100 90 80 70 60 50 40 30 20 10 0 10 20 30 40 50 60 70 80 90 100 110 120



DISTRICT PROJECT ENGINEER - LANCE KIDD

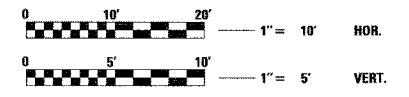
F.A. RTE.	SECTION	COUNTY	TOTAL SHEETS	SHEET NO.
		JERSEY	14	10
STA. 104+50		TO STA. 105+00		
FED. ROAD DIST. NO.		ILLINOIS FED. AID PROJECT		
CONTRACT NO. 44925				



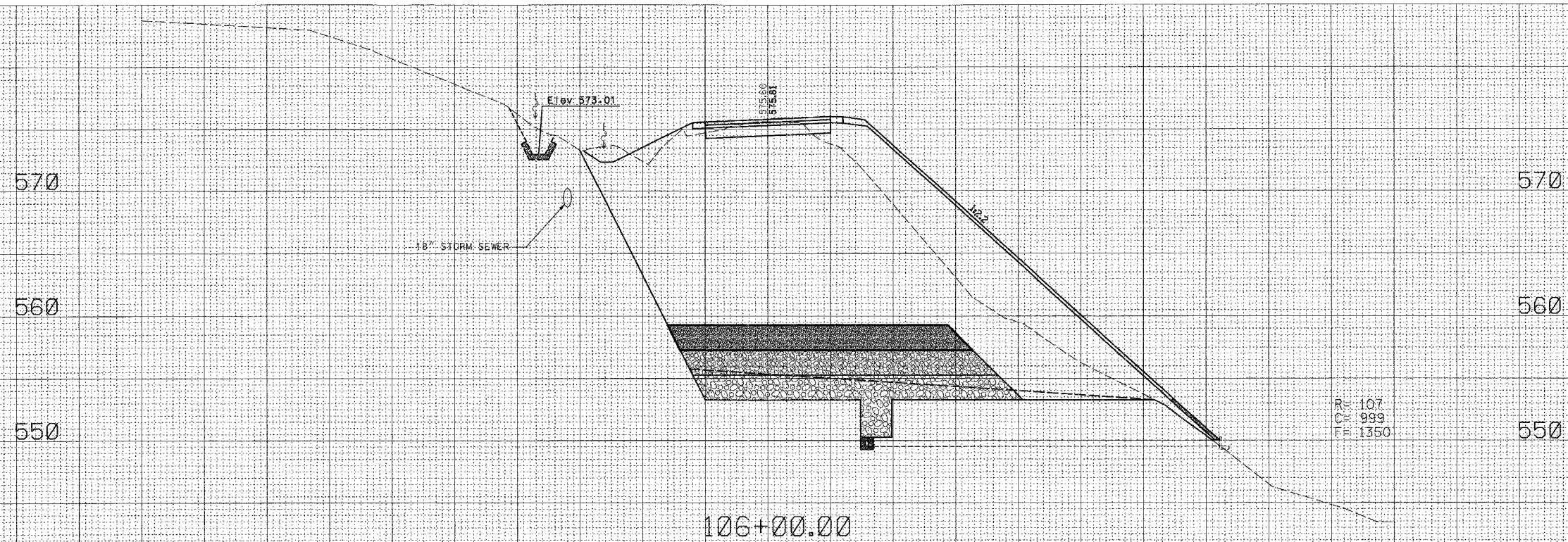
R= 89
C= 996
F= 1132

R= 102
C= 976
F= 995

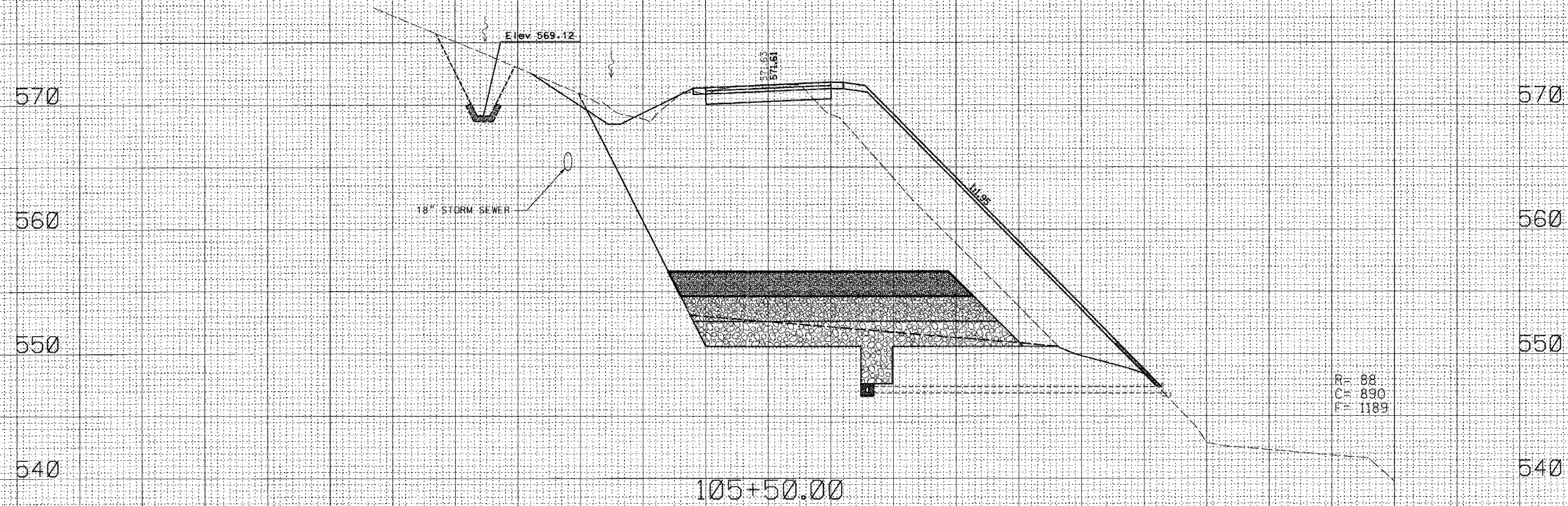
DISTRICT PROJECT ENGINEER - LANCE KIDD



F.A. RTE.	SECTION	COUNTY	TOTAL SHEETS	SHEET NO.
		JERSEY	14	11
STA. 105+50		TO STA. 106+00		
FED. ROAD DIST. NO. ILLINOIS		FED. AID PROJECT		
CONTRACT NO. 44925				



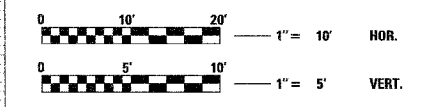
R= 107
 C= 999
 F= 1350



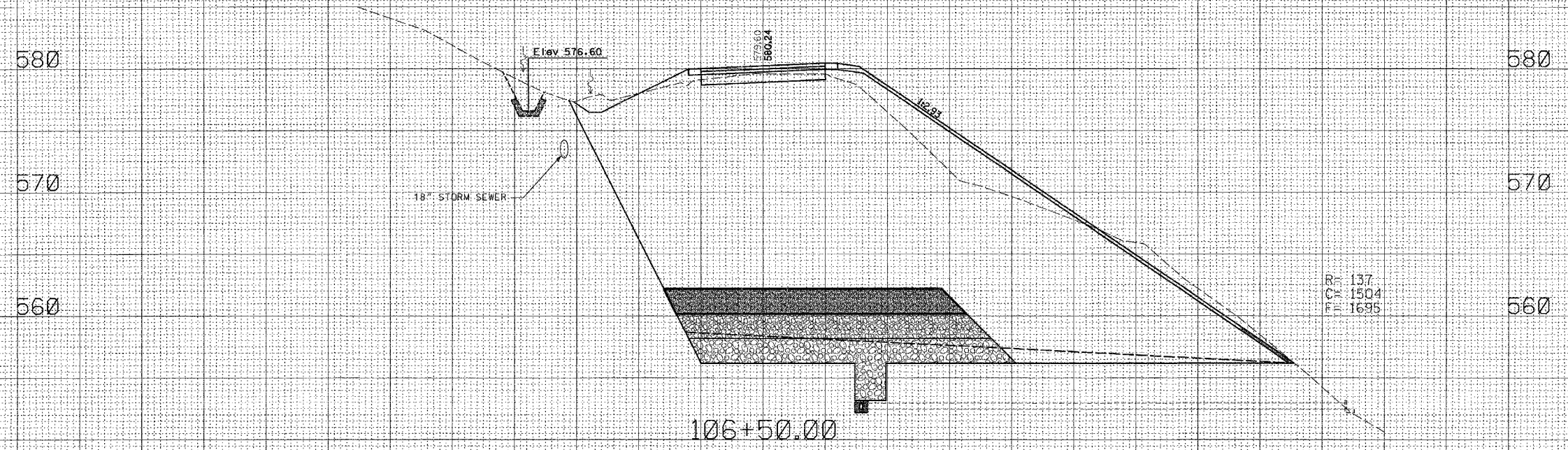
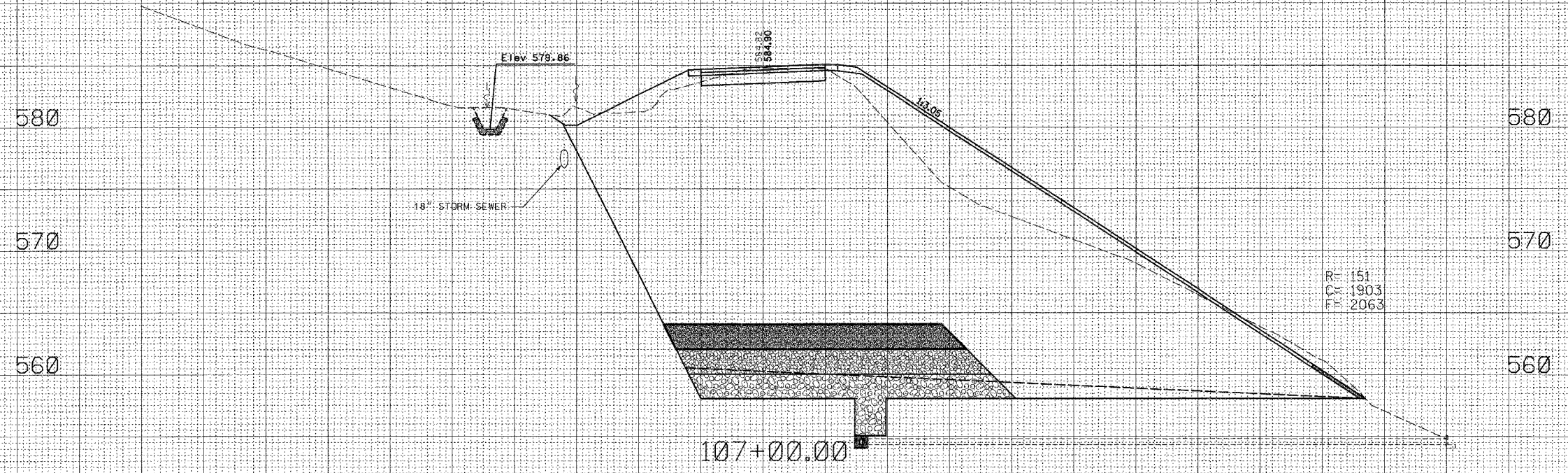
R= 88
 C= 890
 F= 1189

DISTRICT PROJECT ENGINEER - LANCE KIDD

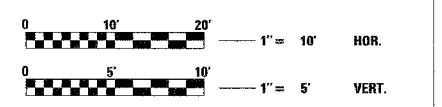
120 110 100 90 80 70 60 50 40 30 20 10 0 10 20 30 40 50 60 70 80 90 100 110 120



F.A. RTE.	SECTION	COUNTY	TOTAL SHEETS	SHEET NO.
		JERSEY	14	12
STA. 106+50		TO STA. 107+00		
FED. ROAD DIST. NO.		ILLINOIS FED. AID PROJECT		
CONTRACT NO. 44925				

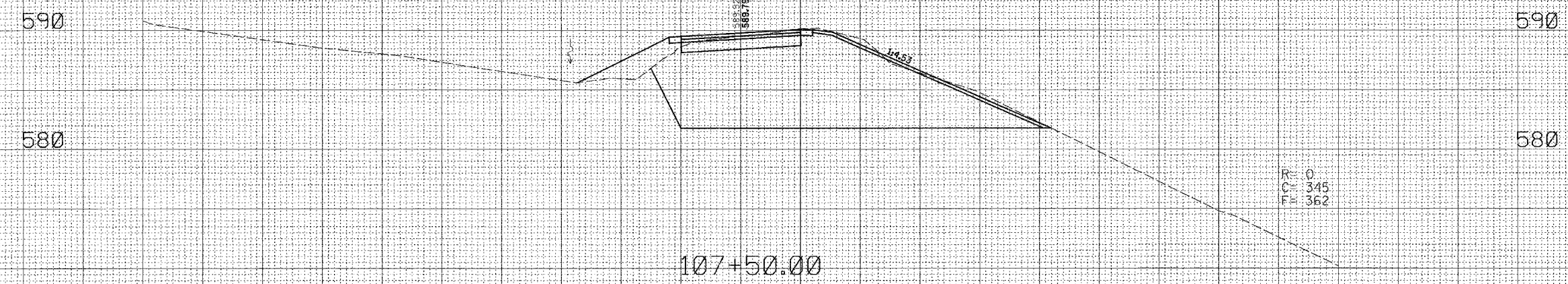


120 110 100 90 80 70 60 50 40 30 20 10 0 10 20 30 40 50 60 70 80 90 100 110 120

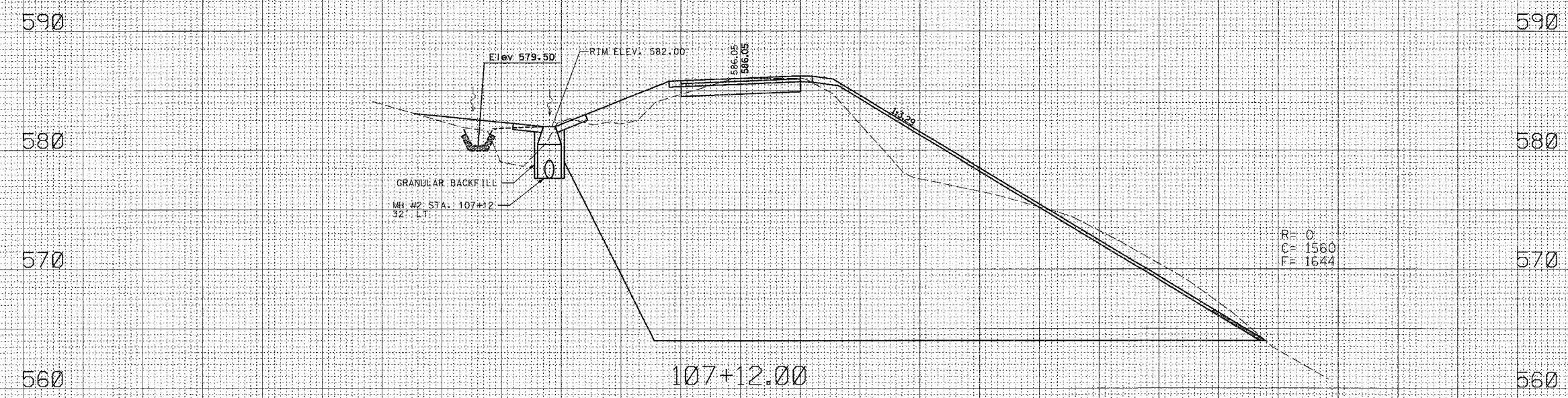


DISTRICT PROJECT ENGINEER - LANCE KIDD

F.A. RTE.	SECTION	COUNTY	TOTAL SHEETS	SHEET NO.
		JERSEY	14	13
STA. 107+12		TO STA. 107+50		
FED. ROAD DIST. NO.		ILLINOIS FED. AID PROJECT		
CONTRACT NO. 44926				



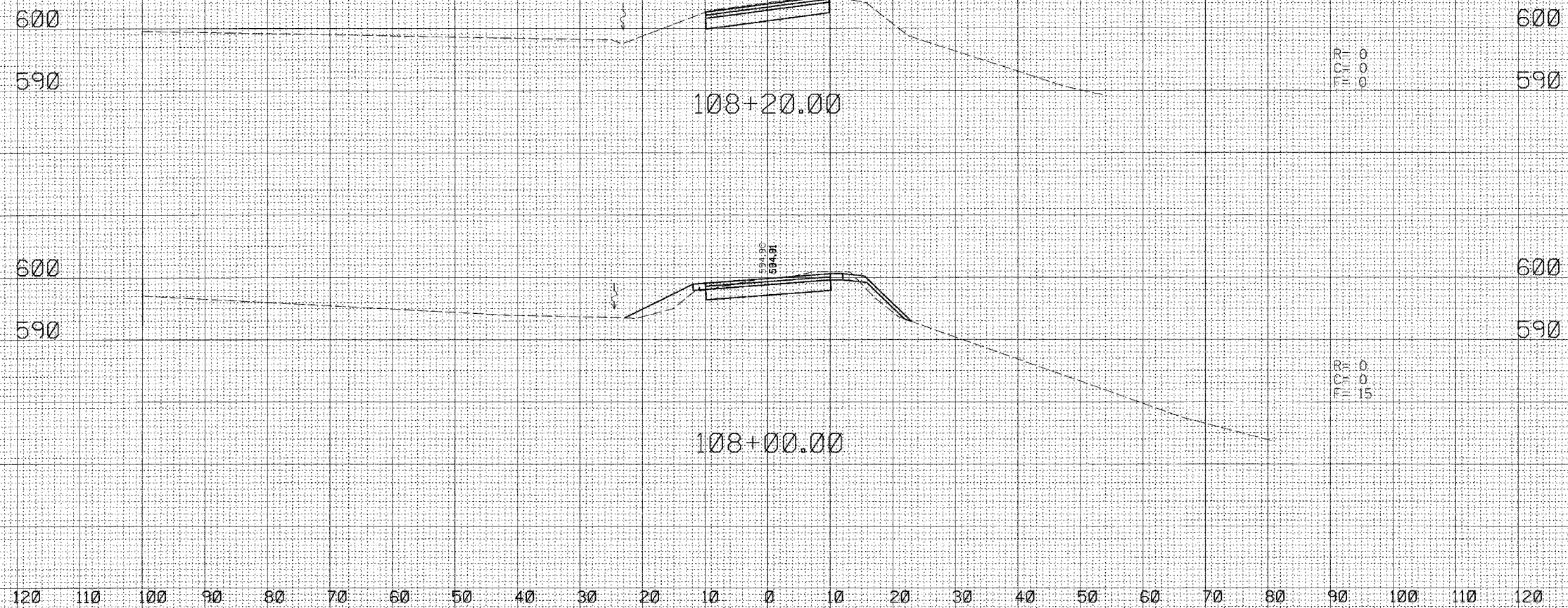
NOTE: ADJUST SLOPES ON STD. 604101 TO MATCH GRADE AND SIDE SLOPES.



DISTRICT PROJECT ENGINEER - LANCE KIDD



F.A. RTE.	SECTION	COUNTY	TOTAL SHEETS	SHEET NO.
		JERSEY	14	14
STA. 108+00		TO STA. 108+20		
FED. ROAD DIST. NO.		ILLINOIS FED. AID PROJECT		
CONTRACT NO. 44925				



DISTRICT PROJECT ENGINEER - LANCE KIDD

