

F.A. RTE.	SECTION	COUNTY	TOTAL SHEETS	SHEET NO.
		POPE	16	1

IDNR PROJECT NO. 5-06-004

STATE OF ILLINOIS  
DEPARTMENT OF TRANSPORTATION  
DIVISION OF HIGHWAYS

# IDOT /IDNR STATEWIDE GOLCONDA MARINA RECREATION AREA

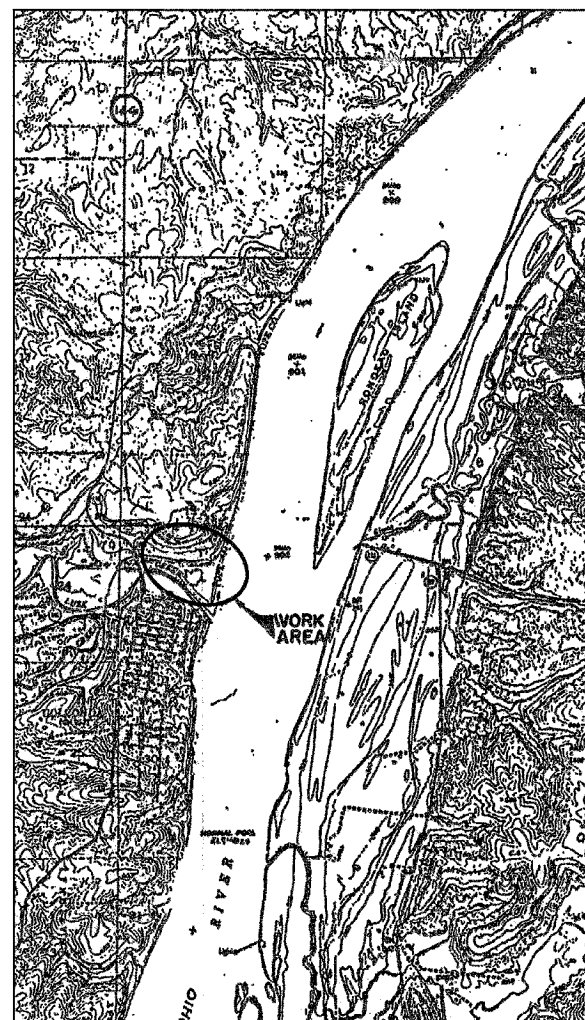
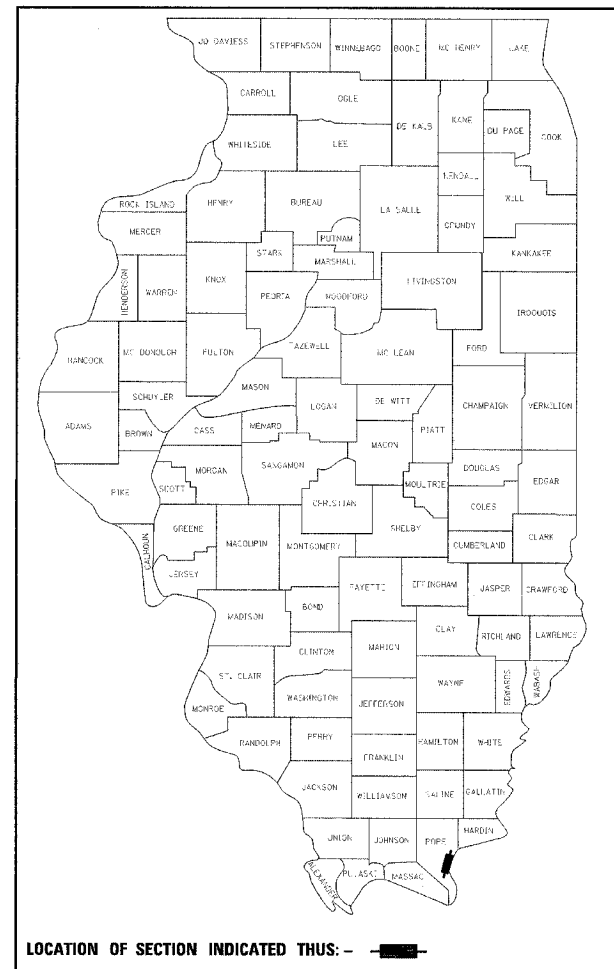
MARINA ROADS AND PARKING LOT IMPROVEMENTS 2006  
POPE COUNTY  
JOB NO. C-30-004-07  
IDNR PROJECT NO. 5-06-004

**INDEX OF SHEETS**

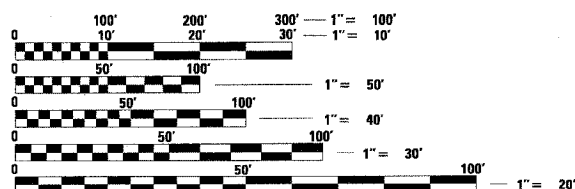
- 1 COVER SHEET
- 2 SUMMARY OF QUANTITIES
- 3 TYPICAL SECTIONS & LEGEND
- 4 SCHEDULE OF QUANTITIES
- 5 CONTROL SURVEY TIES, BENCHMARKS & GENERAL NOTES
- 6 SITE PLAN
- 7 PARKING LOT EXPANSION PLAN
- 8 SAW JOINTS & ELEVATION DETAIL PLAN
- 9 ELECTRICAL PLAN
- 10 EROSION CONTROL PLAN
- 11 PAVEMENT MARKING PLAN
- 12 MISCELLANEOUS DETAILS
- 13-16 CROSS SECTIONS

**STATE STANDARDS**

- 000001-04
- 280001-03
- 420001-06
- 542301-01
- 602306-01
- 602601-01
- 701001-01
- 701301-02
- 701306-01
- 701311-02
- 701501-03
- 702001-06
- 780001-01
- 805001
- 814001-01
- BLR 10-5
- BLR 17-3
- BLR 18-4



**LOCATION MAP**



FULL SIZE PLANS HAVE BEEN PREPARED USING STANDARD ENGINEERING SCALES. REDUCED SIZED PLANS WILL NOT CONFORM TO STANDARD SCALES. IN MAKING MEASUREMENTS ON REDUCED PLANS, THE ABOVE SCALES MAY BE USED.

J.U.L.I.E.  
JOINT UTILITY LOCATION INFORMATION FOR EXCAVATION  
1-800-892-0123

**CONTRACT NO. 44929**



*Ronald G. Cowan* 2/9/07  
SIGNATURE

EXPIRATION DATE NOV. 30, 2007

STATE OF ILLINOIS  
DEPARTMENT OF TRANSPORTATION  
DIVISION OF HIGHWAYS

SUBMITTED *March 1, 20 07*  
*Eric E. Haran*  
DEPUTY DIRECTOR OF HIGHWAYS,

*March 23, 20 07*  
*Eric E. Haran*  
INTERIM ENGINEER OF DESIGN AND ENVIRONMENT

*March 23, 20 07*  
*Milton R. Seew*  
DIRECTOR OF HIGHWAYS, CHIEF ENGINEER

**PRINTED BY THE AUTHORITY  
OF THE STATE OF ILLINOIS**

F.A. RTE.	SECTION	COUNTY	TOTAL SHEETS	SHEET NO.
		POPE	16	2
STA.		TO STA.		
FED. ROAD DIST. NO.		ILLINOIS FED. AID PROJECT		
IDNR PROJECT NO. 5-06-004				

SUMMARY OF QUANTITIES

CODE NO.	ITEM	UNIT	TOTAL
20100500	TREE REMOVAL, ACRES	ACRE	0.1
20200100	EARTH EXCAVATION	CU YD	2,826
20800150	TRENCH BACKFILL	CU YD	17
21101505	TOPSOIL EXCAVATION AND PLACEMENT	CU YD	226
21301052	EXPLORATION TRENCH 52" DEPTH	FOOT	50
● 25000100	SEEDING, CLASS 1	ACRE	0.5
● 25000400	NITROGEN FERTILIZER NUTRIENT	POUND	45
● 25000500	PHOSPHORUS FERTILIZER NUTRIENT	POUND	45
● 25000600	POTASSIUM FERTILIZER NUTRIENT	POUND	45
● 25100115	MULCH, METHOD 2	ACRE	0.3
● 25100630	EROSION CONTROL BLANKET	SQ YD	1225
● 28000300	TEMPORARY DITCH CHECKS	EACH	6
28000400	PERIMETER EROSION BARRIER	FOOT	718
28000500	INLET AND PIPE PROTECTION	EACH	1
31101000	SUB-BASE GRANULAR MATERIAL, TYPE B	TON	1,455
40200800	AGGREGATE SURFACE COURSE, TYPE B	TON	20
40300300	BITUMINOUS MATERIALS (COVER AND SEAL COATS)	GALLON	1,055
40300600	SEAL COAT AGGREGATE	TON	45
● 40300800	EMULSIFIED ASPHALT (FOG SEAL)	GALLON	3,115
● 42000110	PORTLAND CEMENT CONCRETE PAVEMENT 6 1/2"	SQ YD	6,100
48101200	AGGREGATE SHOULDERS, TYPE B	TON	65
● 50105220	PIPE CULVERT REMOVAL	FOOT	12
54201270	PIPE CULVERTS, TYPE 2, RCCP 15"	FOOT	54

CODE NO.	ITEM	UNIT	TOTAL
54213660	PRECAST REINFORCED CONCRETE FLARED END SECTIONS 15"	EACH	1
67100100	MOBILIZATION	L SUM	1
● 70103700	TRAFFIC CONTROL COMPLETE	L SUM	1
● 78001100	PAINT PAVEMENT MARKING-LETTERS AND SYMBOLS	SQ FT	23
● 78001110	PAINT PAVEMENT MARKING-LINE 4"	FOOT	7,415
● 78001180	PAINT PAVEMENT MARKING- LINE 24"	FOOT	15
● 80400105	ELECTRIC SERVICE INSTALLATION, SPECIAL	EACH	1
● 81012300	CONDUIT IN TRENCH, 1" DIA., PVC	FOOT	1,631
● 81100300	CONDUIT ATTACHED TO STRUCTURE, 1" DIA., GALVANIZED STEEL	FOOT	120
● 81300320	JUNCTION BOX, STAINLESS STEEL, ATTACHED TO STRUCTURE, 8" X 8" X 6"	EACH	6
● 81400730	HANDHOLE, COMPOSITE CONCRETE	EACH	3
● 81702120	ELECTRIC CABLE IN CONDUIT, 600V (XLP-TYPE USE) 1/C NO. 8	FOOT	<b>5100</b>
● 81900200	TRENCH AND BACKFILL FOR ELECTRICAL WORK	FOOT	1,631
● 82105600	LUMINAIRE, SODIUM VAPOR, HIGH MAST, HORIZONTAL MOUNT, 400 WATT	EACH	6
● 82500505	LIGHTING CONTROLLER, SPECIAL	EACH	1
● 83057235	LIGHT POLE, WOOD, 40 FOOT, CLASS 5, WITH 15 FT MAST ARM	EACH	6
● 70013798	CONSTRUCTION LAYOUT	L SUM	1
● X0325727	WOOD POST (SPECIAL)	EACH	78
● A2006516	TREE, QUERCUS BICOLOR (SWAMP WHITE OAK), 2" CALIPER, BALLED AND BURLAPPED	EACH	5
● A2002316	TREE, BETULA NIGRA (RIVER BIRCH), 2" CALIPER, BALLED AND BURLAPPED	EACH	5
XX004371	INLETS TYPE B TYPE 61 GRATE	EACH	1

● SPECIALTY ITEMS  
 \* SPECIAL PROVISION  
*Rev.*

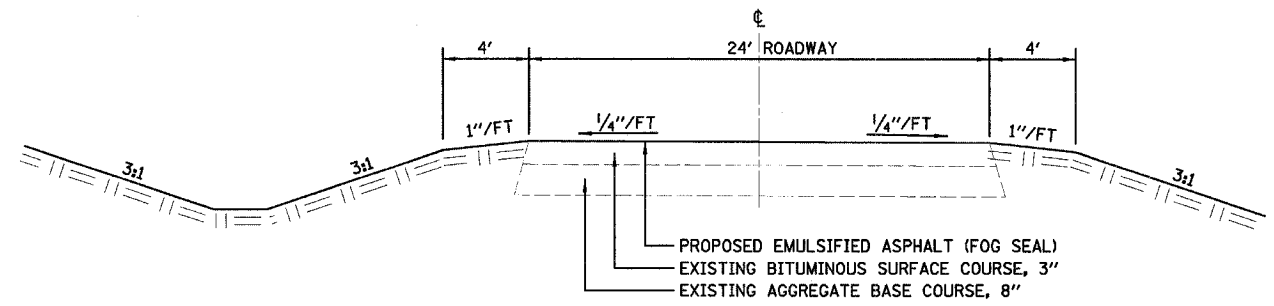
REVISIONS	
DATE	NAME
03/20/07	JJ

ILLINOIS DEPARTMENT OF TRANSPORTATION  
 SUMMARY OF QUANTITIES  
 IDOT / IDNR  
 GOLCONDA MARINA RECREATION AREA

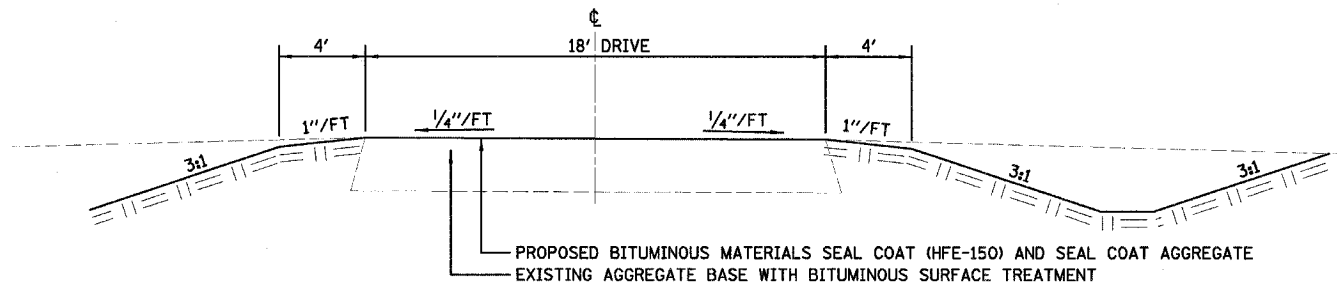
SCALE: VERT.  
 HORIZ.  
 DATE: 8/17/06

DRAWN BY: MAI  
 CHECKED BY: RGD

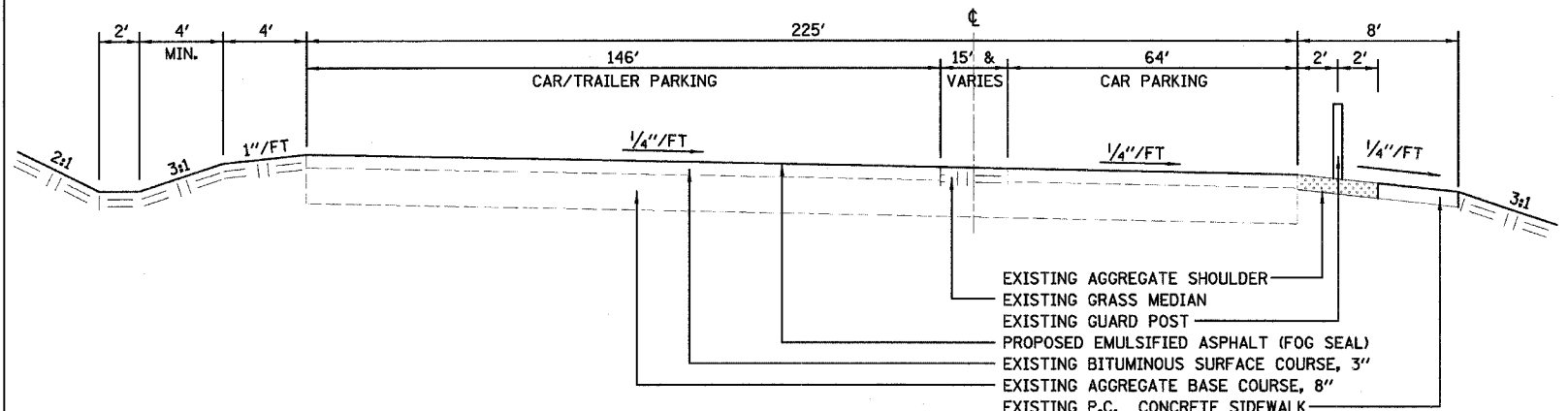
F.A. RTE.	SECTION	COUNTY	TOTAL SHEETS	SHEET NO.
		POPE	16	3
STA.		TO STA.		
FED. ROAD DIST. NO.		ILLINOIS FED. AID PROJECT		
IDNR PROJECT NO. 5-06-004				



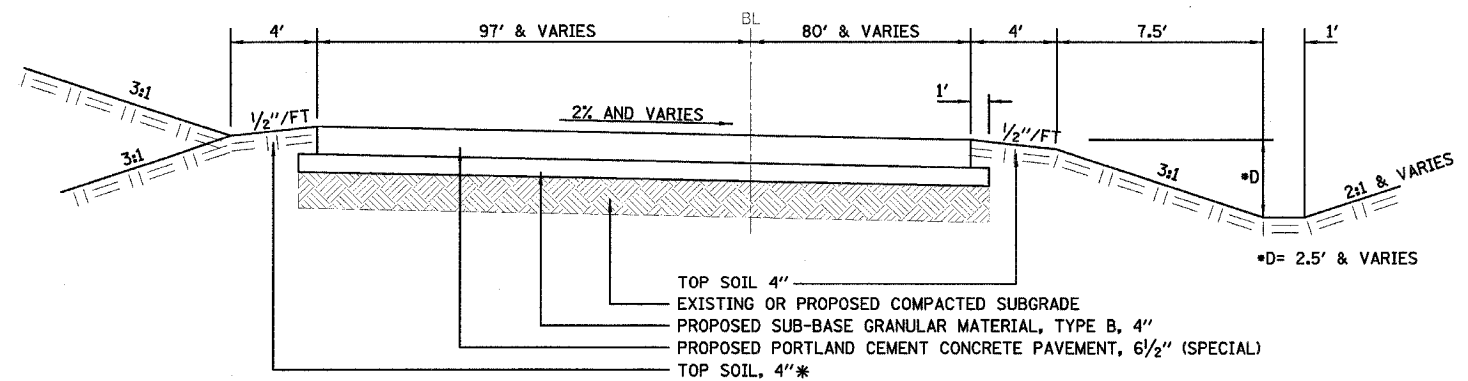
**PROPOSED TYPICAL SECTION**  
EXISTING MARINA DRIVE (FROM IL RTE 146)



**PROPOSED TYPICAL SECTION**  
EXISTING ACCESS DRIVE



**PROPOSED TYPICAL SECTION**  
EXISTING CAR/TRAILER & CAR PARKING LOT AREA



**PROPOSED TYPICAL SECTION**  
PROPOSED NEW PARKING LOT EXPANSION AREA

\* USE AGGREGATE SHOULDERS TYPE B, (6" THICKNESS) ON WEST EDGE OF PARKING LOT WITH PROPOSED WOOD GUARD POSTS (SEE PLAN SHEET NO. 7)

**LEGEND**

**EXISTING**

- IRON ROD- CONTROL POINT
- BENCHMARK
- ⊙ WOOD POST/POST
- ⊙ STREET LIGHT
- ⊙ SIGN
- ⊙ TELEPHONE PEDESTAL
- ⊙ MONITORING WELL/FUEL PUMP
- ⊙ WATER MANHOLE
- ⊙ GAS MANHOLE
- ⊙ SANITARY MANHOLE
- CONTOUR
- FENCE
- CULTIVATION/TIMBER LINE
- PIPE CULVERT VARIOUS SIZES
- WATER EDGE

**PROPOSED**

- ⊙ PIPE CULVERT W/END SECTION AND INLET, TYPE B
- ▨ AGGREGATE SURFACE COURSE, TYPE B, 8"
- ▨ PORTLAND CEMENT CONCRETE PAVEMENT, 6 1/2"
- ▨ BITUMINOUS MATERIALS SEAL COAT AND SEAL COAT AGGREGATE (CA-16)
- ▨ BITUMINOUS MATERIALS (FOG SEAL)
- ▨ AGGREGATE SHOULDER TYPE B, 6"
- WOOD POSTS (SPECIAL) 6"x6"
- TBR TO BE REMOVED

REVISIONS	
NAME	DATE

ILLINOIS DEPARTMENT OF TRANSPORTATION  
TYPICAL SECTIONS AND LEGEND  
IDOT / IDNR  
GOLCONDA MARINA RECREATION AREA

SCALE: VERT. DATE: 8/17/06  
DRAWN BY: MAL  
CHECKED BY: RDG

F.A. RTE.	SECTION	COUNTY	TOTAL SHEETS	SHEET NO.
		POPE	16	4
STA.		TO STA.		
FED. ROAD DIST. NO.		ILLINOIS FED. AID PROJECT		
IDNR PROJECT NO. 5-06-004				

SEEDING TABLE					
LOCATION	SEEDING CLASS 1 (ACRES)	NITROGEN FERTILIZER NUTRIENT (POUND)	PHOSPHORUS FERTILIZER NUTRIENT (POUND)	POTASSIUM FERTILIZER NUTRIENT (POUND)	MULCH, METHOD 2 (ACRES)
STA 5+50 LT/RT TO STA 10+75 LT/RT	0.5	45	45	45	0.3
<b>TOTAL</b>	<b>0.5</b>	<b>45</b>	<b>45</b>	<b>45</b>	<b>0.3</b>

PAINT MARKING TABLE			
LOCATION	LETTERS & SYMBOLS (S.F)	MARKING LINE 4" (FOOT)	MARKING LINE 24" (FOOT)
MARINA DRIVEWAY		450	15
NEW PARKING LOT	23	2,960	
EX CAR/TRAILER LOT		2,590	
EX CAR LOT		1,415	
<b>TOTAL</b>	<b>23</b>	<b>7,415</b>	<b>15</b>

ELECTRIC TABLE								
LOCATION	WOOD POLES, 30 FT CLASS 5 (EACH)	LUMINARE SODIUM VAPOR HORIZONTAL MOUNT 400 WATT (EACH)	JUNCTION BOX SPECIAL (EACH)	JUNCTION BOX ATTACHED TO STRUCTURE (EACH)	ELECTRIC SERVICE INSTALLATION (EACH)	LIGHTING CONTROLLER (EACH)	LIGHTING CONTROL RELAY (EACH)	GROUND ROD 5/8"x10" (EACH)
STA 6+30, 19' RT	1	1		1				1
STA 6+39, 410' LT			1					1
STA 6+83, 253' LT			1					1
STA 7+23, 82' RT	1	1		1				1
STA 7+65, 99' LT	1	1		1				1
STA 8+46, 137' LT			1					1
STA 8+75, 82' RT	1	1		1				1
STA 9+08, 47' LT	1	1		1				1
STA 10+19, 43' RT	1	1		1				1
STA 5+44, 37' RT			1					1
STA 5+54, 632' LT						1	1	1
<b>TOTAL</b>	<b>6</b>	<b>6</b>	<b>4</b>	<b>6</b>	<b>1</b>	<b>1</b>	<b>1</b>	<b>10</b>

PERIMETER EROSION BARRIER	
LOCATION	FOOT
STA 5+90, LT TO STA 10+270	650
STA 6+25, LT TO STA 6+30, LT	68
<b>TOTAL</b>	<b>718</b>

SUB-BASE GRANULAR MATERIAL, TYPE B	
LOCATION	TON
NEW PARKING LOT	1,455
<b>TOTAL</b>	<b>1,455</b>

INLET AND PIPE PROTECTION	
LOCATION	EACH
STA 6+35.32, 79.42' LT	1
<b>TOTAL</b>	<b>1</b>

AGGREGATE SHOULDERS, TYPE B	
LOCATION	TON
NEW PARKING LOT STA 6+45, LT TO STA 9+54, LT	65
<b>TOTAL</b>	<b>65</b>

PIPE CULVERT TABLE					
LOCATION	INLETS, TYPE B W/ TYPE 61 GRATE (EACH)	PIPE CULVERT TYPE 2, RCCP, 15" (FOOT)	PRECAST REINFORCED CONCRETE FLARED END SECTION 15" (EACH)	TRENCH BACKFILL (CU YD)	PIPE CULVERT REMOVAL (FOOT)
STA 6+20, 53' LT		54		17	
STA 6+03.80, 25.38' LT			1		
STA 6+35.32, 79.42' LT	1				12
STA 6+30, 60' LT					
<b>TOTAL</b>	<b>1</b>	<b>54</b>	<b>1</b>	<b>17</b>	<b>12</b>

BITUMINOUS TABLE			
LOCATION	BITUMINOUS MATERIALS (COVER & SEAL COATS) HFE-150 GALLONS	SEAL COAT AGGREGATE (CA-16) TON	BITUMINOUS FOG COAT (SS-1) GALLONS
MARINA DRIVEWAY			965
ACCESS DRIVEWAY	1,055	45	
EX CAR/TRAILER LOT			1,500
EX CAR LOT			650
<b>TOTAL</b>	<b>1,055</b>	<b>45</b>	<b>3,115</b>

AGGREGATE SURFACE COURSE, TYPE B	
LOCATION	TON
EXISTING ENTRANCE TO STORAGE BUILDING STA 8+33, 133' LT	20
<b>TOTAL</b>	<b>20</b>

EROSION CONTROL BLANKET	
LOCATION	SQ YD
STA 6+31, 28.19' RT TO STA 10+18, 38' RT	1225
<b>TOTAL</b>	<b>1225</b>

ELECTRIC CONDUIT TABLE			
LOCATION	CONDUIT IN TRENCH 1" DIAMETER PVC (FOOT)	TRENCH & BACKFILL (FOOT)	ELECTRICAL CABLE IN CONDUIT, 600 VOLT, (XLP-TYPE USE) 1/C NO. 8 (FOOT)
STA 5+54, 632' LT TO STA 6+39, 410' LT	240	240	489.0
STA 6+39, 410' LT TO STA 6+83, 253' LT	166	166	335.0
STA 6+83, 253' LT TO STA 8+46, 137' LT	206	206	415.0
STA 8+46, 137' LT TO STA 9+08, 46' LT	115	115	168.5
STA 9+08, 46' LT TO STA 10+19, 43' RT	158	158	211.0
STA 10+19, 43' RT TO STA 8+75, 82' RT	168	168	221.5
STA 8+75, 82' RT TO STA 7+23, 82' RT	153	153	206.5
STA 8+46, 137' LT TO STA 7+65, 99' LT	101	101	154.5
STA 7+65, 99' LT TO STA 6+30, 19' RT	130	130	283.5
STA 6+30, 19' RT TO STA 5+44, 37' RT	90	230	95
<b>TOTAL</b>	<b>1,630.5</b>	<b>1,630.5</b>	<b>2,580</b>

EARTHWORK TABLE								
RAW EARTH EXCAVATION (CU YD)	RAW EARTH FILL (CU YD)	TOP SOIL IN CUT (CU YD)	TOP SOIL IN FILL (CU YD)	EARTH EXCAVATION PLUS TOPSOIL IN CUT (CU YD)	EARTH EXCAVATION ADJUSTED WITH SHRINKAGE FACTOR=25%	FILL MINUS TOPSOIL IN FILL (CU YD)	TOTAL TOPSOIL (CU YD)	ADJUSTED FILL MINUS ADJUSTED EARTH EXCAVATION (CU YD)
2,826	2,001	127	99	2,953	2,215	1,902	226	(-)313 (WASTE)

REVISIONS	
NAME	DATE

ILLINOIS DEPARTMENT OF TRANSPORTATION  
 SCHEDULE OF QUANTITIES  
 IDOT / IDNR  
 GOLCONDA MARINA RECREATION AREA

SCALE: VERT. HORIZ. DATE: 8/17/06

DRAWN BY: MAL CHECKED BY: ROD

F.A. RTE.	SECTION	COUNTY	TOTAL SHEETS	SHEET NO.
		POPE	16	5
STA.		TO STA.		
FED. ROAD DIST. NO.		ILLINOIS FED. AID PROJECT		
IDNR PROJECT NO. 5-06-004				

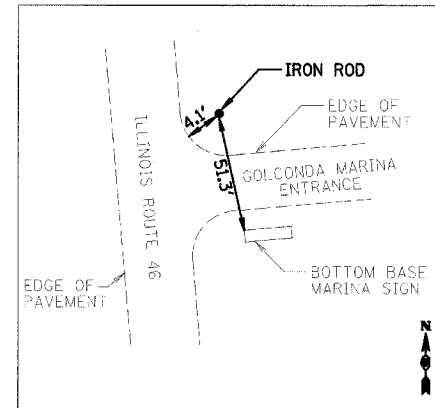
LAYOUT COORDINATE SCHEDULE			
POINT	NORTHING	EASTING	DESCRIPTION/ REMARKS
8000	257102.894	939181.474	IRON ROD
8003	256943.551	941323.565	IRON ROD
8004	256903.777	940778.859	IRON ROD
8005	256853.194	941486.760	IRON ROD
8006	256917.497	941036.147	IRON ROD
1	256875.92	91384.180	STA 5+50
2	257362.86	941512.93	STA 10+50

BENCHMARK LOCATIONS		
NUMBER	DESCRIPTION	ELEVATION
①	SET IN EAST MOST POST ON SOUTH SIDE MARINA ENTRANCE ROAD NEAR LOADING RAMP	342.72
②	TOP OF WEST MOST POST ON SOUTH SIDE OF MARINA ROAD APPROXIMATELY 1500 FOOT EAST OF RTE 146	354.35

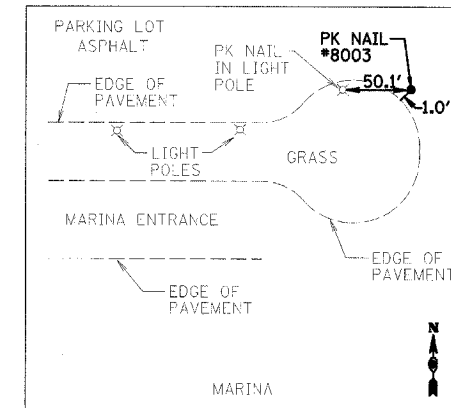
APPLICATION RATES	
BITUMINOUS MATERIALS SEAL COAT HFE-150	0.30 GAL/SY (A-1 CHIP SEAL)
BITUMINOUS MATERIALS SEAL COAT (FOG COAT)	0.20 GAL/SY
GRANULAR MATERIALS	2.05 TONS/CY
NITROGEN FERTILIZER NUTRIENT	90 LB/ACRE
PHOSPHORUS FERTILIZER NUTRIENT	90 LB/ACRE
POTASSIUM FERTILIZER NUTRIENT	90 LB/ACRE
MULCH, METHOD 2	2 TONS/ACRE

**GENERAL NOTES**

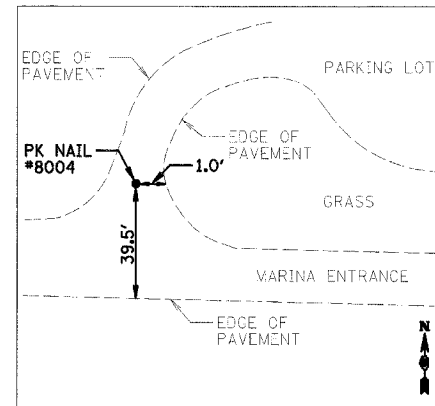
- 1.) IF SO DIRECTED BY THE ENGINEER, DITCHES ADJACENT TO EMBANKMENTS SHALL BE CONSTRUCTED PRIOR TO STARTING THE CONSTRUCTION OF THE EMBANKMENT FILL.
- 2.) THE ALGEBRAIC DIFFERENCE BETWEEN THE PAVEMENT AND SHOULDER SLOPES SHALL NOT EXCEED 8%. THE SHOULDER ON THE OUTSIDE OF SUPERELEVATED CURVES SHALL BE FLATTENED ACCORDINGLY.
- 3.) TREES SHALL BE PRESERVED THROUGHOUT THIS SECTION AS SHOWN ON THE PLANS AND AS DIRECTED BY THE ENGINEER. GENERALLY, TREES OUTSIDE THE CLEAR ZONE, AND WHICH DO NOT INTERFERE WITH CONSTRUCTION, SHALL NOT BE DISTURBED.
- 4.) EARTHWORK COMPACTION SHALL BE TO THE SATISFACTION OF THE ENGINEER.
- 5.) ALL PIPE CULVERTS DESIGNATED ON THE PLANS (R.C.C.P.) SHALL BE "REINFORCED CONCRETE CULVERT, STORM DRAIN AND SEWER PIPE" CONFORMING TO THE REQUIREMENTS OF ARTICLE 1040.03.
- 6.) PROTECTIVE COAT SHALL BE APPLIED TO ALL PAVEMENT SURFACE AS NEEDED ACCORDING TO THE SEASONAL REQUIREMENTS OF ARTICLE 420.21.



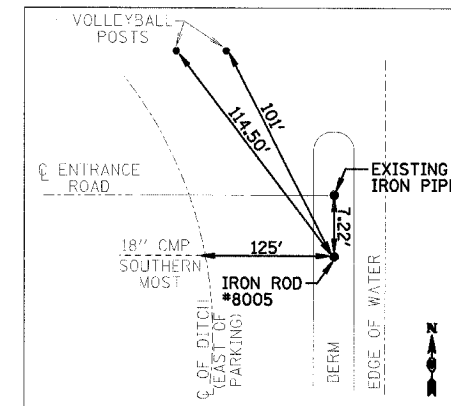
CONTROL TIE #8000  
IRON ROD  
N.T.S.



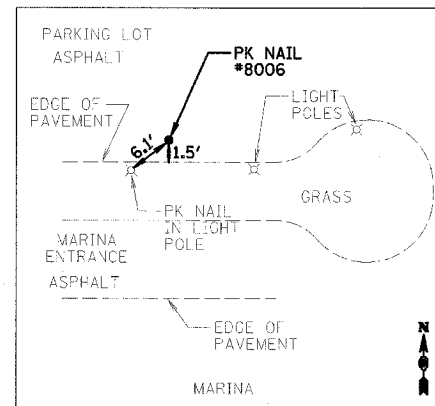
CONTROL TIE #8003  
PK NAIL IN ASPHALT  
N.T.S.



CONTROL TIE #8004  
PK NAIL IN ASPHALT  
N.T.S.



CONTROL TIE #8005  
IRON ROD  
N.T.S.



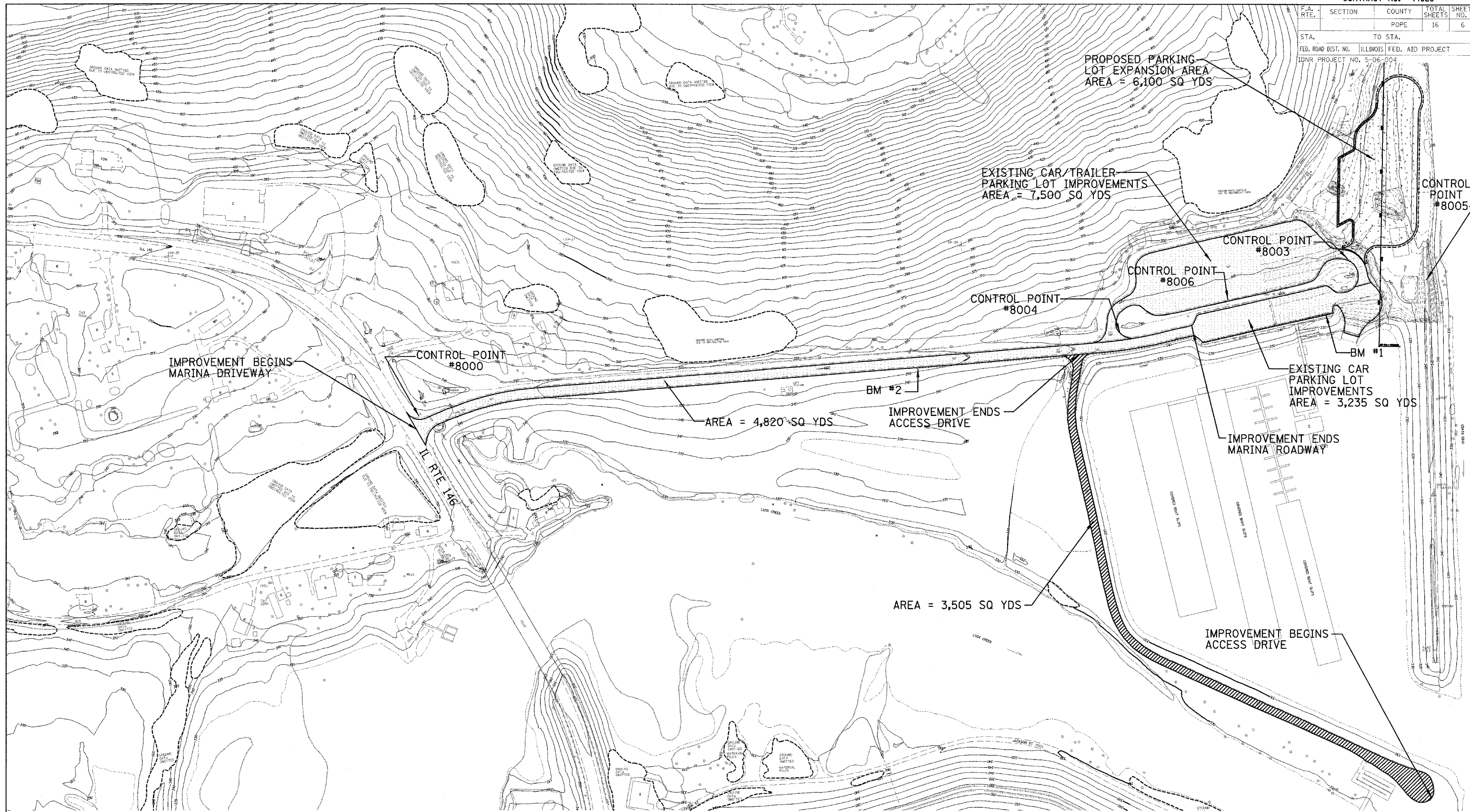
CONTROL TIE #8006  
PK NAIL IN ASPHALT  
N.T.S.

REVISIONS	
NAME	DATE

ILLINOIS DEPARTMENT OF TRANSPORTATION  
SURVEY TIES, BENCHMARKS  
AND GENERAL NOTES  
IDOT / IDNR  
GOLCONDA MARINA RECREATION AREA

SCALE: VERT.  
HORIZ.  
DATE: 06/17/06  
DRAWN BY: MAL  
CHECKED BY: RGD

F.A. RTE.	SECTION	COUNTY	TOTAL SHEETS	SHEET NO.
		POPE	16	6
STA.		TO STA.		
FED. ROAD DIST. NO.		ILLINOIS FED. AID PROJECT		
IDNR PROJECT NO. 5-06-004				

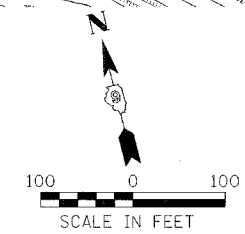


REVISIONS	
NAME	DATE

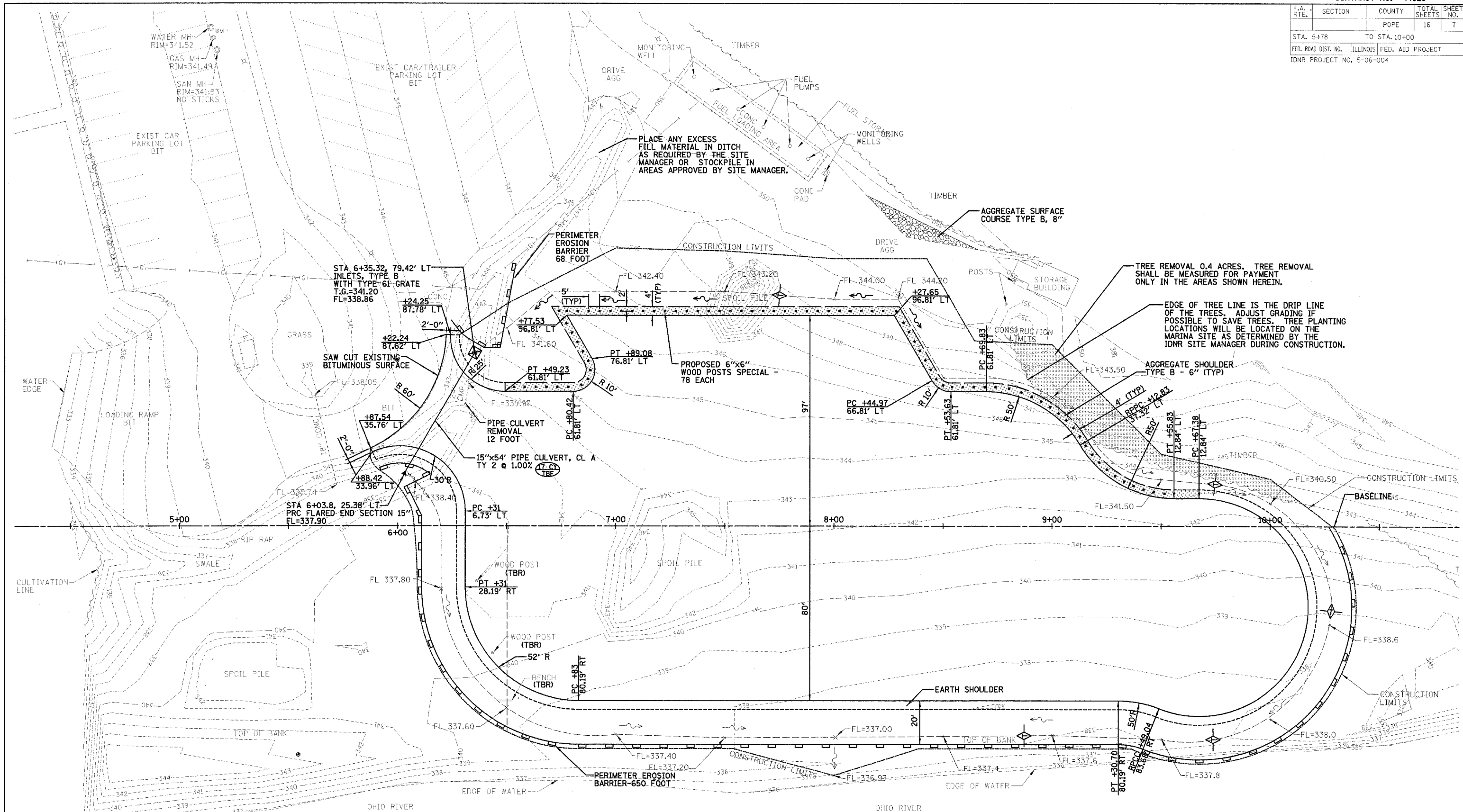
ILLINOIS DEPARTMENT OF TRANSPORTATION  
 SITE PLAN  
 IDOT / IDNR  
 GOLCONDA MARINA RECREATION AREA

SCALE: VERT. \_\_\_\_\_  
 HORIZ. \_\_\_\_\_  
 DATE: 8/17/06

DRAWN BY: MAL  
 CHECKED BY: RGD



F.A. RTE.	SECTION	COUNTY	TOTAL SHEETS	SHEET NO.
		POPE	16	7
STA. 5+78		TO STA. 10+00		
FED. ROAD DIST. NO. ILLINOIS FED. AID PROJECT				
IDNR PROJECT NO. 5-06-004				

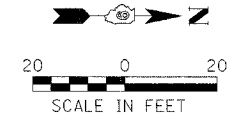


REVISIONS	
NAME	DATE

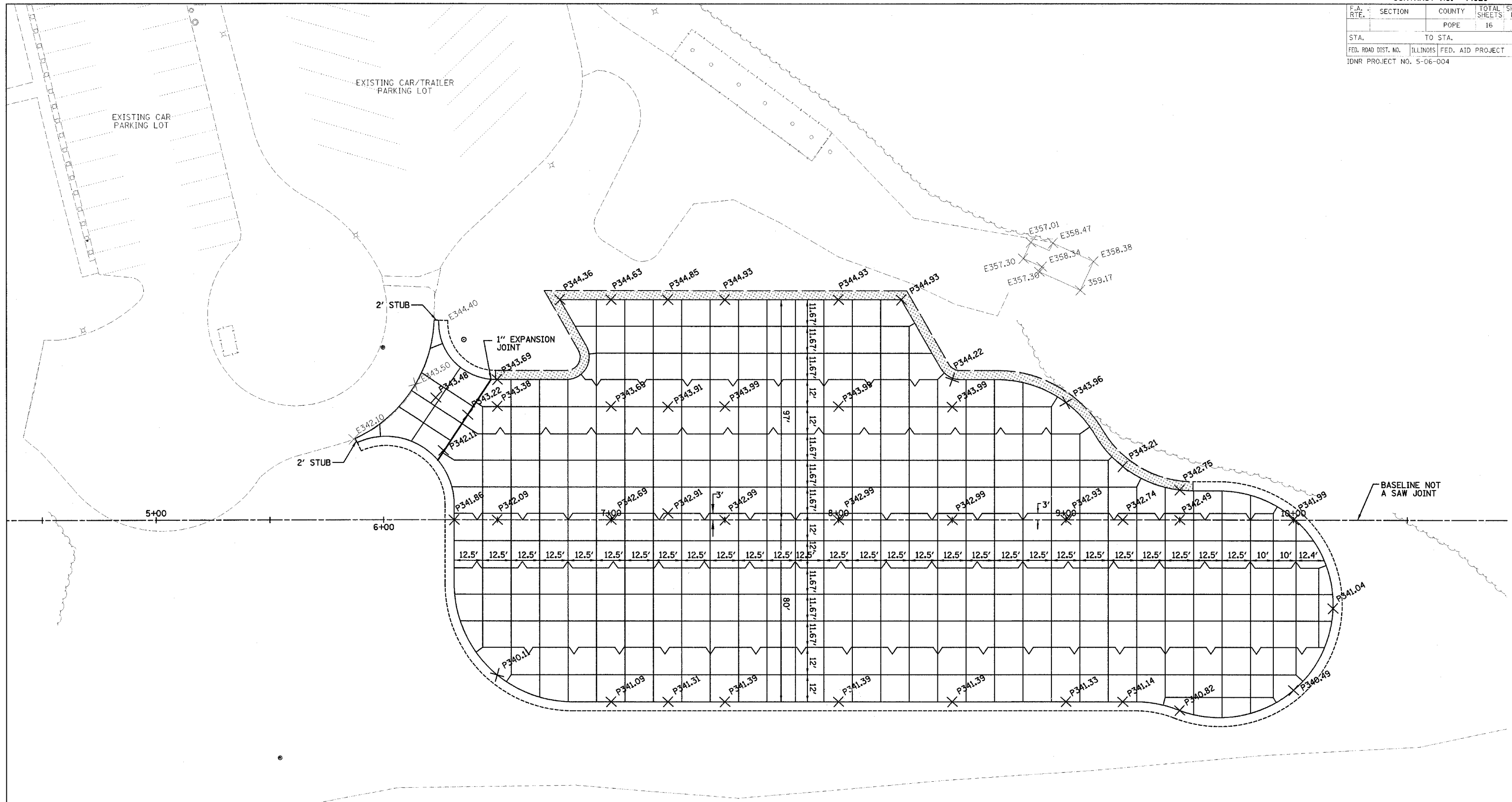
ILLINOIS DEPARTMENT OF TRANSPORTATION  
 PARKING LOT EXPANSION PLAN  
 IDOT / IDNR  
 GOLCONDA MARINA RECREATION AREA

SCALE: VERT. \_\_\_\_\_  
 HORIZ. \_\_\_\_\_  
 DATE: 8/17/06

DRAWN BY: MAL  
 CHECKED BY: RGD

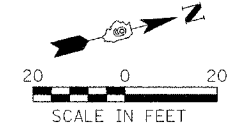


F.A. RTE.	SECTION	COUNTY	TOTAL SHEETS	SHEET NO.
		POPE	16	8
STA.	TO STA.			
FED. ROAD DIST. NO.	ILLINOIS	FED. AID PROJECT		
IDNR PROJECT NO. 5-06-004				



LEGEND

- E342.1 X EXISTING GROUND ELEVATION
- P340.95 X PROPOSED GROUND ELEVATION
- SAWED JOINT
- KEYED LONGITUDINAL CONSTRUCTION JOINT
- 1" EXPANSION JOINT



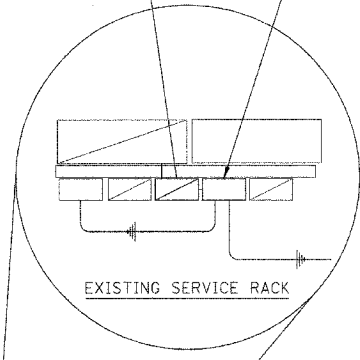
REVISIONS	
NAME	DATE

ILLINOIS DEPARTMENT OF TRANSPORTATION  
 PARKING LOT SAW JOINTS  
 & ELEVATION DETAIL  
 IDOT / IDNR  
 GOLCONDA MARINA RECREATION AREA

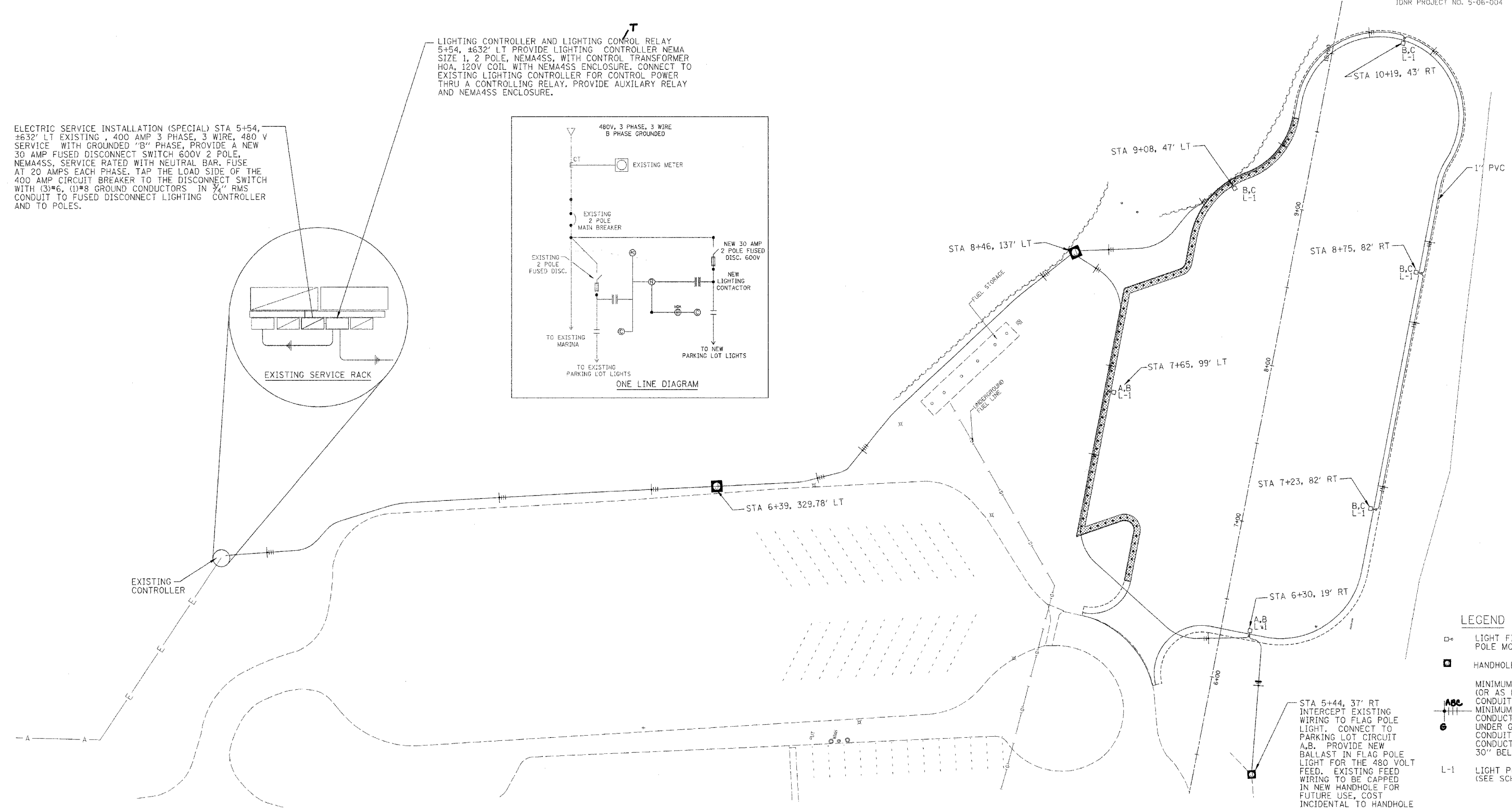
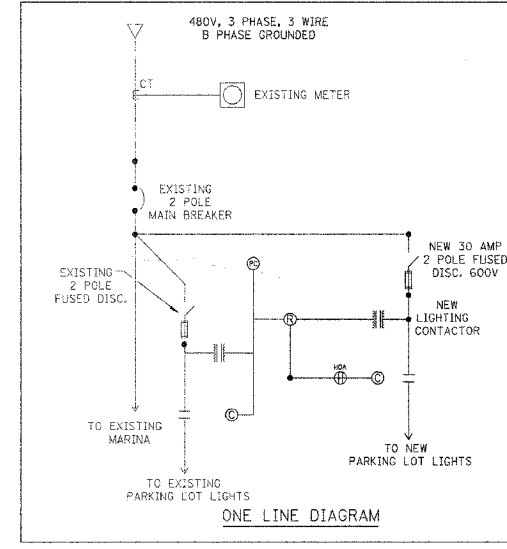
SCALE: VERT. DATE: 8/17/06  
 HORIZ. DRAWN BY: MAL  
 CHECKED BY: RGD



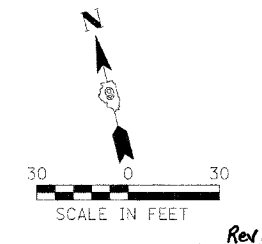
ELECTRIC SERVICE INSTALLATION (SPECIAL) STA 5+54, #632' LT EXISTING, 400 AMP 3 PHASE, 3 WIRE, 480 V SERVICE WITH GROUNDED "B" PHASE, PROVIDE A NEW 30 AMP FUSED DISCONNECT SWITCH 600V 2 POLE, NEMA4SS, SERVICE RATED WITH NEUTRAL BAR. FUSE AT 20 AMPS EACH PHASE. TAP THE LOAD SIDE OF THE 400 AMP CIRCUIT BREAKER TO THE DISCONNECT SWITCH WITH (3)\*6, (1)\*8 GROUND CONDUCTORS IN 3/4" RMS CONDUIT TO FUSED DISCONNECT LIGHTING CONTROLLER AND TO POLES.



LIGHTING CONTROLLER AND LIGHTING CONTROL RELAY 5+54, #632' LT PROVIDE LIGHTING CONTROLLER NEMA SIZE 1, 2 POLE, NEMA4SS, WITH CONTROL TRANSFORMER HOA, 120V COIL WITH NEMA4SS ENCLOSURE. CONNECT TO EXISTING LIGHTING CONTROLLER FOR CONTROL POWER THRU A CONTROLLING RELAY. PROVIDE AUXILIARY RELAY AND NEMA4SS ENCLOSURE.



LUMINAIRE SCHEDULE							
TYPE	LUMINAIRE		LAMP DATA				
	DESCRIPTION		VOLT AMPS	VOLTS	LAMP CODE	QUANTITY	WATTS
L-1	LUMINAIRE, SODIUM VAPOR	WOODEN POLE MOUNTED OUTDOOR LIGHT FIXTURE WITH 8' ARM. PROVIDE ALL ACCESSORIES FOR MOUNTING ON POLE.	465	480	400 S	6	400



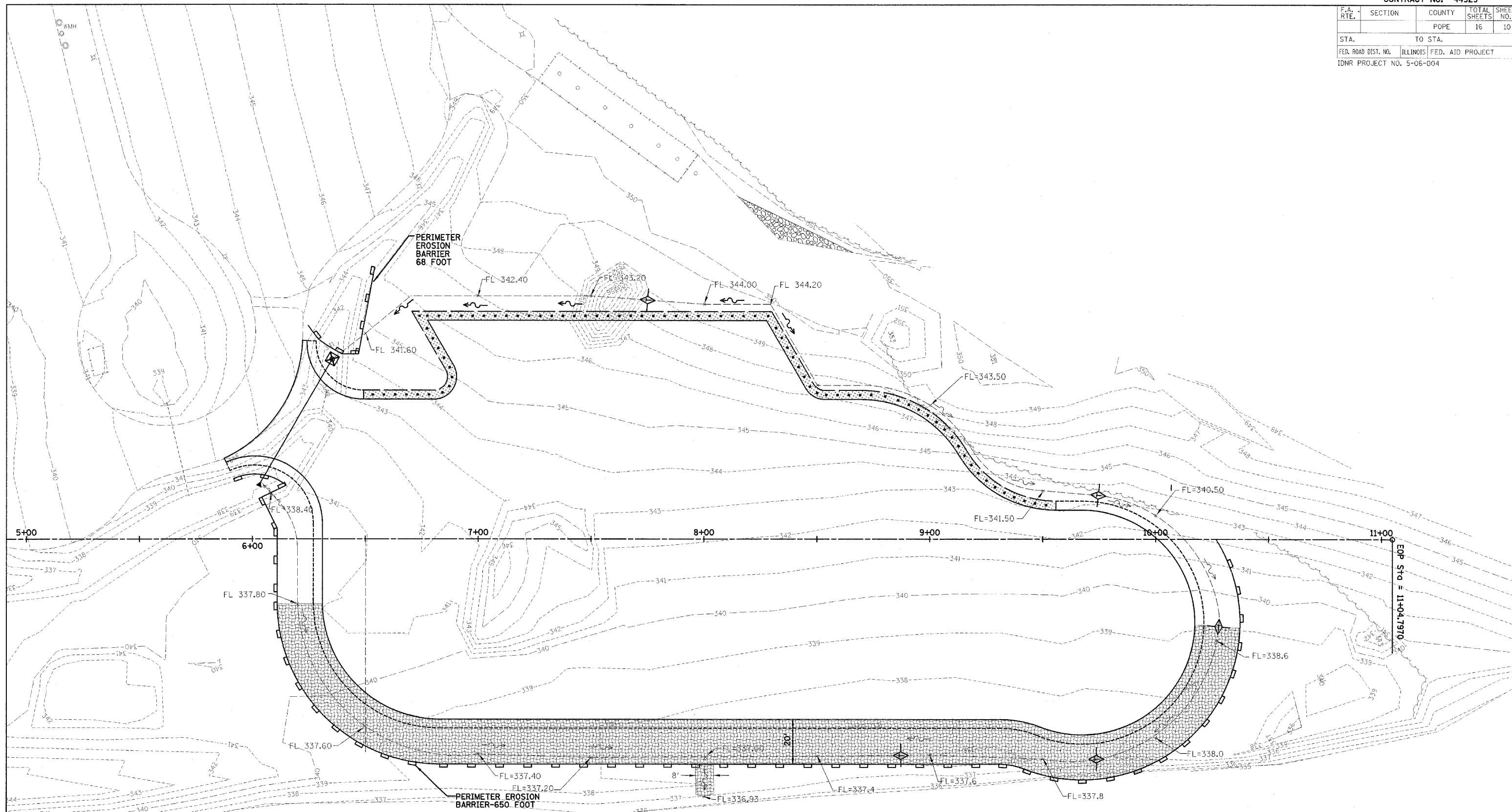
REVISIONS	
DATE	NAME
03/20/07	JJ

ILLINOIS DEPARTMENT OF TRANSPORTATION  
 ELECTRICAL PLAN  
 IDOT / IDNR  
 GOLCONDA MARINA RECREATION AREA

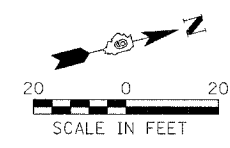
SCALE: VERT. / HORIZ.  
 DATE: 8/17/06

DRAWN BY: MAL  
 CHECKED BY: RGD

F.A. RTE.	SECTION	COUNTY	TOTAL SHEETS	SHEET NO.
		POPE	16	10
STA.		TO STA.		
FED. ROAD DIST. NO.		ILLINOIS FED. AID PROJECT		
IDNR PROJECT NO. 5-06-004				



LEGEND	
	INLET & PIPE PROTECTION
	TEMPORARY DITCH CHECK
	PERIMETER EROSION CONTROL BARRIER
	EROSION CONTROL BLANKET



REVISIONS	
NAME	DATE

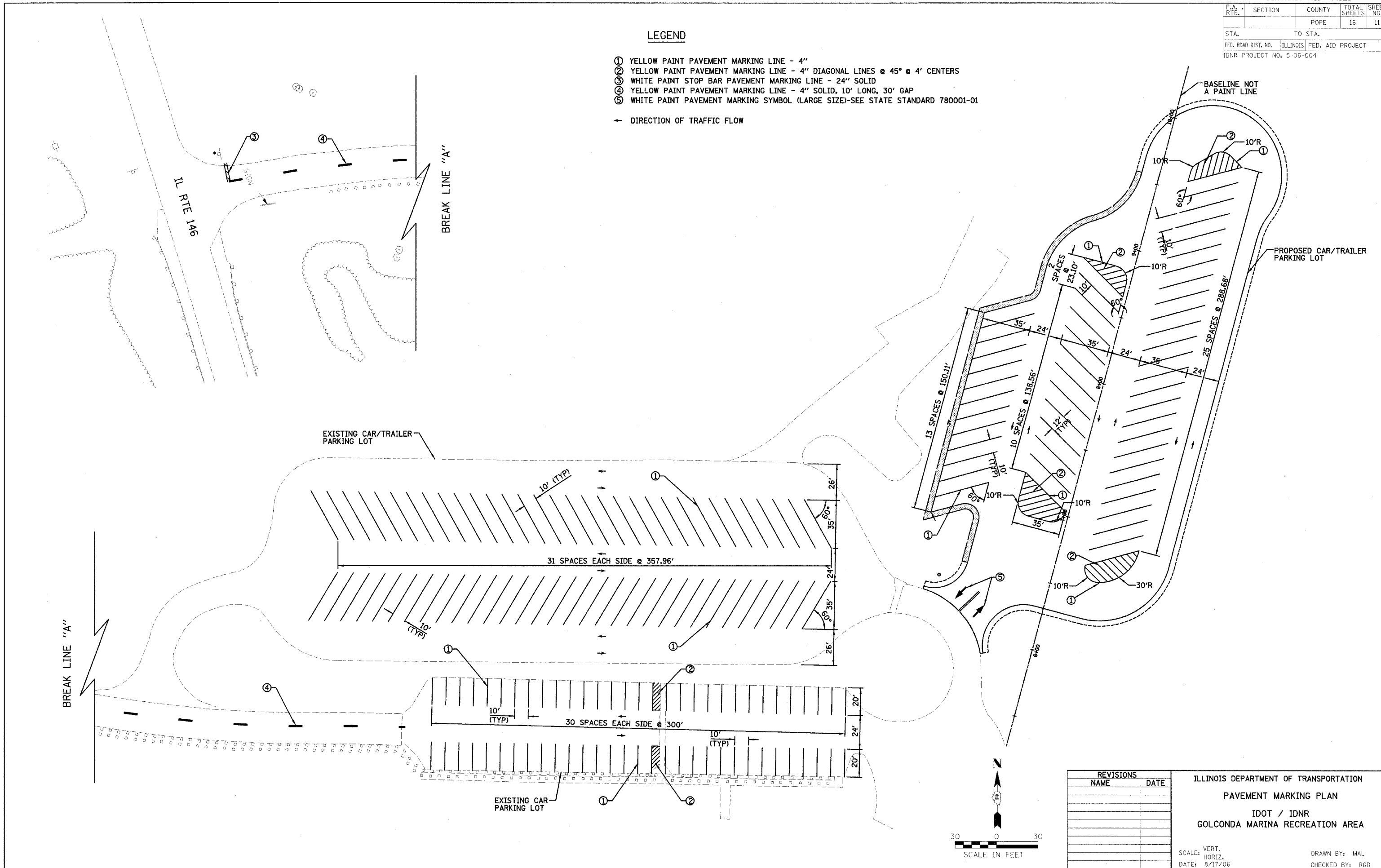
ILLINOIS DEPARTMENT OF TRANSPORTATION  
 PARKING LOT EROSION CONTROL PLAN  
 IDOT / IDNR  
 GOLCONDA MARINA RECREATION AREA

SCALE: VERT.     DRAWN BY: MAL  
 HORIZ.            CHECKED BY: RGD  
 DATE: 8/17/06

F.A. RTE.	SECTION	COUNTY	TOTAL SHEETS	SHEET NO.
		POPE	16	11
STA.	TO STA.			
FED. ROAD DIST. NO.	ILLINOIS	FED. AID PROJECT		
IDNR PROJECT NO. 5-06-004				

**LEGEND**

- ① YELLOW PAINT PAVEMENT MARKING LINE - 4"
  - ② YELLOW PAINT PAVEMENT MARKING LINE - 4" DIAGONAL LINES @ 45° @ 4' CENTERS
  - ③ WHITE PAINT STOP BAR PAVEMENT MARKING LINE - 24" SOLID
  - ④ YELLOW PAINT PAVEMENT MARKING LINE - 4" SOLID, 10' LONG, 30' GAP
  - ⑤ WHITE PAINT PAVEMENT MARKING SYMBOL (LARGE SIZE)-SEE STATE STANDARD 780001-01
- ← DIRECTION OF TRAFFIC FLOW



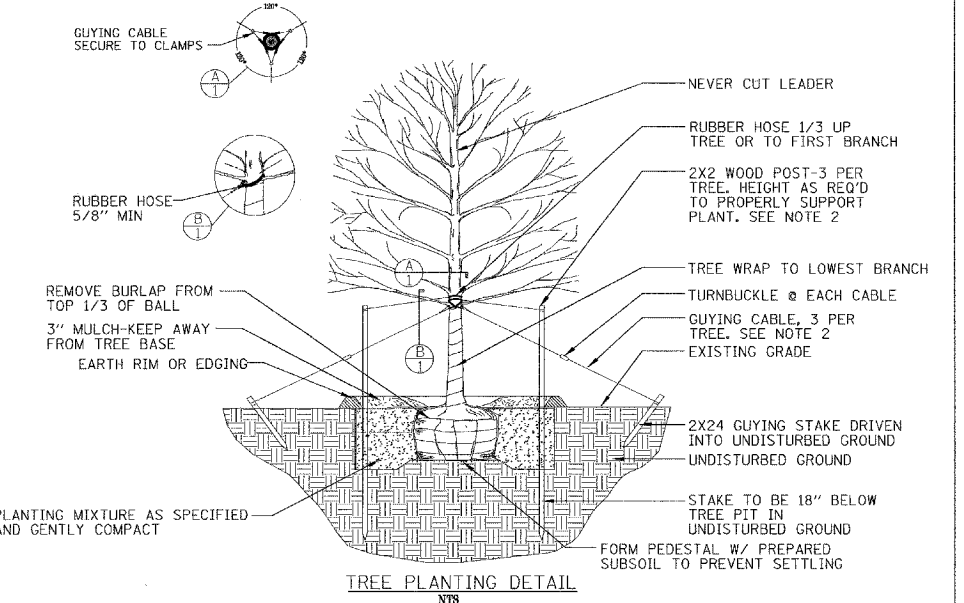
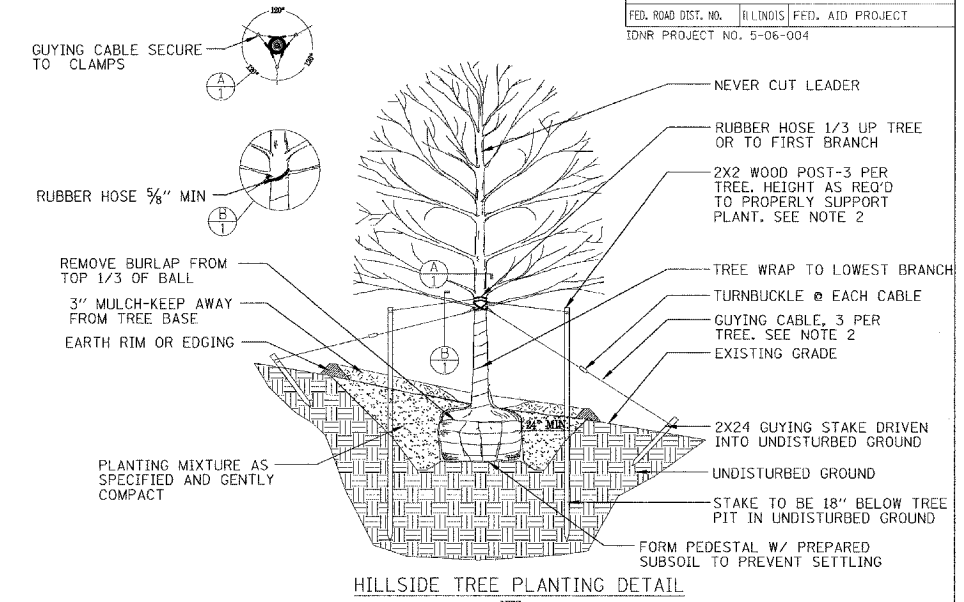
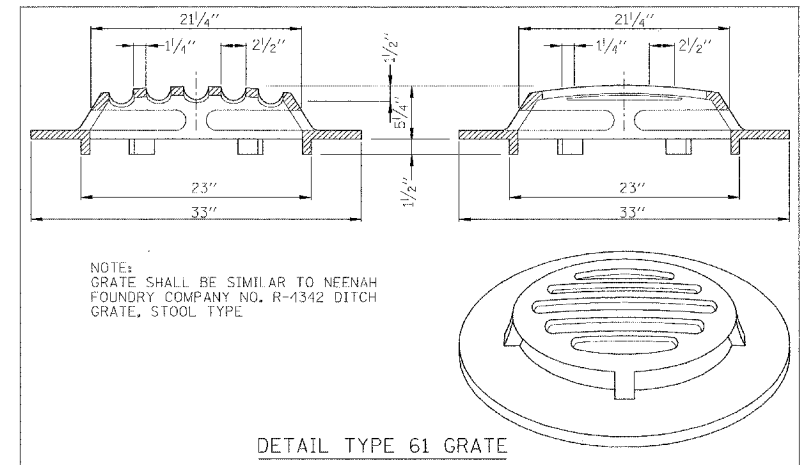
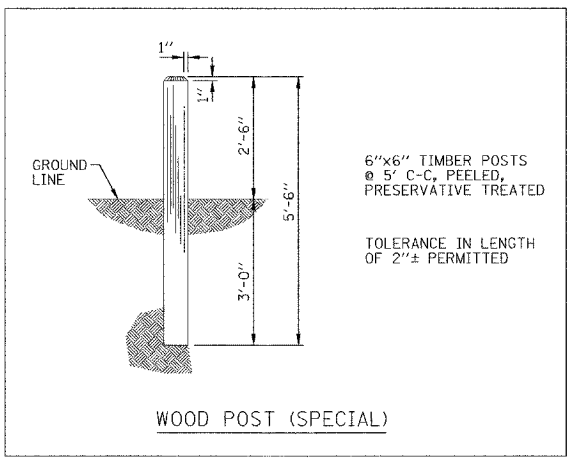
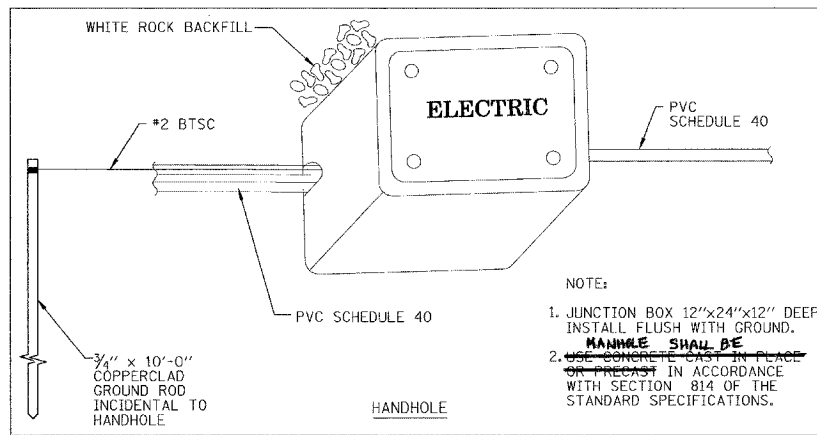
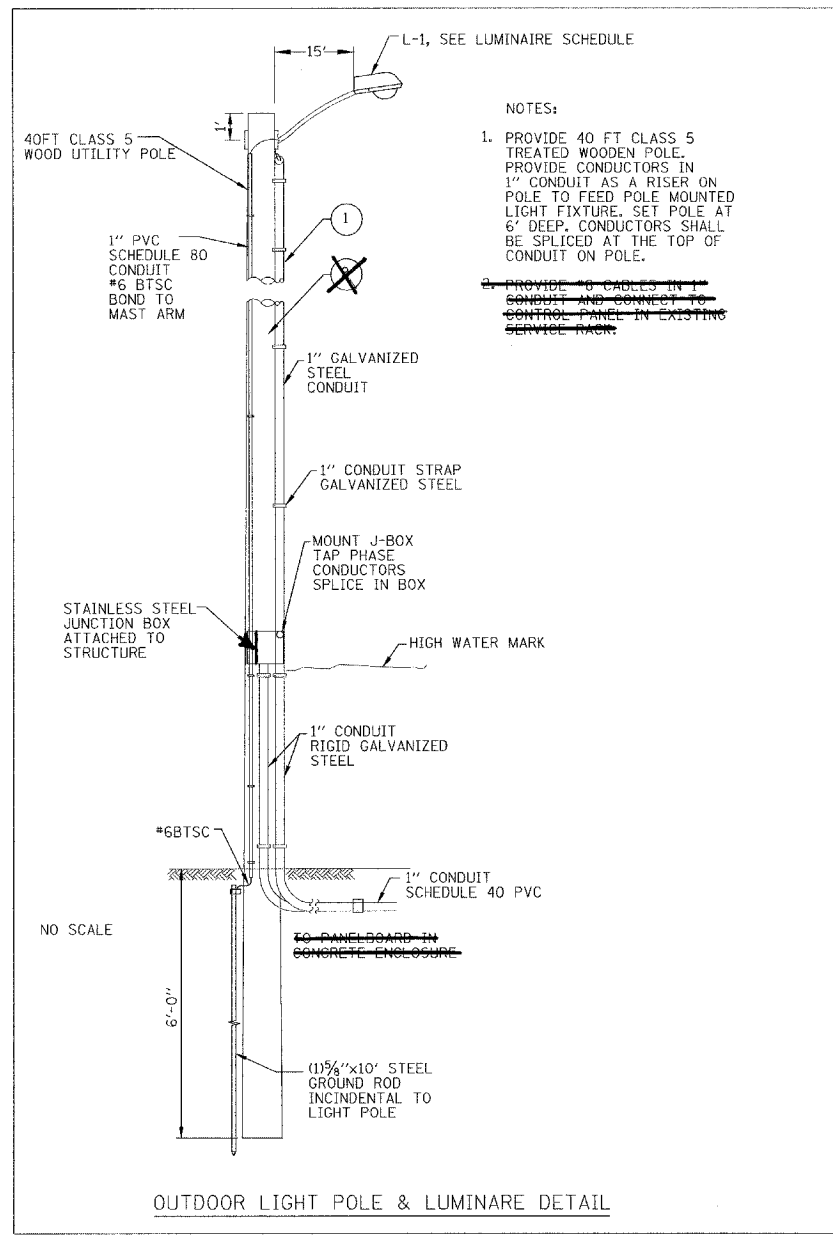
REVISIONS	
NAME	DATE

ILLINOIS DEPARTMENT OF TRANSPORTATION  
 PAVEMENT MARKING PLAN  
 IDOT / IDNR  
 GOLCONDA MARINA RECREATION AREA

SCALE: VERT. 1"=30'  
 HORIZ. 1"=30'  
 DATE: 8/17/06

DRAWN BY: MAL  
 CHECKED BY: RGD

F.A. RTL.	SECTION	COUNTY	TOTAL SHEETS	SHEET NO.
		POPE	16	12
STA.		TO STA.		
FED. ROAD DIST. NO.		ILLINOIS FED. AID PROJECT		
IDNR PROJECT NO. 5-06-004				

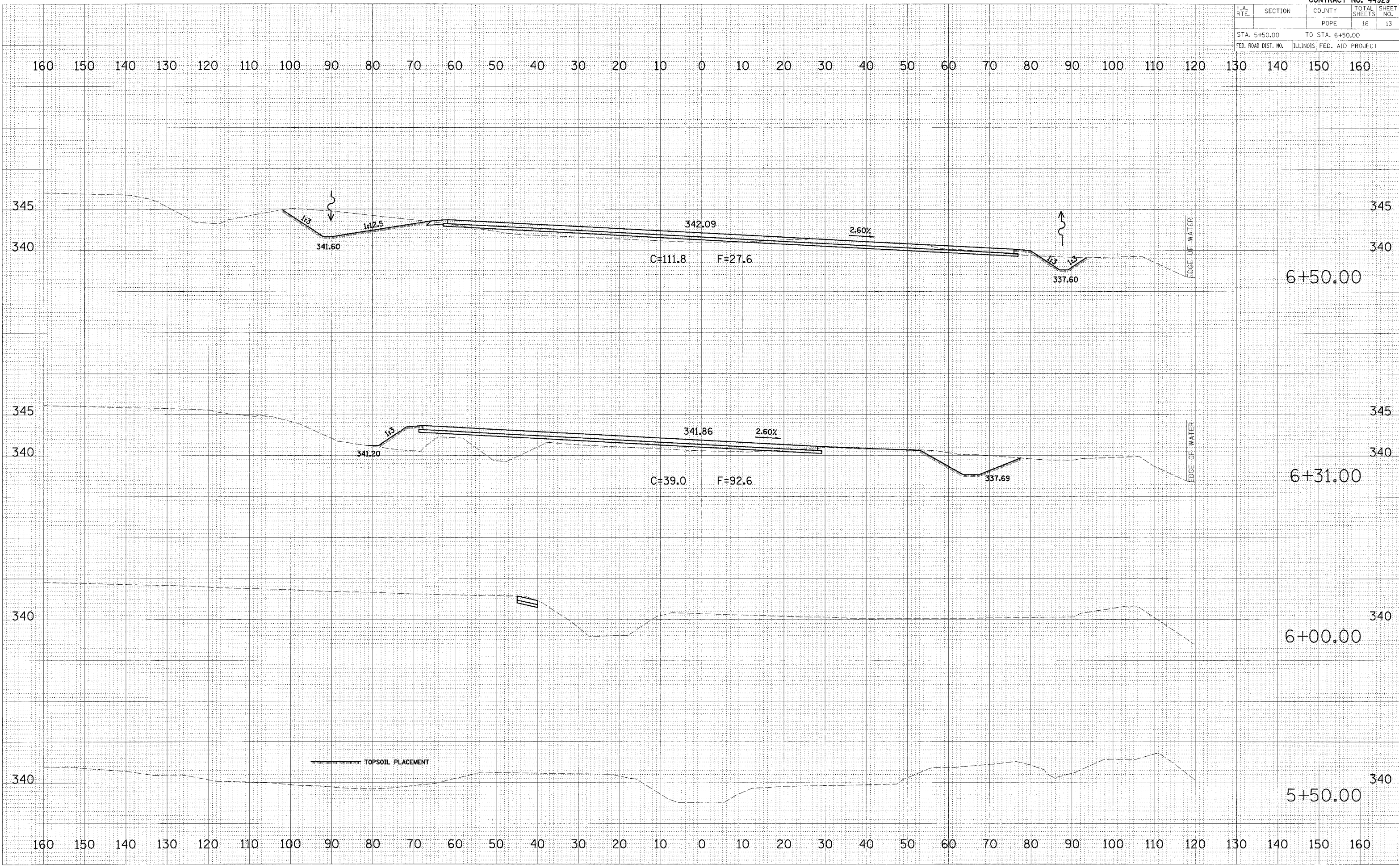


- NOTES:**
- TREE SHALL BE SET 2" HIGHER THAN DEPTH GROWN AT NURSERY.
  - STAKE TREES UNDER 2" CAL. GUY TREES 2" AND OVER.
  - PLANT IN ACCORDANCE WITH SECTION 253 OF THE STANDARD SPECIFICATIONS FOR ROAD AND BRIDGE CONSTRUCTION, JANUARY 1, 2007 EDITION.
  - ALL TREES WILL BE PLANTED ON-SITE AND WITHIN RELATIVELY SHORT DISTANCE FROM THE ROADWAY CONSTRUCTION. IDNR WILL STAKE INDIVIDUAL TREE SPECIES LOCATIONS FOR THE CONTRACTOR WHEN LANDSCAPING WORK IS READY TO BEGIN.
  - BRACING, WRAPPING, MULCH AND ALL DETAILS SHOWN HEREIN SHALL BE INCLUDED IN THE UNIT PRICE BID PER EACH FOR TREES OF THE SIZE AND TYPE NOTED.

REVISIONS		ILLINOIS DEPARTMENT OF TRANSPORTATION MISCELLANEOUS DETAILS IDOT / IDNR GOLCONDA MARINA RECREATION AREA
NAME	DATE	
		SCALE: VERT. HORIZ. DATE: 8/17/06 DRAWN BY: MAL CHECKED BY: RGD

Rev.

F.A. RTE.	SECTION	COUNTY	TOTAL SHEETS	SHEET NO.
		POPE	16	13
STA. 5+50.00		TO STA. 6+50.00		
FED. ROAD DIST. NO.		ILLINOIS FED. AID PROJECT		



DATE	BY

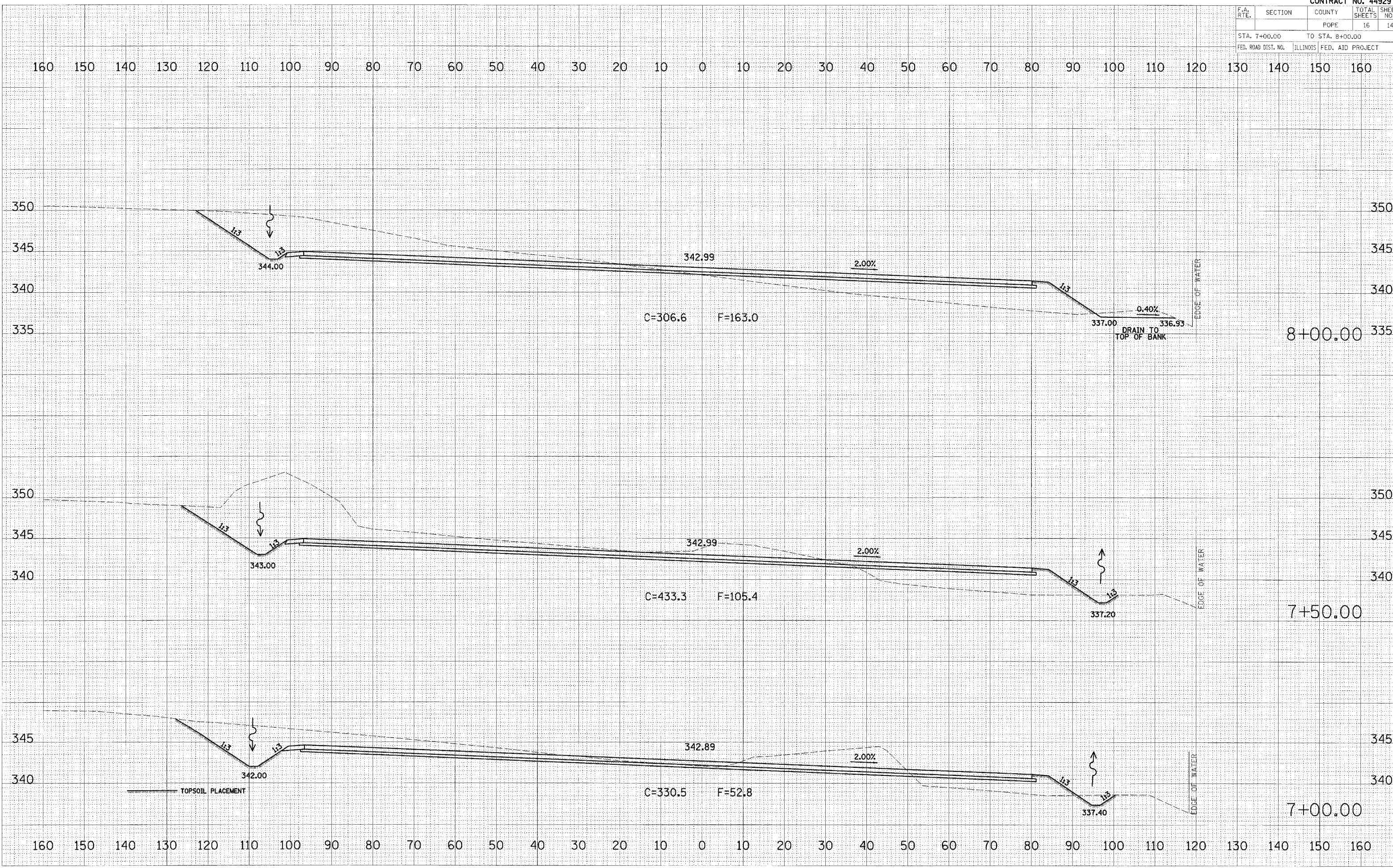
FINAL SURVEYED PLOTTED  
NOTE BOOK AREAS AT  
NO. AREAS CHECKED

DATE	BY

ORIGINAL SURVEYED PLOTTED  
NOTE BOOK AREAS AT  
NO. AREAS CHECKED

PLOT DATE = #DATE#  
FILE NAME = #FILE#  
PLOT SCALE = #SCALE#  
USER NAME = #USER#

F.A. RTE.	SECTION	COUNTY	TOTAL SHEETS	SHEET NO.
		POPE	16	14
STA. 7+00.00		TO STA. 8+00.00		
FED. ROAD DIST. NO.		ILLINOIS FED. AID PROJECT		

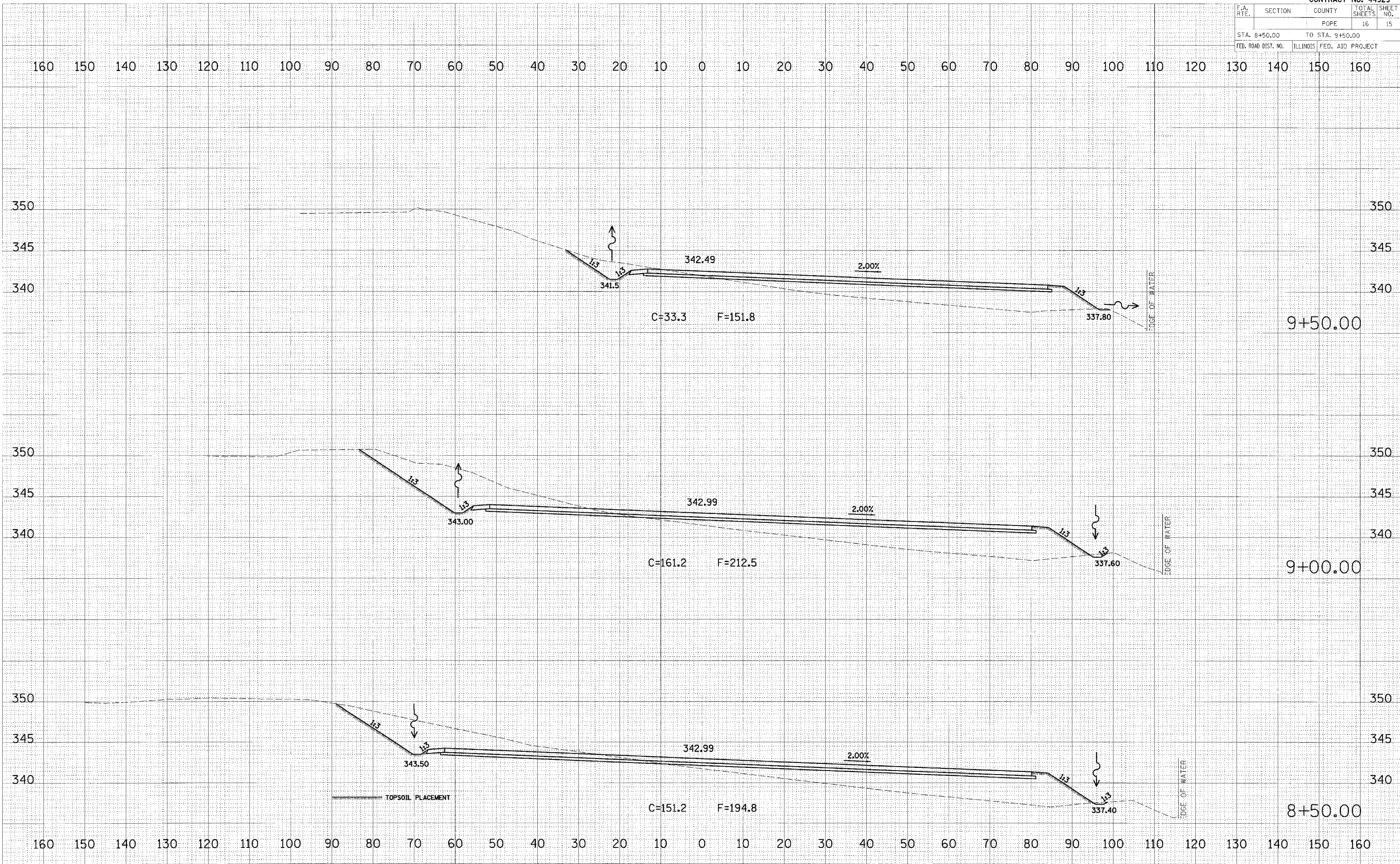


DATE: \_\_\_\_\_  
 BY: \_\_\_\_\_  
 SURVEYED: \_\_\_\_\_  
 PLOTTED: \_\_\_\_\_  
 CHECKED: \_\_\_\_\_  
 FINAL SURVEY: \_\_\_\_\_  
 ROUTE BOOK: \_\_\_\_\_  
 NO.: \_\_\_\_\_

DATE: \_\_\_\_\_  
 BY: \_\_\_\_\_  
 SURVEYED: \_\_\_\_\_  
 PLOTTED: \_\_\_\_\_  
 CHECKED: \_\_\_\_\_  
 ORIGINAL SURVEY: \_\_\_\_\_  
 NO.: \_\_\_\_\_

PLOT DATE = ACUTE\*  
 FILE NAME = BFILE\$  
 PLOT SCALE = ESCALE\$  
 USER NAME = BUSER\*

F.A. RTE.	SECTION	COUNTY	TOTAL SHEETS	SHEET NO.
		POPE	16	15
STA. 8+50.00		TO STA. 9+50.00		
FED. ROAD DIST. NO.	ILLINOIS FED. AID PROJECT			

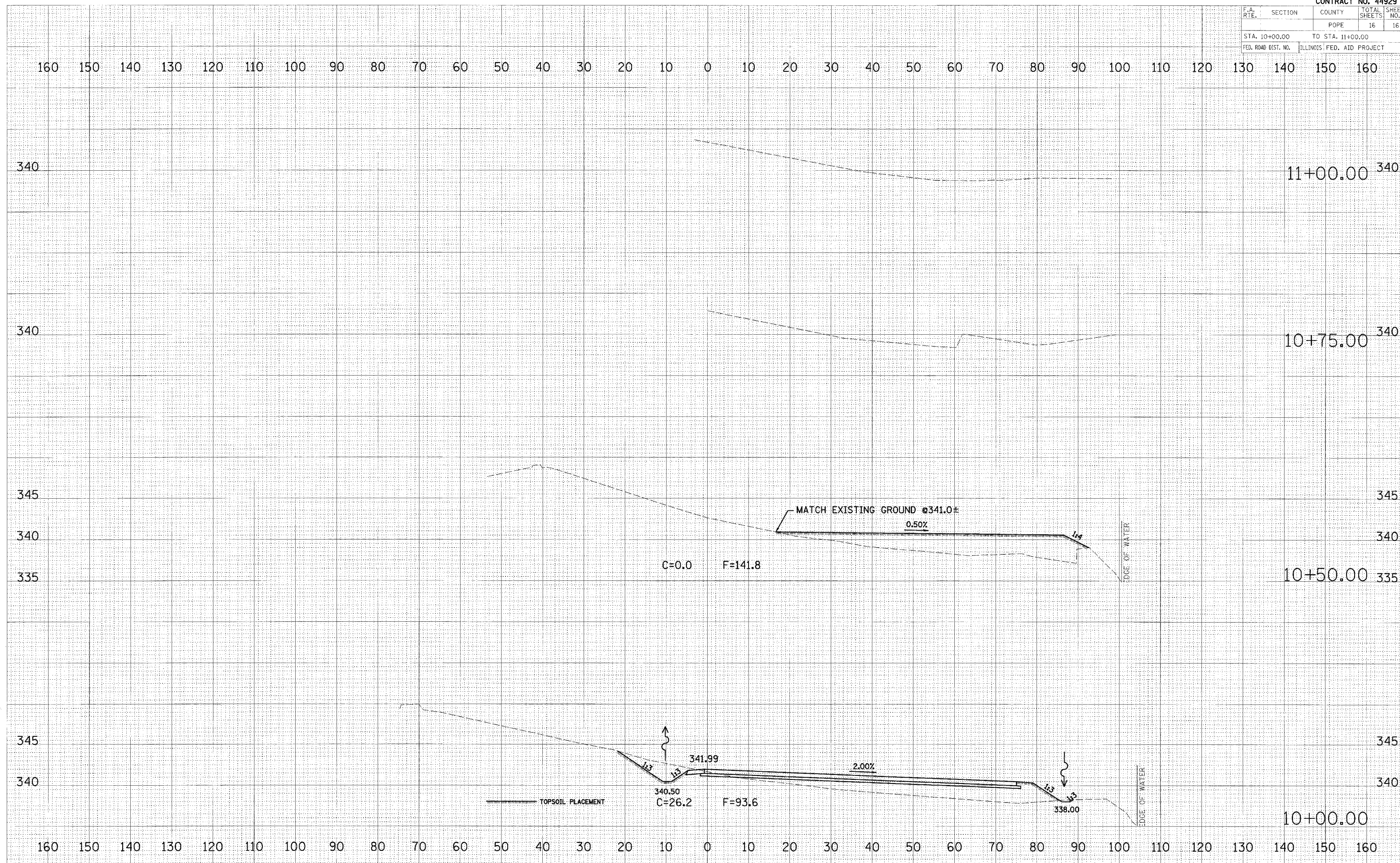


DATE: \_\_\_\_\_ BY: \_\_\_\_\_  
 FINAL SURVEY: \_\_\_\_\_  
 PLOTTED: \_\_\_\_\_  
 MAT' BOOK: \_\_\_\_\_  
 DATE: \_\_\_\_\_  
 AREA CHECKED: \_\_\_\_\_

DATE: \_\_\_\_\_ BY: \_\_\_\_\_  
 ORIGINAL SURVEY: \_\_\_\_\_  
 PLOTTED: \_\_\_\_\_  
 MAT' BOOK: \_\_\_\_\_  
 DATE: \_\_\_\_\_  
 AREA CHECKED: \_\_\_\_\_

DATE: \_\_\_\_\_ BY: \_\_\_\_\_  
 ORIGINAL SURVEY: \_\_\_\_\_  
 PLOTTED: \_\_\_\_\_  
 MAT' BOOK: \_\_\_\_\_  
 DATE: \_\_\_\_\_  
 AREA CHECKED: \_\_\_\_\_

F.A. RTE.	SECTION	COUNTY	TOTAL SHEETS	SHEET NO.
		POPE	16	16
STA. 10+00.00		TO STA. 11+00.00		
FED. ROAD DIST. NO.		ILLINOIS FED. AID PROJECT		



DATE: \_\_\_\_\_ BY: \_\_\_\_\_  
 SURVEYED: \_\_\_\_\_  
 SURVEY: \_\_\_\_\_  
 BOOK: \_\_\_\_\_  
 SHEET: \_\_\_\_\_  
 NO.: \_\_\_\_\_

DATE: \_\_\_\_\_ BY: \_\_\_\_\_  
 SURVEYED: \_\_\_\_\_  
 SURVEY: \_\_\_\_\_  
 BOOK: \_\_\_\_\_  
 SHEET: \_\_\_\_\_  
 NO.: \_\_\_\_\_

PLOT DATE = #DATE#  
 FILE NAME = #FILE#  
 PLOT SCALE = #SCALE#  
 USER NAME = #USER#