

**STATE OF ILLINOIS**  
**DEPARTMENT OF TRANSPORTATION**  
**DIVISION OF HIGHWAYS**

**IDOT /IDNR STATEWIDE**  
**REDWING SLOUGH STATE NATURAL AREA**

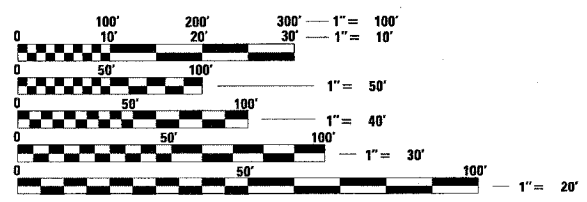
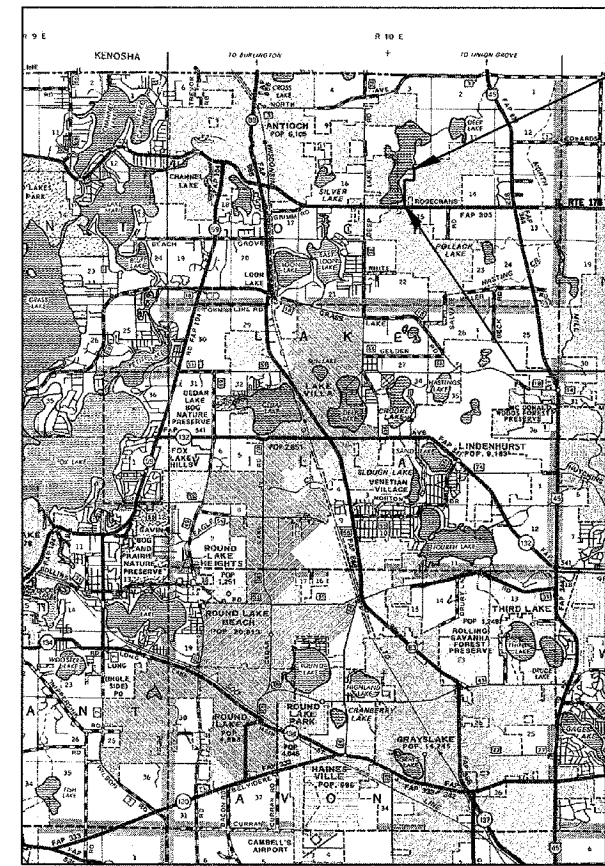
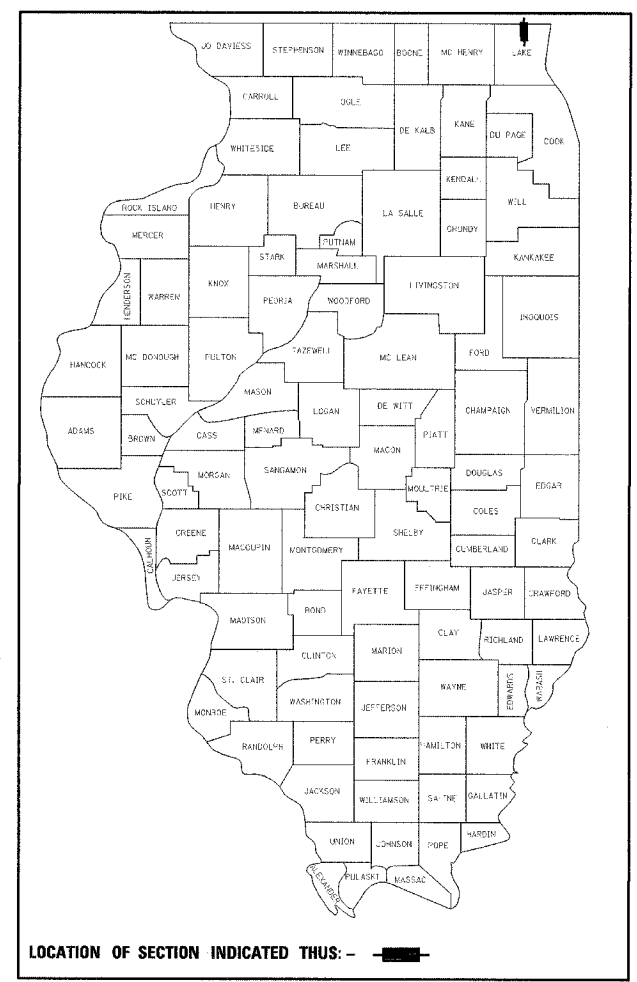
**ENTRANCE ROAD 2007**  
**LAKE COUNTY**  
**JOB NO. C-30-005-07**  
**IDNR PROJECT NO. 2-06-003**  
**REDWING SLOUGH**

**INDEX OF SHEETS**

- 1 COVER SHEET
- 2 SUMMARY OF QUANTITIES
- 3 TYPICAL SECTIONS & LEGEND
- 4 SCHEDULE OF QUANTITIES
- 5 CONTROL SURVEY TIES, BENCHMARKS & GENERAL NOTES
- 6-10 PLAN & PROFILES
- 11-12 EROSION CONTROL PLANS
- 13-14 MISCELLANEOUS DETAILS
- 15-26 CROSS SECTIONS

**STATE STANDARDS**

- 000001-04
- 280001-03
- 542301-01
- 602306-01
- 602601-01
- 665001-01
- 701001-01
- 701201-02
- 701301-02
- 701306-01
- 701311-02
- 701326-02
- 702001-06
- 720001
- BLR-17-3



FULL SIZE PLANS HAVE BEEN PREPARED USING STANDARD ENGINEERING SCALES. REDUCED SIZED PLANS WILL NOT CONFORM TO STANDARD SCALES. IN MAKING MEASUREMENTS ON REDUCED PLANS, THE ABOVE SCALES MAY BE USED.

J.U.L.I.E.  
 JOINT UTILITY LOCATION INFORMATION FOR EXCAVATION  
 1-800-892-0123

**CONTRACT NO. 44939**

**LOCATION MAP**  
 GROSS LENGTH = 2593.45 FT. = 0.491 MILES  
 NET LENGTH = 2593.45 FT. = 0.491 MILES



*Philip J. Matone* 2/9/07  
 SIGNATURE  
 EXPIRATION DATE NOV. 30, 2007

**STATE OF ILLINOIS**  
**DEPARTMENT OF TRANSPORTATION**  
**DIVISION OF HIGHWAYS**

SUBMITTED March 1, 20 07  
*Eric E. Harny*  
 DEPUTY DIRECTOR OF HIGHWAYS.

March 23, 20 07  
*Eric E. Harny*  
 ENGINEER OF DESIGN AND ENVIRONMENT

March 23, 20 07  
*Milton R. See*  
 DIRECTOR OF HIGHWAYS, CHIEF ENGINEER

**PRINTED BY THE AUTHORITY**  
**OF THE STATE OF ILLINOIS**