

F.A.P. RTE.	SECTION	COUNTY	TOTAL SHEETS	SHEET NO.
866	2005-057TS	LAKE	20	10
STA. _____		TO STA. _____		
FED. ROAD DIST. NO. _____ ILLINOIS FED. AID PROJECT				
CONTRACT NO. 60A46				

**SCHEDULE OF QUANTITIES**

ITEM	UNIT	QUANTITY
ENGINEER'S FIELD OFFICE, TYPE A	CAL MO	1
GROUNDING EXISTING HANDHOLE FRAME AND COVER	EACH	5
MAINTENANCE OF EXISTING TRAFFIC SIGNAL INSTALLATION	EACH	1
FULL ACTUATED CONTROLLER AND TYPE IV CABINET, SPECIAL	EACH	1
TRANSCIEVER, FIBER OPTIC	EACH	1
ELECTRIC CABLE IN CONDUIT, SERVICE, NO. 6 2C	FOOT	45
ELECTRIC CABLE IN CONDUIT, GROUNDING, NO.6 1C	FOOT	976
TRAFFIC SIGNAL BACKPLATE, LOUVERED, ALUMINUM	EACH	8
REMOVE EXISTING TRAFFIC SIGNAL EQUIPMENT	EACH	1
SIGNAL HEAD, LED, 1-FACE, 3-SECTION, MAST ARM MOUNTED	EACH	4
SIGNAL HEAD, LED, 1-FACE, 5-SECTION, MAST ARM MOUNTED	EACH	4
SIGNAL HEAD, LED, 2-FACE, 1-3 SECTION, 1-5 SECTION, BRACKET MOUNTED	EACH	4
PEDESTRIAN SIGNAL HEAD, LED, 1-FACE, BRACKET MOUNTED	EACH	2
PEDESTRIAN SIGNAL HEAD, LED, 2-FACE, BRACKET MOUNTED	EACH	1
SERVICE INSTALLATION, POLE-MOUNTED	EACH	1

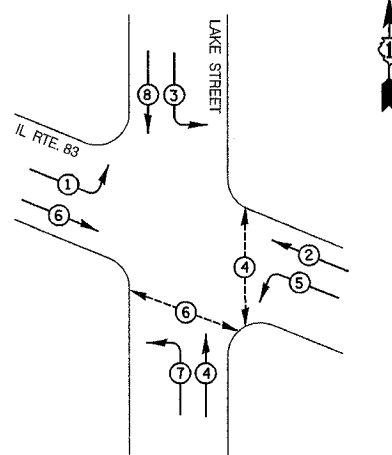
**CONSTRUCTION NOTES:**

- REMOVE EXISTING CONTROLLER AND CABINET. INSTALL NEW CONTROLLER AND TYPE IV CABINET, SPECIAL, RE-USE EXISTING FOUNDATION. RELOCATE EXISTING EMERGENCY VEHICLE PRIORITY SYSTEM, PHASING UNIT TO NEW CONTROLLER CABINET. RELOCATION OF THE EXISTING EMERGENCY PRIORITY SYSTEM SHALL BE INCLUDED IN THE NEW CONTROLLER UNIT PRICE.
- REMOVE EXISTING SIGNAL HEAD, 1-FACE, 3-SECTION. INSTALL NEW SIGNAL HEAD, L.E.D. 1-FACE, 3-SECTION, MAST ARM MOUNTED, AND TRAFFIC SIGNAL BACKPLATE.
- REMOVE EXISTING SIGNAL HEAD, 1-FACE, 5-SECTION. INSTALL NEW SIGNAL HEAD, L.E.D. 1-FACE, 5-SECTION, MAST ARM MOUNTED, AND TRAFFIC SIGNAL BACKPLATE.
- REMOVE EXISTING SIGNAL HEAD, 2-FACE, 1-3 SECTION, 1-5 SECTION, BRACKET MOUNTED. INSTALL NEW SIGNAL HEAD, L.E.D., 2-FACE, 1-3 SECTION, 1-5 SECTION BRACKET MOUNTED.
- REMOVE EXISTING PEDESTRIAN SIGNAL HEAD, 1-FACE. INSTALL NEW PEDESTRIAN SIGNAL HEAD, L.E.D., 1-FACE, BRACKET MOUNTED.
- REMOVE EXISTING PEDESTRIAN SIGNAL HEAD, 2-FACE. INSTALL NEW PEDESTRIAN SIGNAL HEAD, L.E.D., 2-FACE, BRACKET MOUNTED.
- RE-USE EXISTING TRAFFIC SIGNAL CABLE.

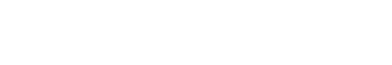
**CABLE PLAN LEGEND**

EXISTING	PROPOSED	EXISTING	PROPOSED

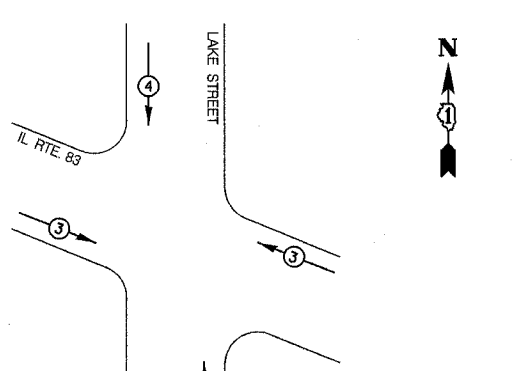
**CONTROLLER SEQUENCE**



**PHASE DESIGNATION DIAGRAM**

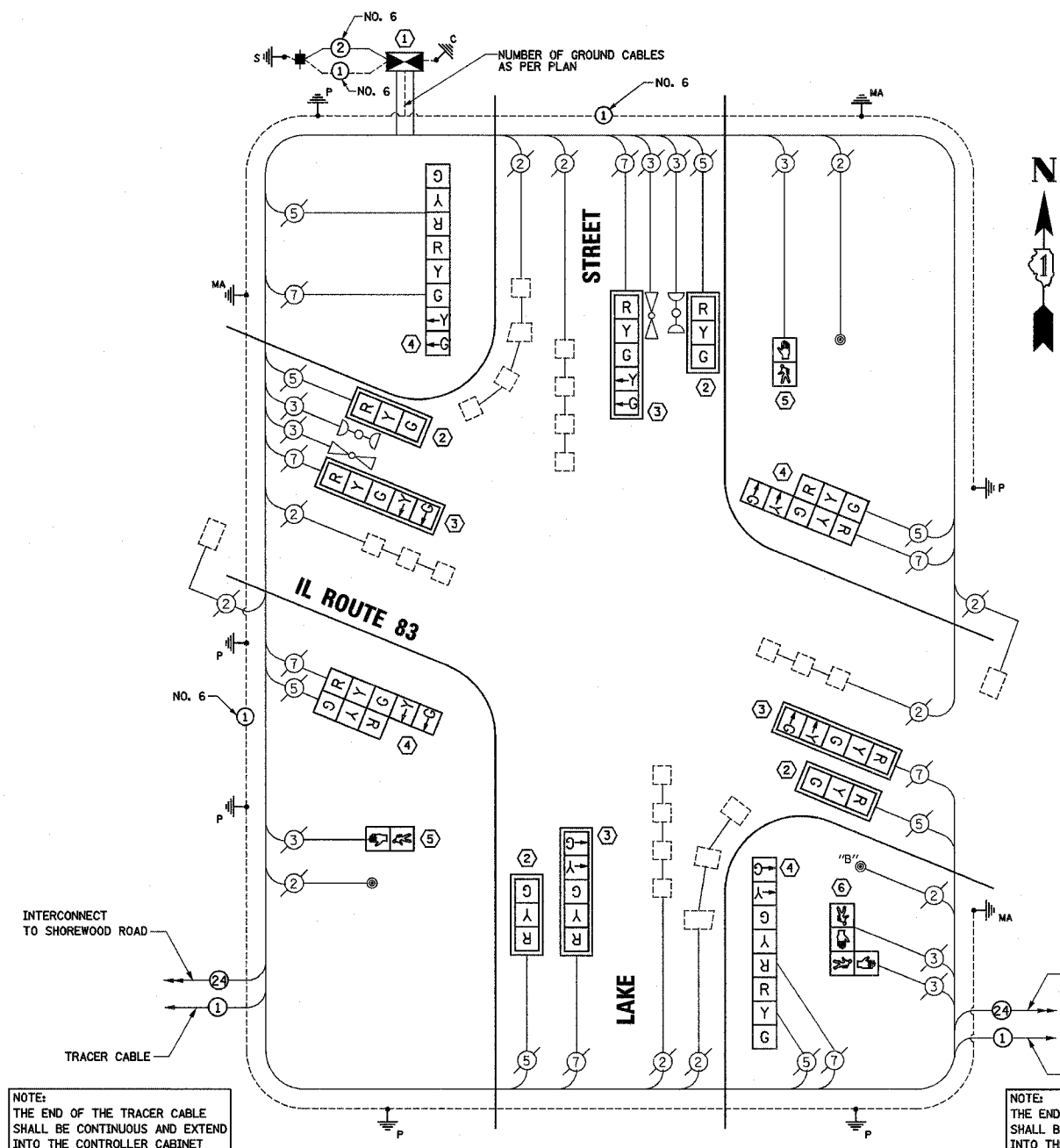


**EMERGENCY VEHICLE PREEMPTION SEQUENCE**



EXISTING EMERGENCY VEHICLE PREEMPTORS	
EMERGENCY VEHICLE PREEMPTOR	3
MOVEMENT	

- LEGEND**
- DUAL ENTRY PHASE
  - SINGLE ENTRY PHASE
  - OVERLAP
  - PEDESTRIAN PHASE
  - \* NUMBER REFERS TO ASSOCIATED PHASE



NOTE: THE END OF THE TRACER CABLE SHALL BE CONTINUOUS AND EXTEND INTO THE CONTROLLER CABINET

NOTE: THE END OF THE TRACER CABLE SHALL BE CONTINUOUS AND EXTEND INTO THE CONTROLLER CABINET

NOTE: THE TRAFFIC SIGNAL CONTROL EQUIPMENT FOR THIS PROJECT SHALL BE "EAGLE" TO MATCH THE EXISTING ADJACENT SYSTEM.

PUSH-BUTTON NOTES:  
PUSH-BUTTON "B" SHALL PLACE A CALL IN PHASES 4 AND 6

I.D.O.T. TRAFFIC SIGNAL INSTALLATION ELECTRICAL SERVICE REQUIREMENTS					TOTAL WATTAGE
TYPE	NO. LAMPS	WATTAGE INCAND.	WATTAGE LED	X% OPERATION	
SIGNAL (RED)	16	135	17	0.50	136.0
(YELLOW)	16	135	25	0.25	100.0
(GREEN)	16	135	15	0.25	60.0
ARROW	16	135	12	0.10	19.2
PED. SIGNAL	4	90	25	1.00	100.0
CONTROLLER	1	100	100	1.00	100.0
TOTAL =					515.2

ENERGY COSTS - BILLED TO: ILLINOIS DEPT. OF TRANSPORTATION  
201 WEST CENTER COURT  
SCHALMBURG, ILLINOIS 60196-1096

ENERGY SUPPLY - CONTACT: JUDY SCHOMER  
PHONE: (847) 870-2063  
COMPANY: COM ED

FOUNDATION (DEPTH)	(FT.) (m)	CABLE SLACK	(FT.) (m)	VERTICAL	(FT.) (m)
TYPE A - POST	4 (1.2)	HANDHOLE	6.5 (2.0)	ALL FOUNDATIONS	3.5 (1.0)
D - FOUNDATION	4 (1.2)	DOUBLE HANDHOLE	13 (4.0)	MAST ARM (L) POLE	20' + L - 2 =
C - M. ARM POLE		SIGNAL POST	2 (1.0)	(6m+L-0.6m)=	
24" (600mm)	10 (3.0)	CONTROLLER CAB.	1 (0.5)	BRACKET MOUNTED	13 (4.0)
30" (750mm)	15 (4.6)	FIBER OPTIC	13 (4.0)	PED. PUSHBUTTON	4 (1.2)
		ELECTRIC SERVICE	1 (0.5)	ELECTRIC SERVICE	13.5 (4.1)
		GROUND CABLE	1 (0.5)	SERVICE TO GROUND	13.5 (4.1)
				POST MOUNTED	6 (1.8)

**SETON ENGINEERING**  
SERVICE CORPORATION  
CIVIL ENGINEERS

19 S. BOWELL STREET  
PALATINE, ILLINOIS 60067  
VOICE: 847-776-7200 FAX: 847-776-7239

REVISIONS	
NAME	DATE

ILLINOIS DEPARTMENT OF TRANSPORTATION  
CABLE PLAN, PHASE DESIGNATION DIAGRAM,  
EMERGENCY VEHICLE PREEMPTION SEQUENCE  
AND SCHEDULE OF QUANTITIES  
IL ROUTE 83 AT  
LAKE STREET  
GRAYSLAKE, ILLINOIS

SCALE: N.T.S.  
DATE: 5-26-06

DRAWN BY: CWC  
DESIGNED BY: VO  
CHECKED BY: TJM