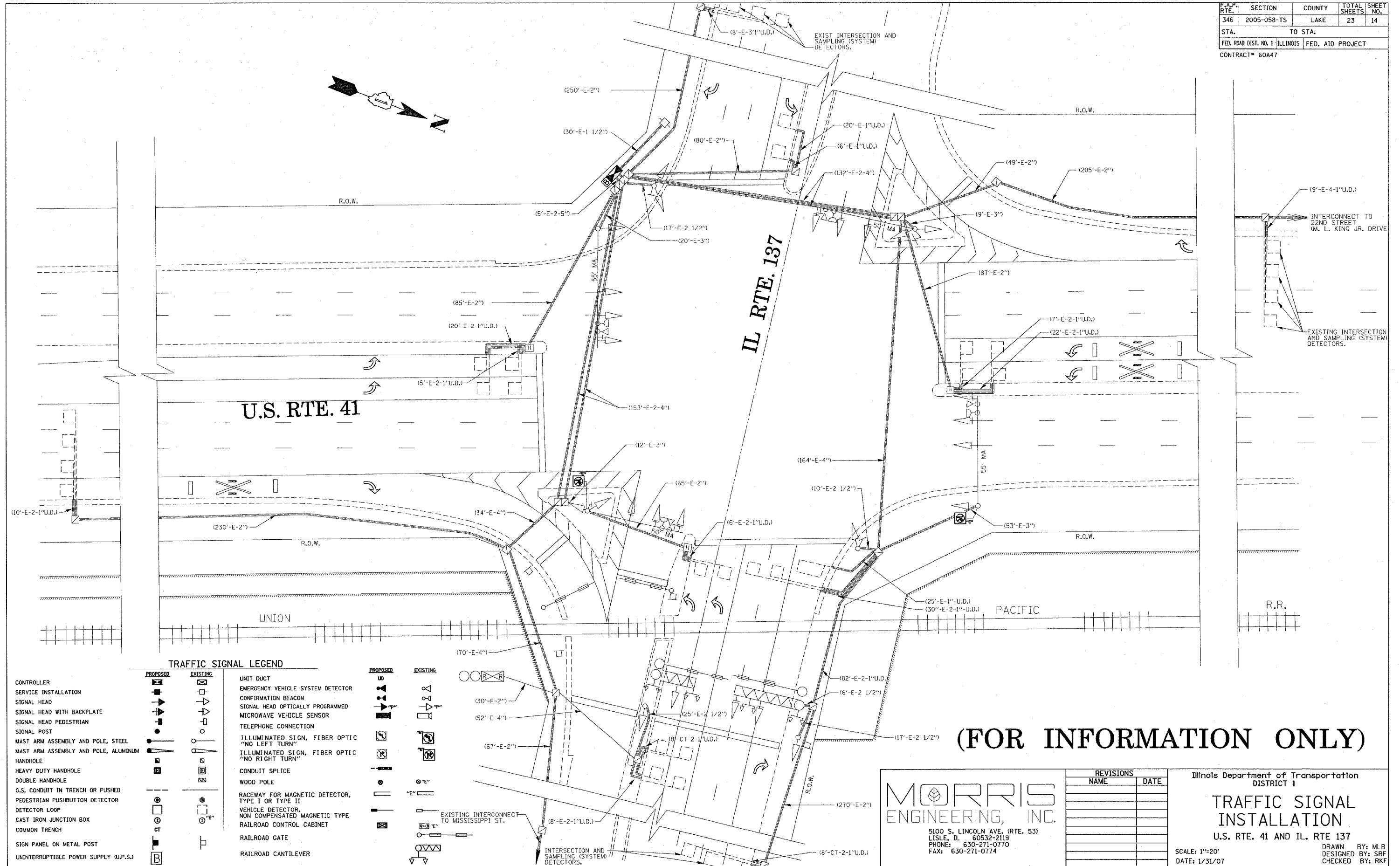


F.A.P. RTE.	SECTION	COUNTY	TOTAL SHEETS	SHEET NO.
346	2005-058-TS	LAKE	23	14
STA.		TO STA.		
FED. ROAD DIST. NO. 1		ILLINOIS	FED. AID PROJECT	
CONTRACT# 60A47				



U.S. RTE. 41

IL RTE. 137

PACIFIC

TRAFFIC SIGNAL LEGEND

PROPOSED	EXISTING	DESCRIPTION
[Symbol]	[Symbol]	CONTROLLER
[Symbol]	[Symbol]	SERVICE INSTALLATION
[Symbol]	[Symbol]	SIGNAL HEAD
[Symbol]	[Symbol]	SIGNAL HEAD WITH BACKPLATE
[Symbol]	[Symbol]	SIGNAL HEAD PEDESTRIAN
[Symbol]	[Symbol]	SIGNAL POST
[Symbol]	[Symbol]	MAST ARM ASSEMBLY AND POLE, STEEL
[Symbol]	[Symbol]	MAST ARM ASSEMBLY AND POLE, ALUMINUM
[Symbol]	[Symbol]	HANDHOLE
[Symbol]	[Symbol]	HEAVY DUTY HANDHOLE
[Symbol]	[Symbol]	DOUBLE HANDHOLE
[Symbol]	[Symbol]	G.S. CONDUIT IN TRENCH OR PUSHED
[Symbol]	[Symbol]	PEDESTRIAN PUSHBUTTON DETECTOR
[Symbol]	[Symbol]	DETECTOR LOOP
[Symbol]	[Symbol]	CAST IRON JUNCTION BOX
[Symbol]	[Symbol]	COMMON TRENCH
[Symbol]	[Symbol]	SIGN PANEL ON METAL POST
[Symbol]	[Symbol]	UNINTERRUPTIBLE POWER SUPPLY (U.P.S.)
[Symbol]	[Symbol]	UNIT DUCT
[Symbol]	[Symbol]	EMERGENCY VEHICLE SYSTEM DETECTOR
[Symbol]	[Symbol]	CONFIRMATION BEACON
[Symbol]	[Symbol]	SIGNAL HEAD OPTICALLY PROGRAMMED
[Symbol]	[Symbol]	MICROWAVE VEHICLE SENSOR
[Symbol]	[Symbol]	TELEPHONE CONNECTION
[Symbol]	[Symbol]	ILLUMINATED SIGN, FIBER OPTIC "NO LEFT TURN"
[Symbol]	[Symbol]	ILLUMINATED SIGN, FIBER OPTIC "NO RIGHT TURN"
[Symbol]	[Symbol]	CONDUIT SPLICE
[Symbol]	[Symbol]	WOOD POLE
[Symbol]	[Symbol]	RACEWAY FOR MAGNETIC DETECTOR, TYPE I OR TYPE II
[Symbol]	[Symbol]	VEHICLE DETECTOR, NON COMPENSATED MAGNETIC TYPE
[Symbol]	[Symbol]	RAILROAD CONTROL CABINET
[Symbol]	[Symbol]	RAILROAD GATE
[Symbol]	[Symbol]	RAILROAD CANTILEVER

(FOR INFORMATION ONLY)

MORRIS ENGINEERING, INC.
 5100 S. LINCOLN AVE. (RTE. 53)
 Lisle, IL 60532-2119
 PHONE: 630-271-0770
 FAX: 630-271-0774

REVISIONS	
NAME	DATE

Illinois Department of Transportation
 DISTRICT 1
TRAFFIC SIGNAL INSTALLATION
 U.S. RTE. 41 AND IL RTE 137
 SCALE: 1"=20'
 DATE: 1/31/07
 DRAWN BY: MLB
 DESIGNED BY: SRF
 CHECKED BY: RKF