

F.A.P. RTE.	SECTION	COUNTY	TOTAL SHEETS	SHEET NO.
336	112 RS-5	MCHENRY	34	1

DISTRICT ONE-PLAN PREPARATION ENGINEER K. ENG / LONG TRAN (847) 705-4240

STATE OF ILLINOIS
DEPARTMENT OF TRANSPORTATION
DIVISION OF HIGHWAYS

**PROPOSED
HIGHWAY PLANS**
F.A.P. 336: IL 31 (FRONT STREET)
BULL VALLEY RD. TO MCCULLOM LAKE RD.
SECTION: 112 RS-5
RESURFACING (MAINTENANCE)
MCHENRY COUNTY
C-91-426-06

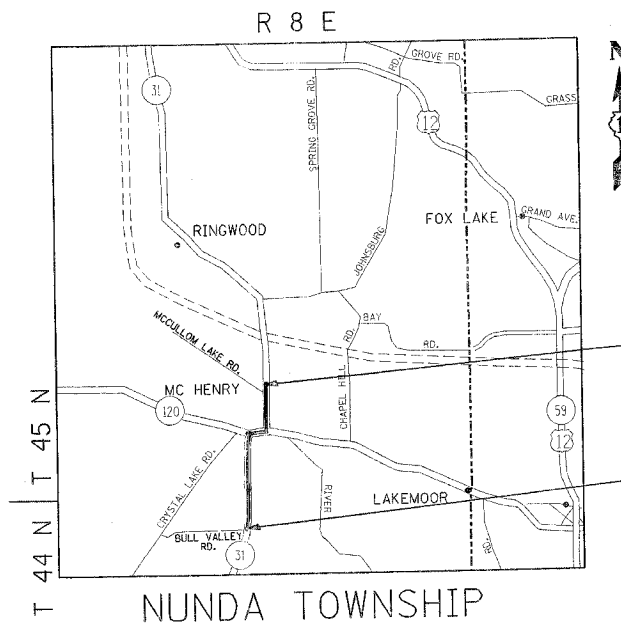
FOR INDEX OF SHEETS, SEE SHEET NO. 2

IMPROVEMENT IS LOCATED IN THE CITY OF MCHENRY

D-91-426-06



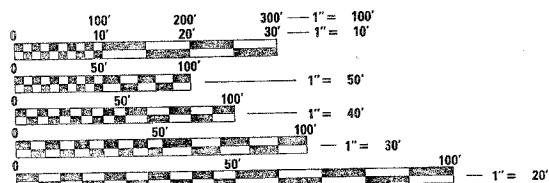
OMISSION:
STA. 68+08 TO 137+30
STA. 151+16 TO 169+96



TRAFFIC DATA
SPEED LIMIT: 30-45 MPH
2005 ADT: 18,100

IMPROVEMENT ENDS
STA. 173+71

IMPROVEMENT BEGINS
STA. 31+92



FULL SIZE PLANS HAVE BEEN PREPARED USING STANDARD ENGINEERING SCALES. REDUCED SIZED PLANS WILL NOT CONFORM TO STANDARD SCALES. IN MAKING MEASUREMENTS ON REDUCED PLANS, THE ABOVE SCALES MAY BE USED.

J.U.L.I.E.
JOINT UTILITY LOCATION INFORMATION FOR EXCAVATION
1-800-892-0123

CONTRACT NO. 60B77

GROSS LENGTH OF IMPROVEMENT = 14,179 FEET (2.7 MILES)
NET LENGTH OF IMPROVEMENT = 5,377 FEET (1.02 MILES)

STATE OF ILLINOIS
DEPARTMENT OF TRANSPORTATION
DIVISION OF HIGHWAYS

SUBMITTED March 6 2007
Diane O'Keefe
DEPUTY DIRECTOR OF HIGHWAYS, REGION ENGINEER

March 23 2007
Eric E. Harshbarger
INTERIM ENGINEER OF DESIGN AND ENVIRONMENT

March 23, 2007
Milton R. Sear
DIRECTOR OF HIGHWAY, CHIEF ENGINEER

**PRINTED BY THE AUTHORITY
OF THE STATE OF ILLINOIS**