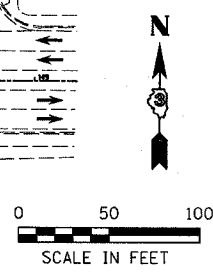
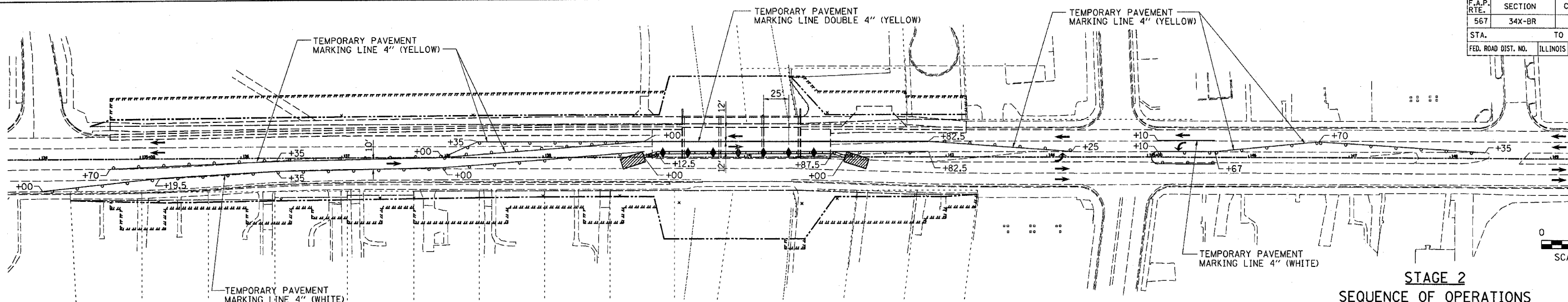


F.A.P. RTE.	SECTION	COUNTY	TOTAL SHEETS	SHEET NO.
567	34X-BR	DEKALB	90	16
STA.	TO STA.			
FED. ROAD DIST. NO.	ILLINOIS	FED. AID PROJECT		

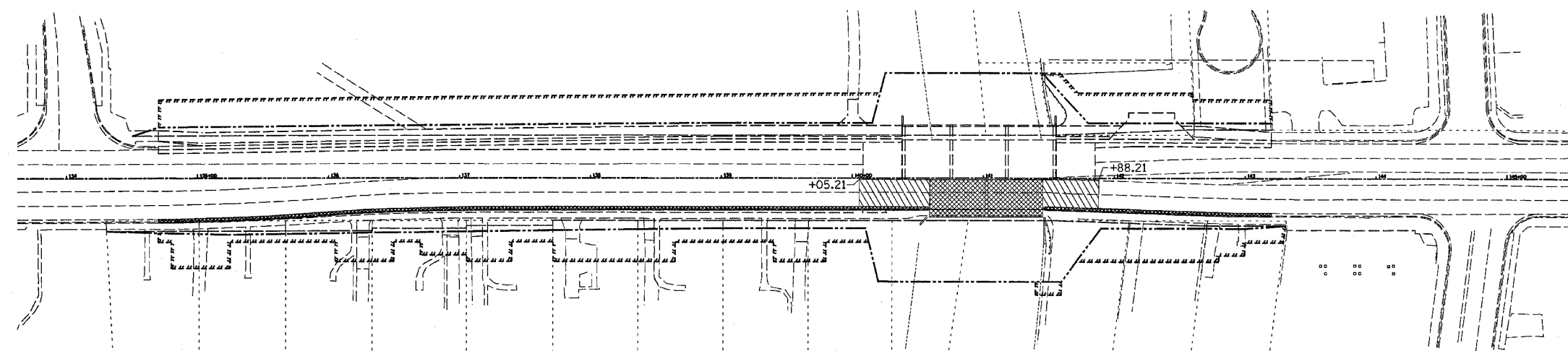


TRAFFIC CONTROL

STAGE 2 SEQUENCE OF OPERATIONS

- INSTALL ATTENUATOR BASES, ATTENUATORS AND TEMPORARY CONCRETE BARRIERS AS SHOWN. BEGIN OPERATING UNDER STAGE 2 TRAFFIC CONDITIONS ACCORDING TO TRAFFIC CONTROL AND PROTECTION STANDARD 701606. ADD THREE ARROWBOARDS IN ACCORDANCE WITH STANDARD 701606. PLACE SIGNING IN ACCORDANCE WITH STANDARD 701606.
- REMOVE SOUTH HALF OF EXISTING STRUCTURE, EXISTING PAVEMENT, COMBINATION CONCRETE CURB AND GUTTER, INLETS, SIDEWALKS, DRIVEWAY PAVEMENT AND GUARDRAIL.
- CONSTRUCT SOUTH HALF OF PROPOSED STRUCTURE, BACKFILL, COMPACT, PAVEMENT WIDENING, COMBINATION CONCRETE CURB AND GUTTER, INLETS, MANHOLES, STORM SEWERS, SIDEWALKS, DRIVEWAY PAVEMENT AND GUARDRAIL.
- REMOVE ALL TEMPORARY TRAFFIC CONTROL DEVICES, PERFORM ALL PAVEMENT MILLING OPERATIONS, PLACE POLYMERIZED LEVELING BINDER, POLYMERIZED HOT-MIX ASPHALT SURFACE COURSE, STRIPING, FINISH GRADING AND SEEDING. ALL OF THIS WORK WILL BE DONE IN ACCORDANCE WITH STANDARD 701606.

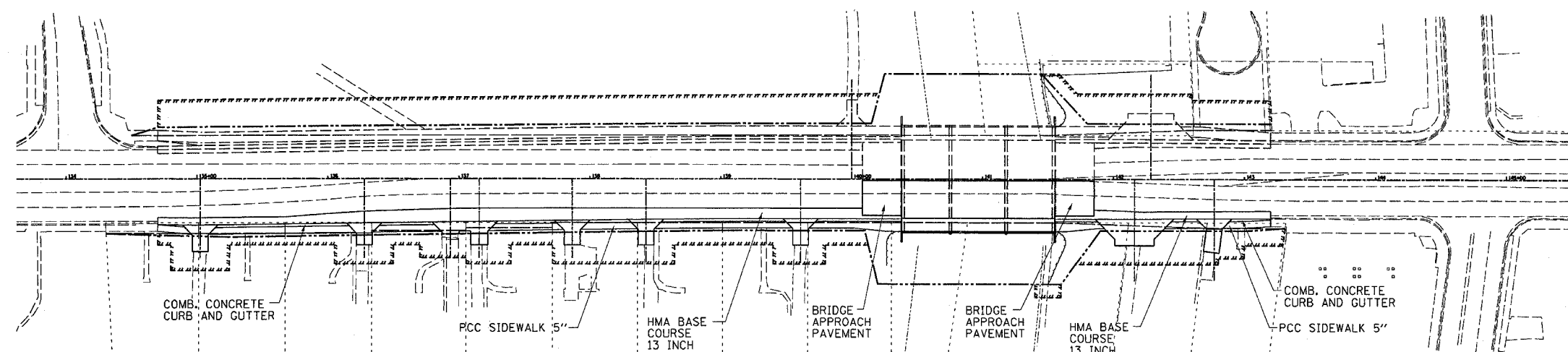
ALL TRAFFIC CONTROL DEVICES SHOWN ON THIS SHEET SHALL BE INCLUDED IN THE CONTRACT UNIT PRICE FOR TRAFFIC CONTROL PROTECTION STANDARD 701606 UNLESS SPECIFICALLY PAID FOR ELSEWHERE.



REMOVAL SCHEMATIC

LEGEND

- STRUCTURE REMOVAL
- PAVEMENT REMOVAL
- IMPACT ATTENUATOR
- TYPE III BARRICADE WITH FLASHING LIGHTS
- EDGE DRUMS AT 25' CENTERS WITH STEADY BURNING LIGHTS
- TYPE C BIDIRECTIONAL REFLECTOR
- STEADY BURNING LIGHTS AND DOUBLE VERTICAL PANEL
- PROPOSED R.O.W. LINE
- TEMPORARY CONSTRUCTION EASEMENT
- TEMPORARY CONCRETE BARRIER



CONSTRUCTION SCHEMATIC

ILLINOIS DEPARTMENT OF TRANSPORTATION STAGE 2 CONSTRUCTION

FAP RTE 567 (IL RTE 38)
SECTION 34X-BR
DEKALB COUNTY

REVISIONS	
NAME	DATE
IDOT REVIEW	10/25/06
IDOT REVISIONS	12/13/06

SCALE: VERT. DATE: 8/29/05
DRAWN BY: SUTHEARD
CHECKED BY: BOTT

GREENE & BRADFORD, INC.
OF SPRINGFIELD
COMPUTER FILE NO. D10800STG
PROJECT 05198
10/25/06-GSJ

STAGE 2 CONSTRUCTION

PLOT DATE: 12/15/2006
FILE NAME: 05198.DWG
PLOTTER: HP PLOTTER
PLOT SCALE: 1/8"=1'-0"
OPERATOR: J. SUTHEARD