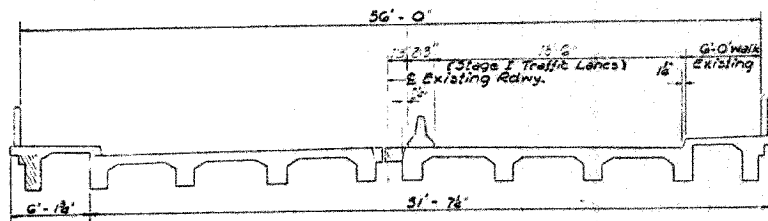


F.A.P. RTE.	SECTION	COUNTY	TOTAL SHEETS	SHEET NO.
567	34X-BR	DEKALB	90	48
STA.		TO STA.		
FED. ROAD DIST. NO.		ILLINOIS FED. AID PROJECT		

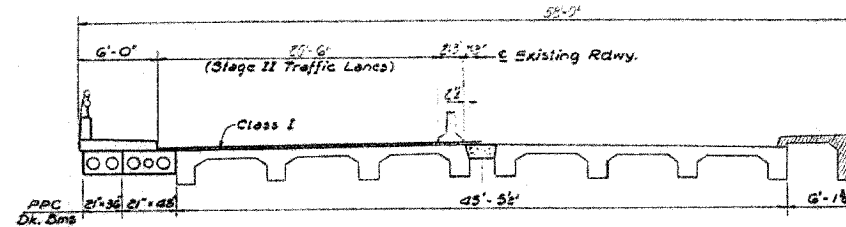
STATE OF ILLINOIS  
DEPARTMENT OF TRANSPORTATION

DATE	REVISION	BY	NO.	DATE
11/15/06	1	Design	15	6

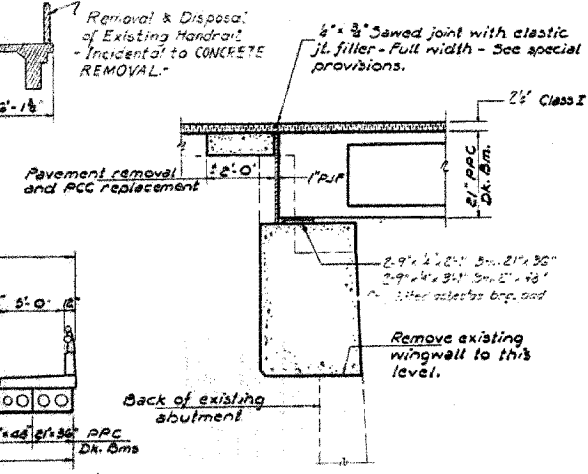
SHEET NO. 2  
3 SHEETS



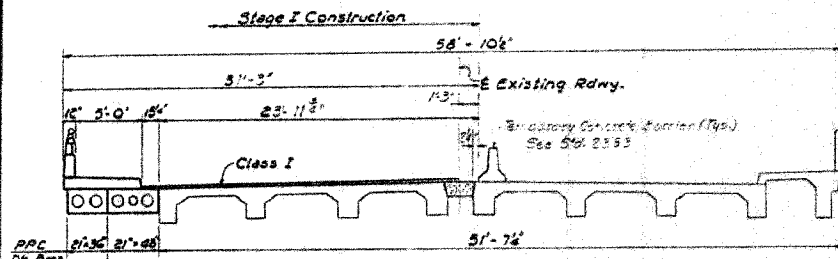
**STAGE I REMOVAL**  
(Looking East)



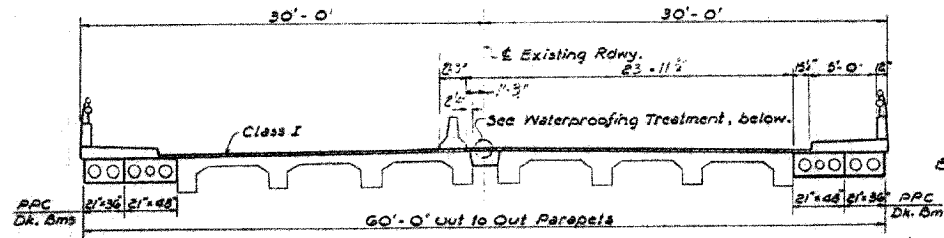
**STAGE II REMOVAL**  
(Looking East)



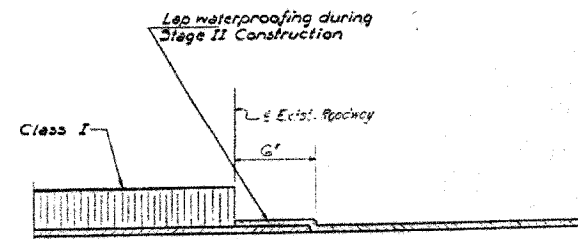
**SECTION THRU ABUT.**



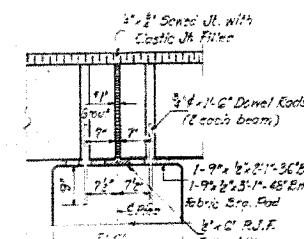
**STAGE I CONSTRUCTION**  
(Looking East)



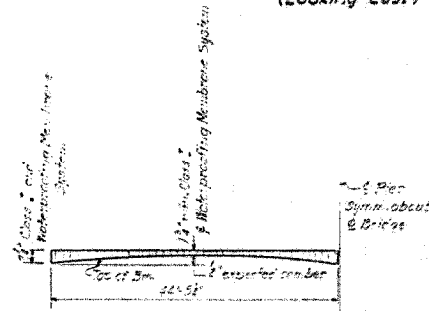
**STAGE II CONSTRUCTION**  
(Looking East)



**WATERPROOFING TREATMENT**



**SEC. THRU PIER**



**CAMBER DIAGRAM**

DESIGNED <i>J. G. Carbonell</i>	EXAMINED <i>March 30 1974</i>
CHECKED <i>J. I. Goulet</i>	PASSED <i>C. E. Thompson</i>
DRAWN <i>J. G. Carbonell</i>	APPROVED
CHECKED <i>J. I. G.</i>	

**STAGE CONSTRUCTION AND  
SUPERSTRUCTURE DETAILS**  
F.A. ROUTE 567 SEC. 34X-BY  
DEKALB COUNTY  
STATION 141+02.40

**FOR INFORMATION ONLY**

PLOT DATE # DATES  
FILE NAME # FILES  
PLOT SCALE # SCALES  
PLOTTER # OPERATOR

REVISIONS	
NAME	DATE

ILLINOIS DEPARTMENT OF TRANSPORTATION  
**EXISTING BRIDGE PLANS**

FAP RTE 567 (IL RTE 38)  
SECTION 34X-BR  
DEKALB COUNTY

SCALE: VERT. DATE 2/24/06	HORIZ. DRAWN BY SUTHEARD CHECKED BY BOTT	COMPUTER FILE NO. D10800EPLN
GREENE & BRADFORD, INC. OF STAMFORD CONSULTING ENGINEERS 1000 N. W. 10th St., Suite 100 Stamford, CT 06907 TEL: (203) 348-1111 FAX: (203) 348-1112 WWW.GREENE-AND-BRADFORD.COM		PROJECT 05198 2/27/06 MDS

**EXISTING BRIDGE PLANS**