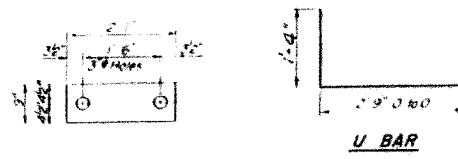


F.A.P. RTE.	SECTION	COUNTY	TOTAL SHEETS	SHEET NO.
567	34X-BR	DEKALB	90	49
STA.		TO STA.		
FED. ROAD DIST. NO.		ILLINOIS FED. AID PROJECT		

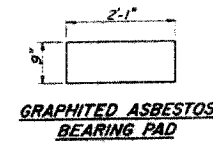
STATE OF ILLINOIS  
DEPARTMENT OF TRANSPORTATION

DATE	BY	REVISION
15	7	

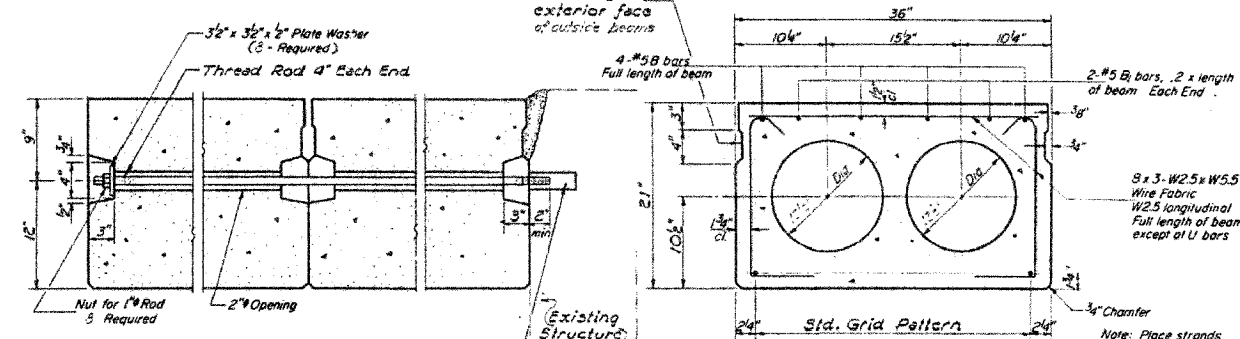
SHEET NO. 5  
9 SHEETS



FABRIC BEARING PAD

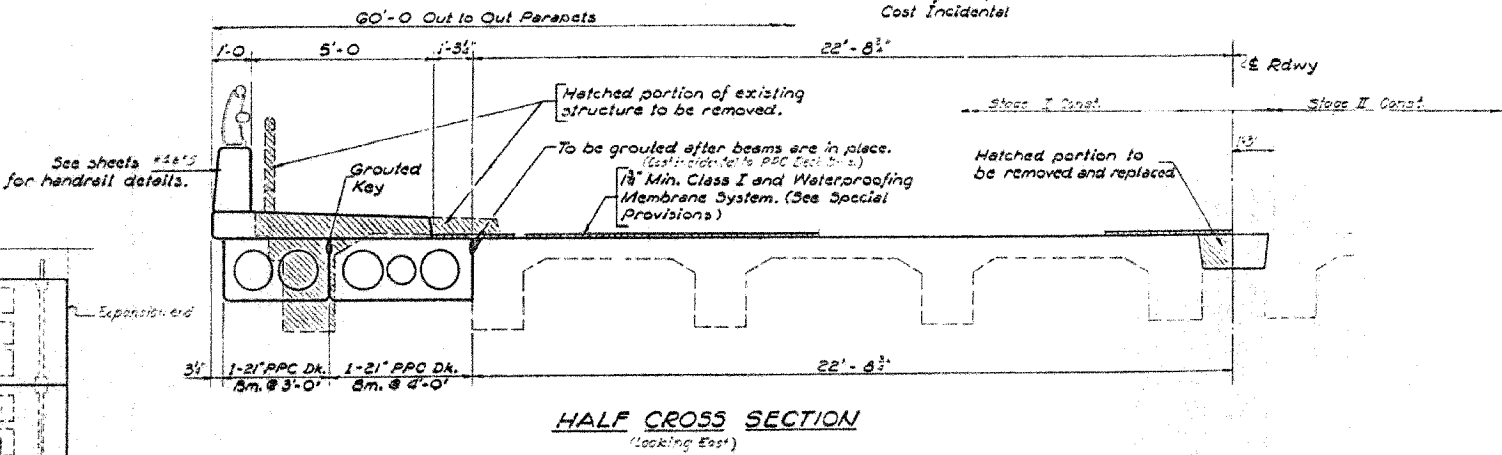


GRAPHITED ASBESTOS BEARING PAD

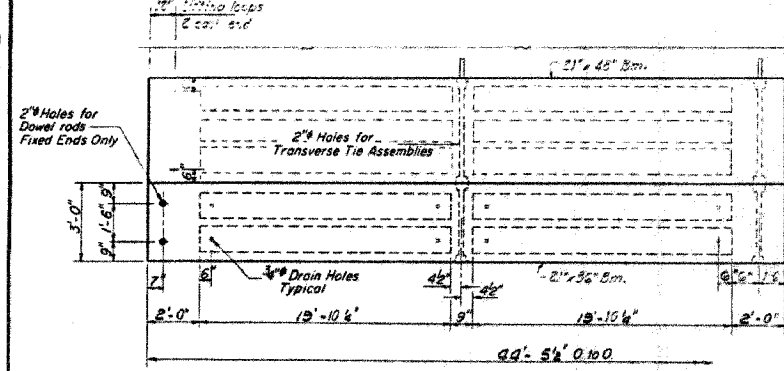


TYPICAL TRANSVERSE TIE ASSEMBLY

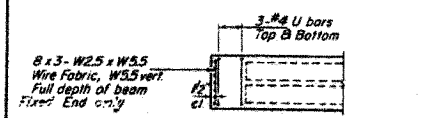
TYPICAL SECTION



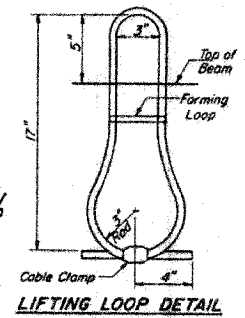
HALF CROSS SECTION  
(Looking East)



PLAN



END PLAN-FIXED END



LIFTING LOOP DETAIL

DESIGNED <i>[Signature]</i>	EXAMINED <i>[Signature]</i>
CHECKED <i>[Signature]</i>	PASSED <i>[Signature]</i>
DRAWN <i>[Signature]</i>	APPROVED <i>[Signature]</i>
CHECKED <i>[Signature]</i>	

PD-3-S 8-1-78

**BILL OF MATERIAL**

Bar	No	Size	Length	Shape
Precast Prestressed Concrete Deck Beams (21' x 36')		Sq Ft.	534	

**NOTES**

Prestressing steel shall be non-galvanized high strength, stress-relieved 7-wire strand, Grade 270. The nominal diameter shall be 1/2" and the nominal cross-sectional area shall be 0.153 sq. in. Lifting loops shall be 5/8" diameter, 6 x 25 class wire rope with fiber core and shall have a minimum ultimate tensile strength of 33,000 lbs.

The 1" rods in the transverse tie assembly shall be tightened to a snug fit and the threads set. Pockets that receive transverse tie bar on outside shall be filled with grout after transverse tie assembly is in place.

Longitudinal shear keys shall be packed with a very dry mix of 2-1 sand and P.C. mortar after beams have been erected, holes for the dowel anchors shall be drilled into the sub-structure and the anchor dowels shall be grouted in place.

Reinforcement bars shall conform to AASHTO: M-31 or M-53, Grade 60.

Cost of reinforcement and accessories cast into the beam, of bearing pads, of armor angles, and of grouting longitudinal shear keys is included in unit price bid for "Precast Prestressed Concrete Deck Beams."

**SUPERSTRUCTURE**  
F.A. RT. 567 SEC. 34-X-BY  
DEKALB COUNTY  
STATION 141+02.40

**FOR INFORMATION ONLY**

ILLINOIS DEPARTMENT OF TRANSPORTATION  
**EXISTING BRIDGE PLANS**

FAP RTE 567 (IL RTE 38)  
SECTION 34X-BR  
DEKALB COUNTY

SCALE: VERT. \_\_\_\_\_  
HORIZ. \_\_\_\_\_  
DATE: 2/24/06

DRAWN BY: SUTHEARD  
CHECKED BY: BOTT

GREENE & BRADFORD, INC.  
OF SPRINGFIELD

COMPUTER FILE NO.  
D10800EPLN  
PROJECT 05198  
2/27/06-MDS

PLOT DATE = #DATE#  
FILE NAME = #FILES#  
PLOT SCALE = #SCALE#  
PLOT SIZE = #SIZE#  
OPERATOR = #USER#