

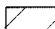

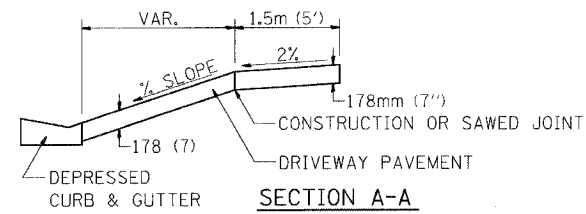
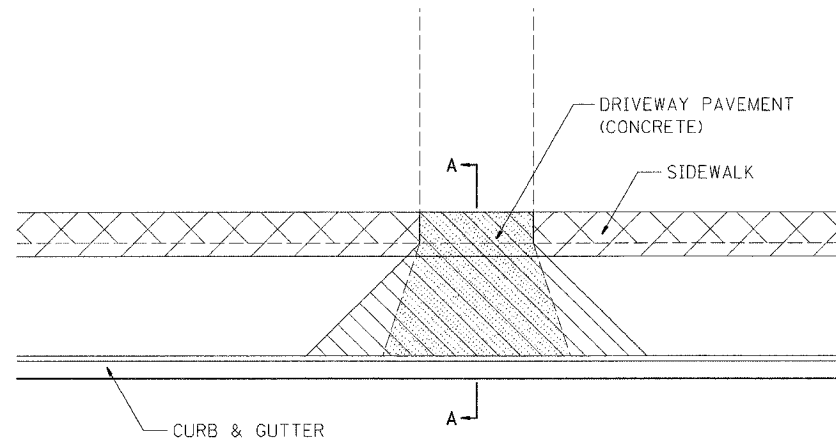


F.A.P. RTE.	SECTION	COUNTY	TOTAL SHEETS	SHEET NO.
567	34X-BR	DEKALB	90	67
STA.		TO STA.		
FED. ROAD DIST. NO.		ILLINOIS	FED. AID PROJECT	

SIDEWALK AND DRIVEWAY PAVEMENT PAY AREAS

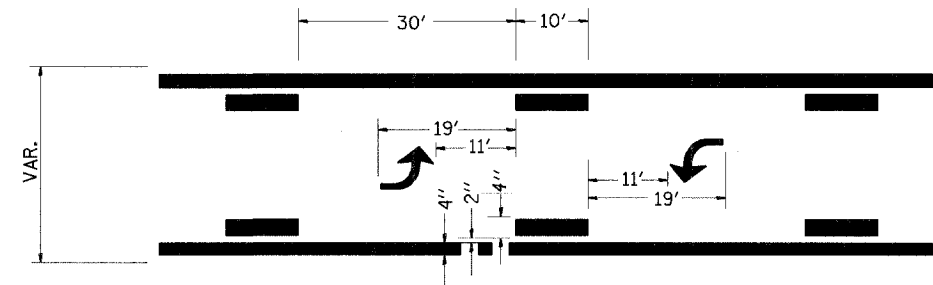
- PAY FOR AS
-  SIDEWALK REMOVAL
 -  DRIVEWAY PAVEMENT REMOVAL
 -  PCC SIDEWALK 127 (5)
 -  PCC DRIVEWAY PAVEMENT 178 (7)



FOR DETAILS ON DIMENSIONS AND GRADES, SEE DISTRICT STANDARD 25.1 OR PLANS.
ALL DIMENSIONS ARE IN MILLIMETERS (INCHES) UNLESS OTHERWISE NOTED.

SIDEWALK AND DRIVEWAY PAVEMENT PAY AREAS 35.4

REVISED 10-15-04



TYPICAL APPLICATION @ BI-DIRECTIONAL TURN LANE

780-2

LETTERING FOR NAME PLATE

STATION 140+96.71
BUILT 2007 BY
STATE OF ILLINOIS
FAP RTE. 567 SEC. 34X-BR
FA PROJECT
LOADING HS 20
STR. NO. 019-0044

SEE STD. 515001

LETTERING FOR NAME PLATE 89.4

REVISED 10-15-04

PLOT DATE = #DATES
FILE NAME = #FILES
PLOT SCALE = #SCALES
PLOT SIZE = #SIZES
OPERATOR = #USERS

ILLINOIS DEPARTMENT OF TRANSPORTATION

DETAILS

FAP RTE 567 (IL RTE 38)
SECTION 34X-BR
DEKALB COUNTY

REVISIONS	
NAME	DATE
DOT REVIEW	10/25/06

SCALE: VERT. _____
HORIZ. _____
DATE 10/12/05 DRAWN BY SUTHEARD
CHECKED BY BOTT

 **GREENE & BRADFORD, INC.**
CONSULTING ENGINEERS
1011 N. 10th St., Decatur, IL 62521
PROJECT 05198
10/25/06-GSJ