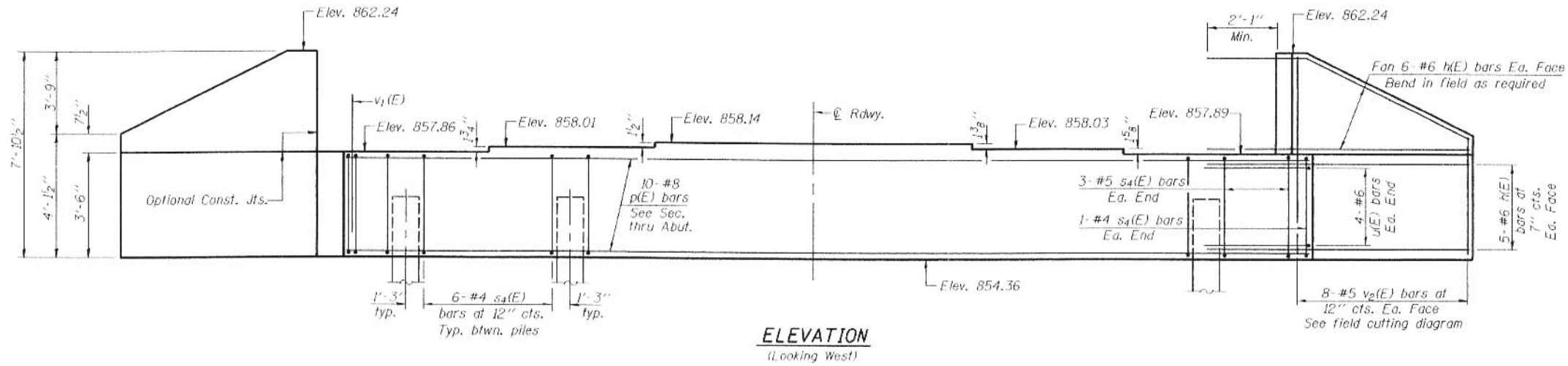


Notes: Four steps monolithically with cap.

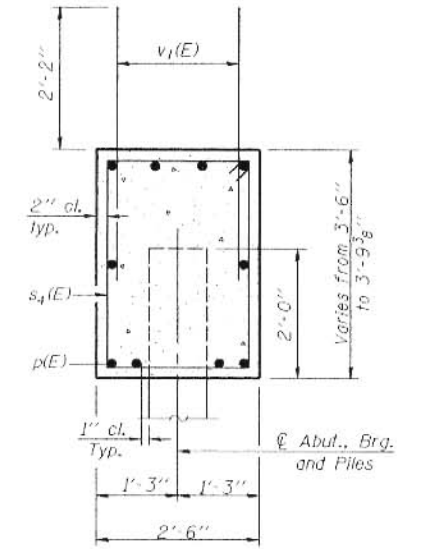
STATE OF ILLINOIS
DEPARTMENT OF TRANSPORTATION

ROUTE NO.	SECTION	COUNTY	SHEETS	NO.	SHEET NO. 11
F.A.P. 303	130 BR-4	BOONE	48		18 SHEETS
FED. ROAD DIST. NO. 7	ALIGNED	FED. AID PROJECT			

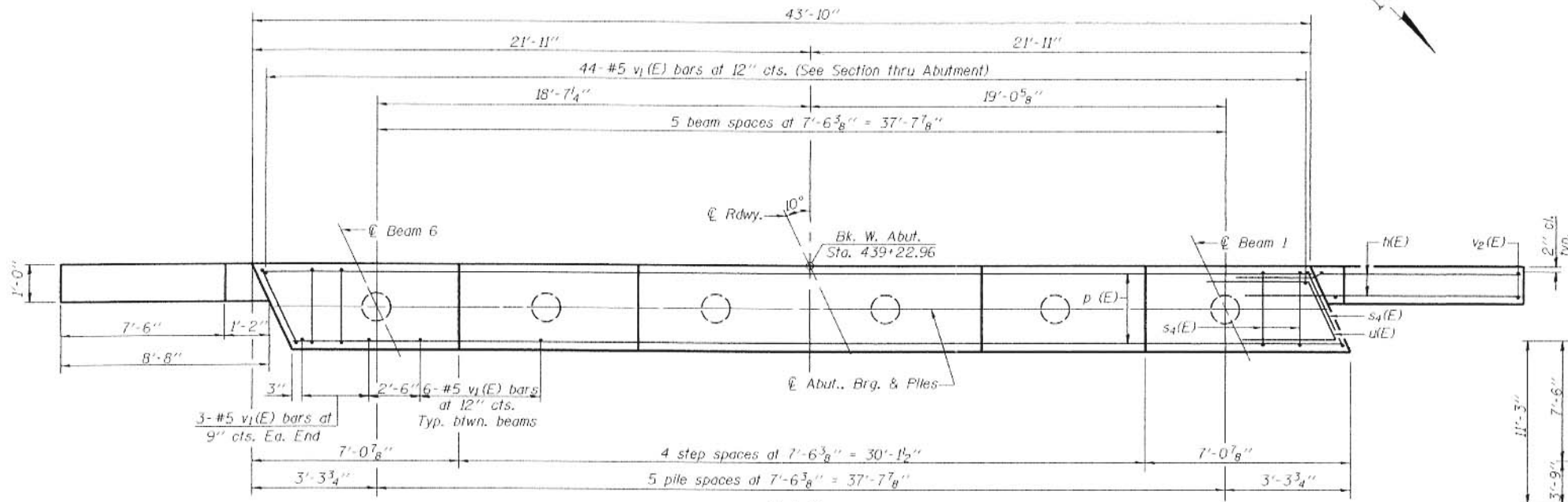
Contract #64800



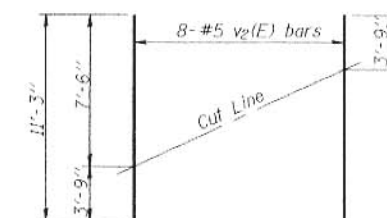
ELEVATION
(Looking West)



SEC. THRU ABUT.



PLAN



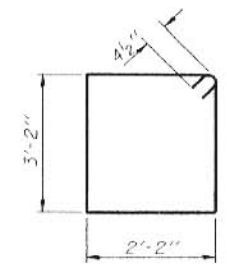
FIELD CUTTING DIAGRAM

Order v2(E) full length. Cut as shown and use remainder of bars in opposite face.

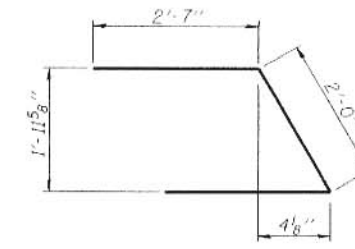
BILL OF MATERIAL

Bar	No.	Size	Length	Shape
h(E)	44	#6	11'-5"	—
p(E)	10	#8	43'-6"	—
s4(E)	38	#4	11'-5"	□
u(E)	8	#6	7'-2"	┌
v1(E)	80	#5	4'-4"	—
v2(E)	16	#5	11'-3"	—
Concrete Structures		Cu. Yd.	18.4	
Reinforcement Bars, Epoxy Coated		Pound	2840	
Structure Excavation		Cu. Yd.	193.1	
Driving Piles		Foot	235	▲
Test Pile Metal Shells		Each	1	
Furnishing Metal Shell Piles, 14"		Foot	235	▲

For details of piles and Metal Shell Reinforcement at Abutments see sheet 14 of 18.



BARS s4(E)



BAR u(E)

PILE DATA

Pile type & size: Metal Shell 14" dia. x 5/16" wall
Nominal Required Bearing: 396 kips
Allowable Resistance Available: 132 kips
Estimated Pile Length: 47'
No. of Production Piles: 5
No. of Test Piles: 1

DESIGNED	Fessaha Teklehaimanot
CHECKED	Stephen Ryan
DRAWN	R. Sommer
CHECKED	FT/SMR

EXAMINED	Thomas J. Domagalaki	March 9 2007
PASSED	Ralph E. Anderson	

WEST ABUTMENT
F.A.P. ROUTE 303 - SECTION 130BR-4
BOONE COUNTY
STATION 439+88.00
STRUCTURE NO. 004-0020