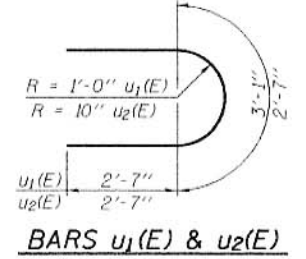
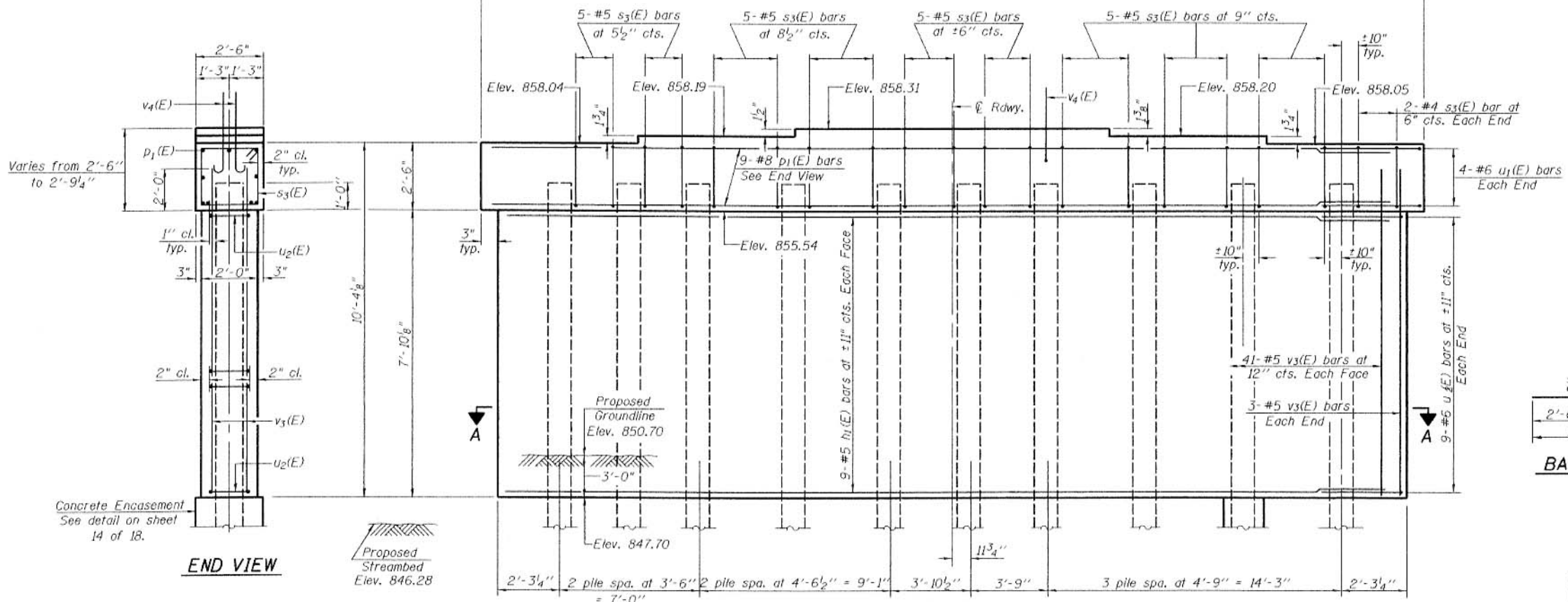
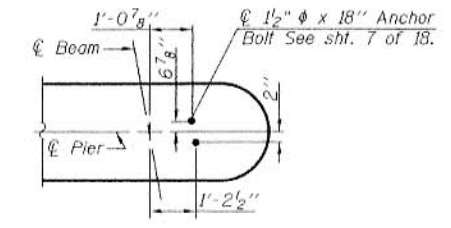
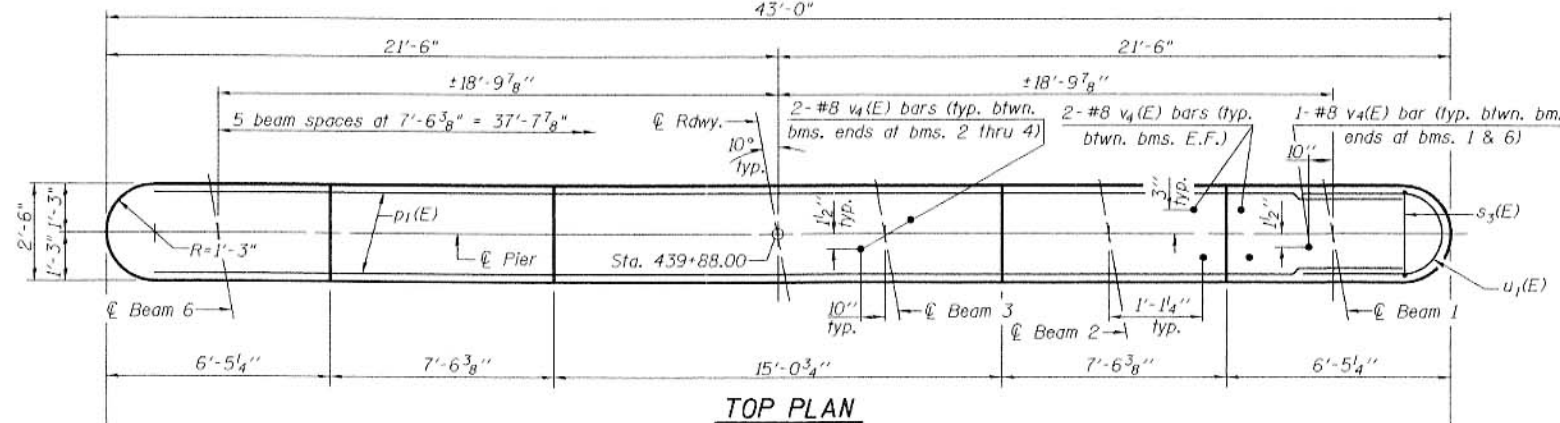


STATE OF ILLINOIS
DEPARTMENT OF TRANSPORTATION

ROUTE NO.	SECTION	COUNTY	TOTAL SHEETS	SHEET NO.	SHEET NO. 13 18 SHEETS
F.A.P. 303	130 BR-4	BOONE	50	50	
FURNISHED BY NO. 7		ENGINEER	PER. AND PROJECT		

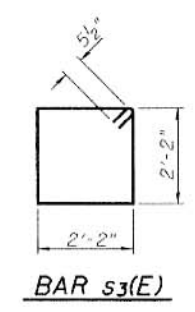
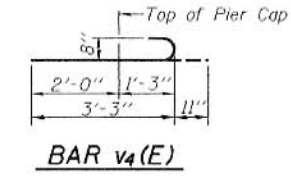
Contract #64800

Notes: Four steps monolithically with cap.
Space reinforcement in cap to miss anchor bolts.
For Plan view of existing and proposed piles.
See sheet 2 of 18.



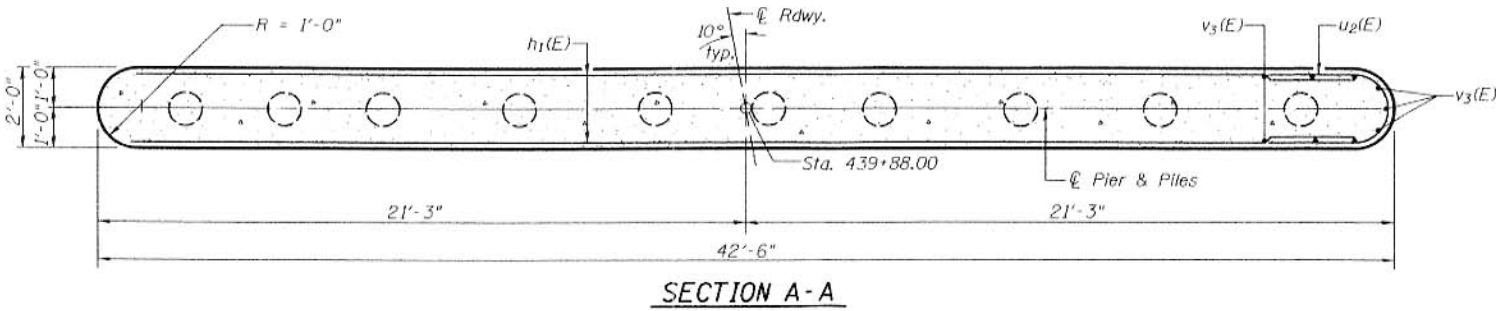
BILL OF MATERIAL

Bar No.	Size	Length	Shape
$h_1(E)$	#5	40'-6"	—
$p_1(E)$	#8	40'-6"	—
$s_3(E)$	#5	9'-7"	□
$u_1(E)$	#6	8'-3"	3
$u_2(E)$	#6	7'-9"	3
$v_3(E)$	#5	9'-8"	—
$v_4(E)$	#8	4'-2"	U
Concrete Structures		Cu. Yd.	36.9
Reinforcement Bars, Epoxy Coated		Pound	3750
Furnishing Metal Shell Piles, 14"		Foot	477
Structure Excavation		Cu. Yd.	31
Test Pile Metal Shells		Each	1
Driving Piles		Foot	477
Underwater Structure Excavation Protection - Location 1		Each	1
Concrete Encasement		Cu. Yd.	10.0



PILE DATA

Pile Type & Size: Metal Shell 14" ϕ x 5/16" Wall
Nominal Required Bearing: = 395 kips
Allowable Resistance Available: = 125 kips
Est. Length: 53'
No. of Production Piles: 9
No. of Test Piles: 1



PIER
F.A.P. ROUTE 303 - SECTION 130BR-4
BOONE COUNTY
STATION 439+88.00
STRUCTURE NO. 004-0020

DESIGNED: Fesseha Teklehaimanot
CHECKED: Stephen Ryan
DRAWN: R. Sommer
CHECKED: FT/SMR

March 9 2007
EXAMINED: Thomas J. Donagabaki
PASSED: Ralph E. Anderson