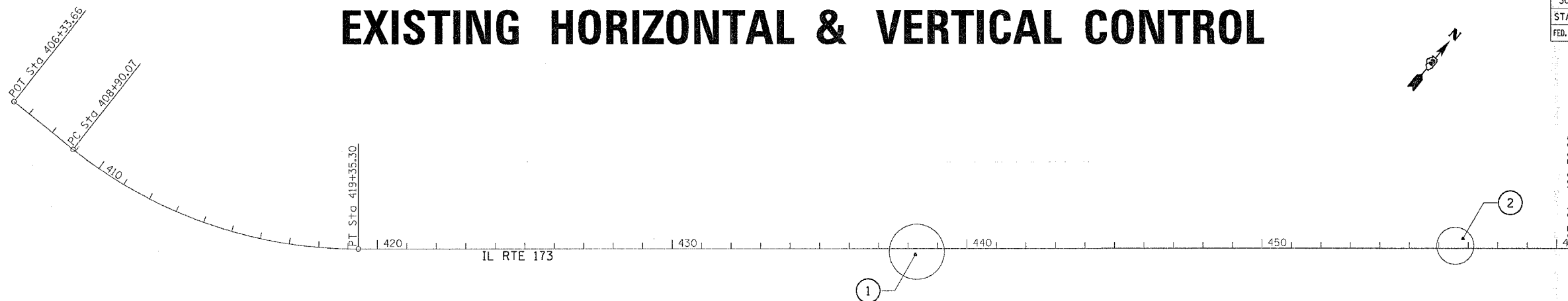


F.A.P. RTE.	SECTION	COUNTY	TOTAL SHEETS	SHEET NO.
303	130BR-4	BOONE	147	19
STA.		TO STA.		
FED. ROAD DIST. NO.		ILLINOIS	FED. AID PROJECT	

EXISTING HORIZONTAL & VERTICAL CONTROL



Chain IL173 contains:
20 CUR 200 21

Beginning chain IL173 description

Point 20 N 2,080,849.6855 E 2,668,684.9815 Sta 406+33.6565

COURSE FROM 20 TO PC 200 89° 24' 59.9135" DIST 256.4105'

Curve Data

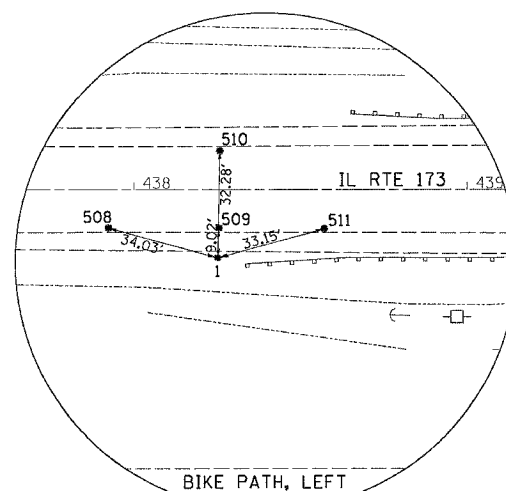
Curve 200
P.I. Station 414+33.5352 N 2,080,857.8293 E 2,669,484.8188
DELTA = 38° 43' 38.4783" (LT)
DEGREE = 3° 42' 18.4726"
Tangent = 543.4682'
Length = 1,045.2357'
Radius = 1,546,3900'
External = 92.7194'
Long Chord = 1,025.4518'
Mid. Ord. = 87.4746'
P.C. Station 408+90.0670 N 2,080,852.2961 E 2,668,941.3787
P.T. Station 419+35.3027 N 2,081,202.1303 E 2,669,905.3120
C.C. N 2,082,398.6059 E 2,668,925.6344

COURSE FROM PT 200 TO 21 50° 41' 21.4410" DIST 4,134.9729'

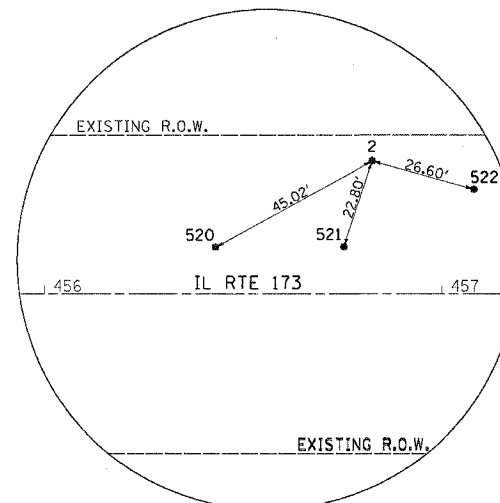
Point 21 N 2,083,821.7412 E 2,673,104.6306 Sta 460+70.2756

Ending chain IL173 description

POINT	NORTH	EAST	ELEVATION	CHAIN	STATION	OFFSET	DESCRIPTION
100	2083041.5400	2672117.1700	856.4100	IL173	448+11.9784	21.9228' LT	TRAVERSE STATION
101	2082078.2800	2670937.9400	855.9500	IL173	432+89.3327	23.6999' LT	TRAVERSE STATION
102	2081885.4700	2670705.6400	856.8550	IL173	429+87.4471	21.6866' LT	TRAVERSE STATION
103	2081891.7900	2670880.8900	860.8200	IL173	431+27.0457	84.4489' RT	TRAVERSE STATION
104	2082543.7600	2671469.1600	853.5500	IL173	439+95.2426	47.3105' LT	TRAVERSE STATION
105	2082372.5500	2671466.8000	860.1100	IL173	438+84.9508	83.6633' RT	TRAVERSE STATION
106	2081286.5200	2671366.4000	859.1000	IL173	431+19.2414	860.3424' RT	TRAVERSE STATION
107	2081315.2300	2671600.3800	851.9900	IL173	433+18.4653	986.3612' RT	TRAVERSE STATION
108	2082181.9500	2671233.8400	860.2550	IL173	435+83.9546	83.5486' RT	TRAVERSE STATION
109	2081981.3000	2670989.3600	860.6100	IL173	432+67.6782	83.9116' RT	TRAVERSE STATION
110	2081769.7700	2670731.7900	861.2300	IL173	429+34.3810	84.3998' RT	TRAVERSE STATION



HORIZONTAL CONTROL POINT No. 1



HORIZONTAL CONTROL POINT No. 2

POINT	CHAIN	STATION	OFFSET	DESCRIPTION
500	IL173	433+18.9862	11.6965' LT	PK NAIL
501	IL173	432+89.1851	11.7143' LT	PK NAIL
502	IL173	432+58.6558	11.7739' LT	PK NAIL
503	IL173	430+21.6236	11.6303' LT	PK NAIL
504	IL173	429+87.9273	11.6232' LT	PK NAIL
505	IL173	429+86.9956	11.6497' RT	PK NAIL
506	IL173	429+54.5731	11.6138' LT	PK NAIL
507	IL173	432+89.0924	11.6213' RT	PK NAIL
508	IL173	437+92.3779	11.5583' RT	PK NAIL
509	IL173	438+25.5314	11.5810' RT	PK NAIL
510	IL173	438+25.8614	11.6766' LT	PK NAIL
511	IL173	438+57.1485	11.8023' RT	PK NAIL
516	IL173	448+43.6259	11.7674' LT	PK NAIL
517	IL173	448+11.9140	11.8208' LT	PK NAIL
518	IL173	448+11.7976	11.7190' RT	PK NAIL
519	IL173	447+77.3241	12.6448' LT	PK NAIL
520	IL173	456+42.9622	11.7184' LT	PK NAIL
521	IL173	456+75.2948	11.8107' LT	PK NAIL
522	IL173	457+08.0066	26.3860' LT	PK NAIL

CURVE	PI	CC	PC	PT
200	200	201	202	203

POINT	NORTH	EAST	ELEVATION	CHAIN	STATION	OFFSET	DESCRIPTION
1	2082383.4850	2671380.6050	857.4150	IL173	438+25.1874	20.5959' RT	TRAVERSE STATION
2	2083601.9050	2672783.2850	855.8850	IL173	456+82.3717	33.4886' LT	TRAVERSE STATION

REVISIONS		ILLINOIS DEPARTMENT OF TRANSPORTATION
NAME	DATE	

SCALE: VERT. HORIZ. DATE DRAWN BY CHECKED BY

EXISTING HORIZONTAL & VERTICAL CONTROL

PLOT DATE = Fri, Dec 15 08:46:45 2006
FILE NAME = s:\mproje\11103002\1103002.dwg
USER NAME = dk12102