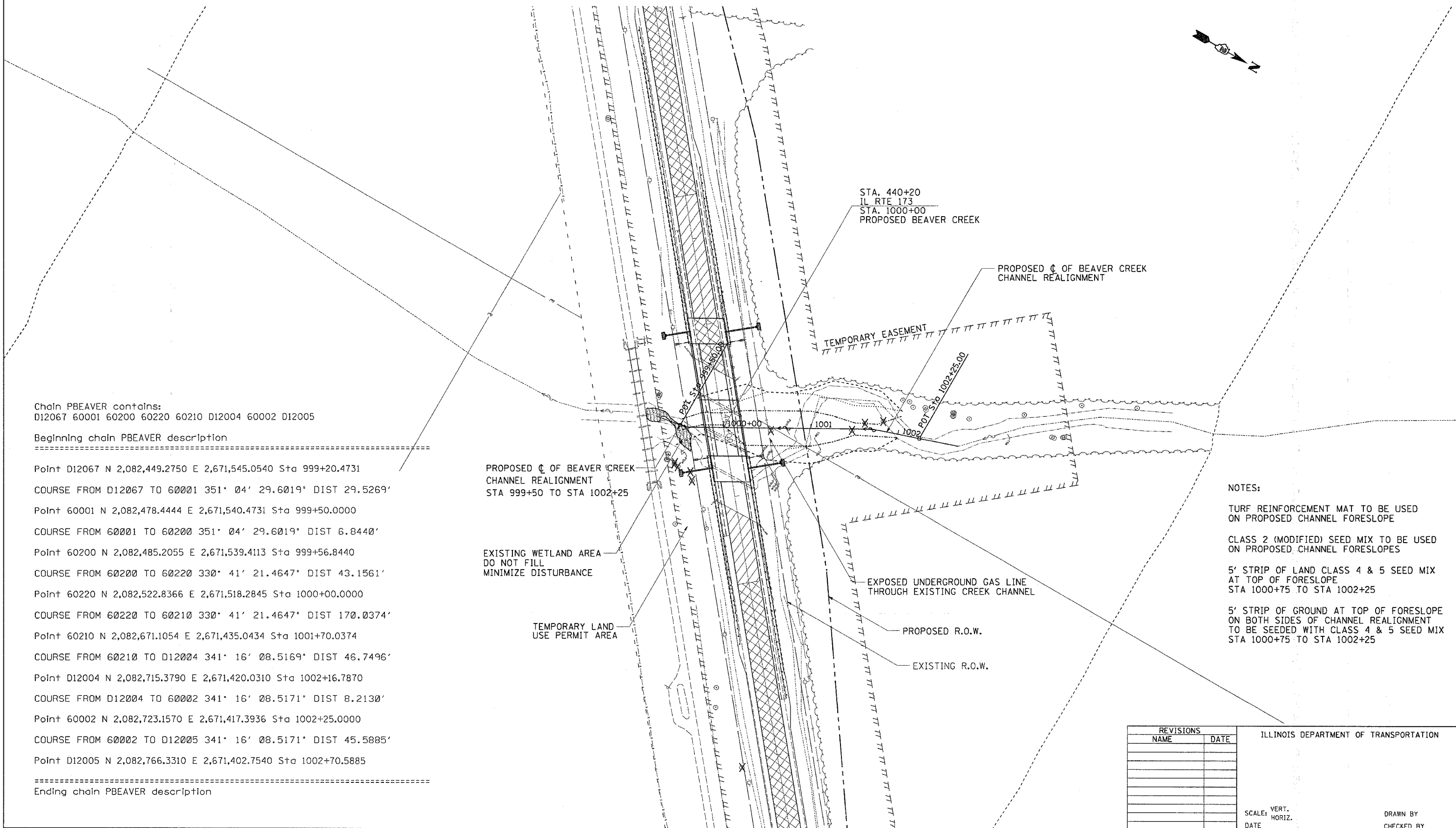


F.A.P. RTE.	SECTION	COUNTY	TOTAL SHEETS	SHEET NO.
303	130BR-4	BOONE	147	35
STA. 422+00		TO STA. 452+00		
FED. ROAD DIST. NO. ILLINOIS FED. AID PROJECT				

UTILITY, DRAINAGE, & EROSION CONTROL DETAILS PROPOSED BEAVER CREEK



Chain PBEAVER contains:
D12067 60001 60200 60220 60210 D12004 60002 D12005

Beginning chain PBEAVER description

- Point D12067 N 2,082,449.2750 E 2,671,545.0540 Sta 999+20.4731
- COURSE FROM D12067 TO 60001 351' 04' 29.6019" DIST 29.5269'
- Point 60001 N 2,082,478.4444 E 2,671,540.4731 Sta 999+50.0000
- COURSE FROM 60001 TO 60200 351' 04' 29.6019" DIST 6.8440'
- Point 60200 N 2,082,485.2055 E 2,671,539.4113 Sta 999+56.8440
- COURSE FROM 60200 TO 60220 330' 41' 21.4647" DIST 43.1561'
- Point 60220 N 2,082,522.8366 E 2,671,518.2845 Sta 1000+00.0000
- COURSE FROM 60220 TO 60210 330' 41' 21.4647" DIST 170.0374'
- Point 60210 N 2,082,671.1054 E 2,671,435.0434 Sta 1001+70.0374
- COURSE FROM 60210 TO D12004 341' 16' 08.5169" DIST 46.7496'
- Point D12004 N 2,082,715.3790 E 2,671,420.0310 Sta 1002+16.7870
- COURSE FROM D12004 TO 60002 341' 16' 08.5171" DIST 8.2130'
- Point 60002 N 2,082,723.1570 E 2,671,417.3936 Sta 1002+25.0000
- COURSE FROM 60002 TO D12005 341' 16' 08.5171" DIST 45.5885'
- Point D12005 N 2,082,766.3310 E 2,671,402.7540 Sta 1002+70.5885

Ending chain PBEAVER description

PROPOSED ϕ OF BEAVER CREEK
CHANNEL REALIGNMENT
STA 999+50 TO STA 1002+25

EXISTING WETLAND AREA
DO NOT FILL
MINIMIZE DISTURBANCE

TEMPORARY LAND
USE PERMIT AREA

STA. 440+20
IL RTE 173
STA. 1000+00
PROPOSED BEAVER CREEK

PROPOSED ϕ OF BEAVER CREEK
CHANNEL REALIGNMENT

TEMPORARY EASEMENT

EXPOSED UNDERGROUND GAS LINE
THROUGH EXISTING CREEK CHANNEL

PROPOSED R.O.W.

EXISTING R.O.W.

NOTES:

- TURF REINFORCEMENT MAT TO BE USED ON PROPOSED CHANNEL FORESLOPE
- CLASS 2 (MODIFIED) SEED MIX TO BE USED ON PROPOSED CHANNEL FORESLOPES
- 5' STRIP OF LAND CLASS 4 & 5 SEED MIX AT TOP OF FORESLOPE STA 1000+75 TO STA 1002+25
- 5' STRIP OF GROUND AT TOP OF FORESLOPE ON BOTH SIDES OF CHANNEL REALIGNMENT TO BE SEEDED WITH CLASS 4 & 5 SEED MIX STA 1000+75 TO STA 1002+25

REVISIONS	
NAME	DATE

ILLINOIS DEPARTMENT OF TRANSPORTATION

SCALE: VERT.
HORIZ.
DATE

DRAWN BY
CHECKED BY

PLOT DATE = Fri, Feb 23 09:59:59 2007
 FILE = \\s01\proj\64800\64800.dgn
 PLOT SCALE = 50.0000' = 1"
 USER NAME = ditzleras