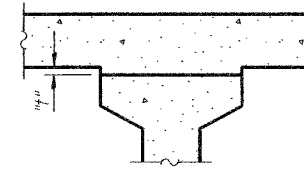
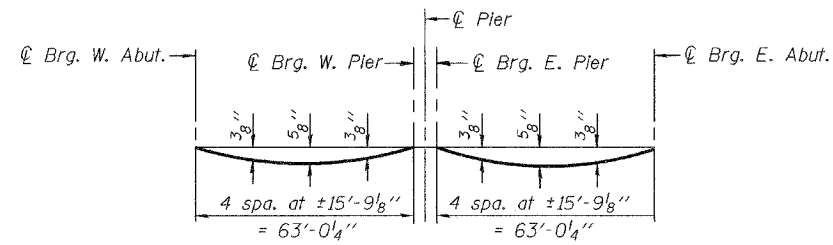


STATE OF ILLINOIS
DEPARTMENT OF TRANSPORTATION



ROUTE NO.	SECTION	COUNTY	TOTAL SHEETS	SHEET NO.
F.A.P. 303	130 BR-4	BOONE	40	18 SHEETS
FED. ROAD DIST. NO. 7		ILLINOIS	FED. AID PROJECT-	

Contract #64800



DEAD LOAD DEFLECTION DIAGRAM

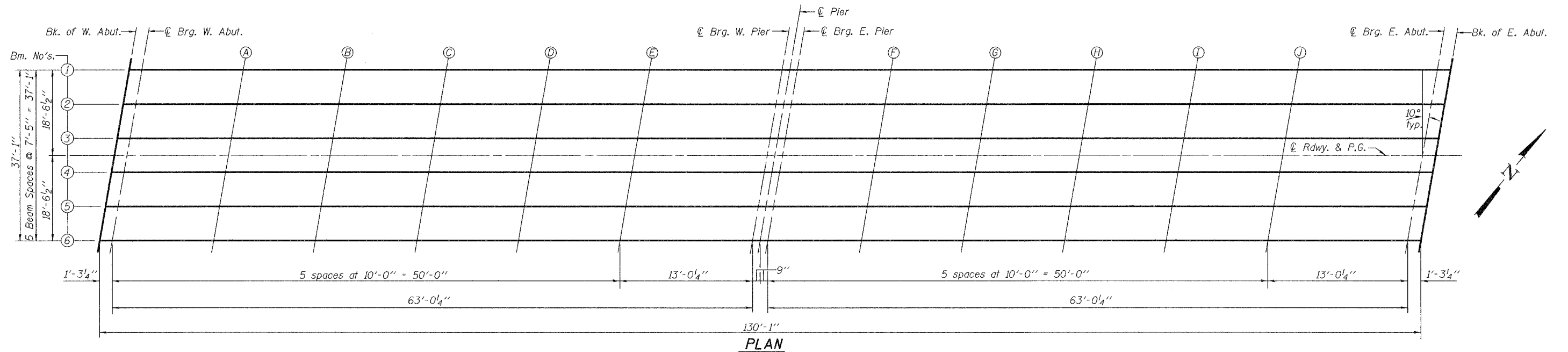
(Includes weight of concrete excluding beams)

Note:

The above deflections are not to be used in the field if the Engineer is working from the grade elevations adjusted for dead load deflections as shown below and on sheet 4 of 18.

To determine "t": After all precast prestressed beams have been erected, elevations of the top flanges of the beams shall be taken at intervals shown below. These elevations subtracted from the "Theoretical Grade Elevations Adjusted for Dead Load Deflections" shown below, minus slab thickness, equals the fillet heights "t" above top flanges of beams.

FILLET HEIGHTS



PLAN

BEAM 1

Location	Station	Offset	Theoretical Grade Elevations	Theoretical Grade Elevations Adjusted For Dead Load Deflection
Bk. of W. Abut.	43926.23	-18.54	862.14	862.14
⊕ Brg. W. Abut.	43927.50	-18.54	862.15	862.15
A	43937.50	-18.54	862.19	862.21
B	43947.50	-18.54	862.23	862.27
C	43957.50	-18.54	862.26	862.31
D	43967.50	-18.54	862.28	862.32
E	43977.50	-18.54	862.30	862.32
⊕ Brg. W. Pier	43990.52	-18.54	862.31	862.31
⊕ Pier	43991.27	-18.54	862.31	862.31
⊕ Brg. E. Pier	43992.02	-18.54	862.31	862.31
F	44002.02	-18.54	862.31	862.33
G	44012.02	-18.54	862.31	862.34
H	44022.02	-18.54	862.29	862.34
I	44032.02	-18.54	862.28	862.32
J	44042.02	-18.54	862.25	862.28
⊕ Brg. E. Abut.	44055.04	-18.54	862.21	862.21
Bk. of E. Abut.	44056.31	-18.54	862.21	862.21

DESIGNED	Fesseha Teklehaimanot
CHECKED	Stephen Ryan
DRAWN	R. Sommer
CHECKED	FT/SMR

EXAMINED	Thomas J. Domagalaki	March 9, 2007
PASSED	Ralph E. Anderson	

TOP OF SLAB ELEVATIONS
F.A.P. ROUTE 303 - SECTION 130BR-4
BOONE COUNTY
STATION 439+88.00
STRUCTURE NO. 004-0020