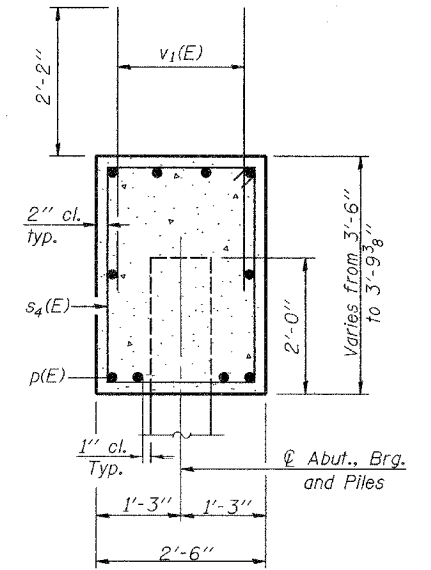
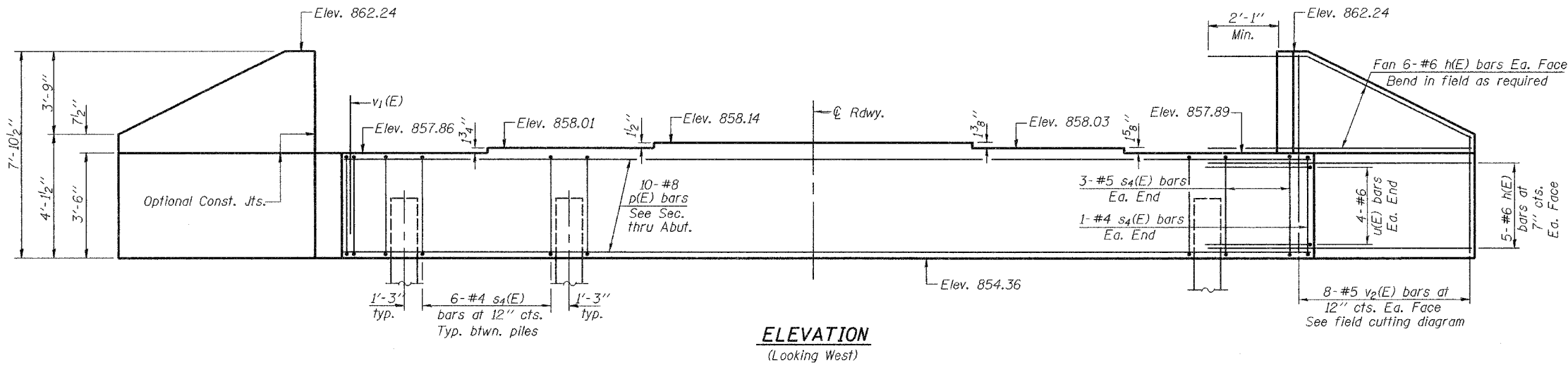


Notes: Four steps monolithically with cap.

STATE OF ILLINOIS
DEPARTMENT OF TRANSPORTATION

ROUTE NO.	SECTION	COUNTY	TOTAL SHEETS	SHEET NO.	SHEET NO. 11
F.A.P. 303	130 BR-4	BOONE	48	18 SHEETS	
FED. ROAD DIST. NO. 7	ILLINOIS	FED. AID PROJECT			

Contract #64800



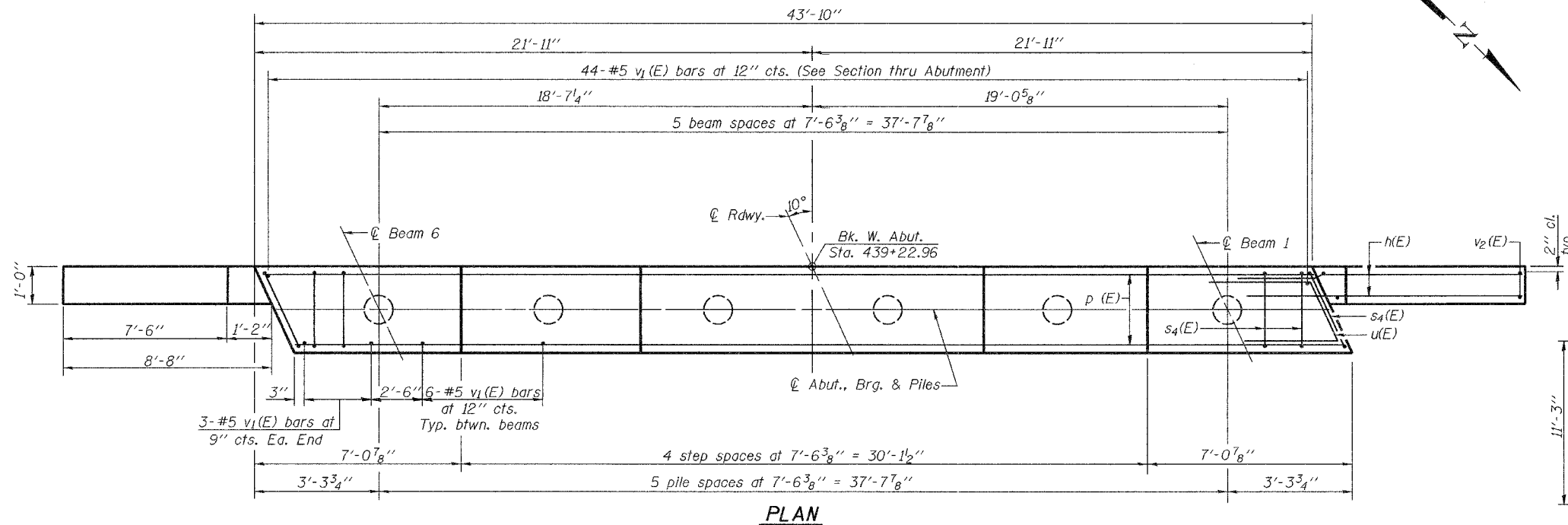
SEC. THRU ABUT.

BILL OF MATERIAL

Bar	No.	Size	Length	Shape
h(E)	44	#6	11'-5"	—
p(E)	10	#8	43'-6"	—
s4(E)	38	#4	11'-5"	□
u(E)	8	#6	7'-2"	∩
v1(E)	80	#5	4'-4"	—
v2(E)	16	#5	11'-3"	—
Concrete Structures		Cu. Yd.	18.4	
Reinforcement Bars, Epoxy Coated		Pound	2840	
Structure Excavation		Cu. Yd.	193.1	
Driving Piles		Foot	280	
Test Pile Metal Shells		Each	1	
Furnishing Metal Shell Piles, 14"		Foot	280	

For details of piles and Metal Shell Reinforcement at Abutments see sheet 14 of 18.

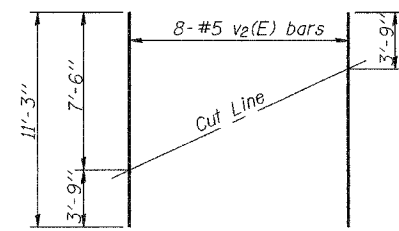
WEST ABUTMENT
F.A.P. ROUTE 303 - SECTION 130BR-4
BOONE COUNTY
STATION 439+88.00
STRUCTURE NO. 004-0020



PLAN

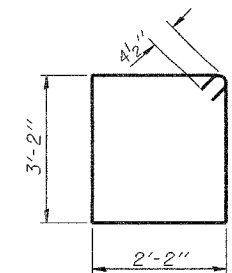
FIELD CUTTING DIAGRAM

Order v2(E) Full length. Cut as shown and use remainder of bars in opposite face.

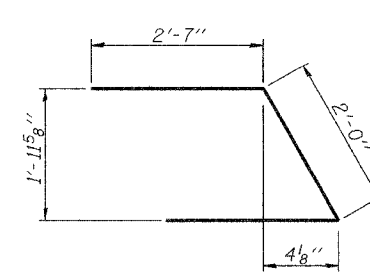


PILE DATA

Pile type & size: Metal Shell 14" dia. x 1/4" in wall
Nominal Required Bearing: 416 kips
Allowable Resistance Available: 139 kips
Estimated Pile Length: 56'
No. of Production Piles: 5
No. of Test Piles: 1



BARS s4(E)



BAR u(E)

DESIGNED	Fesseha Teklehaimanot
CHECKED	Stephen Ryan
DRAWN	R. Sommer
CHECKED	FT/SMR

EXAMINED	March 9, 2007	Thomas J. Domagalaki
PASSED		Ralph E. Anderson