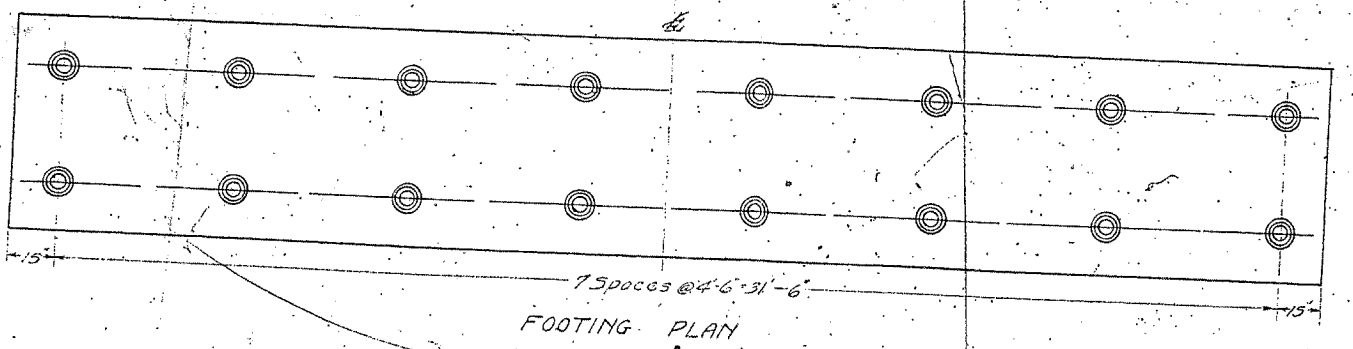
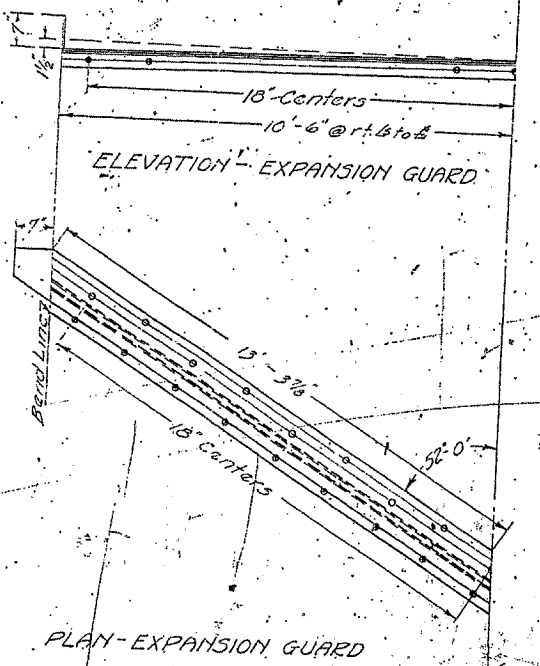
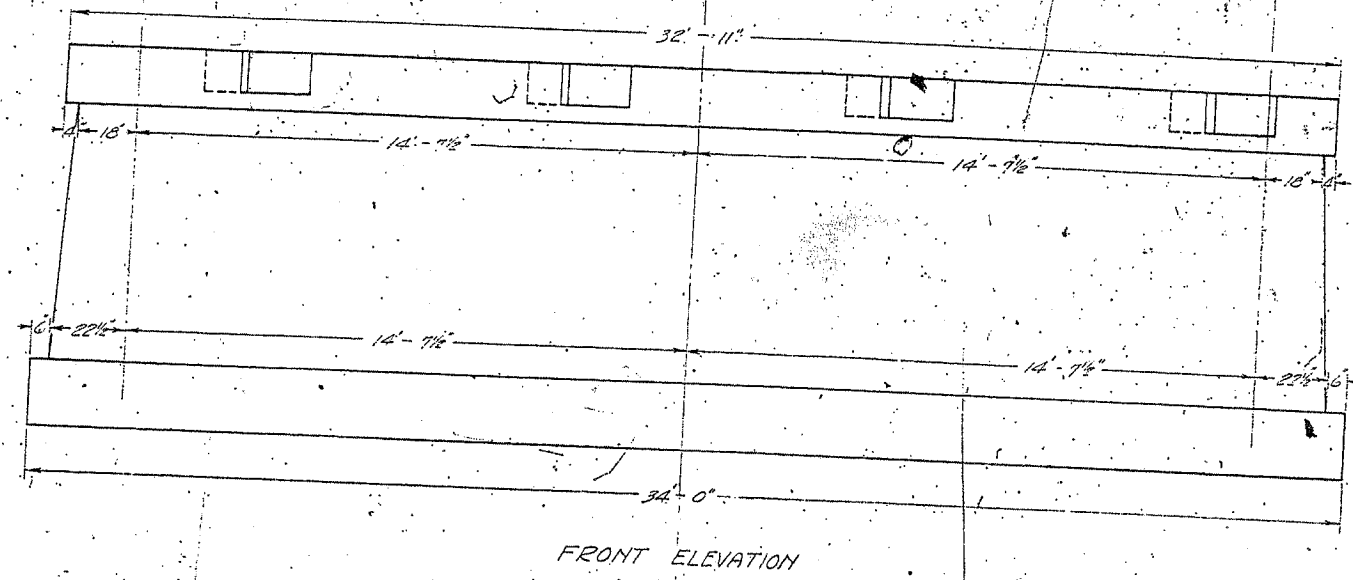
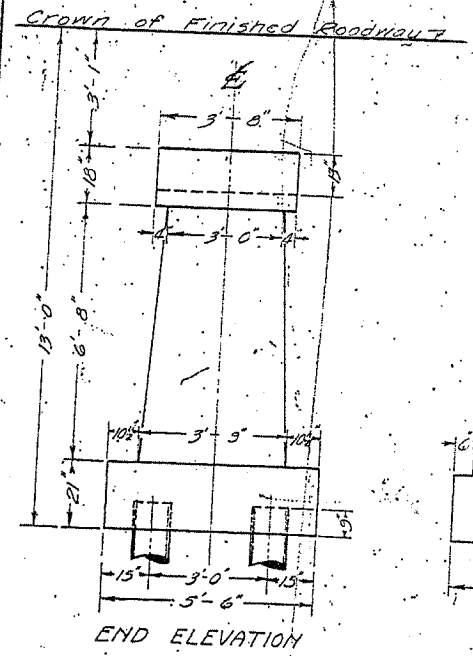
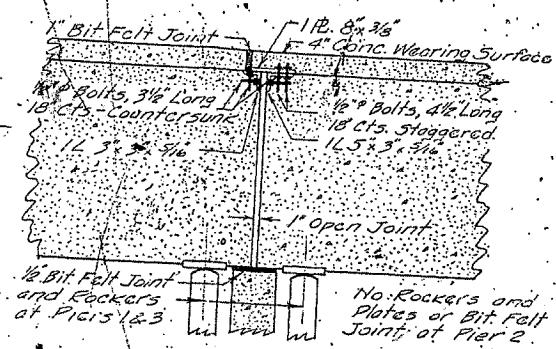
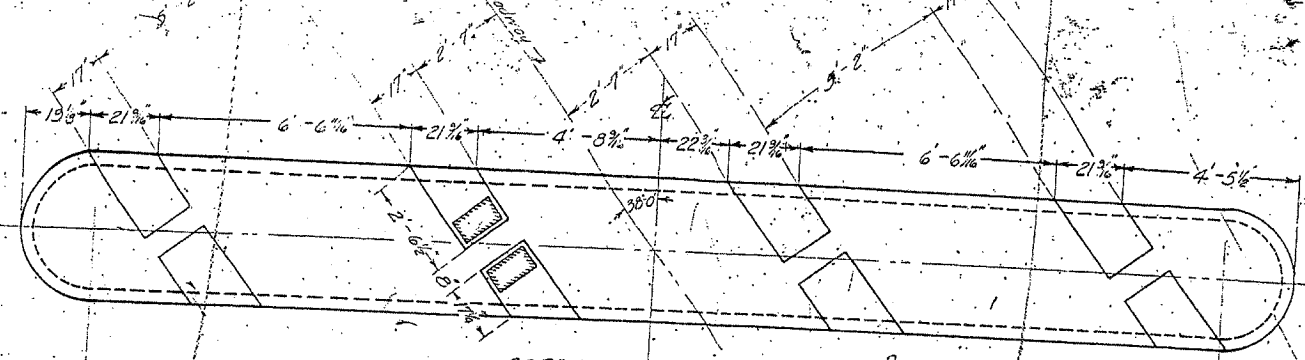


F.A.P. RTE.	SECTION	COUNTY	TOTAL SHEETS	SHEET NO.
303	130BR-4	BOONE	14	59
STA. 429+00.0000		TO STA. 430+00.0000		
FED. ROAD DIST. NO.		ILLINOIS FED. AID PROJECT		

STATE OF ILLINOIS  
DEPARTMENT OF PUBLIC WORKS & BUILDINGS  
DIVISION OF HIGHWAYS

ROUTE	COUNTY	SEC.	TOTAL SHEETS	SHEET NO.
173	Boone	56	52	4

B.M. #23 - 2 R.R. spikes in north end of cap at first bent, east end of R.R. bridge right of Sta. 309+50. Elev. 853.23



3 PIERS  
BILL OF MATERIAL  
Class B Concrete - Cu. Yds. - 1340  
15 Ton Untr. Piling - Lin. Ft. - 960

Note:  
Omit pockets in pier 2.  
Use class B concrete throughout.  
Proportions - 1:3:5

15 Ton Untreated Piling,  
12 Butt, 10" Tip, 48 Reg'd.  
Est. Length 960 Lin. Ft.

STANDARD	COMPUTED	BY
CHECKED	—	W.M. Romine
DRAWN	—	R. H. Humphrey
CHECKED	—	W.M.R.
ASSEMBLED	—	R.H.M.
CHECKED	—	

EXAMINED March 27, 1938  
J. F. Smith  
BRIDGE ENGINEER  
PASSED  
APPROVED  
Chief Highway Engineer

3 EXPANSION GUARDS REQUIRED  
STRUCTURAL STEEL - LBS - 2080

BEAVER CREEK  
S.W. ROUTE 173 SECTION 130-B  
BOONE COUNTY  
STATION 310+00