

F.A.P. RTE.	SECTION	COUNTY	TOTAL SHEETS	SHEET NO.
303	130BR-1	BOONE	147	80
STA. 429+00.0000 TO STA. 450+00.0000				
FED. ROAD DIST. NO. ILLINOIS FED. AID PROJECT				

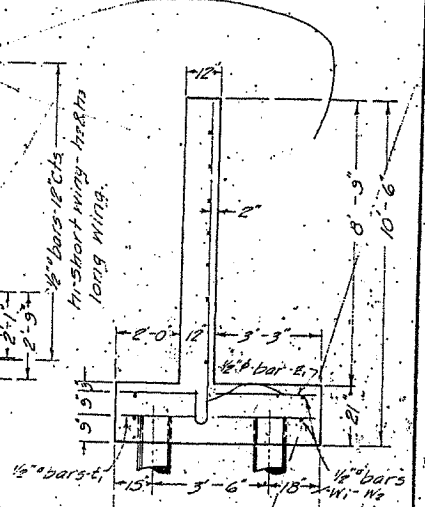
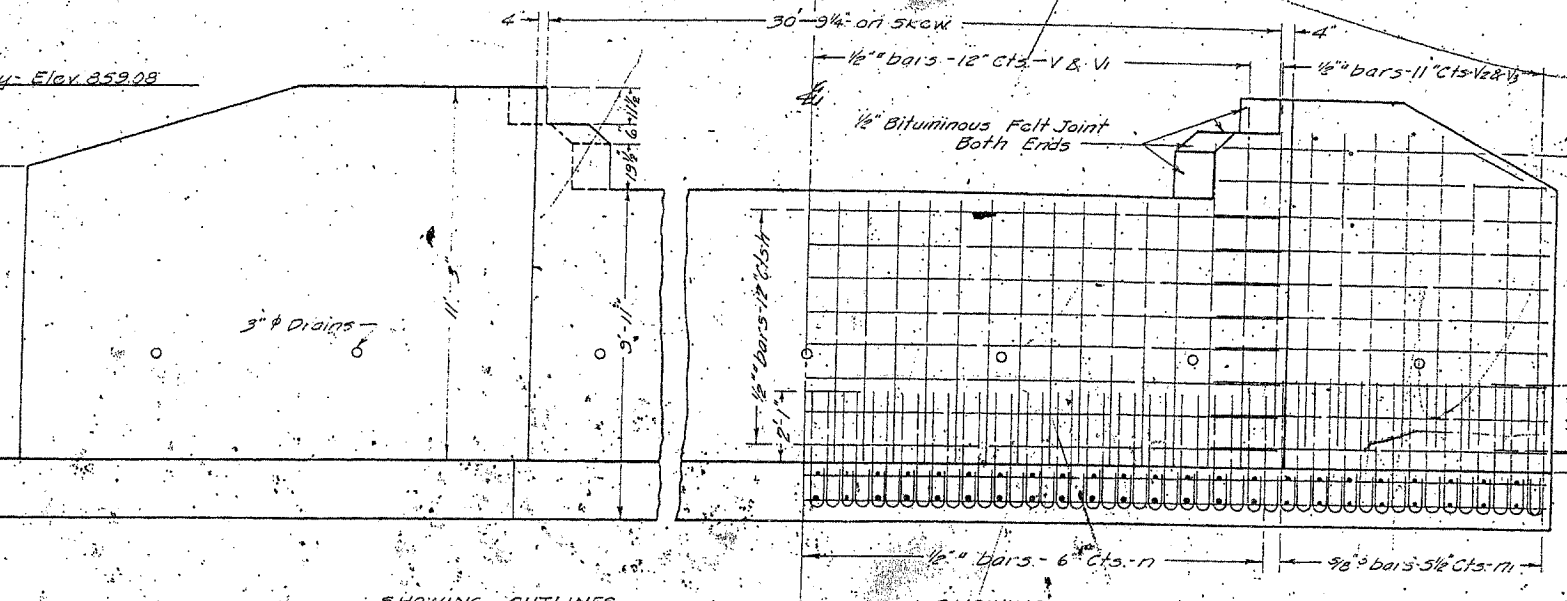
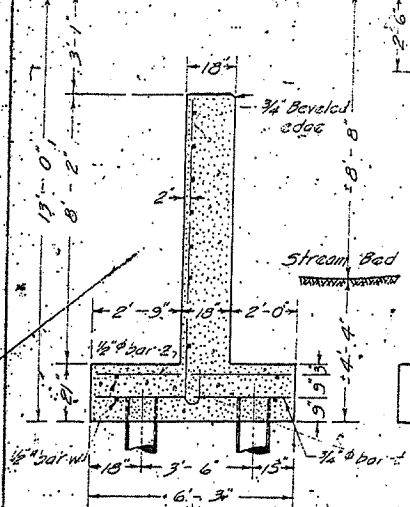
STATE OF ILLINOIS
DEPARTMENT OF PUBLIC WORKS & BUILDINGS
DIVISION OF HIGHWAYS

ROUTE NO.	COUNTY	SEC.	TOTAL SHEETS	SHEET NO.
173	Boone	308	56	53

SHEET NO. 4
4 SHEETS

No existing structure.
B.M. # 23 - 2 R.R. spikes in north end of top of first bent, east end of R.R. bridge, right Sta. 303+50. Elev. 858.28

Crown of Finished Roadway - Elev. 859.08



SECTION OF ABUTMENT

SHOWING OUTLINES

ELEVATION

SHOWING REINFORCEMENT

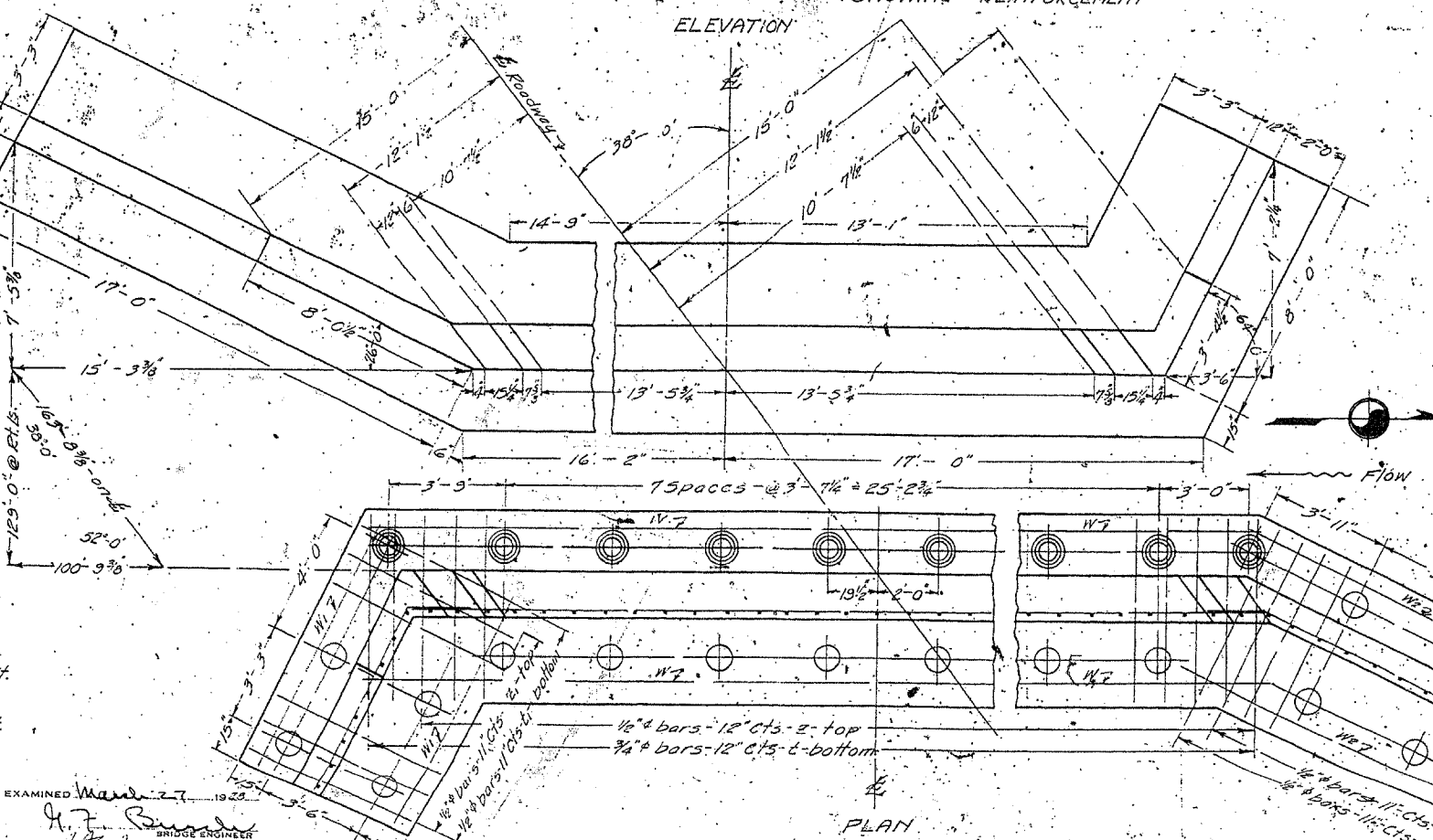
END OF WING

Class A concrete shall be used throughout.
Proportions - 1:2 1/2:4.
All reinforcing steel shall be wired securely in place before concrete is poured.

Bars in each short wing - 6x 3 V's, 10 H's, 9 L's, 8 B's, 4 W's.
Bars in each long wing - 11 V's, 6 V's, 8 H's, 2 H's, 10 L's, 17 B's, 4 W's.

15 Ton Untreated Piling, 12' Butt, 10' Tip, 20 Required, Estimated Length 400 Lin. Ft.
10 Ton Untreated Piling, 10' Butt, 8' Tip, 40 Required, Estimated Length 600 Lin. Ft.

STANDARD	COMPUTED	<i>R.M. Bennett</i>	EXAMINED	<i>March 27, 1923</i>
	CHECKED	<i>R.M. Bennett</i>		
	DRAWN	<i>J.M. R.</i>		
	CHECKED	<i>R.M. Bennett</i>		
SPECIAL	ASSEMBLED	<i>R.M. Bennett</i>	APPROVED	<i>Chief Highway Engineer</i>
	CHECKED			



BILL OF MATERIAL

Bar	No.	Size	Length
V	54	1/2"	8'-0"
V	8	1/2"	10'-0"
V	34	1/2"	9'-6"
V	18	1/2"	8'-0"
H	32	1/2"	16'-6"
H	20	1/2"	9'-0"
H	16	1/2"	18'-0"
H	4	1/2"	11'-0"
L	184	1/2"	4'-3"
L	164	3/8"	5'-3"
B	68	3/8"	6'-0"
B	54	1/2"	6'-0"
B	64	1/2"	6'-0"
B	50	1/2"	6'-0"
W	16	1/2"	17'-6"
W	8	1/2"	9'-0"
W	8	1/2"	17'-0"
Reinforcing Steel - lbs - 4430			
Concrete - cu Yds - 31.7			

BEAVER CREEK
S.B.I. - ROUTE 173 - SECTION 130-B
BOONE COUNTY
STATION 310+00