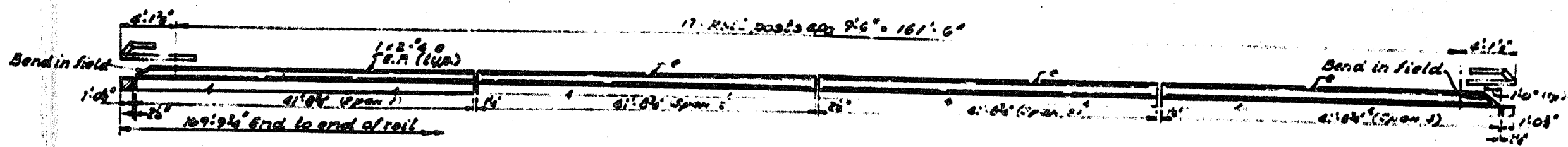
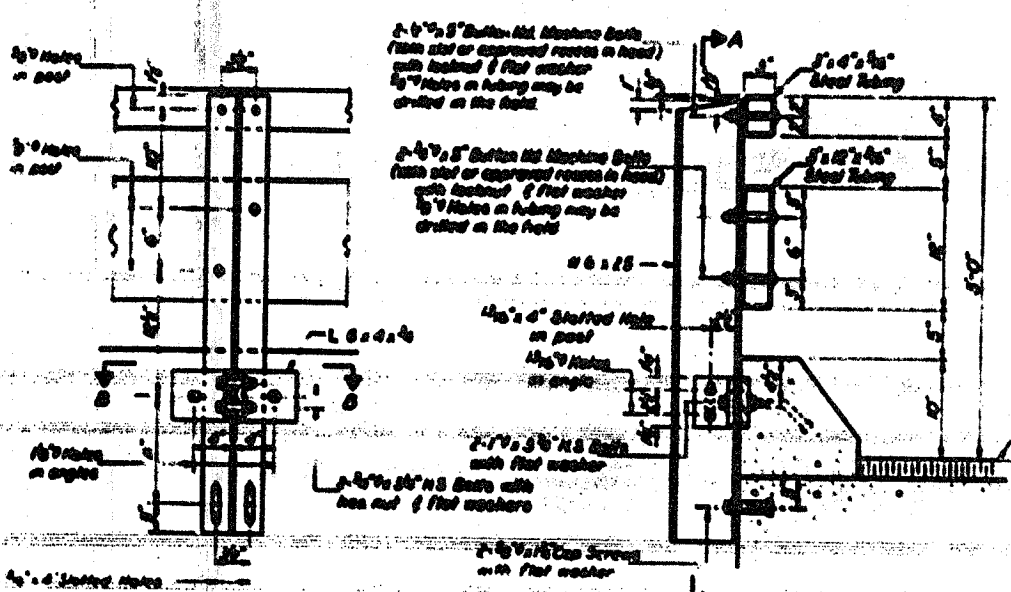


STATE OF ILLINOIS

DATE	NO.	BY	CHKD.	DATE
10/25/51	1	Boone	14	5
SHEET NO. 6				

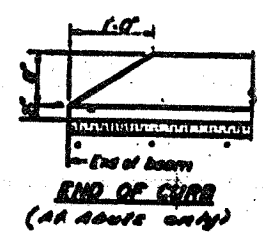


ELEVATION
(Looking North)

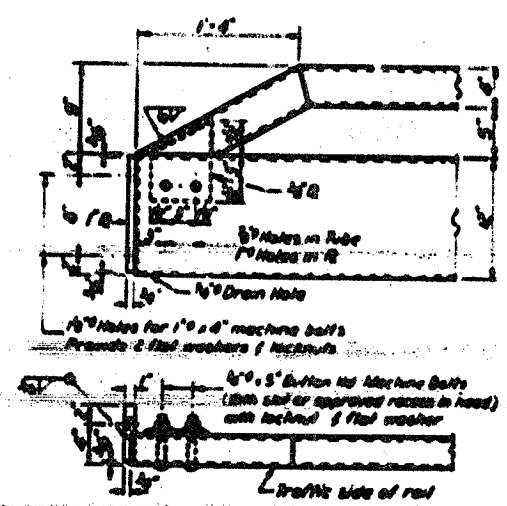


SECTION A-A

SECTION AT RAIL POST



END OF CURB
(AA Abutts only)



END OF RAIL DETAILS

NOTES

1. All structural steel tubing shall conform to the requirements of ASTM designation A-500 Grade B or A-501 Structural Steel Tubing.

2. All other steel shapes and plates shall conform to the requirements of ASTM designation A-36 except posts shall conform to ASTM A-500 Grade B, cap screws, and nuts shall conform to the requirements of ASTM designation A-307 except for high strength bolts, nuts and washers noted above shall conform to ASTM designation A-307.

3. All bolts, nuts, cap screws, washers and lock washers shall be galvanized in accordance with ASTM designation A-307.

4. All posts, rails, rail splices, anchor devices and curbs shall be galvanized after shop fabrication in accordance with ASTM A-307 and ASTM A-309. Galvanized rail shall not be painted.

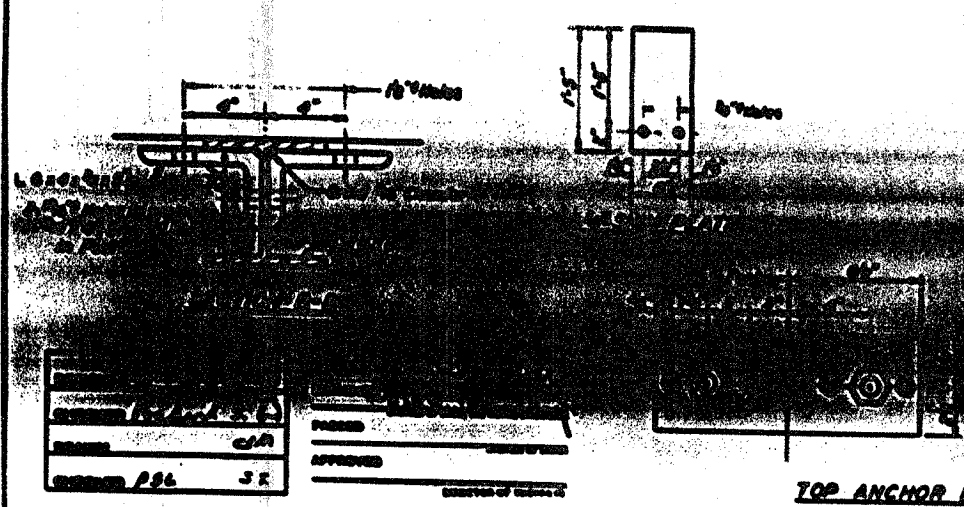
5. Rails shall be in accordance with Section 506 of the Standard Specifications, except as noted, and shall be paid for at the contract unit price per lineal foot for STEEL RAILING, TYPE T.

6. All holes drilled shall be coated with an approved zinc rich paint before erection.

7. The lower portion of the post flange in contact with concrete shall receive two coats of epoxy paint conforming to Section 704.02 Type B or place 1/2" fabric epoxy pad between the post and concrete.

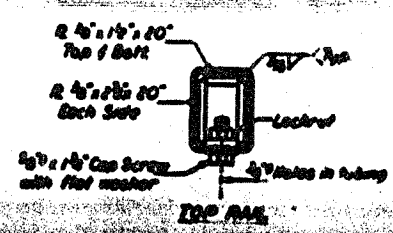
8. The 1/2" high strength bolts used to connect the 6 x 6 x 1/2 angles to the post shall be tightened in accordance with Article 702.1 of the Standard Specifications. The 1/2" high strength bolts connecting the angles to the concrete shall be tightened to a snug fit and given an additional 1/2 turn.

9. For multi-span bridges, sufficient 1/2" x 1/2" x 1/4" galvanized steel studs shall be provided to slip rail between adjacent spans. Care attention to Steel Railing.

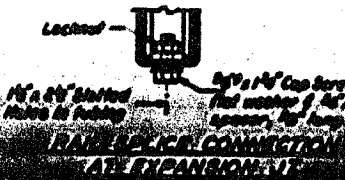


TOP ANCHOR DEVICE

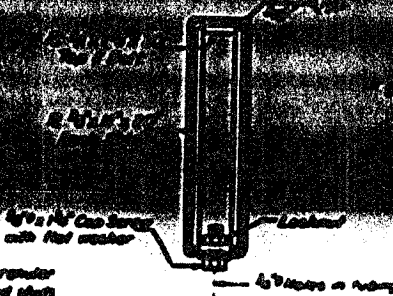
BOTTOM ANCHOR DEVICE



TOP RAIL



RAIL-TO-RAIL CONNECTION
(W/ EXPANSION)



BOTTOM RAIL

PLAN-BOTTOM SPlice R
TYPICAL

**CURB & RAIL
BILL OF MATERIAL**

Qty	No.	Size	Length	Shape
1	56	96	21'6"	
1	57	96	21'6"	
1	58	96	21'6"	
1	59	96	21'6"	
1	60	96	21'6"	
1	61	96	21'6"	
1	62	96	21'6"	
1	63	96	21'6"	
1	64	96	21'6"	
1	65	96	21'6"	
1	66	96	21'6"	
1	67	96	21'6"	
1	68	96	21'6"	
1	69	96	21'6"	
1	70	96	21'6"	
1	71	96	21'6"	
1	72	96	21'6"	
1	73	96	21'6"	
1	74	96	21'6"	
1	75	96	21'6"	
1	76	96	21'6"	
1	77	96	21'6"	
1	78	96	21'6"	
1	79	96	21'6"	
1	80	96	21'6"	
1	81	96	21'6"	
1	82	96	21'6"	
1	83	96	21'6"	
1	84	96	21'6"	
1	85	96	21'6"	
1	86	96	21'6"	
1	87	96	21'6"	
1	88	96	21'6"	
1	89	96	21'6"	
1	90	96	21'6"	
1	91	96	21'6"	
1	92	96	21'6"	
1	93	96	21'6"	
1	94	96	21'6"	
1	95	96	21'6"	
1	96	96	21'6"	
1	97	96	21'6"	
1	98	96	21'6"	
1	99	96	21'6"	
1	100	96	21'6"	

**TYPE T
STEEL RAILING
FACTORY FABRICATED
BROAD FLANGE
STATION 610500**