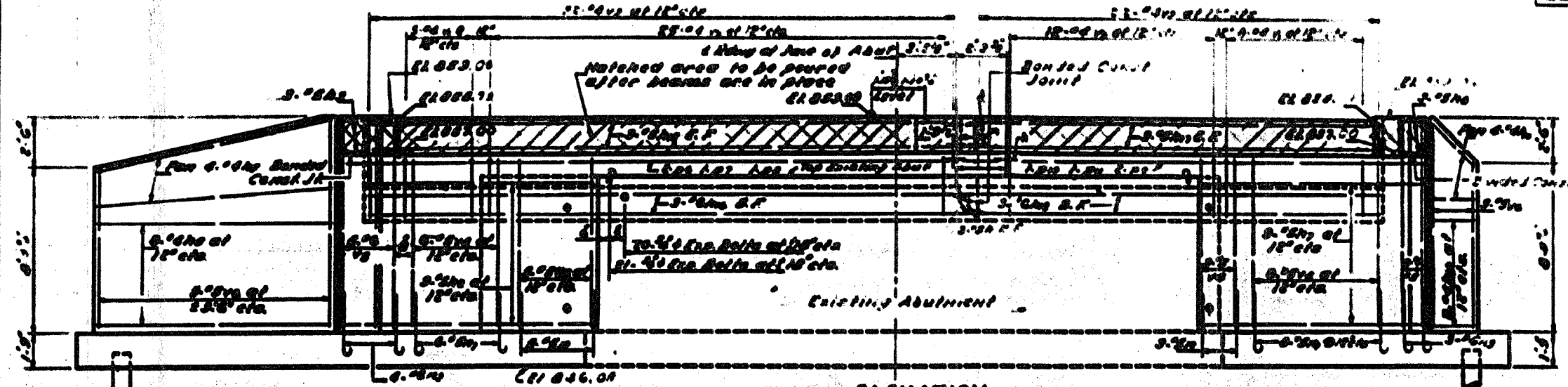


CONTRACT NO. 64800			
F.A.E. SECTION	COUNTY	TOTAL SHEETS	SHEET NO.
302 130BR-4	ROONE	147	71
STA. 428+00.0000 TO STA. 450+00.0000			
FED. ROAD DIST. NO. ILLINOIS		FED. AID PROJECT	

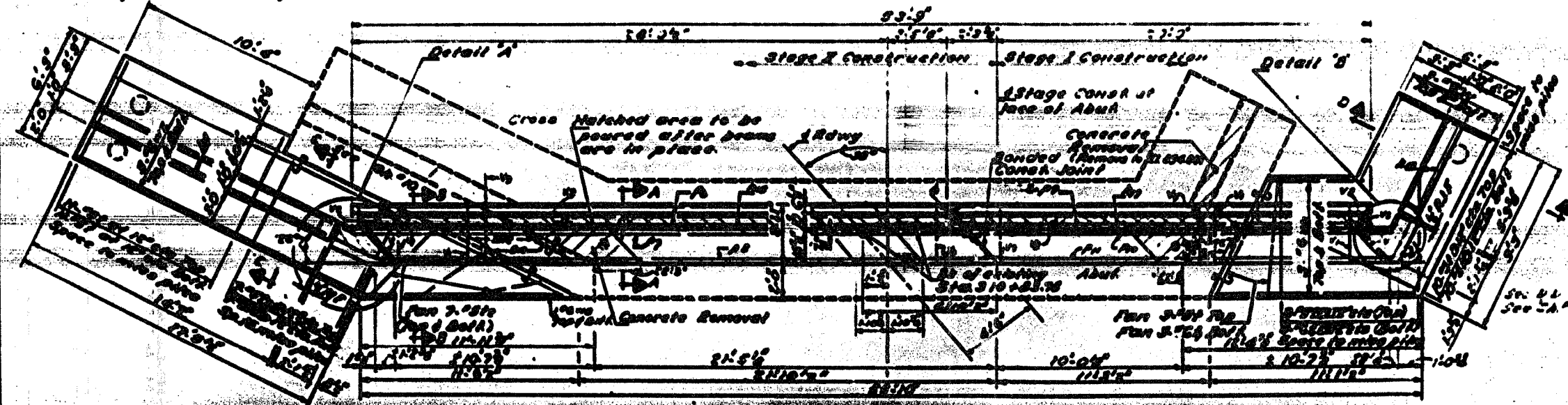
STATE OF ILLINOIS
DEPARTMENT OF TRANSPORTATION

DATE	BY	CHKD	APP'D
10/11/50	J. T. [Signature]	[Signature]	[Signature]

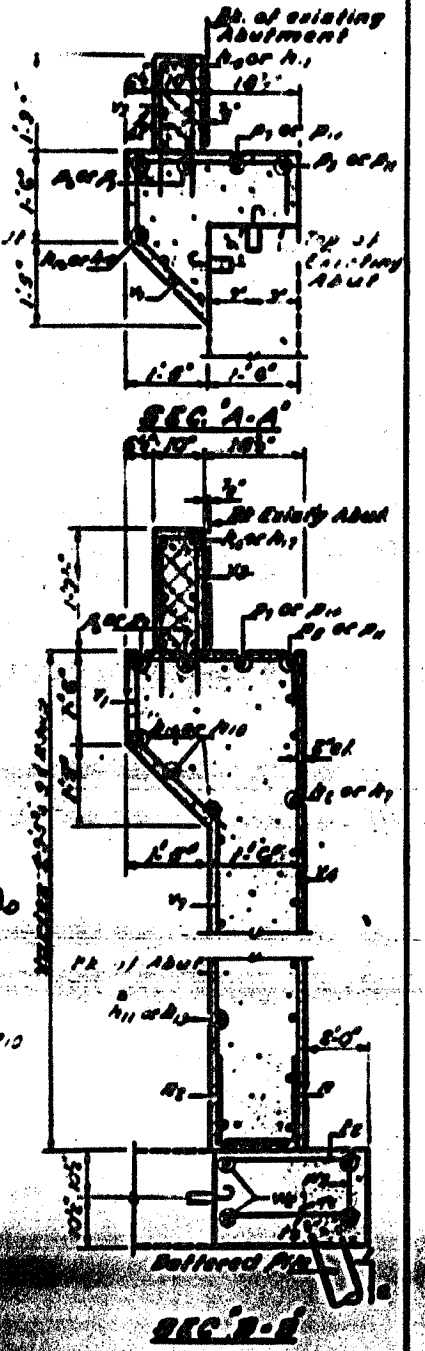


ELEVATION
Looking East

Note: Reinforcement Front Face (Unless otherwise shown) For reinforcement back face see sheet 71



PLAN



SEC. B-B

DESIGNED BY	APPROVED BY
Checked [Signature]	[Signature]
DESIGNED BY	APPROVED BY
[Signature]	[Signature]

DETAIL A

DETAIL B

EAST ABUTMENT
FOR 102' x 102' x 102' IS
ROONE COUNTY
STATION 428+00