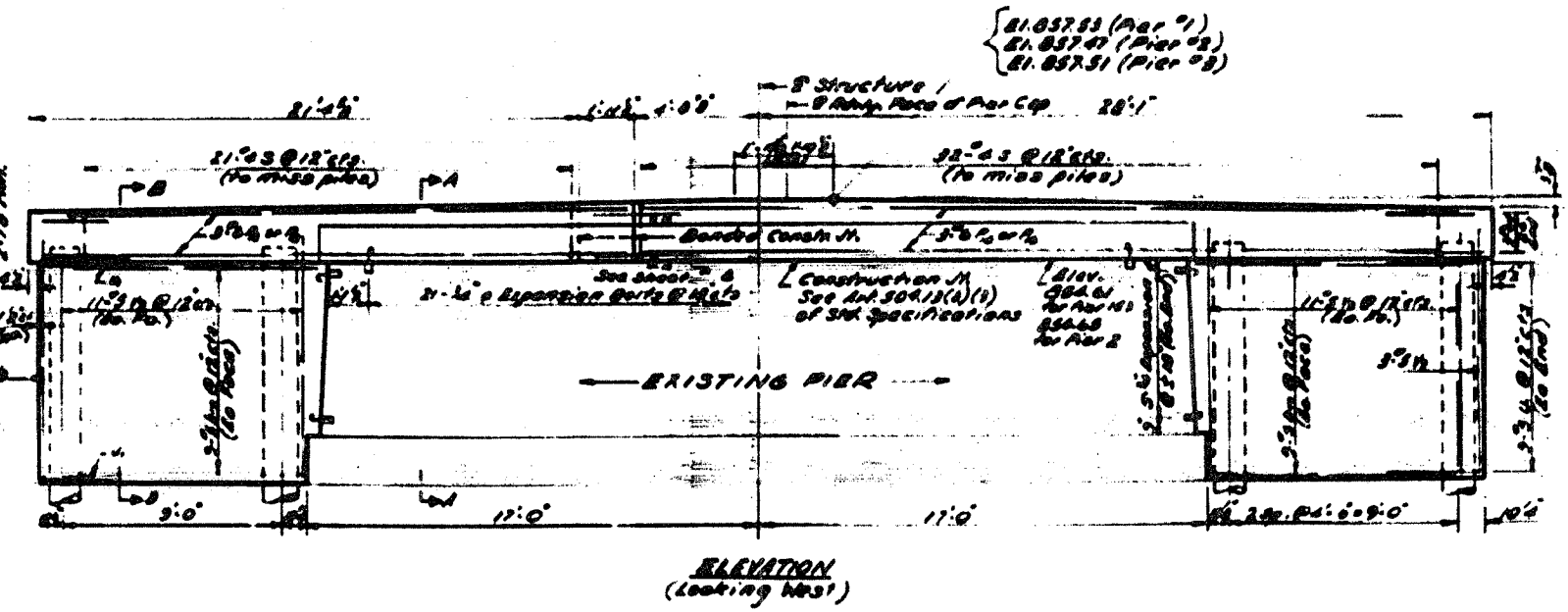
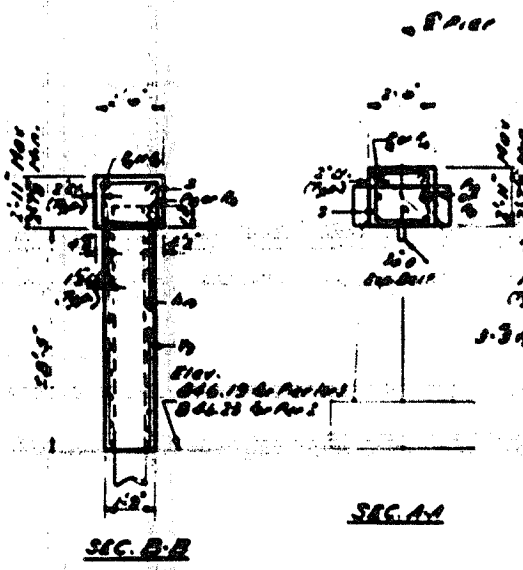
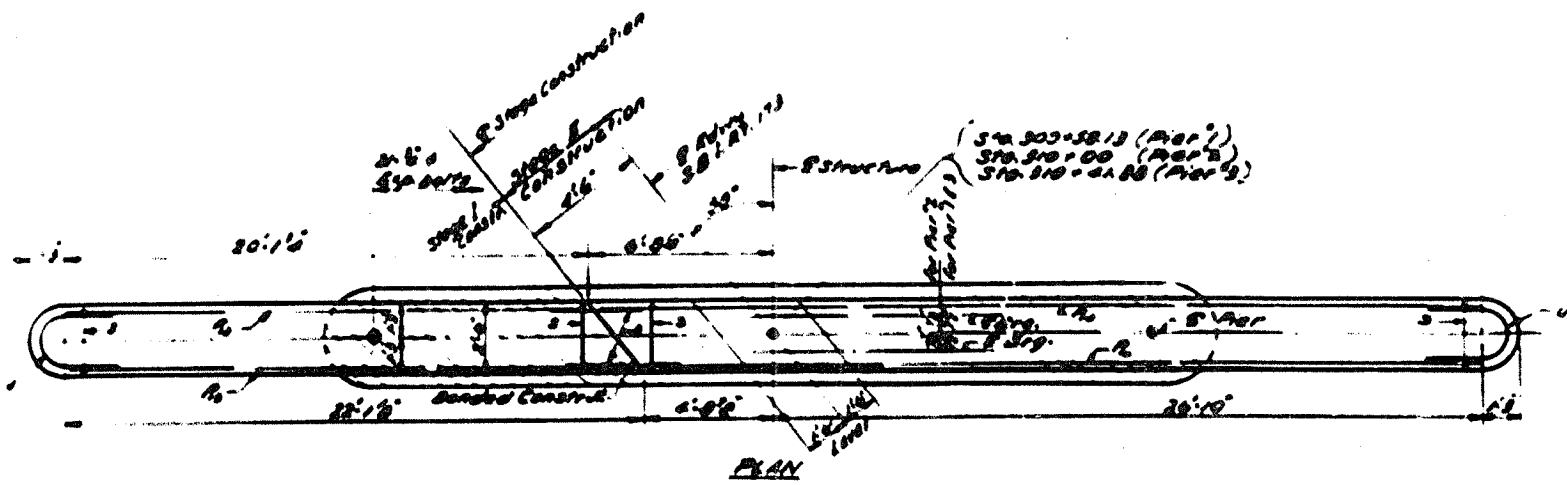


DATE	BY	CHKD	APPD
1978	118	118	118
NO.	1	1	1
REV.			

11 SHEETS

STATE OF ILLINOIS
 DEPARTMENT OF TRANSPORTATION

PILE DATA:
 Type: Concrete
 Capacity: 20 Tons
 Length: 20' @ Pier 1
 25' @ Pier 2
 20' @ Pier 3
 No. Piers: 17 Piers + 1 Test Pier @ Pier 2
 Note: Do not overdrive piles
 Metal shell option not permitted.

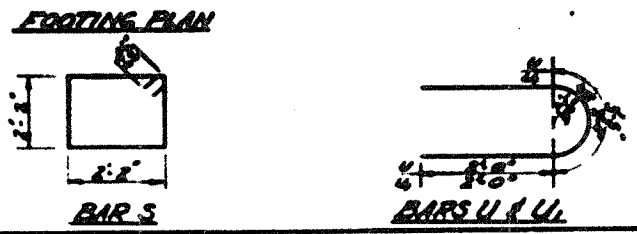
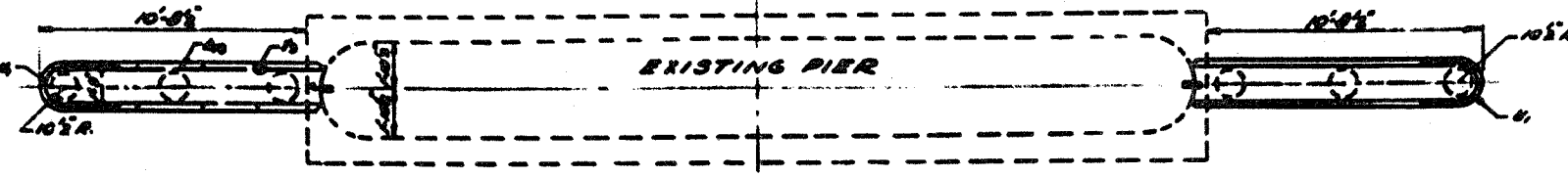


**THREE PIERS
 BILL OF MATERIAL**

Bar No.	Size	Length	Shape
A	18 #5	4'-0"	L
A ₂	100 #5	10'-5"	—
P ₁	9 #6	20'-0"	—
P ₂	9 #6	22'-0"	—
P ₃	9 #6	22'-5"	—
P ₄	9 #6	21'-5"	—
S	150 #4	9'-5"	□
U	18 #6	7'-5"	U
U ₂	54 #6	6'-4"	U
V	150 #5	9'-0"	—

Class 1 Concrete Cu Yds. 696
 Reinforcement Bars Lbs. 8800
 Concrete Piles Lin. Ft. 419
 Test Piles Concrete Each 1
 Expansion Joints/FCSA Each 93
 Concrete Removal Cu Yds. 16.9

NOTE:
 Hatched area indicates concrete removal. Reinforcement extending into removed area shall be cleaned and incorporated into the new construction. Expansion bolts shall be anchored in sound concrete. All caps shall have standard 1/2" chamfers except as noted.



DESIGNED	DATE
Checked	12/21/82
Checked	
Checked	
Checked	

PIERS 1, 2 & 3
 S.B.L. RT. 173 SEC. 130B-1R
 BOONE COUNTY
 STA. 370+00