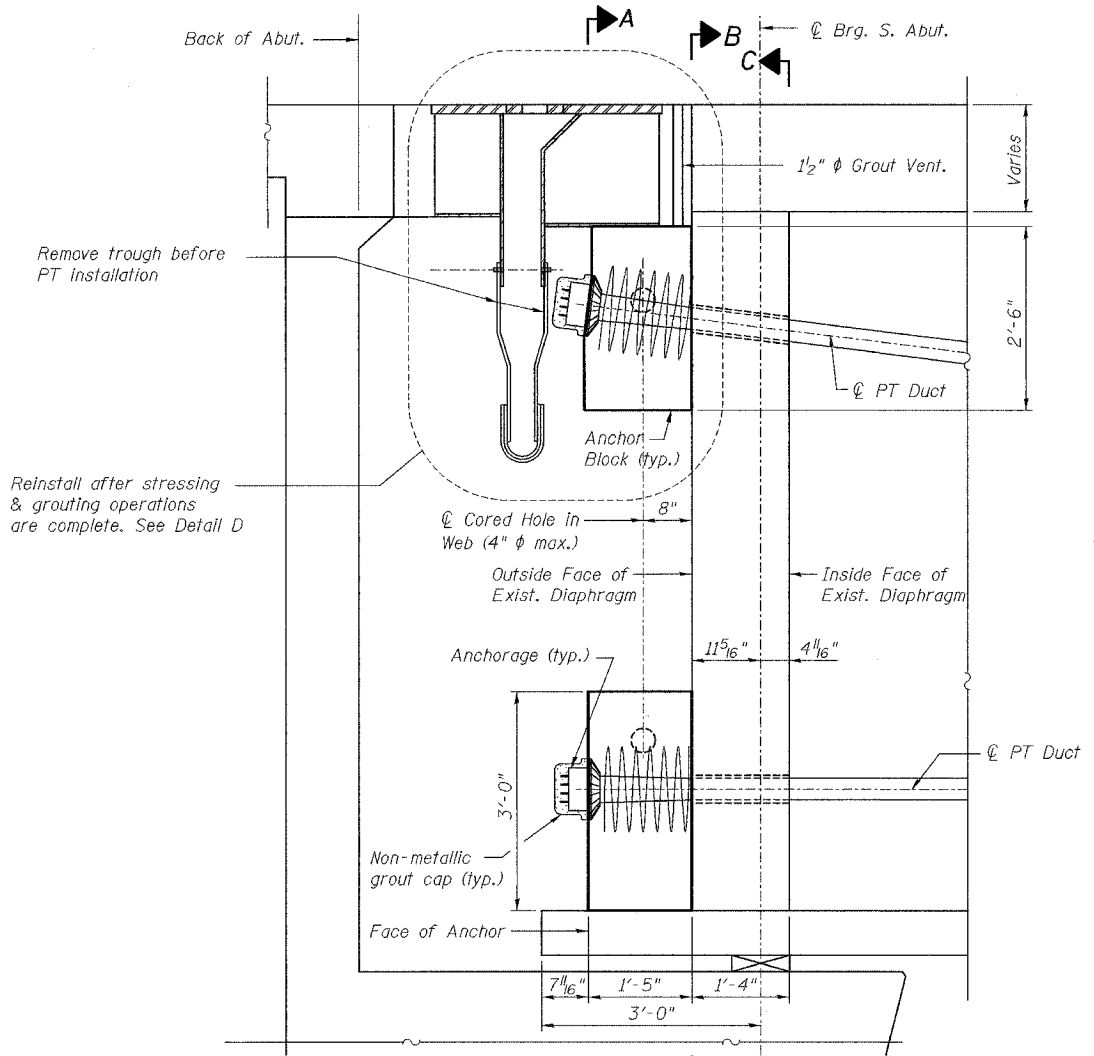


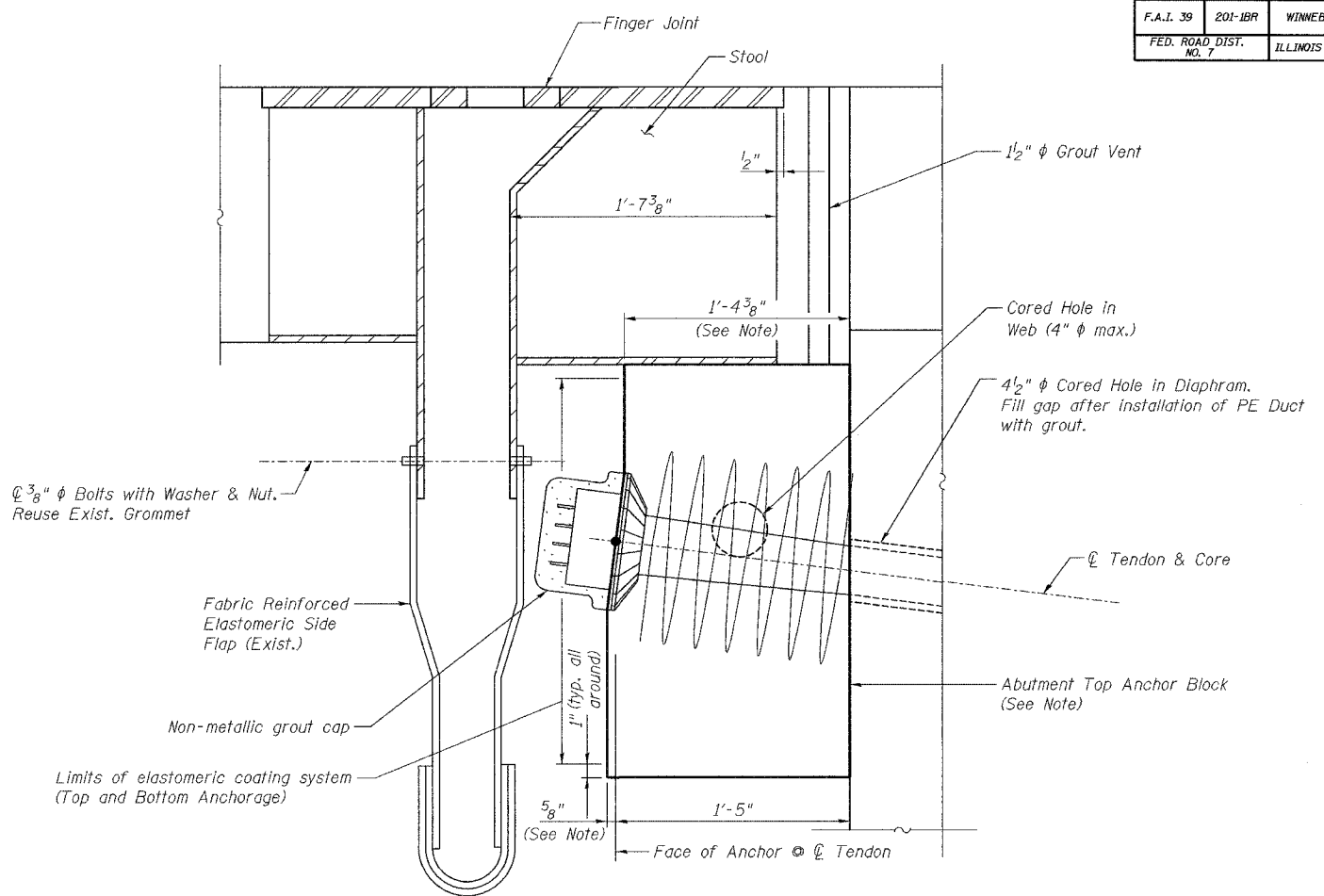
ROUTE NO.	SECT.	COUNTY	SHEET NO.	TOTAL SHEETS
F.A.I. 39	201-1BR	WINNEBAGO	18	40
FED. ROAD DIST. NO. 7	ILLINOIS	FED. AID PROJECT	CONTRACT NO. 64857	

Date: 3/16/2007

Filename: P:\646265-KISHWAUKEE-WFF\CADD\Final\Sheet\stobd\01s.sht



LONGITUDINAL SECTION AT ABUTMENT
(South Abutment Shown, North Abutment opposite hand)



DETAIL D

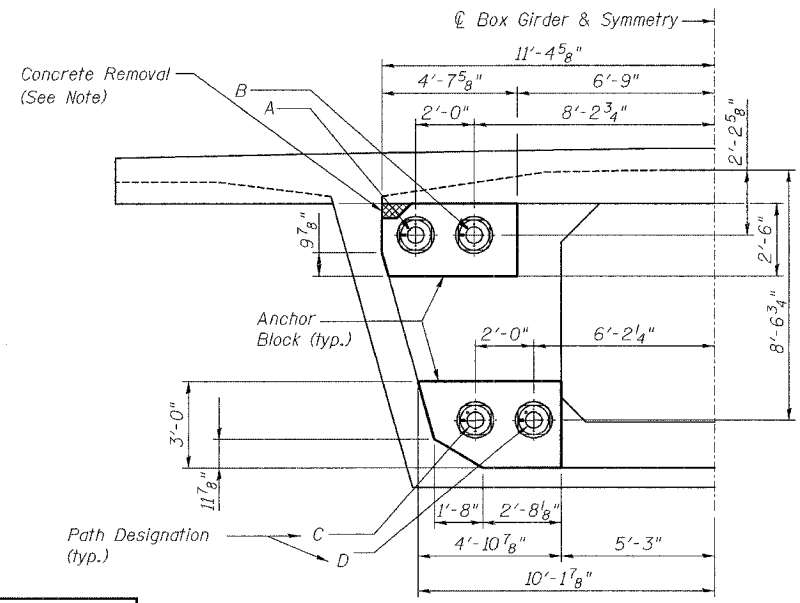
NOTES:

Abutment Top Anchor Block for the Northbound Bridge shall not be poured until the Finger Joint Replacement work has been completed and the concrete of the joint pour reached its 28-day compressive strength.

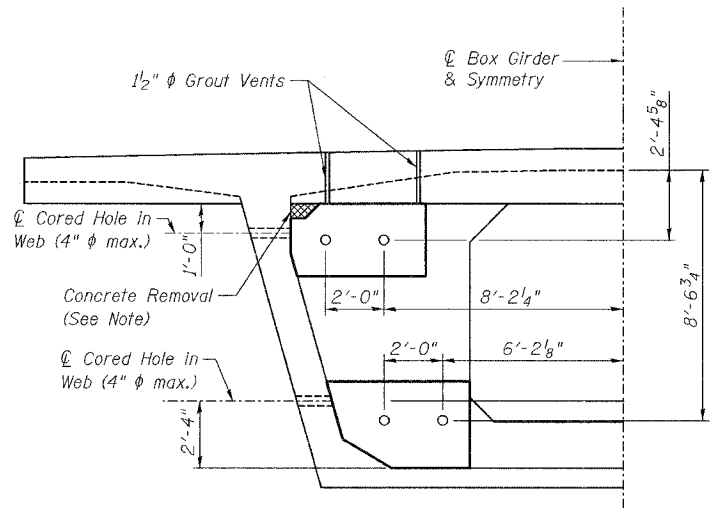
Dimensions may vary with selected anchorage type.

Concrete removal shall be performed to the limits indicated. Cost included in "Furnishing and Installing Post-Tensioning System".

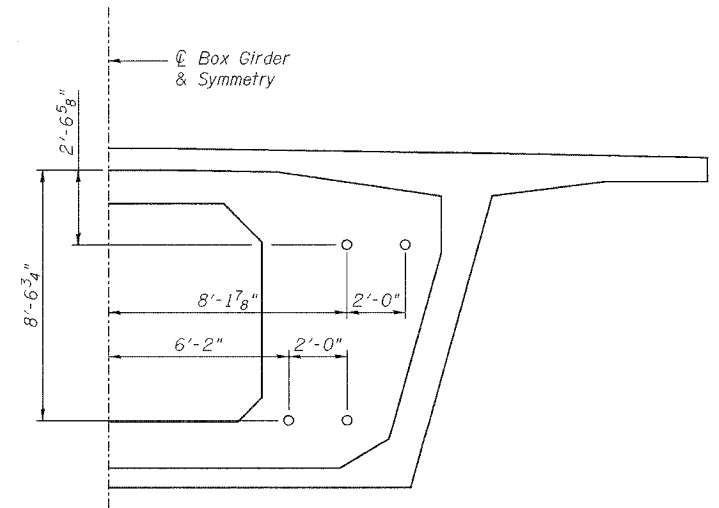
Cost for coring holes in web and 1/2" grout vents shall be included with "Concrete Superstructure".



SECTION A-A
(At Face of Anchor)



SECTION B-B
(At Outside Face of Diaphragm)



SECTION C-C
(At Inside Face of Diaphragm)

Designed by:	WEE
Checked by:	DL
Drafted by:	HH
Checked by:	DL

REVISION	DATE	DESCRIPTION
STATE OF ILLINOIS DEPARTMENT OF TRANSPORTATION		
ABUTMENT ANCHORAGE GEOMETRY		
I-39 (FAI 39) OVER KISHWAUKEE RIVER SECTION 201-1BR WINNEBAGO COUNTY STATION 2425+00 STRUCTURE NOS. 101-0133 (S.B.) & 101-0134 (N.B.)		
PARSONS		CHICAGO, ILLINOIS
DRAWING NO. 18	SCALE N.T.S.	DATE FEB 2007
		SHEET NO. S-7