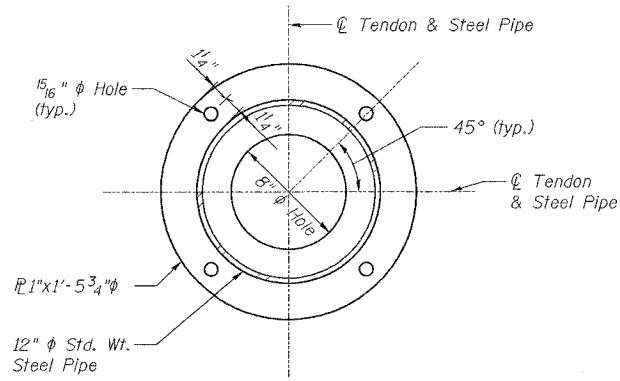
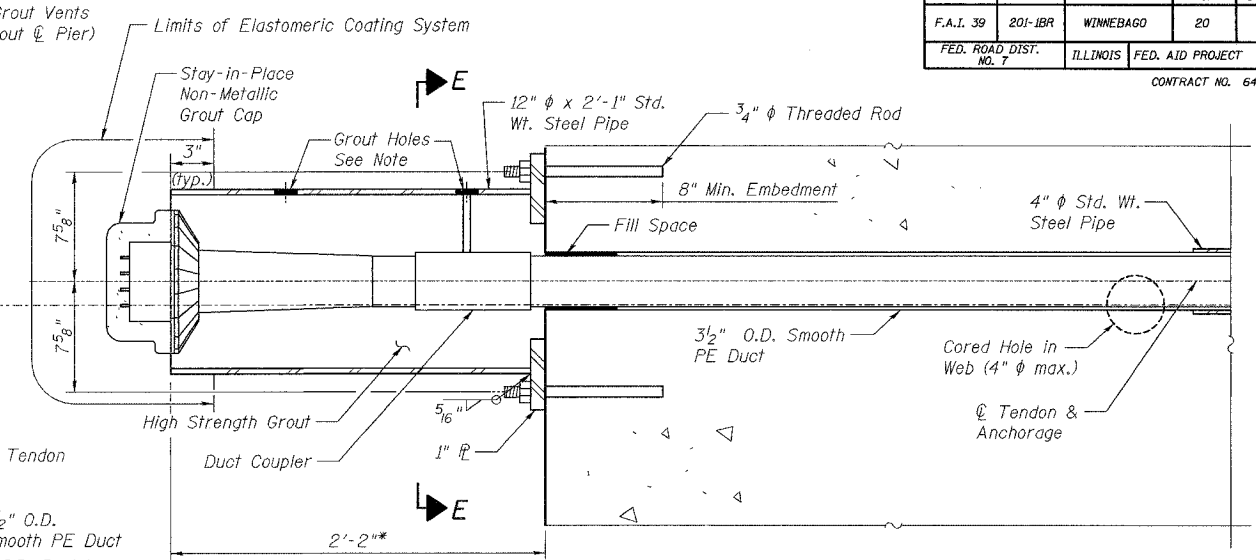
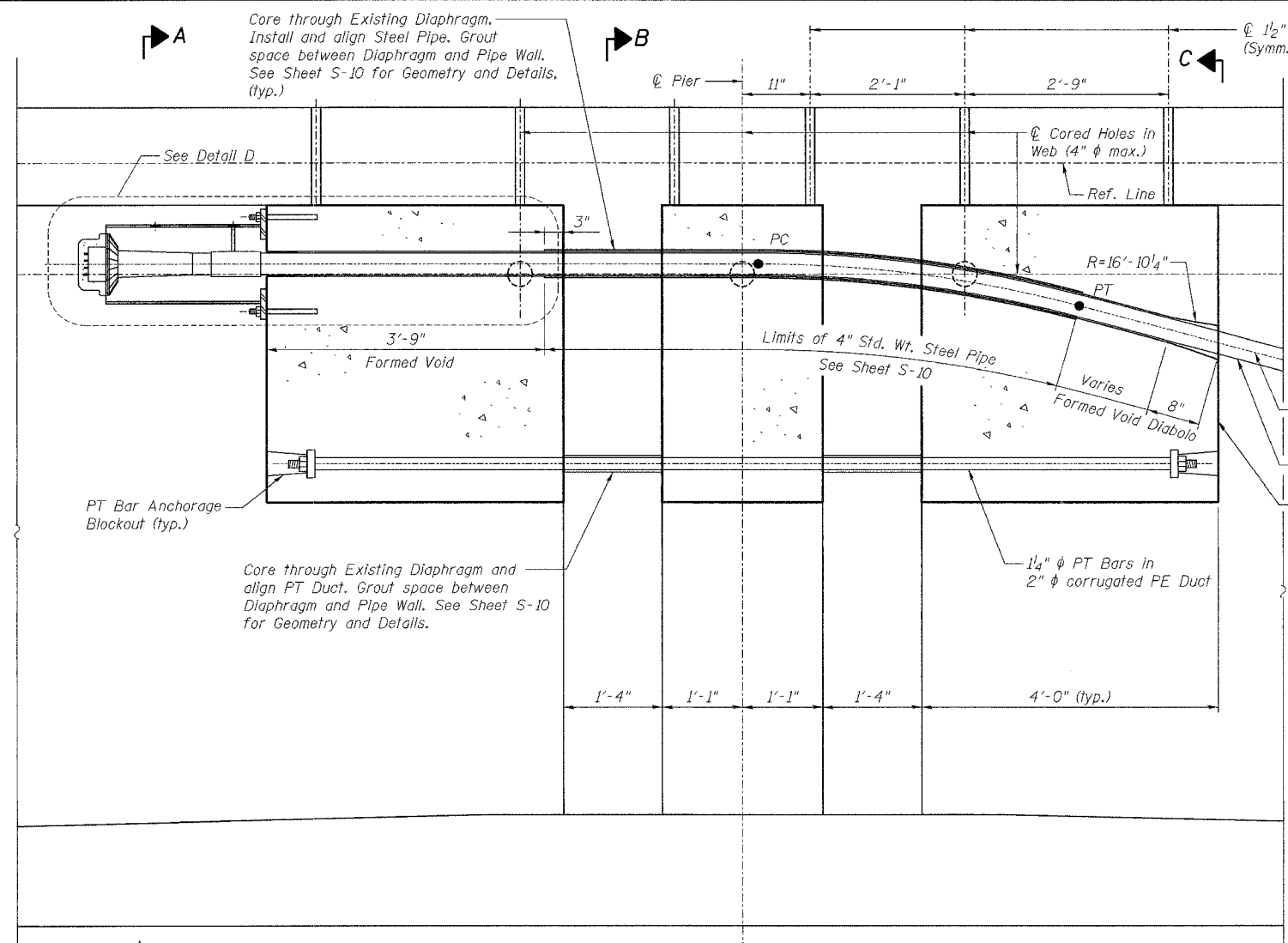


ROUTE NO.	SECT.	COUNTY	SHEET NO.	TOTAL SHEETS
F.A.I. 39	201-IBR	WINNEBAGO	20	40
FED. ROAD DIST. NO. 7	ILLINOIS	FED. AID PROJECT	CONTRACT NO. 64857	

Date: 2/2/2007 Time: 4:38:07 PM



**DETAIL D**  
**PIER DEVIATOR CONSTRUCTION SEQUENCE**

- 1 Core holes in existing pier diaphragms
- 2 Install and align bent steel pipes & PT bar ducts
- 3 Grout space between pipes/ducts and cored holes
- 4 Cast pier deviator blocks
- 5 Install and stress PT bars
- 6 Install smooth PE ducts
- 7 Install anchorage assembly in steel pipe, splice to duct and grout in place
- 8 Install and stress tendons
- 9 Install stay-in-place non-metallic grout caps
- 10 Grout tendons and anchor caps

**NOTES:**  
Location of existing PT Bars to be determined by Contractor using non-destructive methods for approval by the Engineer. No drilling or coring is permitted without approval by the Engineer.

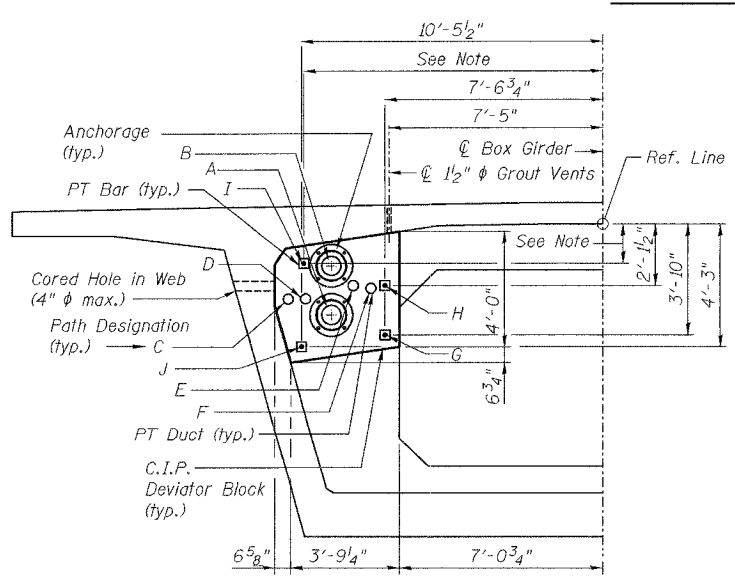
Sections at Piers 1 and 2 are shown. Sections at Piers 3 and 4 are similar but in opposite hand.

For tendon paths and PT bar path 'I', see Sheet S-10.

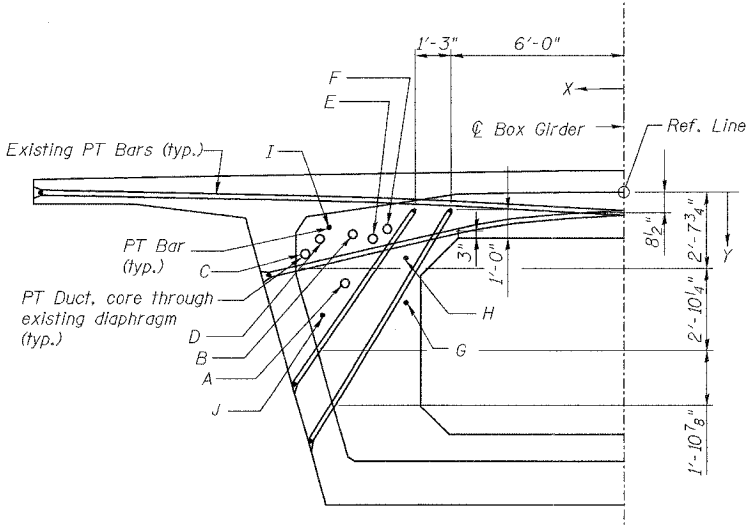
Cost for coring holes in web and 1/2" grout vents shall be included with "Concrete Superstructure".

Smooth PE Duct shall run continuous through the deviator.

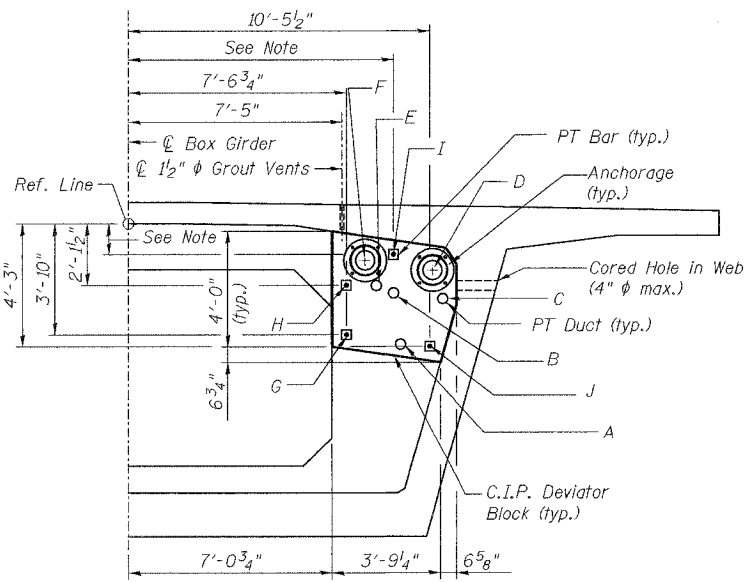
Contractor to coordinate with PT Supplier for size and location of grout holes.



**SECTION A-A**



**SECTION B-B**



**SECTION C-C**

Designed by: WEE  
Checked by: DL  
Drafted by: HH  
Checked by: DL

REVISION	DATE	DESCRIPTION
<b>STATE OF ILLINOIS</b> <b>DEPARTMENT OF TRANSPORTATION</b> <b>PIER DEVIATOR GEOMETRY I</b> I-39 (FAI 39) OVER KISHWAUKEE RIVER SECTION 201-IBR WINNEBAGO COUNTY STATION 2425+00 STRUCTURE NOS. 101-0133 (S.B.) & 101-0134 (N.B.)		
<b>PARSONS</b>		CHICAGO, ILLINOIS
DRAWING NO. 20	SCALE N.T.S.	DATE FEB 2007
		SHEET NO. S-9