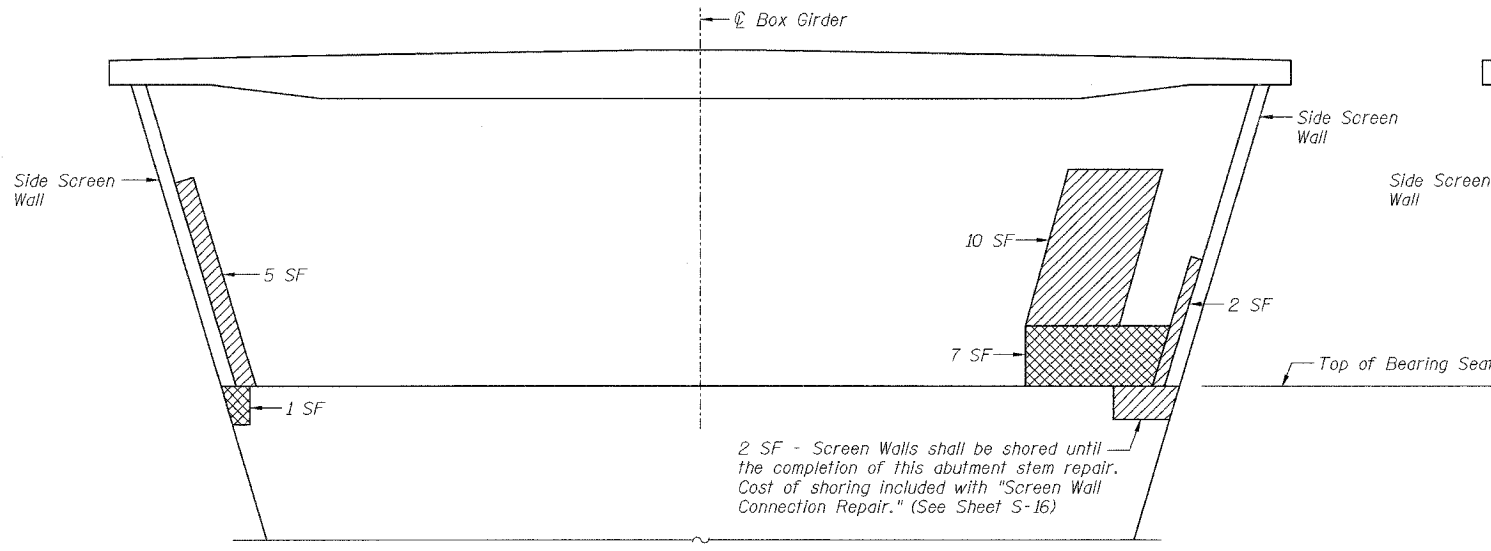


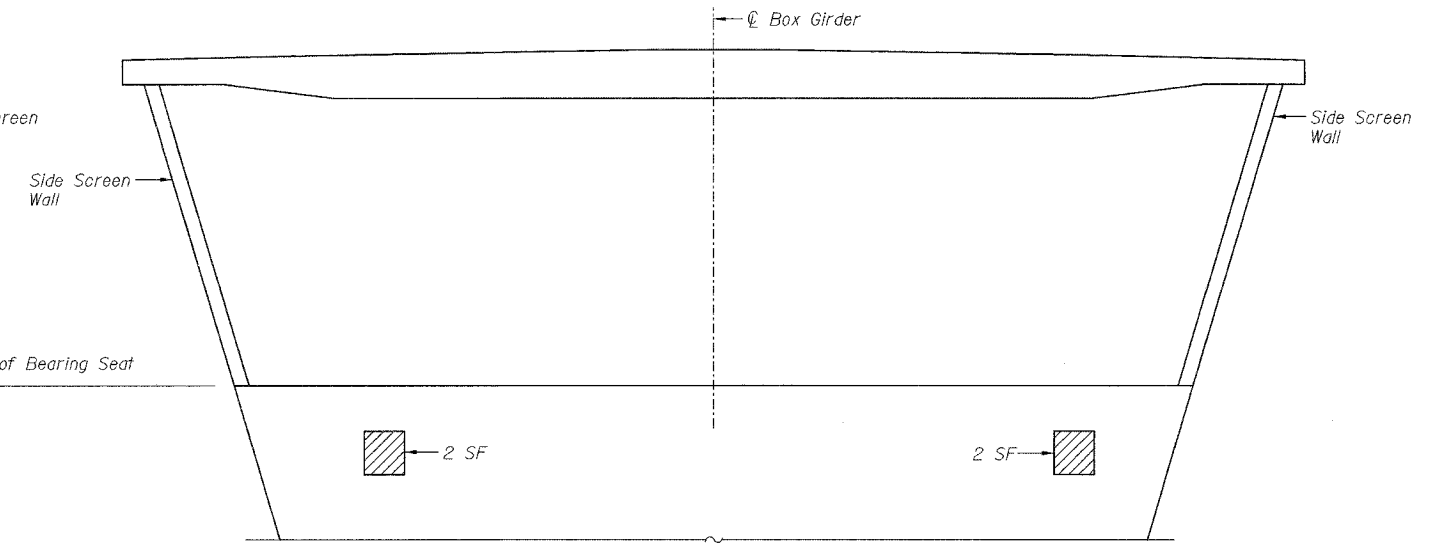
ROUTE NO.	SECT.	COUNTY	SHEET NO.	TOTAL SHEETS
F.A.I. 39	201-1BR	WINNEBAGO	26	40
FED. ROAD DIST. NO. 7	ILLINOIS	FED. AID PROJECT		
CONTRACT NO. 64857				

Date: 2/2/2007 Time: 4:23:12 PM

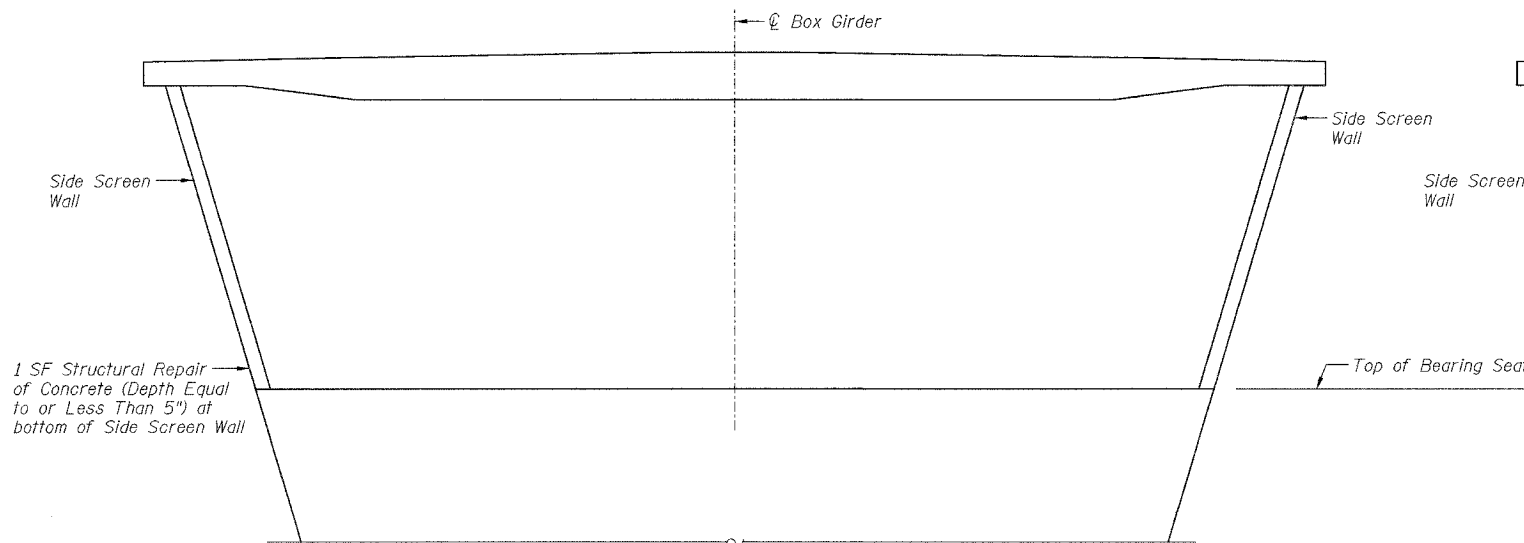
Filename: p:\648265-Kishwaukee-mr-f.cadd\final\sheet\stbrp02a.sht



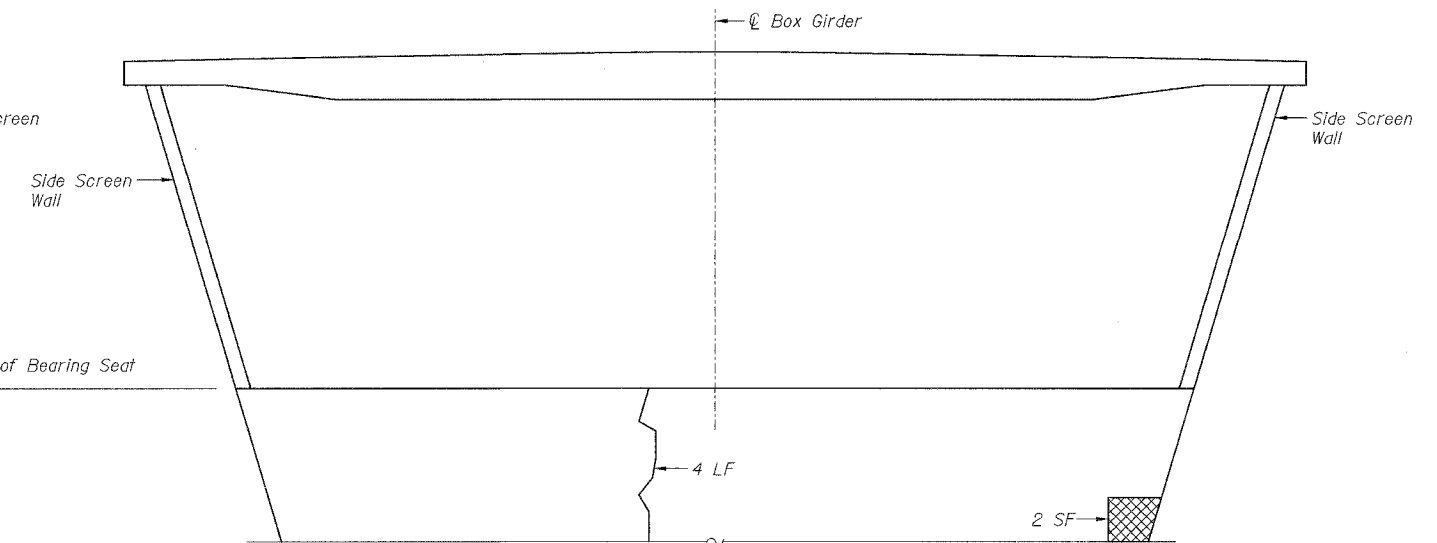
**SOUTHBOUND BRIDGE  
NORTH ABUTMENT BACKWALL AND STEM**



**SOUTHBOUND BRIDGE  
SOUTH ABUTMENT BACKWALL AND STEM**



**NORTHBOUND BRIDGE  
NORTH ABUTMENT BACKWALL AND STEM**



**NORTHBOUND BRIDGE  
SOUTH ABUTMENT BACKWALL AND STEM**

**LEGEND**

- Structural Repair of Concrete (Depth Equal to or Less Than 5")
- Structural Repair of Concrete (Depth Greater Than 5")
- Epoxy Crack Injection

**BILL OF MATERIAL**

Description	Unit	Stage 1 SB	Stage 2 NB	Total Quantity
Structural Repair of Concrete (Depth Equal to or Less Than 5")	Sq.Ft.	23	1	24
Structural Repair of Concrete (Depth Greater Than 5")	Sq.Ft.	8	2	10
Epoxy Crack Injection	Lin.Ft.	0	4	4

**NOTE:**

Areas of reinforcement to be replaced as described in "Structural Repair of Concrete" shall be determined by the Contractor and approved by the Engineer.

Designed by: HT  
Checked by: DAZ  
Drafted by: SAW  
Checked by: HT

REVISION	DATE	DESCRIPTION
STATE OF ILLINOIS DEPARTMENT OF TRANSPORTATION		
ABUTMENT REPAIRS		
I-39 (FAI 39) OVER KISHWAUKEE RIVER SECTION 201-1BR WINNEBAGO COUNTY STATION 2425+00 STRUCTURE NOS. 101-0133 (S.B.) & 101-0134 (N.B.)		
<b>PARSONS</b>		CHICAGO, ILLINOIS
DRAWING NO. 26	SCALE N.T.S.	DATE FEB 2007
		SHEET NO. S-15