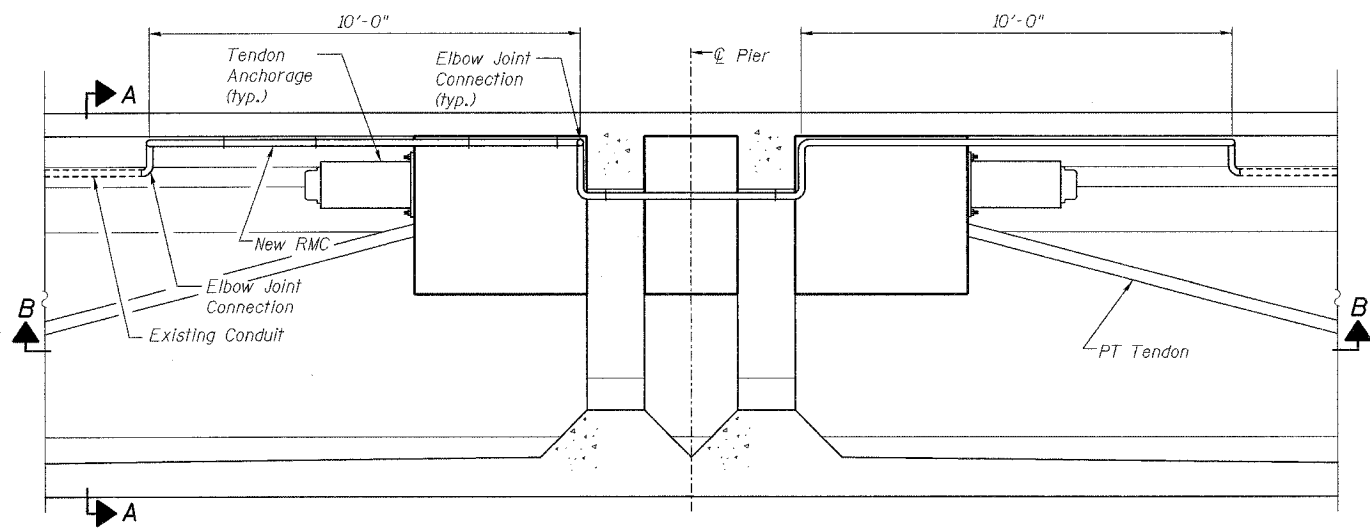
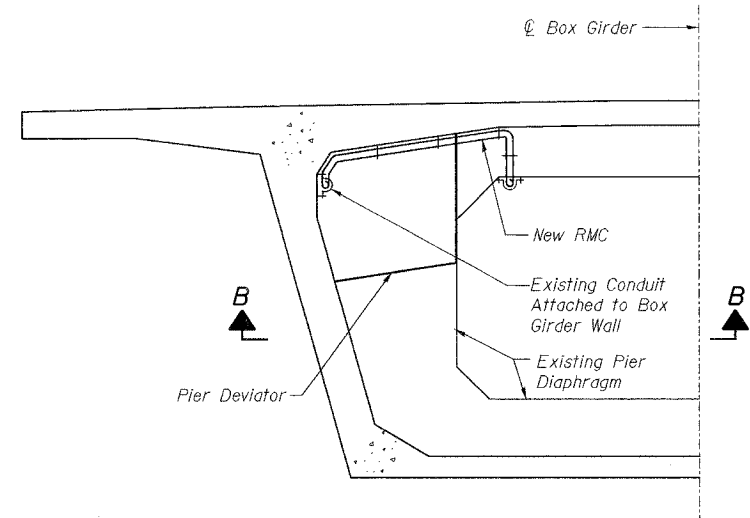


ROUTE NO.	SECT.	COUNTY	SHEET NO.	TOTAL SHEETS
F.A.I. 39	201-IBR	WINNEBAGO	40	40
FED. ROAD DIST. NO. 7	ILLINOIS	FED. AID PROJECT		

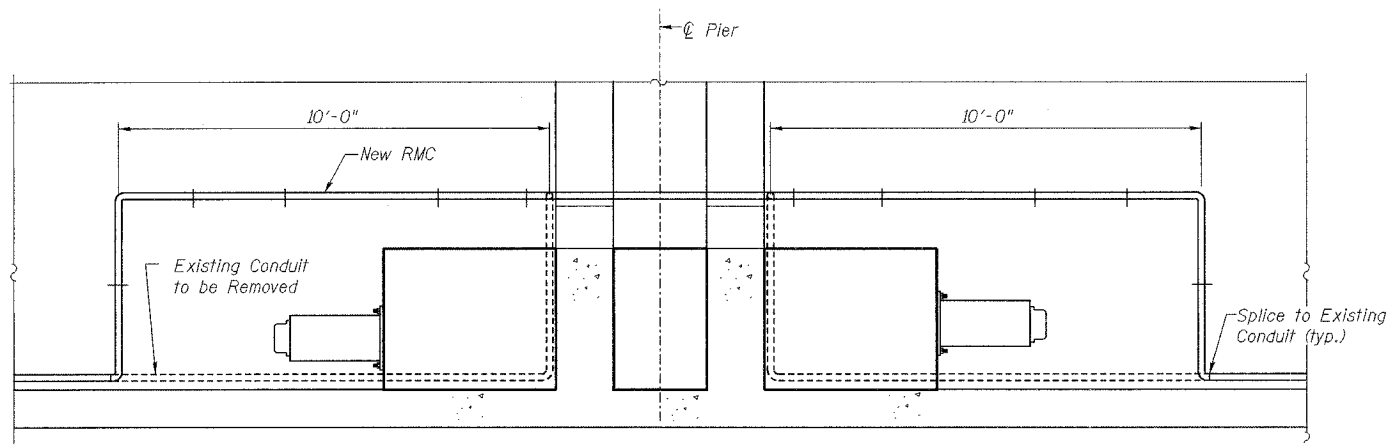
CONTRACT NO. 64857



**LONGITUDINAL SECTION AT PIER**



**SECTION A-A**



**SECTION B-B**

**BILL OF MATERIAL**

Item	Unit	Stage 1 SB	Stage 2 NB	Total Quantity
Relocate Existing Electrical System	L. Sum	0.5	0.5	1.0

**NOTES:**

The conduit rerouting plan shown is intended to provide general requirements for relocating the existing conduits to avoid work areas. The Contractor shall confirm the number and location of existing conduits in the field.

The Contractor shall get the approval of the Engineer prior to relocating conduit.

All new conduit provided in order to complete the relocating operations shall be galvanized rigid steel conduit (RMC) of equivalent size to the conduit it is replacing.

REVISION	DATE	DESCRIPTION
<b>STATE OF ILLINOIS</b> <b>DEPARTMENT OF TRANSPORTATION</b> <b>RELOCATION ELECTRICAL CONDUITS</b> I-39 (FAI 39) OVER KISHWAUKEE RIVER SECTION 201-IBR WINNEBAGO COUNTY STATION 2425+00 STRUCTURE NOS. 101-0133 (S.B.) & 101-0134 (N.B.)		
		CHICAGO, ILLINOIS
DRAWING NO. 40	SCALE N.T.S.	DATE FEB 2007
		SHEET NO. E-1

Date: 2/2/2007 Time: 3:46:57 PM  
 File name: p:\646265-kishwaukee-river\final\sheet\air\eco01s.sh

Designed by:	GV
Checked by:	BM
Drafted by:	RKS
Checked by:	BM