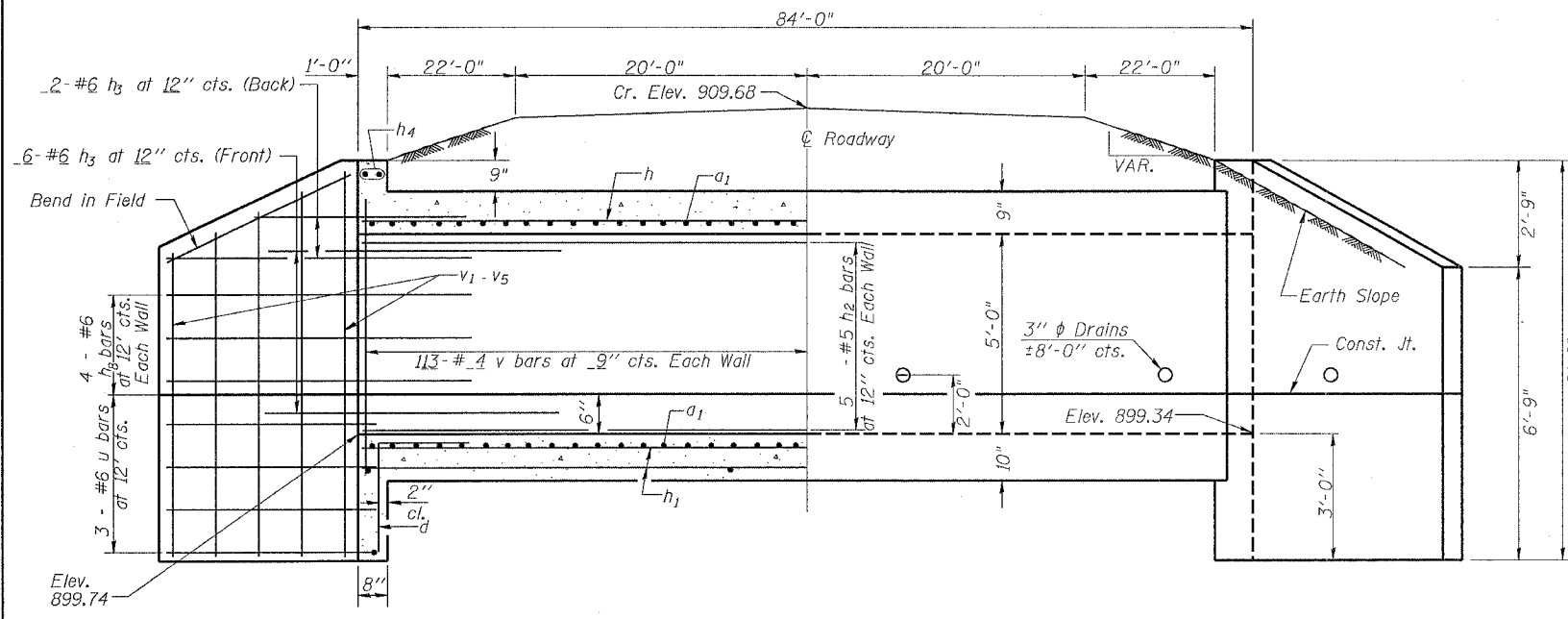


STATE OF ILLINOIS  
DEPARTMENT OF TRANSPORTATION

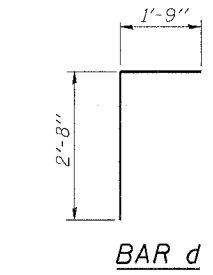
ROUTE NO.	SECTION	COUNTY	DATE	SHEET NO.
301	217-1	STEPHENSON	64	37
FED. ROAD DIST. NO. 7	ILLINOIS	FED. AID PROJECT-		

Contract # 64B48

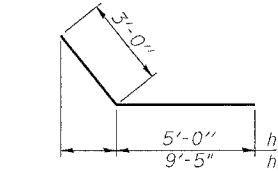


HALF LONG. SECTION

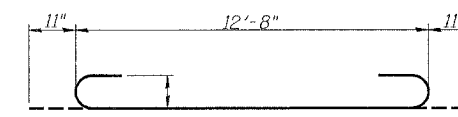
HALF ELEVATION



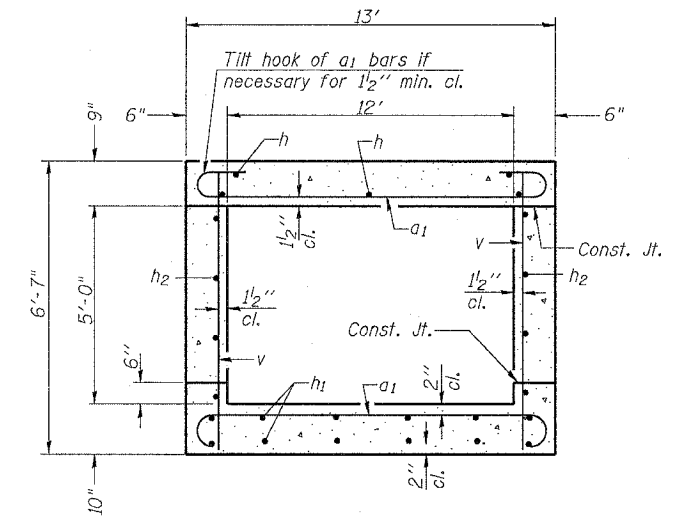
BAR d



BARS h3 & h8



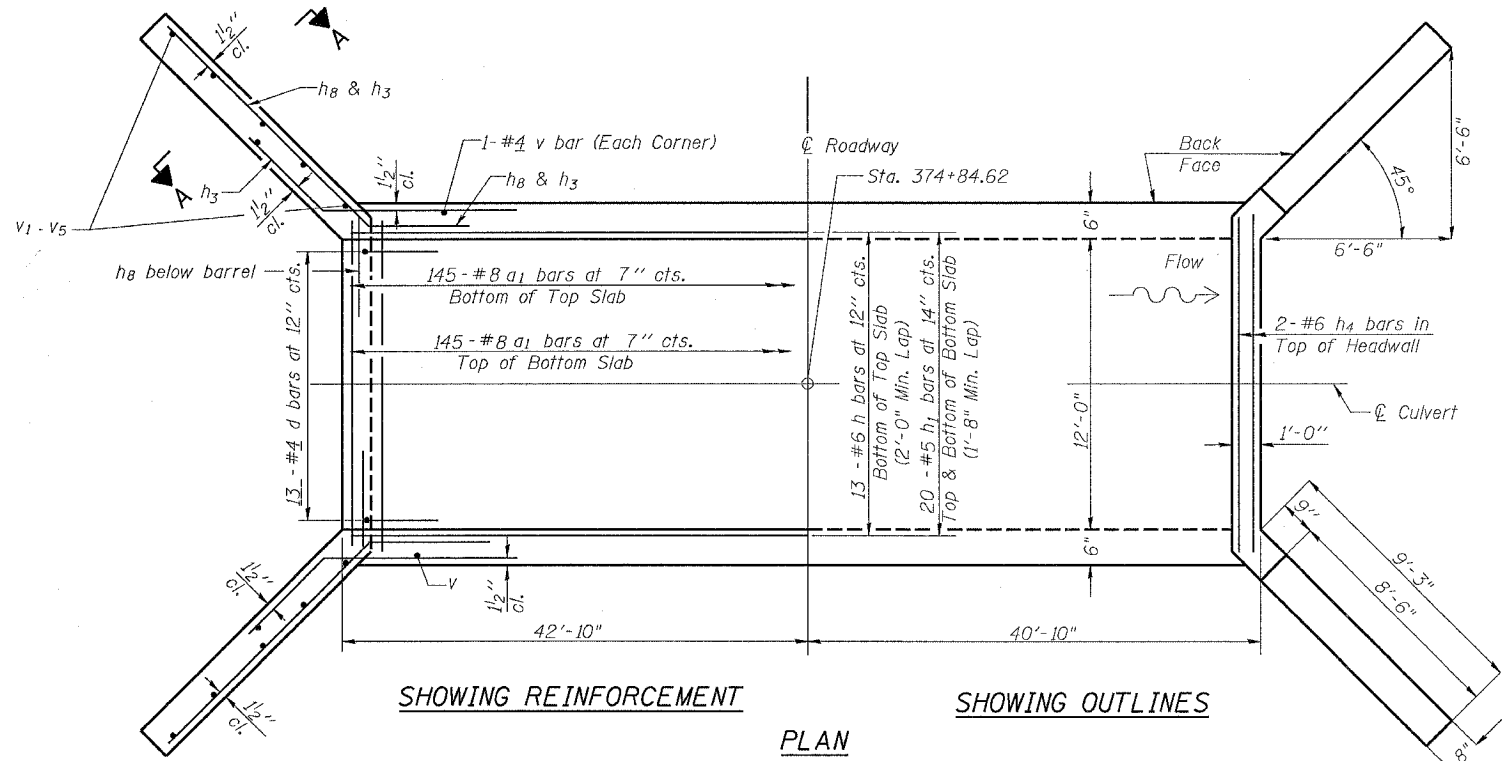
BAR a1



SECTION THRU BARREL

BILL OF MATERIAL

Bar	No.	Size	Length	Shape
a1	290	#8	14'-6"	
d	13	#4	4'-6"	
h (Stage I)	13	#6	40'-10"	—
h1 (Stage I)	22	#5	40'-10"	—
h2 (Stage I)	10	#5	40'-10"	—
h (Stage II)	13	#6	42'-10"	—
h1 (Stage II)	22	#5	42'-10"	—
h2 (Stage II)	10	#5	42'-10"	—
h3	16	#6	8'-0"	—
h4	14	#6	3'-6"	—
h5	4	#6	5'-10 1/3"	—
h8	12	#6	12'-5"	—
u	3	#6	31'-6 2/32"	
v	226	#4	6'-2"	—
v1	4	#4	6'-5 3/4"	—
v2	4	#4	7'-2 5/8"	—
v3	8	#4	7'-11 3/8"	—
v4	4	#4	8'-10 9/16"	—
v5	4	#4	9'-2 3/32"	—
Concrete Box Culverts			Cu. Yd.	86.1
Reinforcement Bars			Pound	17418.7
Name Plate			Each	1



SHOWING REINFORCEMENT

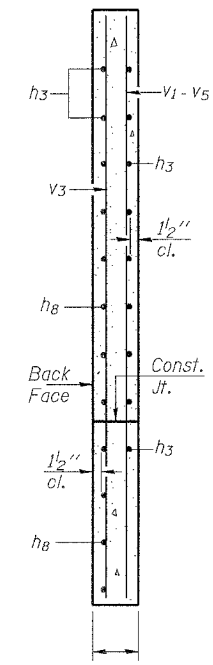
SHOWING OUTLINES

PLAN

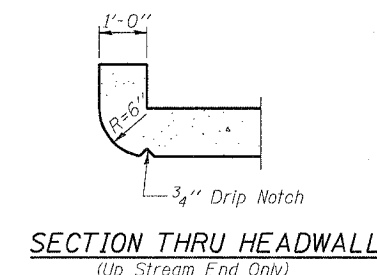
NOTES

A distance of half the length of the wingwall but not less than six feet of the barrel shall be poured monolithically with the wingwalls.  
Reinforcement Bars shall conform to the requirements of AASHTO M-31, M-42 or M-53, Grade 60.  
Bars indicated thus 12 x 4-#5 etc. indicates 12 lines of bars with 4 lengths per line.  
All construction joints shall be bonded.  
Design fill height = 6.5'  
Bar splicers shall be installed at the staging line as shown on sheets 15 & 16

DESIGNED - TRACI HELFRICH	2006
CHECKED -	EXAMINED
DRAWN -	PASSED
CHECKED -	ENGINEER OF BRIDGES AND STRUCTURES



SECTION A-A



SECTION THRU HEADWALL  
(Up Stream End Only)

DESIGN STRESSES

fy = 60,000 psi  
f'c = 3,500 psi

LOADING HS 20-44 & ALT.

PLOT DATE = Wed Jan 17 14:44:02 2007  
FILE NAME = c:\p20\mca\211105\1105\1105.dgn  
PLOT SCALE = 4.000000 / IN.  
USER NAME = dztier