

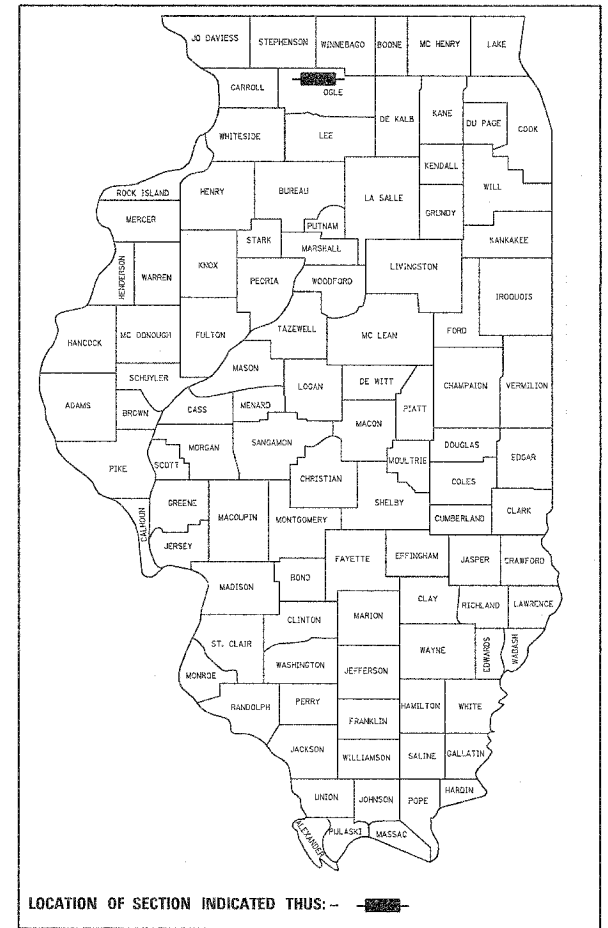
F.A.P. RTE.	SECTION	COUNTY	TOTAL SHEETS	SHEET NO.
549	117BR-M	OGLE	15	1

STATE OF ILLINOIS
DEPARTMENT OF TRANSPORTATION
DIVISION OF HIGHWAYS

**PROPOSED
HIGHWAY PLANS**

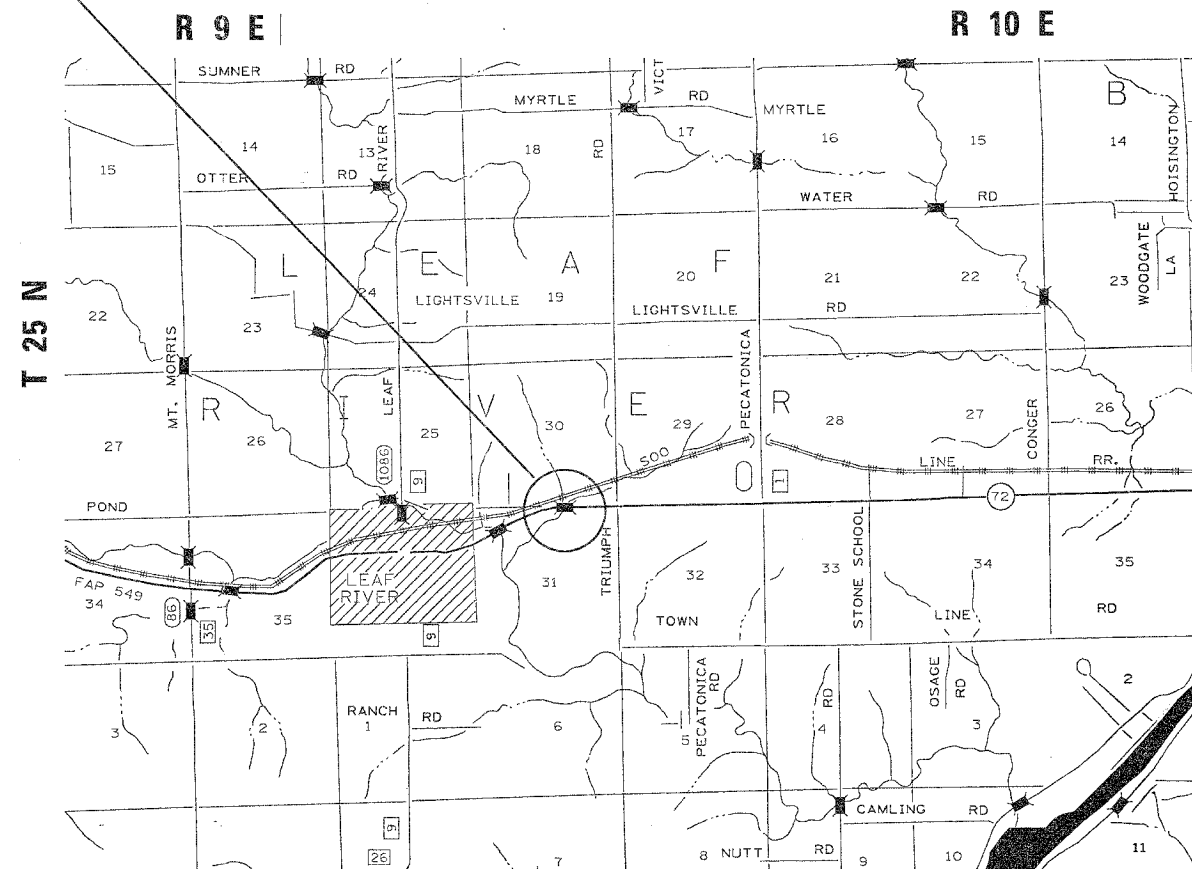
FAP ROUTE 549 (IL 72)
SECTION 117BR-M
OGLE COUNTY

D-92-025-06



Project Location
Structure No. 071-0068

C-92-133-06

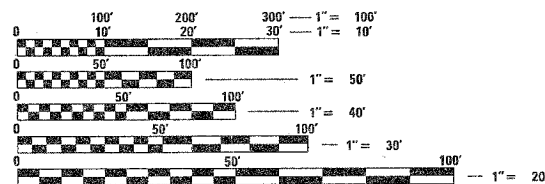


INDEX OF SHEETS

- Cover Sheet, Index of Sheets, Standards
- Summary of Quantities
- General Notes
- Roadway Plan
- Traffic Control Plan - Stage I
- Traffic Control Plan - Stage II
- Bridge Plans
- General Plan and Elevation
- Deck Plan and Cross Section
- Partial Joint Plan
- Joint Details
- Bar Splicer Assembly Details
- Stop Line Sign for Temporary Signals
- PPC Deck Beam Replacement Plan & Elevation
- Deck Beam Details
- Deck Rail Details

STANDARDS

- 630001-07 Steel Plate Beam Guardrail
- 630301-04 Shoulder Widening for Type 1 (Special) Guardrail Terminals
- 631032-03 Traffic Barrier Terminal, Type 6A
- 635001 Delineators
- 635006-02 Reflector and Terminal Marker Placement
- 635011-01 Reflector Marker and Mounting Details
- 701006-02 Off-Road Operations, 2L, 2W, 4.5 m (15') to 600 mm (24") From Pavement Edge
- 701201-02 Lane Closure, 2L, 2W, Day Only, for Speeds > 45 MPH
- 701316-03 Lane Closure, 2L, 2W, Bridge Repair, for Speeds > 45 MPH
- 701321-08 Lane Closure, 2L, 2W, Bridge Repair with Barrier
- 702001-06 Traffic Control Devices
- 704001-03 Temporary Concrete Barrier
- 720011 Metal Posts for Signs, Markers and Delineators
- 728001 Telescoping Steel Sign Support
- 729001 Applications of Types A and B Metal Posts (For Signs & Markers)



FULL SIZE PLANS HAVE BEEN PREPARED USING STANDARD ENGINEERING SCALES. REDUCED SIZED PLANS WILL NOT CONFORM TO STANDARD SCALES. IN MAKING MEASUREMENTS ON REDUCED PLANS, THE ABOVE SCALES MAY BE USED.

J.U.L.I.E.
JOINT UTILITY LOCATION INFORMATION FOR EXCAVATION
1-800-892-0123

BRIDGE MAINTENANCE ENGINEER: MAHMOUD ETEMADI (815) 284-5393

STATE OF ILLINOIS
DEPARTMENT OF TRANSPORTATION
DIVISION OF HIGHWAYS

SUBMITTED January 31st 20 07
Joseph L. Connor
DEPUTY DIRECTOR OF HIGHWAYS, REGION ENGINEER

March 23, 20 07
Eric E. Harwood
INTERN ENGINEER OF DESIGN AND ENVIRONMENT

March 23, 20 07
Milton R. Sewell, P.E.
DIRECTOR OF HIGHWAYS, CHIEF ENGINEER

**PRINTED BY THE AUTHORITY
OF THE STATE OF ILLINOIS**