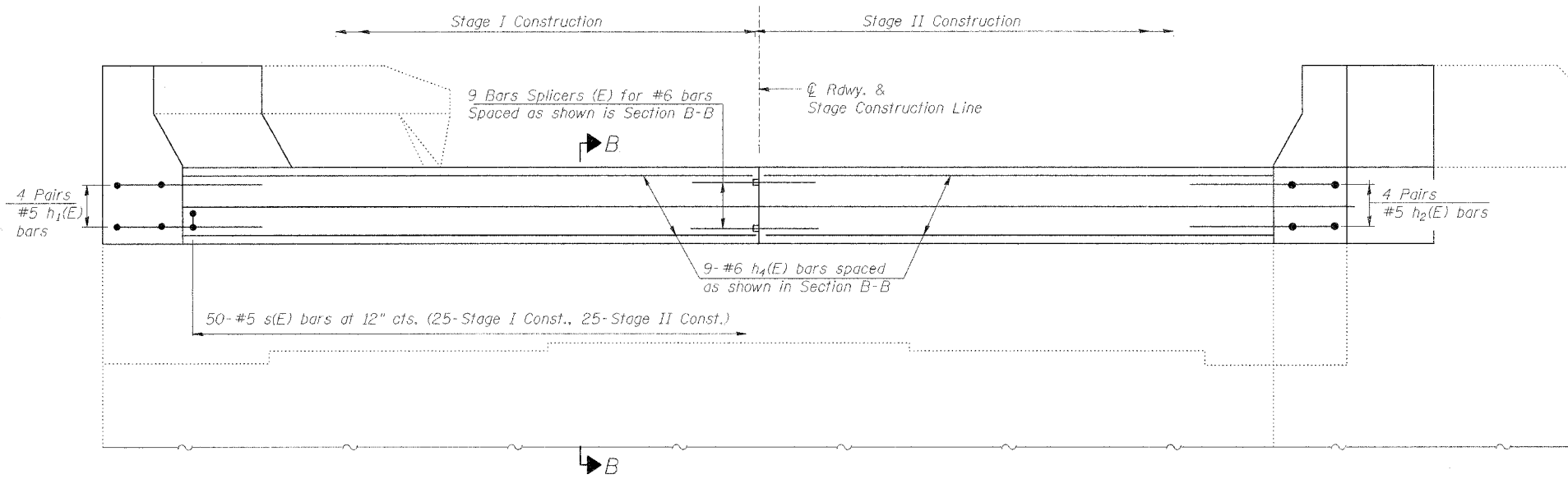


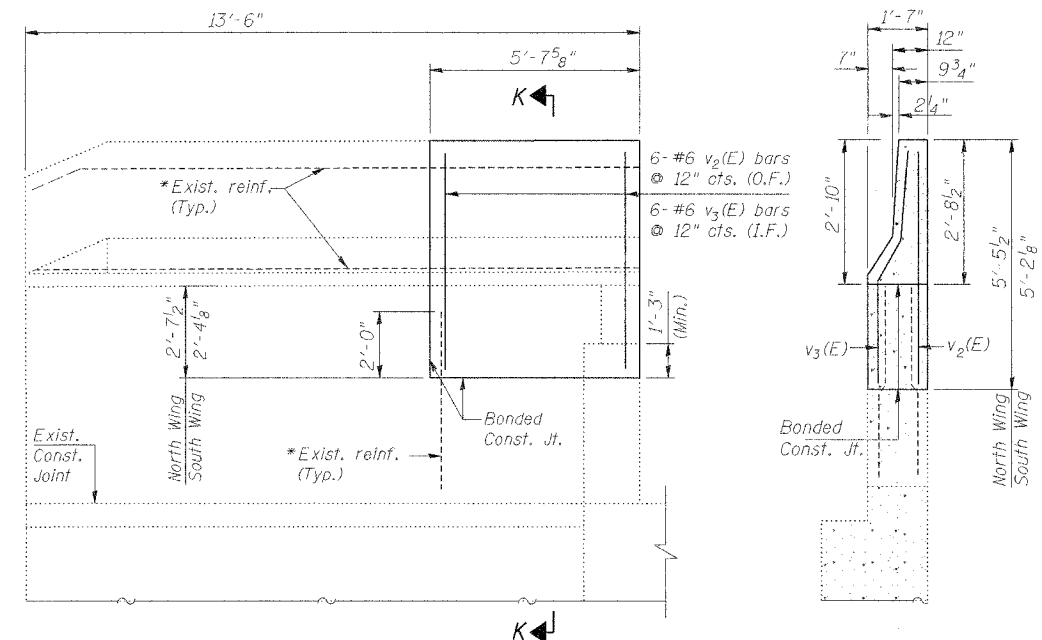
STATE OF ILLINOIS  
DEPARTMENT OF TRANSPORTATION

Abbreviations:  
I.F. - Inner Face  
O.F. - Outer Face

ROUTE NO.	SECTION	COUNTY	TOTAL SHEETS	SHEET NO.	SHEET NO. 7
U.S. 20	1177-2B1M	STEPHENSON COUNTY	11	9	8 SHEETS
FED. ROAD DIST. NO. 7 ILLINOIS FED. AID PROJECT-					
CONTRACT # 64001					



ELEVATION



INSIDE ELEVATION WING WALL

SECTION K-K

\* Existing reinforcement extending into the removal area shall be cleaned, straightened and incorporated into the new construction. Any reinforcement bars that are damaged during concrete removal shall be replaced with an approved bar splicer or anchorage system. Cost shall be included with concrete removal.

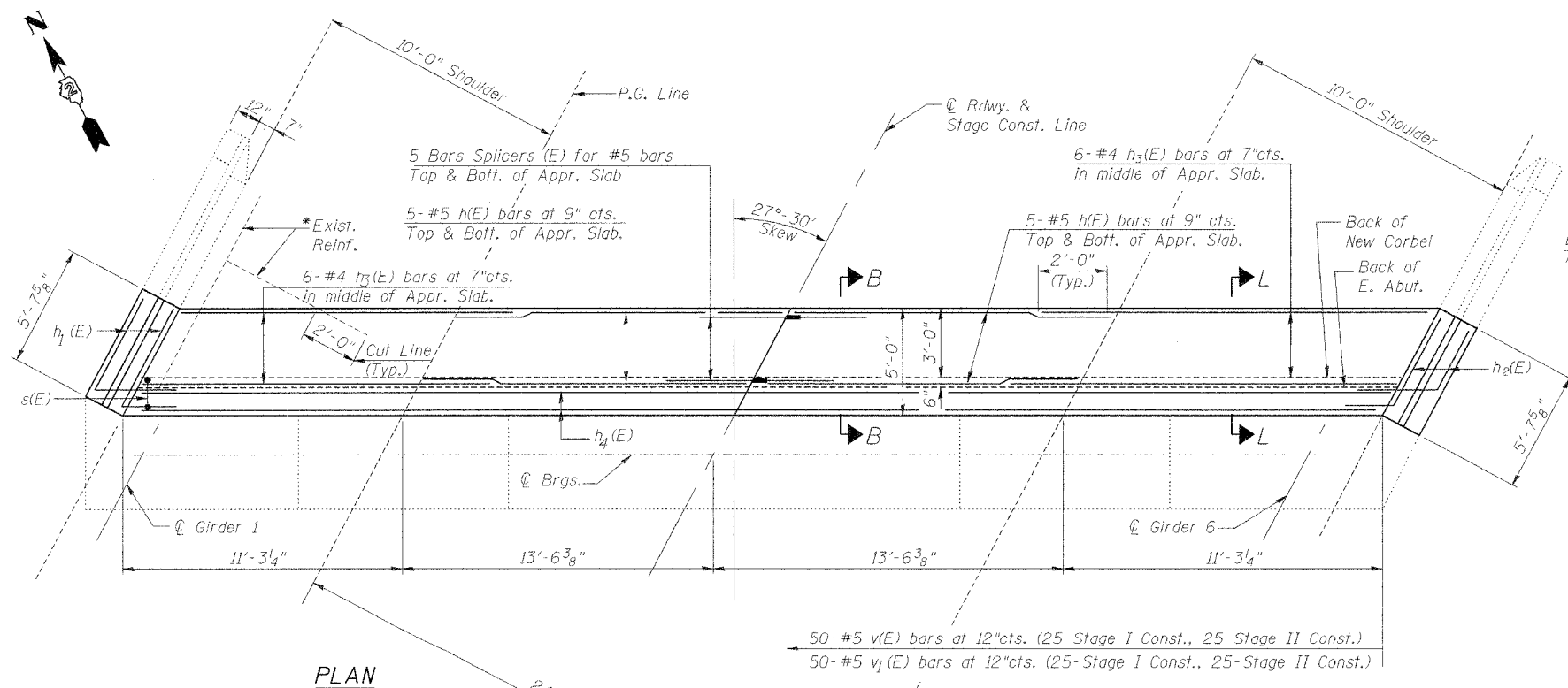
BILL OF MATERIAL

Bar	No.	Size	Length	Shape
h1(E)	20	#5	13'-4"	—
h1(E)	8	#5	9'-4"	↘
h2(E)	8	#5	7'-8"	↘
h3(E)	12	#4	13'-3"	—
h4(E)	18	#6	24'-9"	—
s(E)	50	#5	6'-2"	□
v(E)	50	#5	2'-5"	—
v1(E)	50	#5	2'-0"	—
v2(E)	12	#6	5'-2"	—
v3(E)	12	#6	5'-4"	—
Concrete Removal		Cu.Yd.	18.3	
Concrete Superstructure		Cu.Yd.	18.8	
Reinforcement Bars Epoxy Coated		Pound	1940	

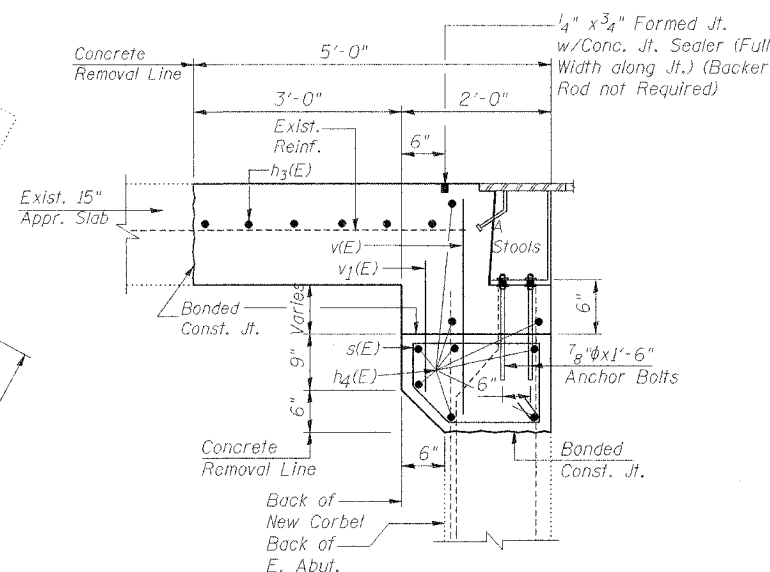
Reinforcement bars designated (E) shall be epoxy coated

For Bar Splicer Details, See Sheet 8 of 8

For Section B-B, See sheet 3 of 8

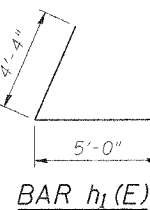


PLAN

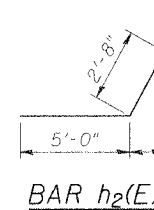


SECTION L-L

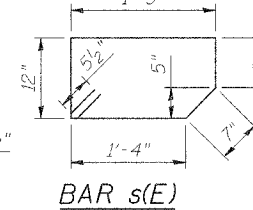
DESIGNED	M.R./R.A.
CHECKED	H.T.
DRAWN	J.S.P.
CHECKED	H.T./M.R.



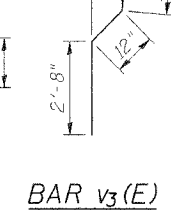
BAR h1(E)



BAR h2(E)



BAR s(E)



BAR v3(E)

CONCRETE PLACEMENT DETAILS

US 20 OVER PECATONICA RIVER  
FAP ROUTE 301 (US20), SECTION 1177-2B1M  
STEPHENSON COUNTY  
STATION 539+14.00  
STRUCTURE NO. 089-0045

SCALE: NONE DATE: JANUARY, 2007  
Soodan & Associates, Inc.  
100 North LaSalle Street, Suite 1800  
Chicago, Illinois 60602