

F.A.P. RTE.	SECTION	COUNTY	TOTAL SHEETS	SHEET NO.
*	**	KENDALL	12	6
STA.		TO STA.		
FED. ROAD DIST. NO.		ILLINOIS FED. AID PROJECT		

- FAP ROUTE 591 (US 34)
- SECTION (15R) TS-1 & I

### DETECTOR LOOP INDUCTANCE CHART

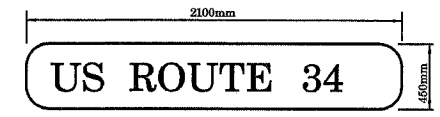
DETECTOR LOOP SYSTEM	Ø	LOCATION	TURNS PER LOOP	INDUCTANCE READING (MICROHENRIES)	FREQUENCY (HERTZ)	J PIN STATUS
A	4	SB STBR	4	299	35,287	ON
B	7	SB LT	4	301	35,158	ON
C	6	WB FAR	5	442	29,036	ON
D	6	WB STBR	4	556	25,892	OFF
E	1	WB LT	4	816	21,362	ON
F	8	NB STBR	4	264	37,597	ON
G	3	NB LT	4	266	37,441	ON
H	2	EB FAR	5	430	29,419	ON
I	2	EB STBR	4	541	26,242	OFF
J	5	EB LT	4	807	21,484	ON

J PIN STATUS: "ON" MEANS STANDARD DETECTOR SETUP. "OFF" MEANS J WIRE HAS BEEN DISCONNECTED, BUT INTACT, AT THE HARNESS PANEL WITH THE NECESSARY SPADE CONNECTION ATTACHED, MARKED, AND INSULATED.

### ELECTRICAL LOAD FOR INTERSECTION

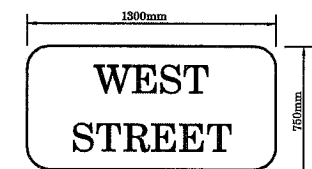
STREET NAME	COMPONENT	NUMBER	WATTAGE EACH	BURNTIME %
US ROUTE 34	RED	8	10	54
	YELLOW	8	19	4
	GREEN	8	14	42
	YELLOW ARROW LT.	4	9	5
	GREEN ARROW LT.	4	3.4	21
	↓	4	7	42
	↑	4	5	58
WEST STREET	RED	6	10	70
	YELLOW	6	19	4
	GREEN	6	14	26
	YELLOW ARROW LT.	4	9	4
	GREEN ARROW LT.	4	3.4	16
TRAFFIC SIGNAL CABINET	CONTROLLER	1	6	100
	VEHICLE DETECTORS	11	4	100
	UPS	1	50	100
HIGHWAY LIGHTING	LUMINAIRE HPS	2	250	50

AGENCY RESPONSIBLE FOR ENERGY CHARGES: UNITED CITY OF PLANO  
 (NOTE: SEPERATE ENERGY BILLS FOR HIGHWAY LIGHTING AND TRAFFIC SIGNALS SHALL BE SUBMITTED TO THE UNITED CITY OF PLANO.)  
 7 NORTH JAMES STREET  
 PLANO, ILLINOIS 60545  
 708-552-8275



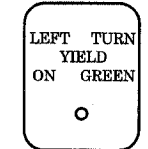
TYPE A SHEETING REQUIRED  
 200mm D SERIES LETTERS  
 2 SIGNS REQUIRED = 0.945 SQ. M. EACH  
 = 1.89 SQ. M. TOTAL

THIS STREET NAME SIGN SHALL BE PLACED ON THE MAST ARMS PARALLEL WITH US RTE 34



TYPE A SHEETING REQUIRED  
 200mm D SERIES LETTERS  
 2 SIGNS REQUIRED = 0.975 SQ. M. EACH  
 = 1.95 SQ. M. TOTAL

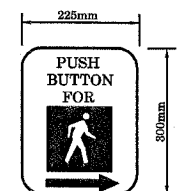
THIS STREET NAME SIGN SHALL BE PLACED ON THE MAST ARMS PARALLEL WITH WEST STREET



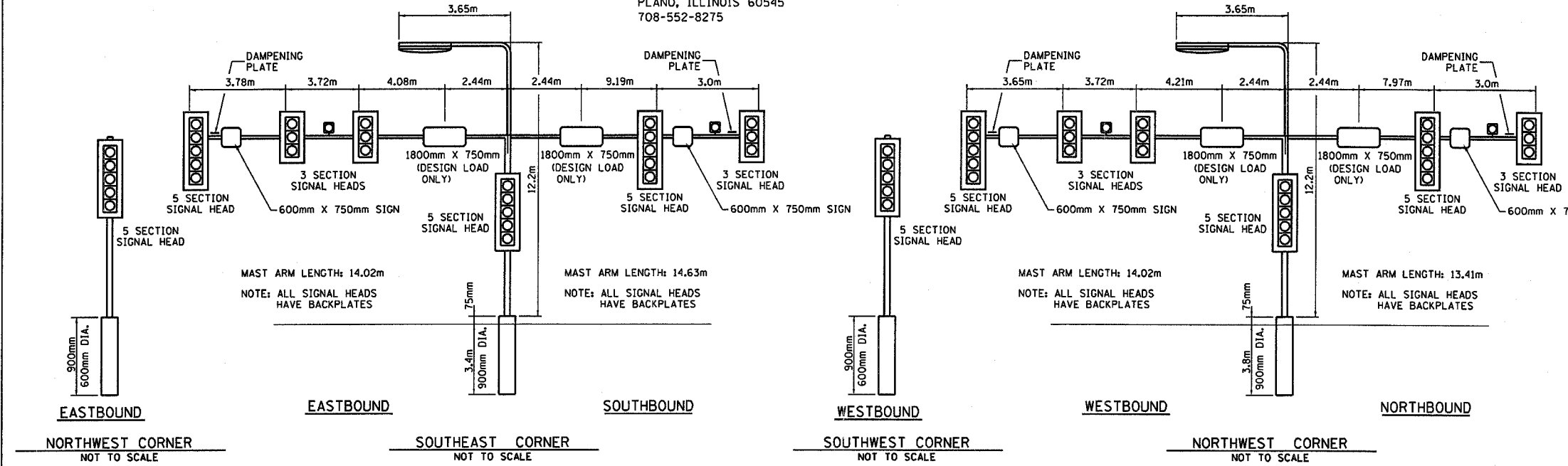
R10 - 12  
 600mm X 750mm

TYPE A SHEETING REQUIRED  
 4 SIGNS REQUIRED = 0.45 SQ. M. EACH  
 = 1.8 SQ. M. TOTAL

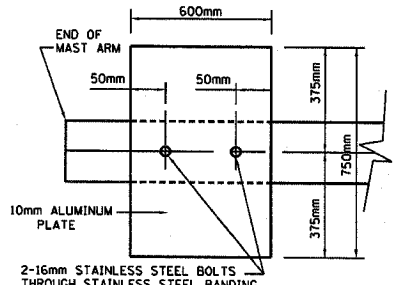
THIS SIGN SHALL BE LOCATED 150mm TO 300mm TO THE RIGHT OF EACH 5 SECTION MAST ARM MOUNTED LEFT TURN SIGNAL AND DIRECTLY BELOW AND PARALLEL TO THE BACKPLATE OF EACH POST BRACKETED 5 SECTION LEFT TURN SIGNAL FOR THE NORTHBOUND AND SOUTHBOUND APPROACHES.



THE CONTRACTOR SHALL SUPPLY AND MOUNT ONE SIGN WITH EACH PEDESTRIAN PUSH-BUTTON AND THIS SHALL BE INCLUDED IN THE COST OF PEDESTRIAN PUSH-BUTTON PAY ITEM.



NOTE:  
 DAMPENING DEVICE SHALL CONSIST OF A 600mm X 750mm TYPE 1, UNPAINTED ALUMINUM SIGN STOCK MOUNTED HORIZONTALLY ON TOP OF MAST ARM WITH THE 750mm LENGTH PERPENDICULAR TO THE ARM. COST OF THE DAMPENING DEVICE IS INCLUDED IN THE MAST ARM PAY ITEM.



NOTE:  
 MOUNT DAMPENING PLATE TO END OF EACH TRAFFIC SIGNAL MAST ARM.

DAMPENING PLATE DETAIL - TOP VIEW

REVISIONS	
ARR	1/07

ILLINOIS DEPARTMENT OF TRANSPORTATION  
 TRAFFIC SIGNAL DETAILS  
 FAP 591 (US 34) AND WEST STREET  
 SECTION (15R) TS-1 & I  
 KENDALL COUNTY  
 DRAWN BY ARR  
 CHECKED BY JLS  
 DATE 11/06