

F.A.I. RTE.	SECTION	COUNTY	TOTAL SHEETS	SHEET NO.
57	(38-3,38-5)L	IROQUOIS	16	1

STATE OF ILLINOIS
DEPARTMENT OF TRANSPORTATION
DIVISION OF HIGHWAYS

**PROPOSED
HIGHWAY PLANS**

F.A.I. ROUTE 57 (I-57)
SECTION (38-3,38-5)L
PROJECT HSIP- 057-6 (184) 294
IROQUOIS COUNTY
C-93-116-06

INDEX OF SHEETS

SHEET NO.	DESCRIPTION
1.	COVER SHEET
2.	GENERAL NOTES & SUMMARY OF QUANTITIES
3.	SCHEDULE OF QUANTITIES
4.-5.	HORIZONTAL CONTROL
6.	SURVEY TIES
7.-8.	DEMOLITION PLANS
9.-10.	LIGHTING PLANS
11.	CIRCUIT DIAGRAM
12.	LUMINAIRE PERFORMANCE TABLES
13.	CONTROLLER DETAILS
14.-16.	LIGHTING STANDARDS

HIGHWAY STANDARDS

000001-04	STANDARDS, SYMBOLS, ABBREVIATIONS, AND PATTERNS
701001-01	OFF-ROAD OPERATIONS, 2L, 2W, > 4.5m (15') FROM EDGE OF PAVEMENT
701006-02	OFF-ROAD OPERATIONS, 2L, 2W, 4.5m (15') TO 600mm (24") FROM EDGE OF PAVEMENT
701101-01	OFF-ROAD OPERATIONS, MULTI-LANE, < 4.5m (15') FROM EDGE OF PAVEMENT
701106-01	OFF-ROAD OPERATIONS, MULTI-LANE, > 4.5m (15') FROM EDGE OF PAVEMENT
701201-02	LANE CLOSURE, 2L, 2W, DAY ONLY
701301-02	LANE CLOSURE, 2L, 2W, SHORT TIME OPERATIONS
702001-06	TRAFFIC CONTROL DEVICES

D93-057-06



LOCATION OF SECTION INDICATED THUS: -

HIGHWAY CLASSIFICATIONS

FAI 57-INTERSTATE
2005 ADT=17,000 SOUTH OF U.S. 24
2005 ADT=15,500 NORTH OF U.S.24/SOUTH OF IL 116
2005 ADT=16,100 NORTH OF IL 116

U.S. 24-PRINCIPAL ARTERIAL
2005 ADT=9,100 EAST OF I-57
2005 ADT=5,500 WEST OF I-57

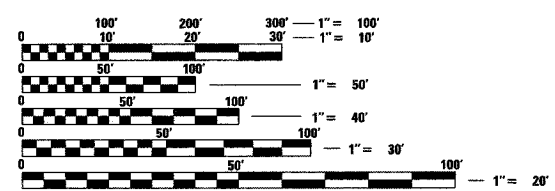
IL 116-PRINCIPAL ARTERIAL
2005 ADT=2,400 EAST OF I-57
2005 ADT=2,100 WEST OF I-57

Dirk A. Rannebarger
DIRK A. RANNEBARGER, P.E.
LEAD ELECTRICAL ENGINEER
REGISTERED PROFESSIONAL ENGINEER
ILLINOIS NO. 58019 EXPIRES NOVEMBER 30, 2007

12/13/06
DATE

Thomas L. Overmyer
THOMAS L. OVERMYER, P.E.
REGISTERED PROFESSIONAL ENGINEER
ILLINOIS NO. 49198 EXPIRES NOVEMBER 30, 2007

12/13/06
DATE



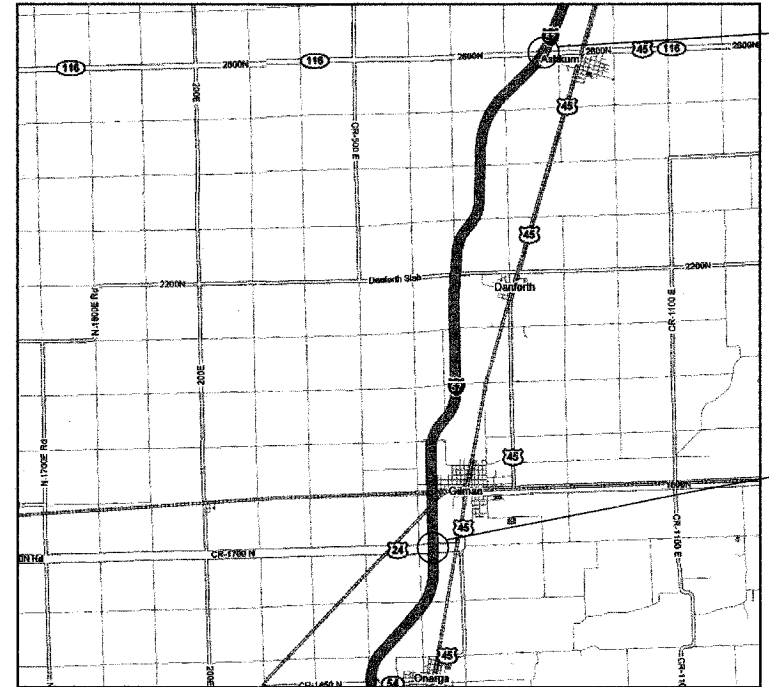
FULL SIZE PLANS HAVE BEEN PREPARED USING STANDARD ENGINEERING SCALES. REDUCED SIZED PLANS WILL NOT CONFORM TO STANDARD SCALES. IN MAKING MEASUREMENTS ON REDUCED PLANS, THE ABOVE SCALES MAY BE USED.

J.U.L.I.E.
JOINT UTILITY LOCATION INFORMATION FOR EXCAVATION
1-800-892-0123 (GILMAN T.26N; R.11E; SEC 6 & 7)
(ASHKUM T.28N; R14W; SEC. 20 & 29)

DISTRICT 3 NO.: (815) 434-6131
PROJECT ENGINEER: JOE KANNEL
UNIT CHIEF: MICHELE LINDEMANN

CONTRACT NO. 66685

INTERCHANGE LIGHTING AT U.S. 24 AND IL 116



LOCATION MAP
SPOT IMPROVEMENT

ASHKUM, IL
I-57 & IL 116
STA. 659+25.59 RTE 116
= STA. 129+68.38 I-57



GILMAN, IL
I-57 & U.S. RTE. 24
STA. 19+99.29 US RTE 24
= STA. 645+34.42 I-57

STATE OF ILLINOIS
DEPARTMENT OF TRANSPORTATION
DIVISION OF HIGHWAYS

SUBMITTED *December 26* 2006

Don O'Keefe
DEPUTY DIRECTOR OF HIGHWAYS, REGION 2 ENGINEER

February 2, 2006
Eric E. Rasmussen
ENGINEER OF DESIGN AND ENVIRONMENT

February 2, 2006
Milton R. Sosa, P.E.
DIRECTOR OF HIGHWAYS, CHIEF ENGINEER

**PRINTED BY THE AUTHORITY
OF THE STATE OF ILLINOIS**

Prepared By:
Foth & Van Dyke
DAILY DIVISION

1610 BROADMOOR DRIVE
CHAMPAIGN, ILLINOIS 61821
PHONE: (217) 352-4169 FAX: (217) 352-0085
IL DESIGN FIRM REG. NO. 184-003283