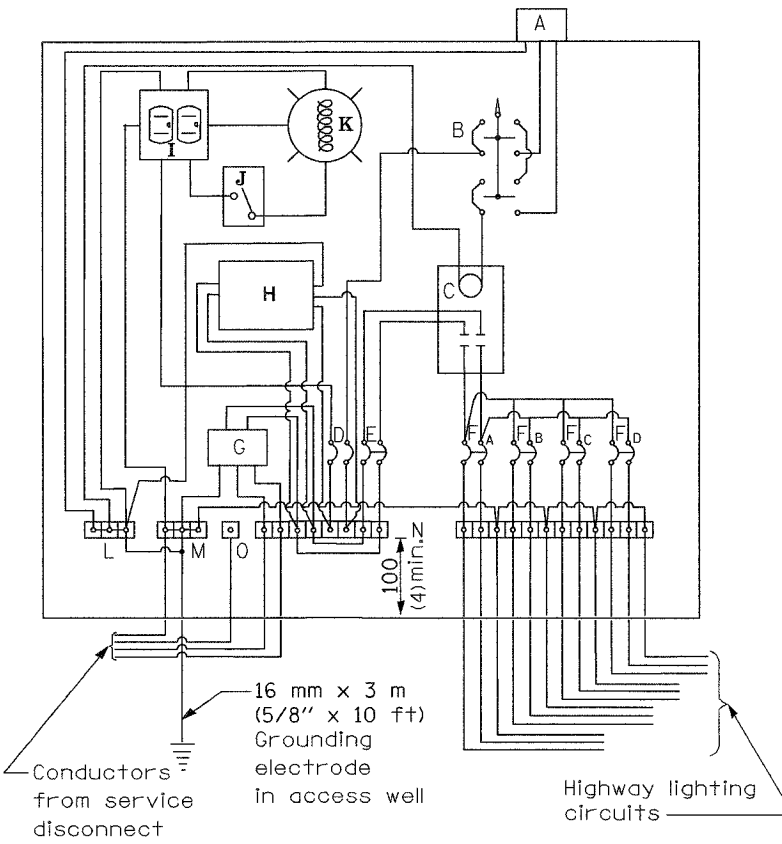
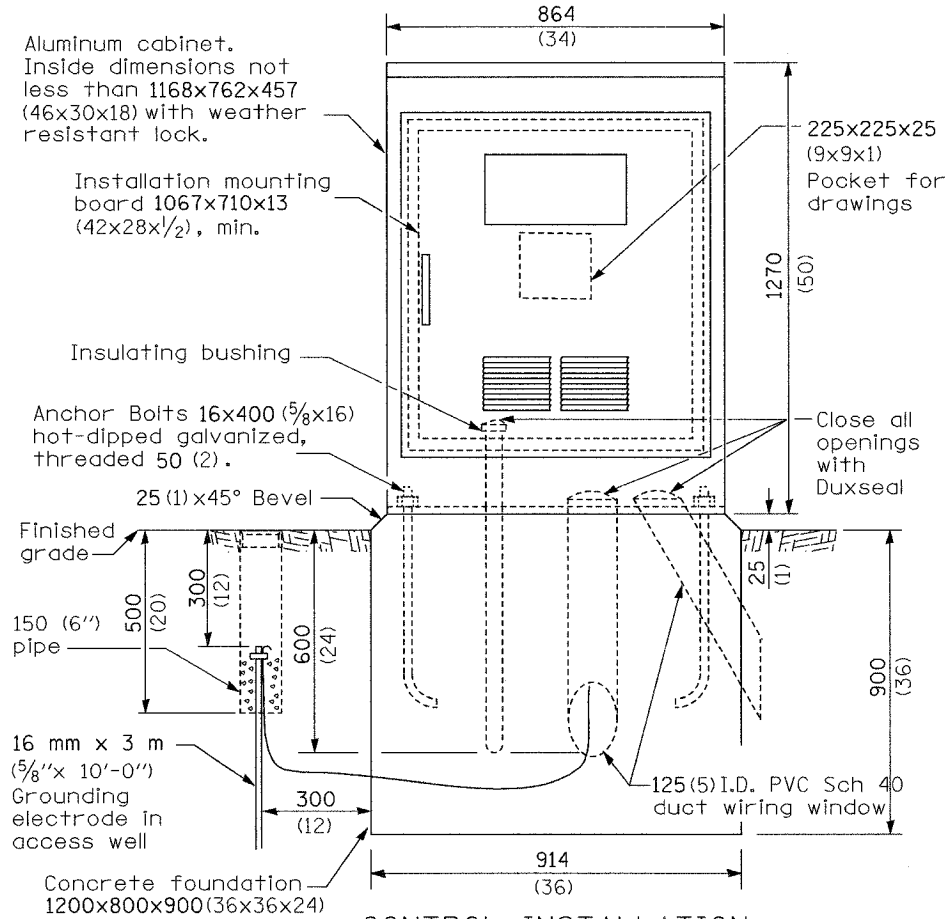
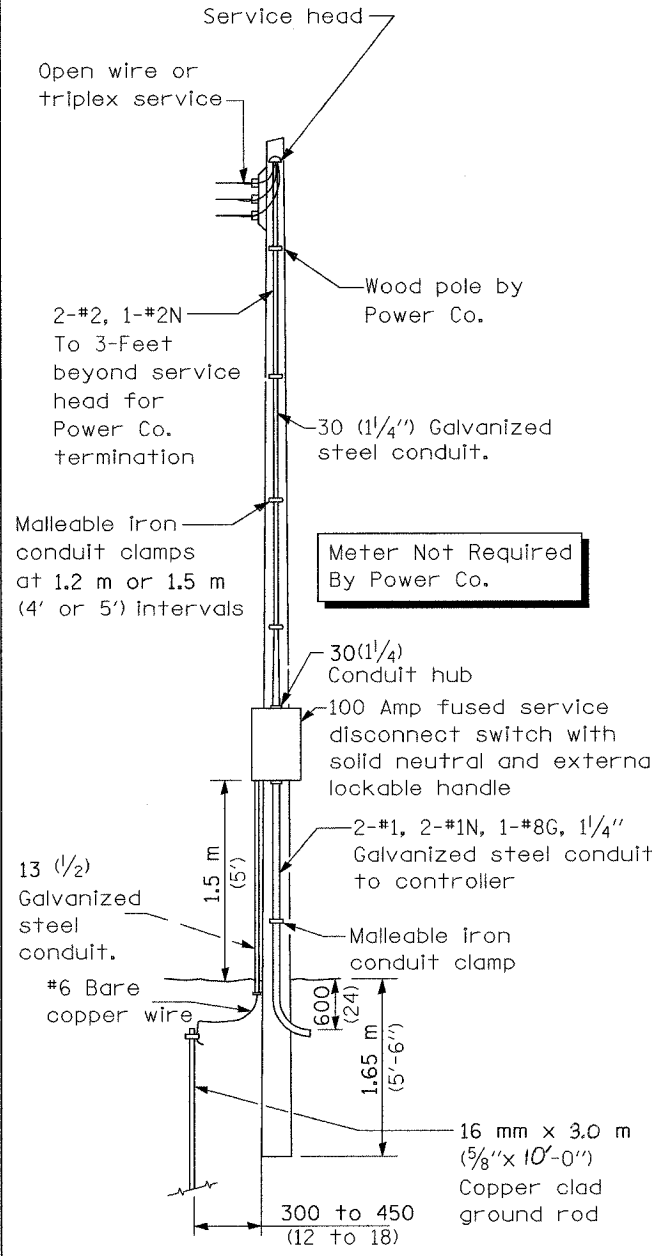


F.A.I. RTE.	SECTION	COUNTY	TOTAL SHEETS	SHEET NO.
57	(38-3,38-5)IL	JROQUOIS	16	13
STA.		TO STA.		
FED. ROAD DIST. NO.		ILLINOIS FED. AID PROJECT		



- ### MATERIALS
- A Photocell w/ integral surge arrester
  - B 3 position selector switch HAND-OFF-AUTO
  - C 100 amp electrically held contactor, 120V operating coil
  - D 15 amp 1 pole, circuit breaker
  - E 100 amp, 2 pole, main circuit breaker
  - F 20 amp, 2 pole, branch circuit breaker (typ). 2 spare c.b. required but not shown
  - G Surge arrester
  - H Transformer, 1 KVA\*, 240/480V primary, 120/240V sec, single phase with Primary and secondary fuses
  - I GFCI duplex receptacle
  - J Single pole, single throw switch
  - K Shielded security fixture with 100W lamp
  - L Neutral bar
  - M Equipment ground bar
  - N Terminal block (typ)
  - O Isolated (insulated from ground) neutral lug
- (\* = Size larger as needed)

### GENERAL NOTES

Locate service pole and control installation adjacent to R.O.W. line with a minimum distance of 9 m (30') from the edge of pavement. Locate in close proximity to the utility transformer so the service drop does not exceed 46 m (150ft) and the total distance of overhead and underground cable (utility transformer to lighting controller) does not exceed 76 m (250ft). Exact location shall be established by the Engineer.

Wiring shall be panel board fashion. All bends shall be right angles. All runs shall vertical or parallel to panel board. Wires shall be grouped or laced.

All control installation components shall be U.L. listed.

Raceways shall terminate 75 (3) above top of concrete foundation.

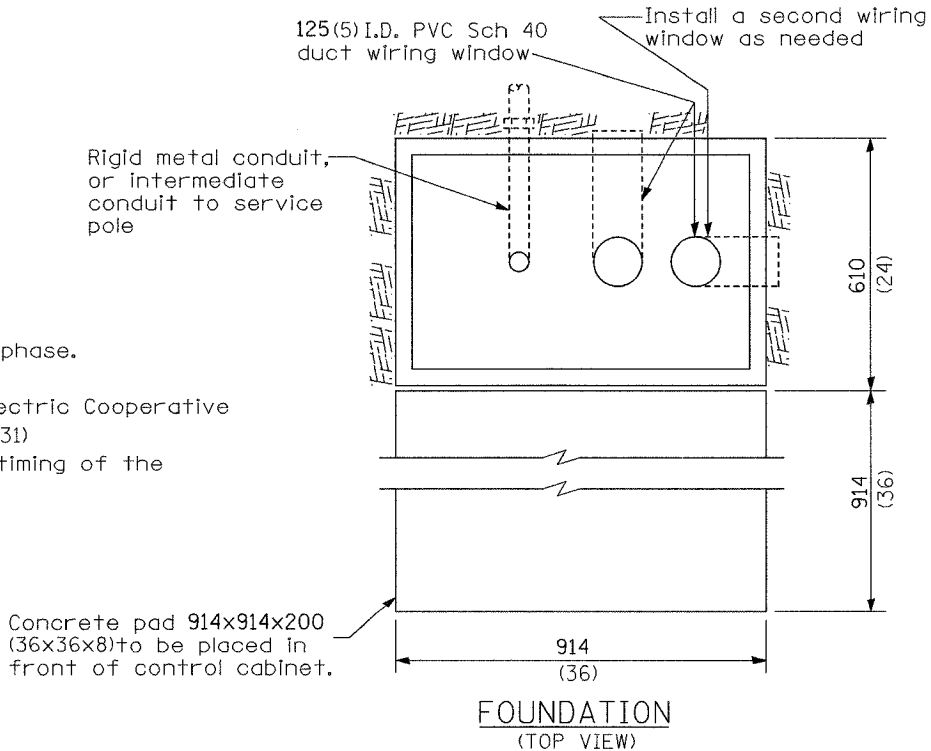
Label equipment ground buss and neutral buss.

All dimensions are in millimeters (Inches) unless otherwise shown.

480 V. SERVICE

- ### NOTES:
- The service shall be 100-amp, 480 volt, single phase.
  - The contractor shall contact Eastern Illini Electric Cooperative (Brad Weisenbarn or Mike Anderson, 217-379-2131) and coordinate both the work required and timing of the installation with the electric utility.

### SERVICE POLE



REVISIONS		
NAME	DATE	
REVISION 1	12/21/06	
REVISION 2	12/26/06	

ILLINOIS DEPARTMENT OF TRANSPORTATION  
FAT ROUTE 57

### CONTROLLER DETAILS

SCALE: VERT. NO SCALE  
HORIZ. DATE: 12/13/06  
DRAWN BY: JDK  
CHECKED BY: DAR

PLOT TIME = 22:06:44 PM  
 PLOT DATE = 12/21/06  
 FILE NAME = X:\CHIEF\2006\66685\Plan\1\13.dwg  
 PLOT SCALE = 80.21928 mm / IN.  
 USER NAME = JDT