

F.A.P. RTE.	SECTION	COUNTY	TOTAL SHEETS	SHEET NO.
316	(116) I	BUREAU	6	3
STA.		TO STA.		
FED. ROAD DIST. NO.		ILLINOIS	FED. AID PROJECT	

CONSTRUCTION NOTES

REPLACE SPAN WIRE MOUNTED SIGNAL HEADS ON RAMP "D" WITH NEW SIGNAL HEADS AND A STEEL MAST ARM ASSEMBLY AND POLE AT THE SOUTHWEST CORNER OF THE INTERSECTION.

PLACE ADDITIONAL TEMPORARY WOOD POLES BETWEEN THE EXISTING POLES SUPPORTING THE NORTHBOUND AND SOUTHBOUND SIGNALS AS SHOWN.

REPLACE ALL EXISTING SPAN AND TETHER WIRE. NOTE THAT NO NEW TETHER WIRES WILL BE REQUIRED WEST OF THE NEW WOOD POLES.

RELOCATE ALL REMAINING EXISTING SIGNAL HEADS AND REQUIRED SIGNAL CABLES TO NEW SPAN AND TETHER WIRES.

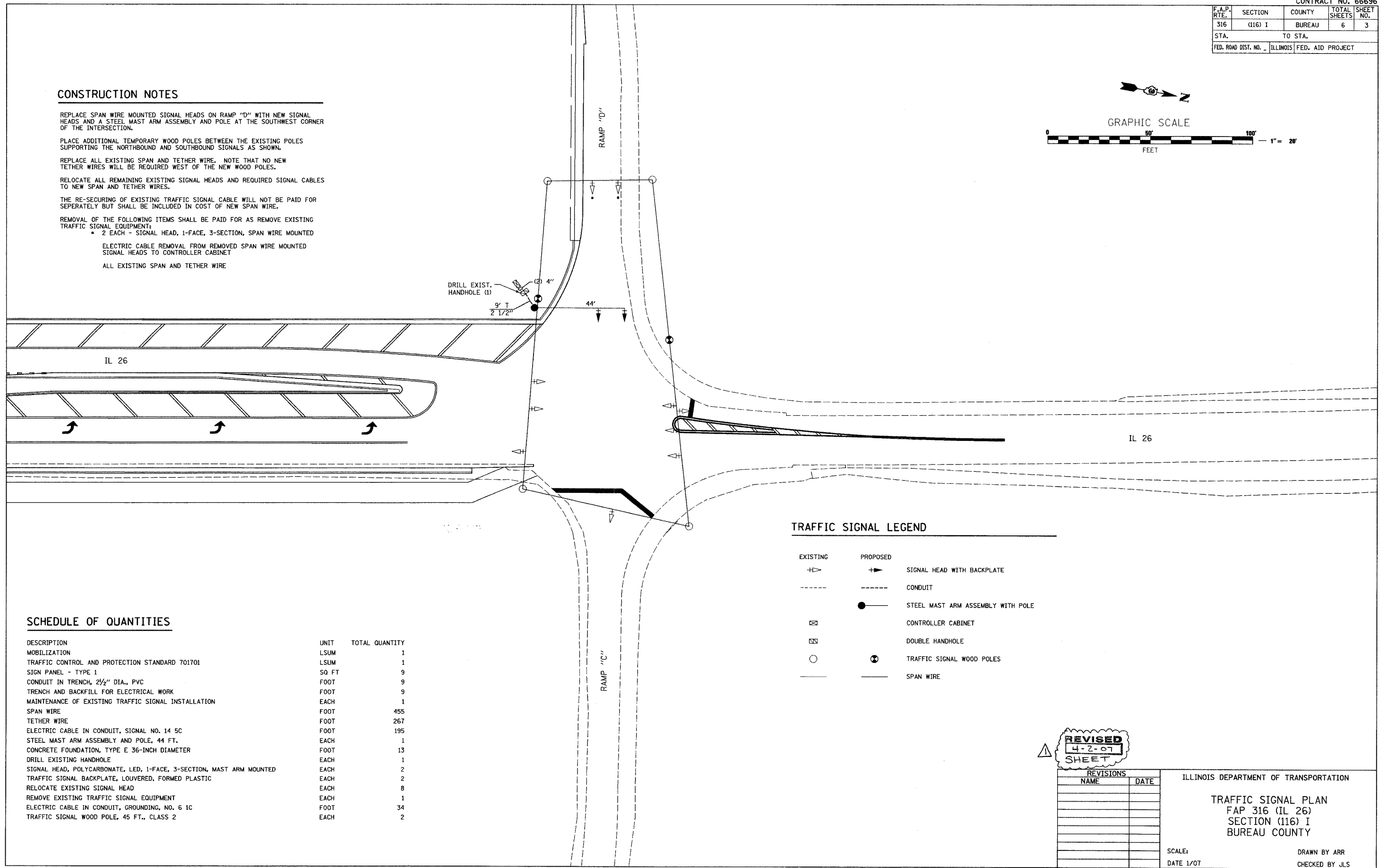
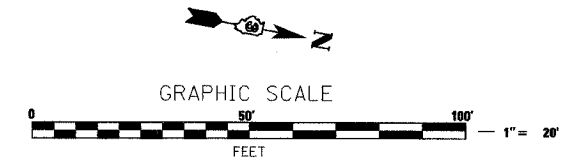
THE RE-SECURING OF EXISTING TRAFFIC SIGNAL CABLE WILL NOT BE PAID FOR SEPERATELY BUT SHALL BE INCLUDED IN COST OF NEW SPAN WIRE.

REMOVAL OF THE FOLLOWING ITEMS SHALL BE PAID FOR AS REMOVE EXISTING TRAFFIC SIGNAL EQUIPMENT:

- 2 EACH - SIGNAL HEAD, 1-FACE, 3-SECTION, SPAN WIRE MOUNTED

ELECTRIC CABLE REMOVAL FROM REMOVED SPAN WIRE MOUNTED SIGNAL HEADS TO CONTROLLER CABINET

ALL EXISTING SPAN AND TETHER WIRE



TRAFFIC SIGNAL LEGEND

EXISTING	PROPOSED	
→	→	SIGNAL HEAD WITH BACKPLATE
---	---	CONDUIT
⊠	●	STEEL MAST ARM ASSEMBLY WITH POLE
⊠	⊠	CONTROLLER CABINET
⊠	⊠	DOUBLE HANDHOLE
○	⊙	TRAFFIC SIGNAL WOOD POLES
---	---	SPAN WIRE

SCHEDULE OF QUANTITIES

DESCRIPTION	UNIT	TOTAL QUANTITY
MOBILIZATION	LSUM	1
TRAFFIC CONTROL AND PROTECTION STANDARD 701701	LSUM	1
SIGN PANEL - TYPE 1	SQ FT	9
CONDUIT IN TRENCH, 2 1/2" DIA., PVC	FOOT	9
TRENCH AND BACKFILL FOR ELECTRICAL WORK	FOOT	9
MAINTENANCE OF EXISTING TRAFFIC SIGNAL INSTALLATION	EACH	1
SPAN WIRE	FOOT	455
TETHER WIRE	FOOT	267
ELECTRIC CABLE IN CONDUIT, SIGNAL NO. 14 5C	FOOT	195
STEEL MAST ARM ASSEMBLY AND POLE, 44 FT.	EACH	1
CONCRETE FOUNDATION, TYPE E 36-INCH DIAMETER	FOOT	13
DRILL EXISTING HANDHOLE	EACH	1
SIGNAL HEAD, POLYCARBONATE, LED, 1-FACE, 3-SECTION, MAST ARM MOUNTED	EACH	2
TRAFFIC SIGNAL BACKPLATE, LOUVERED, FORMED PLASTIC	EACH	2
RELOCATE EXISTING SIGNAL HEAD	EACH	8
REMOVE EXISTING TRAFFIC SIGNAL EQUIPMENT	EACH	1
ELECTRIC CABLE IN CONDUIT, GROUNDING, NO. 6 1C	FOOT	34
TRAFFIC SIGNAL WOOD POLE, 45 FT., CLASS 2	EACH	2

REVISED
4-2-07
SHEET

REVISIONS	
NAME	DATE

ILLINOIS DEPARTMENT OF TRANSPORTATION

TRAFFIC SIGNAL PLAN
FAP 316 (IL 26)
SECTION (116) I
BUREAU COUNTY

SCALE: DATE 1/07
DRAWN BY ARR
CHECKED BY JLS

PLOT DATE = 3/07
FILE NAME = TSP.LANDON
USER NAME = ARR