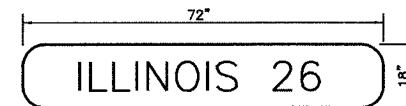


F.A.P. RTE.	SECTION	COUNTY	TOTAL SHEETS	SHEET NO.
316	(116) I	BUREAU	6	5
STA.		TO STA.		
FED. ROAD DIST. NO.		ILLINOIS FED. AID PROJECT		

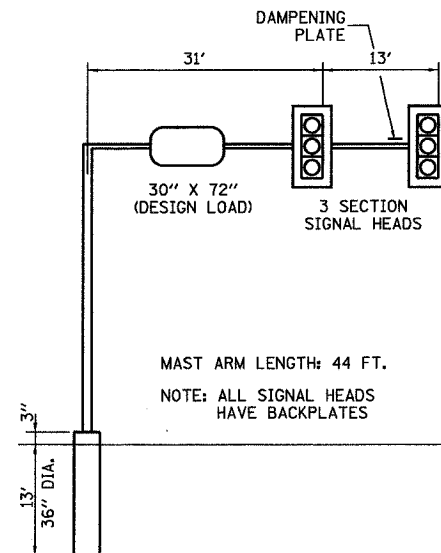
ELECTRICAL LOAD FOR INTERSECTION				
STREET NAME	COMPONENT	NUMBER	WATTAGE EACH	BURNTIME %
RAMPS "C" & "D"	RED (LED)	2	10	70
	YELLOW (LED)	2	19	5
	GREEN (LED)	2	14	25
	RED	1	135	70
	YELLOW	1	135	5
	GREEN	1	135	25
IL 26	RED	7	135	25
	YELLOW	7	135	5
	GREEN	7	135	70
	YELLOW ARROW LT.	2	135	5
	GREEN ARROW LT.	2	135	5
		2	90	70
		2	90	30
TRAFFIC SIGNAL CABINET	CONTROLLER	1	6	100
	VEHICLE DETECTORS	4	4	100

AGENCY RESPONSIBLE FOR TRAFFIC SIGNAL ENERGY CHARGES:  
CITY OF PRINCETON



TYPE A SHEETING REQUIRED  
8" D SERIES LETTERS  
1 SIGN REQUIRED = 9.00 SQ. FT. EACH  
= 9.00 SQ. FT. TOTAL

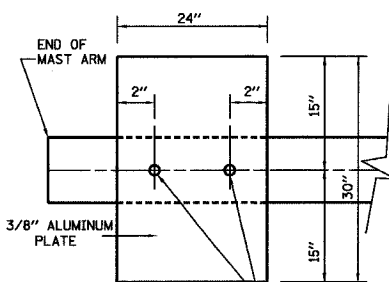
THIS STREET NAME SIGN SHALL BE PLACED ON THE  
MAST ARMS PARALLEL WITH ILLINOIS ROUTE 26



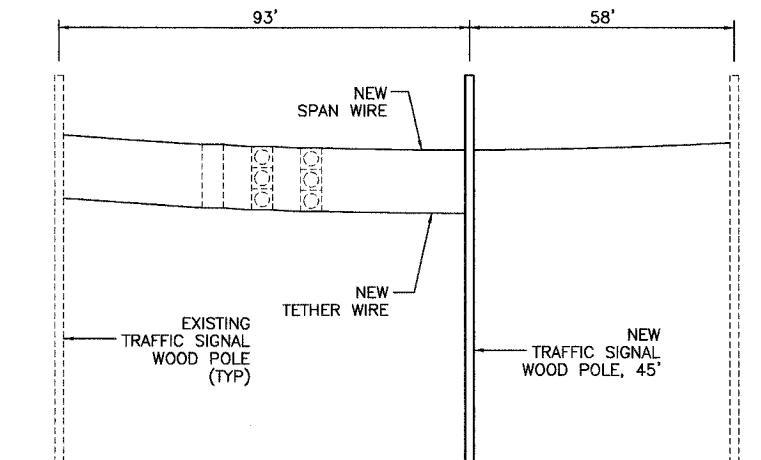
WESTBOUND OVER RAMP "D"  
SOUTHWEST CORNER  
NOT TO SCALE

NOTE:

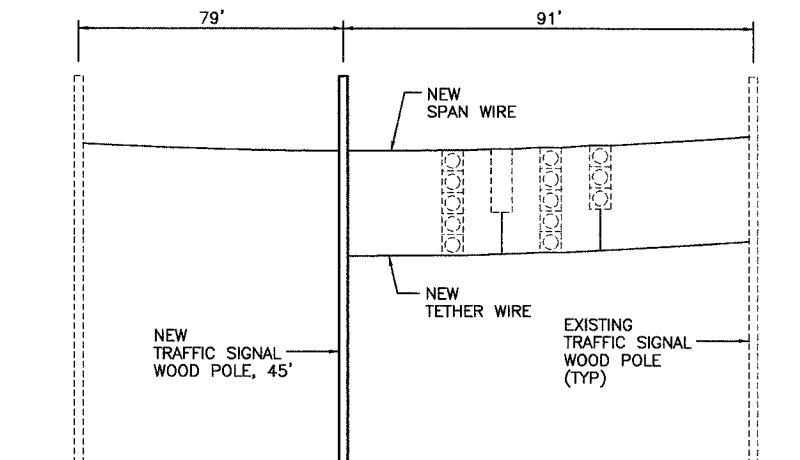
DAMPENING DEVICE SHALL CONSIST OF A 24" X 30" TYPE 1, UNPAINTED ALUMINUM SIGN STOCK MOUNTED HORIZONTALLY ON TOP OF MAST ARM WITH THE 30" LENGTH PERPENDICULAR TO THE ARM. COST OF THE DAMPENING DEVICE IS INCLUDED IN THE MAST ARM PAY ITEM.



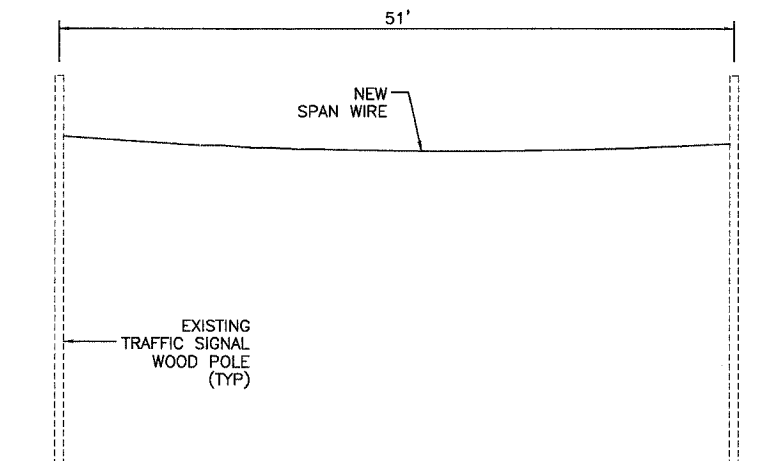
2-5/8" STAINLESS STEEL BOLTS THROUGH STAINLESS STEEL BANDING  
NOTE: MOUNT DAMPENING PLATE TO END OF EACH TRAFFIC SIGNAL MAST ARM.  
DAMPENING PLATE DETAIL - TOP VIEW



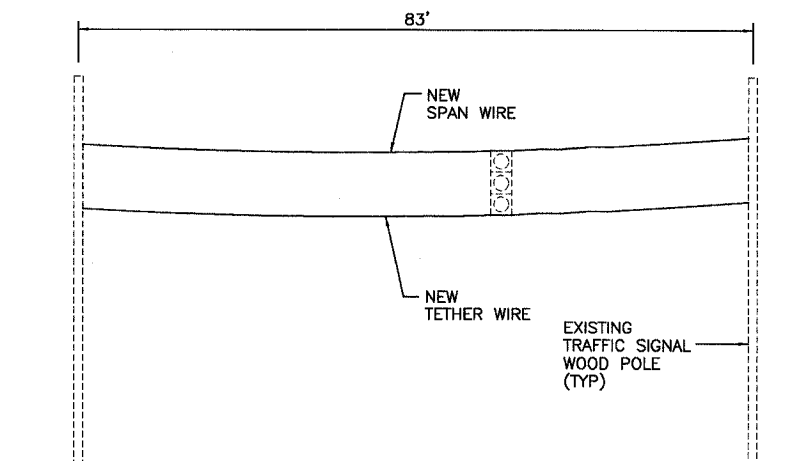
SOUTHBOUND  
NOT TO SCALE



NORTHBOUND  
NOT TO SCALE



WESTBOUND OVER RAMP "D"  
NOT TO SCALE



WESTBOUND OVER RAMP "C"  
NOT TO SCALE

**REVISED**  
4-2-07  
SHEET

REVISIONS	
NAME	DATE

ILLINOIS DEPARTMENT OF TRANSPORTATION

TRAFFIC SIGNAL DETAILS  
FAP 316 (IL 26)  
SECTION (116) I  
BUREAU COUNTY

SCALE:  
DATE 1/07

DRAWN BY ARR  
CHECKED BY JLS