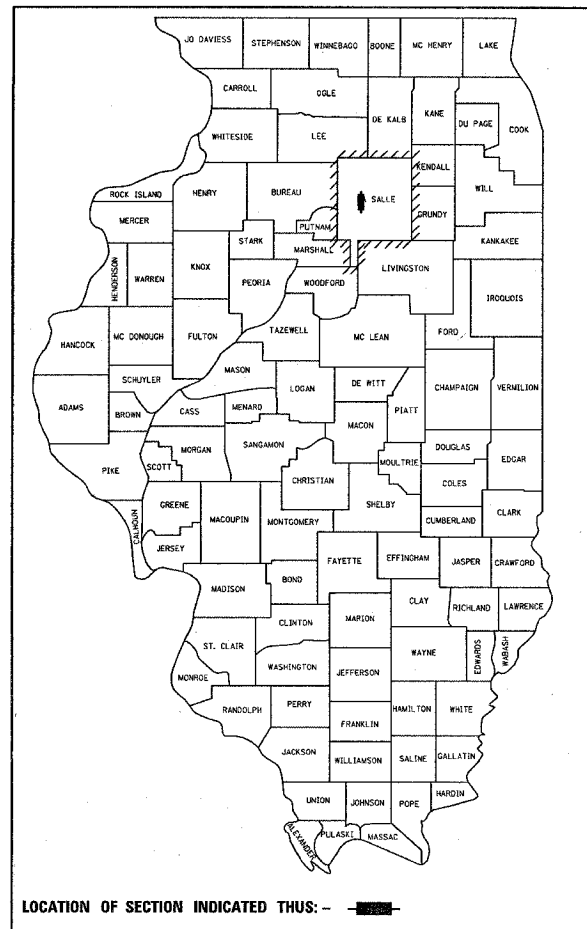


F.A.S. RTE.	SECTION	COUNTY	TOTAL SHEETS	SHEET NO.
1279	(6)DM-1	LASALLE	3	1

D-P3-20-07



**FUNCTION CLASSIFICATION**  
**MAJOR COLLECTOR - RURAL**  
 2005 ADT = 4250  
 P.V. = 83.5% S.U. = 10.3% M.U. = 6.2%

STATE OF ILLINOIS  
 DEPARTMENT OF TRANSPORTATION  
 DIVISION OF HIGHWAYS

SUBMITTED February 2, 20 07  
*Dee O'Keefe*  
 DEPUTY DIRECTOR OF HIGHWAYS, REGION ENGINEER

March 23, 20 07  
*Eric E. Harsh*  
 ENGINEER OF DESIGN AND ENVIRONMENT

March 23, 20 07  
*Milton R. Suel*  
 DIRECTOR OF HIGHWAYS, CHIEF ENGINEER

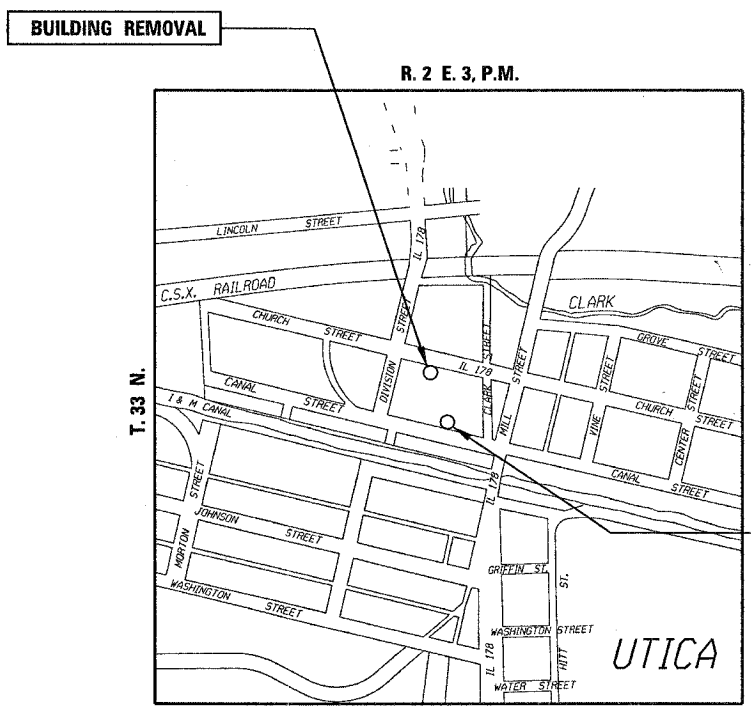
PRINTED BY THE AUTHORITY OF THE STATE OF ILLINOIS

STATE OF ILLINOIS  
 DEPARTMENT OF TRANSPORTATION  
 DIVISION OF HIGHWAYS

# PROPOSED HIGHWAY PLANS

FAS ROUTE 1279 (IL 178)  
 SECTION (6)DM-1  
 PROJECT HD-1279(106)  
 LASALLE COUNTY

C - 93 - 031 - 07  
REMOVAL OF TWO RESIDENTIAL BUILDINGS



LOCATION MAP  
NOT TO SCALE

**NO REVIEW**

**INDEX OF SHEETS**

- 1 COVERSHEET
- 2 GENERAL NOTES, SCHEDULE & SUMMARY OF QUANTITIES
- 3 PLAN VIEW

**HIGHWAY STANDARDS**

- 000001-04 STANDARD SYMBOLS, ABBREVIATIONS AND PATTERNS
- 701001-01 OFF-ROAD OPERATIONS 2L, 2W, MORE THAN 4.5 m (15') AWAY
- 701006-02 OFF-ROAD OPERATIONS 2L, 2W, 4.5 m (15') TO 600 mm (24") FROM PAVEMENT EDGE
- 701301-02 LANE CLOSURE, 2L, 2W, SHORT TIME OPERATIONS
- 702001-06 TRAFFIC CONTROL DEVICES

MICROFILMED \_\_\_\_\_  
 REEL NUMBER \_\_\_\_\_  
 AWARDED \_\_\_\_\_  
 RESIDENT ENGINEER \_\_\_\_\_  
 AS BUILT CHANGES WERE MADE  
 ON THE FOLLOWING SHEETS \_\_\_\_\_

JULIE 1-800-892-0123

DISTRICT 3 NO. (815) 434-6131

PROJECT ENGINEER: DAVE BROVIAK  
 UNIT CHIEF: BRAD DUNCAN  
 TOWNSHIP: UTICA

CONTRACT NO. 66701

DATE-TIME: c:\pro\ecfs\ed02007\coversht.dgn

F.A.S. RTE.	SECTION	COUNTY	TOTAL SHEETS	SHEET NO.
1279	(6)DM-1	LASALLE	3	2
STA.		TO STA.		
FED. ROAD DIST. NO.		ILLINOIS	FED. AID PROJECT	

GENERAL NOTES

SEEDING SHALL NOT BE PERMITTED AT ANY TIME WHEN THE GROUND IS FROZEN, WET, OR IN AN UNTILLABLE CONDITION. LOCATIONS TO BE SEEDED WILL BE DETERMINED BY THE ENGINEER.

ONLY THOSE TREES DESIGNATED BY THE ENGINEER OR LISTED IN THE TREE REMOVAL SCHEDULE SHALL BE REMOVED. THE CONTRACTOR SHALL PROTECT ALL REMAINING TREES FROM DAMAGE DUE TO HIS OPERATIONS.

ANY REFERENCE TO A STANDARD IN THESE PLANS SHALL BE INTERPRETED TO MEAN THE EDITION AS INDICATED BY THE SUBNUMBER SHOWN IN THE LIST OF STANDARDS INCLUDED IN THESE PLANS.

THE CONTRACTOR SHALL CONTACT JULIE PRIOR TO ANY REMOVAL OR EXCAVATION.

THE PARCEL FOR BUILDING NO. 2 (3TJ0017) HAS BEEN IDENTIFIED AS A SITE CONTAINING CONTAMINATED SOIL. NO EARTH/EMBANKMENT MATERIAL MAY BE REMOVED OFFSITE. THE EARTH SOIL MAY BE MOVED AS LONG AS IT STAYS ON SITE. IF CONSTRUCTION OPERATIONS REQUIRE THAT EARTH MATERIAL TO BE REMOVED OFFSITE THE DISTRICT 3 ENVIRONMENTAL UNIT SHALL BE CONTACTED AT 815-434-8569 PRIOR TO ANY EARTH REMOVAL OPERATIONS. ANY EARTH REMOVAL OPERATIONS AT THIS SITE WILL ALSO REQUIRE OBTAINING AN ENVIRONMENTAL FIRM TO MONITOR THE OFFSITE REMOVAL AT THE EXPENSE OF THE CONTRACTOR.

CODE NO.	ITEM	UNIT	100% FEDERAL
			CONSTRUCTION CODE TYPE: Y004
			TOTAL QUANTITY
20100210	TREE REMOVAL (OVER 15 UNITS DIAMETER)	UNIT	60
21101615	TOPSOIL FURNISH AND PLACE, 4"	SQ YD	694
* 25000200	SEEDING, CLASS 2	ACRE	0.14
* 25000400	NITROGEN FERTILIZER NUTRIENT	POUND	13
* 25000500	PHOSPHORUS FERTILIZER NUTRIENT	POUND	13
* 25000600	POTASSIUM FERTILIZER NUTRIENT	POUND	13
* 25100115	MULCH METHOD 2	ACRE	0.14
50105200	REMOVE EXISTING CULVERTS	EACH	1
67100100	MOBILIZATION	L SUM	1
Z0007601	BUILDING REMOVAL NO. 1	L SUM	1
Z0007602	BUILDING REMOVAL NO. 2	L SUM	1
* Z0049802	REMOVAL AND DISPOSAL OF FRIABLE ASBESTOS, BUILDING NO. 2	L SUM	1
* Z0049901	REMOVAL AND DISPOSAL OF NON-FRIABLE ASBESTOS, BUILDING NO. 1	L SUM	1
* Z0049902	REMOVAL AND DISPOSAL OF NON-FRIABLE ASBESTOS, BUILDING NO. 2	L SUM	1

\*SPECIALTY ITEMS

BUILDING NUMBER (PARCEL #)	TOPSOIL FURNISH AND PLACE 4"	SEEDING CLASS 2	NITROGEN FERTILIZER NUTRIENT	PHOSPHORUS FERTILIZER NUTRIENT	POTASSIUM FERTILIZER NUTRIENT	MULCH METHOD 2
	SQ YD	ACRE	TON	TON	TON	ACRE
1 (3TJ0012)	427	0.09	8	8	8	0.09
2 (3TJ0017)	267	0.05	5	5	5	0.05
TOTALS	694	0.14	13	13	13	0.14

STATE OF ILLINOIS  
DEPARTMENT OF TRANSPORTATION  
DISTRICT THREE

PREPARED BY: Rid. Powell  
DISTRICT STUDIES & PLANS ENGINEER

DATE: 2-2-07

EXAMINED BY: [Signature]  
DISTRICT CONSTRUCTION ENGINEER

[Signature]  
DISTRICT MATERIALS ENGINEER

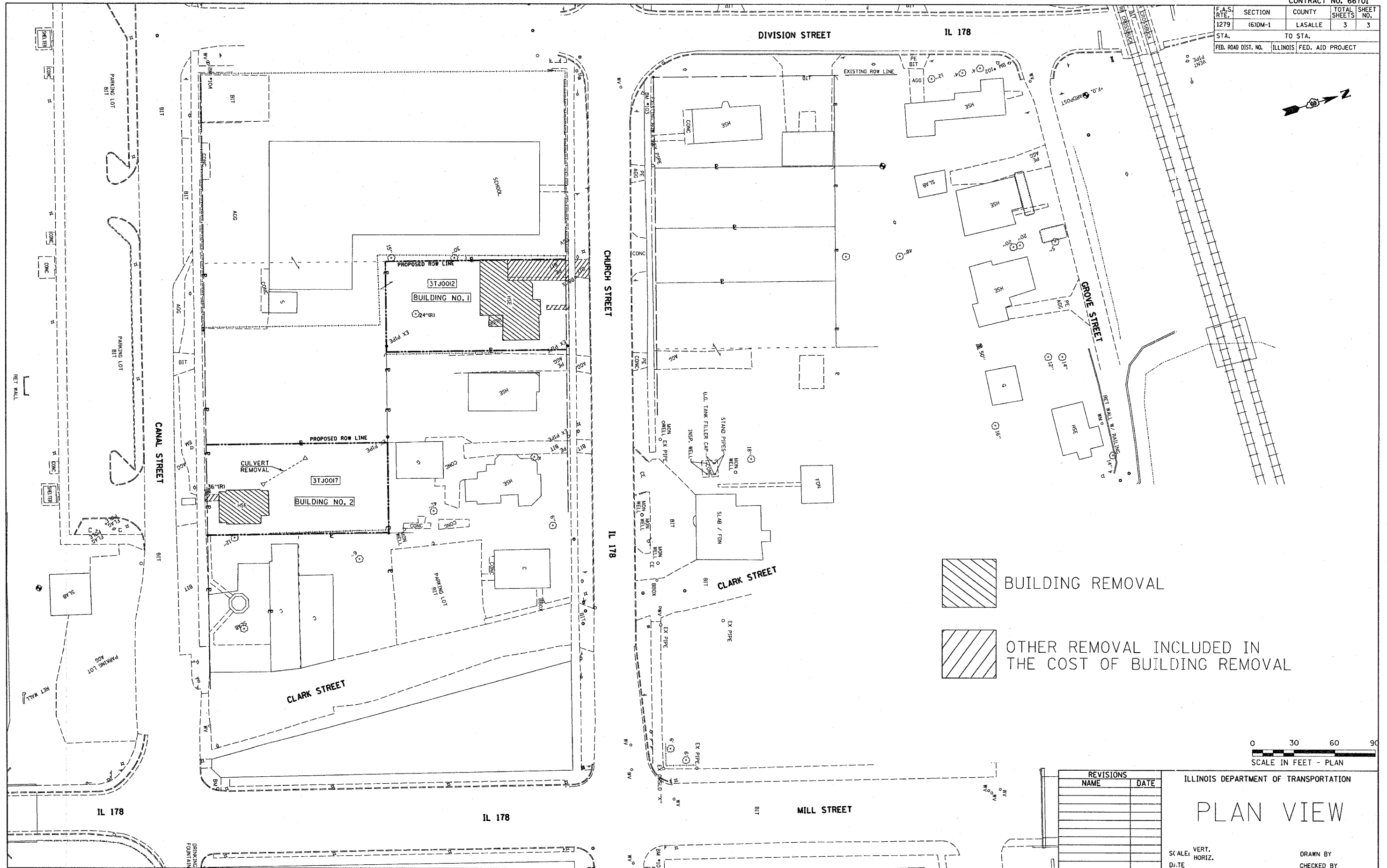
[Signature]  
DISTRICT OPERATIONS ENGINEER


REVISIONS	
NAME	DATE

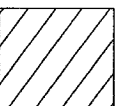
ILLINOIS DEPARTMENT OF TRANSPORTATION

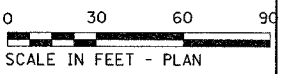
**GENERAL NOTES,  
SCHEDULE &  
SUMMARY OF QUANTITIES**

F.A.S. RTE.	SECTION	COUNTY	TOTAL SHEETS	SHEET NO.
1279	(6)DM-1	LASALLE	3	3
STA.		TO STA.		
FED. ROAD DIST. NO.		ILLINOIS	FED. AID PROJECT	



 BUILDING REMOVAL

 OTHER REMOVAL INCLUDED IN THE COST OF BUILDING REMOVAL



REVISIONS	
NAME	DATE

ILLINOIS DEPARTMENT OF TRANSPORTATION

# PLAN VIEW

SCALE: VERT. HORIZ. D./TE

DRAWN BY \_\_\_\_\_  
CHECKED BY \_\_\_\_\_

PLOT DATE = 2/21/2007  
 FILE NAME = 1279DM1.PLT  
 PLOT SCALE = 1/4" = 1'-0"  
 USER NAME = MUSER0