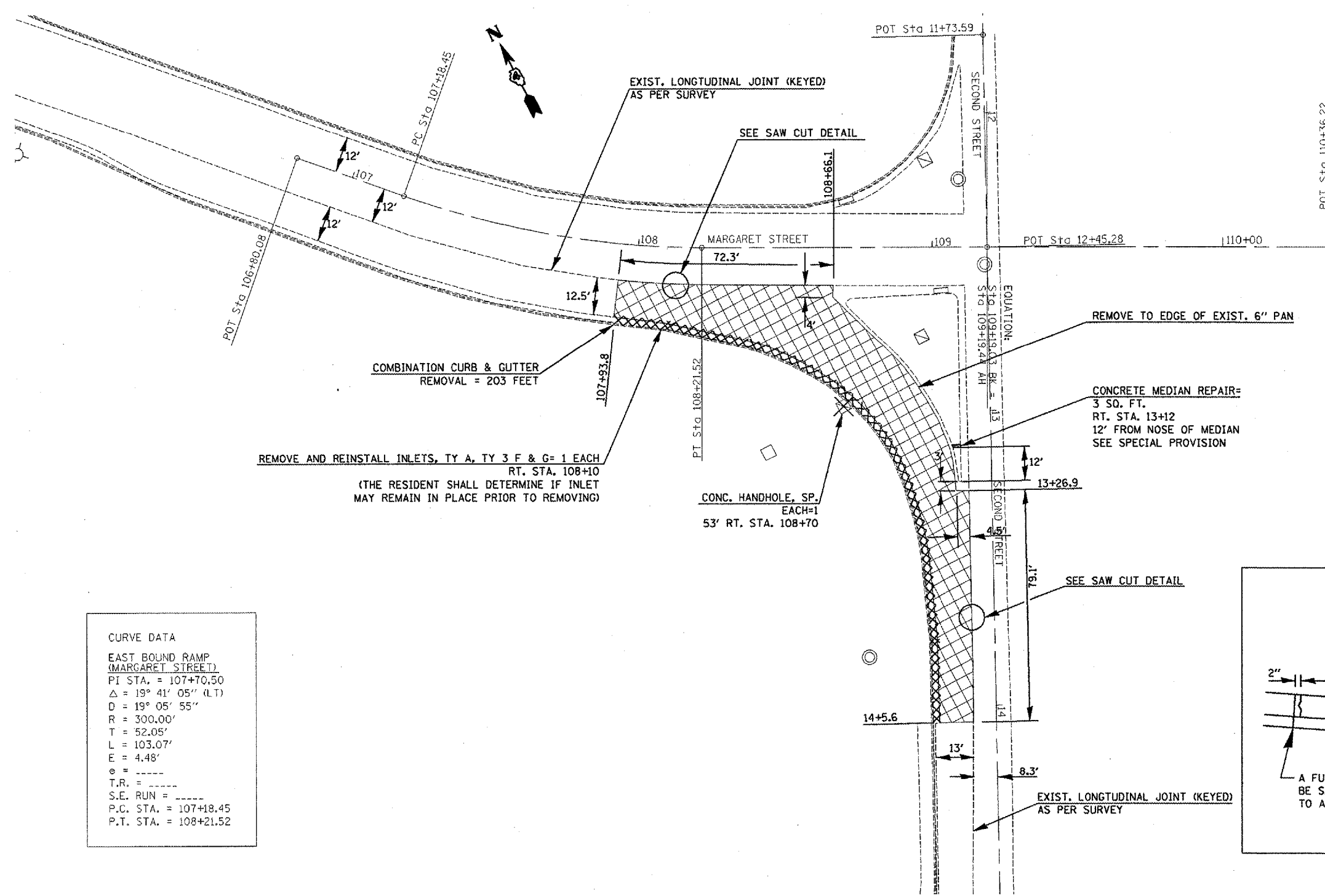
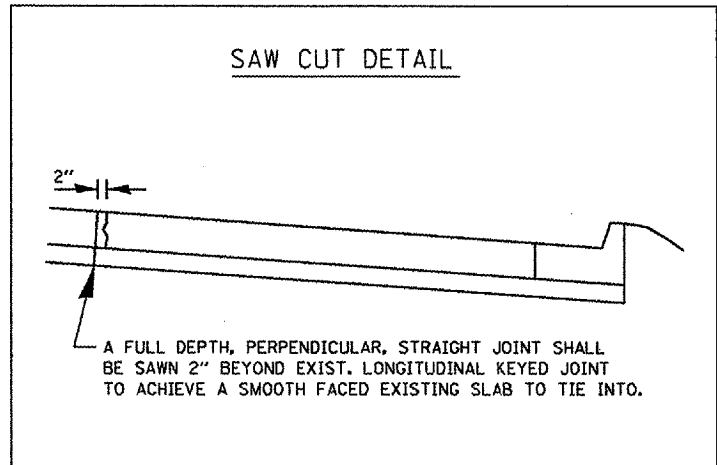


|                       |                        |                  |              |
|-----------------------|------------------------|------------------|--------------|
| CONTRACT NO. 68649    |                        |                  |              |
| F.A.P. RTE.           | SECTION                | COUNTY           | TOTAL SHEETS |
| 693                   | 04 RADIUS IMPROV. 2007 | TAZEWELL         | 10           |
| STA.                  | TO STA.                |                  |              |
| FED. ROAD DIST. NO. 4 | ILLINOIS               | FED. AID PROJECT |              |



EXIST. PCC PAVEMENT 10" TO BE REMOVED. THIS SHALL BE PAID FOR AS PAVEMENT REMOVAL= 402 SQ. YD. INCLUDES COST OF REMOVING EXIST. STABILIZED SUB-BASE 4" AS SPECIFIED IN ARTICLE 440.01 OF THE STANDARD SPECIFICATIONS.

**CURVE DATA**  
 EAST BOUND RAMP  
 (MARGARET STREET)  
 PI STA. = 107+70.50  
 $\Delta = 19^\circ 41' 05''$  (LT)  
 $D = 19^\circ 05' 55''$   
 $R = 300.00'$   
 $T = 52.05'$   
 $L = 103.07'$   
 $E = 4.48'$   
 $\theta = \text{-----}$   
 $T.R. = \text{-----}$   
 $S.E. \text{ RUN} = \text{-----}$   
 P.C. STA. = 107+18.45  
 P.T. STA. = 108+21.52



| REVISIONS |      |
|-----------|------|
| NAME      | DATE |
|           |      |
|           |      |
|           |      |
|           |      |
|           |      |
|           |      |
|           |      |
|           |      |
|           |      |
|           |      |

ILLINOIS DEPARTMENT OF TRANSPORTATION

**REMOVAL ITEMS**

SCALE: VERT. \_\_\_\_\_  
 DATE: \_\_\_\_\_

DRAWN BY \_\_\_\_\_  
 CHECKED BY \_\_\_\_\_

PLOT DATE = 2/15/2007  
 FILE NAME = c:\projects\112\plan\sheet.dgn  
 PLOT SCALE = 480000 / IN.  
 USER NAME = gdamman